

*FIGURE 1*  
*LED LCD TV (M/N: LC-60N7000U)*  
*COVER REMOVED*



*FIGURE 2*  
*LED LCD TV (M/N: LC-60N7000U)*  
*LCD PANEL LABEL*



*FIGURE 3*  
*LED LCD TV (M/N: LC-60N7000U)*  
*MAIN BOARD (COMPONENT SIDE)*



*FIGURE 4*  
*LED LCD TV (M/N: LC-60N7000U)*  
*MAIN BOARD (SOLDERED SIDE)*





*FIGURE 5*  
*LED LCD TV (M/N: LC-60N7000U)*  
*CHIP#1 & CRYSTAL#1 ON MAIN BOARD*



*FIGURE 6*  
*LED LCD TV (M/N: LC-60N7000U)*  
*CHIP#2 & CRYSTAL#2 ON MAIN BOARD*



*FIGURE 7*  
*LED LCD TV (M/N: LC-60N7000U)*  
*TUNER*



*FIGURE 8*  
*LED LCD TV (M/N: LC-60N7000U)*  
*TUNER BOARD (COMPONENT SIDE)*



*FIGURE 9*  
*LED LCD TV (M/N: LC-60N7000U)*  
*TUNER BOARD (SOLDERED SIDE)*



*FIGURE 10*  
*LED LCD TV (M/N: LC-60N7000U)*  
*CHIP & CRYSTAL ON TUNER BOARD*





*FIGURE 11*  
*LED LCD TV (M/N: LC-60N7000U)*  
*RF BOARD (COMPONENT SIDE)*



*FIGURE 12*  
*LED LCD TV (M/N: LC-60N7000U)*  
*RF BOARD (SOLDERED SIDE)*



*FIGURE 13*  
*LED LCD TV (M/N: LC-60N7000U)*  
*RF BOARD LABEL*



FIGURE 14  
LED LCD TV (M/N: LC-60N7000U)  
CHIP & CRYSTAL ON RF BOARD



FIGURE 15  
LED LCD TV (M/N: LC-60N7000U)  
KEY BOARD (COMPONENT SIDE)





*FIGURE 16*  
*LED LCD TV (M/N: LC-60N7000U)*  
*KEY BOARD (SOLDERED SIDE)*



*FIGURE 17*  
*LED LCD TV (M/N: LC-60N7000U)*  
*IR BOARD (COMPONENT SIDE)*



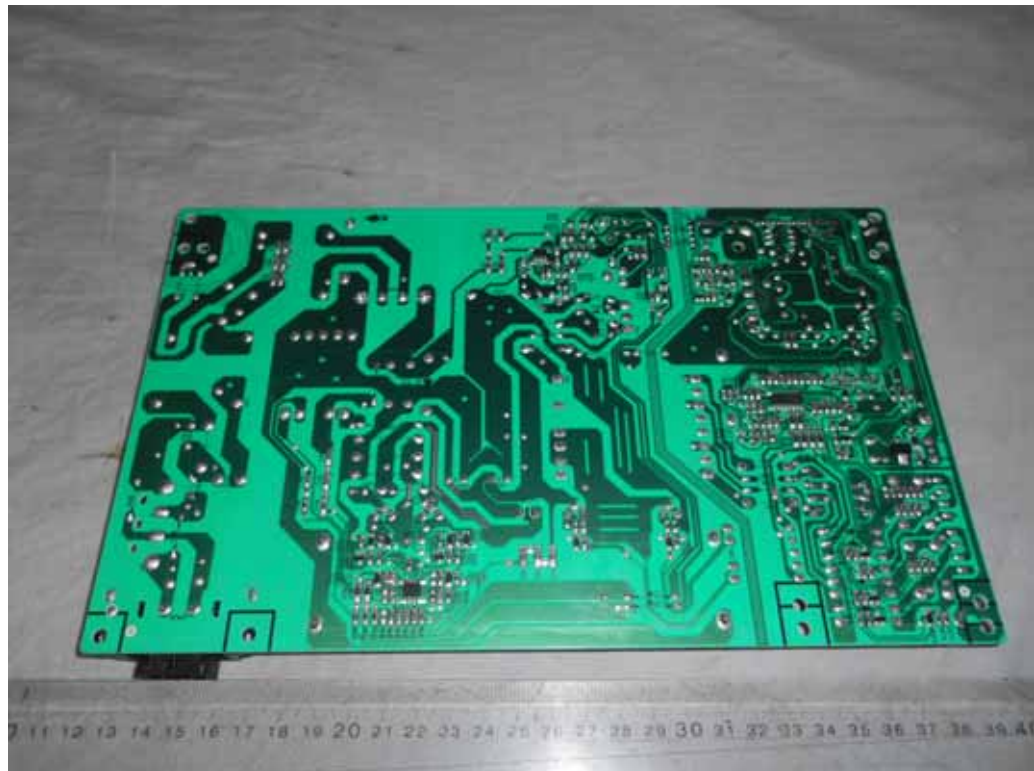
*FIGURE 18*  
*LED LCD TV (M/N: LC-60N7000U)*  
*IR BOARD (SOLDERED SIDE)*



*FIGURE 19*  
*LED LCD TV (M/N: LC-60N7000U)*  
*POWER BOARD (COMPONENT SIDE)*



*FIGURE 20*  
*LED LCD TV (M/N: LC-60N7000U)*  
*POWER BOARD (SOLDERED SIDE)*

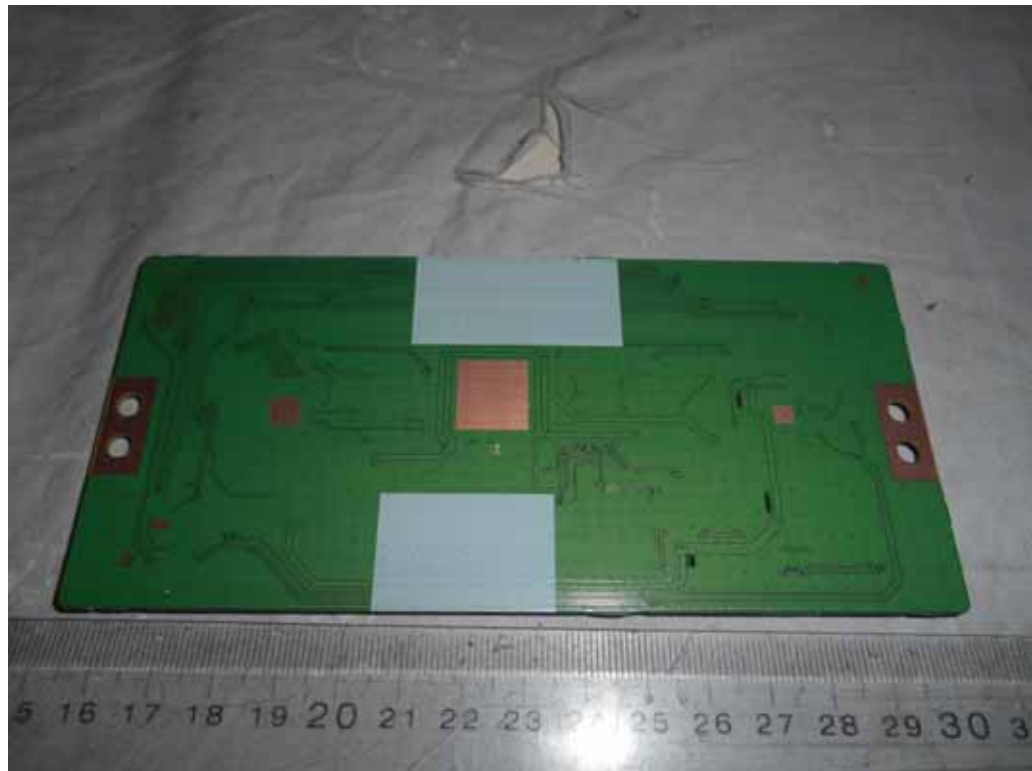


*FIGURE 21*  
*LED LCD TV (M/N: LC-60N7000U)*  
*PANEL BOARD (COMPONENT SIDE)*





*FIGURE 22*  
*LED LCD TV (M/N: LC-60N7000U)*  
*PANEL BOARD (SOLDERED SIDE)*



*FIGURE 23*  
*LED LCD TV (M/N: LC-60N7000U)*  
*CHIP & CRYSTAL ON PANEL BOARD*

