

*FIGURE 1*  
*LED LCD TV (M/N: LC-50N7000U)*  
*COVER REMOVED*



*FIGURE 2*  
*LED LCD TV (M/N: LC-50N7000U)*  
*LCD PANEL LABEL*



*FIGURE 3*  
*LED LCD TV (M/N: LC-50N7000U)*  
*MAIN BOARD (COMPONENT SIDE)*



*FIGURE 4*  
*LED LCD TV (M/N: LC-50N7000U)*  
*MAIN BOARD (SOLDERED SIDE)*



*FIGURE 5*  
*LED LCD TV (M/N: LC-50N7000U)*  
*CHIP & CRYSTAL ON MAIN BOARD*



*FIGURE 6*  
*LED LCD TV (M/N: LC-50N7000U)*  
*TUNER*

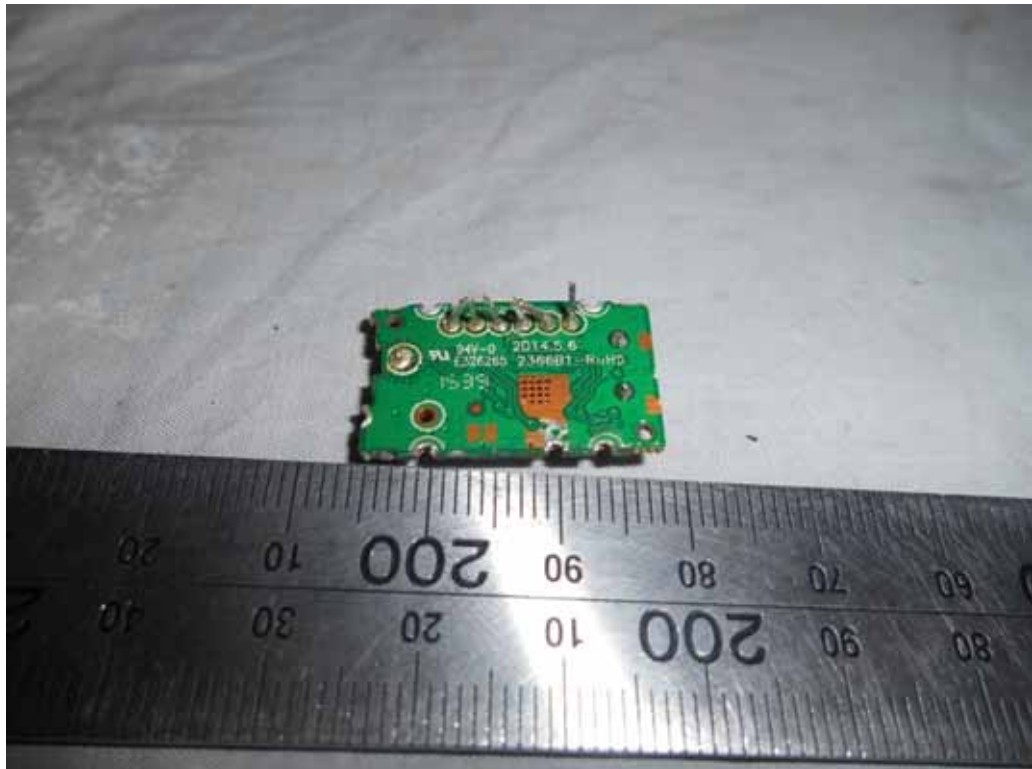




*FIGURE 7*  
*LED LCD TV (M/N: LC-50N7000U)*  
*TUNER BOARD (COMPONENT SIDE)*



*FIGURE 8*  
*LED LCD TV (M/N: LC-50N7000U)*  
*TUNER BOARD (SOLDERED SIDE)*



*FIGURE 9*  
*LED LCD TV (M/N: LC-50N7000U)*  
*TUNER & CRYSTAL ON MAIN BOARD*



*FIGURE 10*  
*LED LCD TV (M/N: LC-50N7000U)*  
*RF BOARD (COMPONENT SIDE)*



*FIGURE 11*  
*LED LCD TV (M/N: LC-50N7000U)*  
*RF BOARD (SOLDERED SIDE)*



*FIGURE 12*  
*LED LCD TV (M/N: LC-50N7000U)*  
*RF BOARD LABEL*



FIGURE 13  
LED LCD TV (M/N: LC-50N7000U)  
CHIP & CRYSTAL ON RF BOARD

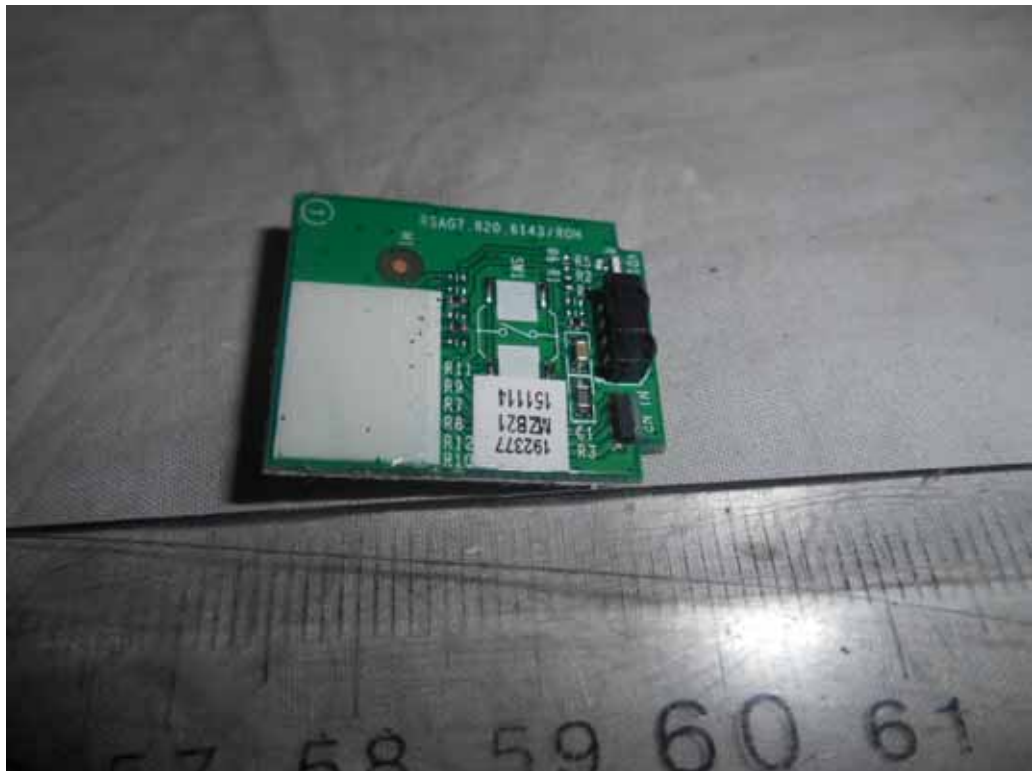


FIGURE 14  
LED LCD TV (M/N: LC-50N7000U)  
KEY BOARD (COMPONENT SIDE)





*FIGURE 15*  
*LED LCD TV (M/N: LC-50N7000U)*  
*KEY BOARD (SOLDERED SIDE)*



*FIGURE 16*  
*LED LCD TV (M/N: LC-50N7000U)*  
*IR BOARD (COMPONENT SIDE)*





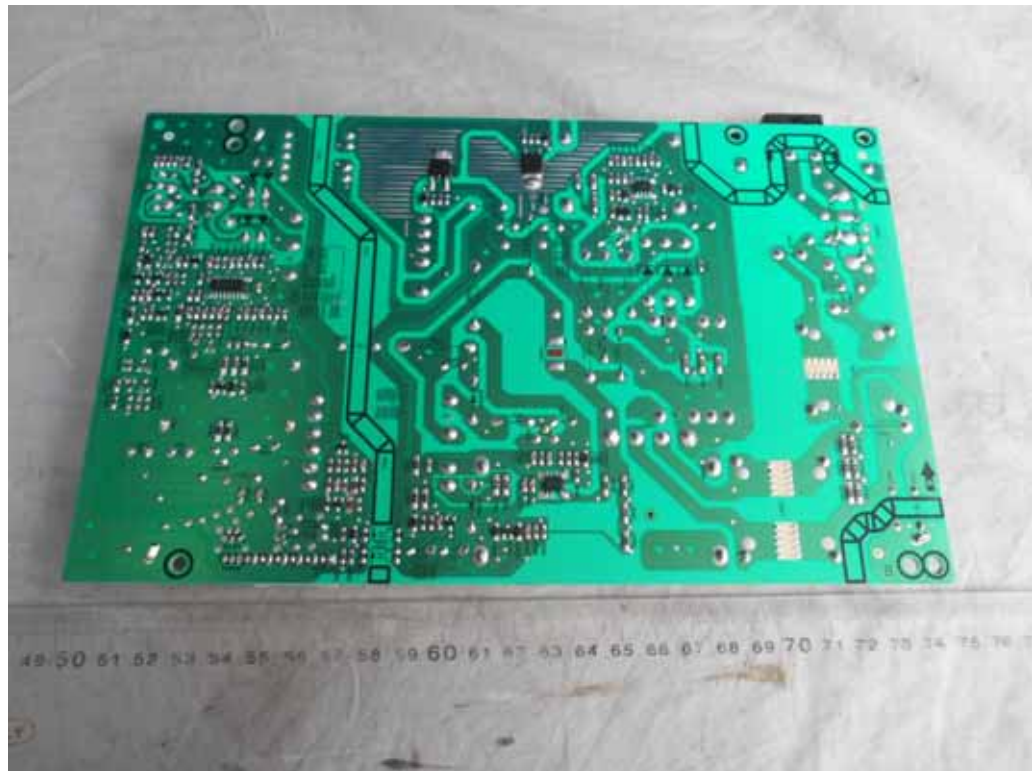
*FIGURE 17*  
*LED LCD TV (M/N: LC-50N7000U)*  
*IR BOARD (SOLDERED SIDE)*



*FIGURE 18*  
*LED LCD TV (M/N: LC-50N7000U)*  
*POWER BOARD (COMPONENT SIDE)*



*FIGURE 19*  
*LED LCD TV (M/N: LC-50N7000U)*  
*POWER BOARD (SOLDERED SIDE)*



*FIGURE 20*  
*LED LCD TV (M/N: LC-50N7000U)*  
*PANEL BOARD (COMPONENT SIDE)*



FIGURE 21  
LED LCD TV (M/N: LC-50N7000U)  
PANEL BOARD (SOLDERED SIDE)



FIGURE 22  
LED LCD TV (M/N: LC-50N7000U)  
CHIP & CRYSTAL ON PANEL BOARD

