

FIGURE 1
LED LCD TV (M/N: 50H7GB)
COVER REMOVED



FIGURE 2
LED LCD TV (M/N: 50H7GB)
LCD PANEL LABEL



FIGURE 3
LED LCD TV (M/N: 50H7GB)
SPEAKER

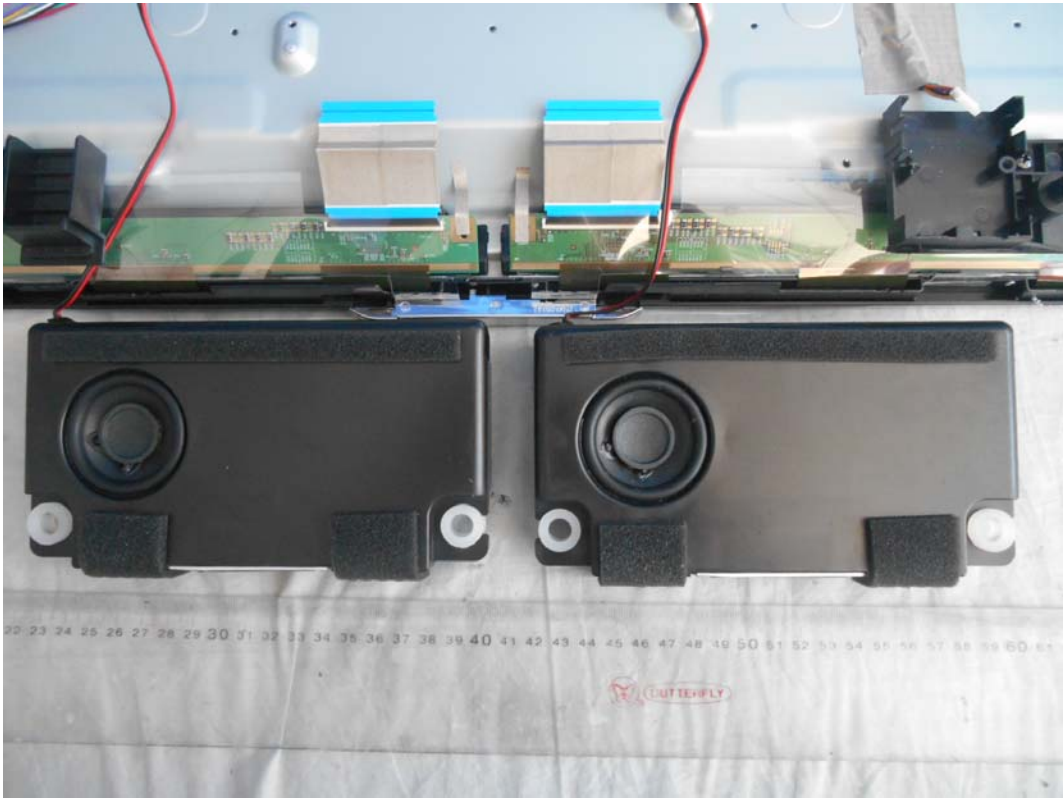


FIGURE 4
LED LCD TV (M/N: 50H7GB)
MAIN BOARD (COMPONENT SIDE)

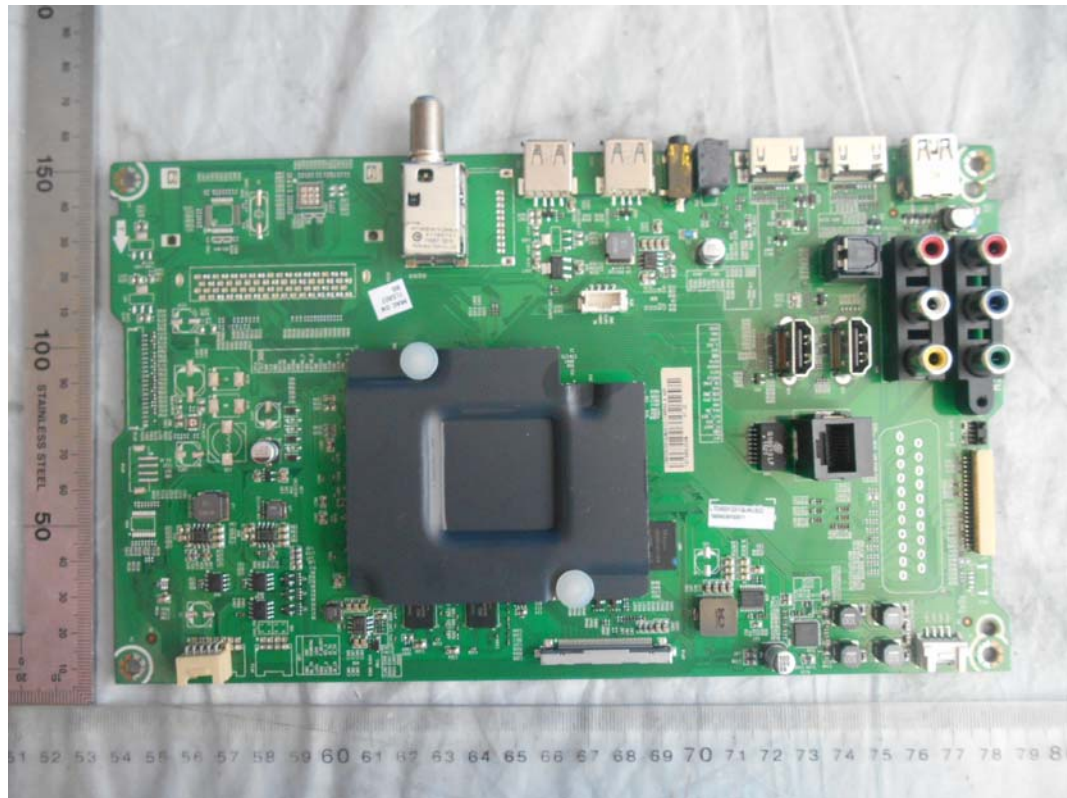


FIGURE 5
LED LCD TV (M/N: 50H7GB)
MAIN BOARD (SOLDERED SIDE)

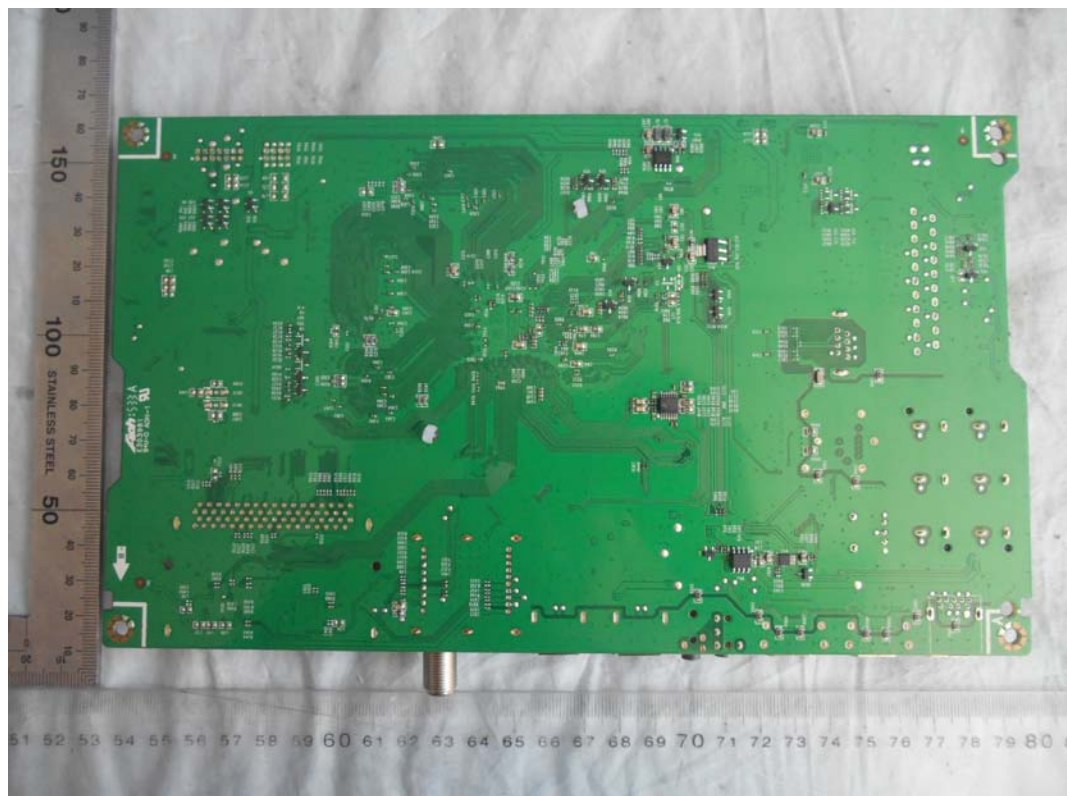




FIGURE 7
LED LCD TV (M/N: 50H7GB)
POWER BOARD (COMPONENT SIDE)

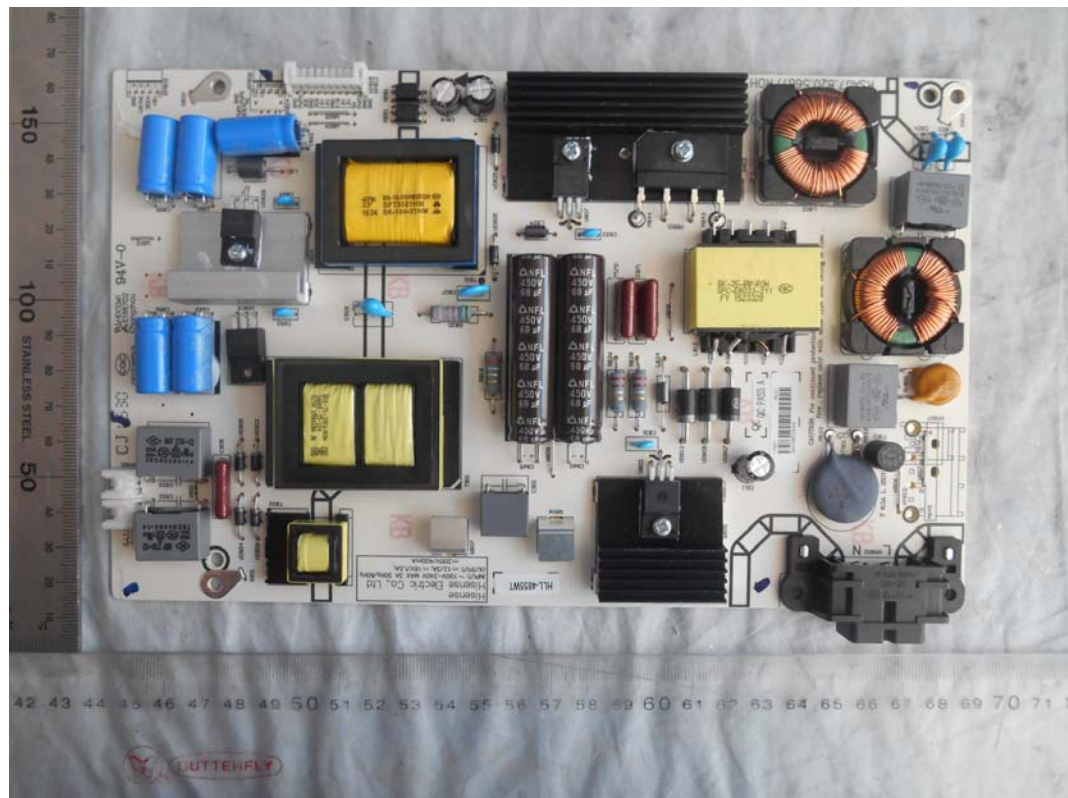


FIGURE 8
LED LCD TV (M/N: 50H7GB)
POWER BOARD (SOLDERED SIDE)

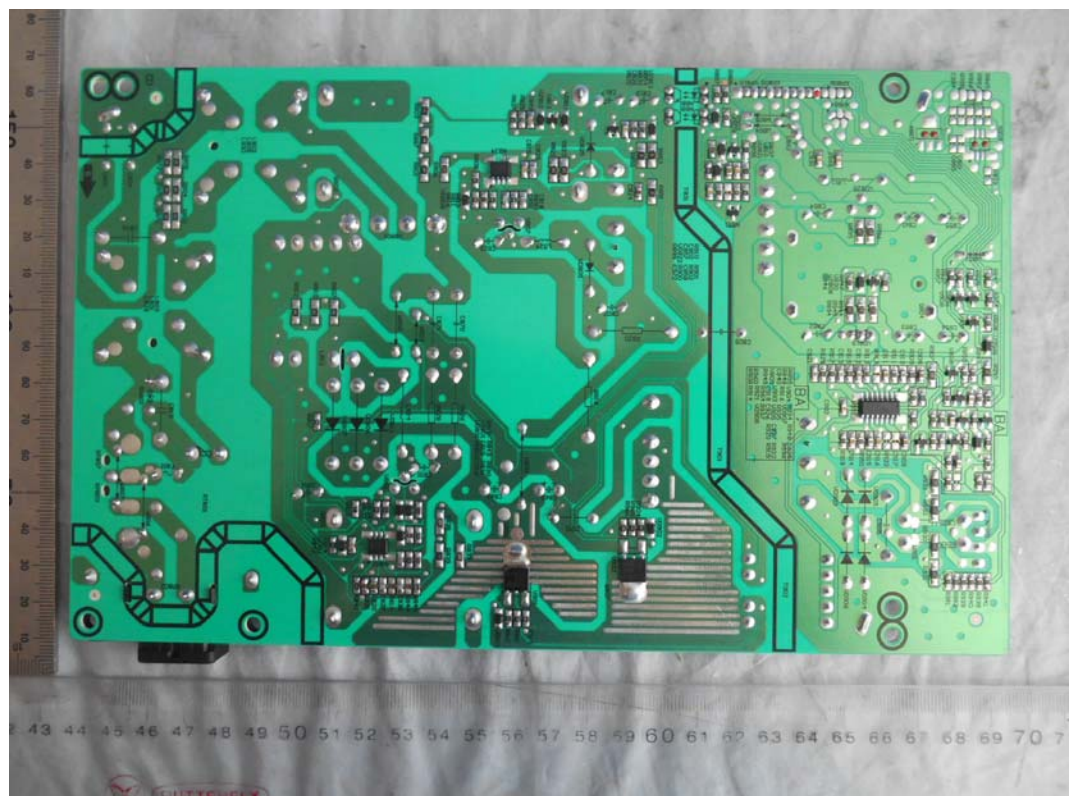


FIGURE 9
LED LCD TV (M/N: 50H7GB)
TUNER

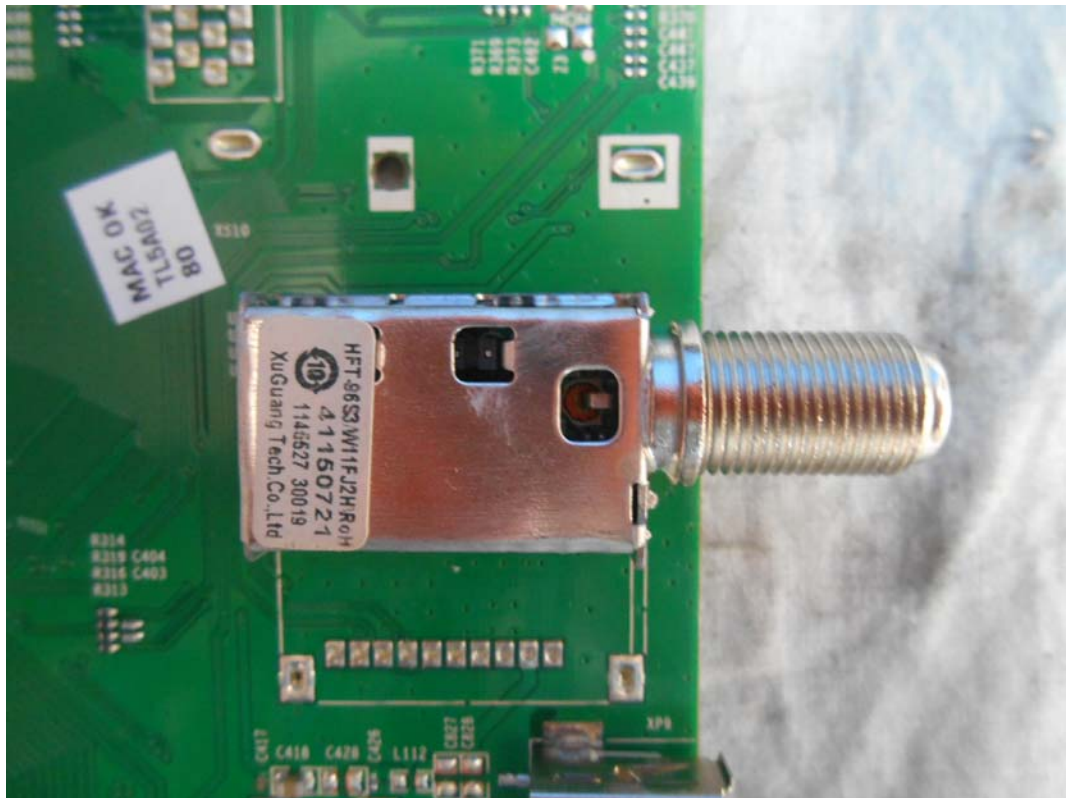


FIGURE 10
LED LCD TV (M/N: 50H7GB)
TUNER ON MAIN BOARD



FIGURE 11
LED LCD TV (M/N: 50H7GB)
SIGNAL BOARD (COMPONENT SIDE)

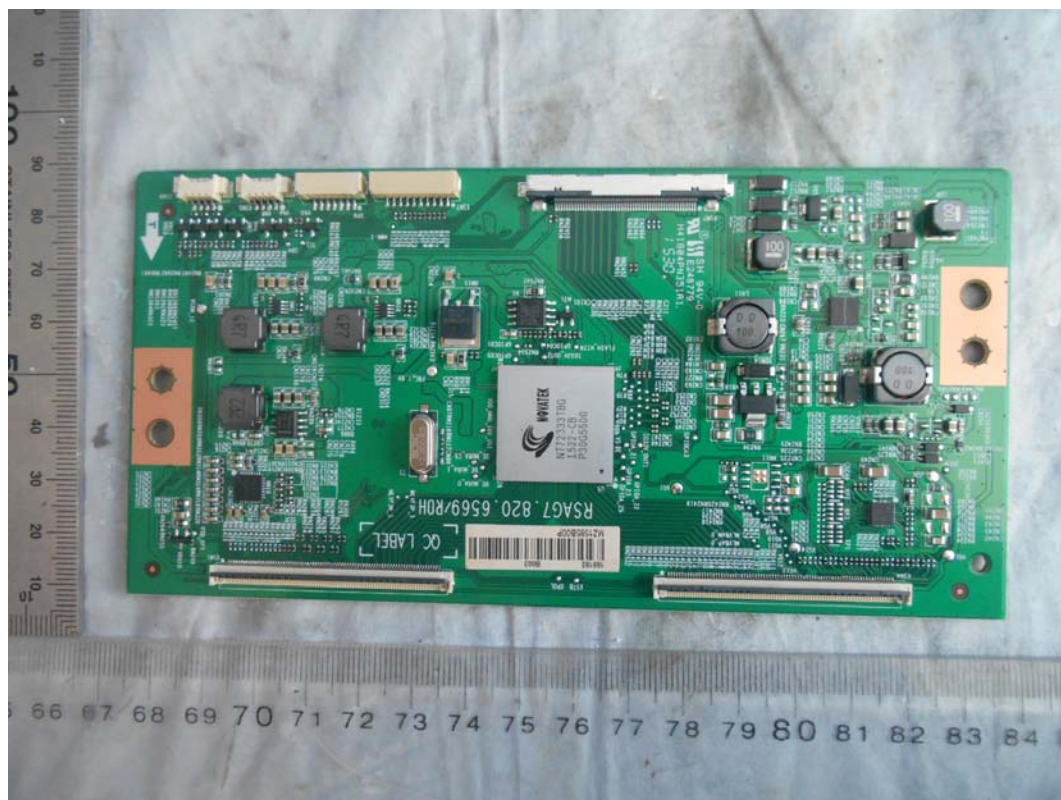


FIGURE 12
LED LCD TV (M/N: 50H7GB)
SIGNAL BOARD (SOLDERED SIDE)

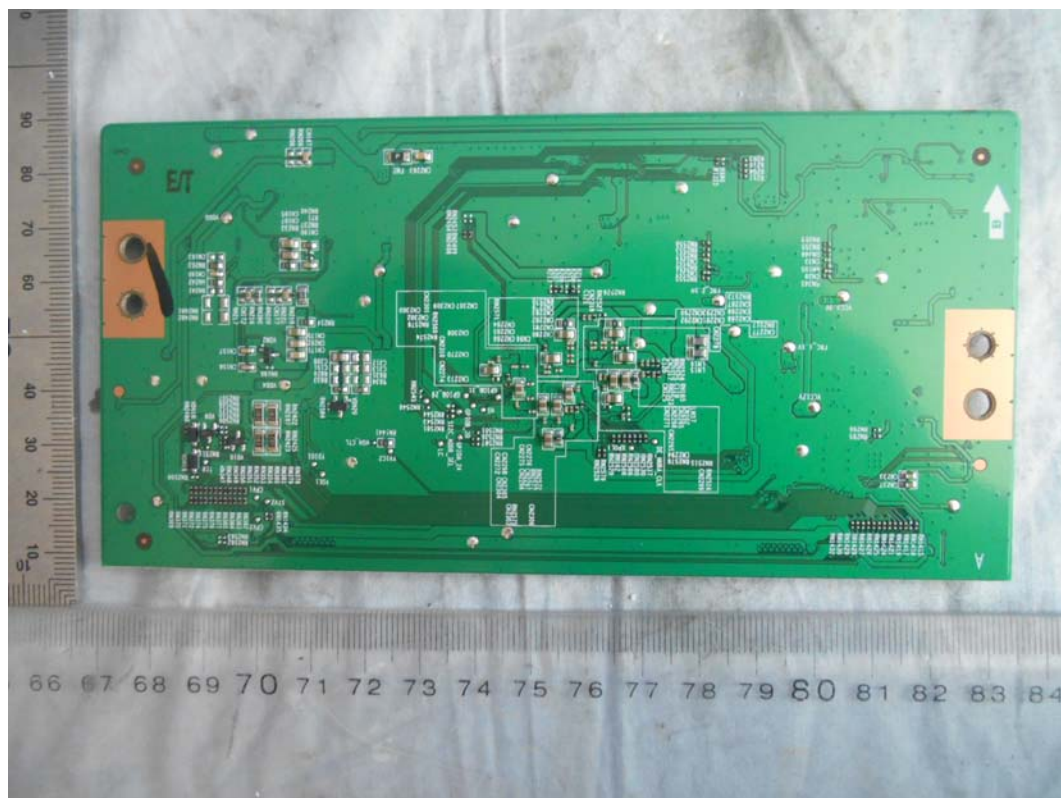


FIGURE 13
LED LCD TV (M/N: 50H7GB)
CHIP AND CRYSTAL ON SIGNAL BOARD



FIGURE 14
LED LCD TV (M/N: 50H7GB)
RF BOARD (COMPONENT SIDE)



FIGURE 15
LED LCD TV (M/N: 50H7GB)
RF BOARD (SOLDERED SIDE)



FIGURE 16
LED LCD TV (M/N: 50H7GB)
RF BOARD LABEL



FIGURE 17
LED LCD TV (M/N: 50H7GB)
CHIP AND CRYSTAL ON RF BOARD

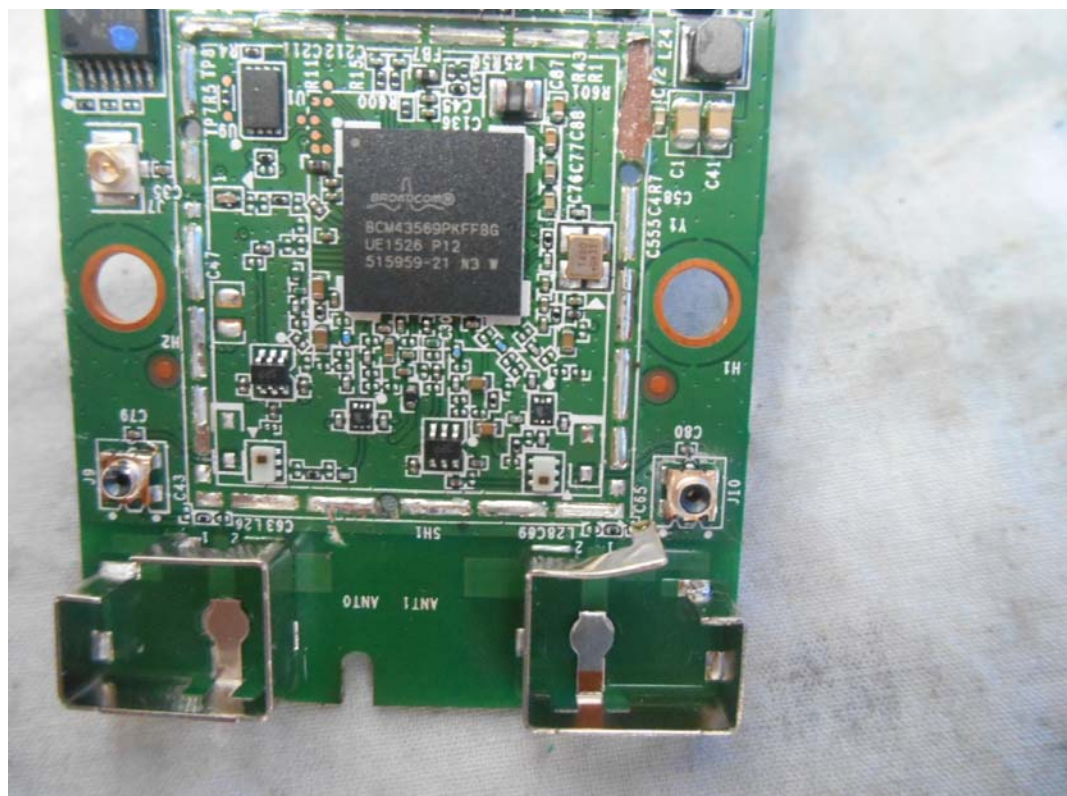


FIGURE 18
LED LCD TV (M/N: 50H7GB)
KEY BOARD (COMPONENT SIDE)

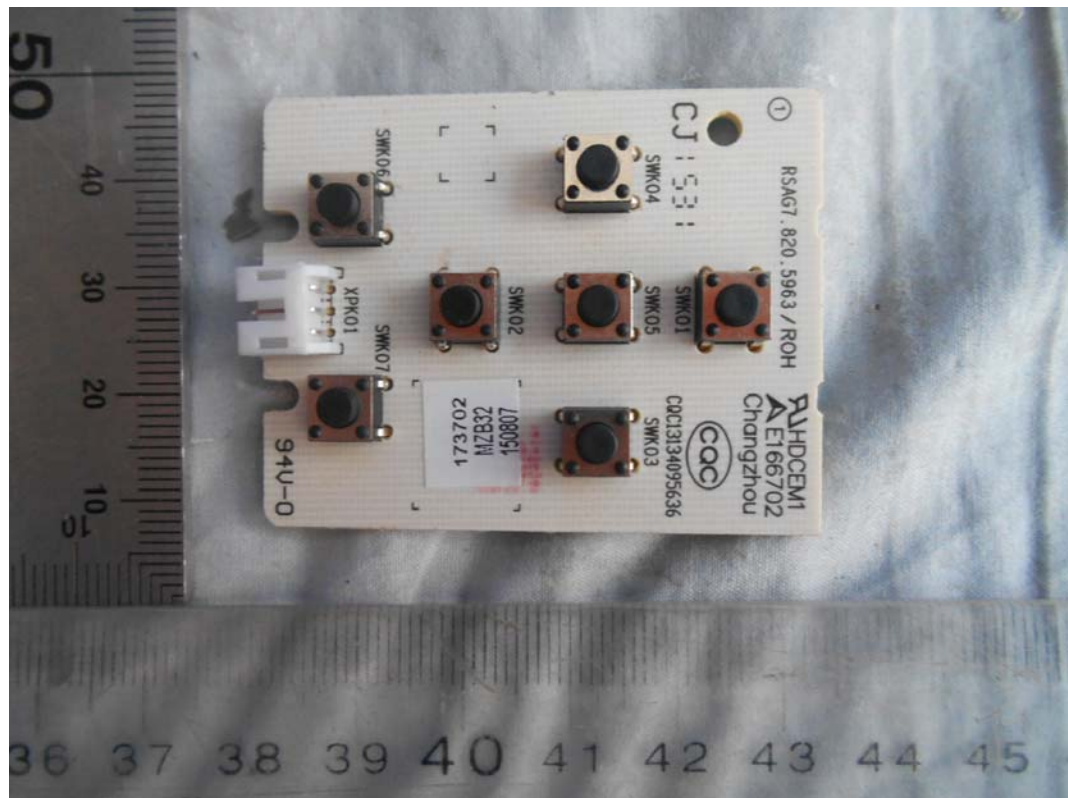


FIGURE 19
LED LCD TV (M/N: 50H7GB)
KEY BOARD (SOLDERED SIDE)

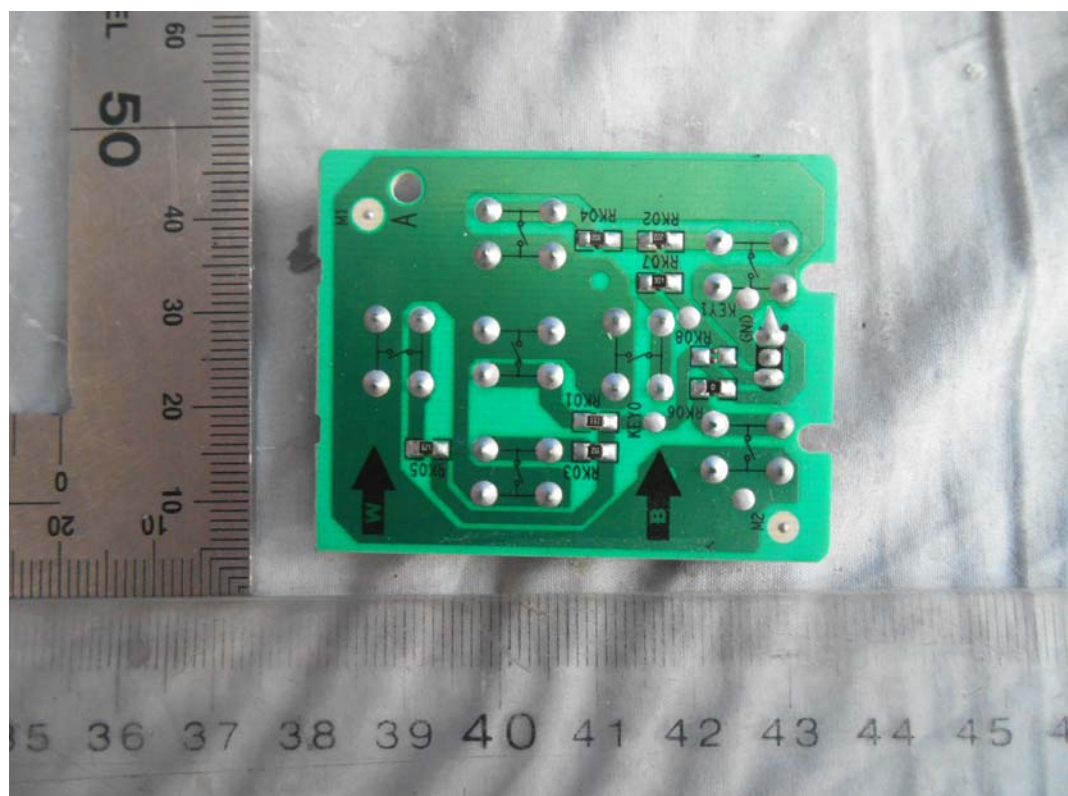


FIGURE 20
LED LCD TV (M/N: 50H7GB)
IR BOARD (COMPONENT SIDE)

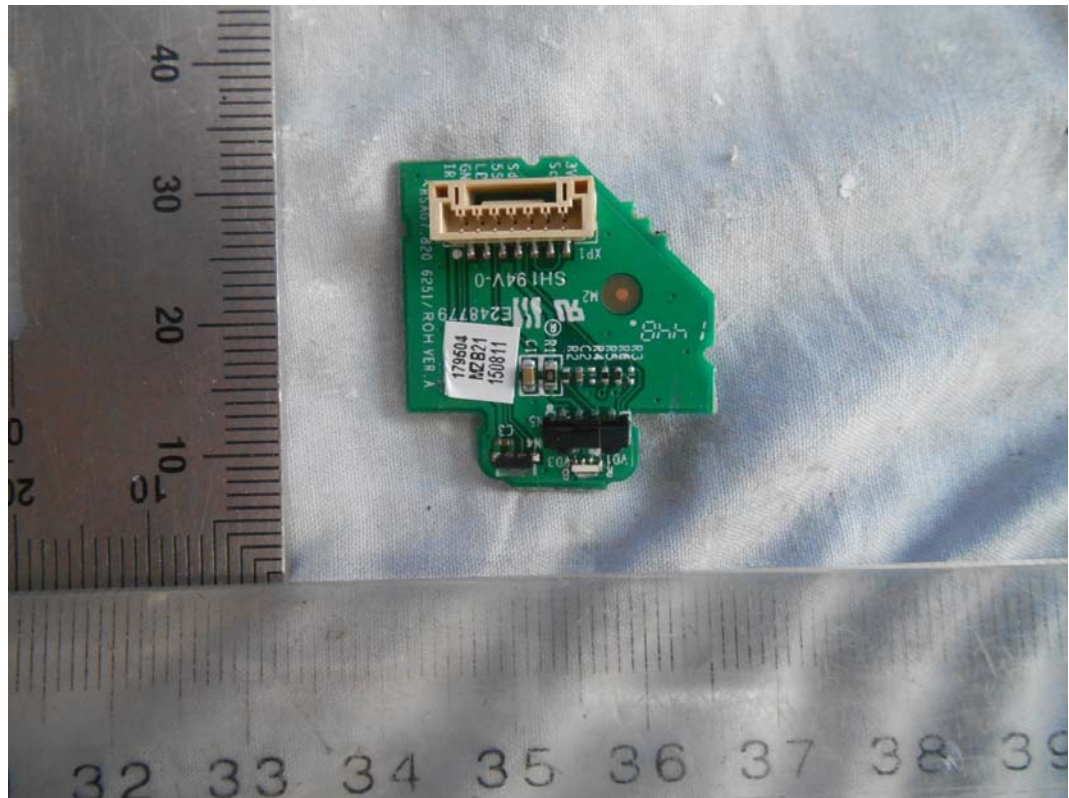


FIGURE 21
LED LCD TV (M/N: 50H7GB)
IR BOARD (SOLDERED SIDE)



FIGURE 22
LED LCD TV (M/N: 50H7GB)
CONTROL BOARD#1 (COMPONENT SIDE)

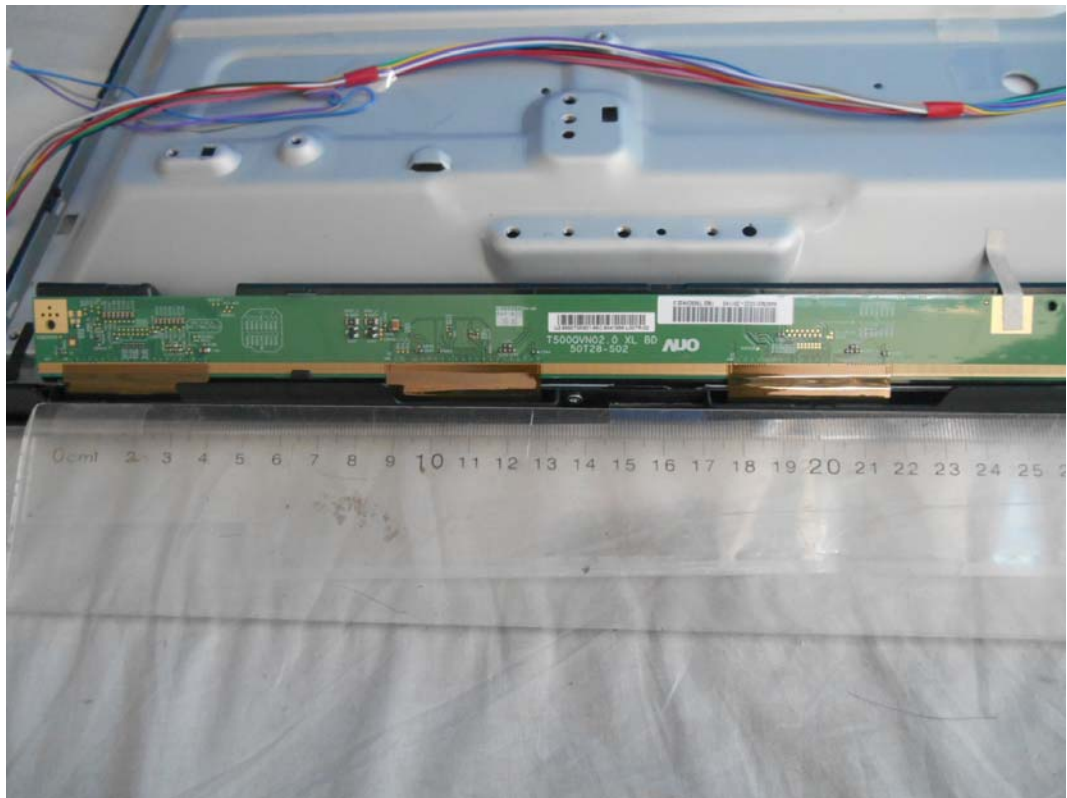


FIGURE 23
LED LCD TV (M/N: 50H7GB)
CONTROL BOARD#1 (SOLDERED SIDE)

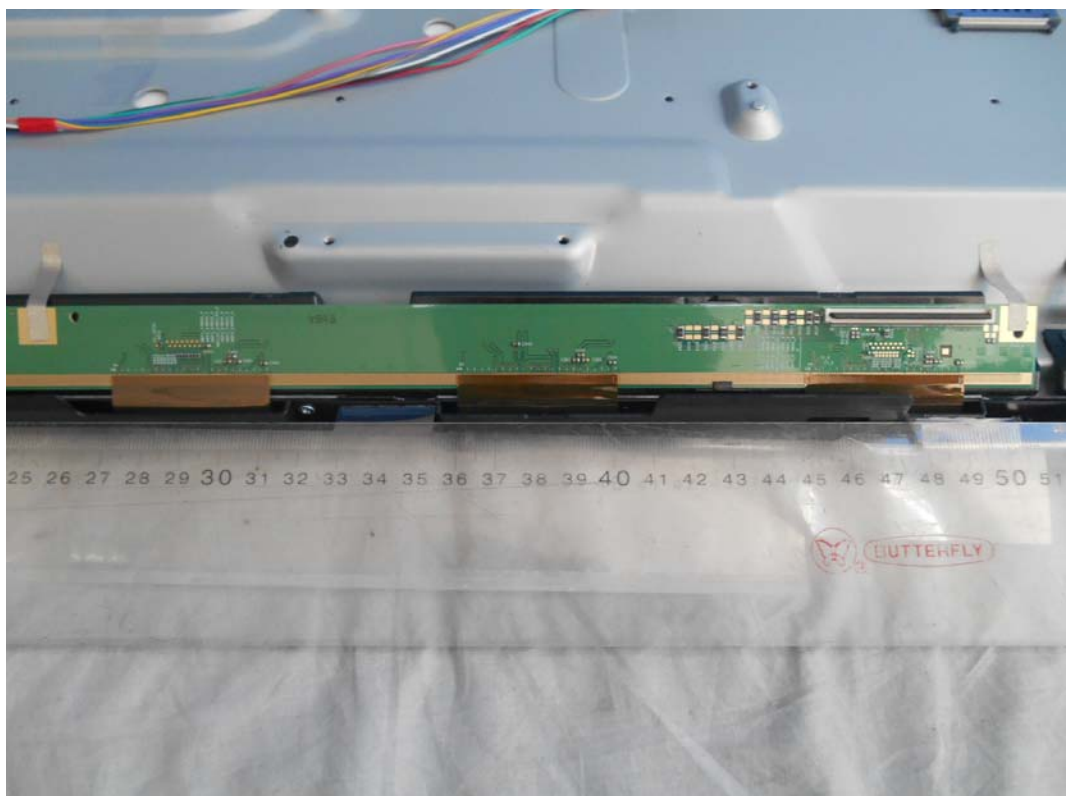


FIGURE 24
LED LCD TV (M/N: 50H7GB)
CONTROL BOARD#2 (COMPONENT SIDE)



FIGURE 25
LED LCD TV (M/N: 50H7GB)
CONTROL BOARD#2 (SOLDERED SIDE)



FIGURE 26
LED LCD TV (M/N: 50H7GB)
DEBUG #1

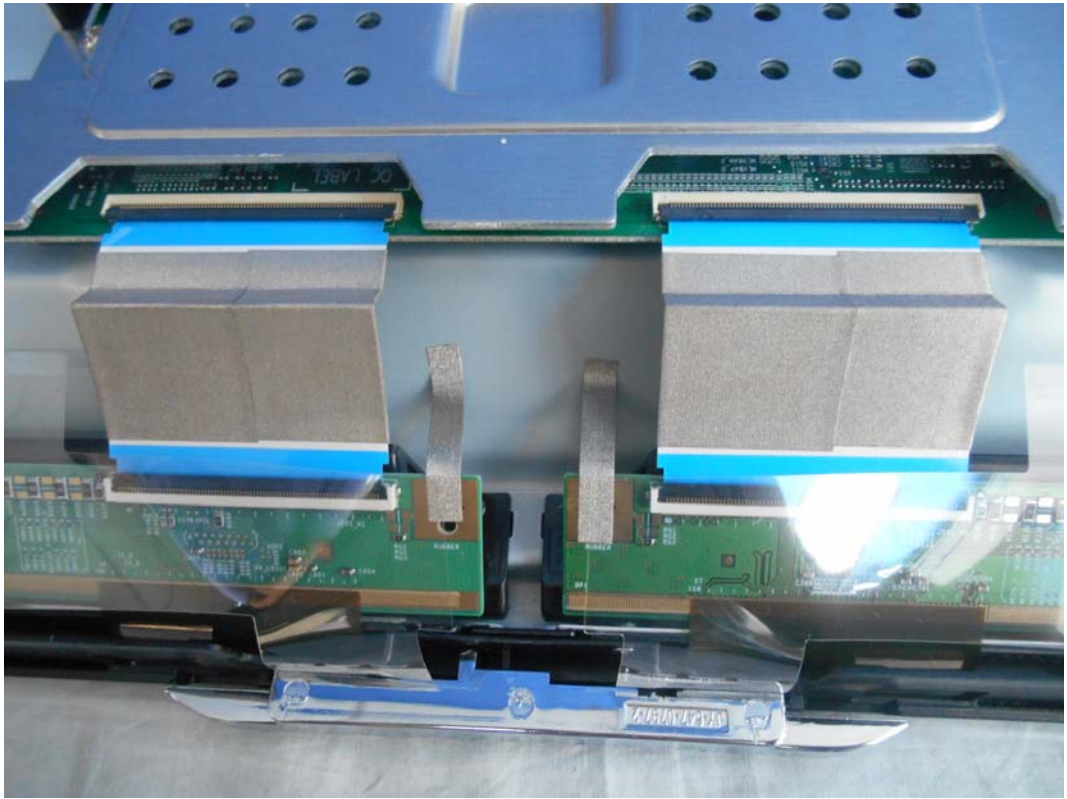


FIGURE 27
LED LCD TV (M/N: 50H7GB)
DEBUG #2

