

FIGURE 1
LED LCD TV (M/N: LTDN50K3201GUWUS)
COVER REMOVED



FIGURE 2
LED LCD TV (M/N: LTDN50K3201GUWUS)
LCD PANEL LABEL

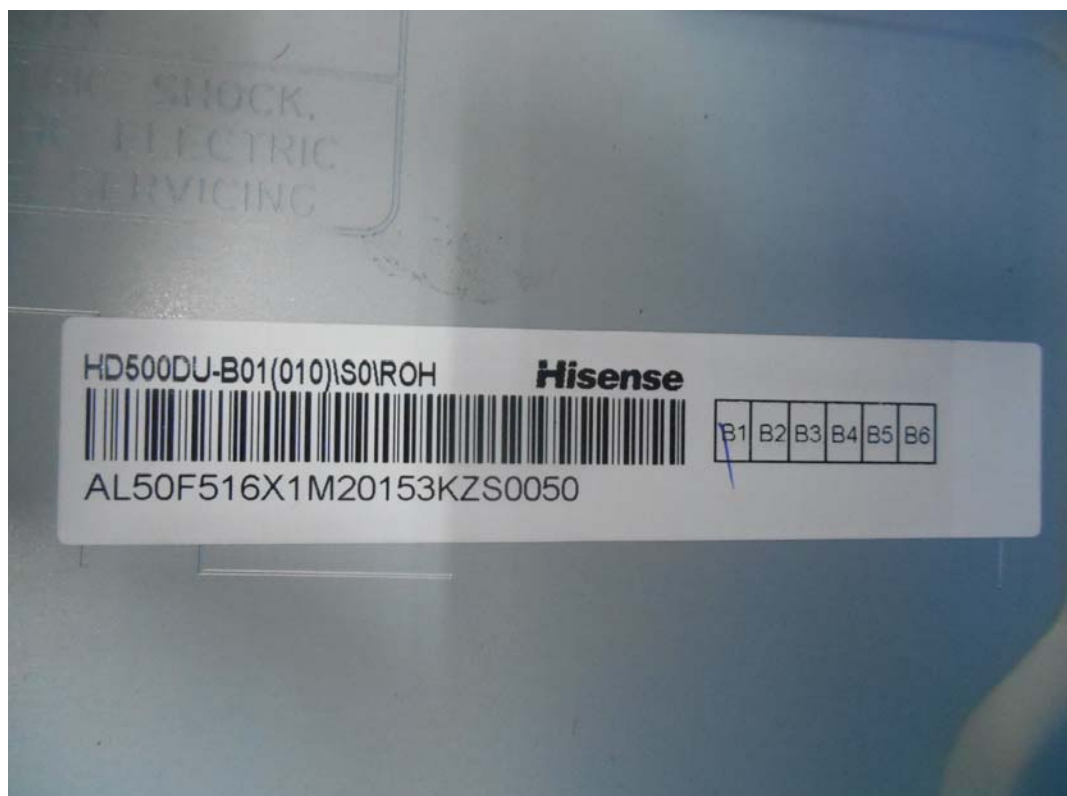


FIGURE 3
LED LCD TV (M/N: LTDN50K3201GUWUS)
POWER BOARD (COMPONENT SIDE)

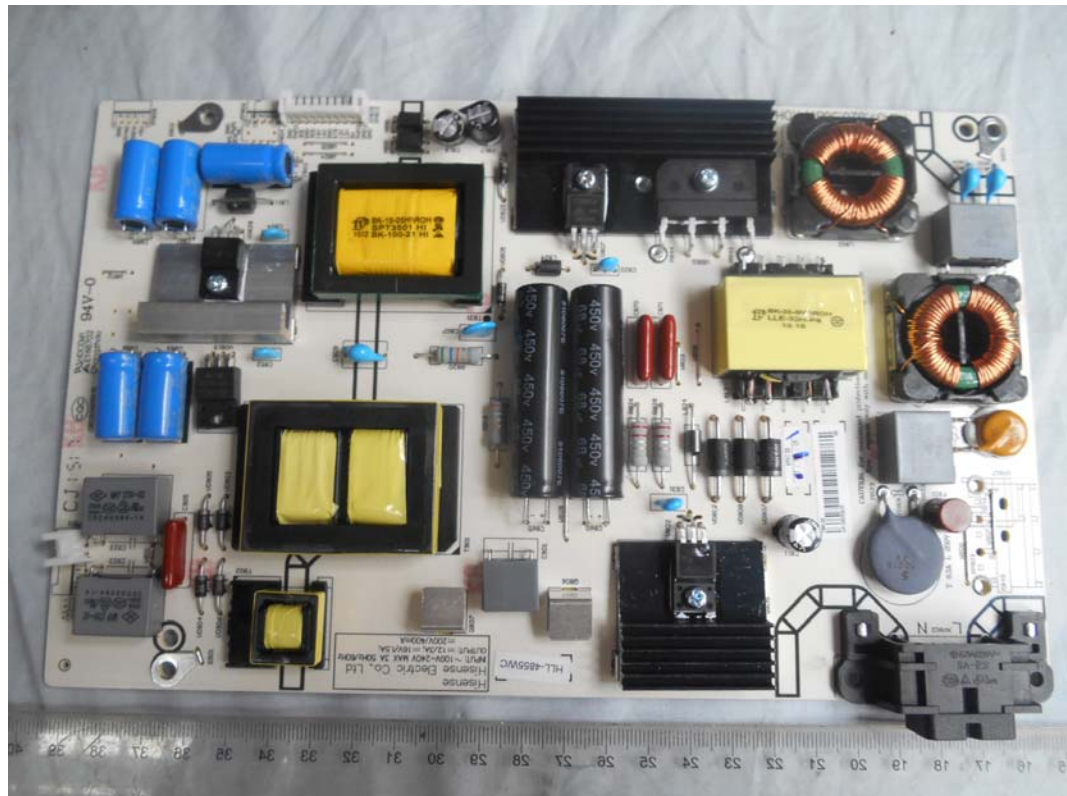


FIGURE 4
LED LCD TV (M/N: LTDN50K3201GUWUS)
POWER BOARD (SOLDERED SIDE)

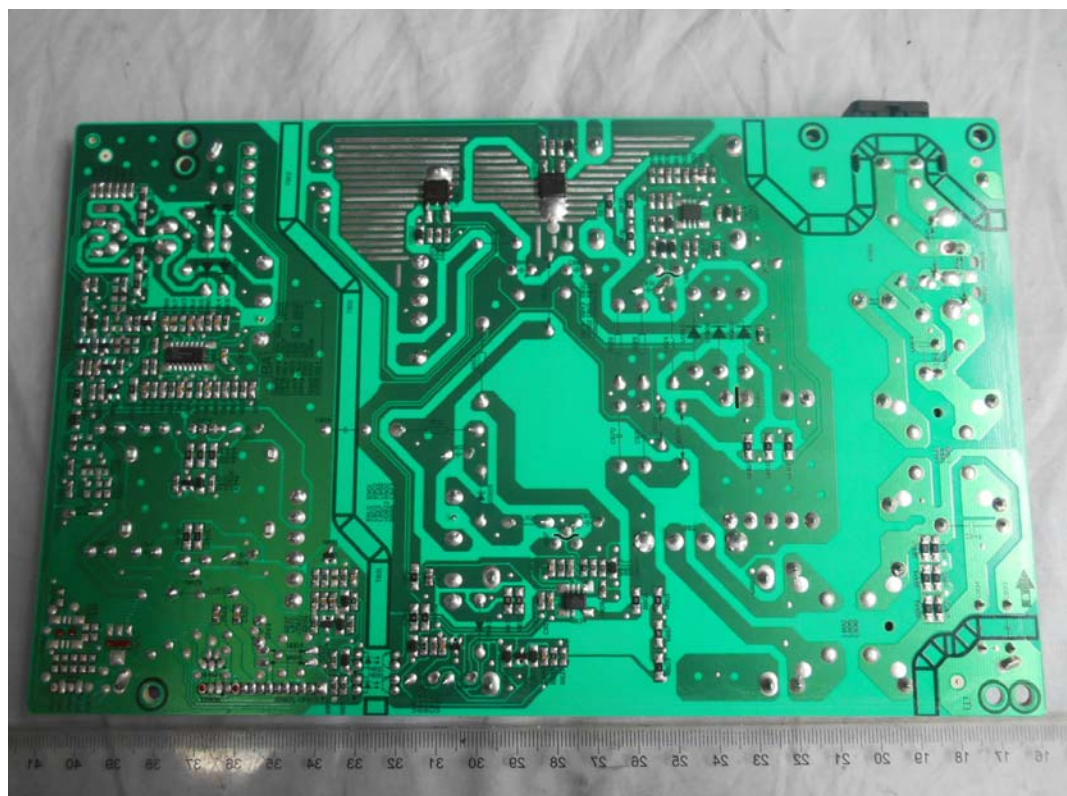


FIGURE 5
LED LCD TV (M/N: LTDN50K3201GUWUS)
CHIP AND CRYSTAL ON MAIN BOARD



FIGURE 6
LED LCD TV (M/N: LTDN50K3201GUWUS)
TUNER ON MAIN BOARD

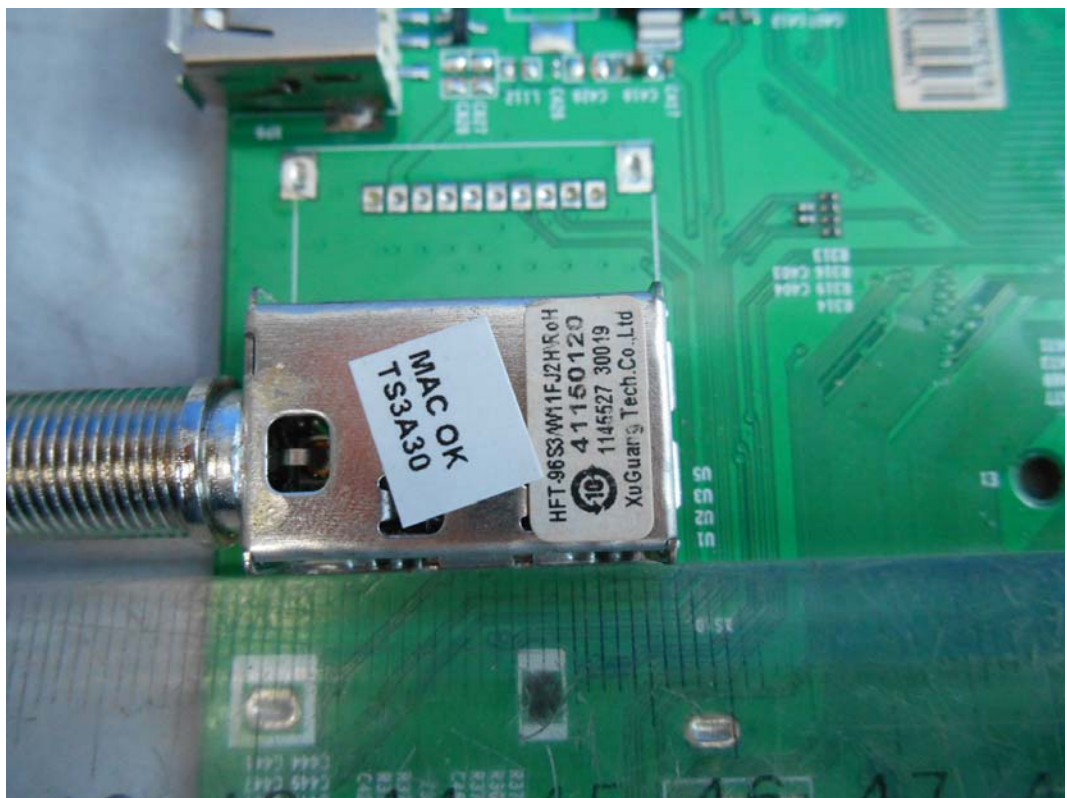


FIGURE 7
LED LCD TV (M/N: LTDN50K3201GUWUS)
TUNER BOARD (COMPONENT SIDE)

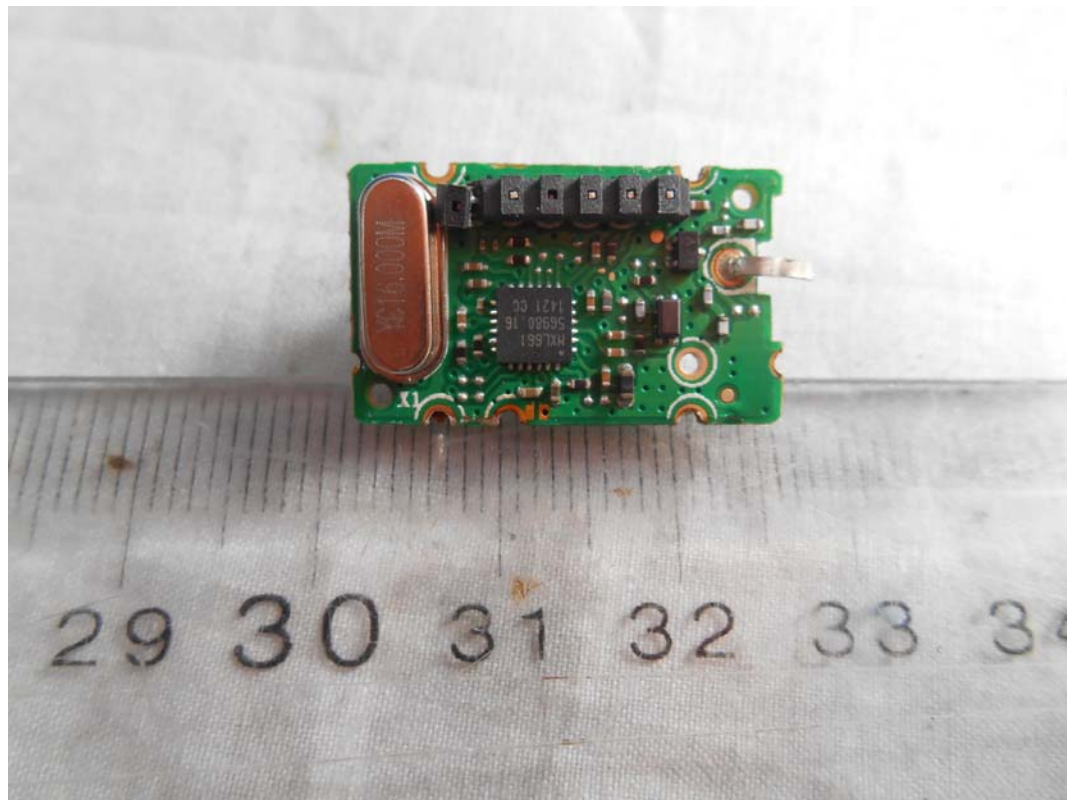


FIGURE 8
LED LCD TV (M/N: LTDN50K3201GUWUS)
TUNER BOARD (SOLDERED SIDE)

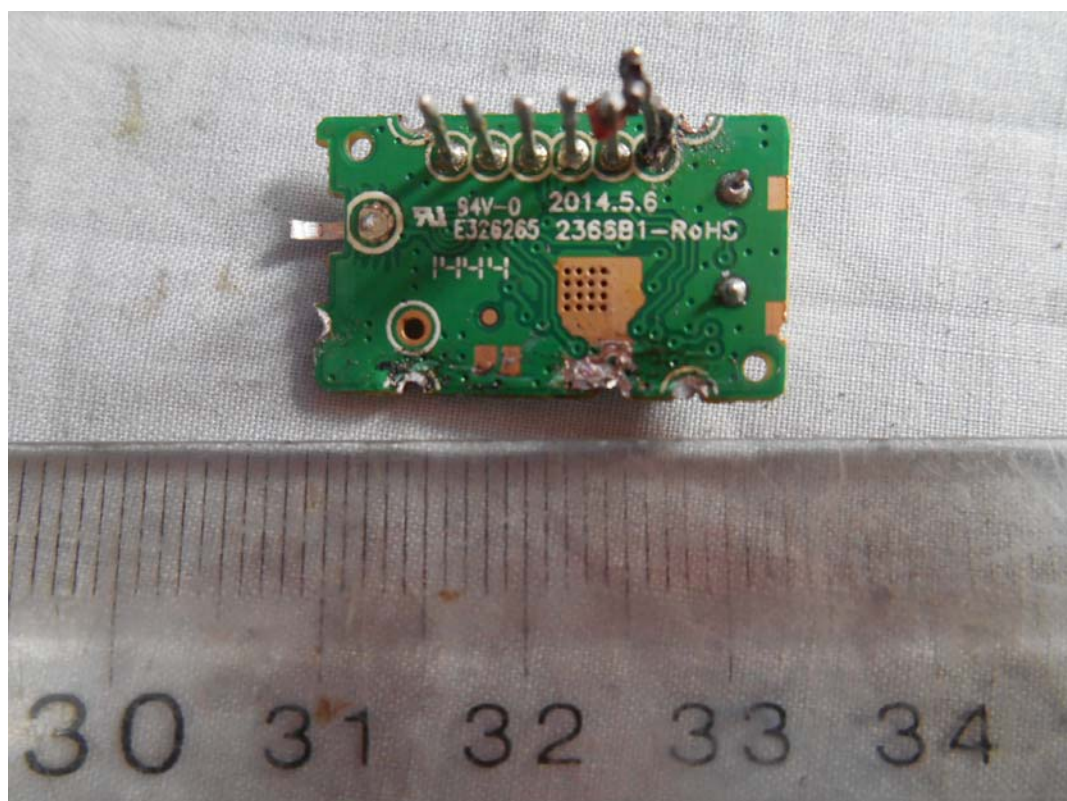


FIGURE 9
LED LCD TV (M/N: LTDN50K3201GUWUS)
KEY BOARD (COMPONENT SIDE)

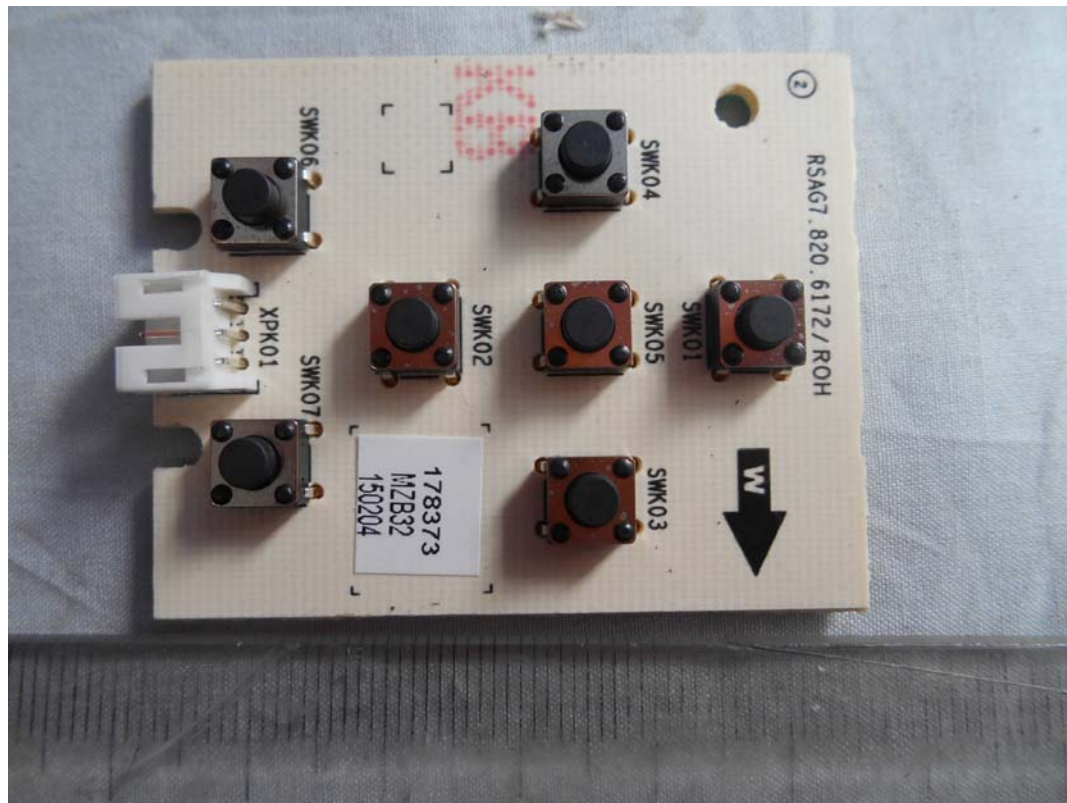


FIGURE 10
LED LCD TV (M/N: LTDN50K3201GUWUS)
KEY BOARD (SOLDERED SIDE)

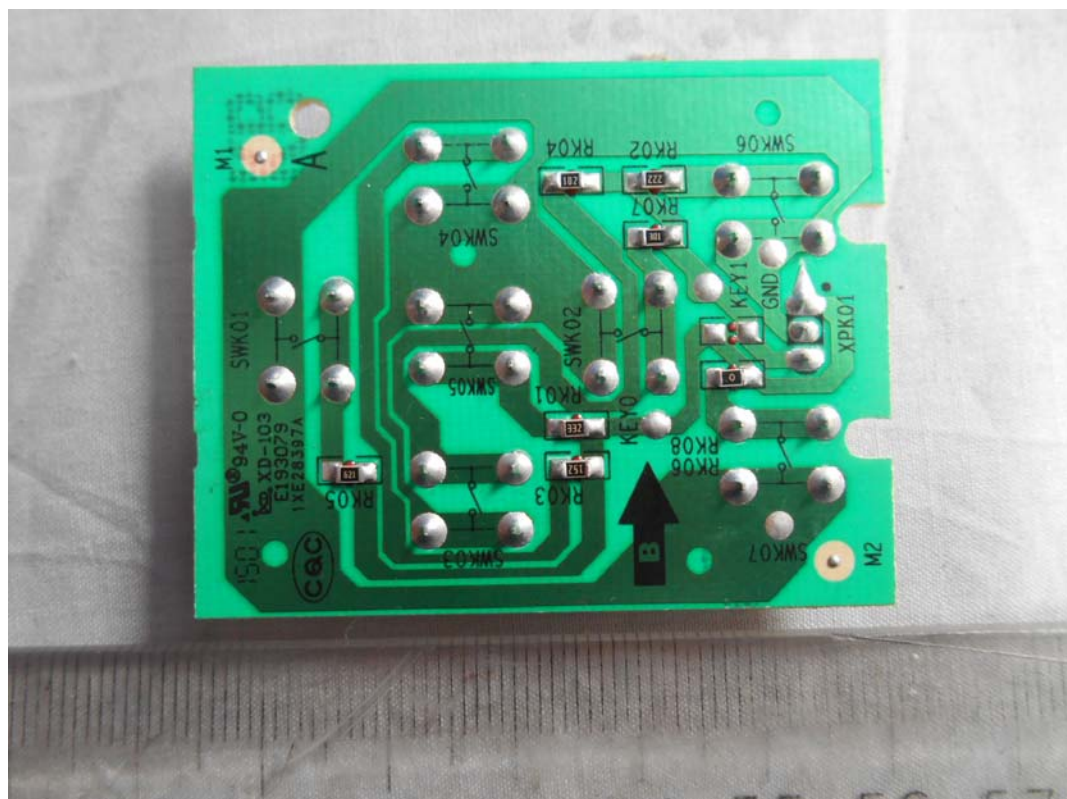


FIGURE 11
LED LCD TV (M/N: LTDN50K3201GUWUS)
RF BOARD (COMPONENT SIDE)

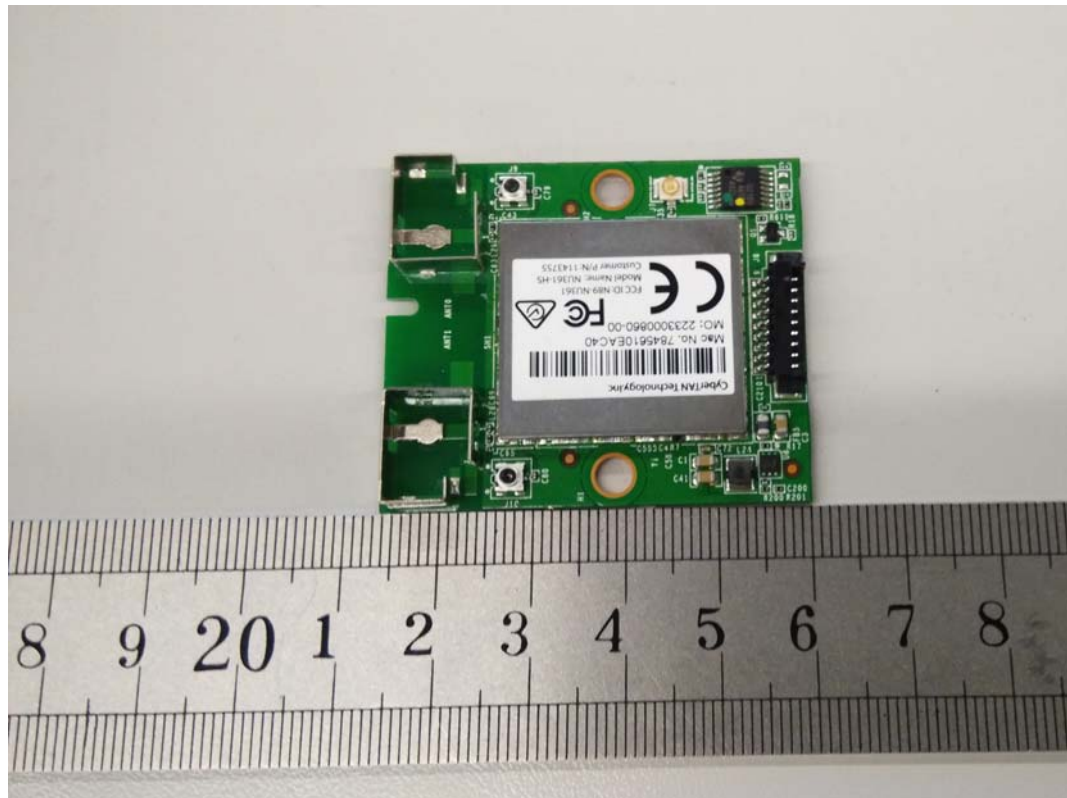


FIGURE 12
LED LCD TV (M/N: LTDN50K3201GUWUS)
RF BOARD (SOLDERED SIDE)



FIGURE 13
LED LCD TV (M/N: LTDN50K3201GUWUS)
RF BOARD (COVER REMOVED)

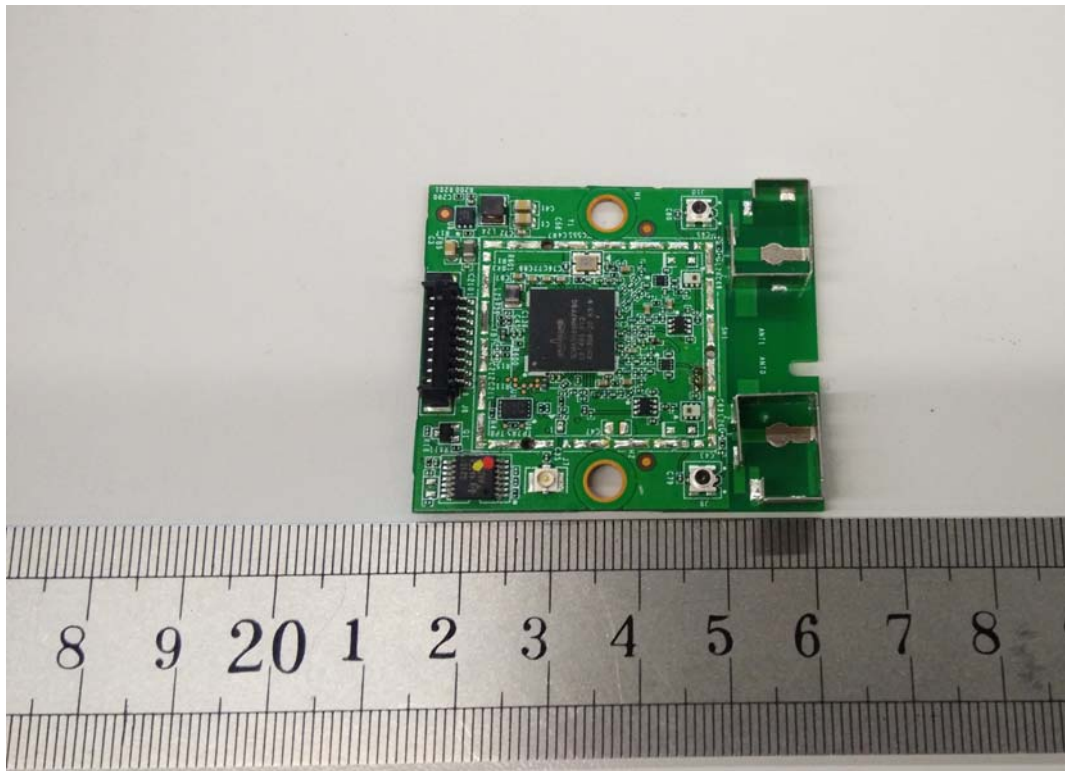


FIGURE 14
LED LCD TV (M/N: LTDN50K3201GUWUS)
CHIP AND CRYSTAL ON RF BOARD

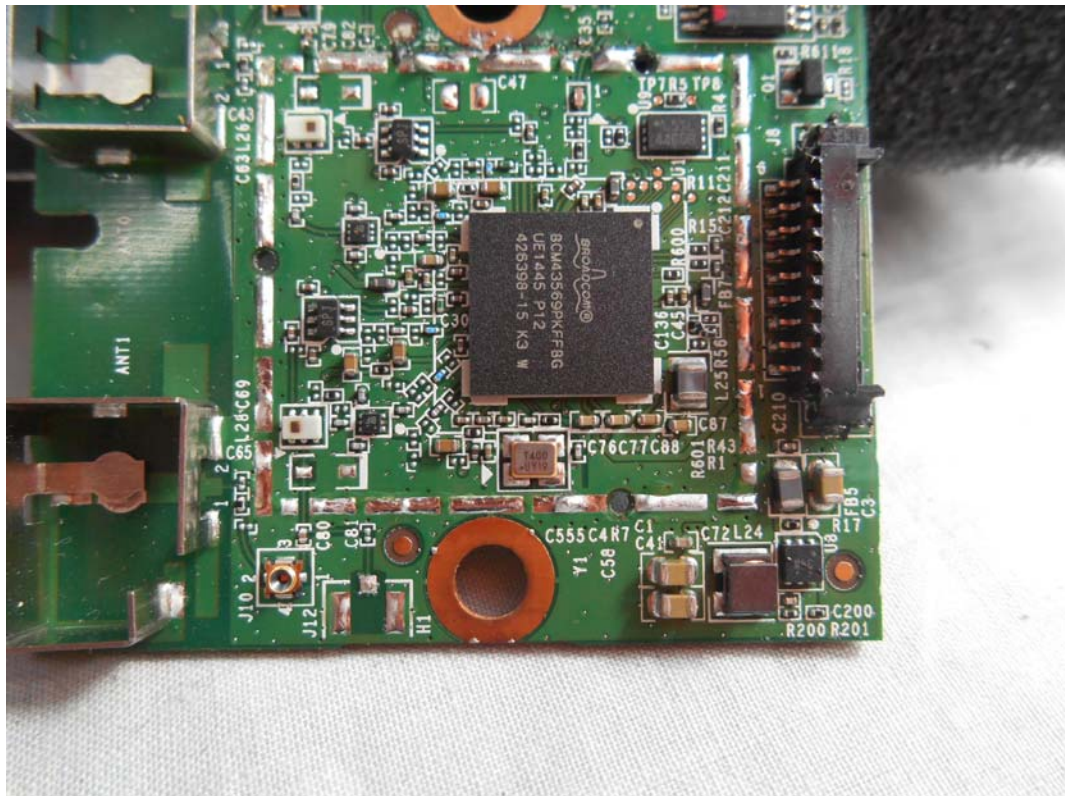


FIGURE 15
LED LCD TV (M/N: LTDN50K3201GUWUS)
SIGNAL BOARD (COMPONENT SIDE)



FIGURE 16
LED LCD TV (M/N: LTDN50K3201GUWUS)
SIGNAL BOARD (SOLDERED SIDE)

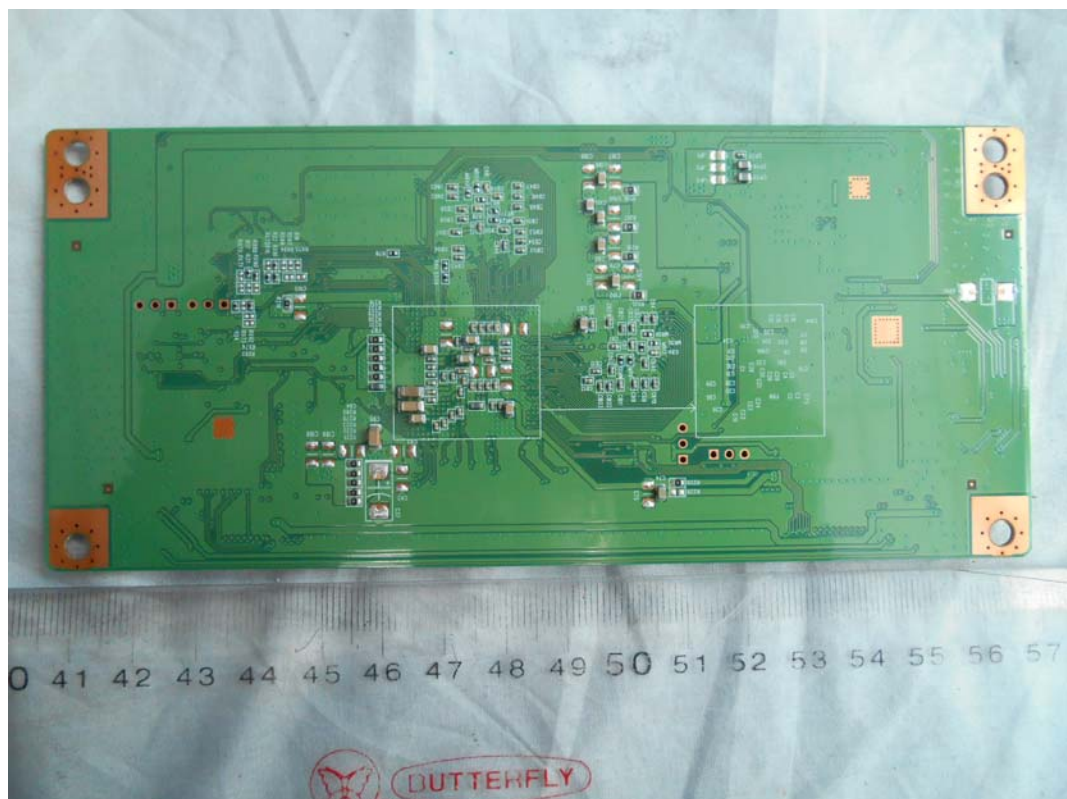


FIGURE 17
LED LCD TV (M/N: LTDN50K3201GUWUS)
CHIP AND CRYSTAL ON SIGNAL BOARD



FIGURE 18
LED LCD TV (M/N: LTDN50K3201GUWUS)
POWER BOARD (COMPONENT SIDE)

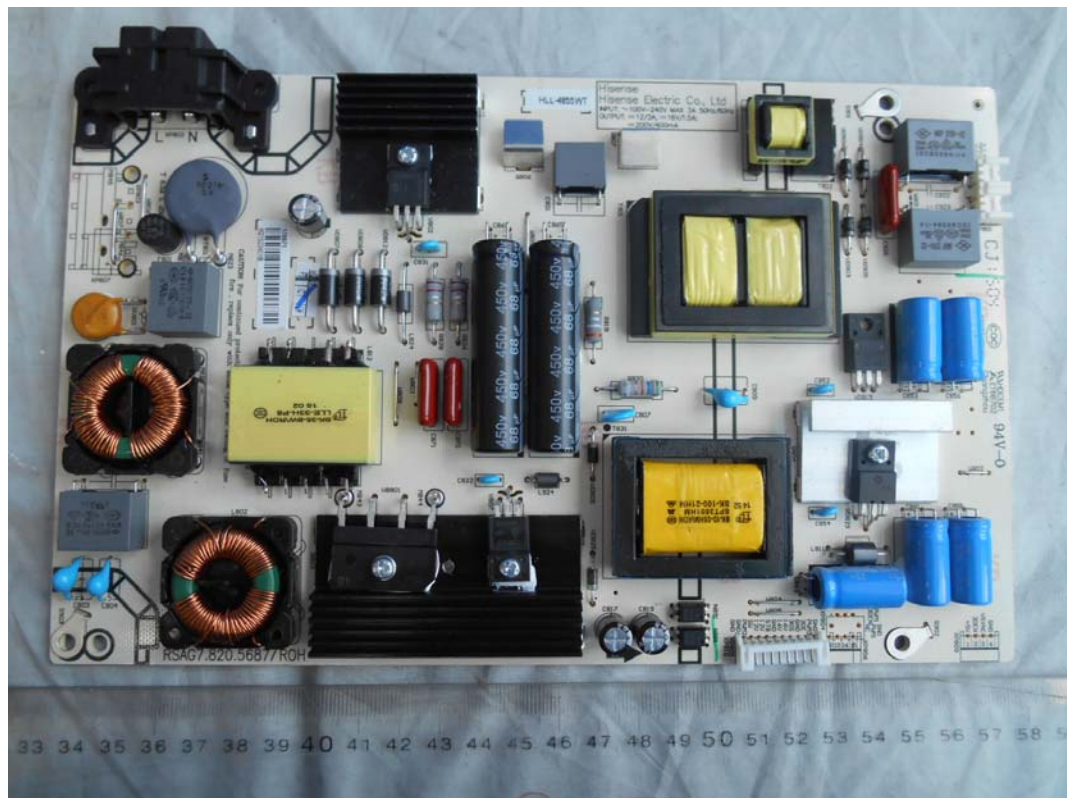


FIGURE 19
LED LCD TV (M/N: LTDN50K3201GUWUS)
POWER BOARD (SOLDERED SIDE)

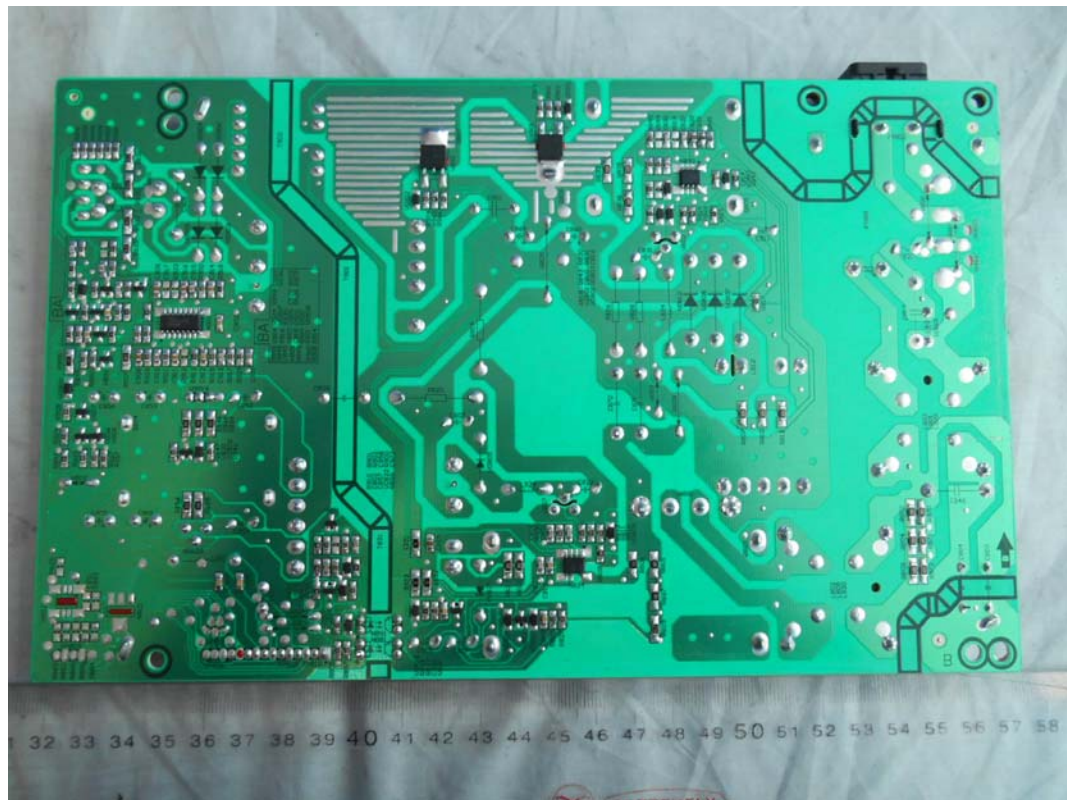


FIGURE 20
LED LCD TV (M/N: LTDN50K3201GUWUS)
DEBUG #1



FIGURE 21
LED LCD TV (M/N: LTDN50K3201GUWUS)
DEBUG #2



FIGURE 22
LED LCD TV (M/N: LTDN50K3201GUWUS)
DEBUG #3

