

FIGURE 1
LED LCD TV (M/N: 55H6B)
COVER REMOVED

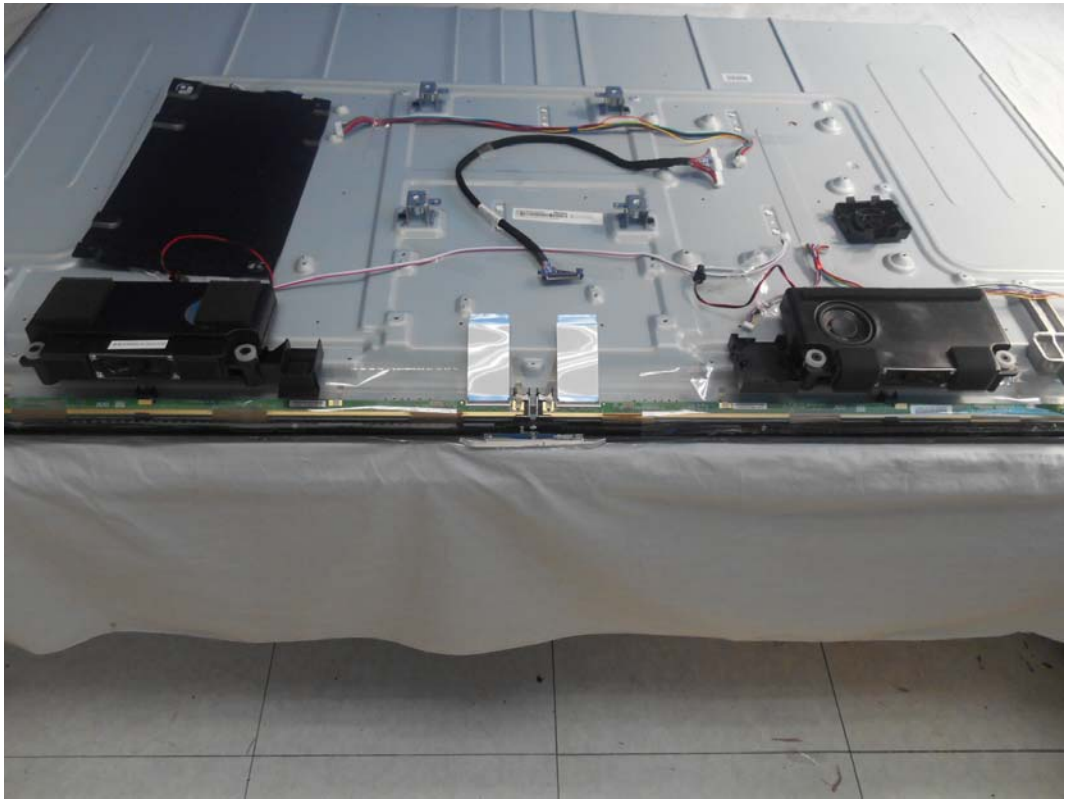


FIGURE 2
LED LCD TV (M/N: 55H6B)
LCD PANEL LABEL



FIGURE 3
LED LCD TV (M/N: 55H6B)
MAIN BOARD (COMPONENT SIDE)



FIGURE 4
LED LCD TV (M/N: 55H6B)
MAIN BOARD (SOLDERED SIDE)

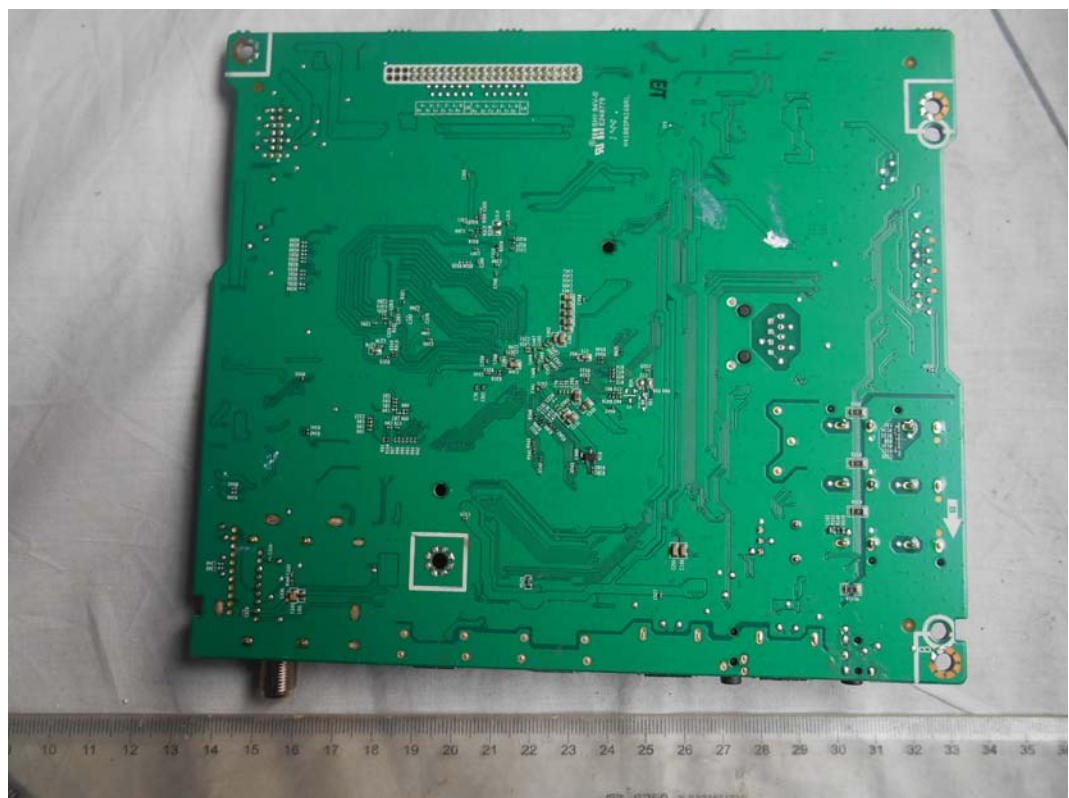


FIGURE 5
LED LCD TV (M/N: 55H6B)
CHIP #1 AND CRYSTAL ON MAIN BOARD

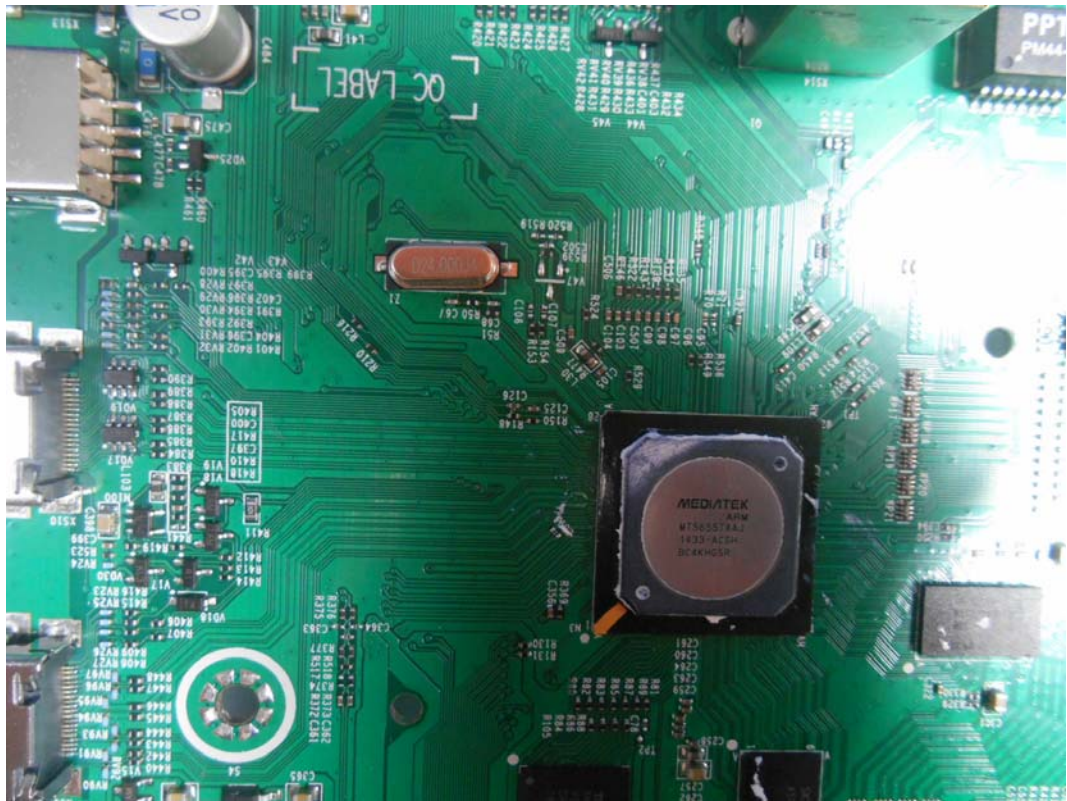


FIGURE 6
LED LCD TV (M/N: 55H6B)
CHIP #2 ON MAIN BOARD

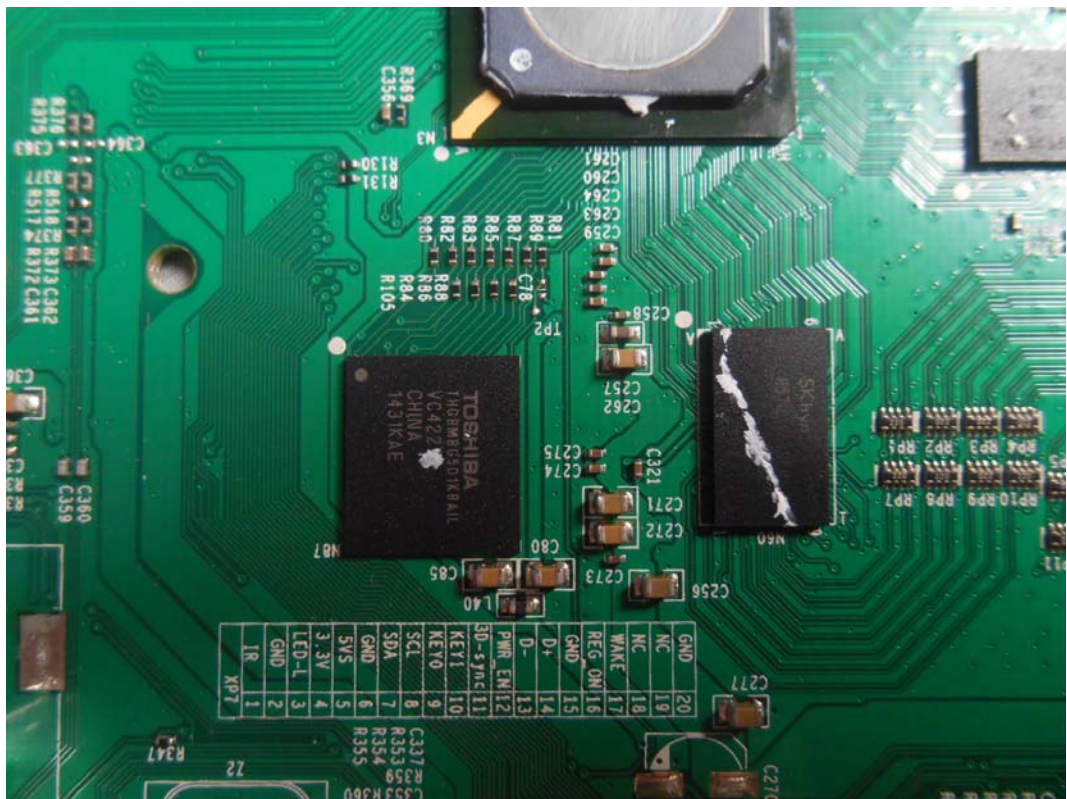


FIGURE 7
LED LCD TV (M/N: 55H6B)
TUNER ON MAIN BOARD



FIGURE 8
LED LCD TV (M/N: 55H6B)
TUNER COVER REMOVED

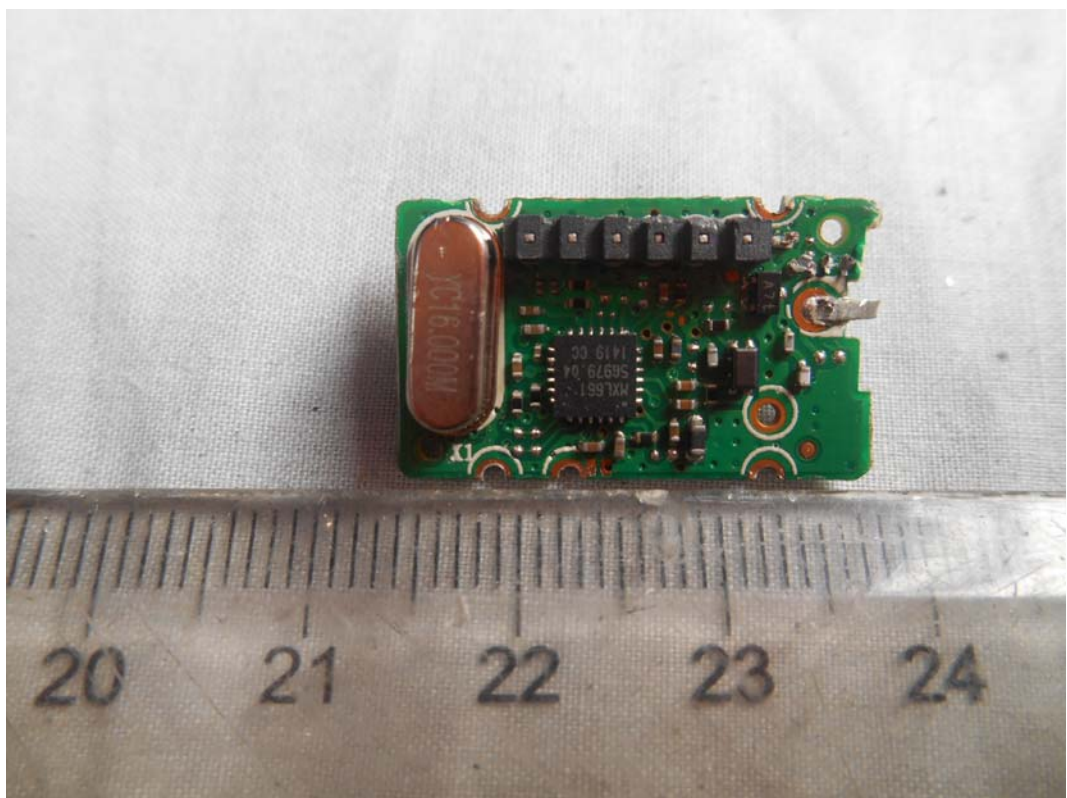


FIGURE 9
LED LCD TV (M/N: 55H6B)
KEY BOARD (COMPONENT SIDE)

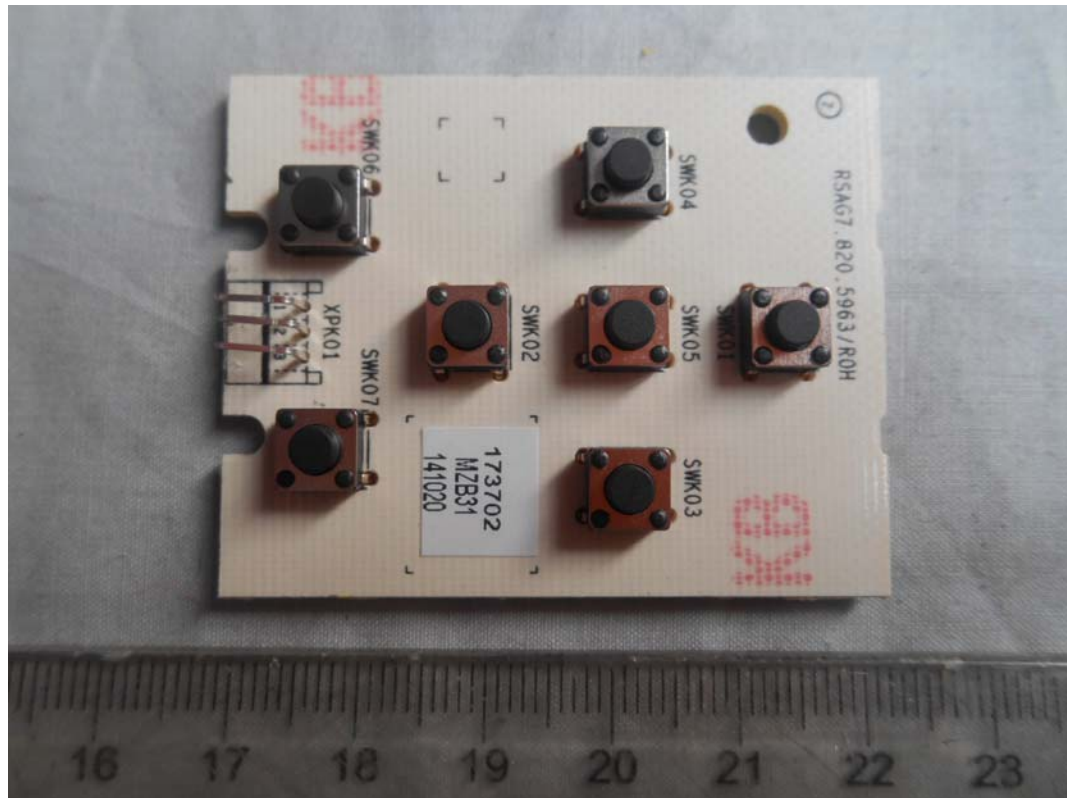


FIGURE 10
LED LCD TV (M/N: 55H6B)
KEY BOARD (SOLDERED SIDE)

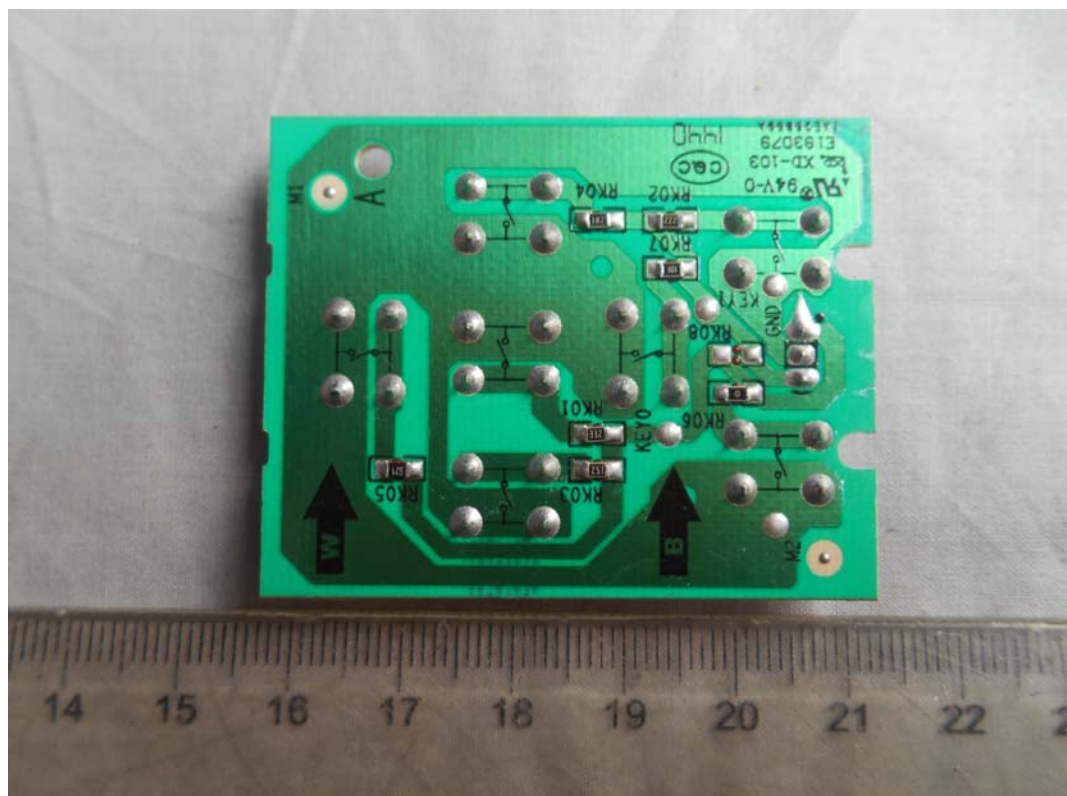


FIGURE 11
LED LCD TV (M/N: 55H6B)
RF BOARD (COMPONENT SIDE)



FIGURE 12
LED LCD TV (M/N: 55H6B)
RF BOARD (SOLDERED SIDE)



FIGURE 13
LED LCD TV (M/N: 55H6B)
SIGNAL BOARD (COMPONENT SIDE)

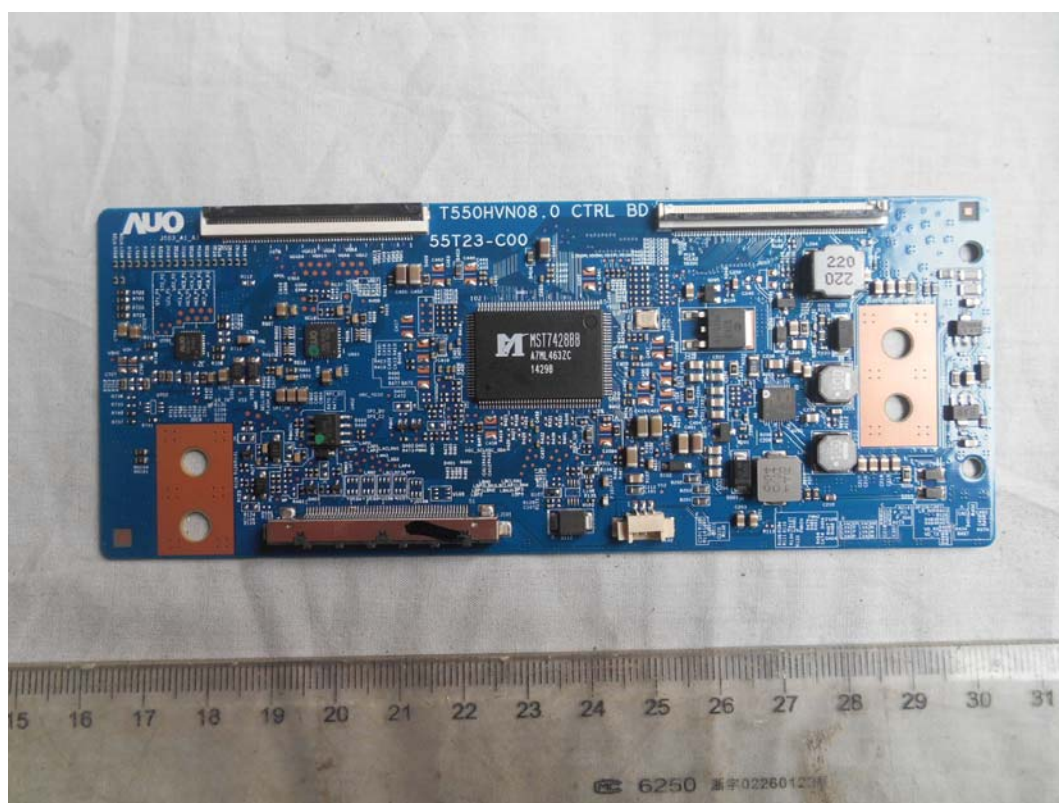


FIGURE 14
LED LCD TV (M/N: 55H6B)
SIGNAL BOARD (SOLDERED SIDE)

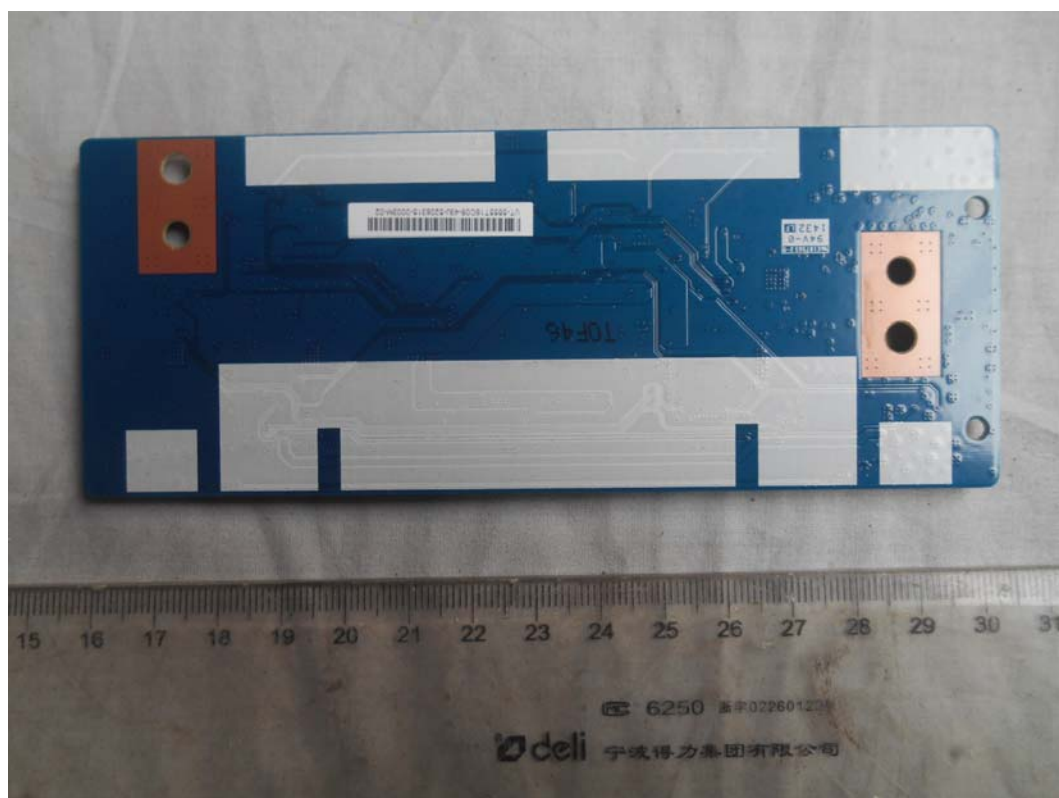


FIGURE 15
LED LCD TV (M/N: 55H6B)
POWER BOARD (COMPONENT SIDE)

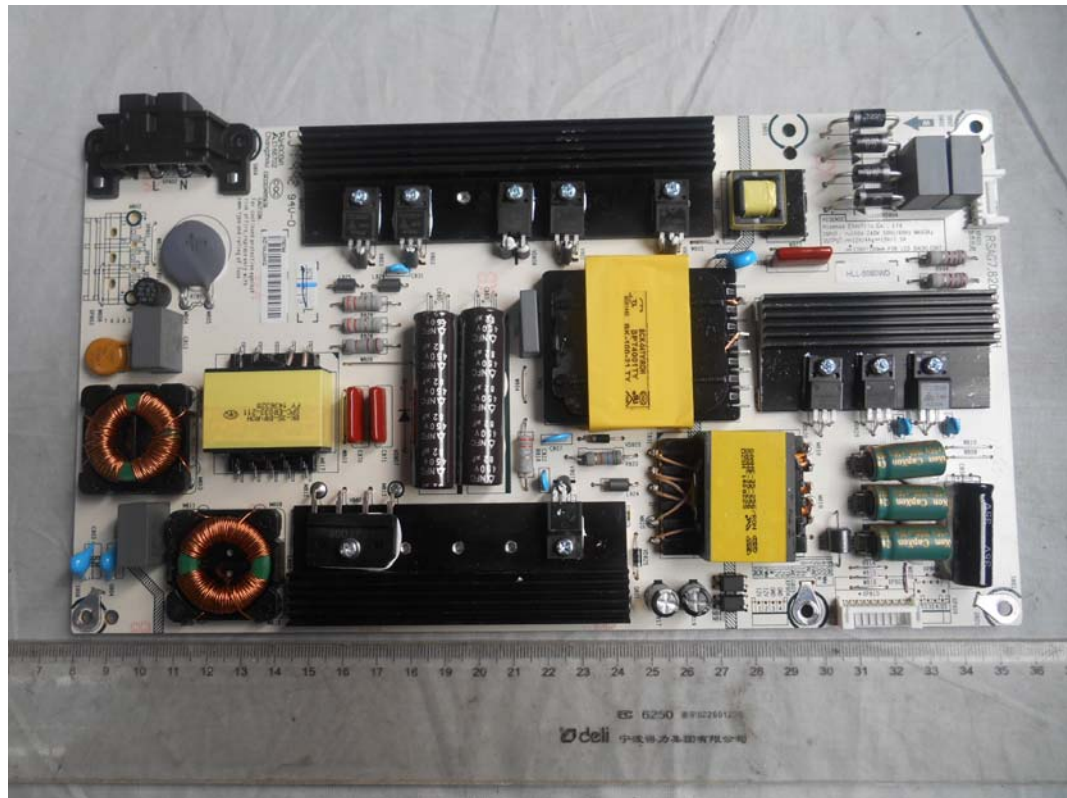


FIGURE 16
LED LCD TV (M/N: 55H6B)
POWER BOARD (SOLDERED SIDE)

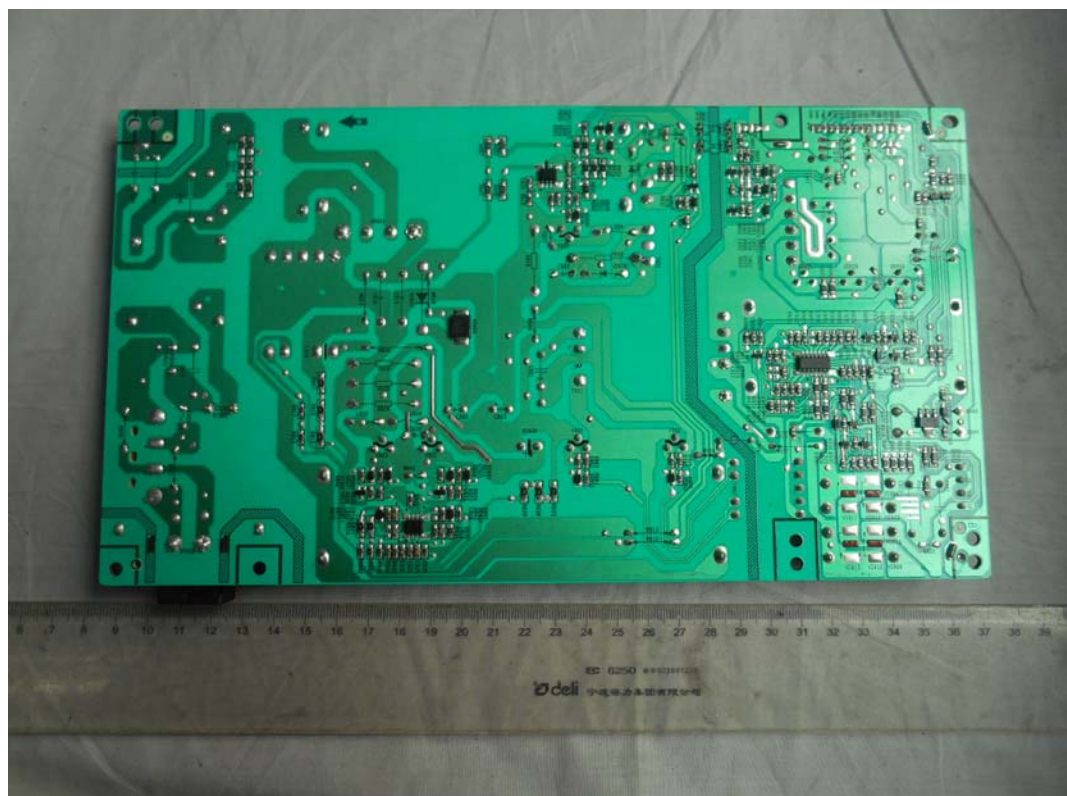


FIGURE 17
LED LCD TV (M/N: 55H6B)
DEBUG

