

FIGURE 1
LED LCD TV (M/N: LTDN55XT880WUS)
COVER REMOVED



FIGURE 2
LED LCD TV (M/N: LTDN55XT880WUS)
PANEL LABEL

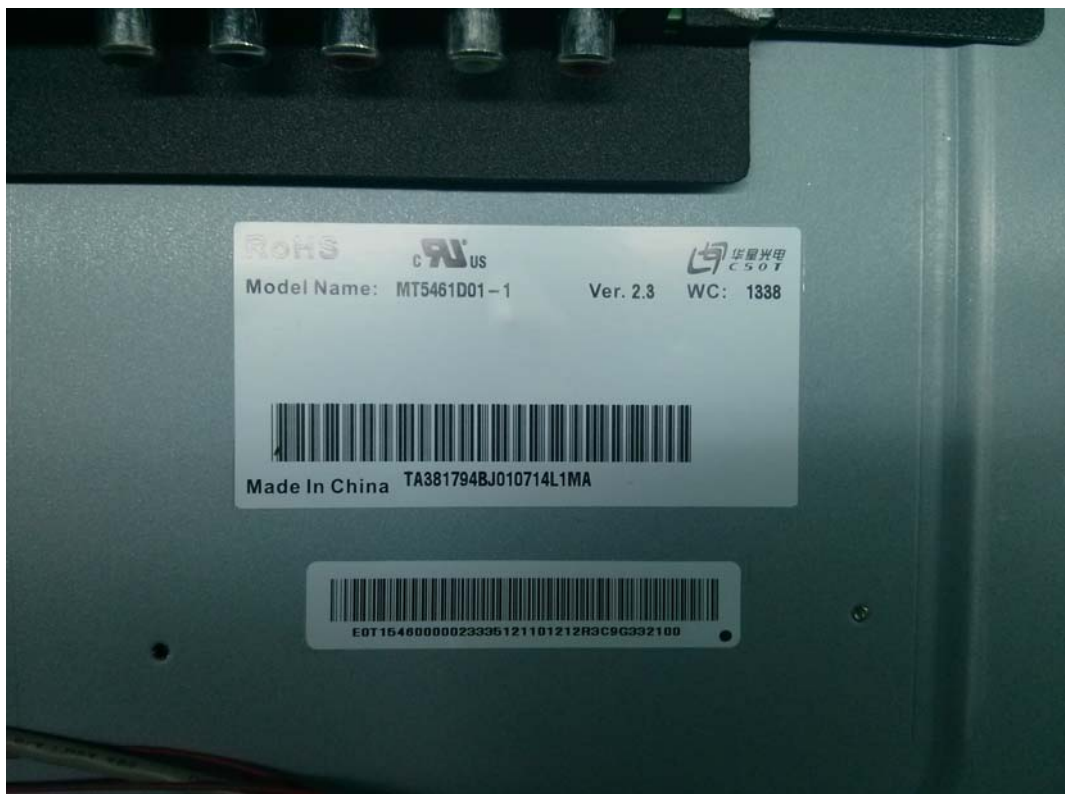


FIGURE 3
LED LCD TV (M/N: LTDN55XT880WUS)
POWER BOARD (COMPONENT SIDE)

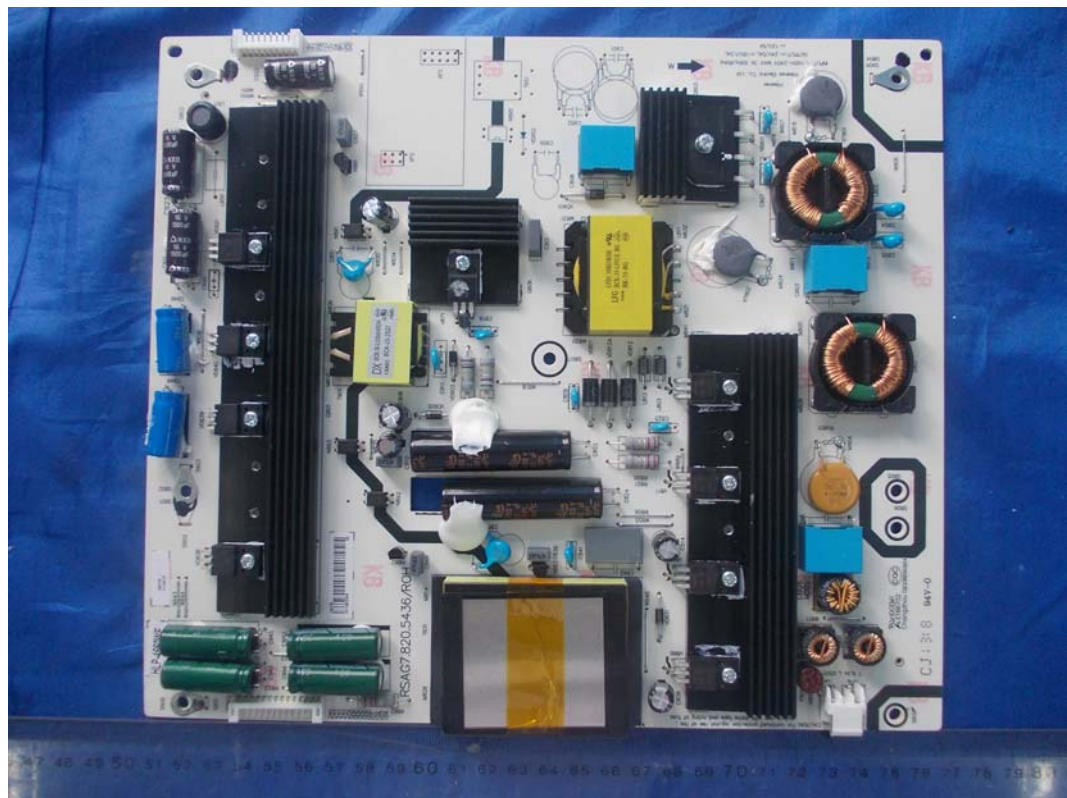


FIGURE 4
LED LCD TV (M/N: LTDN55XT880WUS)
POWER BOARD (SOLDERED SIDE)



FIGURE 5
LED LCD TV (M/N: LTDN55XT880WUS)
MAIN BOARD (COMPONENT SIDE)



FIGURE 6
LED LCD TV (M/N: LTDN55XT880WUS)
MAIN BOARD (SOLDERED SIDE)

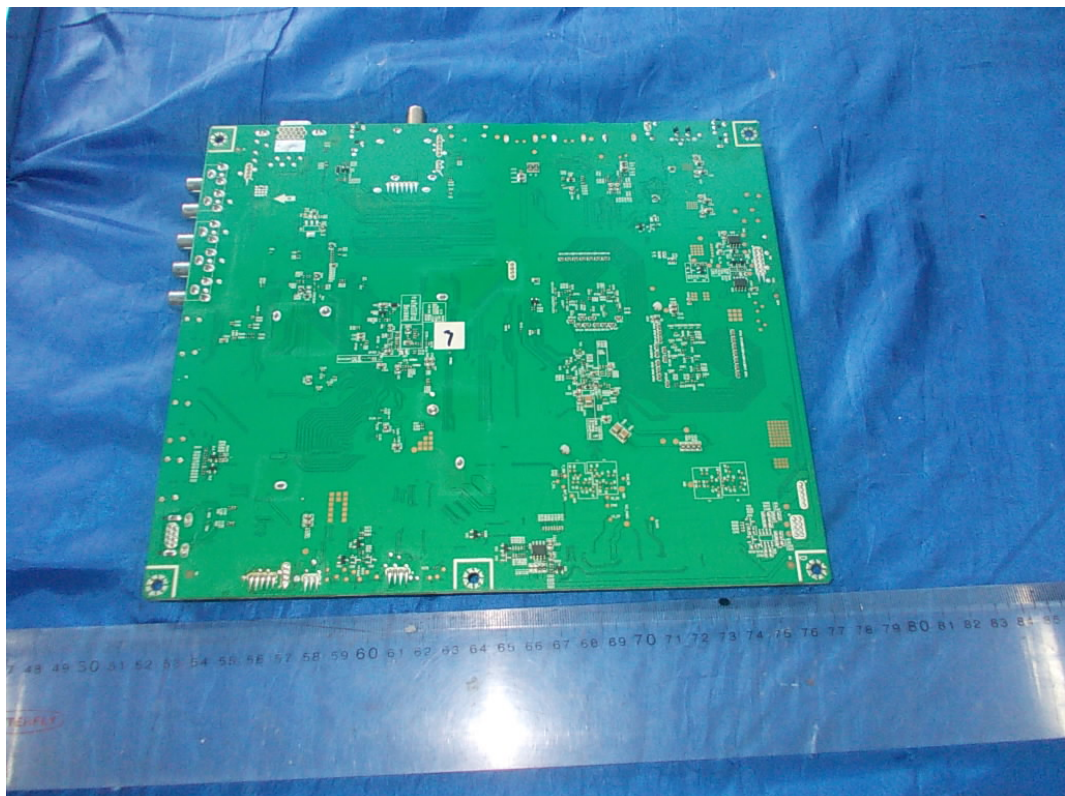


FIGURE 7
LED LCD TV (M/N: LTDN55XT880WUS)
TUNER ON MAIN BOARD



FIGURE 8
LED LCD TV (M/N: LTDN55XT880WUS)
CHIP #1 ON MAIN BOARD



FIGURE 9
LED LCD TV (M/N: LTDN55XT880WUS)
CHIP #2 ON MAIN BOARD



FIGURE 10
LED LCD TV (M/N: LTDN55XT880WUS)
CRYSTAL #1 ON MAIN BOARD



FIGURE 11
LED LCD TV (M/N: LTDN55XT880WUS)
CRYSTAL #2 ON MAIN BOARD

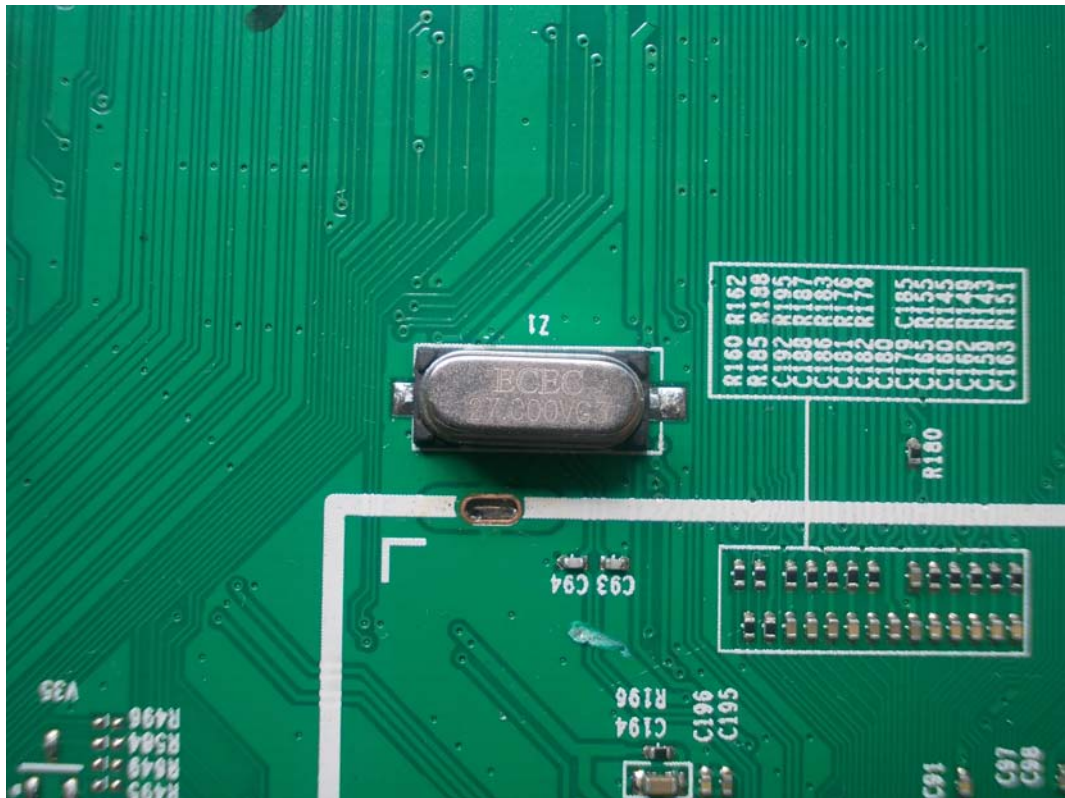


FIGURE 12
LED LCD TV (M/N: LTDN55XT880WUS)
CRYSTAL #3 ON MAIN BOARD

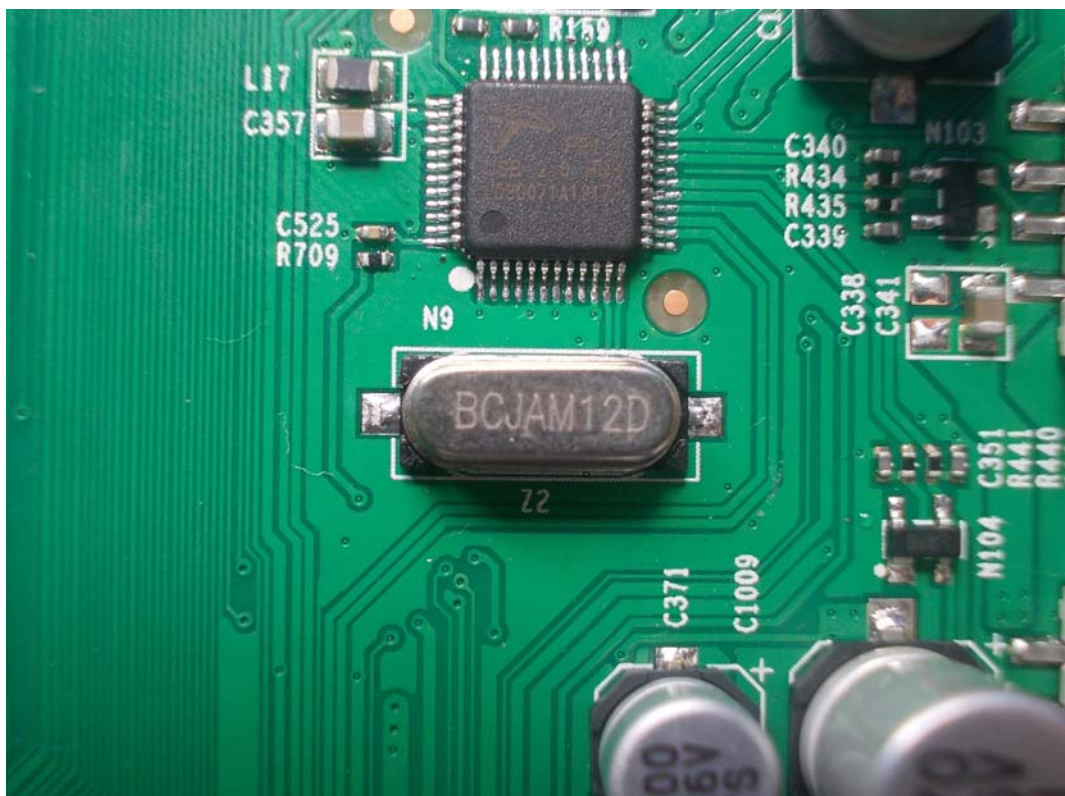


FIGURE 13
LED LCD TV (M/N: LTDN55XT880WUS)
LCD PANEL CONTROL BOARD (COMPONENT SIDE)

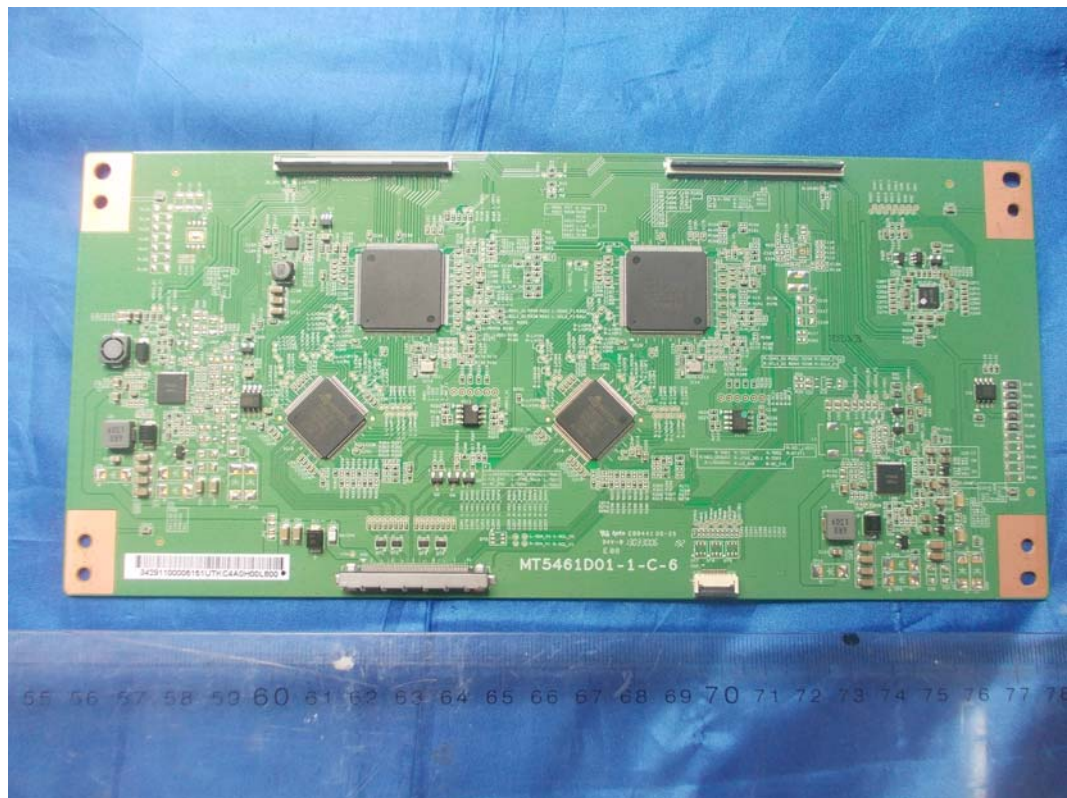


FIGURE 14
LED LCD TV (M/N: LTDN55XT880WUS)
LCD PANEL CONTROL BOARD (SOLDERED SIDE)



FIGURE 15
LED LCD TV (M/N: LTDN55XT880WUS)
CHIP ON LCD PANEL CONTROL BOARD

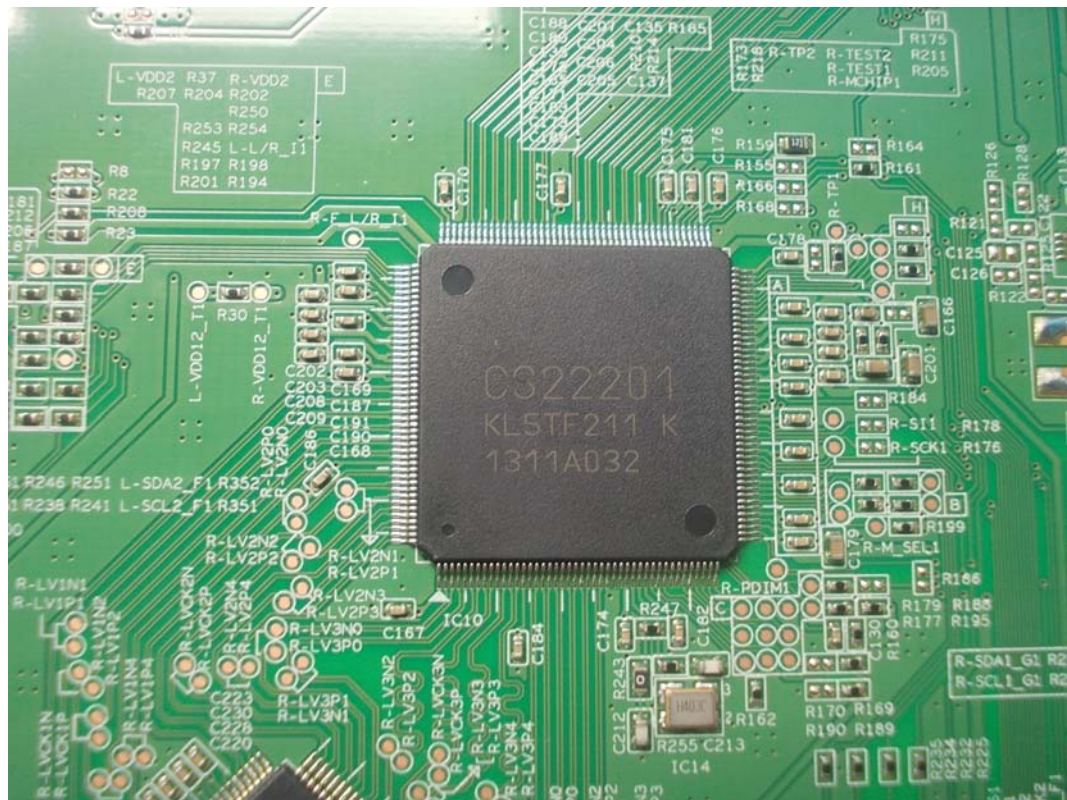


FIGURE 16
LED LCD TV (M/N: LTDN55XT880WUS)
KEY BOARD (COMPONENT SIDE)

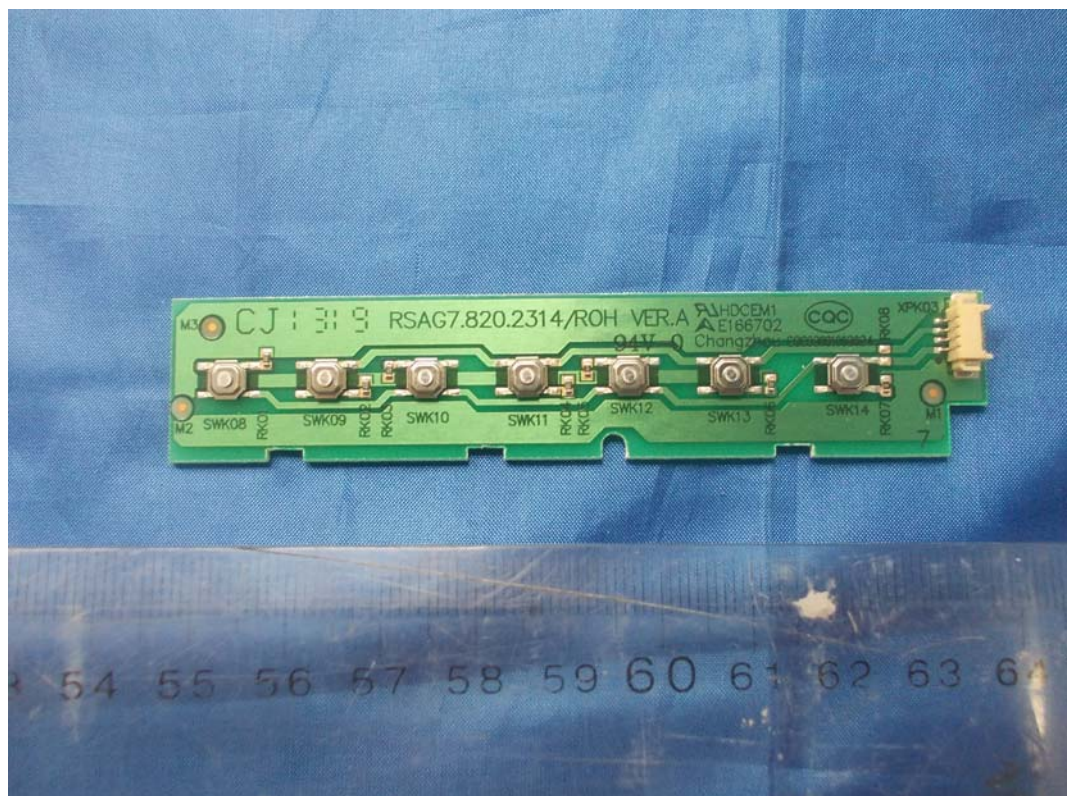


FIGURE 17
LED LCD TV (M/N: LTDN55XT880WUS)
KEY BOARD (SOLDERED SIDE)

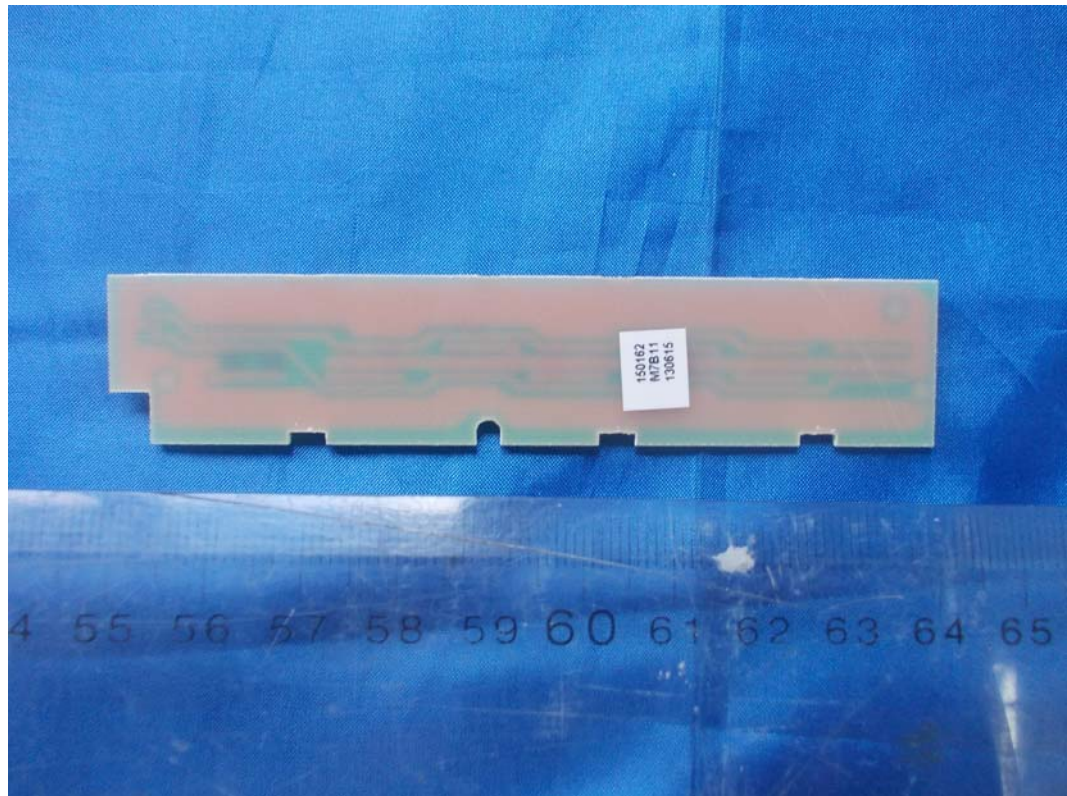


FIGURE 18
LED LCD TV (M/N: LTDN55XT880WUS)
RF BOARD (COMPONENT SIDE)



FIGURE 19
LED LCD TV (M/N: LTDN55XT880WUS)
RF BOARD (SOLDERED SIDE)

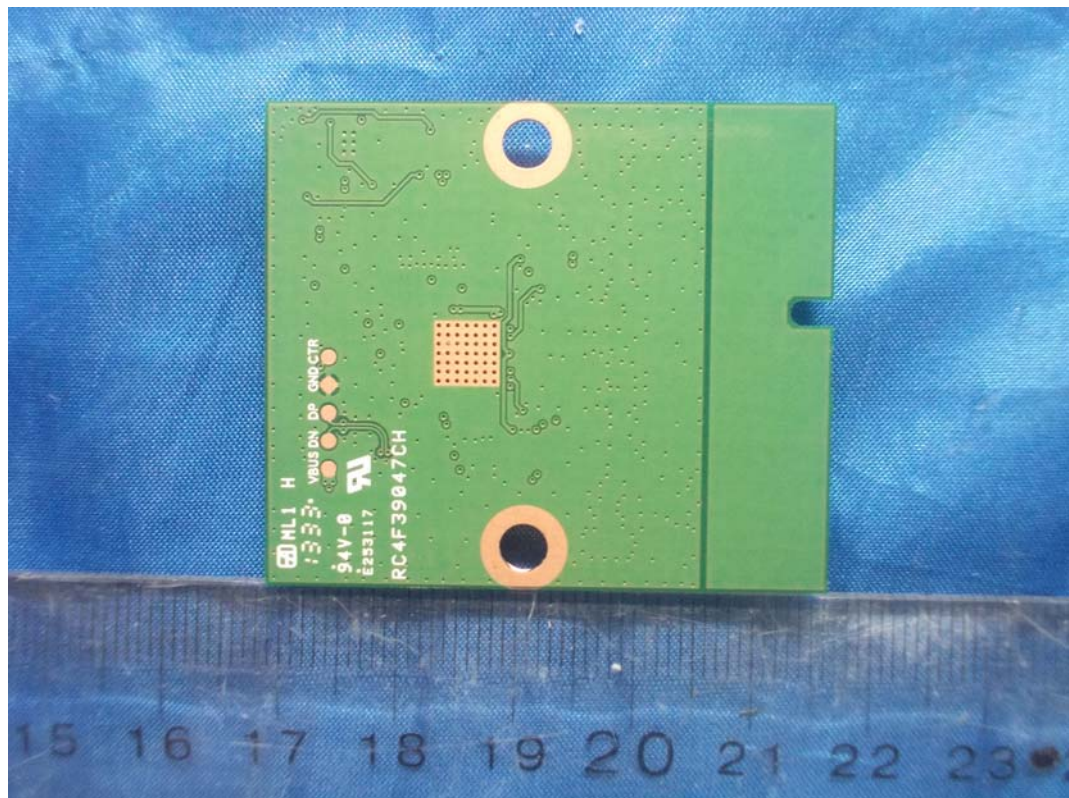


FIGURE 20
LED LCD TV (M/N: LTDN55XT880WUS)
BOARD #1 (COMPONENT SIDE)

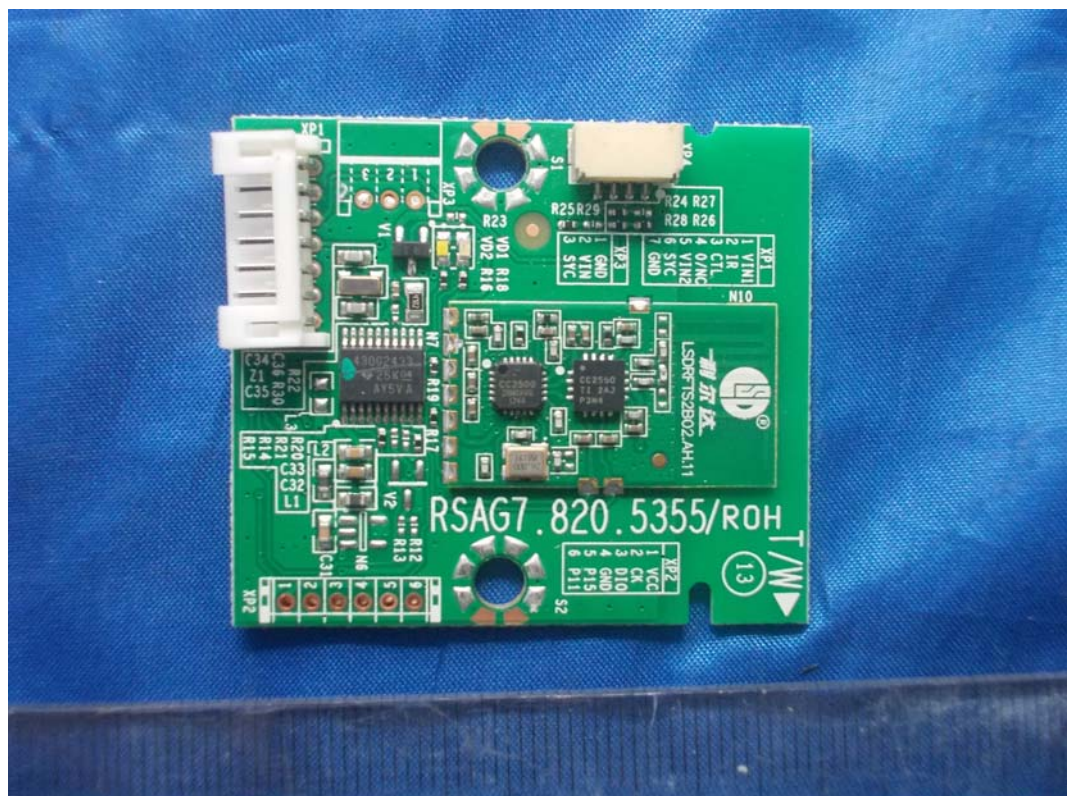


FIGURE 21
LED LCD TV (M/N: LTDN55XT880WUS)
BOARD #1 (SOLDERED SIDE)



FIGURE 22
LED LCD TV (M/N: LTDN55XT880WUS)
BOARD #2 (COMPONENT SIDE)

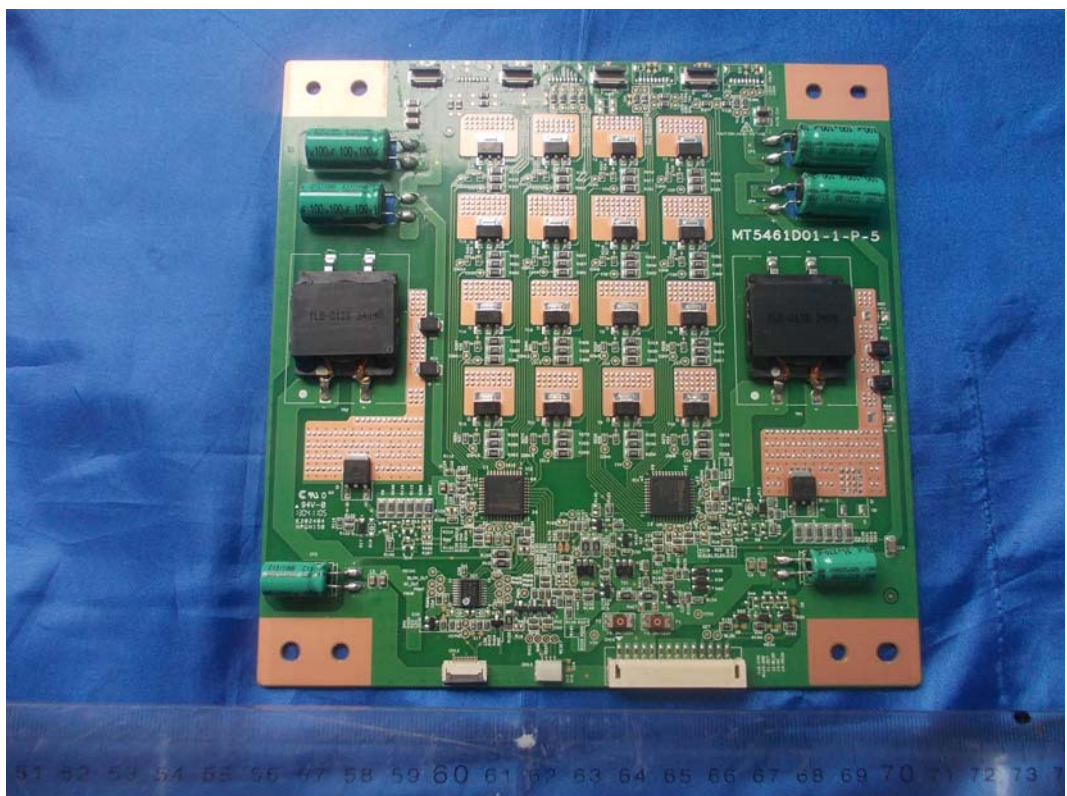


FIGURE 23
LED LCD TV (M/N: LTDN55XT880WUS)
BOARD #2 (SOLDERED SIDE)

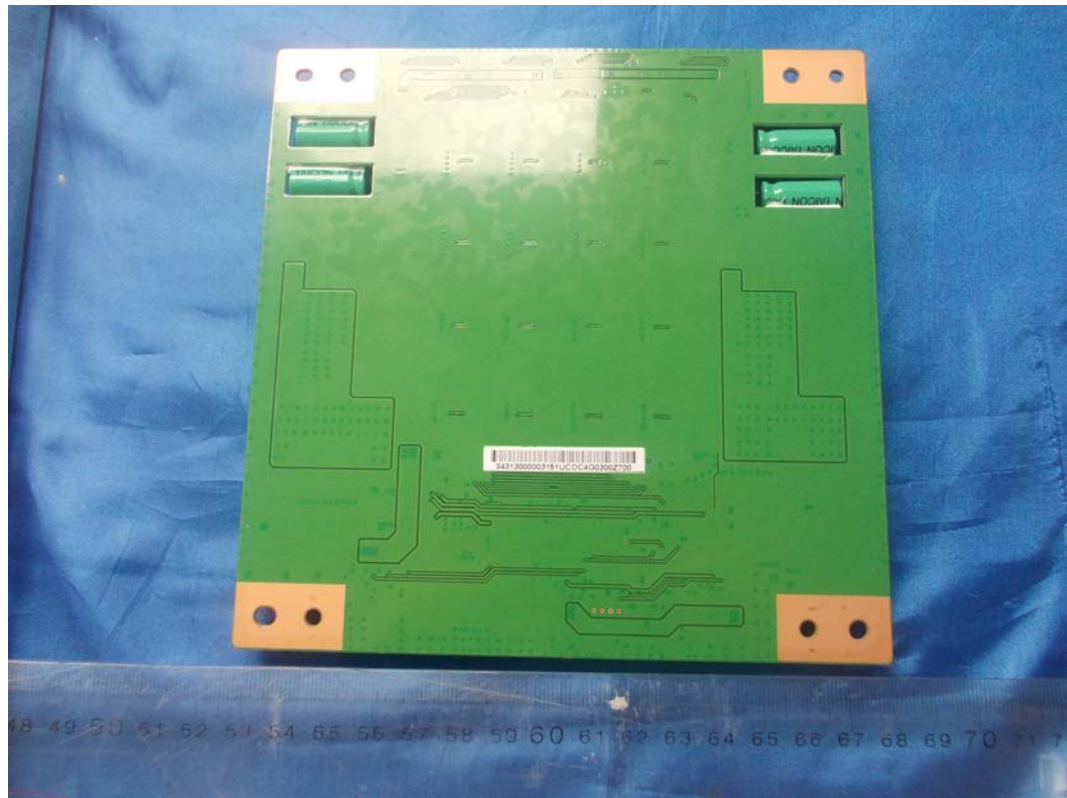


FIGURE 24
LED LCD TV (M/N: LTDN55XT880WUS)
DEBUG #1



A close-up photograph of a custom printed circuit board (PCB) assembly. A multi-colored ribbon cable, featuring red, orange, yellow, green, blue, and purple conductors, is soldered to the board. Two square, silver-colored heat sinks are mounted on the board, one on each side of the cable's connection point. The PCB is a light gray color and has some text printed on it, including "00111111" and "00111111". The background is a dark, textured surface.

FIGURE 29
LED LCD TV (M/N: LTDN55XT880WUS)
DEBUG #6

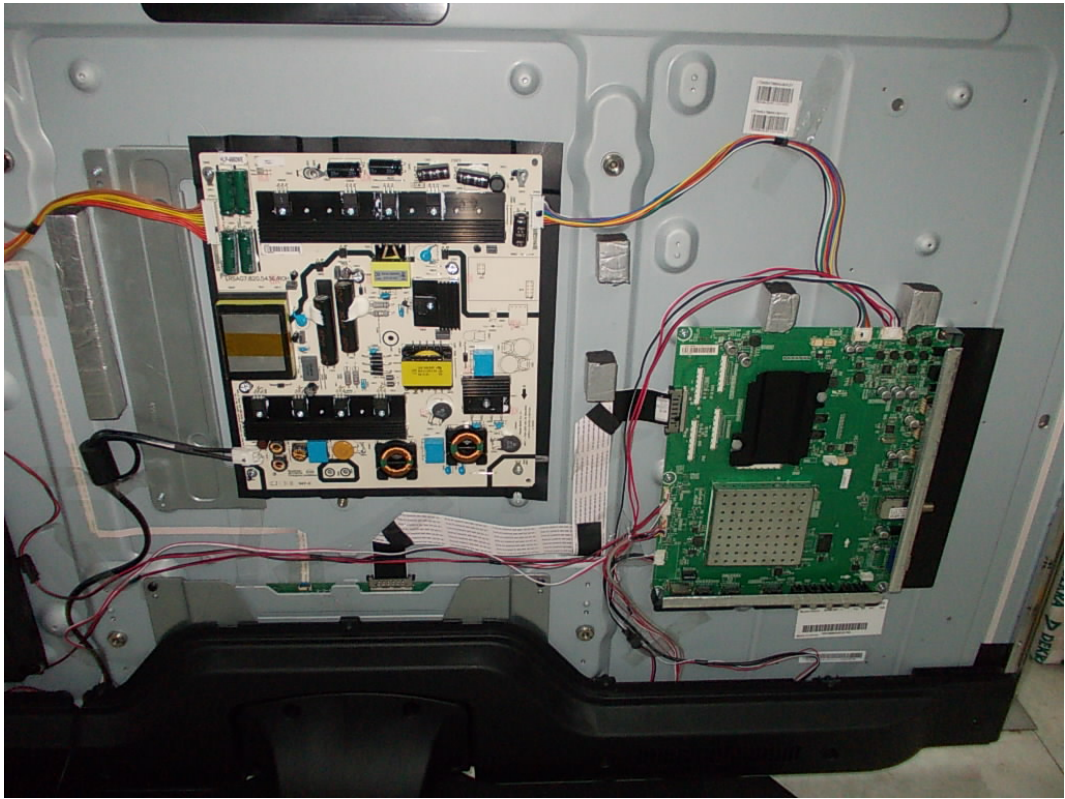


FIGURE 30
LED LCD TV (M/N: LTDN55XT880WUS)
DEBUG #7

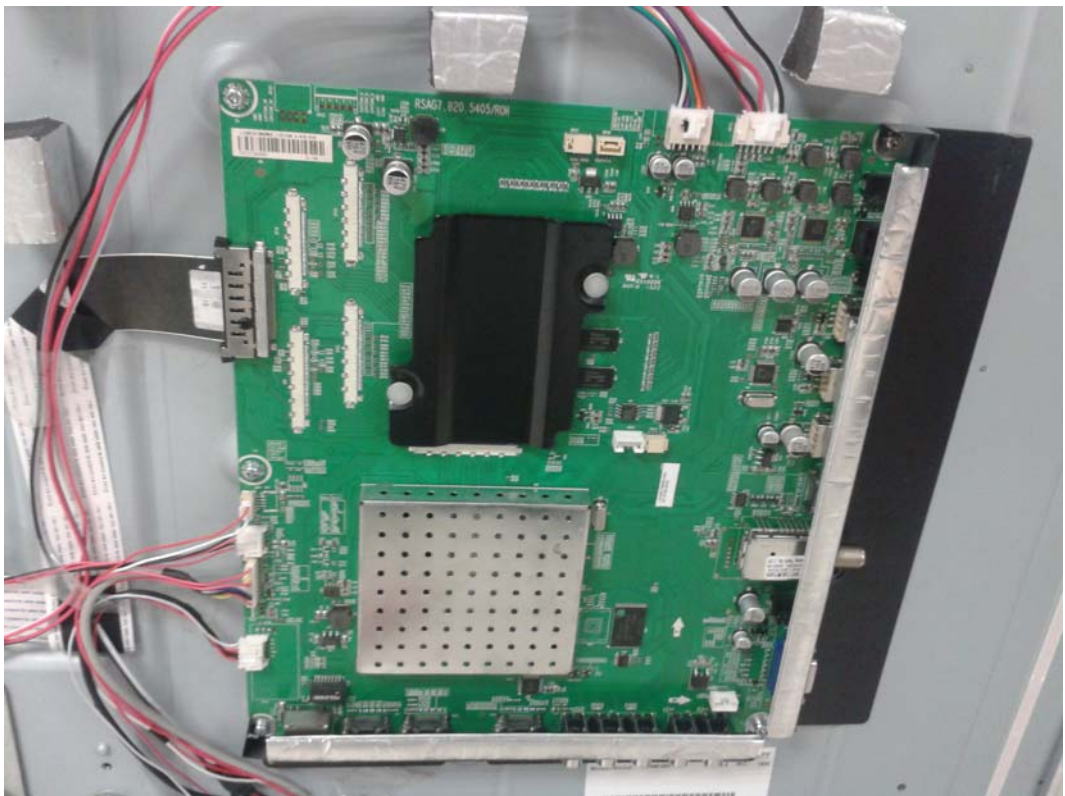


FIGURE 31
LED LCD TV (M/N: LTDN55XT880WUS)
DEBUG #8

