

FIGURE 1
LED LCD TV (M/N: 48H4C)
COVER REMOVED



FIGURE 2
LED LCD TV (M/N: 48H4C)
LCD PANEL LABEL



FIGURE 3
LED LCD TV (M/N: 48H4C)
POWER BOARD (COMPONENT SIDE)



FIGURE 4
LED LCD TV (M/N: 48H4C)
POWER BOARD (SOLDERED SIDE)



FIGURE 5
LED LCD TV (M/N: 48H4C)
MAIN BOARD (COMPONENT SIDE)



FIGURE 6
LED LCD TV (M/N: 48H4C)
MAIN BOARD (SOLDERED SIDE)



FIGURE 7
LED LCD TV (M/N: 48H4C)
CHIP & CRYSTAL ON MAIN BOARD



FIGURE 8
LED LCD TV (M/N: 48H4C)
TUNER



FIGURE 9
LED LCD TV (M/N: 48H4C)
TUNER BOARD (COMPONENT SIDE)



FIGURE 10
LED LCD TV (M/N: 48H4C)
TUNER BOARD (SOLDERED SIDE)



FIGURE 11
LED LCD TV (M/N: 48H4C)
CHIP & CRYSTAL ON TUNER BOARD



FIGURE 12
LED LCD TV (M/N: 48H4C)
RF BOARD (COMPONENT SIDE)



FIGURE 13
LED LCD TV (M/N: 48H4C)
RF BOARD (SOLDERED SIDE)

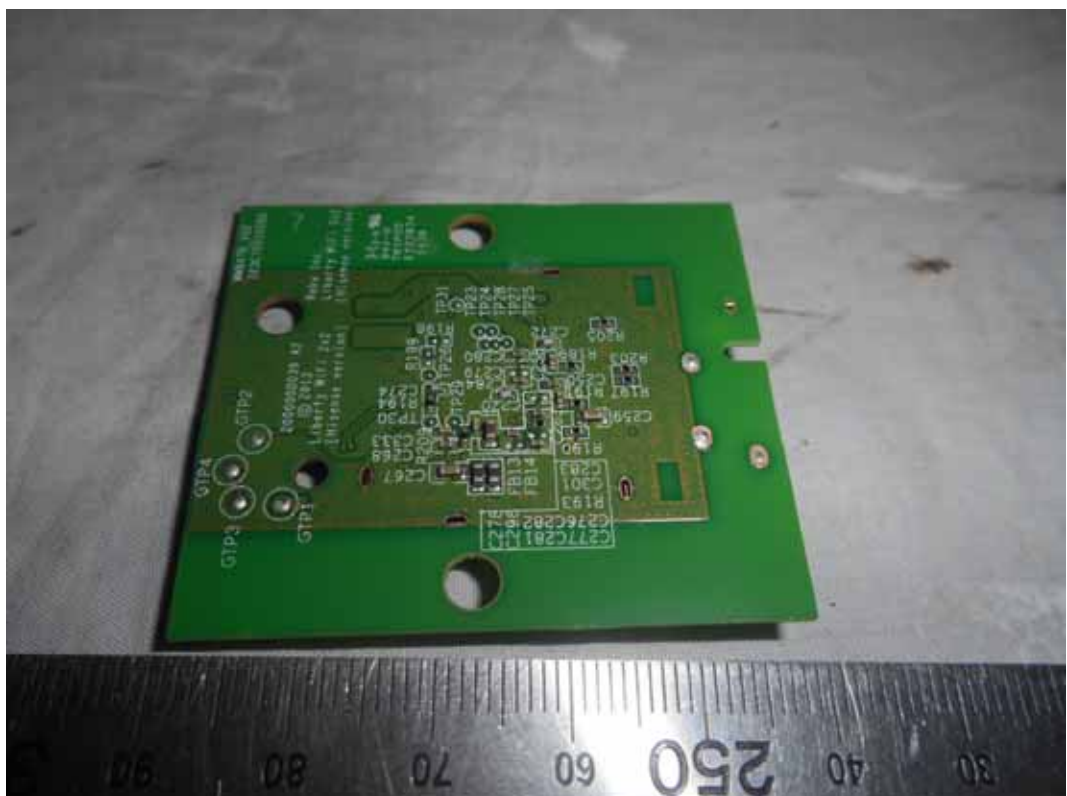


FIGURE 16
LED LCD TV (M/N: 48H4C)
KEY BOARD (COMPONENT SIDE)



FIGURE 17
LED LCD TV (M/N: 48H4C)
KEY BOARD (SOLDERED SIDE)

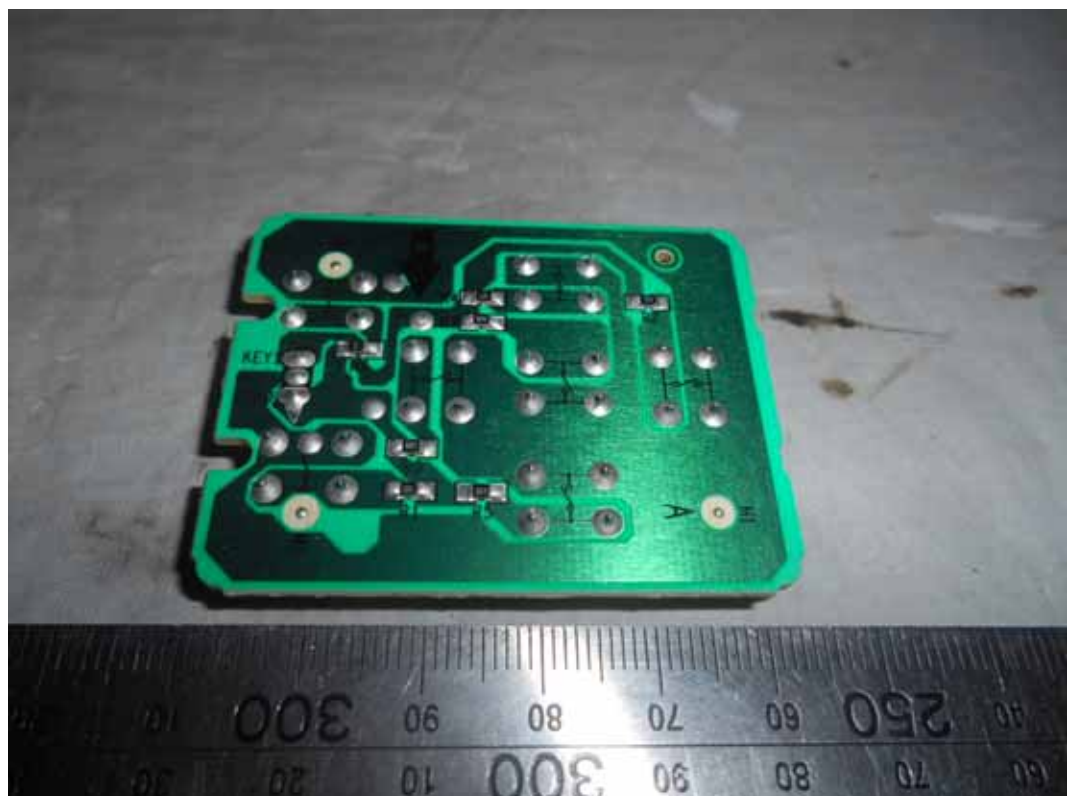


FIGURE 18
LED LCD TV (M/N: 48H4C)
IR BOARD (COMPONENT SIDE)



FIGURE 19
LED LCD TV (M/N: 48H4C)
IR BOARD (SOLDERED SIDE)



FIGURE 20
LED LCD TV (M/N: 48H4C)
DEBUG

