

FIGURE 1
LED LCD TV (M/N: 40H5B)
COVER REMOVED



FIGURE 2
LED LCD TV (M/N: 40H5B)
MAIN BOARD (COMPONENT SIDE)



FIGURE 3
LED LCD TV (M/N: 40H5B)
MAIN BOARD (SOLDERED SIDE)

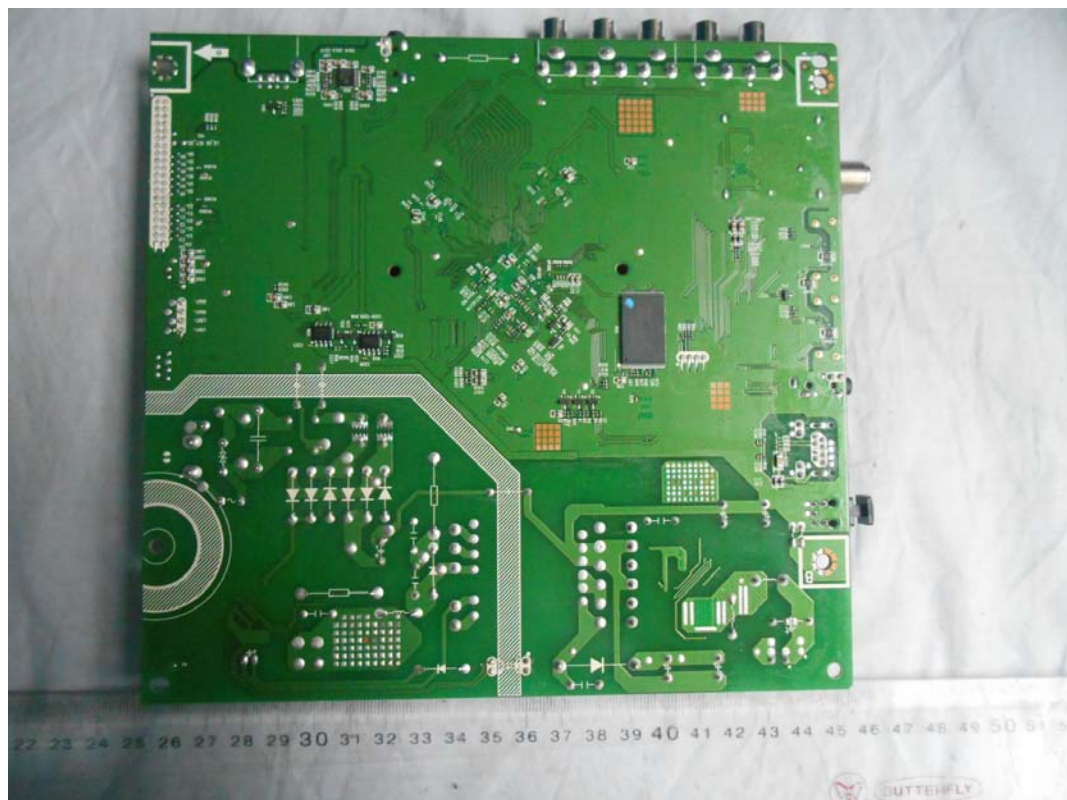


FIGURE 4
LED LCD TV (M/N: 40H5B)
CRYSTAL#1 AND CHIP#1 ON MAIN BOARD

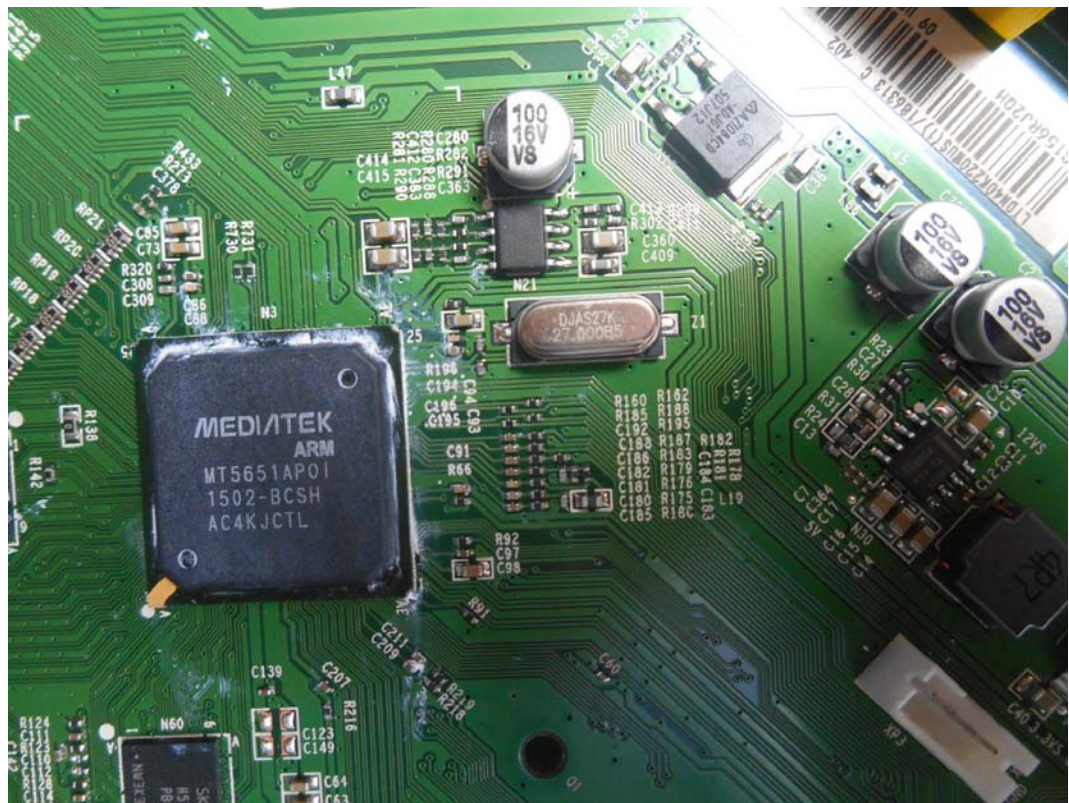


FIGURE 5
LED LCD TV (M/N: 40H5B)
CHIP#2 ON MAIN BOARD

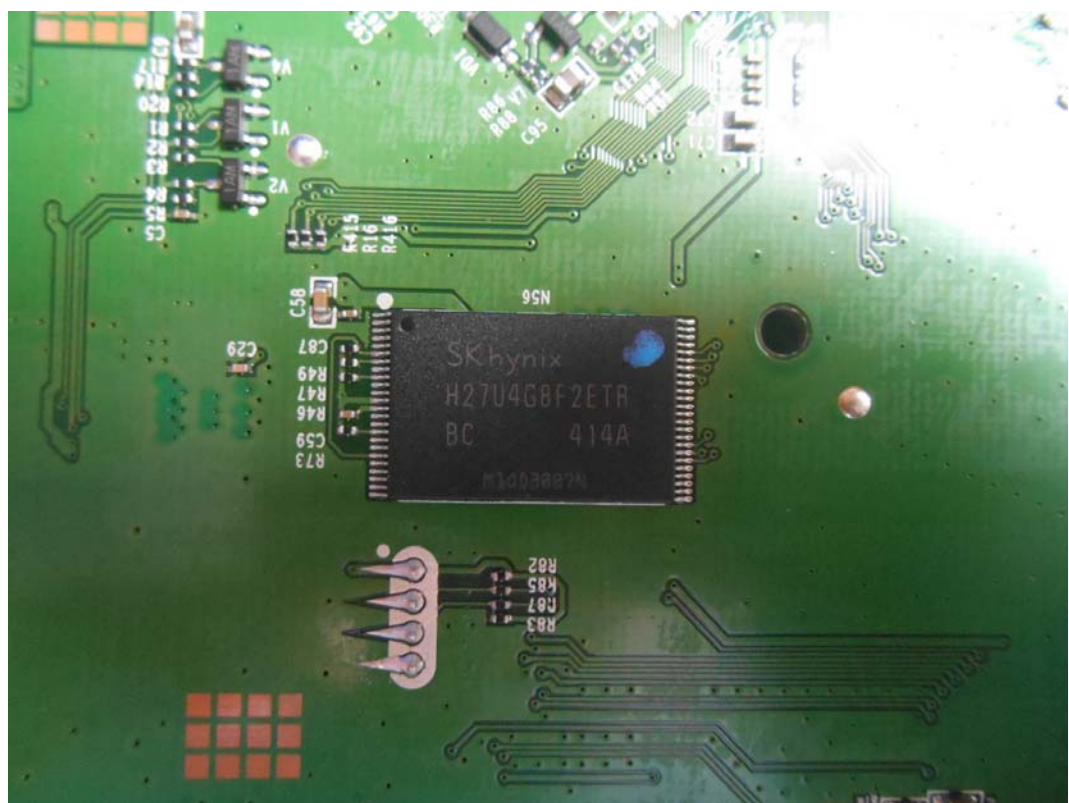


FIGURE 6
LED LCD TV (M/N: 40H5B)
TUNER

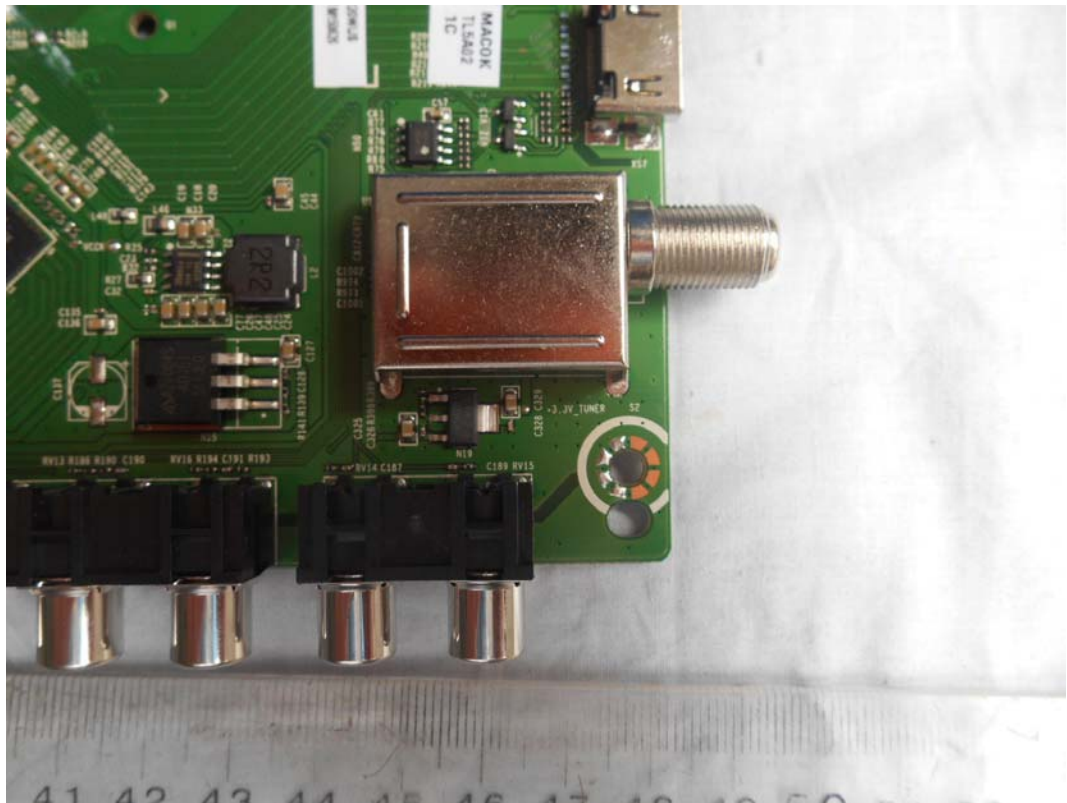
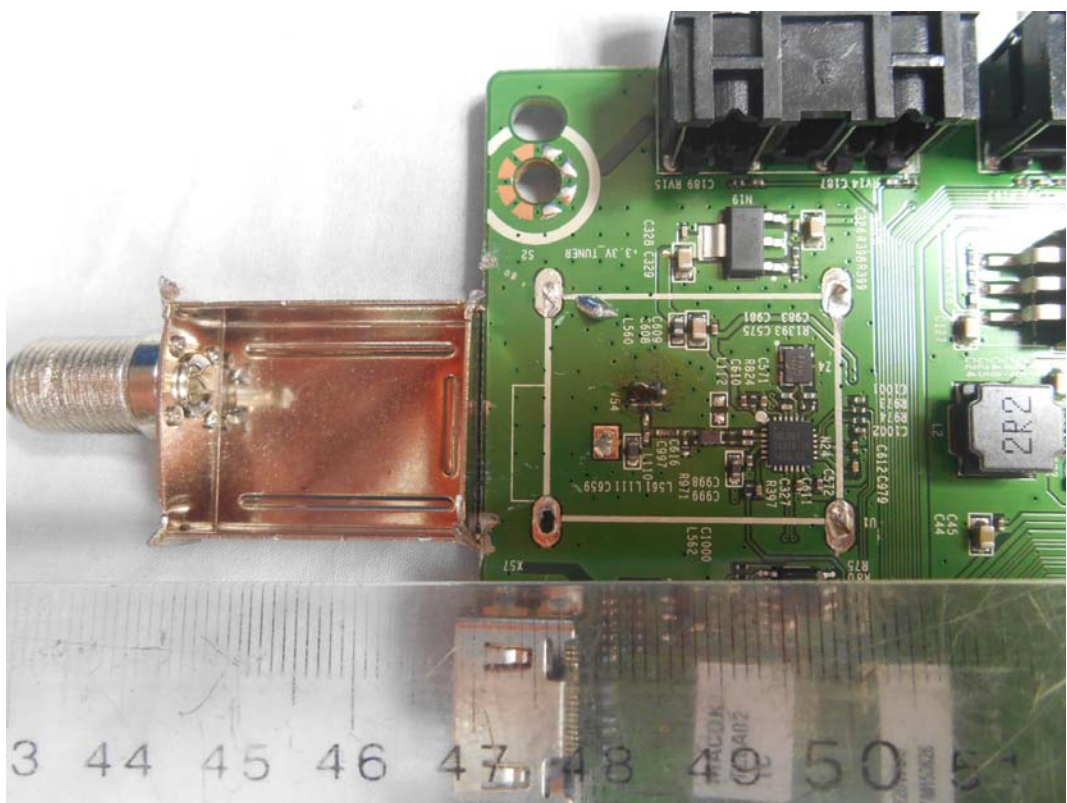


FIGURE 7
LED LCD TV (M/N: 40H5B)
TUNER COVER REMOVED



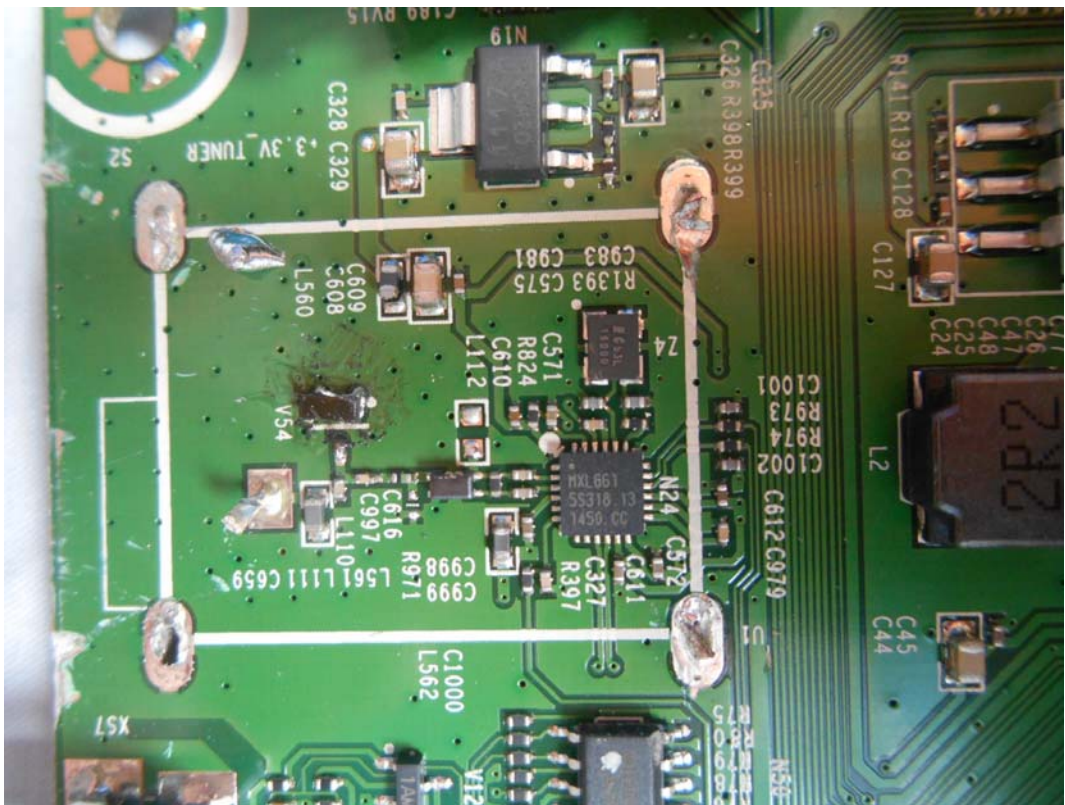


FIGURE 9
LED LCD TV (M/N: 40H5B)
RF BOARD



FIGURE 10
LED LCD TV (M/N: 40H5B)
RF BOARD COVER REMOVED



FIGURE 11
LED LCD TV (M/N: 40H5B)
CHIP AND CRYSTAL ON RF BOARD

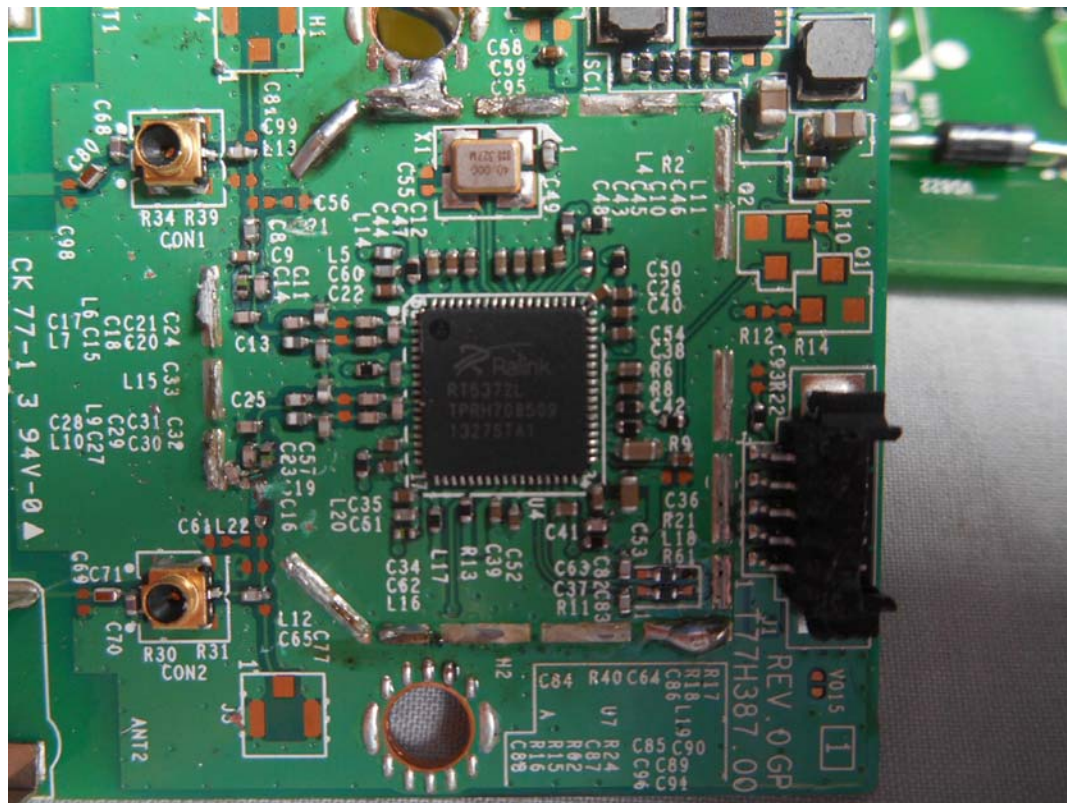


FIGURE 12
LED LCD TV (M/N: 40H5B)
PANEL BOARD (COMPONENT SIDE)



FIGURE 13
LED LCD TV (M/N: 40H5B)
PANEL BOARD (SOLDERED SIDE)

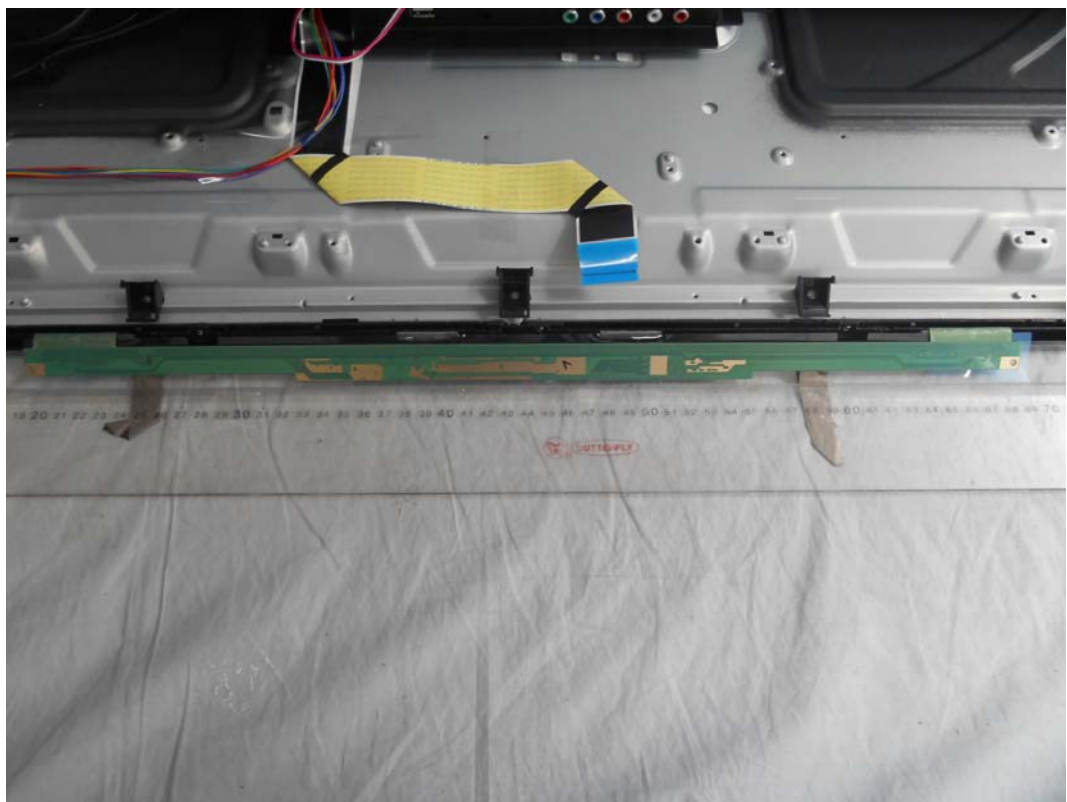


FIGURE 14
LED LCD TV (M/N: 40H5B)
KEY BOARD (COMPONENT SIDE)

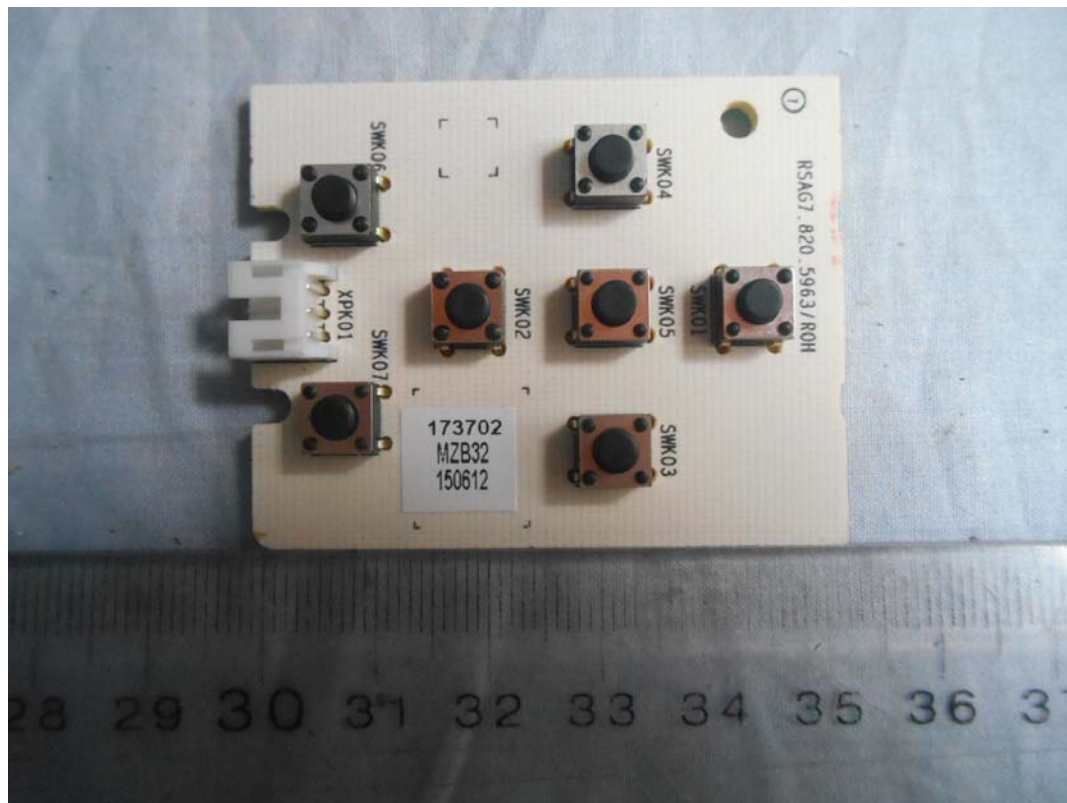


FIGURE 15
LED LCD TV (M/N: 40H5B)
KEY BOARD (COMPONENT SIDE)

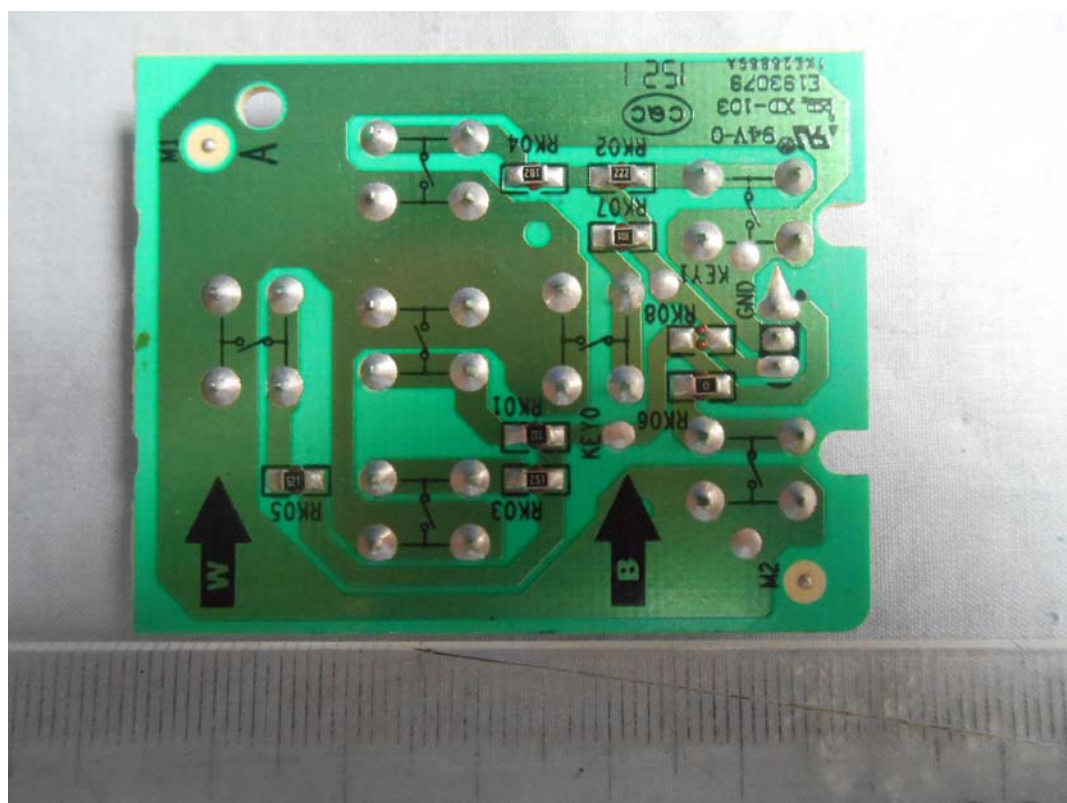


FIGURE 16
LED LCD TV (M/N: 40H5B)
IR BOARD (COMPONENT SIDE)

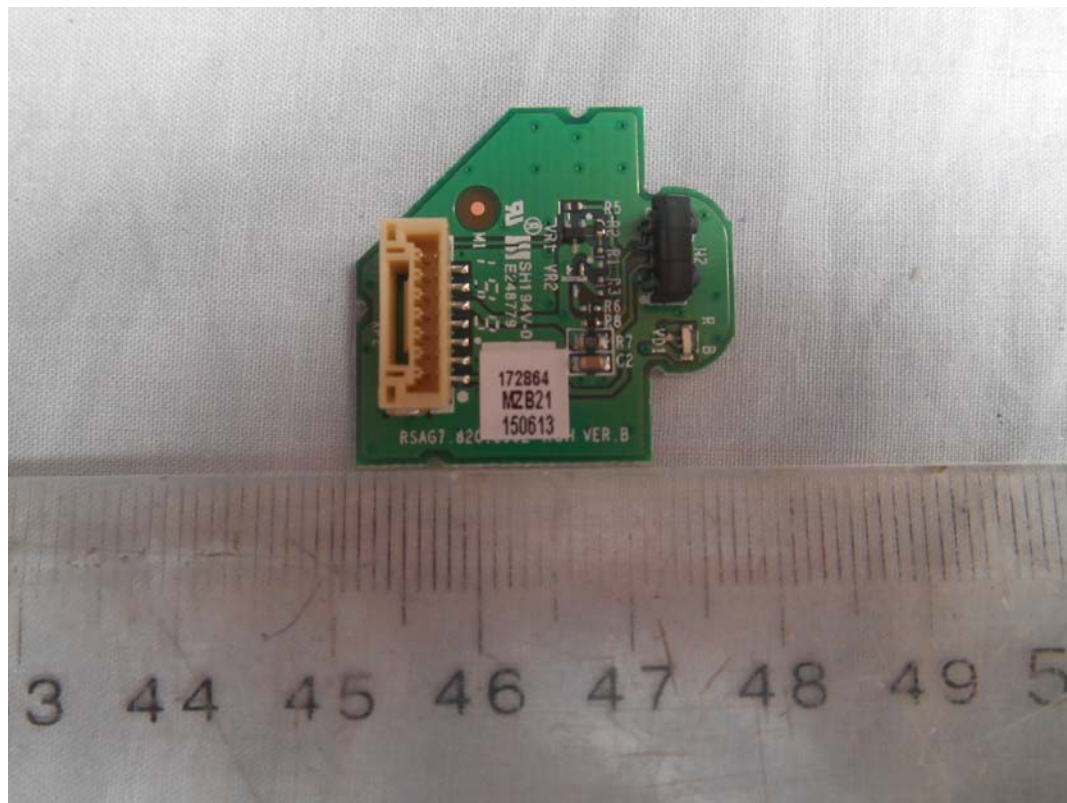


FIGURE 17
LED LCD TV (M/N: 40H5B)
IR BOARD (COMPONENT SIDE)



FIGURE 18
LED LCD TV (M/N: 40H5B)
SPEAKER

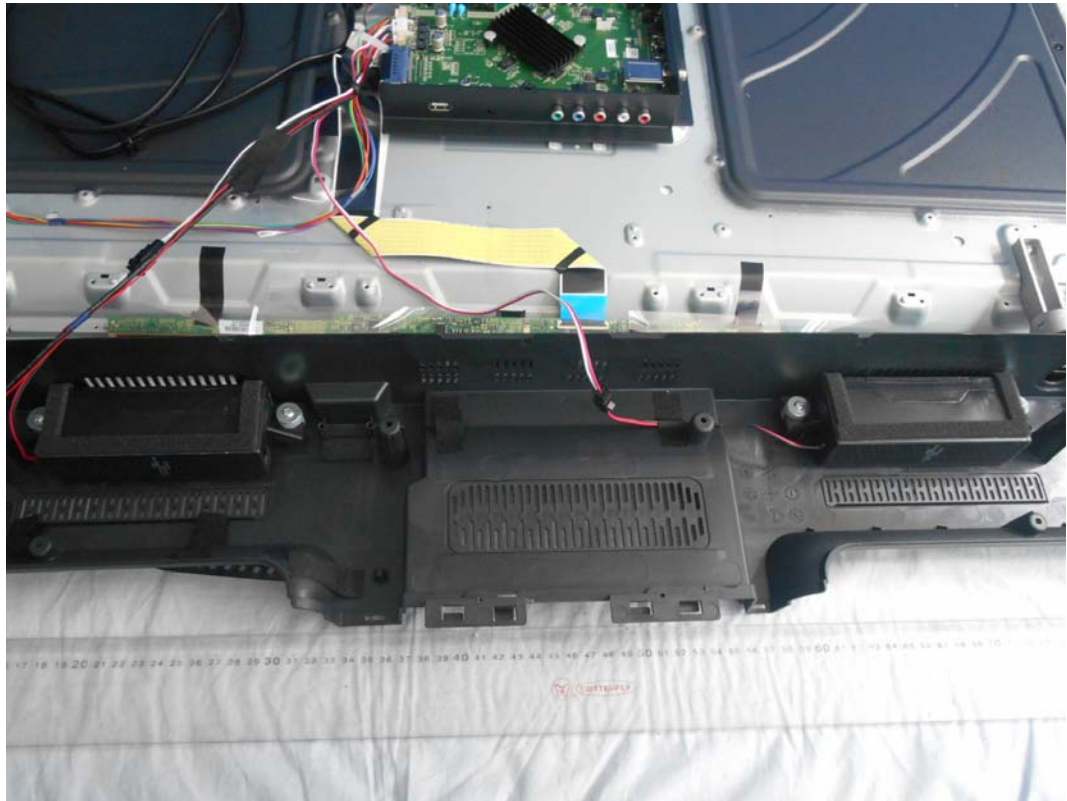


FIGURE 19
LED LCD TV (M/N: 40H5B)
DEBUG #1



FIGURE 20
LED LCD TV (M/N: 40H5B)
DEBUG #2

