

FIGURE 1
LED LCD TV (M/N: 40H5)
COVER REMOVED



FIGURE 2
LED LCD TV (M/N: 40H5)
LCD PANEL LABEL



FIGURE 3
LED LCD TV (M/N: 40H5)
POWER BOARD (COMPONENT SIDE)

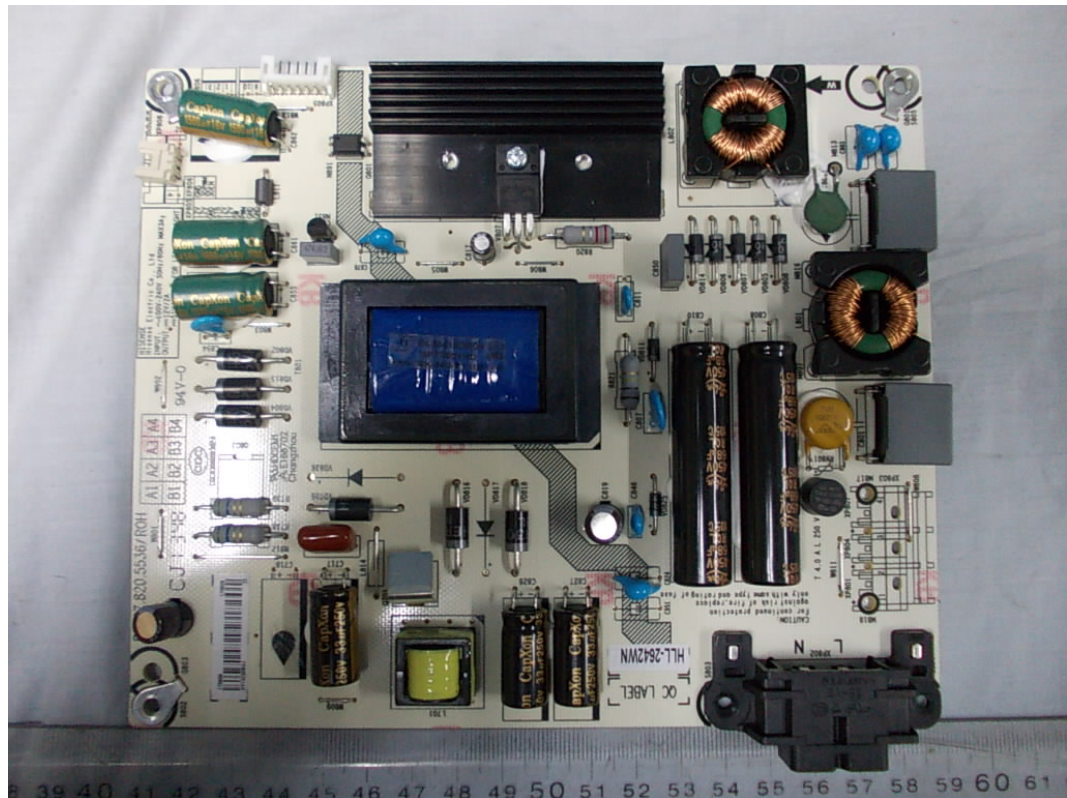


FIGURE 4
LED LCD TV (M/N: 40H5)
POWER BOARD (SOLDERED SIDE)

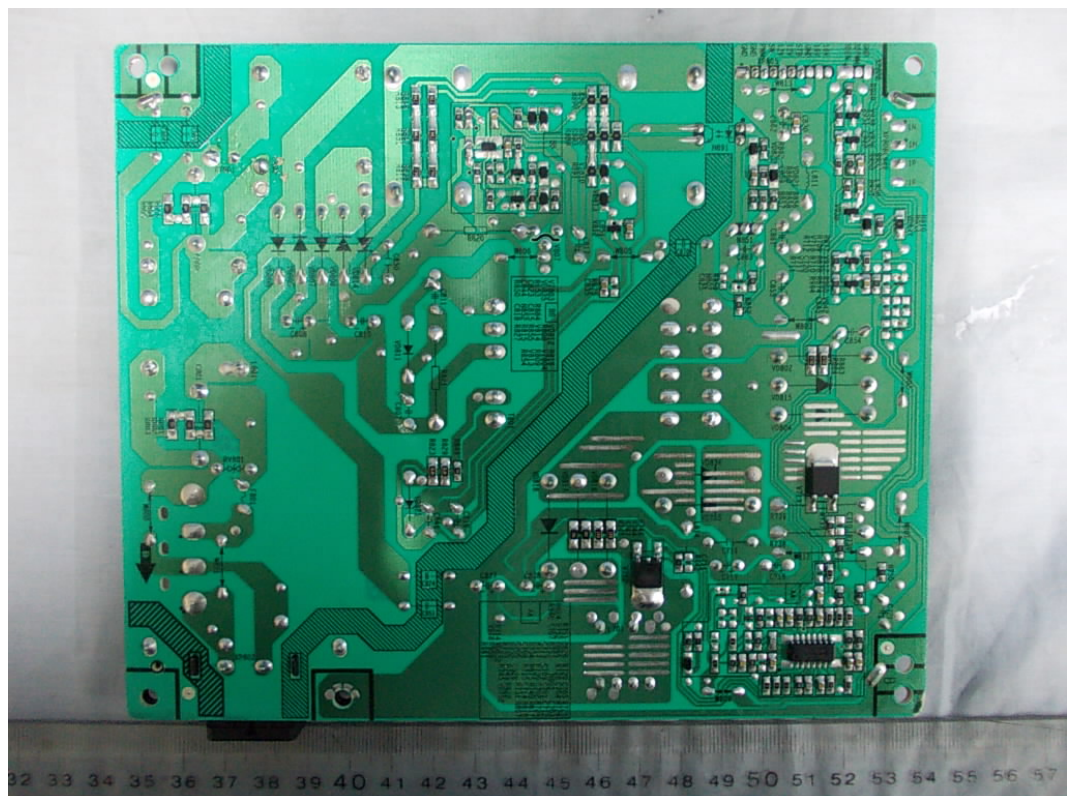


FIGURE 5
LED LCD TV (M/N: 40H5)
MAIN BOARD (COMPONENT SIDE)

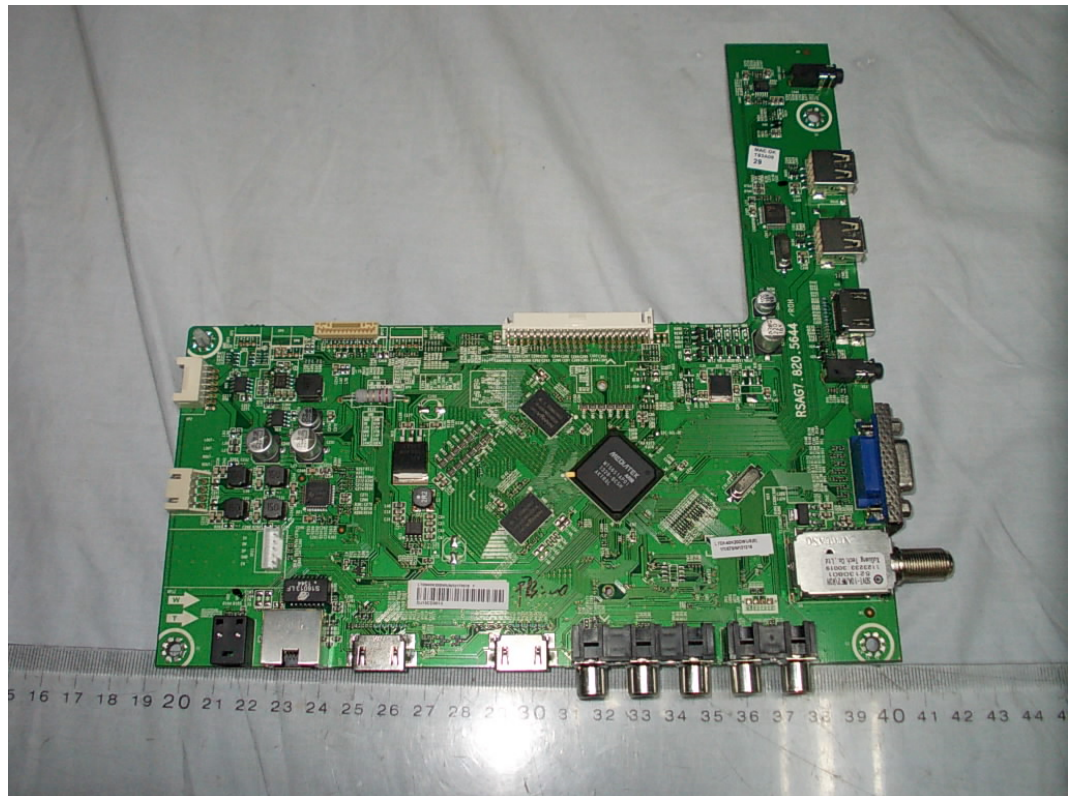


FIGURE 6
LED LCD TV (M/N: 40H5)
MAIN BOARD (SOLDERED SIDE)

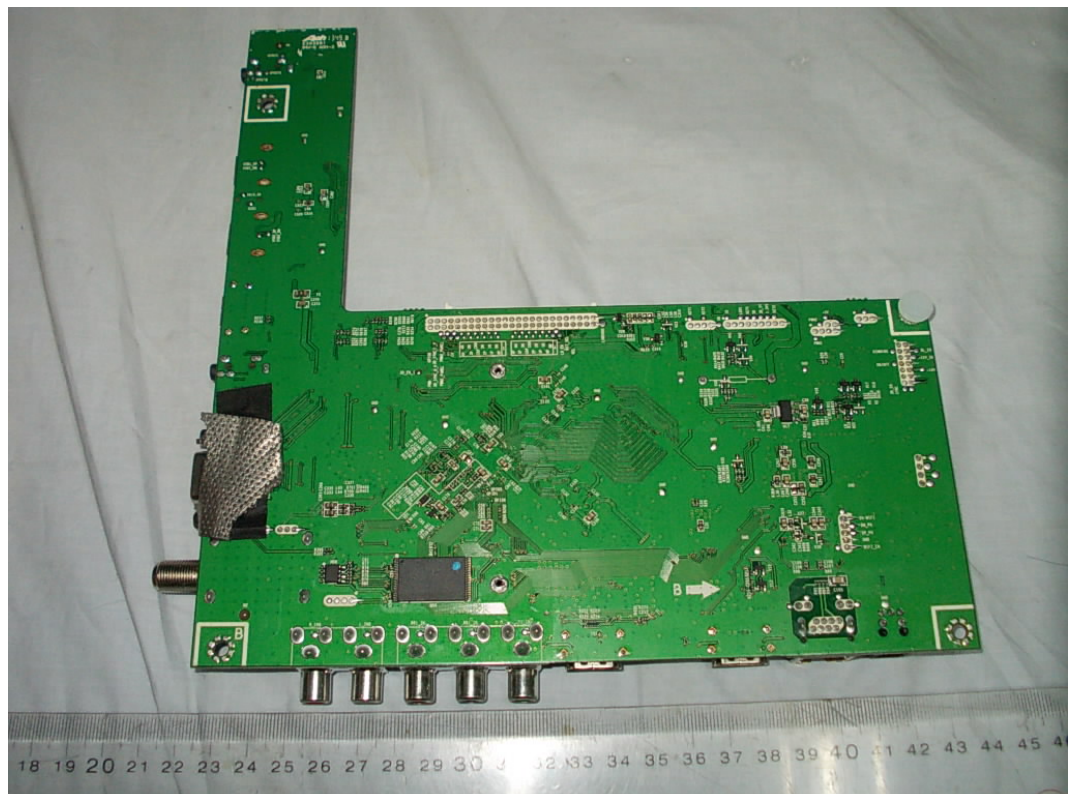


FIGURE 7
LED LCD TV (M/N: 40H5)
CRYSTAL ON MAIN BOARD

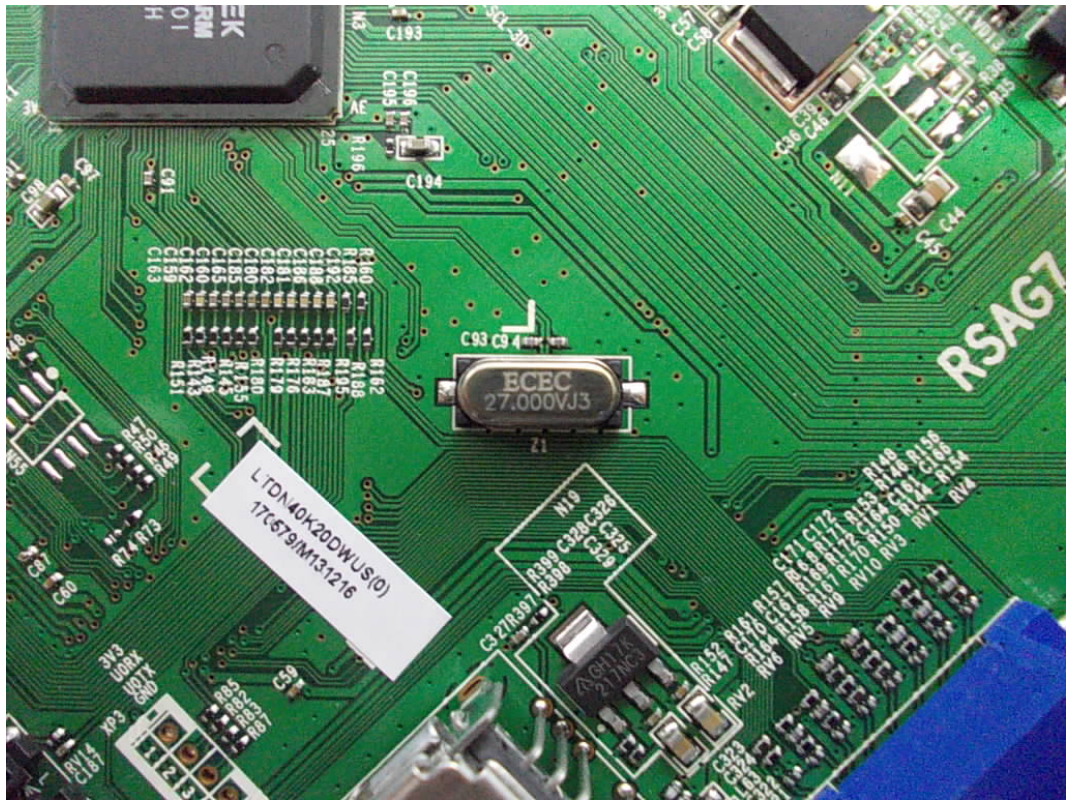


FIGURE 8
LED LCD TV (M/N: 40H5)
CHIP ON MAIN BOARD

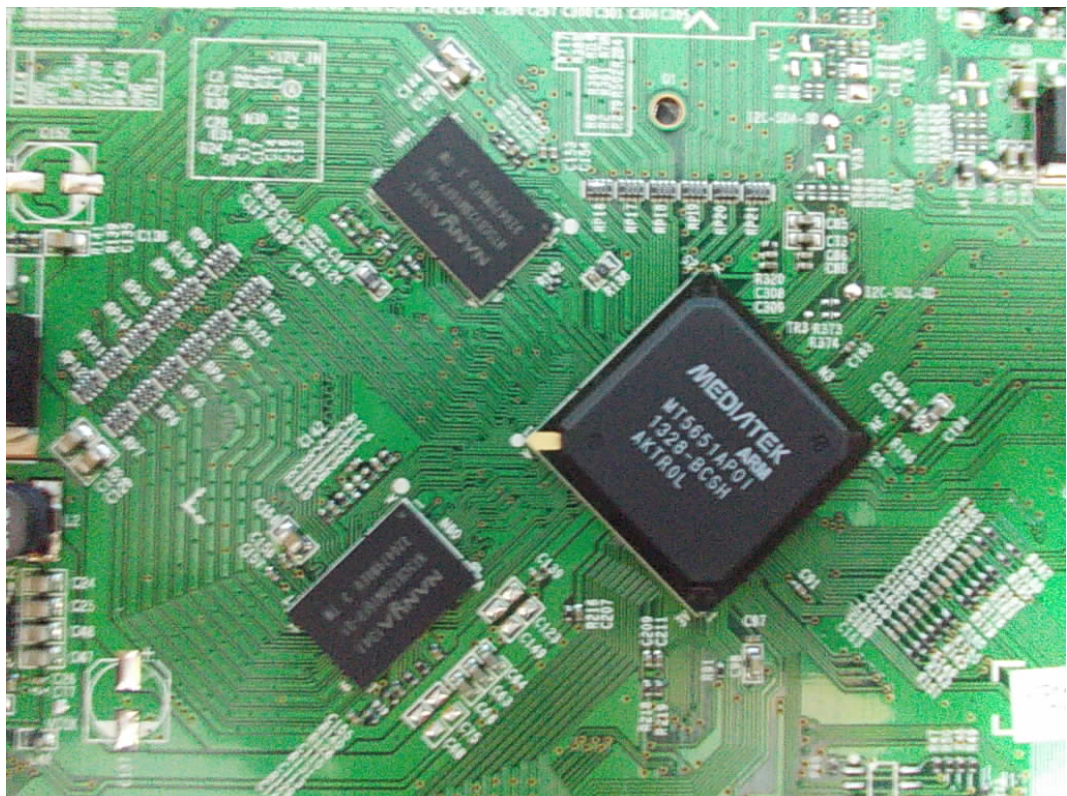


FIGURE 9
LED LCD TV (M/N: 40H5)
TUNER ON MAIN BOARD

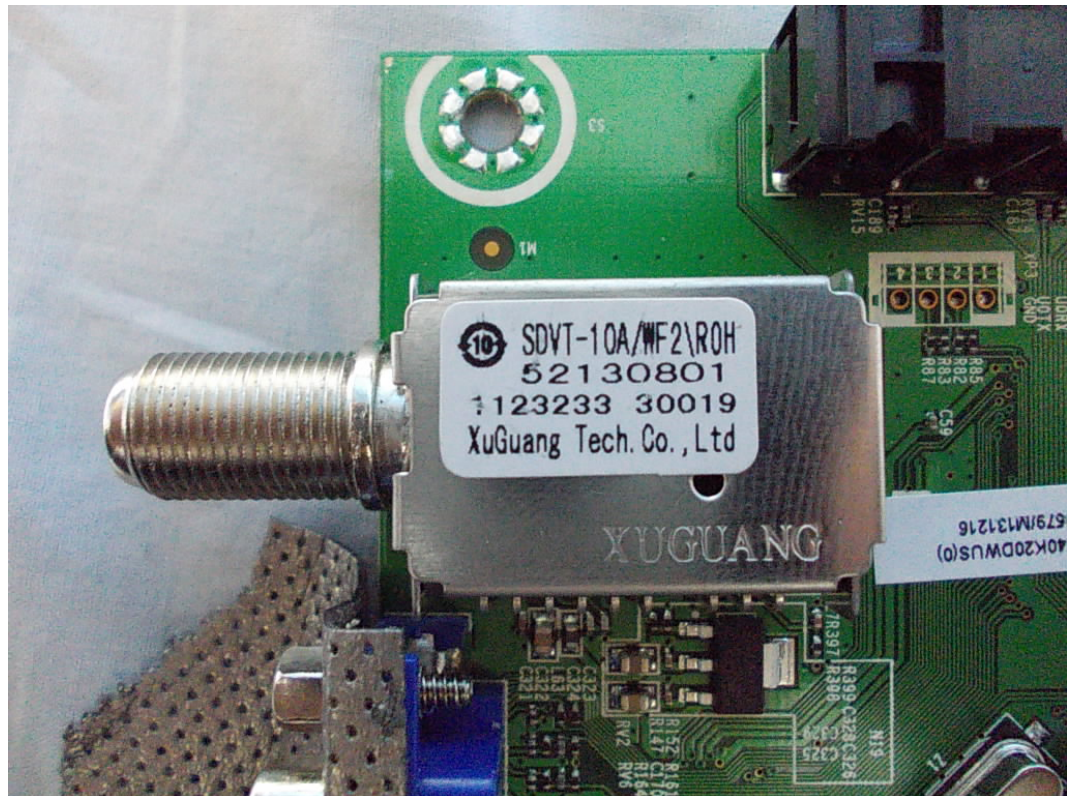


FIGURE 10
LED LCD TV (M/N: 40H5)
KEY BOARD (COMPONENT SIDE)

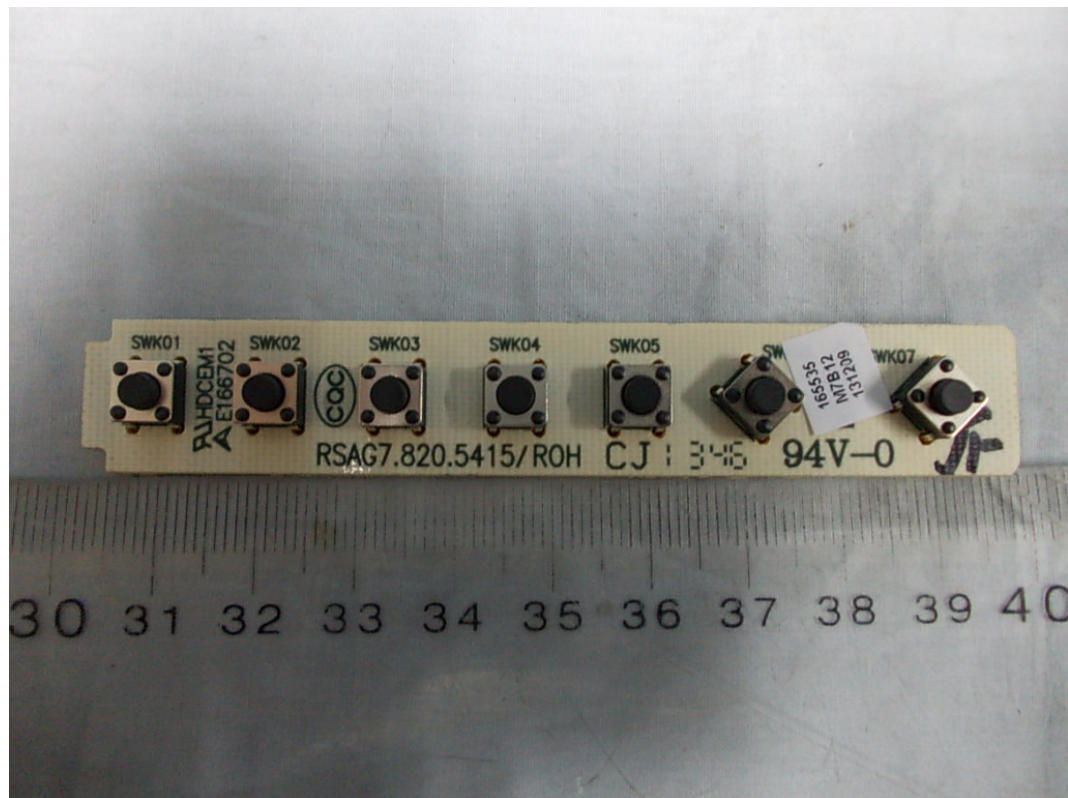


FIGURE 11
LED LCD TV (M/N: 40H5)
KEY BOARD (SOLDERED SIDE)

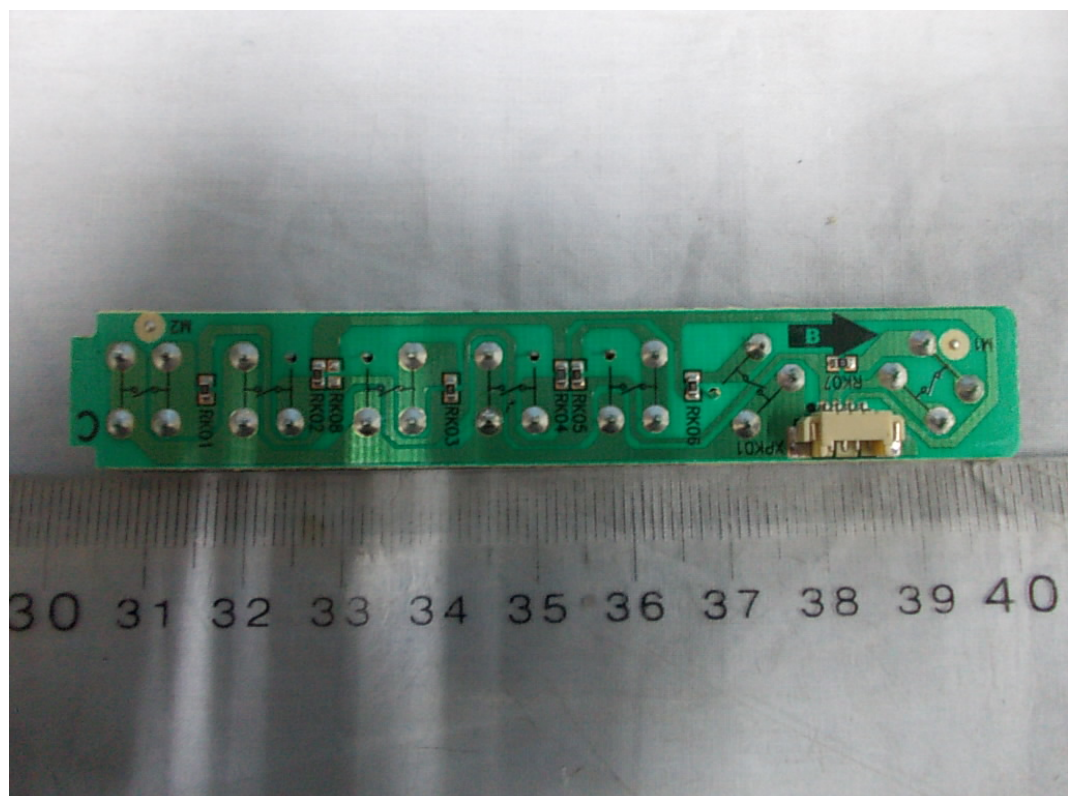


FIGURE 12
LED LCD TV (M/N: 40H5)
IR BOARD (COMPONENT SIDE)

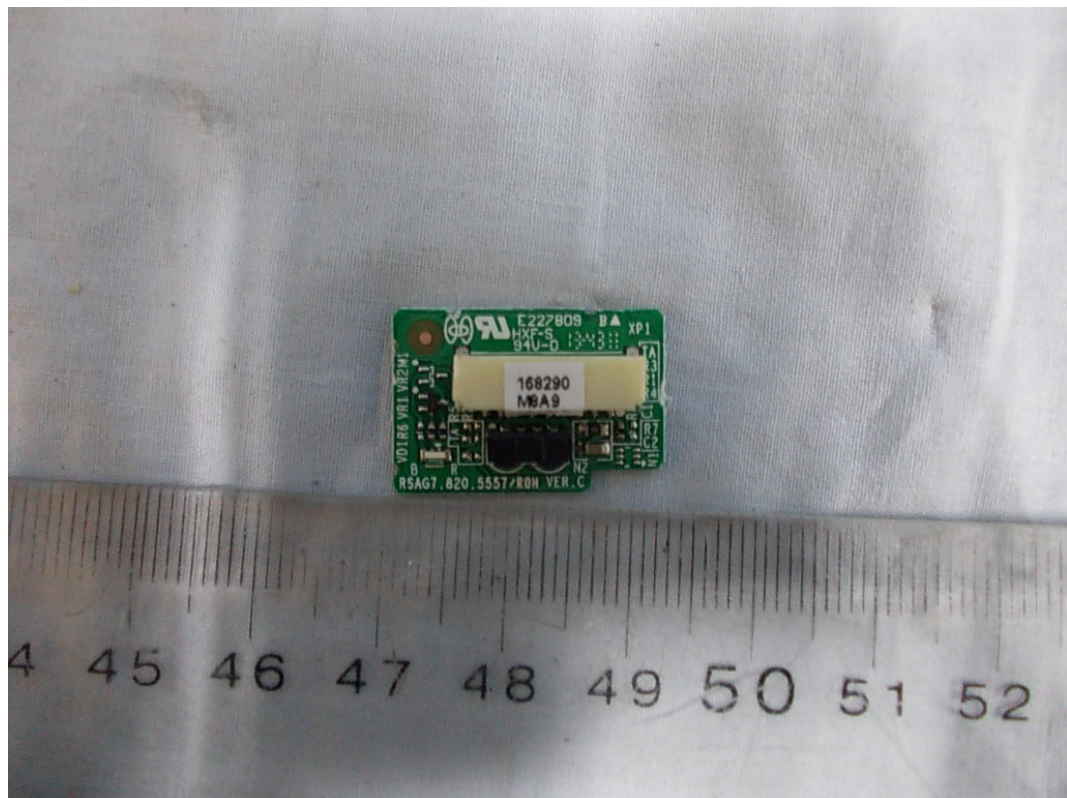


FIGURE 13
LED LCD TV (M/N: 40H5)
IR BOARD (SOLDERED SIDE)

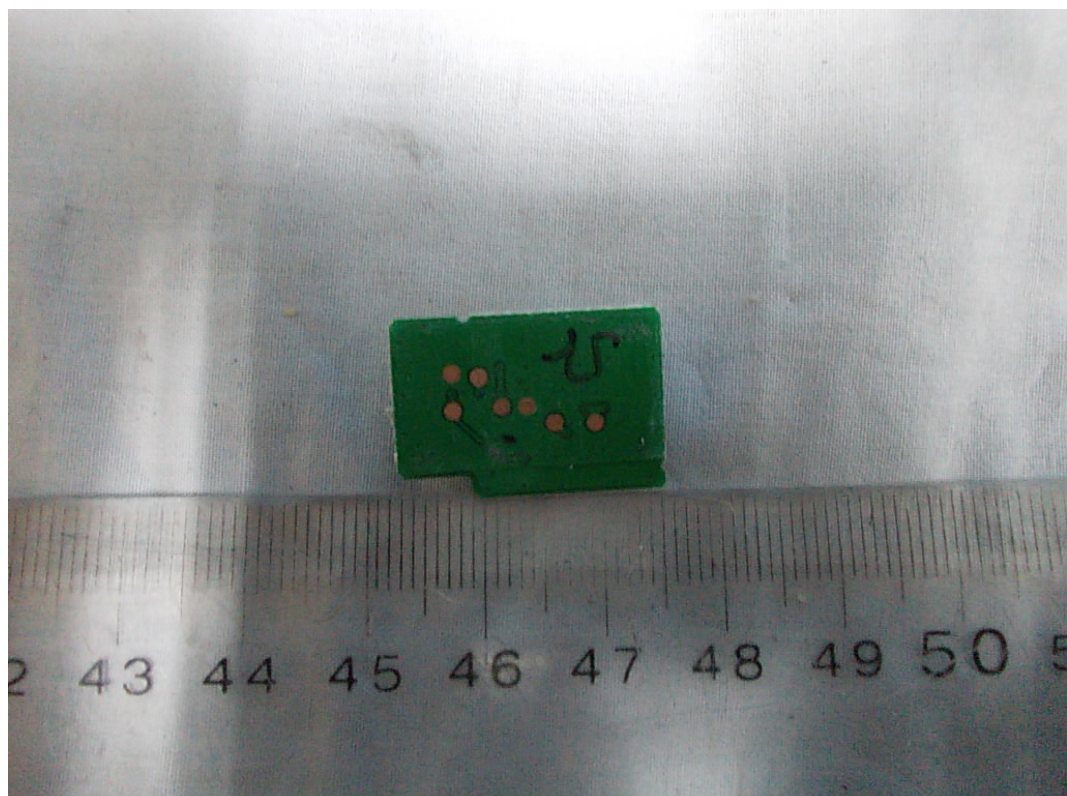


FIGURE 16
LED LCD TV (M/N: 40H5)
LABEL ON RF BOARD



FIGURE 17
LED LCD TV (M/N: 40H5)
DEBUG

