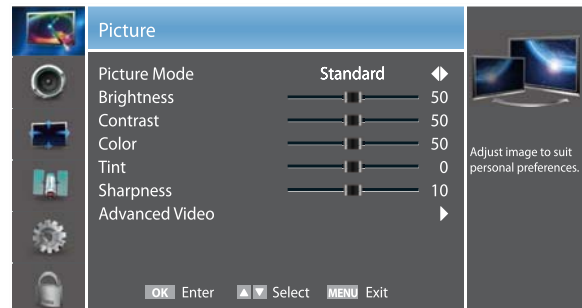


Basic Features

To Use the Menu

- 1 Press the [MENU] button to open the main menu.
- 2 Press [▲/▼] to select a menu option, then press [►/ENTER] to enter the menu.
- 3 In each menu, you can:
 - Press [▲/▼] to select an item,
 - Press [◀/▶] to adjust the value, or
 - Press [►/ENTER] to enter the submenu,
 - Press [RETURN] to exit the submenu.
- 4 Press [EXIT] button to exit the menu.



NOTE

FOR ILLUSTRATION ONLY.

Using the Picture Menu

You can adjust:

Picture Mode - Adjust the Picture Mode. You can select Standard, Theater, Energy Saving, Game, Custom or Vivid.

Brightness - Increase or decrease the brightness of the picture. Increasing the brightness can add more light to dark areas of the picture, while decreasing the brightness can add more darkness to light areas of the picture.

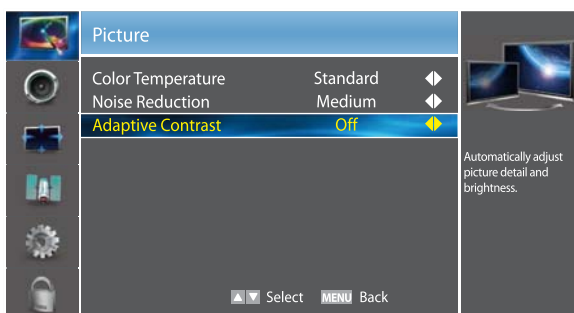
Contrast - Increase or decrease the contrast of the picture. Increase the contrast to adjust the white areas of the picture or decrease the contrast to adjust the black areas of the picture.

Color - Adjust the level of color in the picture.

Tint - Adjust flesh tones so they appear natural.

Sharpness - You can increase the sharpness level for clearer images or decrease the sharpness level for smoother images.

Advanced Video - Access advanced video settings such as Color Temperature, Noise Reduction and Adaptive Contrast.

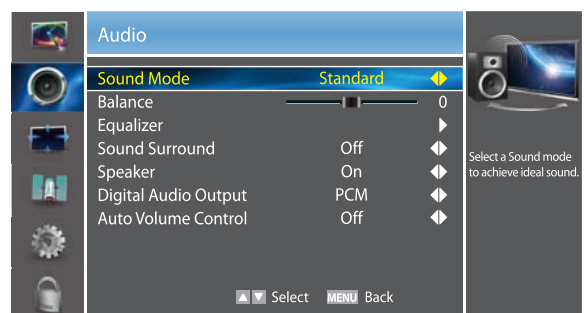


Color Temperature: Change the color temperature. You can select a preset color temperature: Cool, Standard and Warm.

Noise Reduction: Optimize the picture quality by filtering signal interference. You can select Off, Low, Medium or High.

Adaptive Contrast: Automatically adjusts the contrast level of the selected input source.

Using the Audio Menu



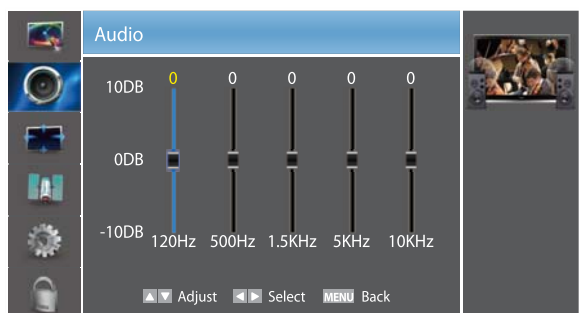
You can adjust:

Sound Mode - Select the Sound Mode: Standard, Speech, User or Music.

Balance - Adjust the volume of the left and right speakers.

Equalizer - Soften or enhance the sound at specific frequency points.

Basic Features



Sound Surround - Simulates surround sound and enhances bass response.

Speaker - You can select On (default setting) to play audio through TV speakers, or select Off to play audio through the speakers on an external audio system.

Digital Audio Output - Send digital audio to an external audio system. You can select PCM, RAW or Off.

PCM: PCM outputs two channel audio regardless of the input format.

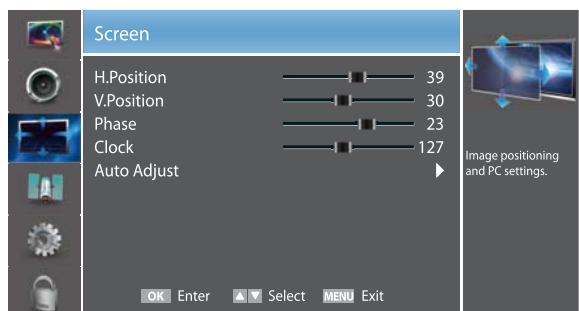
RAW: Passes through (output = input) the incoming audio signal without decoding. E.g. incoming Dolby Digital, DTS or PCM data stream is simply output as it is without any processing.

Auto Volume Control - Automatically adjusts volume to a consistent level; attenuates loud passages.

Using the Screen Menu

NOTE

Only available in VGA mode.



You can adjust:

H.Position - Move the image right or left.

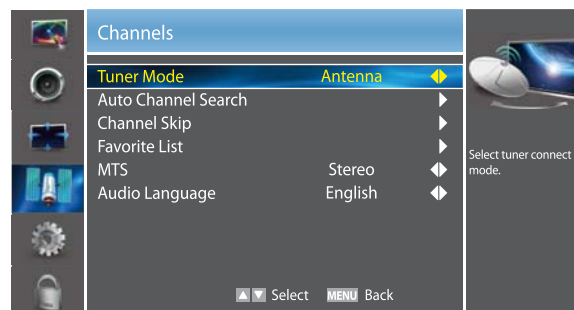
V.Position - Move the image up or down.

Phase - Adjust the focus of stable images.

Clock - Adjust the sample frequency.

Auto Adjust - Detects input signal clock, phase and position and adjusts TV display accordingly.

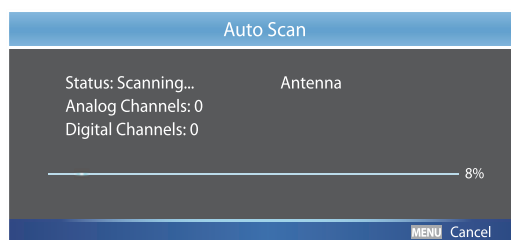
Using the Channels Menu



You can adjust:

Tuner Mode - Select TV source: Antenna or Cable.

Auto Channels Search - Scans for channels that have signals and stores the channels information in the channel list.



Channel Skip - You can cancel a channel stored in the channel list.

NOTE

When you press [CHA / V] button, your TV skips the channel you cancelled. You can still tune to the channel using the number buttons on the remote control.

Favorite List - Add or delete channels to create a favorite list. You can press [FAV] button to display your Favorite List.

MTS - Select the default audio stream: Mono, Stereo or SAP.

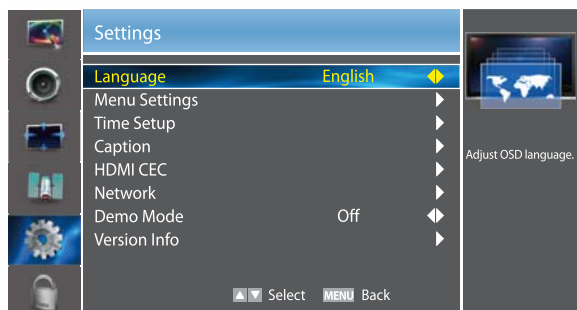
Audio Language - Select the audio language: English, Español or Français.

NOTE

Only available in TV mode.

Basic Features

Using the Settings Menu



You can adjust:

Language - You can select the menu's language to English, Español or Français.

Menu Settings - You can set On-screen menu system.

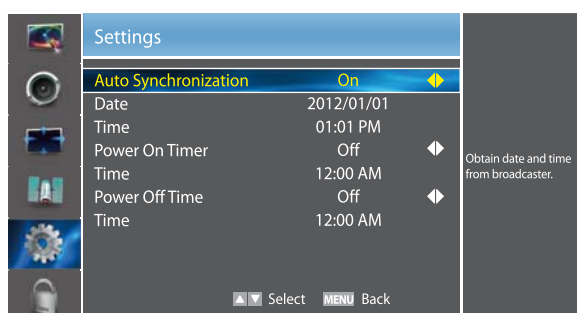
Timeout: Select the display time of the menu: 10-20-...-60 seconds.

Time Setup - Set the time zone, daylight saving, time and sleep timer.

Time Zone: Select your local time zone: Eastern Time, Indiana, Central Time, Mountain Time, Arizona, Pacific Time, Alaska or Hawaii.

Daylight Saving: Set the Daylight Saving time for your area.

Time: You can set time manually or select automatic if the TV is connected to an antenna or cable source.



- **Auto Synchronization:** Select "On" for automatic date and time setting using information from broadcast stations in your area.
- **Date/Time:** Set the current year/month/day/time.
- **Power On Timer:** When "On", you can set the time when the TV turns on automatically.
- **Time:** Set the desired time for the TV to turn on automatically.

- **Power Off Timer:** When "On", you can set the time when the TV turns off automatically.

- **Time:** Set the desired time for the TV to turn off automatically.

Sleep Timer: Specify the amount of time before your TV automatically turns off: Off -10-...-120 minutes.

Caption - Adjust Closed Captioning settings.

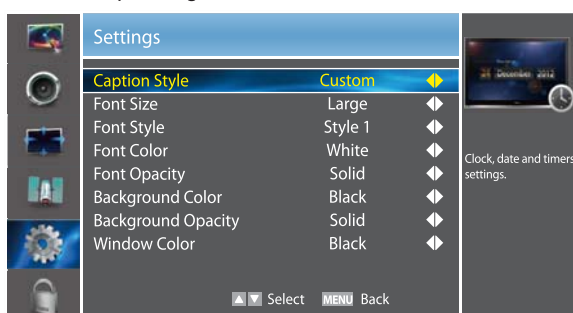
Caption Control: Select the Closed Caption mode: CC Off, CC On or CC On When Mute.

Analog Closed Caption: Select an Analog Caption setting:

- **CC1~CC4:** Closed captioning appears in a small banner across the bottom of the screen. CC1 is usually the "printed" version of the audio. CC2~CC4 display content are provided by the broadcaster.
- **Text1~Text4:** Closed captioning that covers half or all of the screen. Text1~Text4 display content are provided by the broadcaster.
- **Off:** To turn off the Analog Caption.

Digital Closed Caption: Select a Digital Caption setting: Service1~Service6 or Off.

Digital Caption Style: Customize the look of digital Closed Captioning.



- **Caption Style:** Set the look of Digital CC. "As Broadcaster" uses broadcaster's style.
- **Font Size/Style/Color/Opacity:** Select the size/style/color/opacity level of font.
- **Background Color/Opacity:** Select the color/opacity level of the background.
- **Window Color:** Select the color of the window.

HDMI CEC - HDMI CEC lets you control HDMI CEC - compatible devices connected to the HDMI jacks on your TV using the remote control that came with your TV.

Basic Features

NOTES

- HDMI cables must be used to connect HDMI CEC - compatible devices to your TV.
- The connected device's HDMI CEC feature must be turned on.
- If you connect an HDMI device that is not HDMI CEC - compatible, all the HDMI CEC Control features do not work.
- Depending on the connected HDMI device, the HDMI CEC Control feature may not work.

Playback Device 2: You can manual set your playback device in Standby or Power On.

Setup: You can set HDMI CEC function.

- **CEC Function:** Turning HDMI CEC function on or off.
- **Auto Turn Off:** When HDMI CEC is turned on, this function turns off HDMI CEC devices when you turn off your TV.
- **TV Auto On:** When HDMI CEC is turned on and you turn on an HDMI CEC device, this function turns on your TV automatically.
- **Device Discovery:** You can display a list of HDMI CEC devices that are connected to your TV.

Network - You can setup the network configuration in this menu. For more information, see "Network Connection" and "Network Setup".

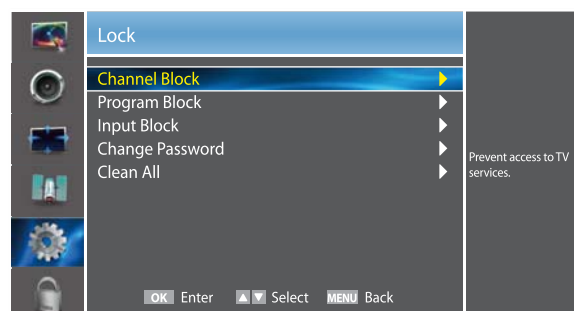
Demo Mode - Displays a banner at the bottom of the screen which describes the key features of the TV.

Version Info - Display the software version information. You may need to reference this information when contacting Customer Care or upgrading the firmware online.

Reset Default - Restores the TV configuration to factory settings. You will need to complete the setup for such things as Tuner/Channel settings, Network connection, Date/Time and other user preferences.

Using the Lock Menu

When you first use this function, the default password is [0000]. Once you input this password, you can set options.



You can adjust:

Channel Block - Block selected Channels on the TV.

Program Block - Block selected Programs on the TV.

Rating Enable: Block or unblock TV ratings.

U.S. TV Ratings: Restrict TV programs by USA Ratings.

U.S. Movie Ratings: Restrict movie by USA Ratings.

Canadian English/French Ratings: Restrict movie and TV programs by Canadian Ratings.

Open V-Chip: Display an advanced V-Chip ratings table for digital channels (USA only).

Block Unrated: Block unrated TV programs.

Input Block - Block selected Input source on the TV.

Change Password - If you want to change the default password, first enter the new password then enter the same password again.

Clean All - You can reset all locks to factory mode.

Basic Features

Following is the description of these ratings.

U.S. Movie Ratings

Rating	Defined as
G	General audience
PG	Parental Guidance suggested
PG-13	Parents strongly cautioned
R	Restricted
NC-17	No one 17 and under admitted
X	Adult audience only

U.S. TV Ratings

Age	Defined as
TV-Y	All children
TV-Y7	Directed to older children
TV-G	General audience
TV-PG	Parental Guidance suggested
TV-14	Parents Strongly cautioned
TV-MA	Mature Audience only

Contents	Defined as
A	All of the ratings below that rating set blocked automatically
D	Suggestive dialogue
L	Strong language
S	Sexual situations
V	Violence
FV	Fantasy Violence

Canadian English Ratings

Rating	Description
C	Children
C8+	Children 8 years and older
G	General Programming, suitable for all audiences
PG	Parents Guidance
14+	Viewers 14 years and older
18+	Adult Programming

Canadian French Ratings

Rating	Description
G	General
8 ans+	8+General; Not recommended for young children
13 ans+	Programming may not be suitable for children under the age of 13
16 ans+	Programming is not be suitable for children under the age of 16
18 ans+	Programming restricted to adults

Advanced Features

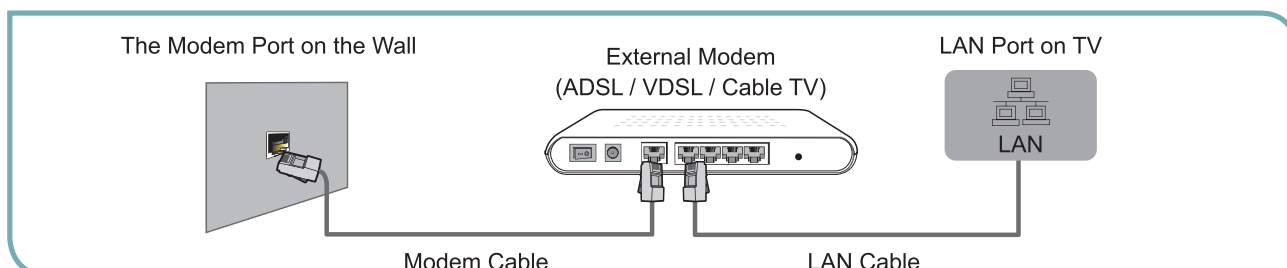
Network Connection

You can set up your TV so that it can access the Internet through your local area network (LAN) with a Ethernet or wireless connection.

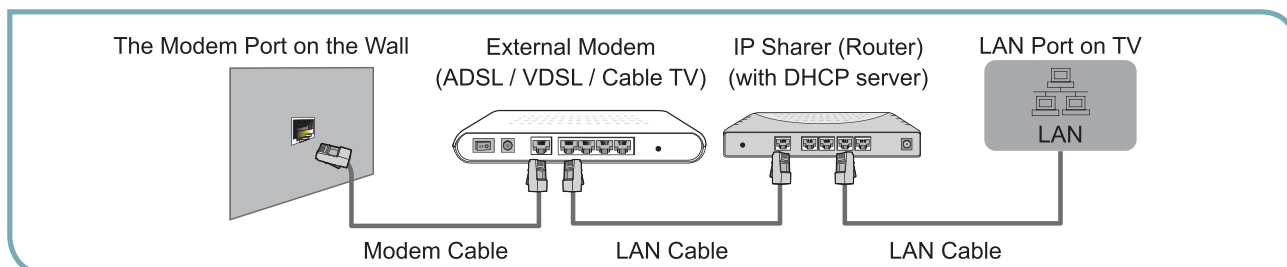
✚ Connecting to a Wired Network

You can attach your TV to your LAN by one of the three following ways:

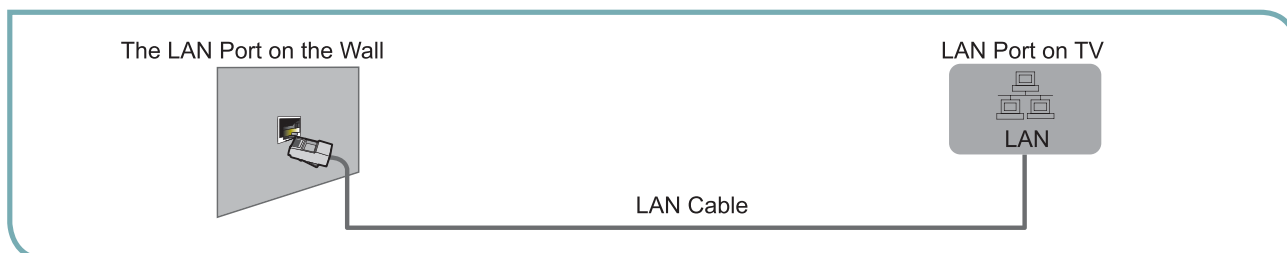
- You can attach your TV to your LAN by connecting the LAN port on the back of your TV to an external modem using a Cat 5 LAN cable. See the diagram below.



- You can attach your TV to your LAN by connecting the LAN port on the back of your TV to an IP Sharer which is connected to an external modem. Use LAN cable for the connection. See the diagram below.



- Depending on how your network is configured, you may be able to attach your TV to your LAN by connecting the LAN port on the back of your TV directly to a network wall outlet with a Cat 5 cable. See the diagram below. Note that the wall outlet is attached to a modem or router elsewhere in your house.



If you have a Dynamic Network, you should use an ADSL modem or router that supports Dynamic Host Configuration Protocol (DHCP). Modems and routers that support DHCP automatically provide the IP address, subnet mask, gateway, and DNS, so you don't have to enter them manually. Most home networks are Dynamic Networks.

Some networks require a Static IP address. If your network requires a Static IP address, you must enter the IP address, subnet mask, gateway, and DNS values manually on your TV's Cable Setup Screen when you set up the network connection. To get the IP address, subnet mask, gateway, and DNS values, contact your Internet Service Provider (ISP).

If you have a Windows computer, you can also get these values through your computer.

NOTE

You can use ADSL modems that support DHCP if your network requires a Static IP address. ADSL modems that support DHCP also let you use Static IP addresses.

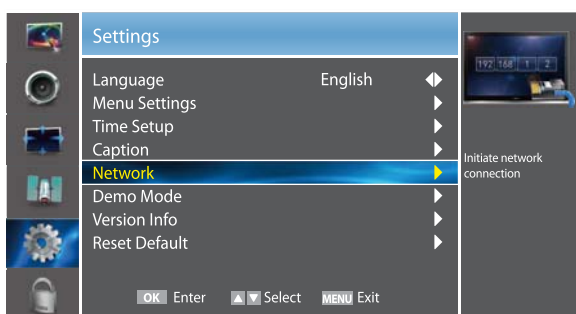
Advanced Features

❏ Network Setup (Auto)

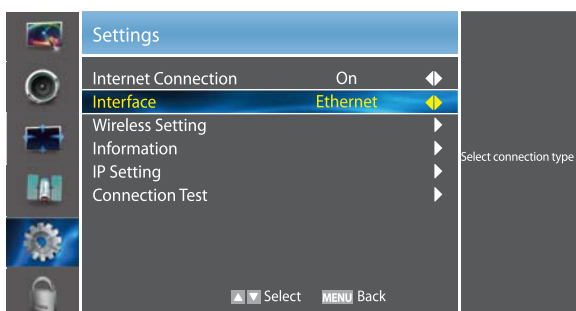
Use the Automatic Network Setup while your connecting the TV to a network that supports DHCP. To set up your TV's cable network connection automatically, follow these steps:

● How to set up automatically

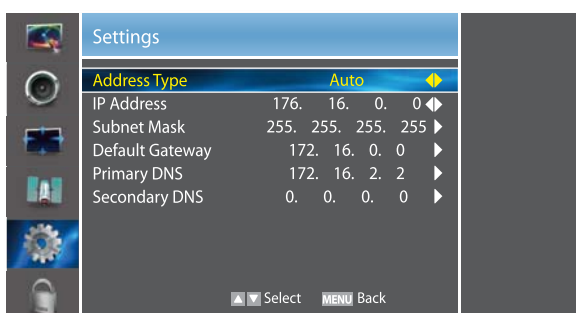
1. Connect your TV to your LAN as described in the previous section.
2. Turn on your TV, operate according to the description in the Settings menu until the Network screen appears.



3. On the Network screen, select Configuration and press [ENTER] button to enter the submenu.



4. Set Internet Connection to On and Interface to Ethernet.
5. Select IP Setting and press [ENTER] button to enter it.



6. Set Address Type to Auto.
7. Auto acquires and enters the necessary connection values automatically.
8. If the connection values are not automatically entered, please check your modem and router manuals for directions to enable automatic IP addressing by DHCP. Or, follow the steps listed to manually configure the network connection.

❏ Network Setup (Manual)

Use the Automatic Network Setup when connecting your TV to a network that requires a Static IP address.

● Getting the Network Connection Values

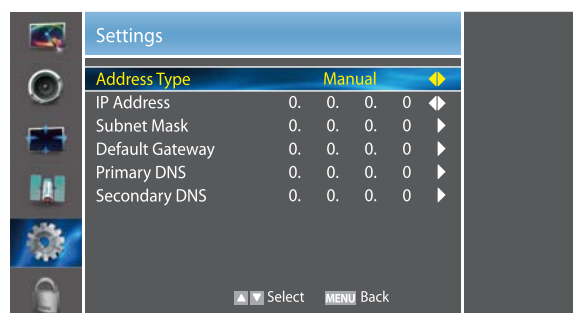
To get the network connection values on most windows computers, follow these steps:

1. Right click the Network icon on the bottom right of the screen.
2. In the pop-up menu that appears, click Status.
3. On the dialog that appears, click the Support tab.
4. On the Support tab, click the Details button. The network connection values are displayed.

● How to set up manually

To set up your TV's network connection manually, follow these steps:

1. Follow Steps 1 through 5 in the "How to set up automatically" procedure.
2. Set Address Type to Manual.

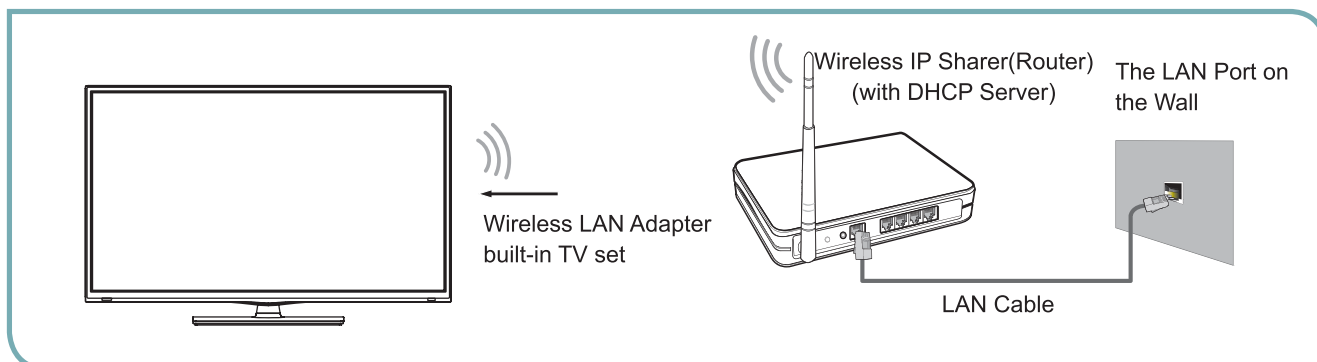


3. Press [▲/▼] button to select IP Address and press [◀/▶] button to move the cursor to the entry field. Then press 0~9 buttons to enter the numbers.
4. Press [MENU] button to exit IP Address and press [▲/▼] button to select the next options to enter the numbers.
5. When done, press [MENU] button to return to the previous menu.
6. Select Connection Test to check the internet connectivity.

Advanced Features

✚ Connecting to a Wireless Network

To connect your TV to your network wirelessly, you need a wireless router or modem. See the illustration below.



Hisense's built-in Wireless LAN Adapter supports the IEEE 802.11 b/g/n communication protocols. Hisense recommends using IEEE 802.11n router. When you play the video over a IEEE 802.11b/g connection, the video may not play smoothly.

✚ NOTES

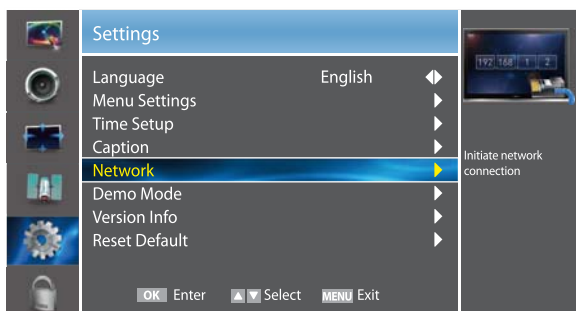
- You must use the Hisense's built-in Wireless LAN Adapter to use a wireless network, the set doesn't support external USB network adapter.
- To use a wireless network, your TV must be connected to a wireless IP sharer. If the wireless IP sharer supports DHCP, your TV can use a DHCP or static IP address to connect to the wireless network.
- Select a channel for the wireless IP sharer that is not currently being used. If the channel set for the wireless IP sharer is currently being used by another device nearby, this will result in interference and communication failure.
- If you apply a security system other than the systems listed below, it will not work with the TV.
- If Pure High-throughput (Greenfield) 802.11N mode is selected and the Encryption type is set to WEP, TKIP or TKIP-AES (WPS2 Mixed) for your Access Point (AP), Hisense TVs will not support a connection in compliance with new Wi-Fi certification specifications.
- If your AP supports WPS (Wi-Fi Protected Setup), you can connect to the network via PBC (Push Button Configuration) or PIN (Personal Identification Number). WPS will automatically configure the SSID and WPA key in either mode.
- Connection Methods: You can setup the wireless network connection three ways.
 - Scan
 - Manual
 - Auto

Advanced Features

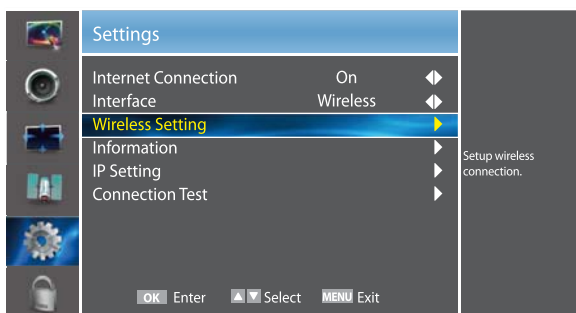
❏ Wireless Setting

● How to set up

1. Turn on your TV, operate according to the description in the Settings menu until the Network screen appears.



2. On the Network screen, select Configuration and press [ENTER] button to enter the submenu.



3. Set Internet Connection to On and Interface to Wireless.
4. Select Wireless Setting and press [ENTER] button to enter it.
You can select: Scan / Manual / Auto.
5. If you select Scan, a screen will appear listing all of the wireless networks within range of the TV. Use the [▲/▼] button to select the wireless network with your router SSID and press [ENTER] to confirm. Proceed to Step 7.
6. If you select Manual, a screen will appear prompting you to enter the SSID of your wireless network. Press [ENTER] and an on-screen keyboard will pop up. Enter the SSID and select OK. Press [ENTER] to confirm and a screen will appear prompting you select the security mode for your wireless network. Use the [▲/▼] button to select the proper security mode and press [ENTER] to confirm. If you selected None for the security mode, proceed to step 9.
7. A screen will appear prompting you to enter the password for the selected security mode. Press [ENTER] and an on-screen keyboard will pop up. Enter the password and select OK. Press [ENTER] to confirm. Proceed to Step 9.
8. If you select Auto, a screen will appear prompting you to select PIN (personal identification number) or PBC (push button configuration) setup. Choose the method supported by your wireless access point.

- If you choose PIN, an identification number will appear on the screen for you to enter into the access point. After entering the PIN, press the [▶] button. If the PIN is in use by another device, select [REFRESH] to obtain a new PIN and enter it into the access point. After entering the PIN, press the [▶] button.

- If you choose PBC, a screen will appear prompting to press [▶] button. After pressing the [▶] button you have two minutes to locate and press the Push Button on your access point to connect to the TV.

9. Press the [MENU] button to return to the previous menu.

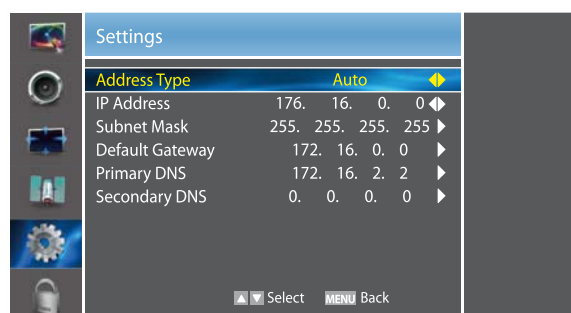
10. Select Connection Test to check the Internet connectivity.

DLNA Settings

Computer, TV and other digital devices can be connected via DLNA and they can share files with each other. You can use the TV set as a DLNA DMP (Digital Media Player) device to enjoy movies, pictures, music and other multimedia materials in your computer through DLNA connection. DLNA Setting needs to be set on TV and computer Respectively.

❏ Network Setup

1. Turn on your TV, operate according to the description in the Settings menu until the Network screen appears.
2. On the Network screen, select Configuration and press [ENTER] button to enter the submenu.
3. Set Internet Connection to On and Interface to Ethernet.
4. Select IP Setting and press [ENTER] button to enter it.
5. Set Address Type to Auto.

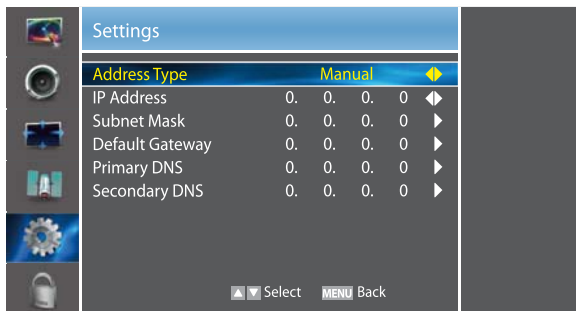


6. Auto acquires and enters the necessary connection values automatically.
7. If the connection values are not automatically entered, please check your modem and router manuals for directions to enable automatic IP addressing by DHCP. Or, follow the steps below to manually configure the network connection.

Advanced Features

To set up your TV's network connection manually, follow these steps:

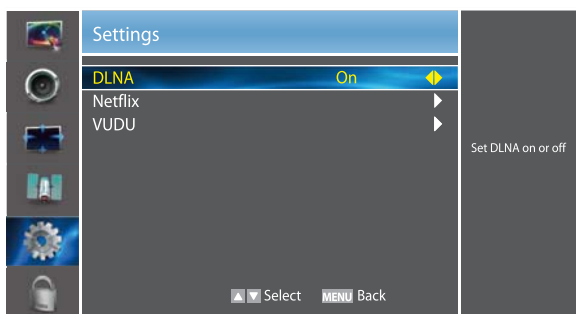
- Follow Steps 1 through 5 in the “How to set up automatically” procedure.
- Set Address Type to Manual.



8. Set Address Type to Manual, enter IP Setting. Then press [▲/▼] button to select IP Address and press [◀/▶] button to move the cursor to the entry field. Then press 0~9 buttons to enter the numbers.
9. Press [MENU] button to exit IP Address and press [▲/▼] button to select the next options to enter the numbers.
10. When done, press [MENU] to return to the previous menu.
11. Select Connection Test to check the Internet connectivity.

❏ Set DLNA to On

1. On the Network screen, select Applications and press [ENTER] button to enter the submenu.
2. Press [◀/▶] button to set DLNA to On.



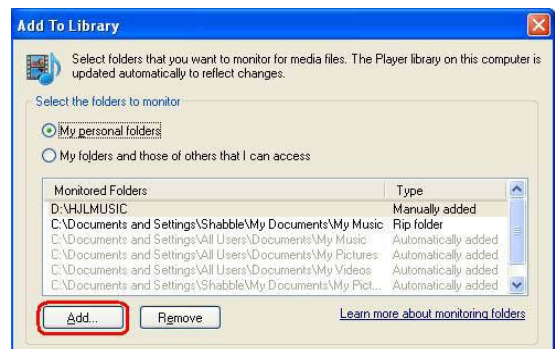
Media Share Settings in Computer

If your computer does not support DLNA, you may install software that supports DLNA such as TVersion or Windows Media Player. We recommend Windows Media Player as the installation and setup is easier.

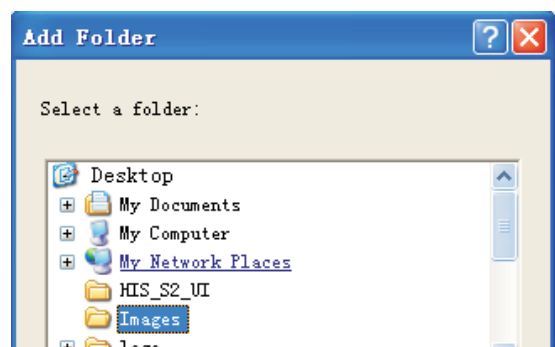
1. Start the Windows Media Player(V11 or higher).
2. Click “Library” and then “Add to Library...”.



3. The “Add To Library” will pop up on the screen. Click “Add”.



4. Select a folder and click “OK”.



5. Click “Close” to close the dialog.