

FIGURE 1
LCD TV (M/N: LTDN40V86MH)
COVER REMOVED



FIGURE 2
LCD TV (M/N: LTDN40V86MH)
LABEL ON LCD PANEL



FIGURE 3
LCD TV (M/N: LTDN40V86MH)
POWER BOARD (COMPONENT SIDE)



FIGURE 4
LCD TV (M/N: LTDN40V86MH)
POWER BOARD (SOLDERED SIDE)

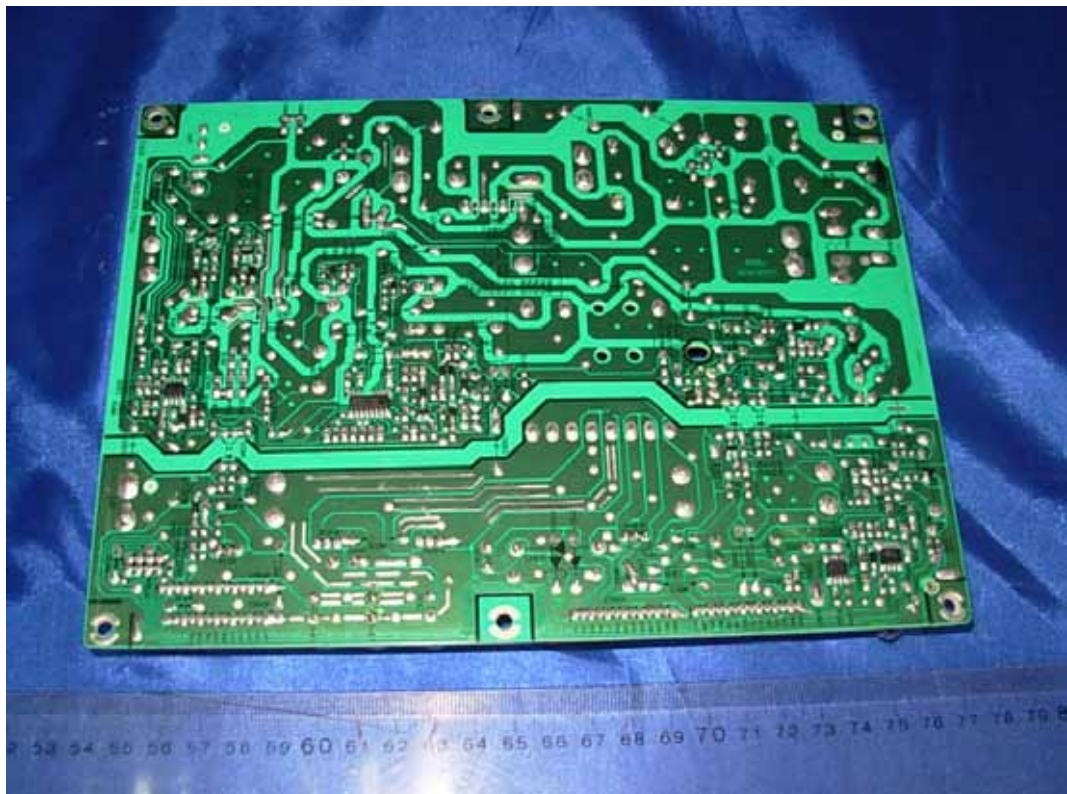


FIGURE 5
LCD TV (M/N: LTDN40V86MH)
MAIN BOARD (COMPONENT SIDE)



FIGURE 6
LCD TV (M/N: LTDN40V86MH)
MAIN BOARD (SOLDERED SIDE)



FIGURE 7
LCD TV (M/N: LTDN40V86MH)
TUNER ON MAIN BOARD



FIGURE 8
LCD TV (M/N: LTDN40V86MH)
CHIP #1 & CRYSTAL #1 ON MAIN BOARD



FIGURE 9
LCD TV (M/N: LTDN40V86MH)
CHIP #2 & CRYSTAL #2 ON MAIN BOARD



FIGURE 10
LCD TV (M/N: LTDN40V86MH)
KEY BOARD (COMPONENT SIDE)

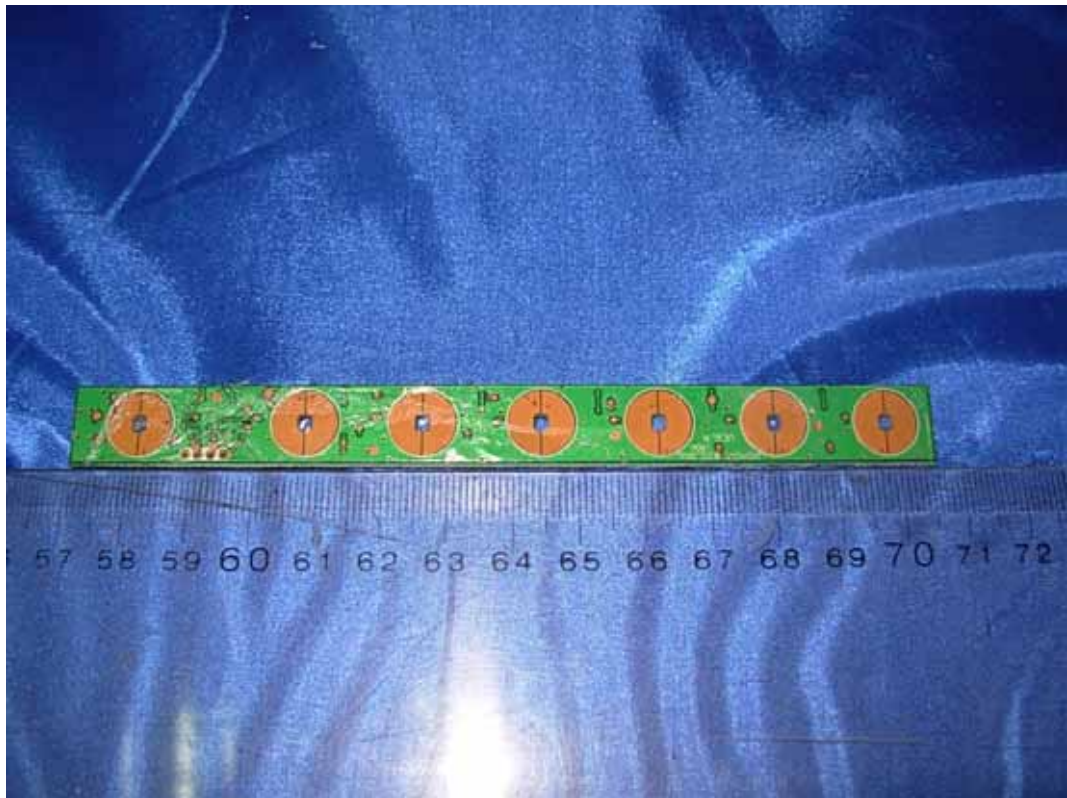


FIGURE 11
LCD TV (M/N: LTDN40V86MH)
KEY BOARD (SOLDERED SIDE)



FIGURE 12
LCD TV (M/N: LTDN40V86MH)
IR BOARD (COMPONENT SIDE)



FIGURE 13
LCD TV (M/N: LTDN40V86MH)
IR BOARD (SOLDERED SIDE)

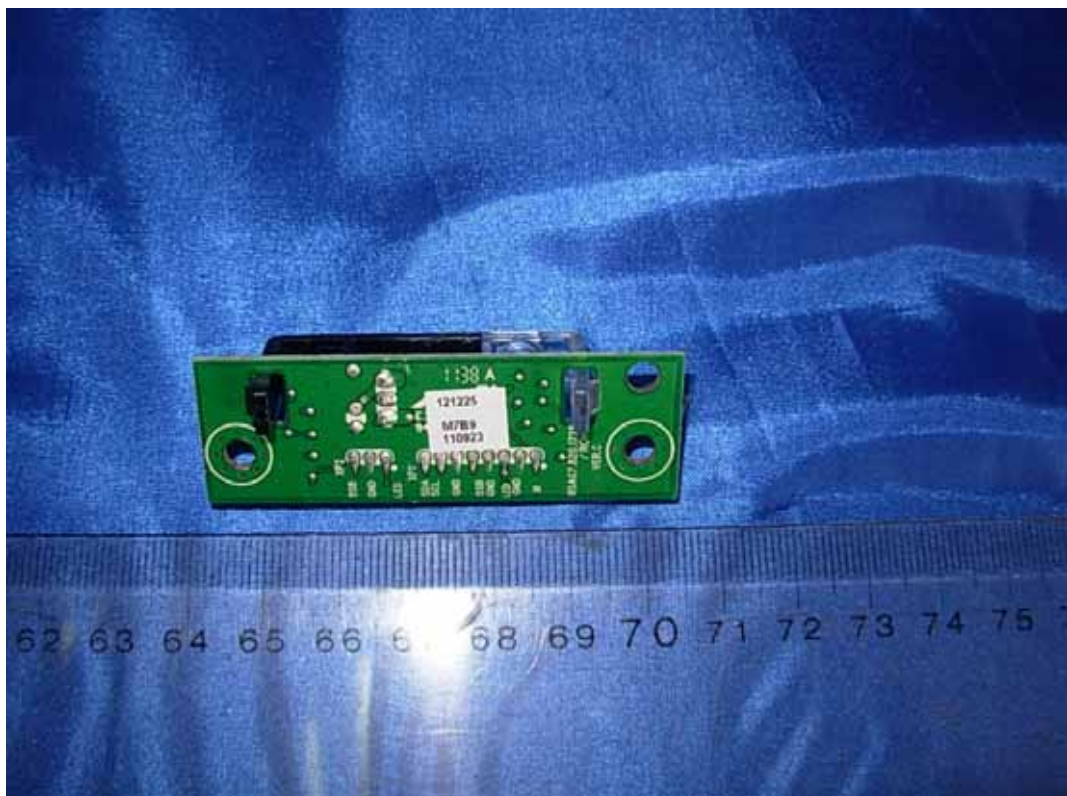


FIGURE 14
LCD TV (M/N: LTDN40V86MH)
HIGH VOLTAGE SIGNAL BOARD (COMPONENT SIDE)

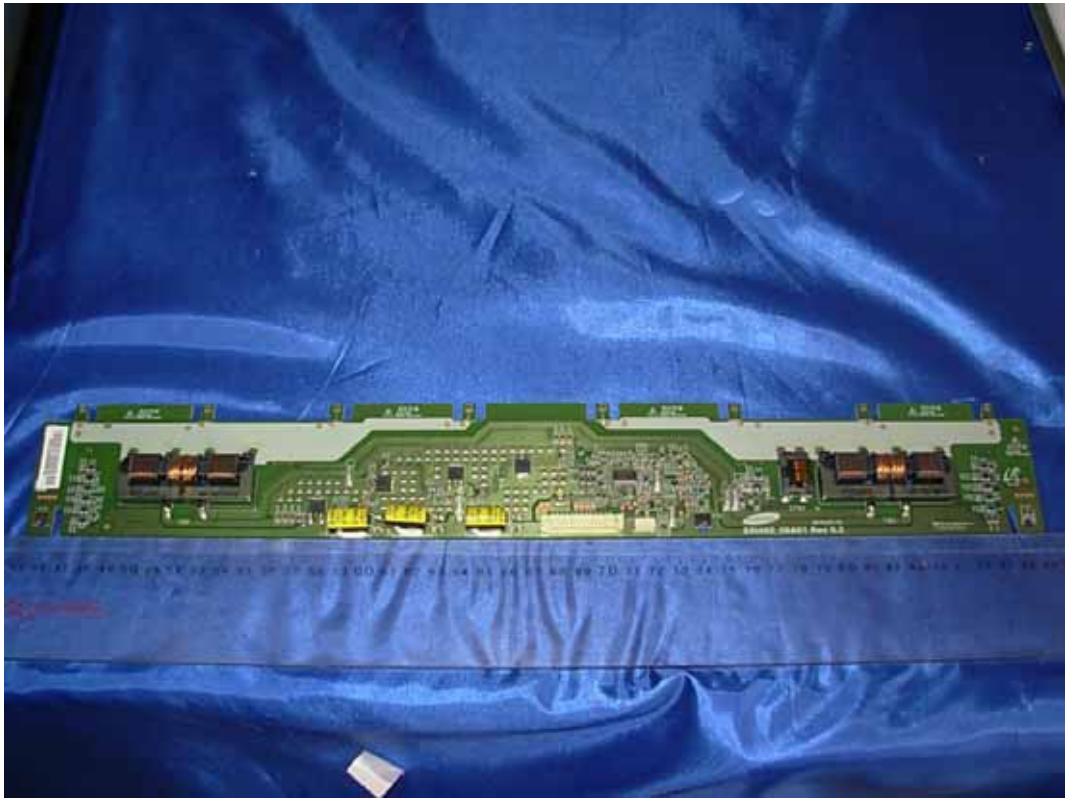


FIGURE 15
LCD TV (M/N: LTDN40V86MH)
HIGH VOLTAGE SIGNAL BOARD (SOLDERED SIDE)



FIGURE 16
LCD TV (M/N: LTDN40V86MH)
DEBUG 1

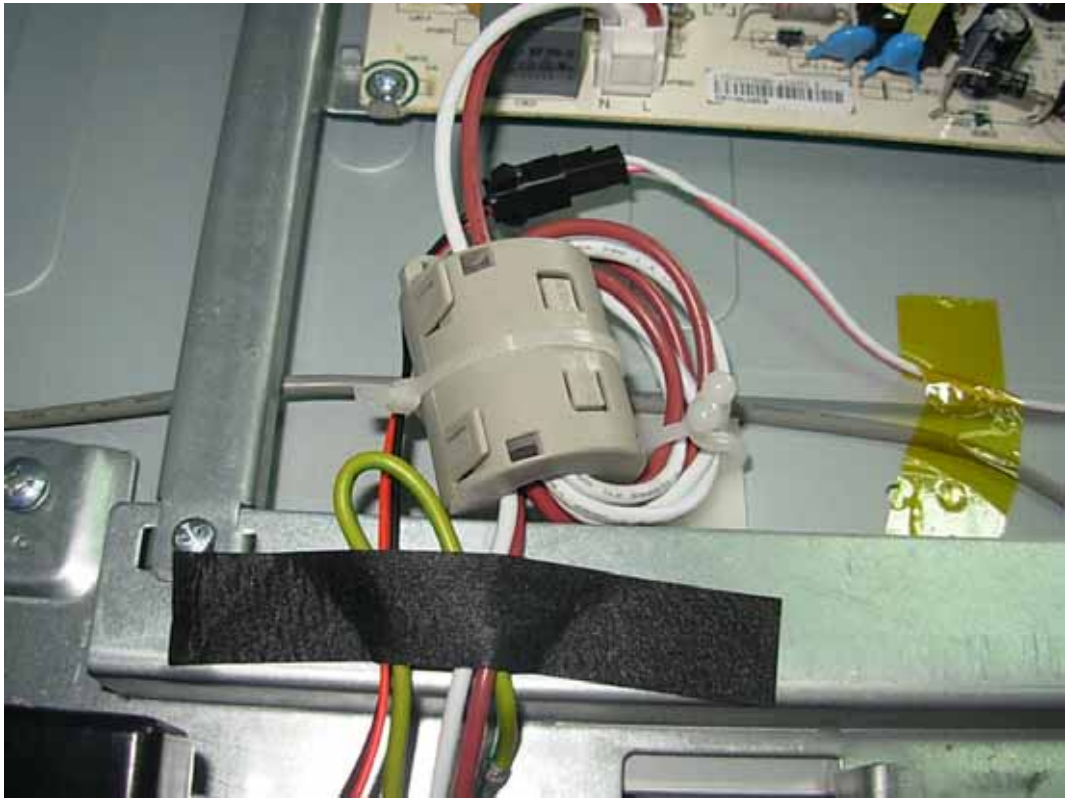


FIGURE 17
LCD TV (M/N: LTDN40V86MH)
DEBUG 2



FIGURE 18
LCD TV (M/N: LTDN40V86MH)
DEBUG 3



FIGURE 19
LCD TV (M/N: LTDN40V86MH)
DEBUG 4

