

FIGURE 1
LCD TV (M/N: LTDN42V87XUS)
COVER REMOVED



FIGURE 2
LCD TV (M/N: LTDN42V87XUS)
POWER BOARD (COMPONENT SIDE)

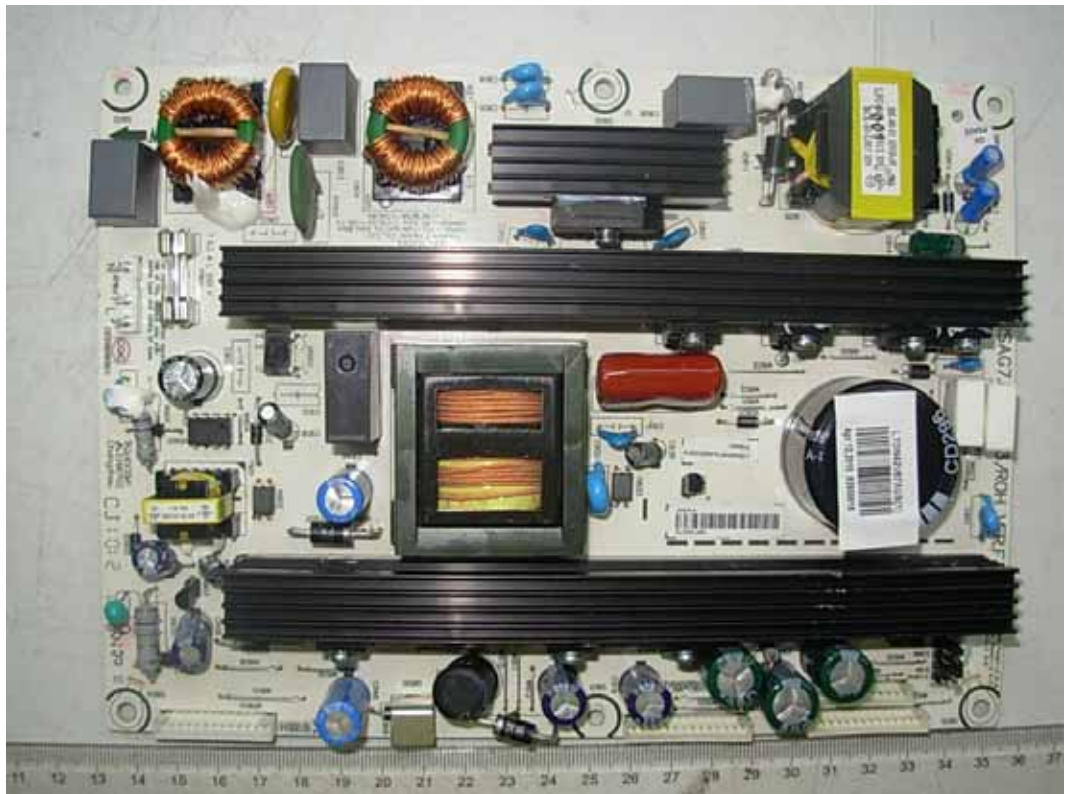


FIGURE 3
LCD TV (M/N: LTDN42V87XUS)
POWER BOARD (SOLDERED SIDE)

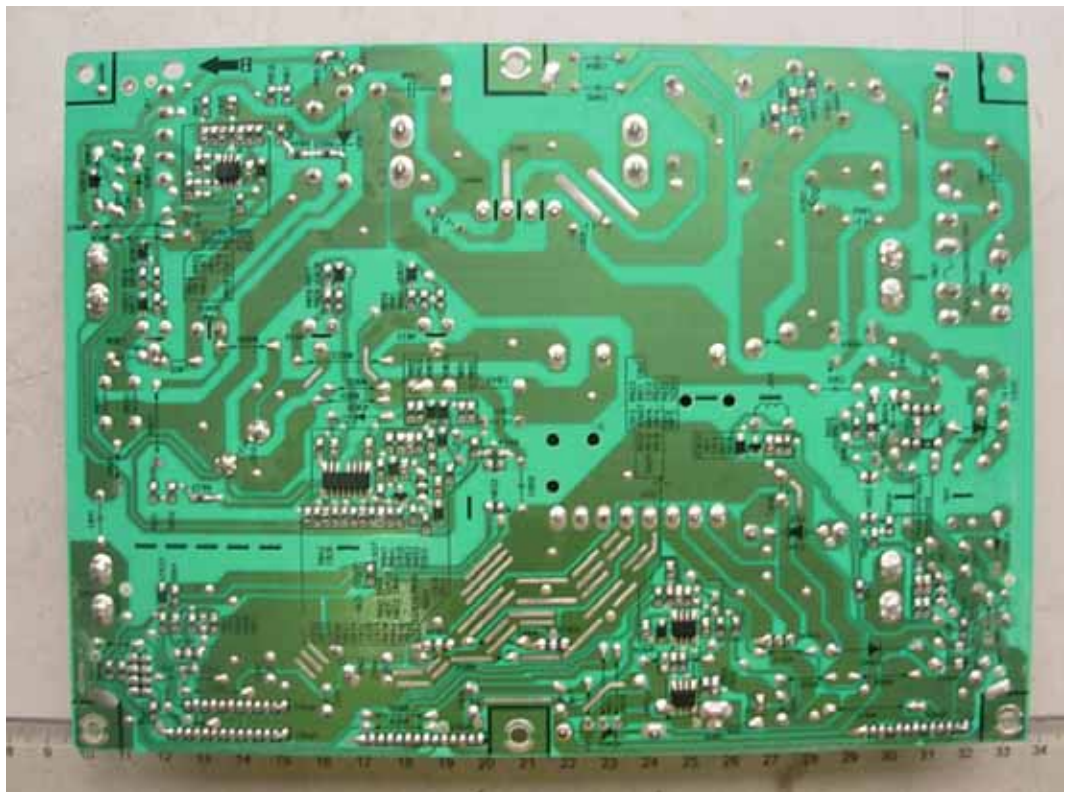


FIGURE 4
LCD TV (M/N: LTDN42V87XUS)
MAIN BOARD (COMPONENT SIDE)

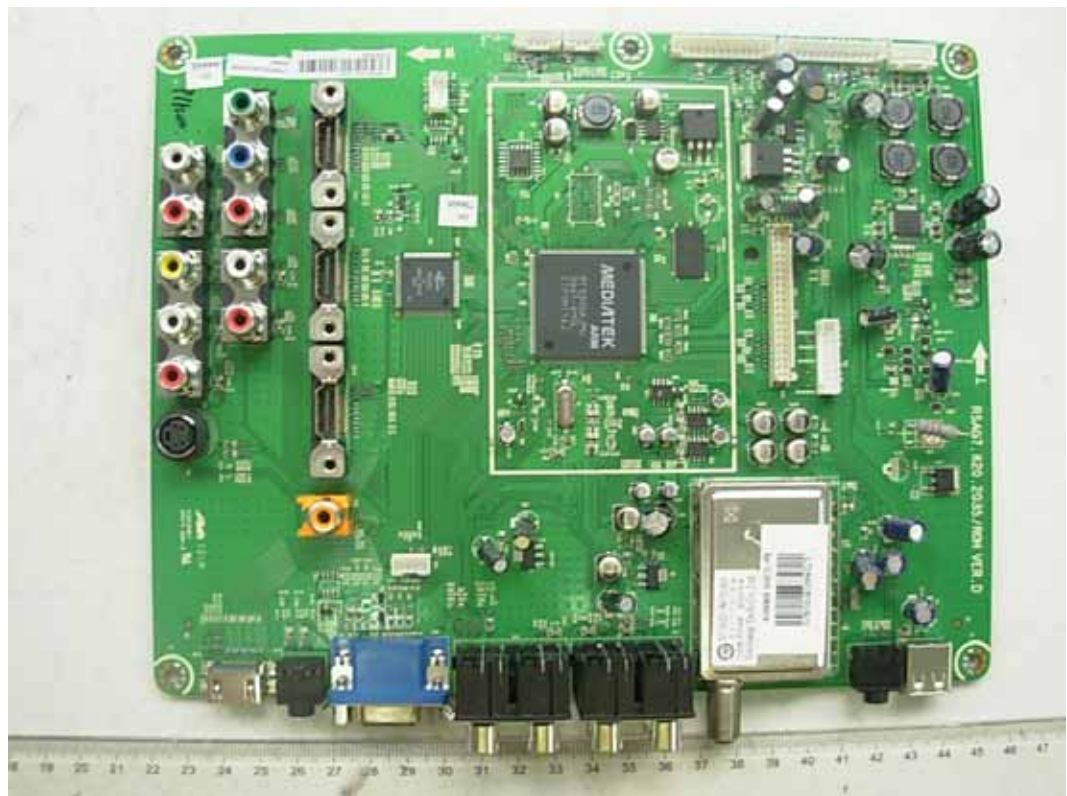


FIGURE 5
LCD TV (M/N: LTDN42V87XUS)
MAIN BOARD (SOLDERED SIDE)



FIGURE 6
LCD TV (M/N: LTDN42V87XUS)
CHIP #1 & CRYSTAL ON MAIN BOARD



FIGURE 7
LCD TV (M/N: LTDN42V87XUS)
CHIP #2 & CRYSTAL ON MAIN BOARD



FIGURE 8
LCD TV (M/N: LTDN42V87XUS)
TUNER



FIGURE 9
LCD TV (M/N: LTDN42V87XUS)
IR BOARD (COMPONENT SIDE)

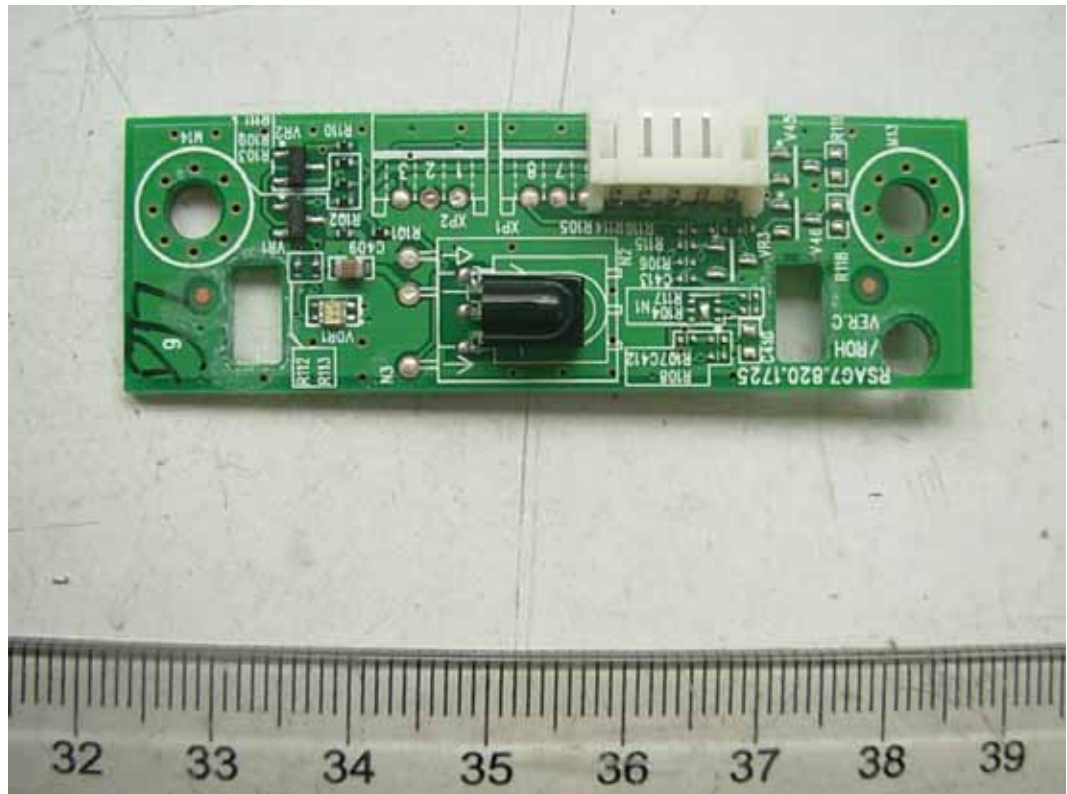


FIGURE 10
LCD TV (M/N: LTDN42V87XUS)
IR BOARD (SOLDERED SIDE)

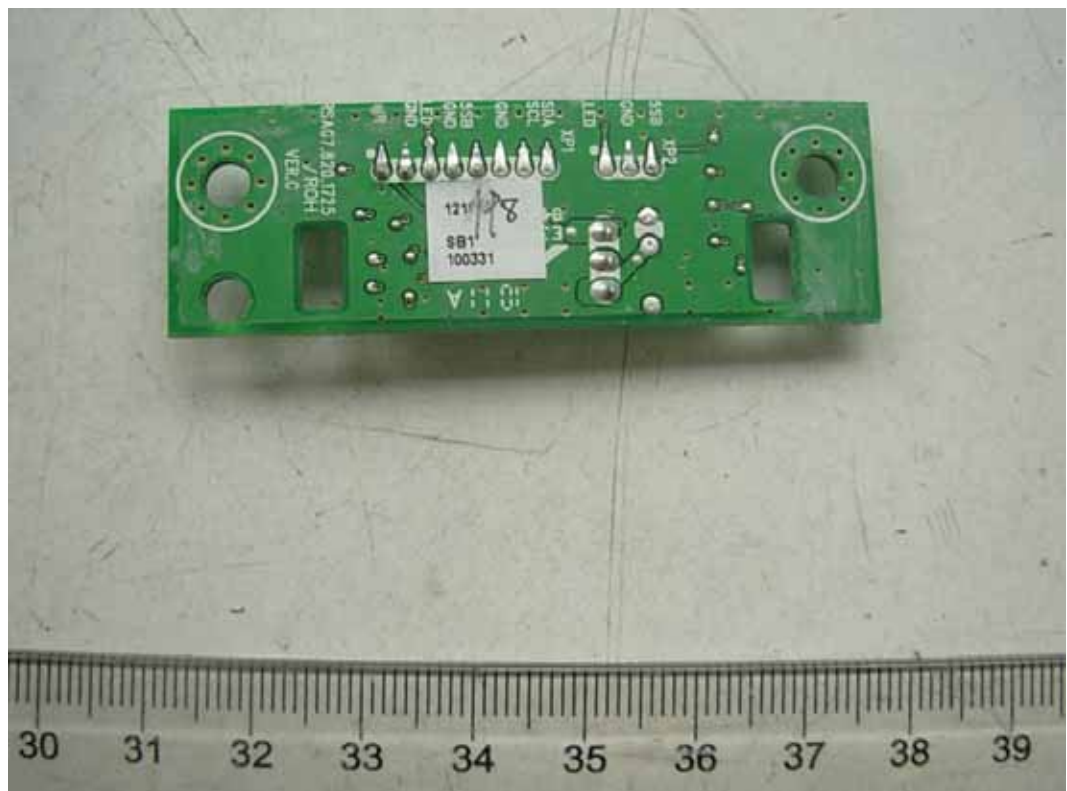


FIGURE 11
LCD TV (M/N: LTDN42V87XUS)
KEY BOARD (COMPONENT SIDE)

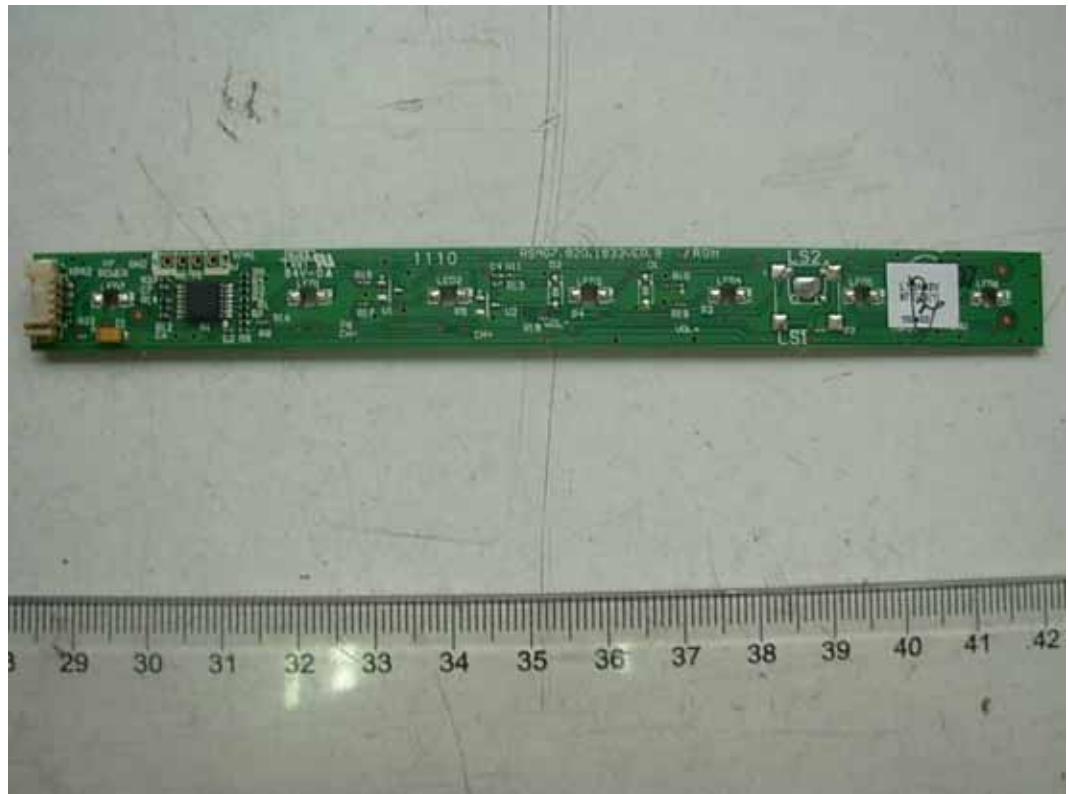


FIGURE 12
LCD TV (M/N: LTDN42V87XUS)
KEY BOARD (SOLDERED SIDE)



FIGURE 13
LCD TV (M/N: LTDN42V87XUS)
LCD PANEL MAIN BOARD (COMPONENT SIDE)



FIGURE 14
LCD TV (M/N: LTDN42V87XUS)
LCD PANEL MAIN BOARD (SOLDERED SIDE)

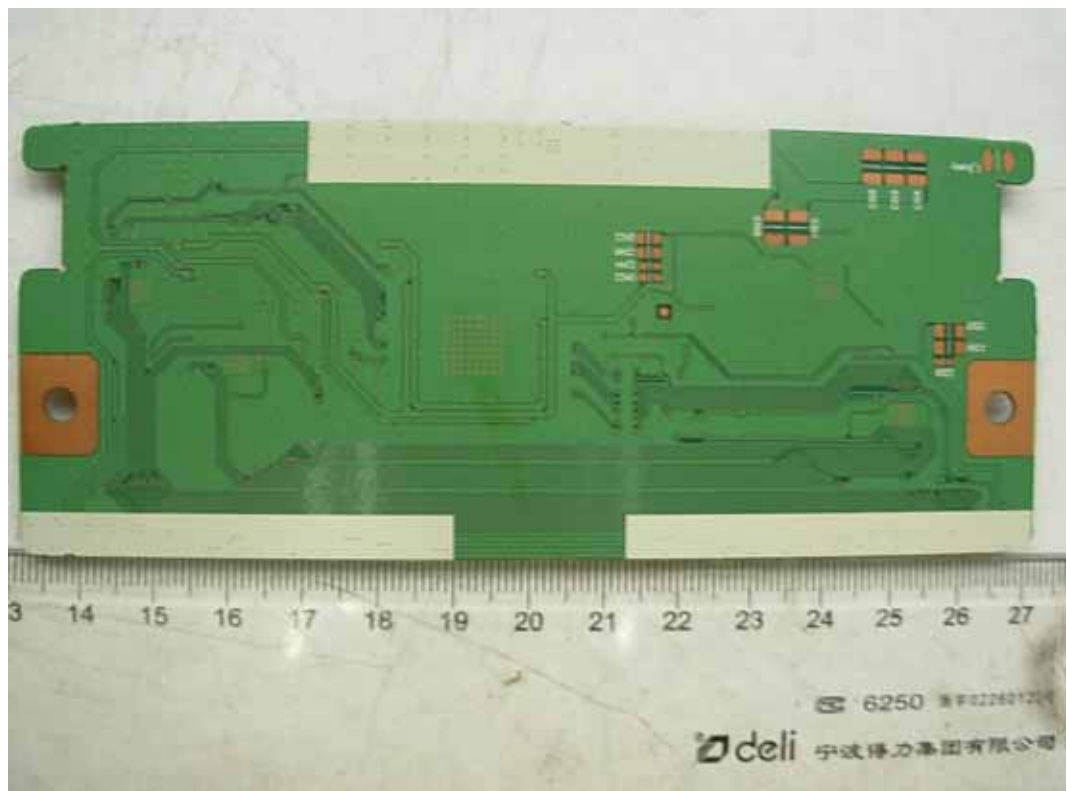


FIGURE 15
LCD TV (M/N: LTDN42V87XUS)
CHIP ON LCD PANEL MAIN BOARD



FIGURE 16
LCD TV (M/N: LTDN42V87XUS)
HIGH VOLTAGE SIGNAL BOARD (COMPONENT SIDE)



FIGURE 17
LCD TV (M/N: LTDN42V87XUS)
HIGH VOLTAGE SIGNAL BOARD (SOLDERED SIDE)

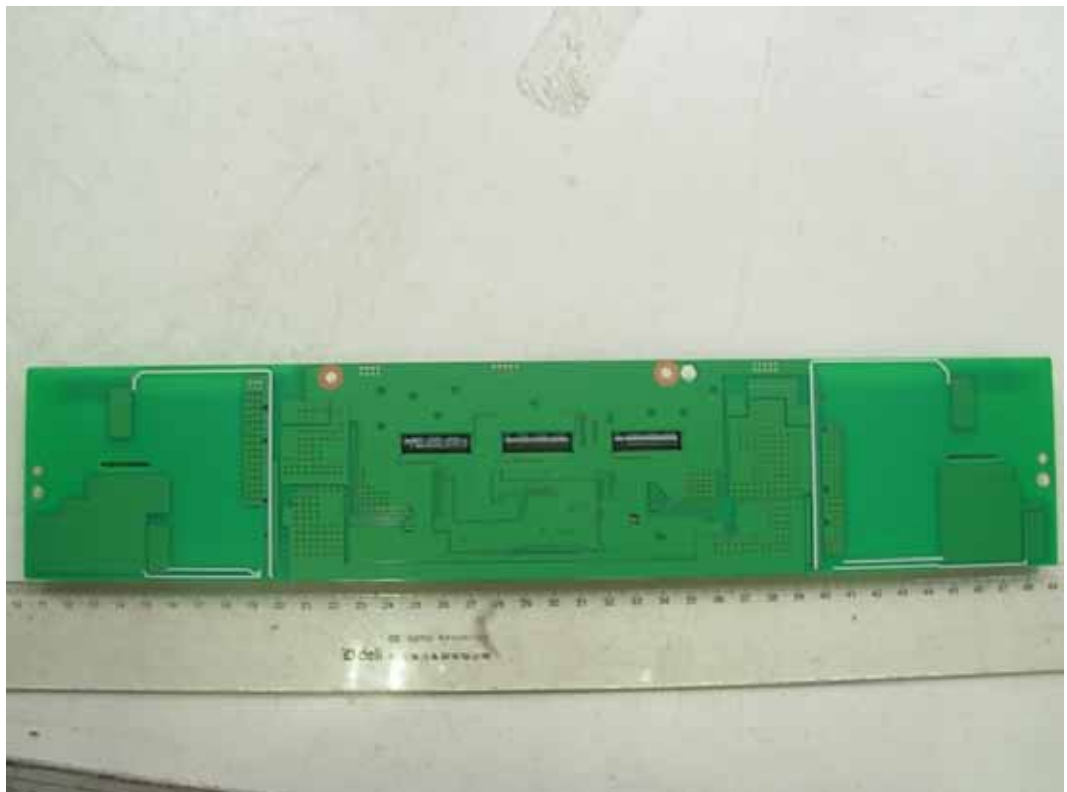


FIGURE 18
LCD TV (M/N: LTDN42V87XUS)
DEBUG #1



FIGURE 19
LCD TV (M/N: LTDN42V87XUS)
DEBUG #2

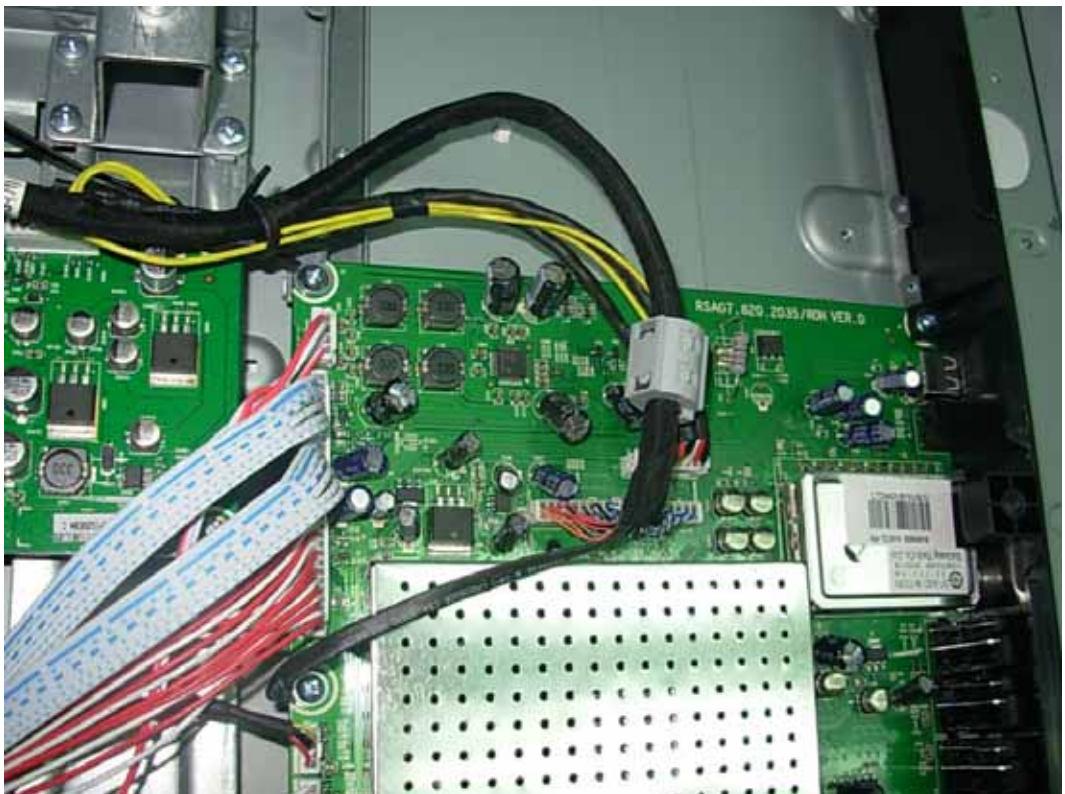


FIGURE 20
LCD TV (M/N: LTDN42V87XUS)
DEBUG #3



FIGURE 21
LCD TV (M/N: LTDN42V87XUS)
DEBUG #4



FIGURE 22
LCD TV (M/N: LTDN42V87XUS)
DEBUG #5

