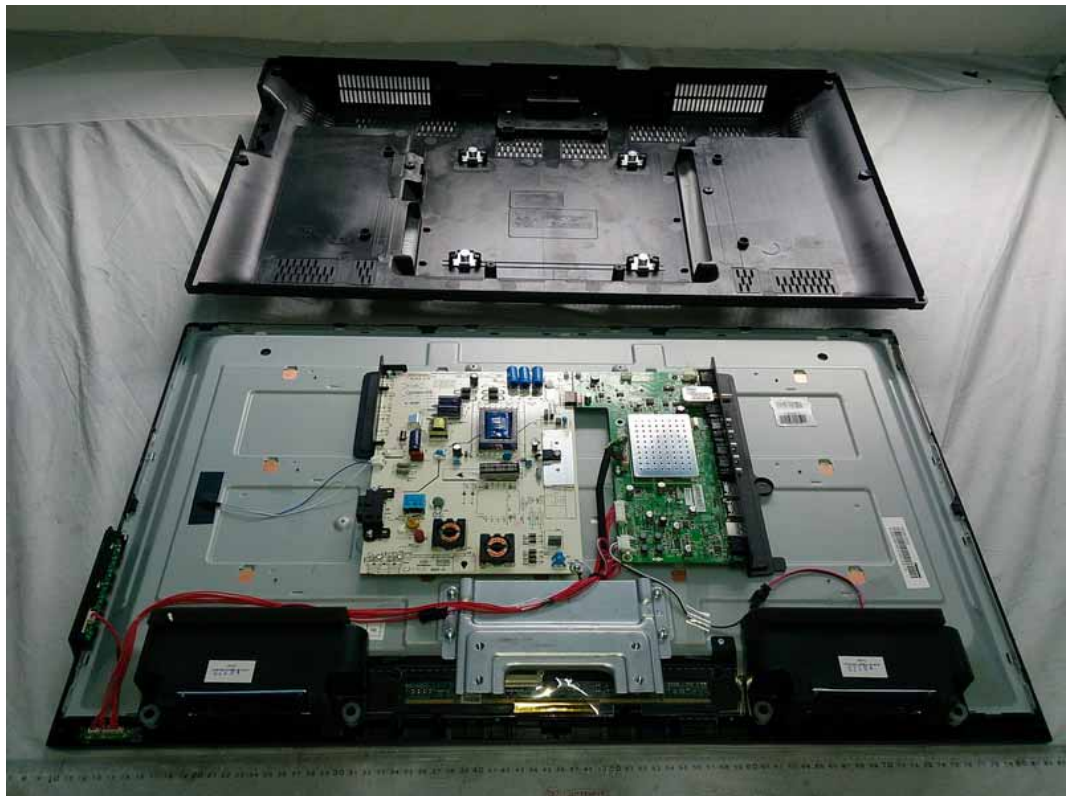


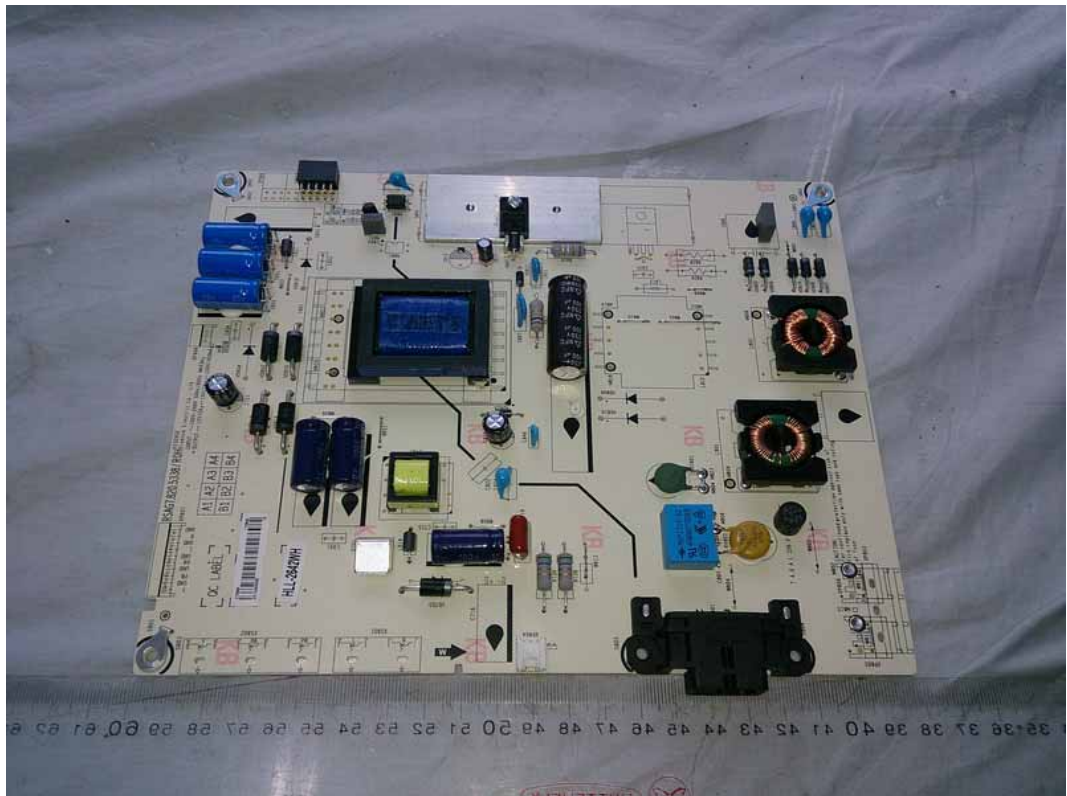
*FIGURE 1*  
*LED LCD TV (M/N: LHD32K20DHUS)*  
*COVER REMOVED*



*FIGURE 2*  
*LED LCD TV (M/N: LHD32K20DHUS)*  
*LCD PANEL LABEL*



*FIGURE 3*  
*LED LCD TV (M/N: LHD32K20DHUS)*  
*POWER BOARD (COMPONENT SIDE)*



*FIGURE 4*  
*LED LCD TV (M/N: LHD32K20DHUS)*  
*POWER BOARD (SOLDERED SIDE)*





*FIGURE 5*  
*LED LCD TV (M/N: LHD32K20DHUS)*  
*MAIN BOARD (COMPONENT SIDE)*



*FIGURE 6*  
*LED LCD TV (M/N: LHD32K20DHUS)*  
*MAIN BOARD (SOLDERED SIDE)*

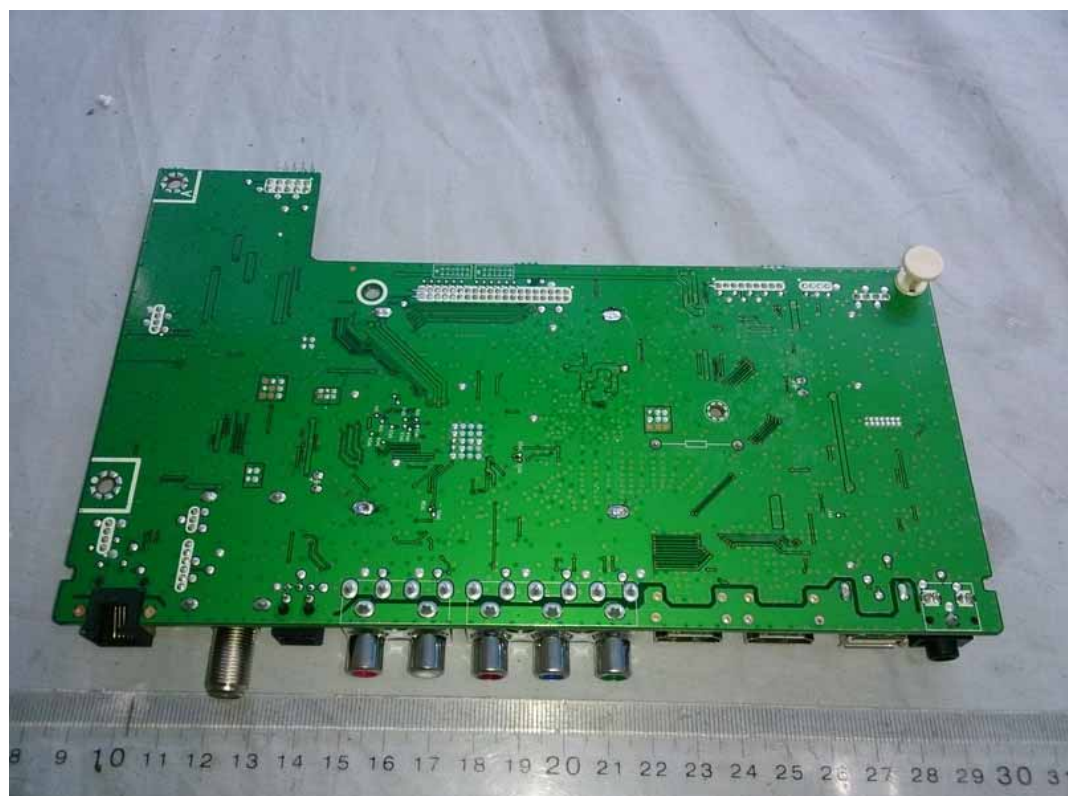




FIGURE 7  
LED LCD TV (M/N: LHD32K20DHUS)  
TUNER ON MAIN BOARD



FIGURE 8  
LED LCD TV (M/N: LHD32K20DHUS)  
CHIP ON MAIN BOARD



FIGURE 9  
LED LCD TV (M/N: LHD32K20DHUS)  
KEY BOARD (COMPONENT SIDE)

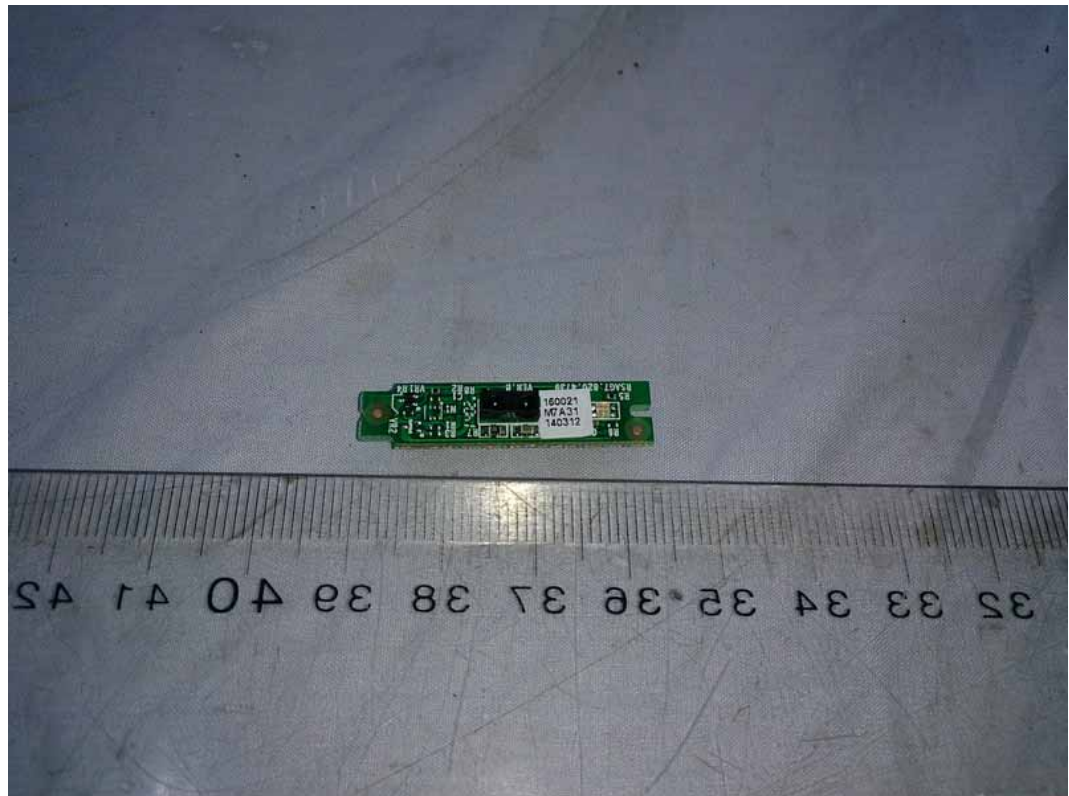


FIGURE 10  
LED LCD TV (M/N: LHD32K20DHUS)  
KEY BOARD (SOLDERED SIDE)

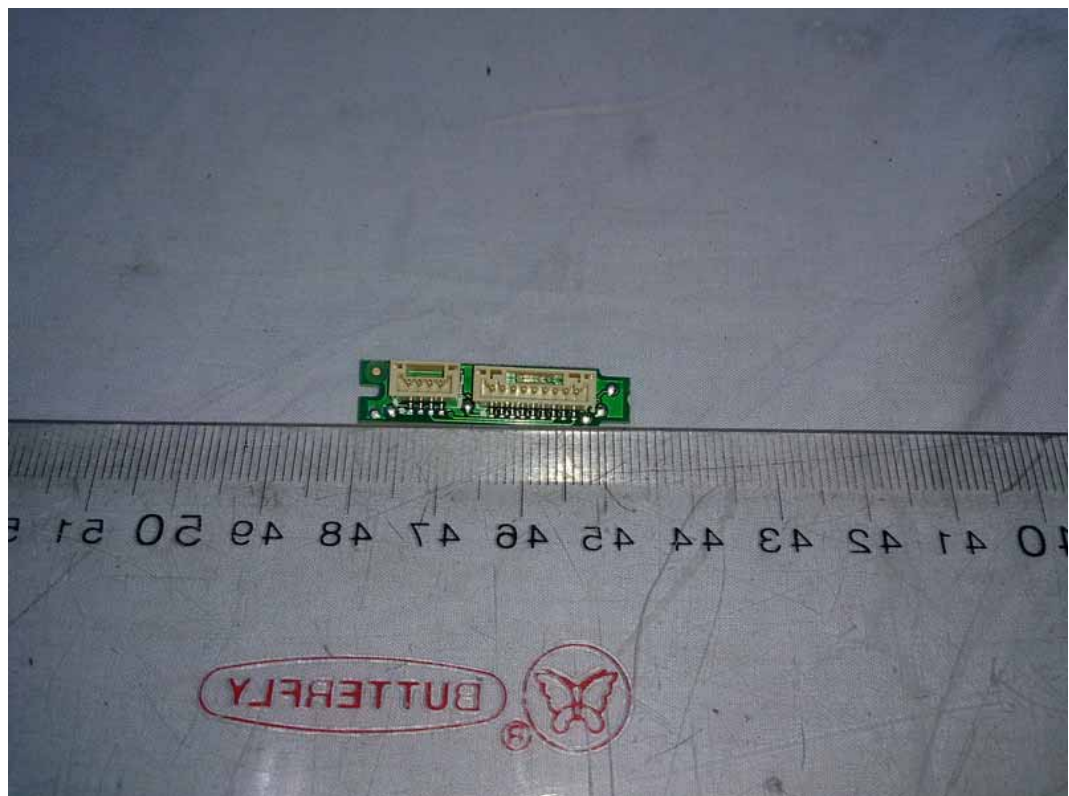




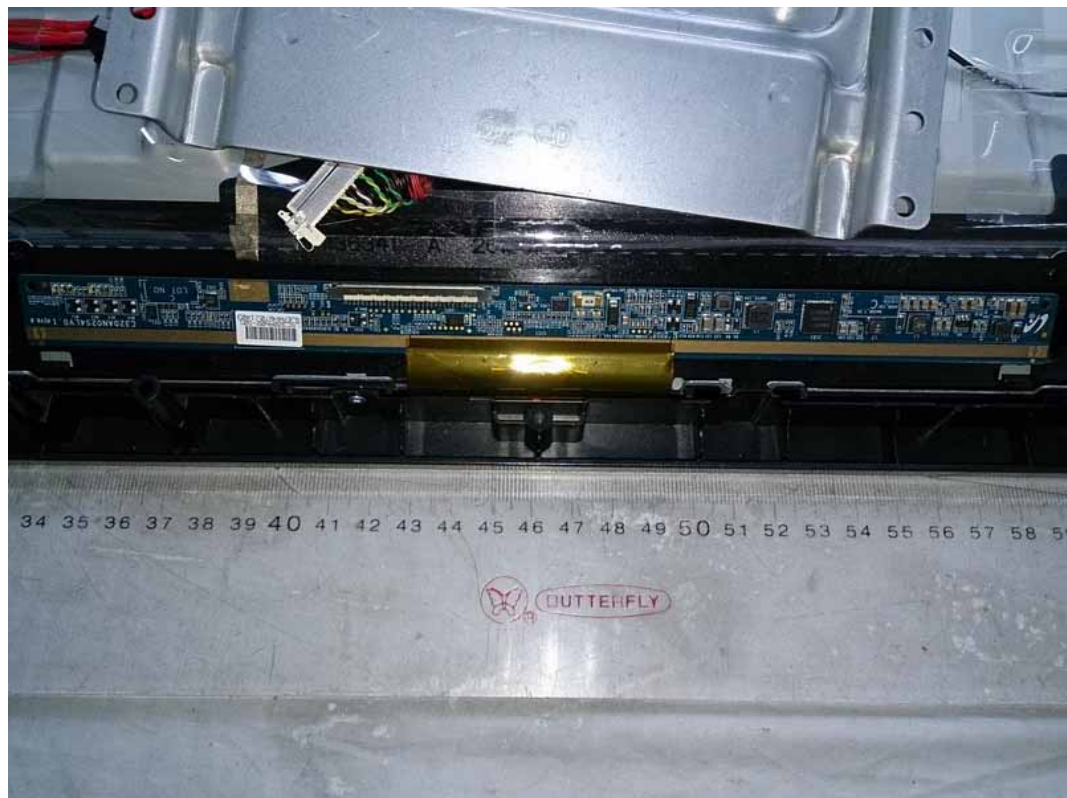
*FIGURE 11*  
*LED LCD TV (M/N: LHD32K20DHUS)*  
*IR BOARD (COMPONENT SIDE)*



*FIGURE 12*  
*LED LCD TV (M/N: LHD32K20DHUS)*  
*IR BOARD (SOLDERED SIDE)*



*FIGURE 13*  
*LED LCD TV (M/N: LHD32K20DHUS)*  
*LCD PANEL CONTROL BOARD (COMPONENT SIDE)*



*FIGURE 14*  
*LED LCD TV (M/N: LHD32K20DHUS)*  
*LCD PANEL CONTROL BOARD (SOLDERED SIDE)*

