

# Electromagnetic Emission

## FCC MEASUREMENT REPORT

### CERTIFICATION OF COMPLIANCE

#### FCC Part 15 Certification Measurement

PRODUCT : REMOTE RADAR  
MODEL/TYPE NO : NEW RL360 / Proto-type  
FCC ID : W75-RL-RCUII  
BRAND NAME : CALIBRE  
APPLICANT : ATTOWAVE CO., LTD.  
1005, 10F Leader's Tower, 60-15 Gasan-dong,  
Gumchun-gu, Seoul, 153-801 Korea  
Attn. : Hyun Joo, Cho / Director  
MANUFACTURER : ATTOWAVE CO., LTD.  
1005, 10F Leader's Tower, 60-15 Gasan-dong,  
Gumchun-gu, Seoul, 153-801 Korea  
FCC CLASSIFICATION : DSC : Part 15 Security/Remote Control Transmitter  
TYPE OF MODULATION : FSK  
FREQUENCY CHANNEL : 433.92 MHz (1 CH)  
ANTENNA TYPE : Mono-pole Antenna (Unique Type)  
FCC RULE PART(S) : FCC Part 15 Subpart C  
FCC PROCEDURE : ANSI C63.4-2003  
TEST REPORT No. : ETLE120630.0779  
DATES OF TEST : July 09, 2012 to July 10, 2012  
REPORT ISSUE DATE : July 18, 2012  
TEST LABORATORY : ETL Inc. (FCC Designation Number : KR0022)

This is REMOTE RADAR, Model NEW RL360 has been tested in accordance with the measurement procedures specified in ANSI C63.4-2003 at the ETL Test Laboratory and has been shown to be complied with the electromagnetic radiated emission limits specified in FCC Rule Part15 Subpart C section 15.231.

I attest to the accuracy of data. All measurement herein was performed by me or was made under my supervision and is correct to the best of my knowledge and belief. I assume full responsibility for the completeness of these measurements and vouch for the qualifications of all persons taking them.

The results of testing in this report apply to the product/system which was tested only. Other similar equipment will not necessarily produce the same results due to production tolerance and measurement uncertainties.

Prepared by:

Jeong Hwan, Pyo (Test Engineer)

July 18, 2012

Reviewed by:

Kug Kyoung, Yoon (Chief Engineer)

July 18, 2012

**ETL Inc.**

**#371-51, Gasan-dong, Geumcheon-gu, Seoul, 153-803, Korea**

**Tel: 82-2-858-0786 Fax: 82-2-858-0788**

*The test report merely corresponds to the test sample(s).*

*This report shall not be reproduced, in whole or in part without the written approval of ETL Inc.*

## Table of Contents

### **FCC Measurement Report**

- 1. Introduction**
- 2. Product Information**
- 3. Description of Tests**
- 4. Test Condition**
- 5. Test Results**
  - 5.1 Summary of Test Results**
  - 5.2 20 dB Bandwidth**
  - 5.3 Radiated Emissions for Periodic radiators**
  - 5.4 Fundamental Radiated Emission**
  - 5.5 Harmonic Radiated Emission**
  - 5.6 Periodic Operation Measurement Plot**
- 6. Sample Calculation**
- 7. List of test Equipment used for Measurement**

**Appendix A. FCC ID Label and Location**

**Appendix B. Test Setup Photographs**

**Appendix C. External Photographs**

**Appendix D. Internal Photographs**

**Appendix E. Block Diagram**

**Appendix F. Circuit Diagram**

**Appendix G. Operating Description**

**Appendix H. User Manual**

**Appendix I. Antenna Requirement**

## FCC MEASUREMENT REPORT

**Scope** – Measurement and determination of electromagnetic emission(EME) of radio frequency devices including intentional radiators and/or unintentional radiators for compliance with the technical rules and regulations of the U.S Federal Communications Commission(FCC)

### General Information

<b>Applicant Name</b>	<b>: ATTOWAVE CO., LTD.</b>
<b>Address</b>	<b>: 1005, 10F Leader's Tower, 60-15 Gasan-dong, Gumchun-gu, Seoul, 153-801 Korea</b>
<b>Attention</b>	<b>: Hyun Joo, Cho / Director</b>

- **EUT Type :** REMOTE RADAR
- **Model Number :** NEW RL360
- **FCC ID :** W75-RL-RCUII
- **S/N :** Proto-type
- **Freq. Range :** 433.92 MHz
- **Number of Channels :** 1 CH
- **Modulation Technique:** FSK
- **Antenna Type:** PCB Antenna (Unique Type)
- **FCC Rule Part(s) :** FCC Part 15 Subpart C section 15.231
- **Test Procedure :** ANSI C63.4-2003
- **FCC Classification :** DSC: Part 15 Security/Remote Control Transmitter
- **Dates of Tests :** July 09, 2012 to July 10, 2012
- **Place of Tests :** ETL Inc. Testing Lab.  
  
Radiated Emission test;  
#499-1, Sagot-ri, Seosin-myeon, Hwaseong-si,  
Gyeonggi-do, 445-882, Korea  
  
Conducted Emission test;  
ETL Inc. Testing Lab.  
371-51, Gasan-dong, Geumcheon-gu, Seoul, 153-803, Korea
- **Test Report No. :** ETLE120630.0779

## 1. INTRODUCTION

The measurement test for radiated and conducted emission test was conducted at the ETL Inc. The site is constructed in conformance with the requirements of the ANSI C63.4-2003 and CISPR Publication 16. The ETL has site descriptions on file with the FCC for 3 m and 10 m site configurations. Detailed description of test facility was found to be in compliance with FCC Rules according to the ANSI C63.4-2003 and registered to the Federal Communications Commission (FCC Designation Number : KR0022).

The measurement procedure described in American National Standard for Method of Measurement of Radio-Noise Emission from Low-Voltage Electrical and Electronic Equipment in the Range of 9 kHz to 40 GHz (ANSI C63.4-2003) was used in determining radiated and conducted emissions from the ATTOWAVE CO., LTD. Model: NEW RL360

## 2. PRODUCT INFORMATION

### 2.1 Equipment Description

The Equipment Under Test (EUT) is the REMOTE RADAR, Model: NEW RL360

### 2.2 General Specification

- Carrier Frequencies: 433.92 MHz (Single Channel)
- Frequency Stabilization Scheme: High-Q SAW Resonator Stabilization
- Modulation Method: Amplitude Shift Keying (By Carrier ON/OFF)
- Bit Duration: "1": 2.25 msec / "0": 1.125 msec
- Operating Temperature Range: (35 ± 45) °C
- Storage Temperature Range: (35 ± 55) °C
- Power Requirements: 3 V CR2032-type Li-Battery

### 3. DESCRIPTION OF TESTS

The tests documented in this report were performed in accordance with ANSI C63.4-2003 and FCC CFR 47 15.207, 15.209 and 15.231.

#### 3.1 Radiated Emission Measurement

Radiated emission measurements were made in accordance with § 13 in ANSI C63.4-2003 "Measurement of Intentional radiators". The measurements were performed over the frequency range of 30 MHz to 40 GHz using antenna as the input transducer to a Spectrum analyzer or a Field Intensity Meter. The measurements were made with the detector set for "Peak, Quasi-peak, Average" within a bandwidth of 100 Hz, 9 kHz, 120 kHz and above 1 GHz is 1 MHz.

Preliminary measurements were made at 3 m using broadband antennas, and spectrum analyzer to determine the frequency producing the maximum emission in shielded room. Appropriate precaution was taken to ensure that all emission from the EUT were maximized and investigated. The system configuration, mode of operation, turntable azimuth and height with respect to the antenna were noted for each frequency found. The spectrum was scanned from 9 kHz to 30 MHz using Loop antenna and 30 MHz to 1 000 MHz using Log-Bicon antenna. Above 1 GHz, linearly polarized double ridge horn antennas were used. Final measurements were made open site at 3 m. The test equipment was laced on a wooden turn-table. Sufficient time for the EUT, support equipment, and test equipment was allowed in order for them to warm up to their normal operating condition. Each frequency found during pre-scan measurements was re-examined by manual. The detector function was set to CISPR Quasi-peak mode and the bandwidth of the receiver was set to 100 Hz, 9 kHz, 120 kHz or 1 MHz depending on the frequency of type of signal. The EUT, support equipment and interconnecting cables were re-configured to the set-up producing the maximum emission for the frequency and were placed on top of a 0.8 m high nonmetallic 1.0 m x 1.5 m table. The EUT, support equipment, and interconnecting cables were re-arranged and manipulated to maximize each emission. The turntable containing the system was rotated; the antenna height was varied 1 m to 4 m and stopped at the azimuth or height producing the maximum emission.

Varying the mode of operating frequencies of the EUT maximized each emission. The system was tested in all the three orthogonal planes and changing the polarity of the antenna. The worst-case emissions are recorded in the data tables. If necessary, the radiated emission measurement could be performed at a closer distance to ensure higher accuracy and the results were extrapolated to the specified distance using an inverse linear distance extrapolation factor (20 dB/decade) as per section 15.31(f).

Photographs of the worst-case emission can be seen in Photographs of the worst-case emission test setup can be seen in Appendix B.

## 3.2 FCC Part 15.205 Restricted Bands of Operations

(a) Except as shown in paragraph (d) of this section, only spurious emissions are permitted in any of the frequency bands listed below:

MHz	MHz	MHz	GHz
0.090 - 0.110	16.42 - 16.423	399.9 - 410	4.5 - 5.15
<sup>1</sup> 0.495 - 0.505	16.694 75 - 16.695 25	608 - 614	5.35 - 5.46
2.173 5 - 2.190 5	16.804 25 - 16.804 75	960 - 1 240	7.25 - 7.75
4.125 - 4.128	25.5 - 25.67	1 300 - 1 427	8.025 - 8.5
4.177 25 - 4.177 75	37.5 - 38.25	1 435 - 1 626.5	9.0 - 9.2
4.207 25 - 4.207 75	73 - 74.6	1 645.5 - 1 646.5	9.3 - 9.5
6.215 - 6.218	74.8 - 75.2	1 660 - 1 710	10.6 - 12.7
6.267 75 - 6.268 25	108 - 121.94	1 718.8 - 1 722.2	13.25 - 13.4
6.311 75 - 6.312 25	123 - 138	2 200 - 2 300	14.47 - 14.5
8.291 - 8.294	149.9 - 150.05	2 310 - 2 390	15.35 - 16.2
8.362 - 8.366	156.524 75 - 156.525 25	2 483.5 - 2 500	17.7 - 21.4
8.376 25 - 8.386 75	156.7 - 156.9	2 690 - 2 900	22.01 - 23.12
8.414 25 - 8.414 75	162.012 5 - 167.17	3 260 - 3 267	23.6 - 24.0
12.29 - 12.293	167.72 - 173.2	3 332 - 3 339	31.2 - 31.8
12.519 75 - 12.520 25	240 - 285	3 345.8 - 3 358	36.43 - 36.5
12.576 75 - 12.577 25	322 - 335.4	3 600 - 4 400	( <sup>2</sup> )
13.36 - 13.41			

<sup>1</sup> Until February 1, 1999, this restricted band shall be 0.490 MHz - 0.510 MHz.

<sup>2</sup> Above 38.6

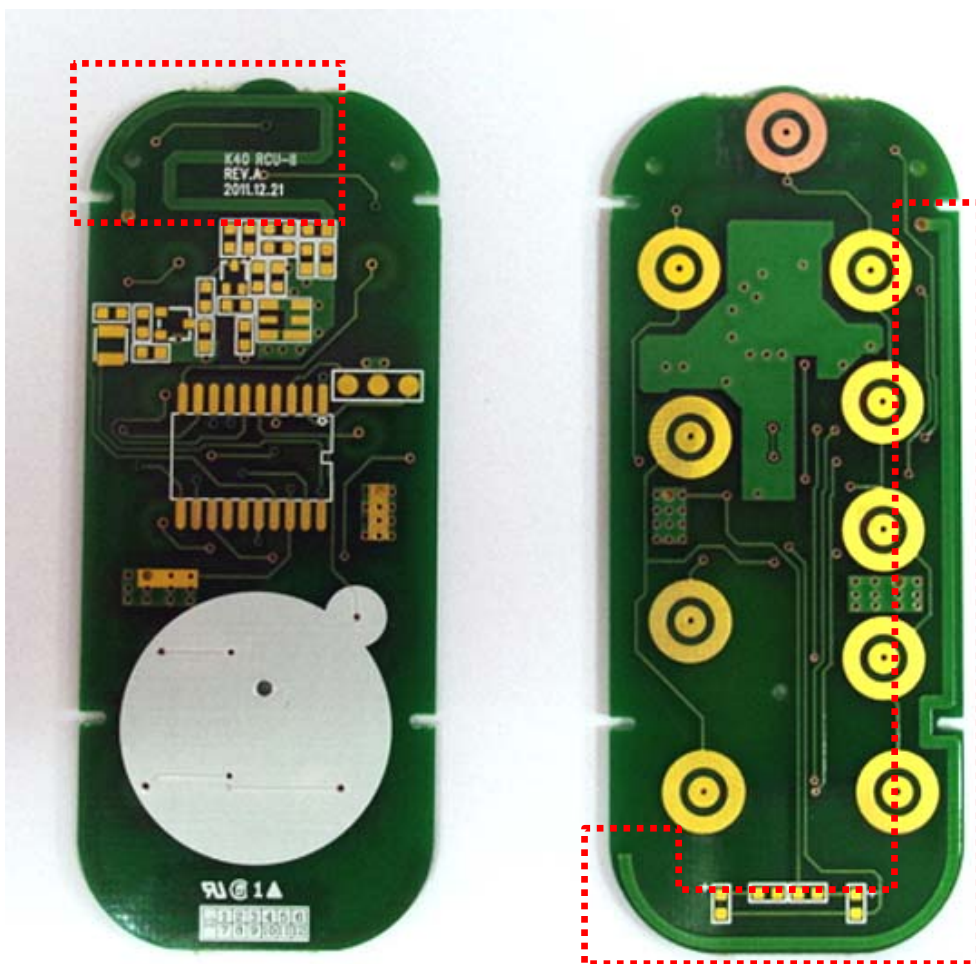
(b) Except as provided in paragraphs (d) and (e), the field strength of emissions appearing within these frequency bands shall not exceed the limits shown in Section 15.209. At frequencies equal to or less than 1 000 MHz, compliance with the limits in Section 15.209 shall be demonstrated using measurement instrumentation employing a CISPR quasi-peak detector. Above 1 000 MHz, compliance with the emission limits in Section 15.209 shall be demonstrated based on the average value of the measured emissions. The provisions in Section 15.35 apply to these measurements.

## 3.3 Antenna requirement

### (1) According to §15.203

An intentional radiator shall be designed to ensure that no antenna other than that furnished by the responsible party shall be used with the device. The use of a permanently attached antenna or of an antenna that uses a unique coupling to the intentional radiator shall be considered sufficient to comply with the provisions of this Section. The manufacturer may design the unit so that a broken antenna can be replaced by the user, but the use of a standard antenna jack or electrical connector is prohibited. This requirement does not apply to carrier current devices or to devices operated under the provisions of Sections 15.211, 15.213, 15.217, 15.219, or 15.221. Further, this requirement does not apply to intentional radiators that must be professionally installed, such as perimeter protection systems and some field disturbance sensors, or to other intentional radiators which, in accordance with Section 15.31(d), must be measured at the installation site. However, the installer shall be responsible for ensuring that the proper antenna is employed so that the limits in this Part are not exceeded.

Antenna Type: Unique



## 4. TEST CONDITION

### 4.1 Test Configuration

The device was configured for testing in a typical fashion (as a customer would normally use it). During the tests, the following conditions and configurations were used.

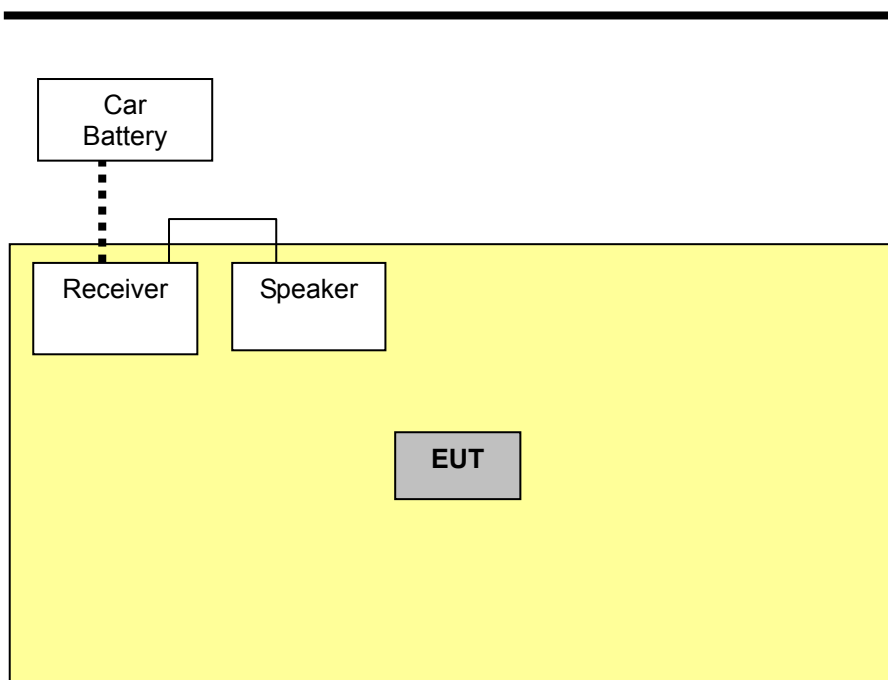
### 4.2 EUT operation

The EUT was connected as user's guide. And during the test executed EUT is operating on the following

- Function of transmitter

The EUT (model: NEW RL360) has been tested under operating condition.  
Fixed Channel (433.92 MHz) was chosen for testing.

### 4.3 The setup drawing(s)



- : Signal line
- : AC Power line
- ... : DC Power line
- : Adapter

## 5. TEST RESULTS

### 5.1 Summary of Test Results

The measurement results were obtained with the EUT tested in the conditions described in this report. Detailed measurement data and plots showing the maximum emission of the EUT are reported.

Applied Standard : 47 CFR Part 15, Subpart C			
FCC Rule	Measurement Required	Result	Remarks
15.207(a)	Power line Conducted Emissions	N/A	1)
15.231(a)(1)	Manually operated transmitter	Pass	
15.231(a)(2)	Automatically activated transmitter	N/A	
15.231(a)(3)	Periodic transmissions at regular predetermined intervals	Pass	
15.231(a)(4)	Radiators used in cases of emergency	N/A	
15.231(a)(5)	Set-up information for security systems	Pass	
15.209(a),231(b)	Radiated Emissions	Pass	
15.231(c)	20 dB Bandwidth	Pass	
15.231(d)	Devices operating within the frequency band 40.66 MHz - 40.70 MHz	N/A	2)
15.231(e)	Radiated emissions for Periodic radiators	N/A	

Notes:

- 1) The EUT is powered by DC power supply that uses battery only.  
(Battery type: DC 3 V, CR2032 type, Li-Battery)
- 2) The frequency range of EUT is 433.92 MHz fixed.

The data collected shows that the **ATTOWAVE CO., LTD. / REMOTE RADAR / NEW RL360** complied with technical requirements of above rules part 15.209 and 15.231 limits.

The equipment is not modified anything, mechanical or circuits to improve EMI status during a measurement. No EMI suppression device(s) was added and/or modified during testing.

## 5.2 20 dB Bandwidth

EUT	REMOTE RADAR / NEW RL360
Limit apply to	FCC Part 15. 231(c)
Test Date	July 10, 2012
Operating Condition	Continues transmitter (433.92 MHz)
Result	Passed

### Limit

The bandwidth of the emission shall be no wider than 0.25% of the center frequency for devices operating above 70 MHz and below 900 MHz. For devices operating above 900 MHz, the emission shall be no wider than 0.5% of the center frequency. Bandwidth is determined at the points 20 dB down from the modulated carrier.

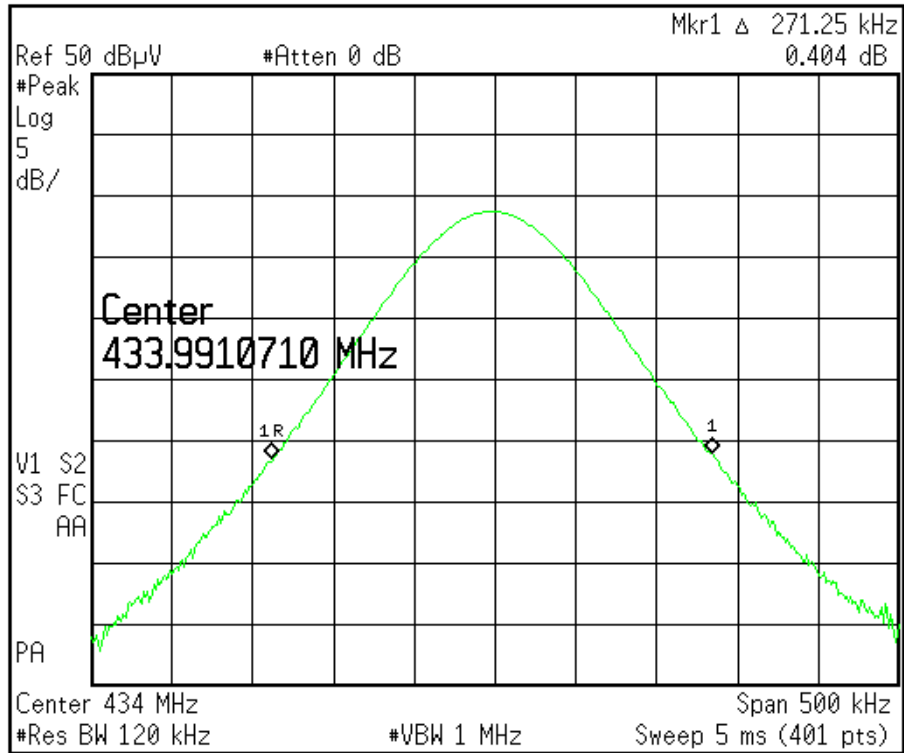
### Test Data

Center Frequency [MHz]	Measured occupied bandwidth [MHz]	Limit [MHz]	Result
433.92	0.271	1.085 (0.25%)	Pass

### NOTES:

1. Please see the measured bandwidth plot in next page.
2. The bandwidth is determined at the points 20 dB down from the modulated carrier.

## 20 dB Bandwidth



## 5.3 Radiated Emissions for Periodic radiators

EUT	REMOTE RADAR / NEW RL360
Limit apply to	FCC Part 15.209(a) & 15.231(b)
Test Date	July 09, 2012
Operating Condition	Continues transmitter (433.92 MHz)
Result	Passed

### Limit

Except as provided elsewhere in this Subpart, the emissions from an intentional radiator shall not exceed the field strength levels specified in the following table:

Frequencies [MHz]	Field Strength [μV/m]	Measurement Distance [m]
0.009 - 0.490	2 400/F(kHz)	300
0.490 - 1.705	24 000/F(kHz)	30
1.705 - 30.0	30	30
30 - 88	100	3
88 - 216	150	3
216 - 960	200	3
Above 960	500	3

\* Except as provided in paragraph (g), fundamental emissions from intentional radiators operating under this Section shall not be located in the frequency bands 54 MHz - 72 MHz, 76 MHz - 88 MHz, 174 MHz - 216 MHz or 470 MHz - 806 MHz. However, operation within these frequency bands is permitted under other sections of this Part, e.g., Sections 15.231 and 15.241.

### Test Results

- Refer to see the measured plot in next page.

## Radiated Emissions Test data

### - 9 kHz to 30 MHz

The following table shows the highest levels of radiated emissions on both polarizations of horizontal and vertical.  
Detector mode: CISPR Quasi-Peak mode (100 Hz, 9 kHz)

Frequency [MHz]	Reading [dB(μV)]	Polarization (*H/**V)	Ant. Factor [dB/m]	Cable Loss [dB]	Result [dB(μV/m)]	Limit [dB(μV/m)]	Margin [dB]
	Emission attenuated more than 20 dB below the limit are not reported.						

#### NOTES:

- \* H : Horizontal polarization , \*\* V : Vertical polarization
- Result = Reading + Antenna factor + Cable loss
- Margin = Limit - Result
- The measurement was performed for the frequency range 9 kHz to 30 MHz according to FCC Part 15.209.

## - Below 1 GHz (30 MHz to 1 GHz)

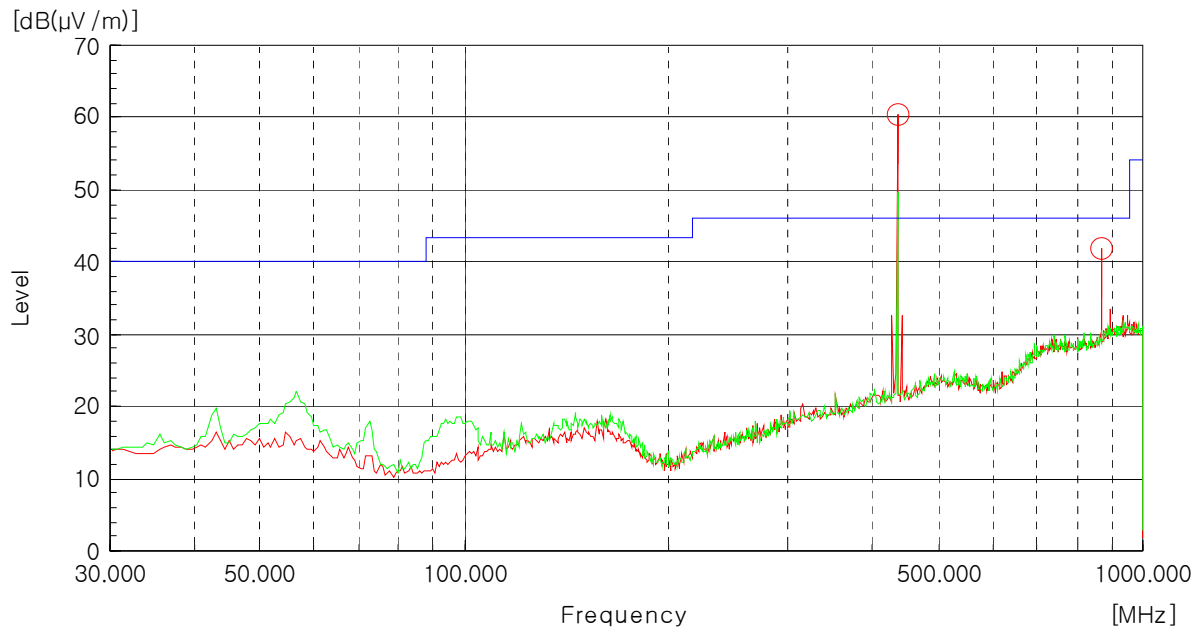
The following table shows the highest levels of radiated emissions on both polarizations of horizontal and vertical.  
Detector mode: CISPR Quasi-Peak mode (6 dB Bandwidth: 120 kHz)

Frequency [MHz]	Reading [dB(μV)]	Polarization (*H/**V)	Ant. Factor [dB/m]	Cable Loss [dB]	Result [dB(μV/m)]	Limit [dB(μV/m)]	Margin [dB]
	<b>Emission attenuated more than 20 dB below the limit are not reported.</b>						

### NOTES:

- \* H : Horizontal polarization , \*\* V : Vertical polarization
- Result = Reading + Antenna factor + Cable loss
- Margin value = Limit - Result
- The measurement was performed for the frequency range above 30 MHz according to FCC Part 15.209.

— : Limit



**- Above 1 GHz (1 GHz to 4.4 GHz)**

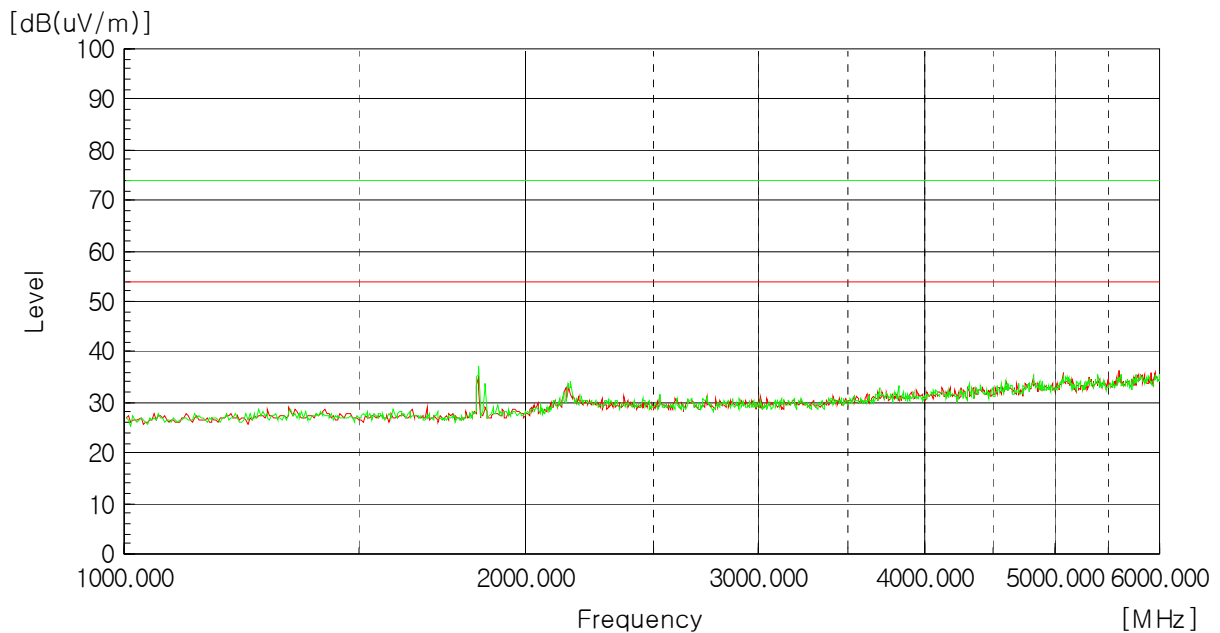
Detector mode: Peak mode

Frequency [MHz]	Reading [dB(μV)]	Polarization (*H/**V)	Factor [dB]	Result [dB(μV/m)]	Limit [dB(μV/m)]	Margin [dB]
	<b>Emission attenuated more than 20 dB below the limit are not reported.</b>					

**NOTES:**

1. \* H : Horizontal polarization , \*\* V : Vertical polarization
2. Factor = Antenna factor + Cable loss + Preamp
3. Result = Reading + Factor
4. Margin = Limit - Result
5. Measuring frequencies from 1 GHz to the 10<sup>th</sup> harmonic of highest fundamental frequency.
6. Measurements above show only up to 6 maximum emissions noted, or would be lesser if no specific emissions from the EUT are recorded (ie: margin > 20 dB from the applicable limit) and considered that's already beyond the background noise floor.
7. Spectrum setting:
  - a. Peak Setting 1 GHz to 10<sup>th</sup> harmonics of fundamental, RBW = 1 MHz, VBW = 1 MHz, Sweep = Auto
  - b. AV Setting 1 GHz to 10<sup>th</sup> harmonics of fundamental, RBW = 1 MHz, VBW = 10 Hz, Sweep = Auto

— : Peak Limit  
— : AV Limit



## 5.4 Fundamental Radiated Emission

EUT	REMOTE RADAR / NEW RL360
Limit apply to	FCC Part 15.231(b)
Test Date	July 10, 2012
Operating Condition	Continues transmitter (433.92 MHz)
Result	Passed

Part 15.231(b) In addition to the provisions of Section 15.205, the field strength of emissions from intentional radiators operated under this Section shall not exceed the following:

Fundamental Frequency [MHz]	Field Strength of Fundamental [microvolts/meter]	Field Strength of Spurious Emission [microvolts/meter]
40.66 - 40.70	2 250	225
70 - 130	1 250	125
130 - 174	1 250 to 3 750**	125 to 375**
174 - 260	3 750	375
260 - 470	3 750 to 12 500**	375 to 1 250**
Above 470	12 500	1 250

\*\* linear interpolations

[Where F is the frequency in MHz, the formulas for calculating the maximum permitted fundamental field strengths are as follows: for the band 130 MHz - 174 MHz,  $\mu\text{V/m}$  at 3 meters =  $56.818 \log(F) - 6136.3636$ ; for the band 260 MHz - 470 MHz,  $\mu\text{V/m}$  at 3 meters =  $41.6667(F) - 7083.3333$ . The maximum permitted unwanted emission level is 20 dB below the maximum permitted fundamental level.]

**Fundamental:  $\mu\text{V/m}$  at 3 meters** =  $41.6667(433.92) - 7083.3333 = 10996.681 = 20\log * 10996.681$   
= 80.83 dB( $\mu\text{V/m}$ )

**Spurious emissions:  $\mu\text{V/m}$  at 3 meters** = 20 dB below of fundamental level  
= 60.83 dB( $\mu\text{V/m}$ )

## Fundamental Radiated Emission Test Data

The following table shows the highest levels of radiated emissions on both polarizations of horizontal and vertical.

- Detector mode: Peak mode

Frequency [MHz]	Polarization (*H/**V)	Result [dB(μV/m)]	Limit [dB(μV/m)]	Margin [dB]
433.92	H	60.40	100.83	40.43

- Detector mode: Average mode

Frequency [MHz]	Polarization (*H/**V)	Duty Cycle Factor [dB]	Result [dB(μV/m)]	Limit [dB(μV/m)]	Margin [dB]
433.92	H	-21.33	60.40	80.83	41.76

### NOTES:

1. \* H : Horizontal polarization , \*\* V : Vertical polarization
2. Result = Reading + Antenna factor + Cable loss
3. Margin value:
  - a. Peak Margin = Limit - Result
  - b. AV Margin = Limit - Result + Duty Cycle Factor
4. Spectrum setting:
  - a. Peak Setting 1 GHz to fundamental, RBW = 1 MHz, VBW = 1 MHz, Sweep = Auto
  - b. AV Setting 1 GHz to fundamental, RBW = 1 MHz, VBW = 10 Hz, Sweep = Auto

## 5.5 Harmonic Radiated Emission

EUT	REMOTE RADAR / NEW RL360
Limit apply to	FCC Part 15.231(b)
Test Date	July 10, 2012
Operating Condition	Continues transmitter (433.92 MHz)
Result	Passed

### Harmonic Radiated Emission Test Data

The following table shows the highest levels of radiated emissions on both polarizations of horizontal and vertical.

- Detector mode: Peak mode

Frequency [MHz]	Polarization (*H/**V)	Result [dB(μV/m)]	Limit [dB(μV/m)]	Margin [dB]
867.90	H	41.80	80.83	39.03
Other frequencies	-	-	-	-

- Detector mode: Average mode

Frequency [MHz]	Polarization (*H/**V)	Duty Cycle Factor [dB]	Result [dB(μV/m)]	Limit [dB(μV/m)]	Margin [dB]
867.90	H	-21.33	41.80	60.83	40.36
Other frequencies	-	-	-	-	-

#### NOTES:

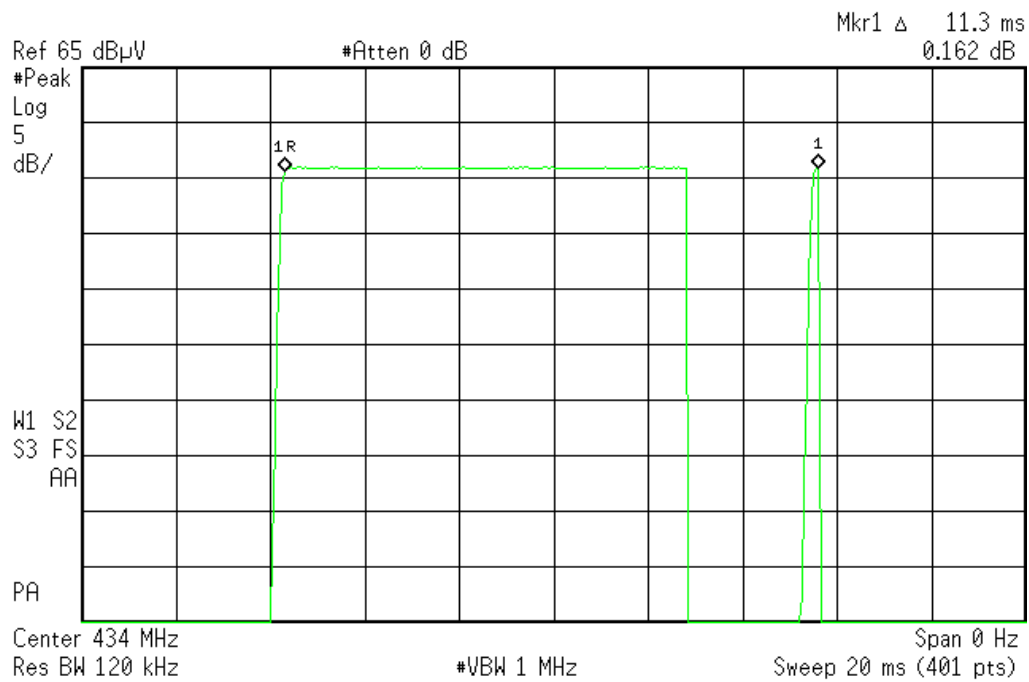
- \* H : Horizontal polarization , \*\* V : Vertical polarization
- Result = Reading + Antenna factor + Cable loss + Preamp
- Margin value
  - Peak Margin = Limit - Result
  - AV Margin = Limit - Result + Duty Cycle Factor
- Measuring frequencies from 1 GHz to the 10<sup>th</sup> harmonic of highest fundamental frequency.
- Spectrum setting:
  - Peak Setting 1 GHz to 10<sup>th</sup> harmonics of fundamental, RBW = 1 MHz, VBW = 1 MHz, Sweep = Auto
  - AV Setting 1 GHz to 10<sup>th</sup> harmonics of fundamental, RBW = 1 MHz, VBW = 10 Hz, Sweep = Auto

## 5.6 Periodic Operation Measurement Plot

TX on time = 11.30 ms

Limit(s) = 5 s

Result ■ Pass □ Fail



## 5.6.1 Duty cycle

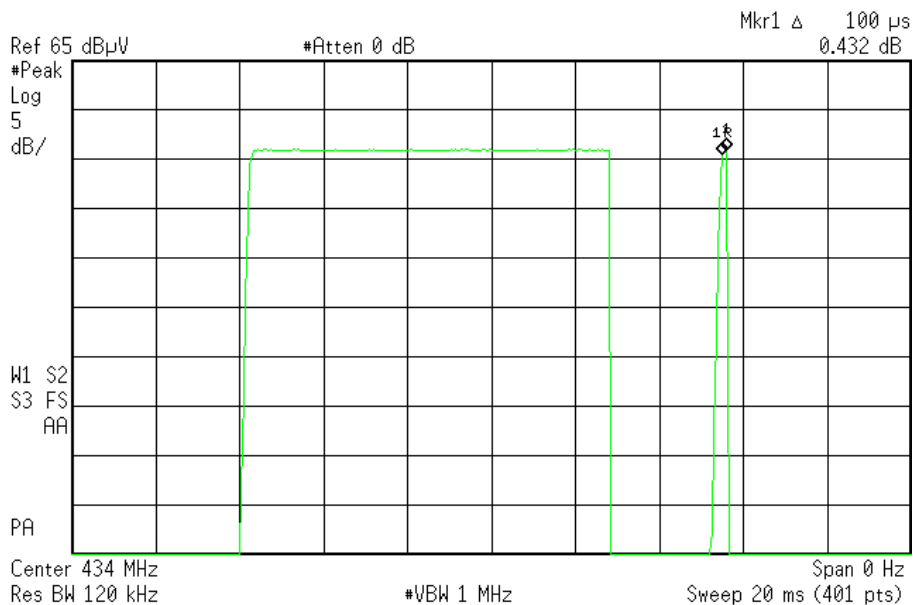
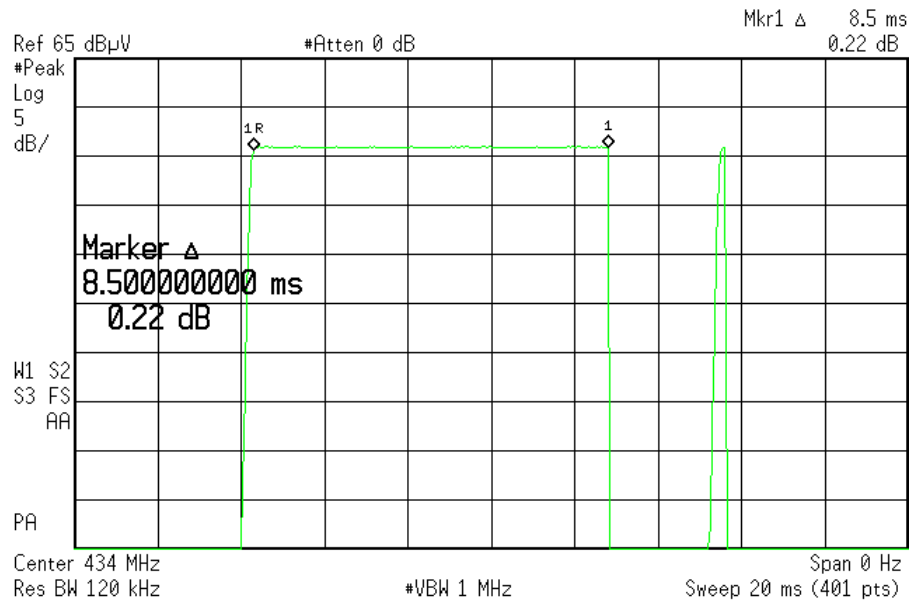
Calculation;

Duty cycle factor =  $20\log(\text{on time}/\text{period})$

$20\log(8.6 \text{ ms}/100.0 \text{ ms}) = -21.33 \text{ dB}$

On time =  $8.5 \text{ ms} + 0.1 \text{ ms} = 8.6 \text{ ms}$

Period =  $100.0 \text{ ms}$



## 6. SAMPLE CALCULATION

### Sample Field Strength Calculation

The field strength is calculated by adding the Antenna Factor and Cable Factor.

The basic equation with a sample calculation is as follows:

$$FS = RA + AF + CF$$

Where FS = Field Strength

RA = Receiver Amplitude

AF = Antenna Factor

CF = Cable Attenuation Factor

$$dB(\mu V) = 20 \log_{10} (\mu V)$$

$$dB(\mu V) = dBm + 107$$

Example : @                      MHz

$$\text{Limit} = \text{dB}(\mu V/m)$$

$$\text{Reading} = \text{dB}(\mu V)$$

$$\text{Antenna Factor} + \text{Cable Loss} = + = \text{dB}(\mu V/m)$$

$$\text{Total} = \text{dB}(\mu V/m)$$

$$\text{Margin} = - = \text{dB}$$

$$= \text{dB below Limit}$$

**\* Emission attenuated more than 20 dB below the limit are not reported.**

## 7. List of test equipments used for measurements

	Test Equipment	Model	Mfg.	Serial No.	Cal. Date	Cal. Due Date
<input checked="" type="checkbox"/>	EMI Test Receiver	ESVS 10	R&S	835165/001	12.03.20	13.03.20
<input checked="" type="checkbox"/>	EMI Test Receiver	ESCI7	R&S	100851	11.09.15	12.09.15
<input checked="" type="checkbox"/>	Loop Antenna	6502	EMCO	00033743	10.10.13	12.10.13
<input checked="" type="checkbox"/>	LogBicon Antenna	VULB9160	Schwarzbeck	3128	12.02.22	14.02.22
<input checked="" type="checkbox"/>	Horn Antenna	BBHA 9120D	Schwarzbeck	277	11.03.22	13.03.22
<input checked="" type="checkbox"/>	Amplifier	AFS42-01001800-28-10P-42	MITEQ Inc.	1565819	12.02.06	13.02.06
<input checked="" type="checkbox"/>	Controller	HD2000	HD GmbH	C/125	N/A	N/A
<input checked="" type="checkbox"/>	Antenna Master	MA2400	HD GmbH	N/A	N/A	N/A
<input checked="" type="checkbox"/>	Turn-Table	MFT-120S	Max-Full Antenna Corp	-	N/A	N/A
<input checked="" type="checkbox"/>	Antenna Master	MFA-440E	Max-Full Antenna Corp	-	N/A	N/A