

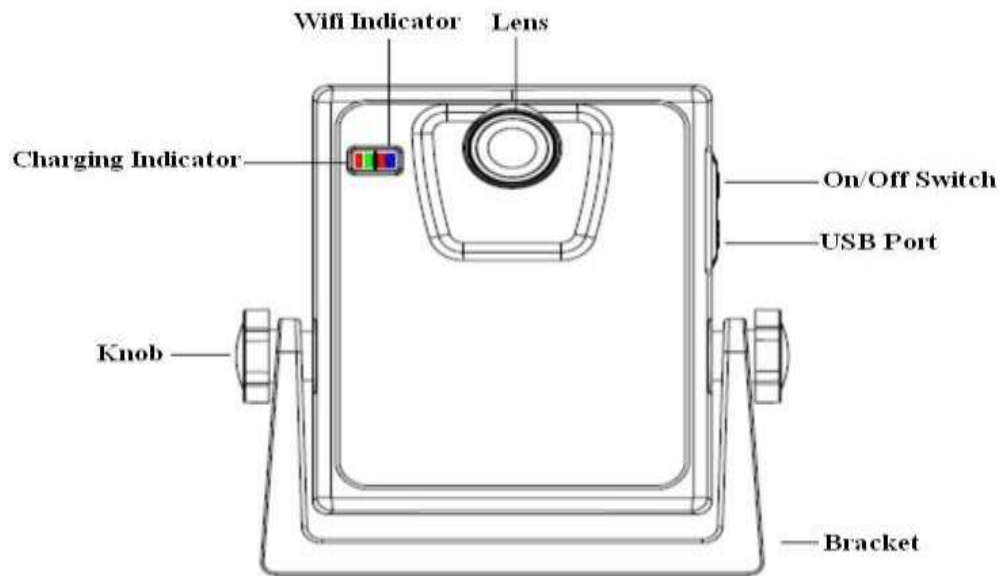
VT-C6109

FCC ID: W3DVT-C6109

All rights reserved copy

VT-C6109 Backeye Instruction of use

1.) VT-C6109 Backeye Product picture



2.) Long press the VT-C6109 power switch button for 3 seconds , the indicator LED lights , switch on .

3.) Click on the IPHONE standby “settings” icon into the desktop settings interface, click the “WIFI” option to choose “BACKeye” WIFI SSID.

4.)In the password input “BACKeye” password “12345678” , click “add” button, when after “BACKeye” the left appear “ ✓ ”, exit “settings” , enter the standby interface of IPHONE .

5.) The standby interface, click on the “Backeye”icon into the Backeye app for video surveillance.



6.) If in the above screen 5 seconds without any operation , it will automatically be entered into a state of full screen.



7.) Click on the “⚙️” icon, carries on the Settings and view the software information.



8.) Click on the “Camera Configuration” button to WIFI name change and password change.



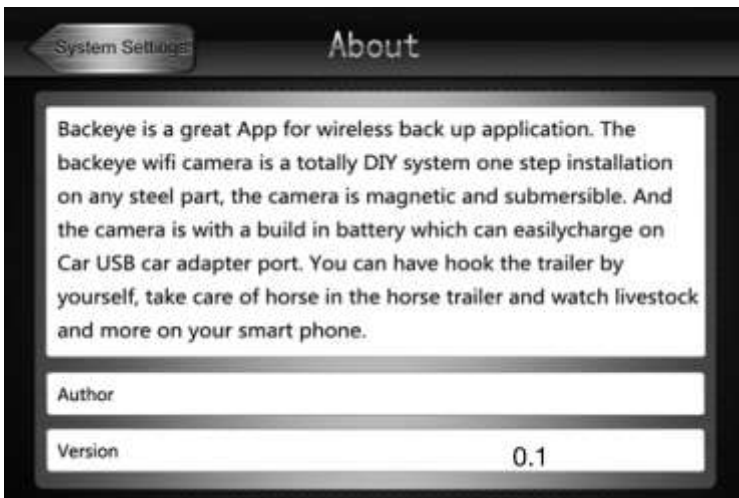
9.) Click on the “Change WIFI name” button to change the name of the WIFI.
After change the name of the WIFI must reboot the machine power supply.



10.) Click on the “Change Password” button to change the password. After change the WIFI password must reboot the machine power supply.




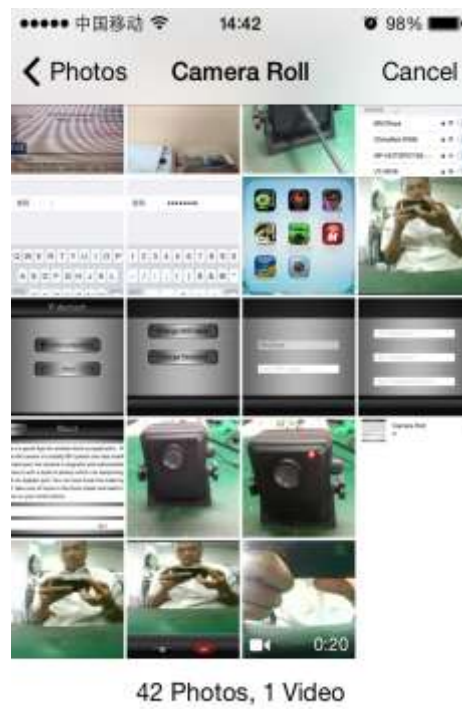
11.) Click on the “I about “button to view the App software information.



12.) Click on the “” to photograph, click on the “” for video footage.



13.) Click the button to “” have take pictures and watch the video of video files .



14.) Click on the “” button to exit the Backeye App software.



Changes or modifications not expressly approved by the party responsible for compliance could void the user's authority to operate the equipment.

This device complies with Part 15 of the FCC Rules. Operation is subject to the following two conditions:

- (1) this device may not cause harmful interference, and
- (2) this device must accept any interference received, including interference that may cause undesired operation.

FCC Radiation Exposure Statement:

This equipment complies with FCC radiation exposure limits set forth for an uncontrolled environment. This equipment should be installed and operated with minimum distance 20cm between the radiator & your body.

This device is acting as slave and operating in the 2.4 GHz (2412 ~2462 MHz) band.

Ad Hoc function is supported but not able to operate on non-US frequencies. Do not use the device with the environment which below minimum -10°C or maximum over 50°C .