

Precautions

- Stop using this product immediately if it causes discomfort or pain.
- Do not expose the product to high temperatures, high humidity or direct sunlight.
- Do not allow the product to come into contact with liquids.
- Do not put heavy objects on the product.
- Do not throw or drop the product or subject it to strong physical shock.
- Do not place any rubber or vinyl materials on the product exterior for an extended period of time.
- Use a soft, dry cloth to clean the product. Do not use solvents or other chemicals. Do not wipe with a chemically-treated cleaning cloth.

Specifications

Bluetooth version	Bluetooth 2.0 compliant
Supported Bluetooth profiles	Bluetooth headset and hands-free profiles
Operating range	Up to 30 feet
Talk time	Up to 8 hours
Standby time	Above 300 hours
Charging time	approximately 3 hours
Weight	Headset Approximately 19.5g Charging cradle Approximately 20.5g USB cable Approximately 17.5g
Battery type	Lithium-ion polymer battery
Voltage	DC 3.7 V
Capacity	190mAh
Operating temperature	-20°C → 60°C (-4°F – +140°F)

Manufactured by Namtai under agreement with Sony Computer Entertainment American

Manufactured by Namtai under agreement with Sony Computer Entertainment Canada

Design and specifications are subject to change without notice.

Recycling

Lithium-ion batteries are recyclable. Please recycle or properly dispose of the product in accordance to local regulations when required.

“caution symbol, triangle with exclamation mark” Caution Do not handle damaged or leaking Lithium-ion batteries.

FCC Statement

This device complies with Part 15 of the FCC Rules. Operation is subject to the following two conditions: (1) this device may not cause harmful interference, and (2) this device

must accept any interference received, including interference that may cause undesired operation.

Changes or modifications not expressly approved by the party responsible for compliance could void the user's authority to operate the equipment.

NOTICE

This equipment has been tested and found to comply with the limits for a Class B digital device, pursuant to part 15 of the FCC Rules. These limits are designed to provide reasonable protection against harmful interference in a residential installation.

This equipment generates, uses and can radiate radio frequency energy and, if not installed and used in accordance with the instructions, may cause harmful interference to radio communications. However, there is no guarantee that interference will not occur in a particular installation. If this equipment does cause harmful interference to radio or television reception, which can be determined by turning the equipment off and on, the user is encouraged to try to correct the interference by one or more of the following measures:

- Reorient or relocate the receiving antenna.
- Increase the separation between the equipment and receiver.
- Connect the equipment into an outlet on a circuit different from that to which the receiver is connected.
- Consult the dealer or an experienced radio/TV technician for help.
-

This device complies with FCC RF radiation exposure limits set forth for an uncontrolled environment. End users must follow the specific operating instructions for satisfying RF exposure compliance. The antenna used for this transmitter must be installed to provide a separation distance of at least 20 cm from all persons and must not be co-located or operating in conjunction with any other antenna or transmitter.

The installer of this radio equipment must ensure that the antenna is located or pointed such that it does not emit RF field in excess of Health Canada limits for the general population; consult Safety Code 6, obtainable from Health Canada's website www.hc-sc.gc.ca/rpb.

If you have questions about this product, call our technical support line at 1-800-345-7669, or write to:

Sony Computer Entertainment America
Consumer Services/Technical Support
PO Box 5888, San Mateo, CA 94402-0888 U.S.A.

Declaration of Conformity

Trade name: Sony Computer Entertainment America
Model number: CECHYA-0075

Responsible party: Sony Computer Entertainment America, Inc.
Address: 919 E. Hillsdale Blvd., Foster city, CA 94040 U.S.A

Telephone number: 650-655-8000

For customers in Canada

This Class B digital apparatus complies with Canadian ICES-003.

About the WIRELESS HEADSET

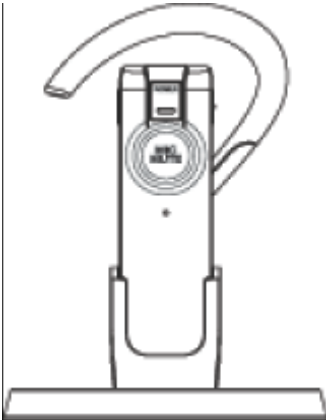
The WIRELESS HEADSET is designed to be used with the PLAYSTATION®3 system. It will also work with most Bluetooth-enabled mobile phones and audio devices.

Note: Before you use your headset for the first time, you must fully charge it and "pair" it with the PS3™ system.

There are four buttons on the WIRELESS HEADSET:

1. Power button
2. Volume + button
3. Volume - button
4. Mic muting button

*****Image of Bluetooth Headset / Cradle with call outs to its buttons and functions – This image still needs to be labeled *****

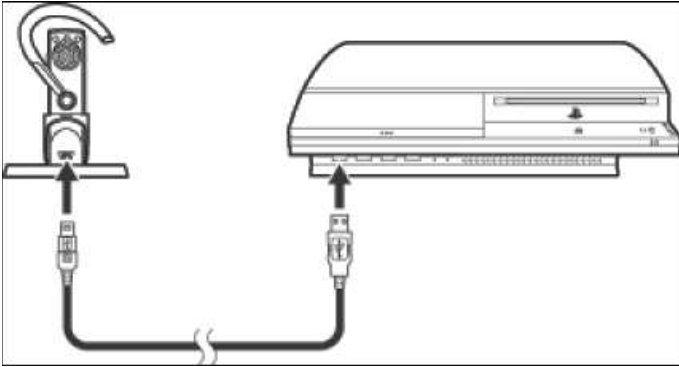


Charging the headset

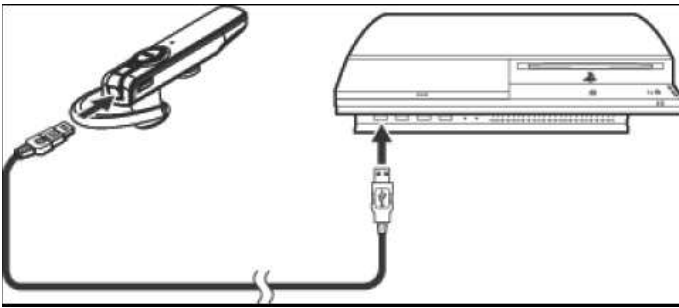
Follow the instructions below to charge the headset.

1. Check that the PS3™ system is turned on.
2. Insert the mini-B connector of the supplied USB cable into the charging cradle, and insert the other end of the cable into a USB connector on the PS3™ system.
3. Place the WIRELESS HEADSET into the charging cradle.
The power indicator on the headset lights up and remains lit in solid red for 2 seconds and then flashes to indicate that the headset is charging. Charging is complete when the indicator is lit solid red.

*****Images of USB cable being plugged into Cradle and PS3, as well as USB cable being plugged into Headset and PS3. These pictures still need to be labeled*****



You can also charge the headset by connecting it directly to the PS3(TM) system using a USB cable.



Note: The headset will be fully charged in approximately three hours.

Pairing the headset with the PS3™ system

Pairing with the PS3™ system using a USB cable

Note: Pairing with the PS3™ system using a USB cable may require updating your PS3™ system software to the latest version. This also equips your headset with additional features. Note that these features will only be added if you pair your headset with the PS3™ system using a USB cable. If your headset is paired using Bluetooth discovery mode, none of these additional features will be available on your headset. In this case, you can only use your headset in the same way as a standard Bluetooth headset.

1. Check that the PS3™ system is turned on.
2. Insert the mini-B connector of the supplied USB cable directly into the USB connector on your headset, and insert the other end of the cable into a USB connector on the PS3™ system.

The power indicator on the headset lights up in solid green for two seconds to indicate that the headset and the PS3™ system have been successfully paired. If

pairing is not successful or times out, the headset's power indicator will remain lit in solid red for two seconds.

Pairing with the PS3™ system in Bluetooth discovery mode

1. Press and hold down the power button on your headset until the power indicator flashes alternately in green and red, indicating that the headset is in Bluetooth discovery mode.
2. On your PS3™ system's home menu, go to @ (Settings) > @ (Accessory Settings) > [Register Bluetooth® Device].
3. Select [Register Headset/Microphone/Headphones].
4. Select [Start Scanning].
Your PS3™ system begins to scan for the headset.
5. Select your headset from the list of devices that is displayed. When prompted for a pass key, enter "0000".
Your headset is now paired with the PS3™ system.

Pairing the headset with mobile phones

1. Press and hold down the power button on your headset until the power indicator flashes alternately in green and red, indicating that the headset is in Bluetooth discovery mode.
2. Turn on the Bluetooth feature on your mobile phone and start scanning for the headset. See your mobile phone's user guide for more information
3. Select your headset from the list of devices that is displayed. When prompted for a pass key, enter "0000".
Your headset is now paired with the mobile phone.

Turning the headset on and off

To turn on your headset:

Press and hold down the power button for about three seconds. The power indicator will be lit in solid green to indicate that the headset is turned on.

To turn off your headset:

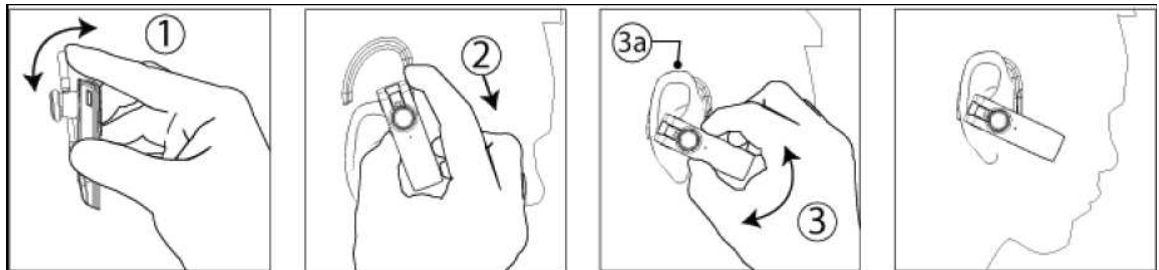
Press and hold down the power button for at least five seconds until the power indicator begins to flash in green to indicate that the headset is turning off.

*****Image of Bluetooth Headset with focus on Power Button – The image needs to be labeled and the green LED needs to be shown lit up*****



Wearing the headset

1. Gently push open the ear clip.
2. While holding the ear clip open, slide it behind your ear.
3. Adjust the headset until it fits comfortably on your ear.
 - 3a. Change the hook shape of the ear clip to maximize comfort.



Basic operations

Basic operations for the headset are described below.

Operation	Action
Turn on	Press and hold down the power button for about three seconds.
Turn off	Press and hold down the power button for at least five seconds.
Mute sound	Press the mic muting button.
Raise volume	Press the volume + button.
Lower volume	Press the volume – button.