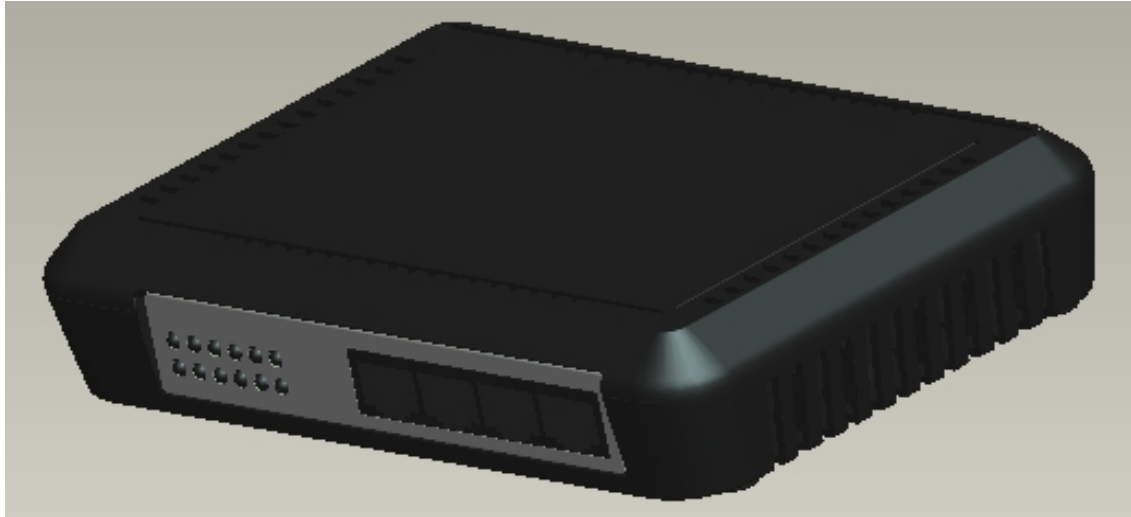


4 Port 10/100/1000M POE Repeater Ethernet Switch



PE054

Description

PE054 is 4 ports Giga POE (Power over Ethernet) Repeater Ethernet switch, it fits completely IEEE802.3af.

PE054 is the perfect accessory to increase your POE network performance. It has a port PD (Power Device); a port PSE (Power Sending Equipment), two ports standards of, Its PD port receives all power from the Power Sending Equipment. It does not require external power adapter, more flexibility to the network deployment.

Features

- Supports PoE IEEE802.3af compliant
- Supports IEEE802.3x flow control for Full-duplex Mode and backpressure for Half-duplex Mode
- 8K entry MAC address table of the SW-054-PR with auto-learning and auto-aging
- LED indicators for monitoring PD , PSE , Link / Activity and 1000M speed

Specification

Model	SW-054-PR	
Standards	IEEE802.3af IEEE802.3x	
Network Media (Cable)	10BASE-T:UTP category 3,5 cable(maximum100m) 100BASE-T: UTP category 3,5 cable (maximum 100m)	
Number of Ports	4 x 10/100/1000Mbps Auto-Negotiation ports	
LED indicators	10/100/1000M	Link/Act 1000M speed
	Other	PD PSE
Transfer Method	Store-and-Forward	
Switching Capacity	4.8G	
MAC Address Learning	Automatically learning, automatically Update 8K	
Frame Filtering and Forward Rate	148800pps	
Dimensions (W × D × H)	165*110*31 mm	
Environment	Operating Temperature: 0℃ - 40℃ Storage Temperature: -40℃ - 70℃ Operating Humidity: 10%~90% non-condensing Storage humidity: 5%~90% non-condensing	
Gross Weight		
Net weight		
Qty		
Certificate	CE, FCC	

FCC Notice

This device complies with Part 15 of the FCC Rules. Operation is subject to the following two conditions:

(1) this device may not cause harmful interference, and (2) this device must accept any interference received, including interference that may cause undesired operation.

NOTE 1: This equipment has been tested and found to comply with the limits for a Class B digital device, pursuant to part 15 of the FCC Rules. These limits are designed to provide reasonable protection against harmful interference in a residential installation. This equipment generates, uses and can radiate radio frequency energy and, if not installed and used in accordance with the instructions, may cause harmful interference to radio communications. However, there is no guarantee that interference will not occur in a particular installation. If this equipment does cause harmful interference to radio or television reception, which can be determined by turning the equipment off and on, the user is encouraged to try to correct the interference by one or more of the following measures:

- Reorient or relocate the receiving antenna.
- Increase the separation between the equipment and receiver.
- Connect the equipment into an outlet on a circuit different from that to which the receiver is connected.
- Consult the dealer or an experienced radio/TV technician for help.

Any changes or modifications not expressly approved by the manufacturer could void the user's authority to operate the equipment.

NOTE 2: The manufacturer is not responsible for any radio or TV interference caused by unauthorized modifications to this equipment. Such modifications could void the user's authority to operate the equipment.