



TEST REPORT

No. 2009TAR013

for

Shenzhen Sang Fei Consumer Communications Co.,Ltd.

900/1800/1900 GSM/GPRS Mobile Phone

Type: Xenium X530

with

Hardware Version: PR1

Software Version: X530_N52109_0850D01_V02CN

Issued Date: Feb 17th, 2009

Note:

The test results in this test report relate only to the devices specified in this report. This report shall not be reproduced except in full without the written approval of TMC Beijing.

Test Laboratory:

DAR accreditation (DIN EN ISO/IEC 17025): No. DAT-P-114/01-01

FCC 2.948 Listed: No.733176

IC O.A.T.S listed: No.6629A-1

TMC Beijing, Telecommunication Metrology Center of Ministry of Information Industry

No. 52, Huayuan Bei Road, Haidian District, Beijing, P. R. China 100083.

Tel:+86(0)10-62303288-2105, Fax:+86(0)10-62304793 Email:welcme@emcite.com. www.emcite.com

©Copyright. All rights reserved by TMC Beijing.

CONTENTS

1. TEST LABORATORY.....	3
1.1. TESTING LOCATION.....	3
1.2. TESTING ENVIRONMENT.....	3
1.3. PROJECT DATA.....	3
1.4. SIGNATURE.....	3
2. CLIENT INFORMATION.....	4
2.1. APPLICANT INFORMATION.....	4
2.2. MANUFACTURER INFORMATION.....	4
3. EQUIPMENT UNDER TEST (EUT) AND ANCILLARY EQUIPMENT (AE).....	5
3.1. ABOUT EUT.....	5
3.2. INTERNAL IDENTIFICATION OF EUT USED DURING THE TEST.....	5
3.3. INTERNAL IDENTIFICATION OF AE USED DURING THE TEST.....	5
4. REFERENCE DOCUMENTS.....	6
4.1. REFERENCE DOCUMENTS FOR TESTING.....	6
5. LABORATORY ENVIRONMENT.....	6
6. SUMMARY OF TEST RESULTS.....	7
7. TEST EQUIPMENTS UTILIZED.....	7
ANNEX A: EUT PHOTOGRAPH.....	8
ANNEX B: MEASUREMENT RESULTS.....	18
ANNEX C: TEST LAYOUT.....	24

1. Test Laboratory

1.1. Testing Location

Company Name: TMC Beijing, Telecommunication Metrology Center of MII
Address: No 52, Huayuan beilu, Haidian District, Beijing,P.R.China
Postal Code: 100083
Telephone: 00861062303288
Fax: 00861062304793

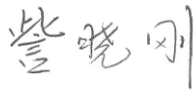
1.2. Testing Environment

Normal Temperature: 15-35°C
Relative Humidity: 20-75%

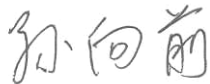
1.3. Project data

Testing Start Date: Dec 30th, 2008
Testing End Date: Jan 5th, 2009

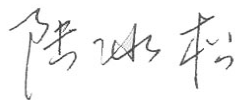
1.4. Signature



Zi Xiaogang
(Prepared this test report)



Sun Xiangqian
(Reviewed this test report)



Lu Bingsong
Deputy Director of the laboratory
(Approved this test report)

2. Client Information

2.1. Applicant Information

Company Name: Shenzhen Sang Fei Consumer Communications Co.,Ltd.
Address /Post: 11 Science & Technology Rd., Shenzhen Hi-tech Industrial Park,
Nanshan District, Shenzhen 518057
City: Shenzhen
Postal Code: 518057
Country: China
Telephone: 0755-26633217
Fax: 0755-26635272

2.2. Manufacturer Information

Company Name: Shenzhen Sang Fei Consumer Communications Co.,Ltd.
Address /Post: 11 Science & Technology Rd., Shenzhen Hi-tech Industrial Park,
Nanshan District, Shenzhen 518057
City: Shenzhen
Postal Code: 518057
Country: China
Telephone: 0755-26633217
Fax: 0755-26635272

3. Equipment Under Test (EUT) and Ancillary Equipment (AE)

3.1. About EUT

Description	900/1800/1900 GSM/GPRS Mobile Phone
Marketing name	Xenium X530
FCC ID	VQRCTX530
Power supply	Battery or Charger (AC Adaptor)

Note: Photographs of EUT are shown in ANNEX A of this test report. Components list, please refer to documents of the manufacturer; it is also included in the original test record of Telecommunication Metrology Center of MII of People's Republic of China.

3.2. Internal Identification of EUT used during the test

EUT ID*	SN or IMEI	HW Version	SW Version
N06	351675039999960	PR1	X530_N52109_0850D01_V02CN

3.3. Internal Identification of AE used during the test

AE ID*	Description	SN
AE1	Battery	FM330000910
AE2	Travel Adapter	/
AE3	Headset	/

AE1

Model	AB0920BWM
Manufacturer	SUCD(FU JIAN)Electronic CO.,LTD
Capacitance	920mAh
Nominal Voltage	3.7V

AE2

Model	DSA-5W-05 FUS 050065
Manufacturer	DeeVan Enterprise Co.,Ltd
Length of DC line	120cm

AE3

Model	ED-D867
Manufacturer	Shenzhen Sang Fei Consumer Communications Co.,Ltd.
Length of line	160cm

*AE ID: is used to identify the test sample in the lab internally.

4. Reference Documents

4.1. Reference Documents for testing

The following documents listed in this section are referred for testing.

Reference	Title	Version
FCC Part 15, Subpart B	Radio frequency devices	V 10.1.07
ANSI C63.4	Methods of Measurement of Radio-Noise Emissions from Low-Voltage Electrical and Electronic Equipment in the Range of 9 kHz to 40 GHz	2003

5. LABORATORY ENVIRONMENT

Semi-anechoic chamber (23 meters×17meters×10meters) did not exceed following limits along the EMC testing:

Temperature	Min. = 15 °C, Max. = 30 °C
Relative humidity	Min. = 30 %, Max. = 60 %
Shielding effectiveness	> 110 dB
Electrical insulation	> 10 kΩ
Ground system resistance	< 0.5 Ω
Normalised site attenuation (NSA)	< ±3.2 dB, 10 m distance, from 30 to 1000 MHz
Uniformity of field strength	Between 0 and 6 dB, from 80 to 2000 MHz

Control room did not exceed following limits along the EMC testing:

Temperature	Min. = 15 °C, Max. = 35 °C
Relative humidity	Min. =30 %, Max. = 60 %
Shielding effectiveness	> 110 dB
Electrical insulation	> 10 kΩ
Ground system resistance	< 0.5 Ω

Conducted chamber did not exceed following limits along the EMC testing:

Temperature	Min. = 15 °C, Max. = 30 °C
Relative humidity	Min. = 30 %, Max. = 60 %
Shielding effectiveness	> 110 dB
Electrical insulation	> 10 kΩ
Ground system resistance	< 0.5 Ω

Fully-anechoic chamber (6.8 meters×3.08 meters×3.53 meters) did not exceed following limits along the EMC testing:

Temperature	Min. = 15 °C, Max. = 30 °C
Relative humidity	Min. = 30 %, Max. = 60 %
Shielding effectiveness	> 110 dB
Electrical insulation	> 10 kΩ
Ground system resistance	< 0.5 Ω
Uniformity of field strength	Between 0 and 6 dB, from 80 to 2000 MHz

6. SUMMARY OF TEST RESULTS

Abbreviations used in this clause:	
P	Pass
NA	Not applicable
F	Fail

Clause	List	Clause in FCC rules	Verdict
1	Radiated Emission	15.109(a)	P
2	Conducted Emission	15.107(a)	P

7. Test Equipments Utilized

NO.	Description	TYPE	SERIES NUMBER	MANUFACTURER	CAL DUE DATE
1	Test Receiver	ESS	847151/015	R&S	2009-10-30
2	Test Receiver	ESI40	831564/002	R&S	2010-2-11
3	BiLog Antenna	3142B	9908-1403	EMCO	2010-1-16
4	BiLog Antenna	VUL9163	9163 175	Schwarzbeck	2009-9-19
5	Signal Generator	SMT06	831285/005	R&S	2009-12-26
6	Signal Generator	SMP04	100070	R&S	2009-4-20
7	LISN	ESH2-Z5	829991/012	R&S	2009-9-13
8	Spectrum Analyzer	FSU26	200030	R&S	2009-6-18
9	Universal Radio Communication Tester	CMU200	100680	R&S	2009-8-23
10	Dual-Ridge Waveguide Horn Antenna	3115	9906-5827	EMCO	2009-3
11	Dual-Ridge Waveguide Horn Antenna	3116	2663	EMCO	2009-3
12	Dual-Ridge Waveguide Horn Antenna	3116	2661	EMCO	2009-3
13	Climatic chamber	SH-241	92003546	ESPEC	2009-5-15

ANNEX A: EUT photograph

External Photo



Mobile Phone



Mobile Phone



Mobile Phone



Mobile Phone



Charger (AC/DC Adapter)



Label of Charger (AC/DC Adapter)



Battery



Battery



Headset

Internal Photo



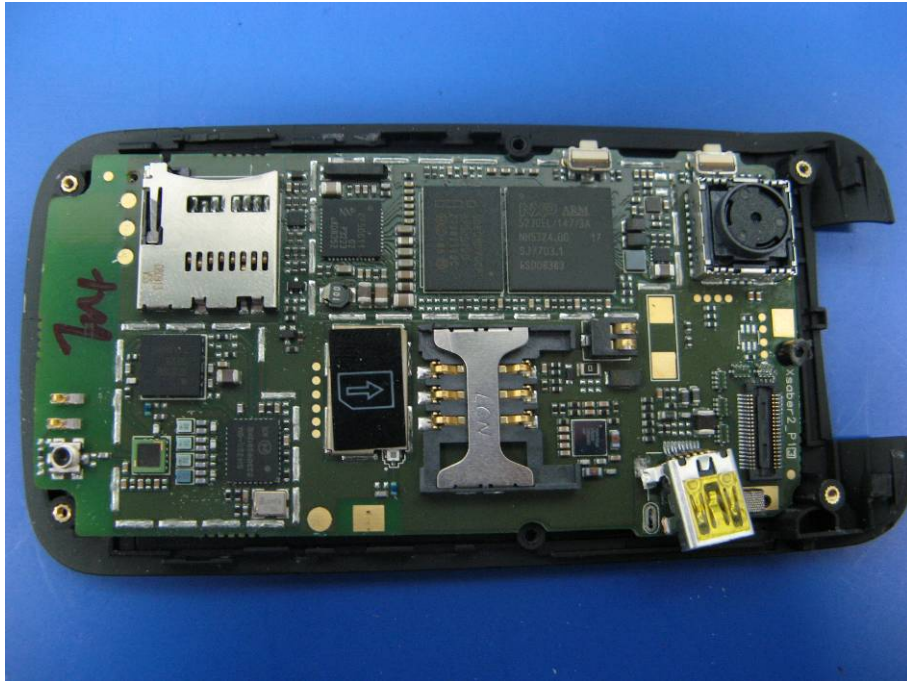
Mobile phone Disassembly



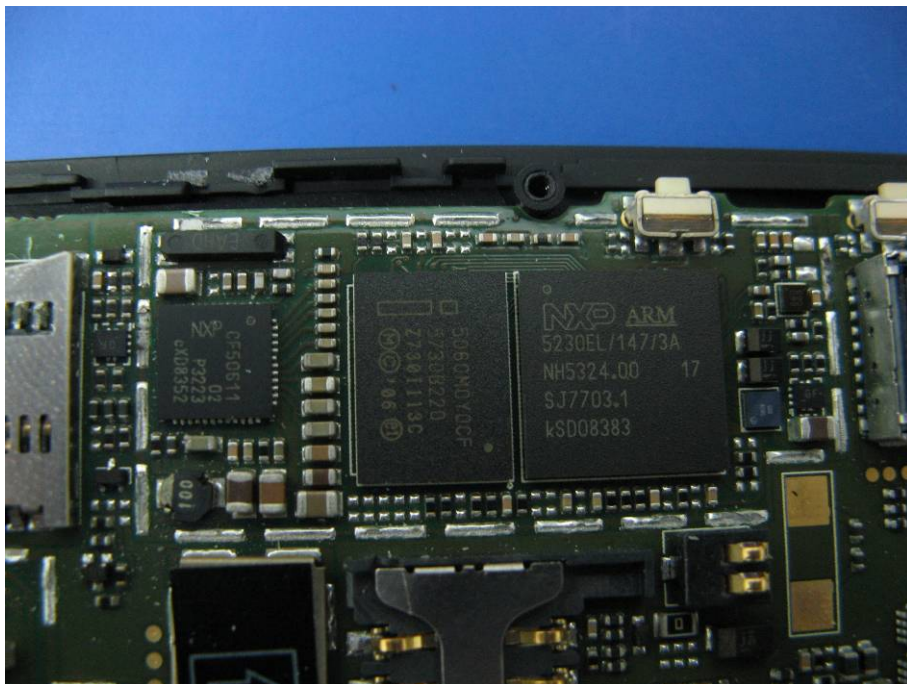
Mobile phone Disassembly



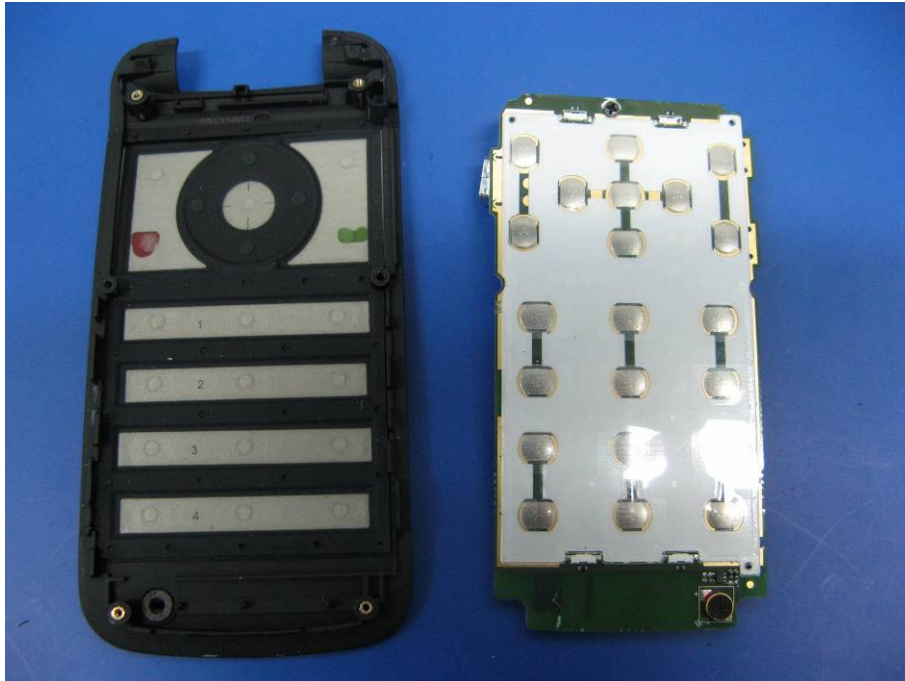
Mobile phone Disassembly



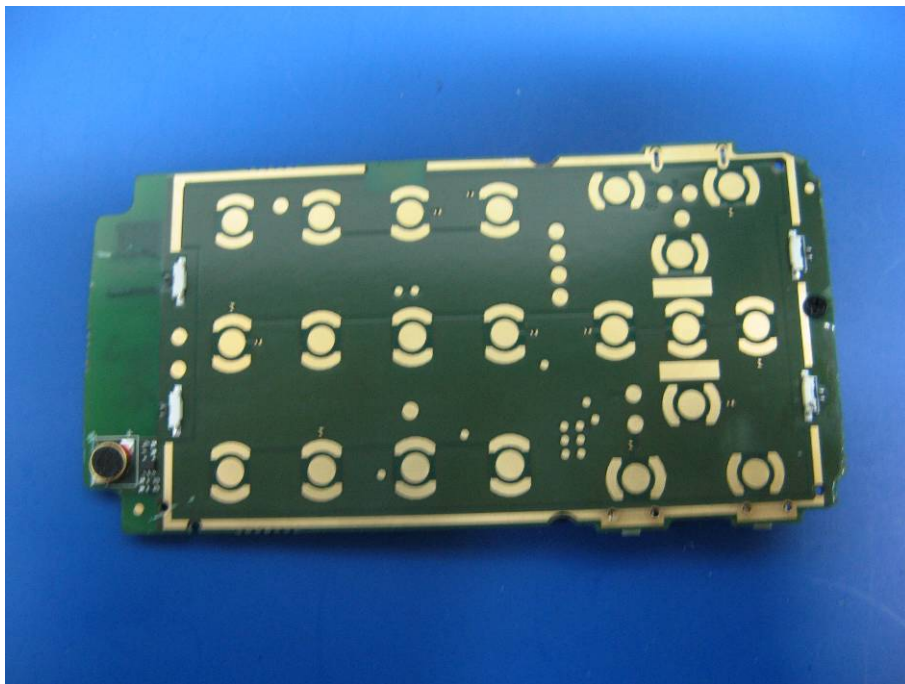
Mobile phone Disassembly



Mobile phone Disassembly



Mobile phone Disassembly



Mobile phone Disassembly



Mobile phone Disassembly



Mobile phone Disassembly



Mobile phone Disassembly



Mobile phone Disassembly

ANNEX B: MEASUREMENT RESULTS

B.1 Radiated Emission (§15.109(a))

B.1.1 Method of measurement

The field strength of radiated emissions from the unintentional radiator (USB mode of MS and charging mode of MS) at a distance of 3 meters is tested. Tested in accordance with the procedures of ANSI C63.4 – 2003, section 8.3. The test set-up please refers to Annex C.1.

B.1.2 EUT Operating Mode:

The MS is operating in the USB mode and charging mode. During the test MS is connected to a laptop via a USB cable in the case of USB mode and is connected to a charger in the case of charging mode. The model of the laptop is IBM T42 2373-M6C, and the serial number of the laptop is 99-FV6P2. The software is used to let the laptop keep on copying data to MS, reading and erasing the data after copy action was finished.

B.1.3 Measurement Limit

Frequency of emission (MHz)	Field strength (microvolts/meter)
30-88	100
88-216	150
216-960	200
Above 960	500

B.1.4 Measurement Results
Charging Mode

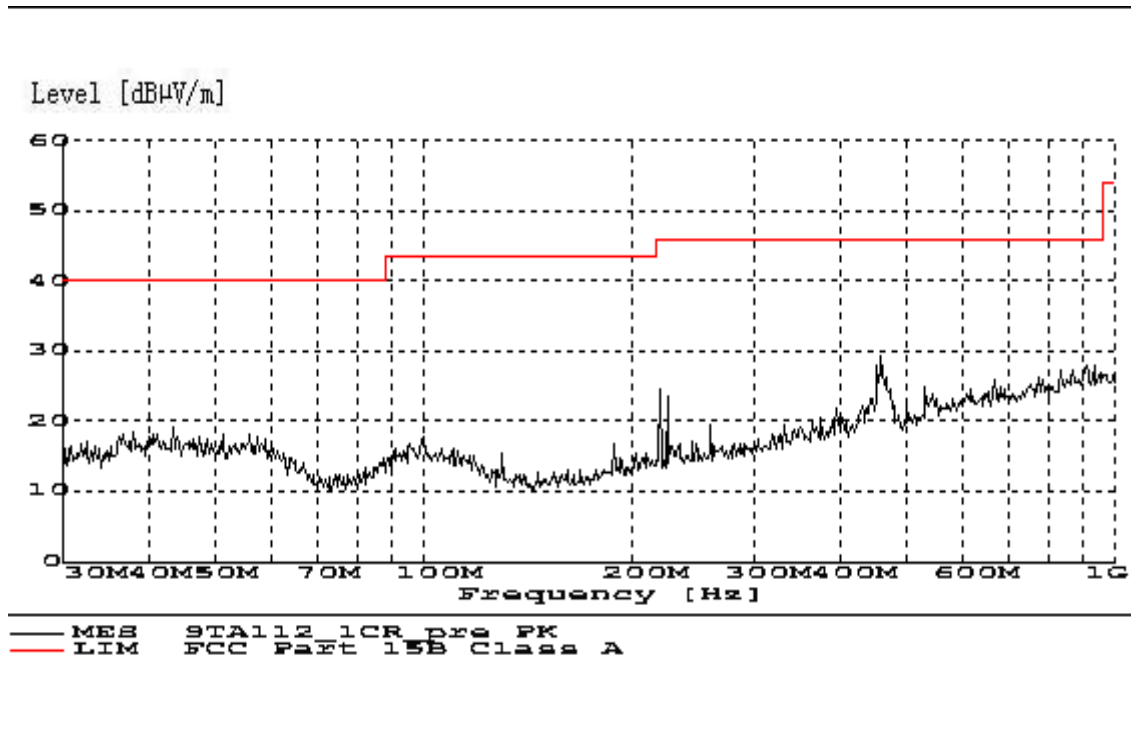


Figure B.1 Radiated Emission from 30MHz to 1GHz

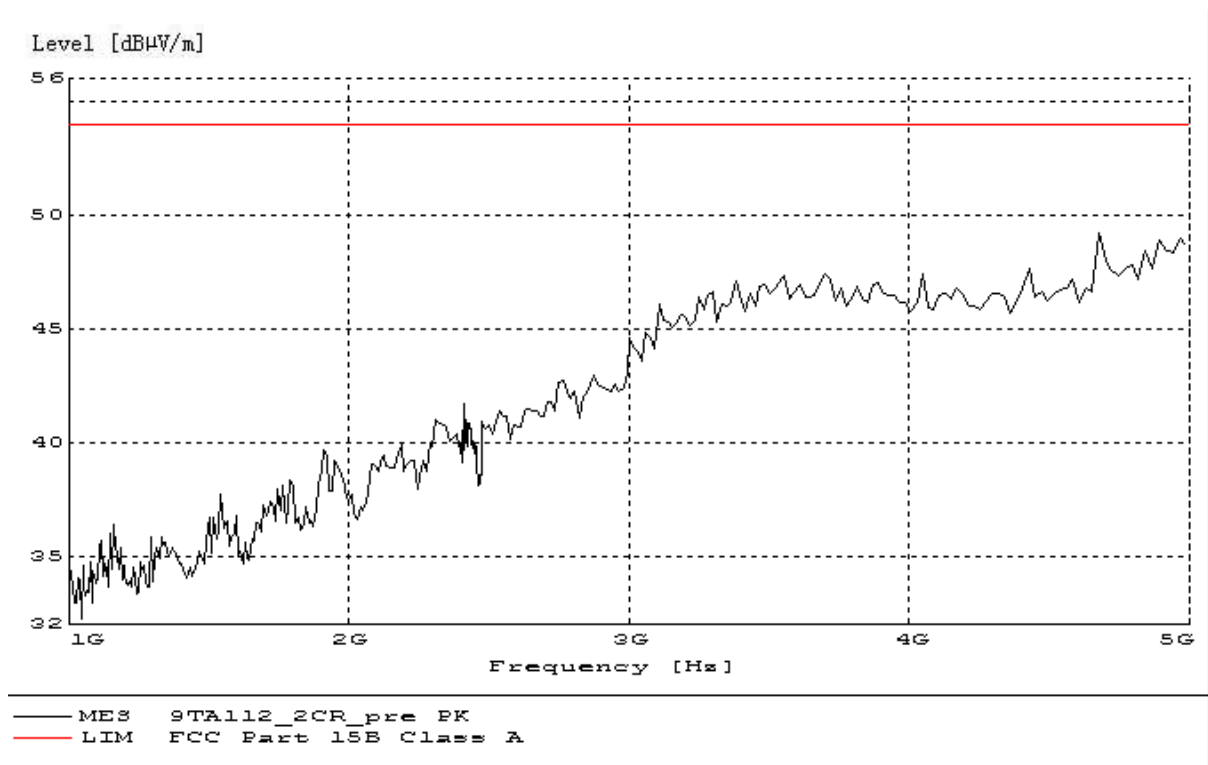


Figure B.2 Radiated Emission from 1GHz to 5GHz

USB Mode

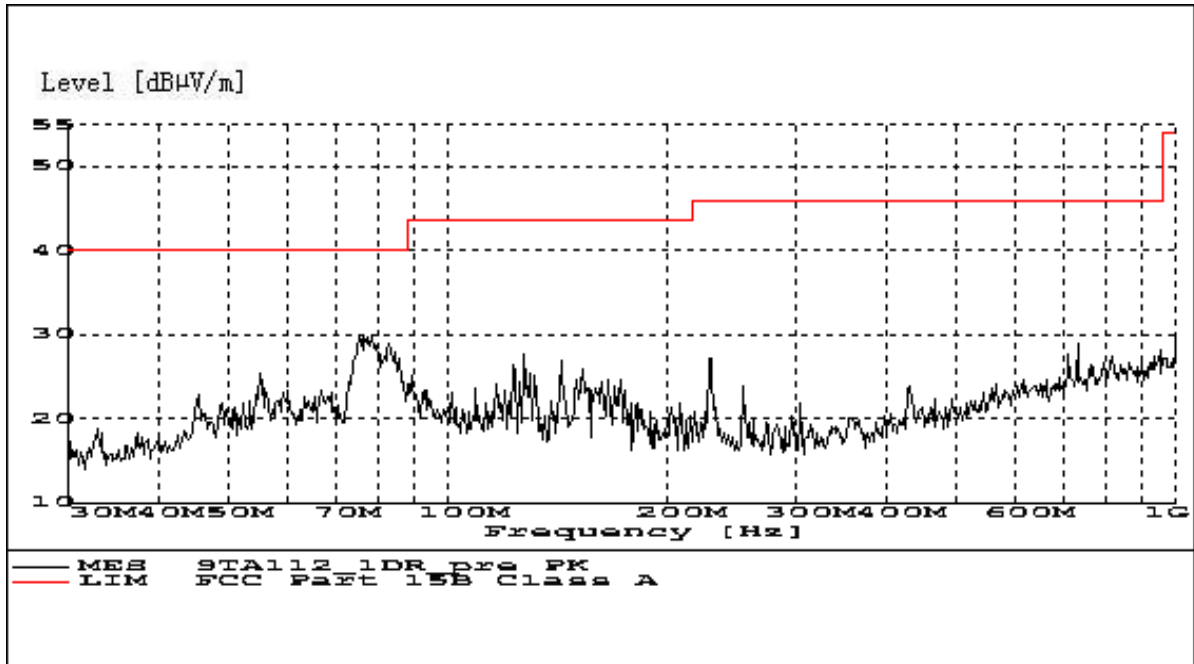


Figure B.3 Radiated Emission from 30MHz to 1GHz

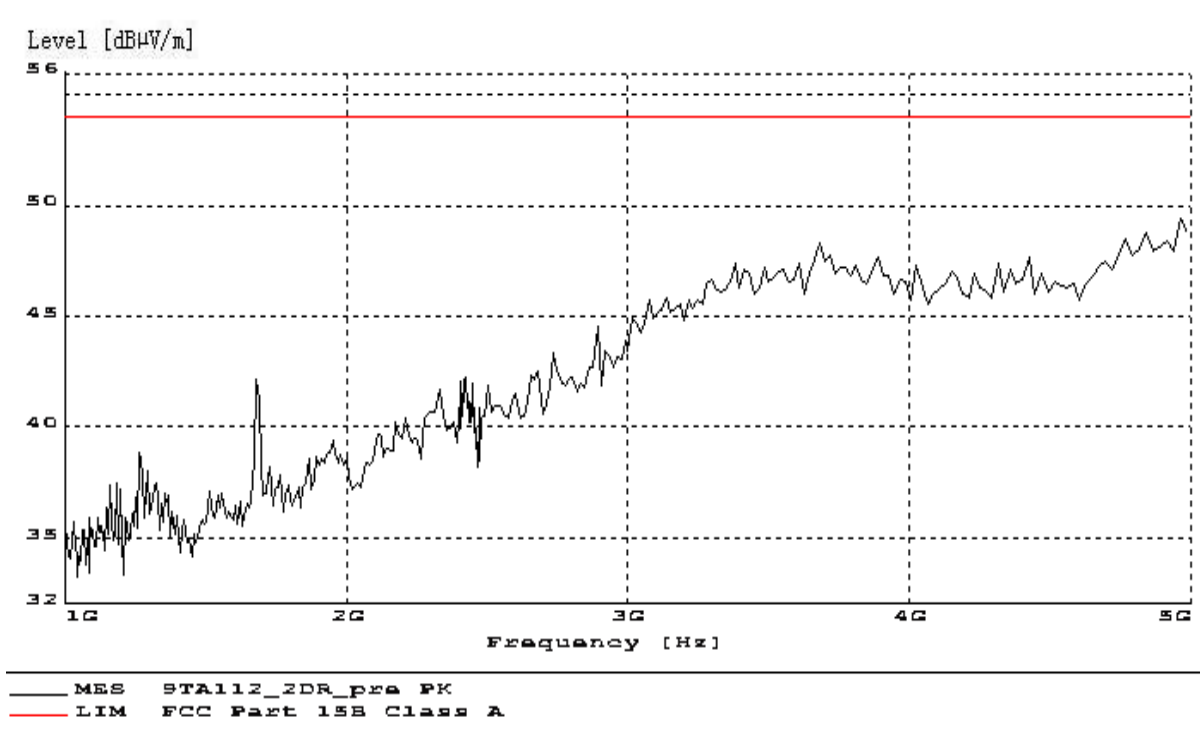


Figure B.4 Radiated Emission from 1GHz to 5GHz

B.2 Conducted Emission (§15.107(a))

B.2.1 Method of measurement

For equipment that is designed to be connected to the public utility (AC) power line, the radio frequency voltage that is conducted back onto the AC power line on any frequency or frequencies within the band 150kHz to 30MHz shall not exceed the limits. Tested in accordance with the procedures of ANSI C63.4 – 2003, section 7.2. The test set-up please refers to Annex C.2.

B.2.2 EUT Operating Mode:

The MS is operating in the USB mode and charging mode. During the test MS is connected to a laptop via a USB cable in the case of USB mode and is connected to a charger in the case of charging mode. The model of the laptop is IBM T42 2373-M6C, and the serial number of the laptop is 99-FV6P2. The software is used to let the laptop keep on copying data to MS, reading and erasing the data after copy action was finished.

B.2.3 Measurement Limit

Frequency of emission (MHz)	Conducted limit (dB μ V)	
	Quasi-peak	Average
0.15-0.5	66 to 56*	56 to 46*
0.5-5	56	46
5-30	60	50

*Decreases with the logarithm of the frequency

B.2.4 Test Condition in charging mode

Voltage (V)	Frequency (Hz)
110	60

B.2.4 Measurement Results
Charging Mode

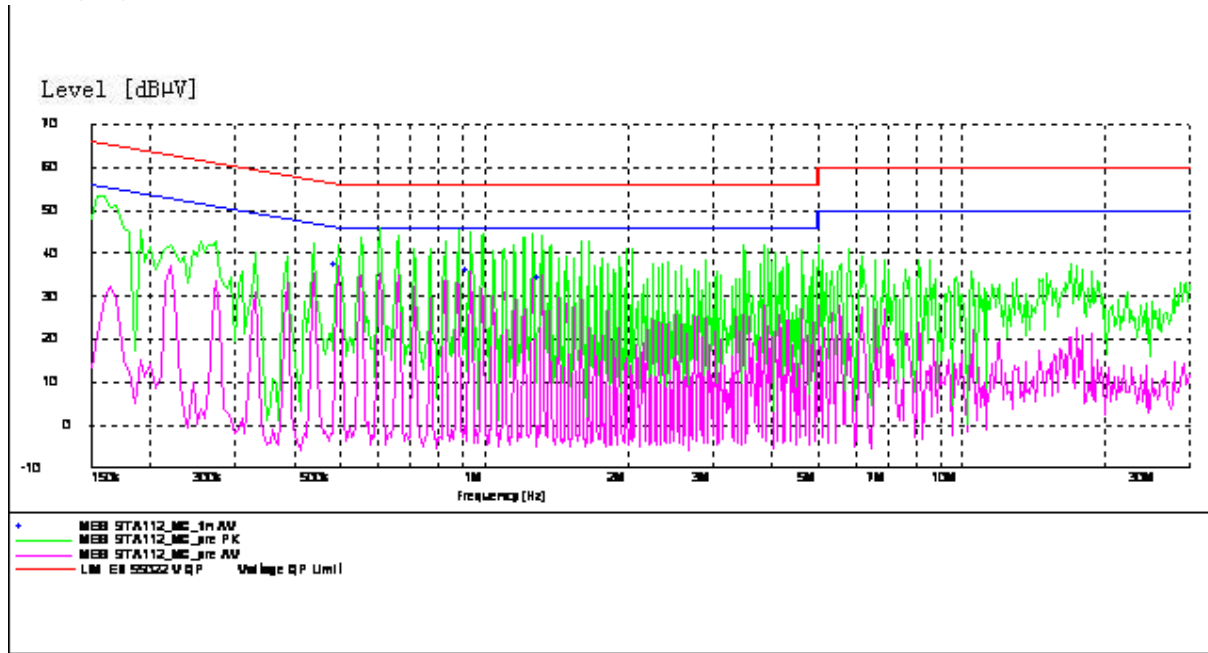


Figure B.5 Conducted Emission

MEASUREMENT RESULT: "9TA112_MC_fin AV"

Frequency MHz	Level dBµV	Transd dB	Limit dBµV	Margin dB	Line	PE
0.495000	37.00	10.1	46	9.1	L1	FLO
0.935000	36.00	10.1	46	10.0	L1	FLO
1.320000	34.30	10.1	46	11.7	L1	FLO

USB Mode

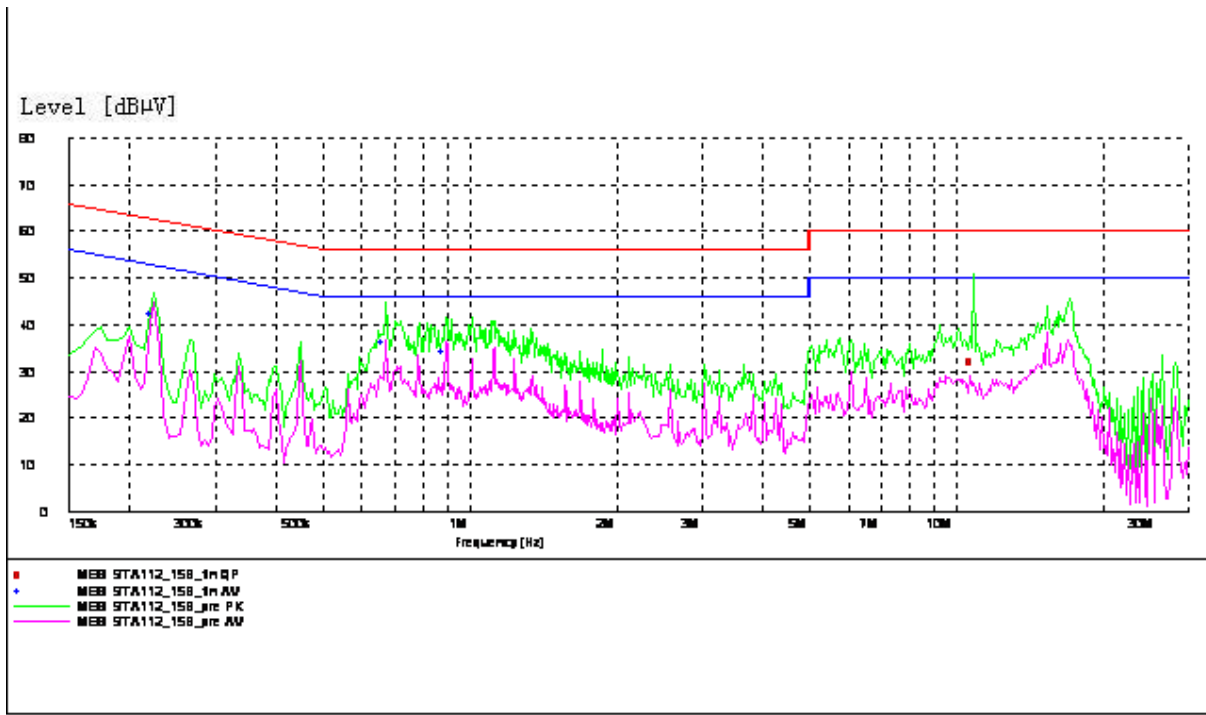


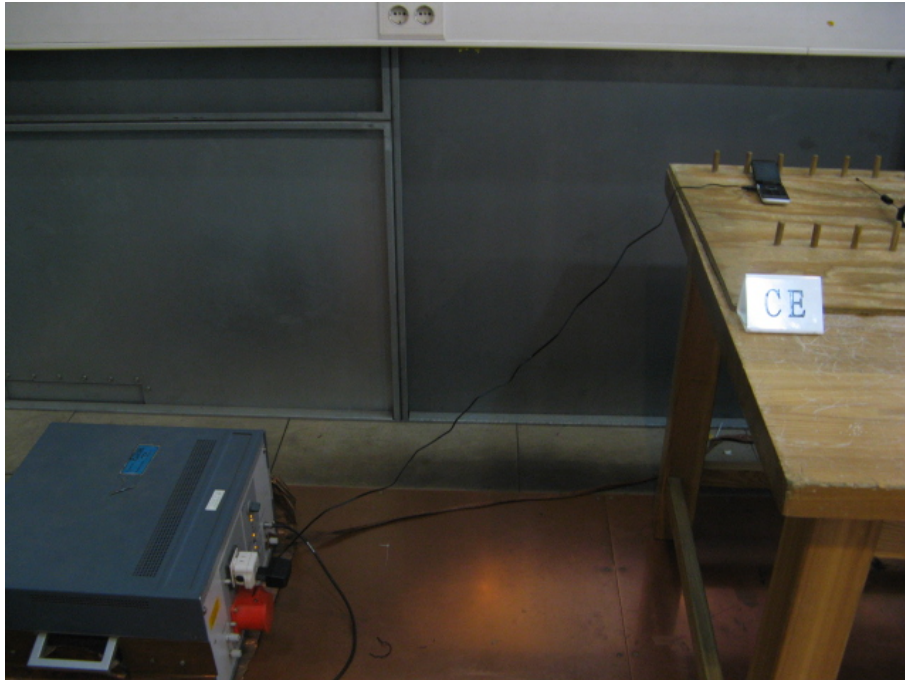
Figure B.6 Conducted Emission

MEASUREMENT RESULT: "9TA112_15B_fin QP"

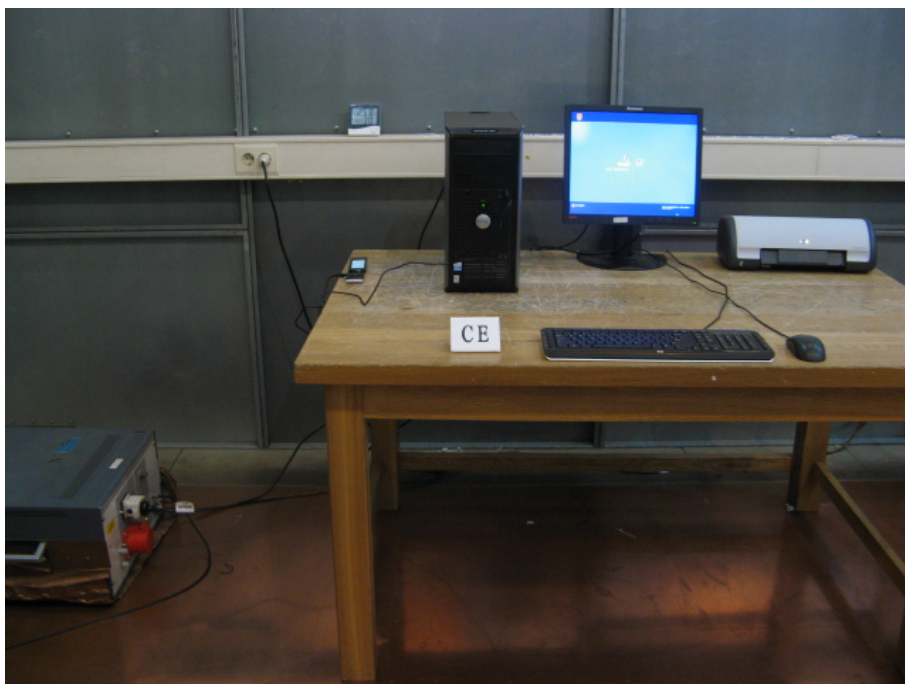
Frequency MHz	Level dBµV	Transd dB	Limit dBµV	Margin dB	Line	PE
10.830857	32.20	10.2	60	27.8	N	FLO

MEASUREMENT RESULT: "9TA112_15B_fin AV"

Frequency MHz	Level dBµV	Transd dB	Limit dBµV	Margin dB	Line	PE
0.225000	42.20	10.1	53	10.5	L1	FLO
0.675000	36.50	10.1	46	9.5	N	FLO
0.895000	34.30	10.1	46	11.7	N	FLO

ANNEX C: TEST LAYOUT

Pic C-1 Conducted Emission (Charging Mode)



Pic C-2 Conducted Emission (USB Mode)



Pic C-3 Radiated Spurious Emission (Charging Mode)



Pic C-4 Radiated Spurious Emission (USB Mode)

*****END OF REPORT*****