

## Appendix A. Test Photos

## 1. Photographs of Conducted Emissions Test Configuration

For Bluetooth 2.1 + EDR:

Test Mode: Mode 3

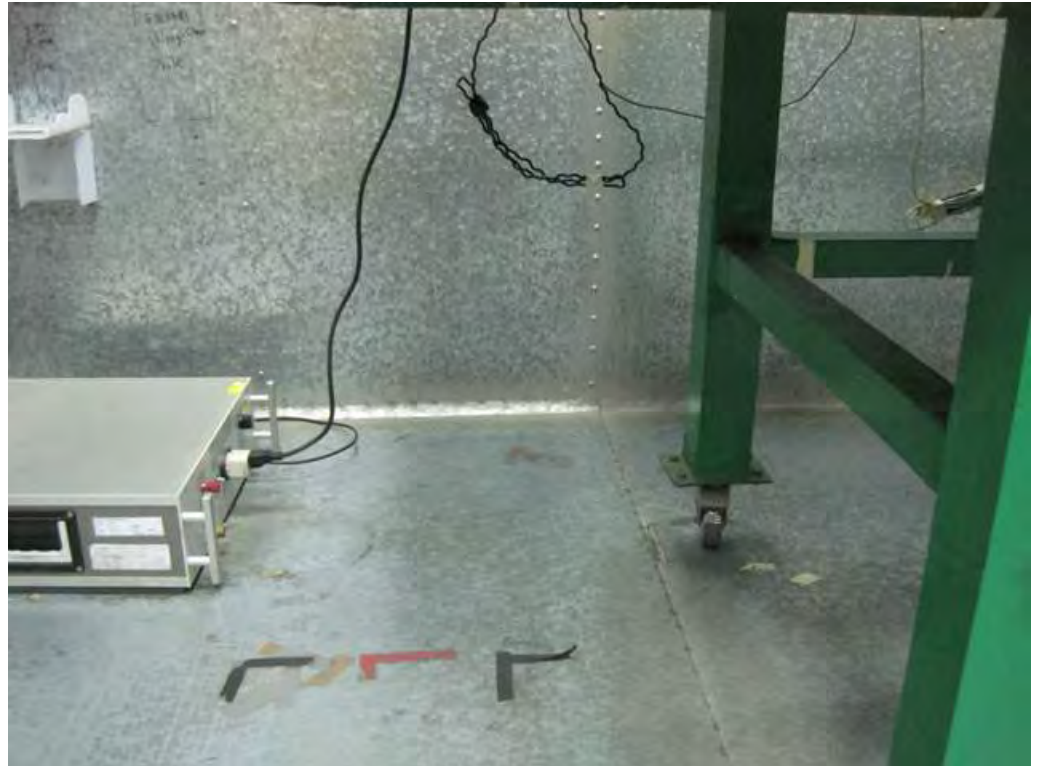
FRONT VIEW



REAR VIEW



SIDE VIEW



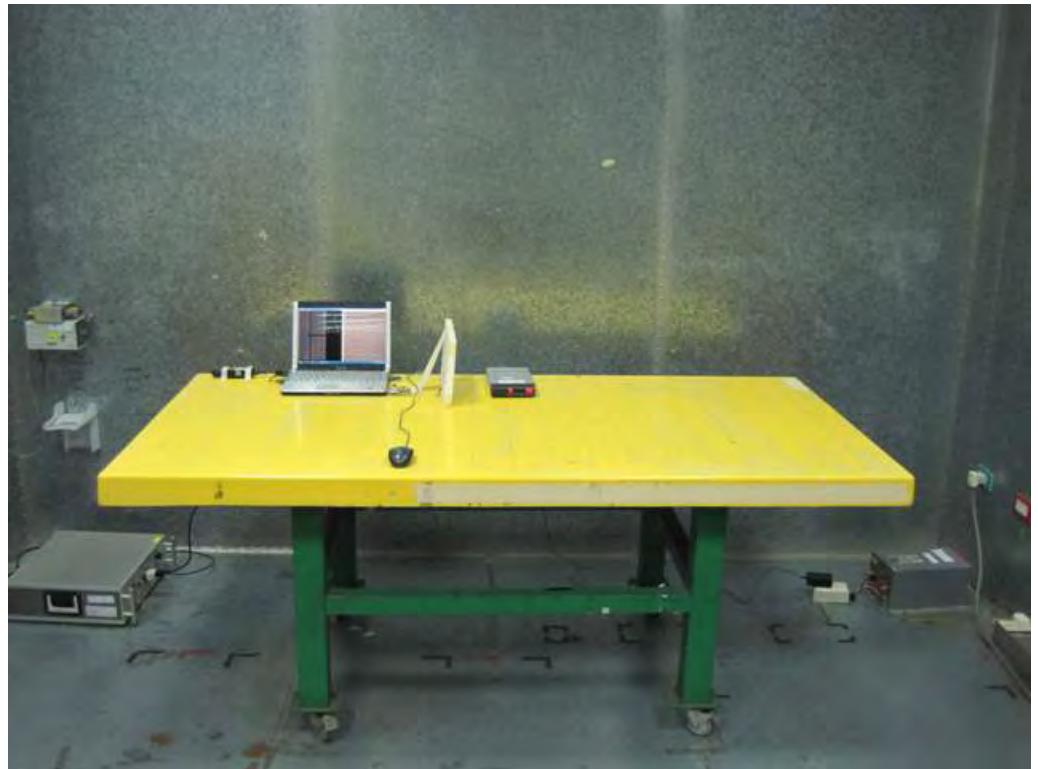
SIDE VIEW





For Bluetooth 4.0:  
Test Mode: Mode 2

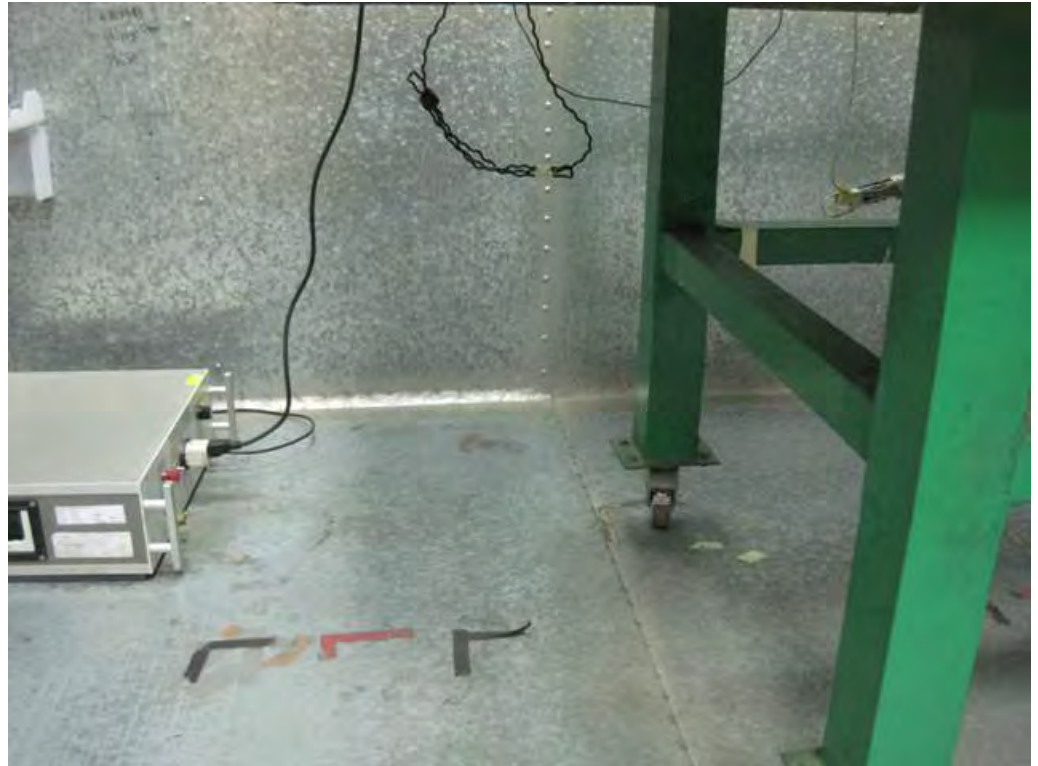
FRONT VIEW



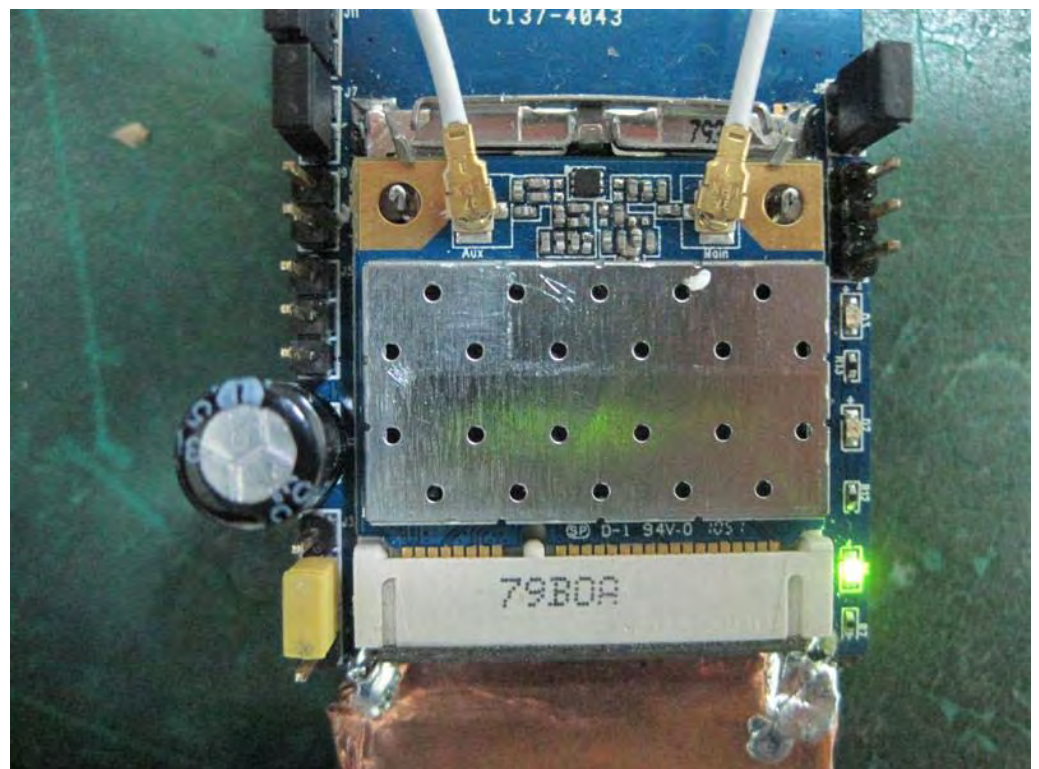
REAR VIEW



SIDE VIEW



SIDE VIEW





## 2. Photographs of Radiated Emissions Test Configuration

Test Configuration: 9kHz ~30MHz

FRONT VIEW



REAR VIEW

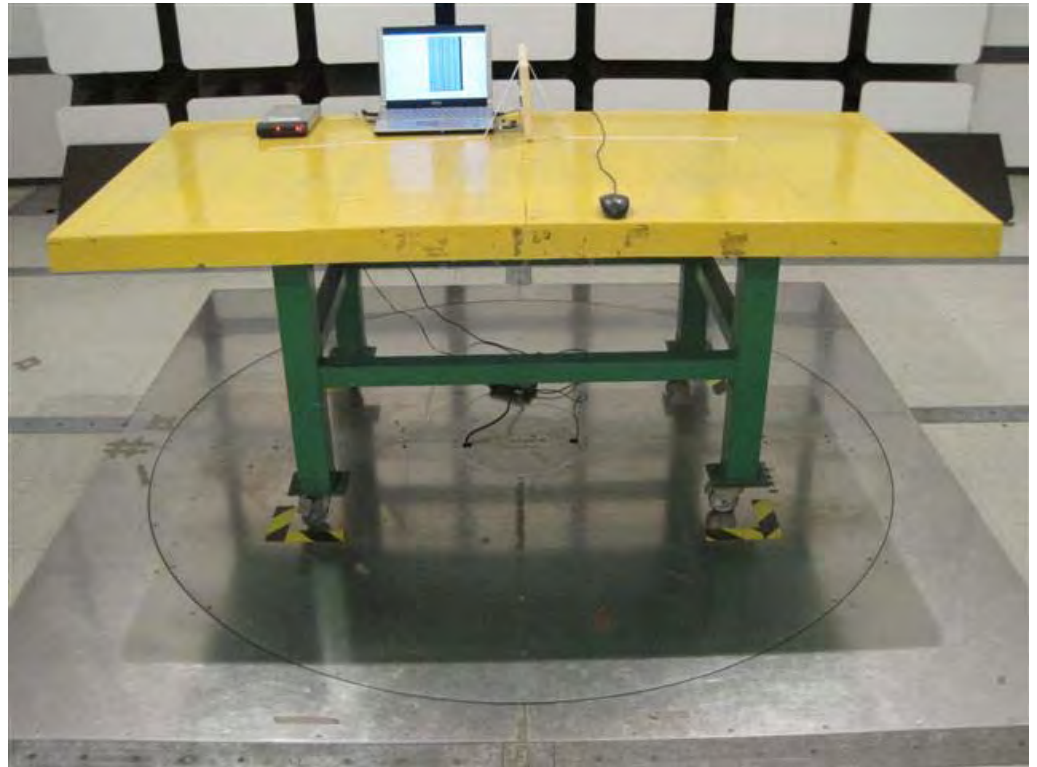


Test Configuration: 30MHz~1GHz

For Bluetooth 2.1 + EDR:

Test Mode: Mode 1 with Ant. 1 (PIAF Antenna)

FRONT VIEW



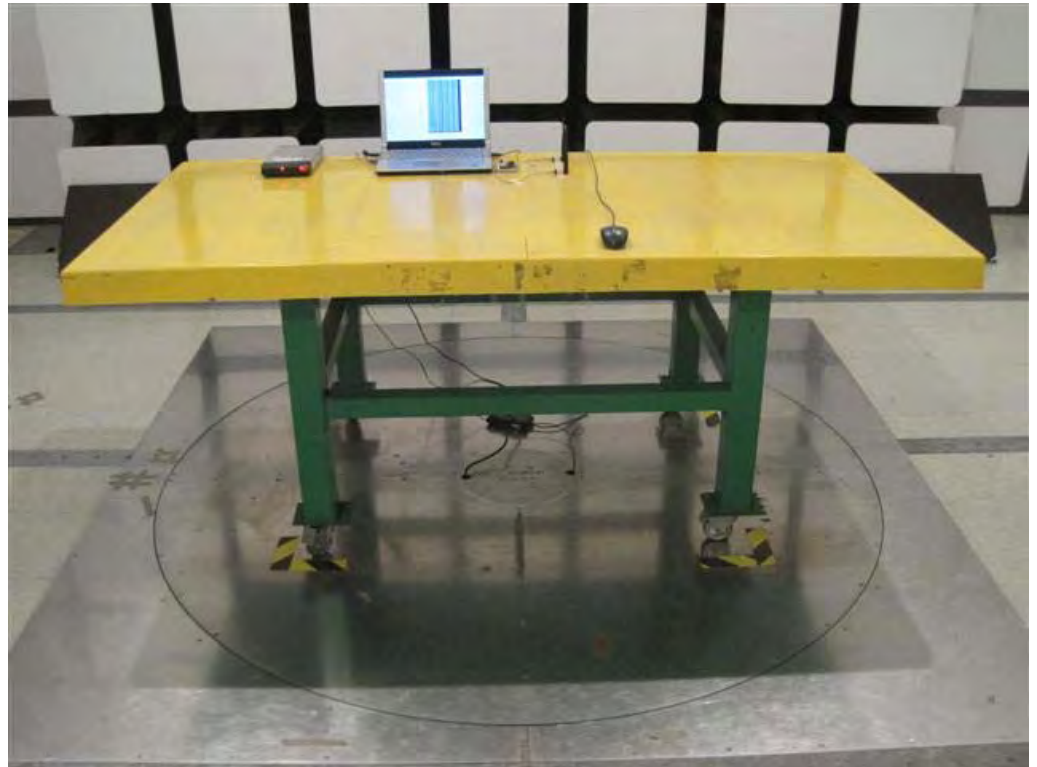
REAR VIEW



For Bluetooth 2.1 + EDR:

Test Mode: Mode 1 with Ant. 2 (Dipole Antenna)

FRONT VIEW



REAR VIEW

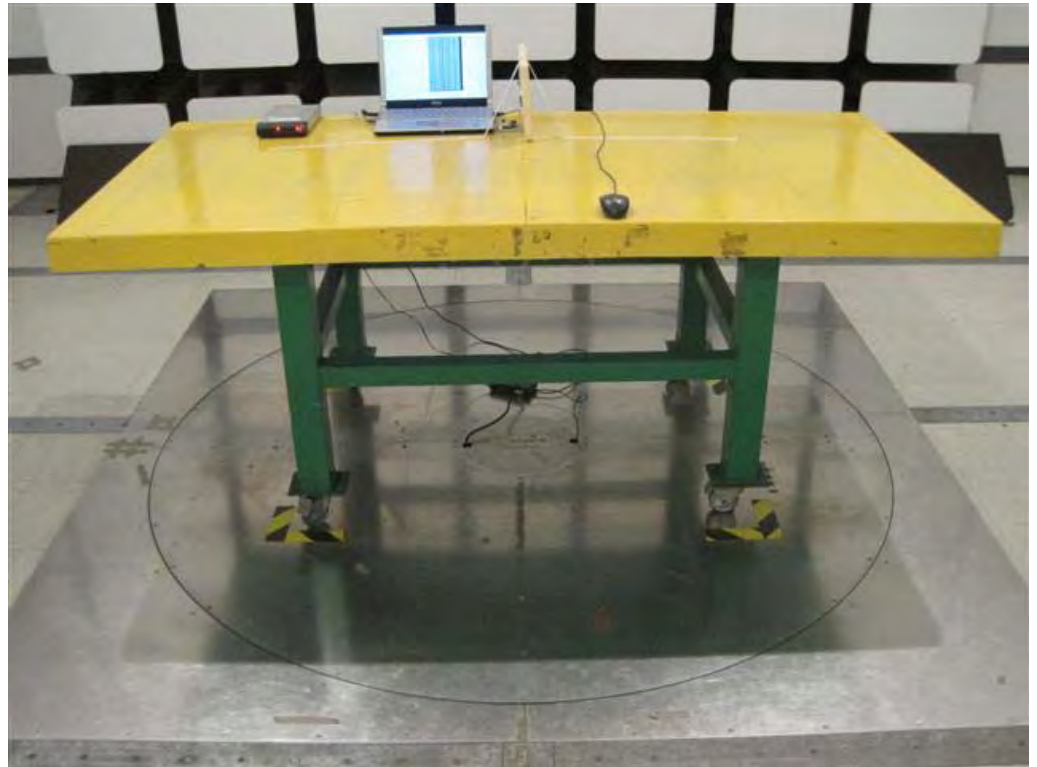




For Bluetooth 4.0:

Test Mode: Mode 2 with Ant. 1 (PIAF Antenna)

FRONT VIEW



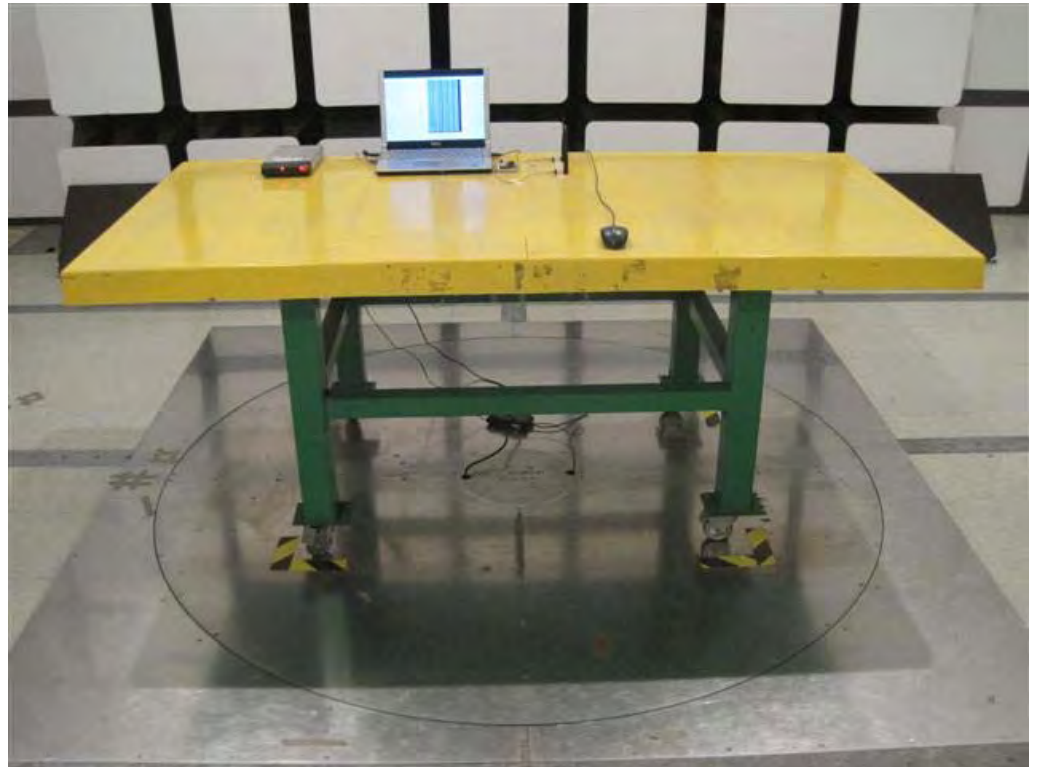
REAR VIEW



For Bluetooth 4.0:

Test Mode: Mode 2 with Ant. 2 (Dipole Antenna)

FRONT VIEW



REAR VIEW

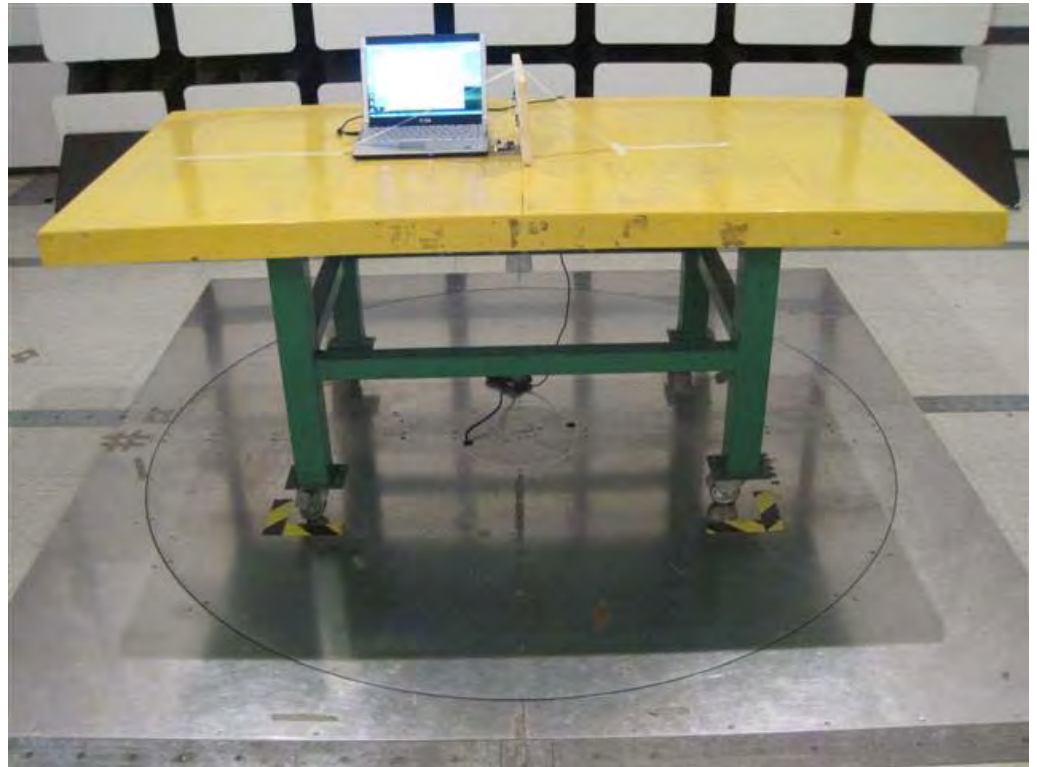


Test Configuration: Above 1GHz

For Bluetooth 2.1 + EDR:

Configuration 2 with Ant. 1 (PIFA Antenna)

FRONT VIEW

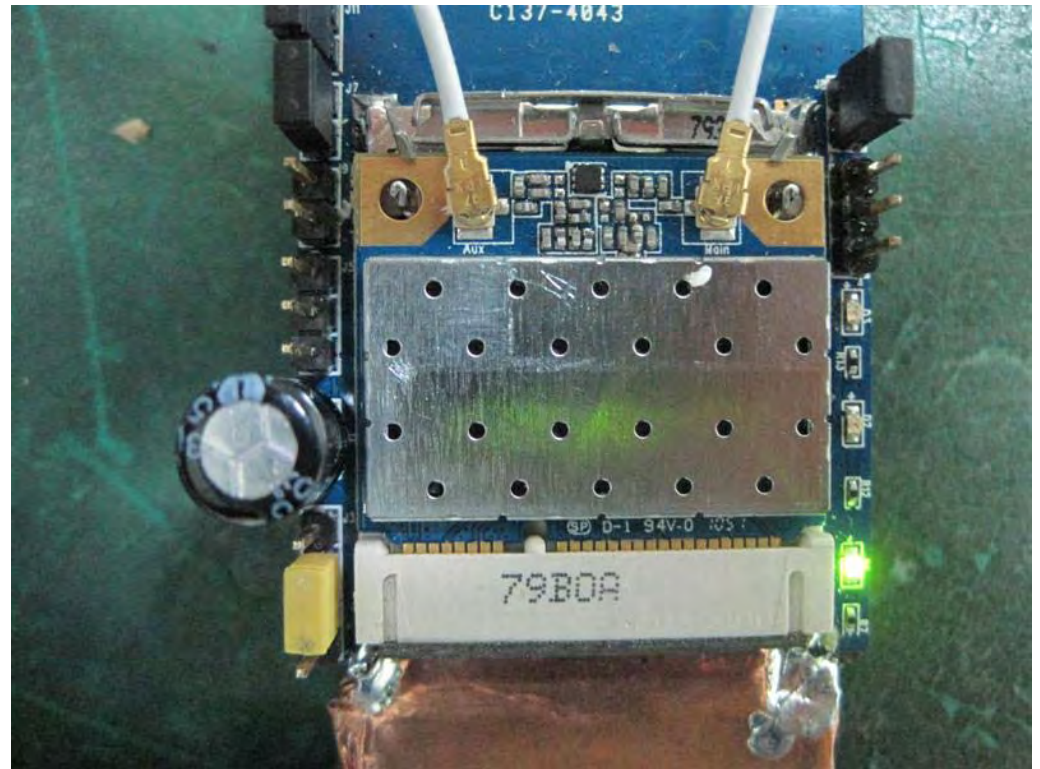


REAR VIEW



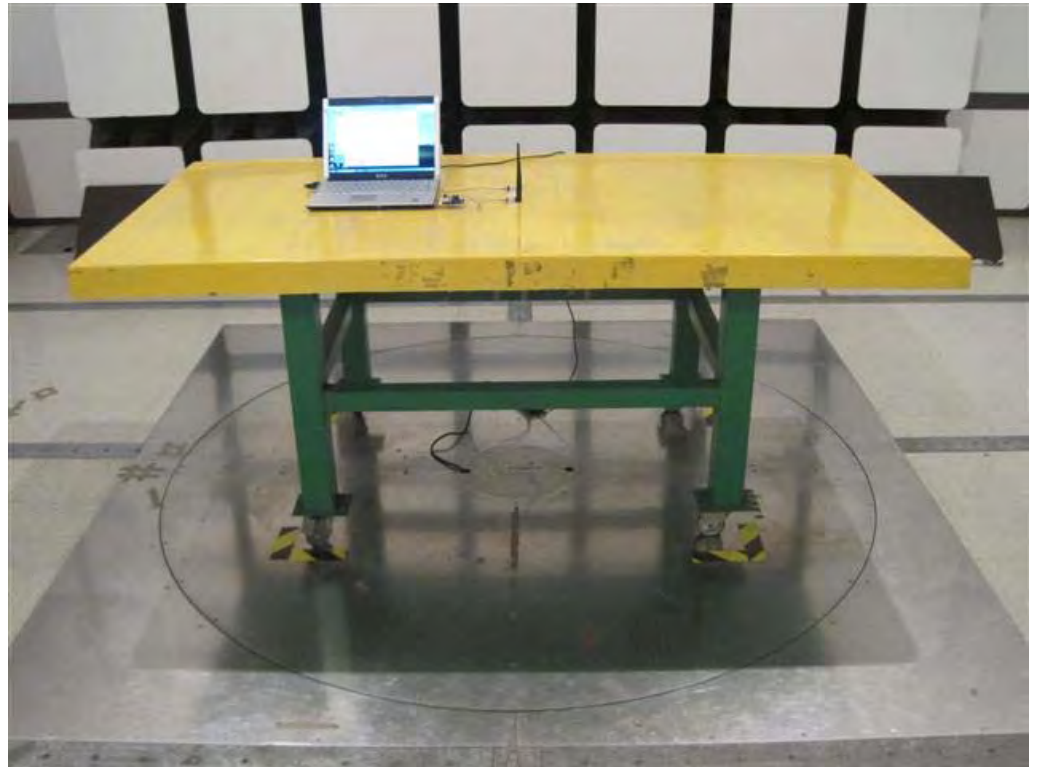


SIDE VIEW



Configuration 2 with Ant. 2 (Dipole Antenna)

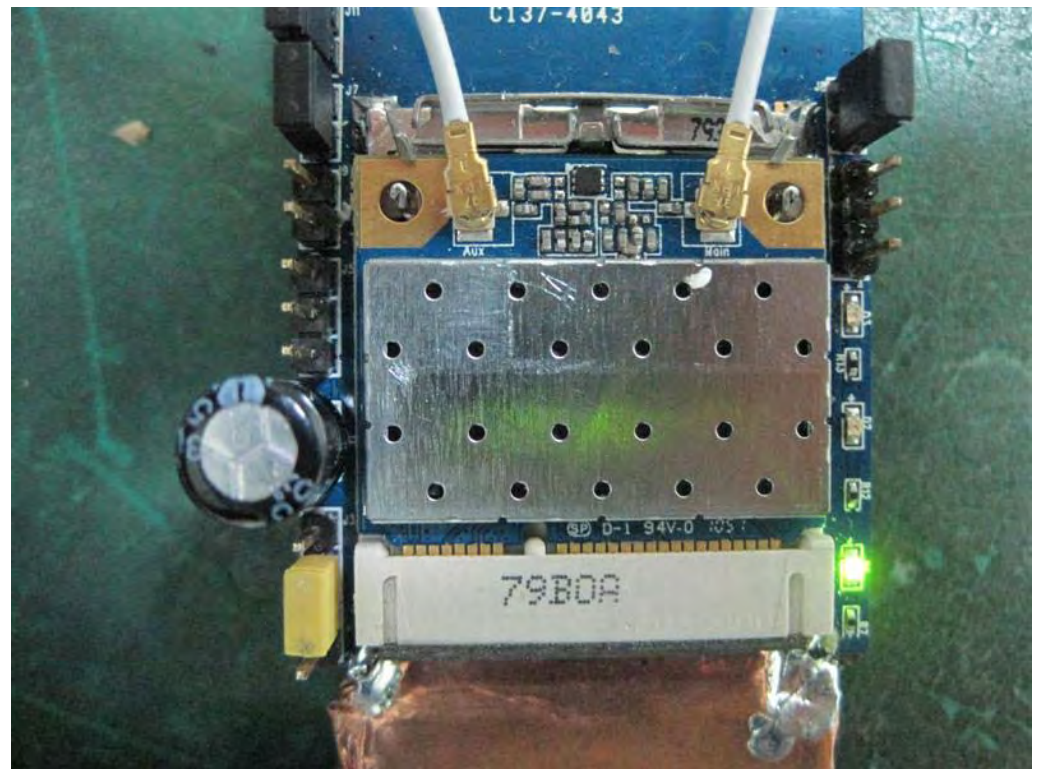
FRONT VIEW



REAR VIEW



SIDE VIEW

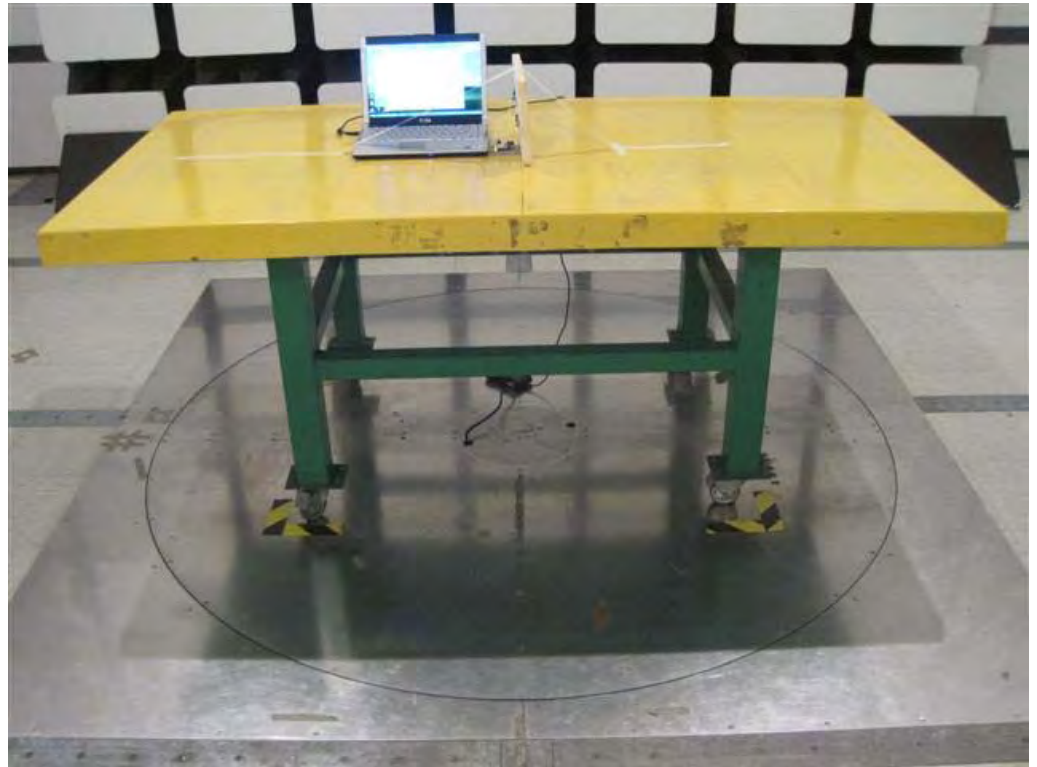




For Bluetooth 4.0:

Configuration 2 with Ant. 1 (PIFA Antenna)

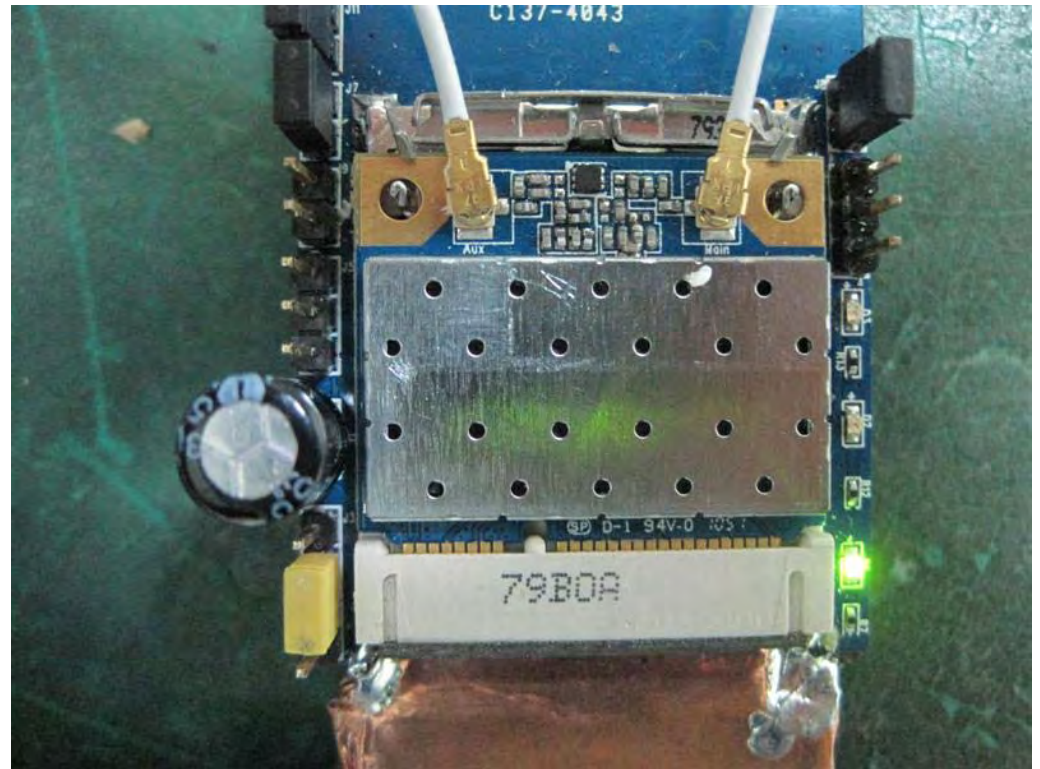
FRONT VIEW



REAR VIEW



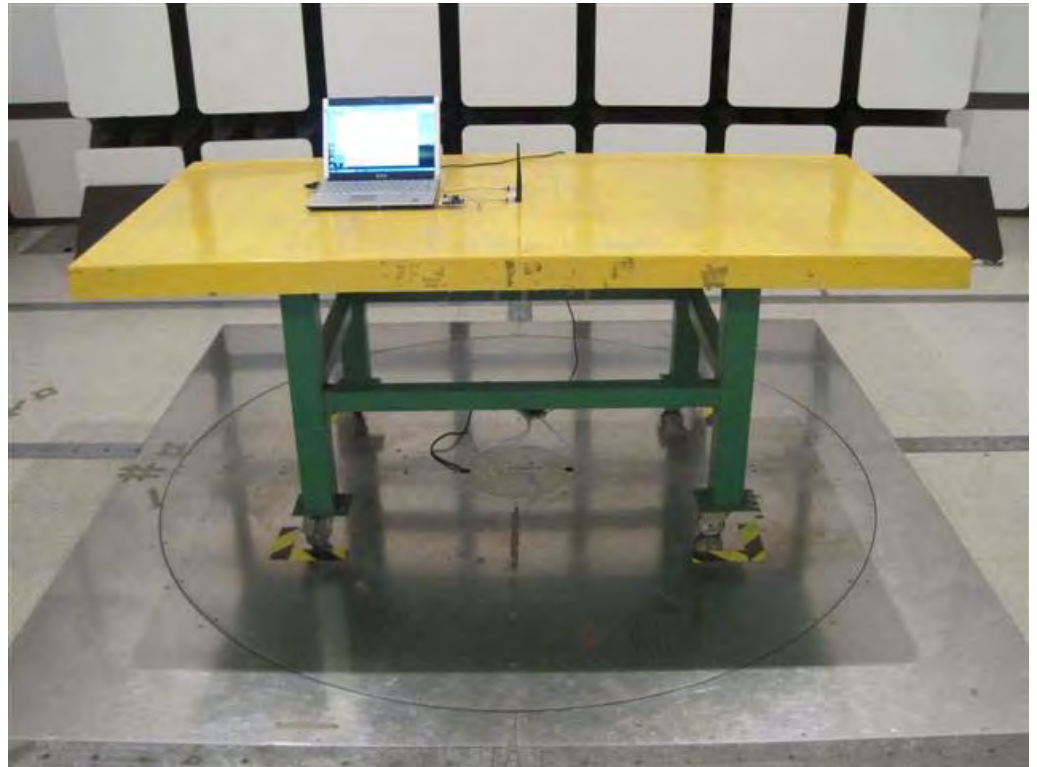
SIDE VIEW



For Bluetooth 4.0:

Configuration 2 with Ant. 2 (Dipole Antenna)

FRONT VIEW



REAR VIEW





SIDE VIEW

