

FCC STATEMENT

This equipment has been tested and found to comply with the limits for Class B digital device, pursuant to part 15 of the FCC Rules. These limits are designed to provide reasonable protection against harmful interference in a residential installation. This equipment generates, uses and can radiate radio frequency energy and, if not installed and used in accordance with the instructions, may cause harmful interference to radio communications. However, there is no guarantee that interference will not occur in a particular installation. If this equipment does cause harmful interference to radio or television reception, which can be determined by turning the equipment off and on, the user is encouraged to try to correct the interference by one or more of the following measures: • Reorient or relocate the receiving antenna • Increase the separation between the equipment and the receiver • Connect the equipment into an outlet on a circuit different from that to which the receiver is connected • Consult the dealer or an experienced radio/TV technician for help.

This device complies with part 15 of the FCC Rules. Operation is subject to the following two conditions:

1. This device may not cause harmful interference.
2. This device must accept any interference received, including interference that may cause undesired operation.

Changes or modifications not expressly approved by the party responsible for compliance could void the user's authority to operate the equipment.

In order to comply with FCC RF Exposure requirements, this device must be installed to provide at least 20 cm separation from the human body at all times.

Radiation Exposure Statement:

1. This equipment complies with FCC radiation exposure limits set forth for an uncontrolled environment. This equipment should be installed and operated with minimum distance 20cm between the radiator & your body.
2. The device has been evaluated to meet general RF exposure requirement.

IC STATEMENT

This device contains licence-exempt transmitter(s)/receiver(s) that comply with Innovation, Science and Economic Development Canada's licence-exempt RSS(s). Operation is subject to the following two conditions:

1. This device may not cause interference.
2. This device must accept any interference, including interference that may cause undesired operation of the device.

L'émetteur/récepteur exempt de licence contenu dans le présent appareil est conforme aux CNR d'Innovation, Sciences et Développement économique Canada applicables aux appareils radio exempts de licence. L'exploitation est autorisée aux deux conditions suivantes:

1. L'appareil ne doit pas produire de brouillage;
2. L'appareil doit accepter tout brouillage radioélectrique subi, même si le brouillage est susceptible d'en compromettre le fonctionnement.

In order to comply with ICSED RF Exposure requirements, this device must be installed to provide at least 20 cm separation from the human body at all times.

Afin de se conformer aux exigences d'exposition RF ICSED, cet appareil doit être installé pour fournir au moins 20 cm de séparation du corps humain en tout temps.

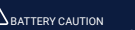
This equipment should be installed and operated with minimum distance 20cm between the radiator & your body.

Lors de l'installation et du fonctionnement de cet équipement, la distance minimale entre le radiateur et le corps doit être de 20 cm.



UK DECLARATION OF CONFORMITY

Hereby, Swann Communications declares that this product is in compliance with the requirements for UKCA marking.



BATTERY CAUTION

1. Do not expose the battery to fire.
2. Never reverse charge the battery.
3. Never short circuit the battery.
4. Avoid excessive physical shock or vibration.
5. Do not disassemble or deform the battery.
6. Never allow the battery to get wet or be immersed in water.
7. Do not use different types of battery.
8. Keep the battery away from children.
9. Charge under appropriate conditions.
10. Never use a faulty charger for charging.
11. Do not charge the battery for more than 24 hours.

Note: When the device runs out of power, remove it and charge it immediately.

The content in this guide is for information purposes only and is subject to change without notice. While every effort is made to ensure that this guide is accurate and complete at the time of publication, no liability is assumed for any errors and omissions that may have occurred.



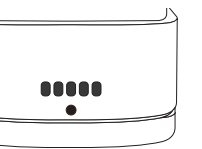
SUPPORT.SWANN.COM

- FAQs & Help Articles
- Manuals, Guides & Videos
- Technical Support

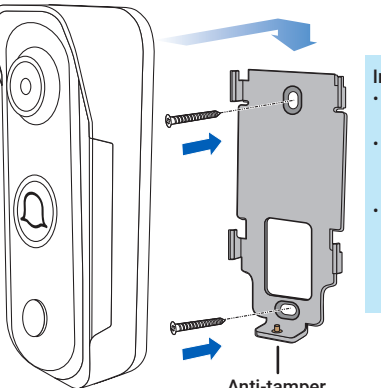
5 Mounting the Video Doorbell

The Video Doorbell can be mounted using the provided mounting bracket shown below. Before installation, ensure the chosen location has strong signal strength to the MaxRanger Power Hub. To test, use the app to stream live video from the Video Doorbell at the desired location. If the video streams without issues, the spot is suitable for installation.

Mount the Video Doorbell at chest height, approximately 1.2–1.6 meters (3.9–5.2 feet) from the ground, depending on the location.



Tighten the anti-tamper screw to the bottom of the Video Doorbell with a Phillips screwdriver after mounting.



Installing the Bracket:

- For Wooden Surfaces: Screw the bracket directly onto the surface.
- For Masonry or Drywall: Insert wall plugs before securing the bracket with screws.
- For Screw Installation Only: If there is a gap between the wall and the bracket, apply the supplied bracket foam tape to fill it.

Anti-tamper screw

6 Notes

Ring Button Status Guide

Solid Blue: Charging the battery.

Slow Blinking Blue: Pairing mode.

Solid Red: Live streaming / Motion recording.

Blinking Purple: Low battery state.

Infrared LEDs Blinking: Firmware is updating.

Answering the Video Doorbell

When the doorbell button is pressed, the Chime will sound, and you'll receive a push notification from the Swann Security app. Tap the notification to watch live video and see who's at the door. You can also use the 2-way talk function to speak directly.

Motion Detection

The Video Doorbell's motion sensor detects the heat signatures of moving objects such as people and vehicles. Whenever motion is detected, the Video Doorbell records the event.

Event clips can vary from 10 seconds to one minute, depending on how long the motion activity lasts. You can customize the detection sensitivity level in the app. If you're receiving too many false alerts, try reducing the sensitivity. Keep in mind, that increased activity detection, recording and live streaming will drain the battery more quickly.



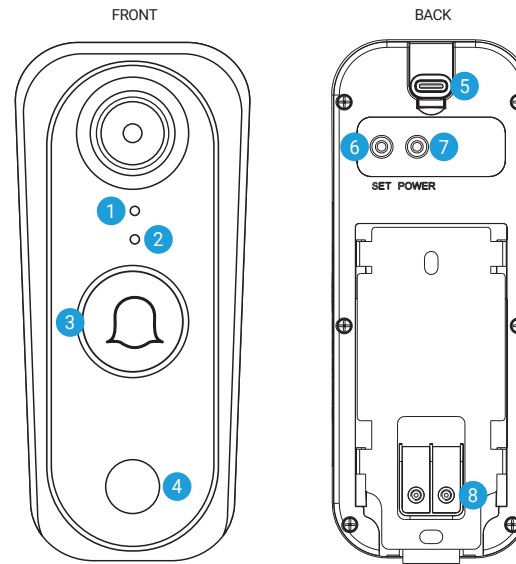
MaxRanger4K Video Doorbell

For MaxRanger4K Wireless Security Systems

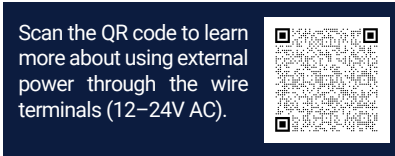
HVIN: NVW-MR4KVDB

Instruction Manual

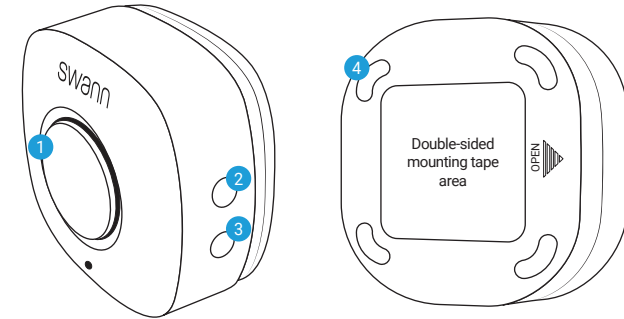
1 Video Doorbell Overview



1. Microphone
 2. Night detection sensor
 3. Ring button
 4. Passive infrared motion sensor
 5. USB-C charging port
 6. Pair button
 7. Power button
 8. Wire terminals (for optional external power)
- Remove the protective film before use.



2 Chime Overview



- Front**
1. Speaker
 2. Chime selection button
 3. Chime volume button
- Back**
4. Battery compartment
- Installing Batteries**

1. Slide the battery compartment cover to the right to remove it.
2. Insert the supplied 'AA' batteries, ensuring the polarity (+ and -) matches the markings inside the battery compartment.
3. Once done, slide the battery compartment cover back into place.

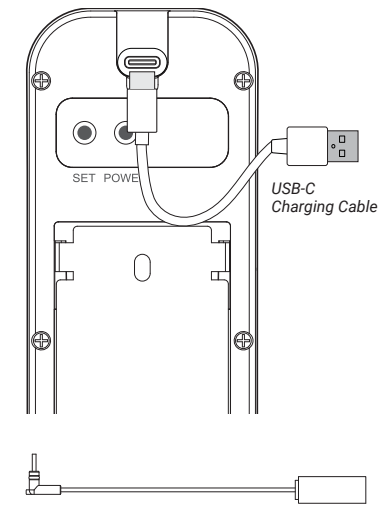
Pairing the Chime to the Video Doorbell

1. Press and hold the volume button on the Chime. The Video Doorbell will announce that it is ready for pairing.
2. Press the ring button on the Video Doorbell.
3. The Video Doorbell will pair with the Chime, and a confirmation announcement will indicate a successful pairing.

3 Charging the Video Doorbell

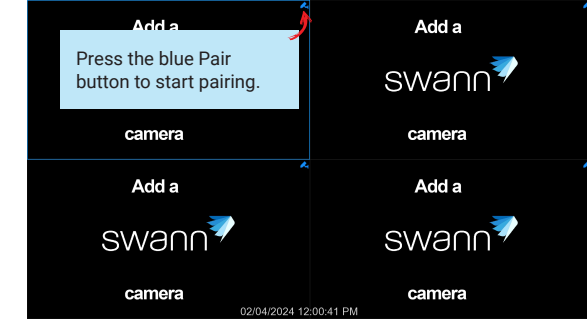
1. Remove the rubber cover located at the top rear of the Video Doorbell.
2. To turn on the Video Doorbell, press and hold the **Power** button for about 6 seconds until the ring button lights up blue, then red.
3. Insert the smaller end of the USB-C charging cable into the USB-C port on the Video Doorbell, and the larger end into a USB wall charger or a spare USB port on your MaxRanger Power Hub.

- The ring button light will stay solid blue while charging and turn off once the Video Doorbell is fully charged.
- Charging times may vary based on the USB power adapter and current battery level. A full charge can take up to six hours.
- Once charging is complete, unplug the USB-C charging cable and securely replace the rubber cover to protect against dust and moisture.



Optional right-angle USB-C extension cable accessory can be used to connect to a Swann Solar panel.

4 Pairing the Video Doorbell



1. Press and hold the Set button on the Video Doorbell until the blue LED begins flashing, then release. The camera is now in pairing mode.
2. In Live View mode, select the channel you want to pair the Video Doorbell with. Press the blue Pair button to start the pairing process.
3. A pairing notification will appear on the screen.
4. After a brief moment, the Video Doorbell will pair successfully, and its image will appear on the screen. If pairing fails, repeat the steps and try again.