
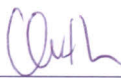
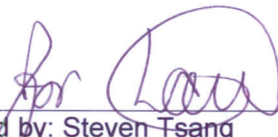


TEST REPORT No: (5213)200-0472(A)

TEST REPORT

To:	ASIAN EXPRESS HOLDING LTD.	To:	-
Attn:	Bob Cheng	Attn:	-
Address:	4F, -4, No.669 Jingping Rd., Zhonghe City, Taipei county 235, Taiwan	Address:	-
Fax:	61675805-2633	Fax:	-
E-mail:	bob@icl.net.cn	E-mail:	-
Folder No.:	--		
Factory name:	--		
Location:	--		
Product:	Air Combat with Flight Stick Model No.: PL-1170 / PL-1171 / PL-1172 / PL-1173 / PL-1174		
	Sample No:	(5213)200-0472	
	Test date:	July 30, 2013	
	Test Requested:	FCC Part 15 - 2011	
	Test Method:	ANSI C63.4 - 2009	
	FCC ID:	VLEPL1170-R	
The results given in this report are related to the tested specimen of the described electrical apparatus.			
CONCLUSION: The submitted sample was found to COMPLY with requirement of FCC Part 15 Subpart C.			
Authorized Signature:			
			
Reviewed by: Keith Yeung		Approved by: Steven Tsang	
Date: August 15, 2013		Date: August 15, 2013	



TEST REPORT No: (5213)200-0472(A)
Test Result Summary

EMISSION TEST			
Test requirement: FCC Part 15 - 2011			
Test Condition	Test Method	Test Result	
		Pass	Failed
Radiated Emission Test, 9kHz to 40GHz	ANSI C63.4	<input checked="" type="checkbox"/>	<input type="checkbox"/>

Report Revision & Sample Re-submit History:

--



TEST REPORT No: (5213)200-0472(A)

Location of the test laboratory

Radiated and Conducted emissions measurements are investigated and taken pursuant to the procedures of ANSI C63.4 – 2009. An Open Area Test Site and Full Anechoic Chamber (FCC Listed Site, Registration No. 642151) are set up for investigation and located at :

BUREAU VERITAS HONG KONG LIMITED, EMC CENTRE

No. 2106-2107, 21/F., Westin Centre,
26 Hung To Road,
Kwun Tong, Kowloon,
Hong Kong

List of measuring equipment

Radiated Emission

EQUIPMENT	MANUFACTURER	MODEL NO.	SERIAL NO.	CALIBRATION DUE
EMI TEST RECEIVER	R&S	ESCI	100379	28-JAN-2014
SPECTRUM ANALYZER	R&S	R3127	111000909	29-JAN-2014
BILOG ANTENNA	SCHAFFNER	CBL6112D	25229	12-SEP-2013
HORN ANTENNA	SCHWARZBECK	BBHA9120D	9120D-692	12-SEP-2013
PREAMPLIFIER	SCHWARZBECK	BBV9718	9718-152	15-OCT-2013
OPEN AREA TEST SITE	BVCPS	N/A	N/A	08-JUL-2014
ANECHOIC CHAMBER	ALBATROSS	M-CDC	80374004499B	05-FEB-2014
COAXIAL CABLE	SUHNER	N/A	N/A	07-NOV-2013
COAXIAL CABLE	HUBER + SUHNER	RG214	N/A	24-SEP-2013

Remarks:-

N/A : Not Applicable or Not Available

The measurement instrumentation uncertainty would be taking into consideration on each of the test result

TEST REPORT No: (5213)200-0472(A)

Equipment Under Test [EUT]

Description of Sample:

Model Name: Air Combat with Flight Stick
Model Number: PL-1170
Additional Model Name: --
Additional Model Number: PL-1171 / PL-1172 / PL-1173 / PL-1174
Additional Model information: Declare the Circuit, PCB layout and Electrical parts of the products are identical to the basic model, except the model number for market purpose.
Rating: 3.7Vd.c. ("internal rechargeable battery" x 1)

Description of EUT Operation:

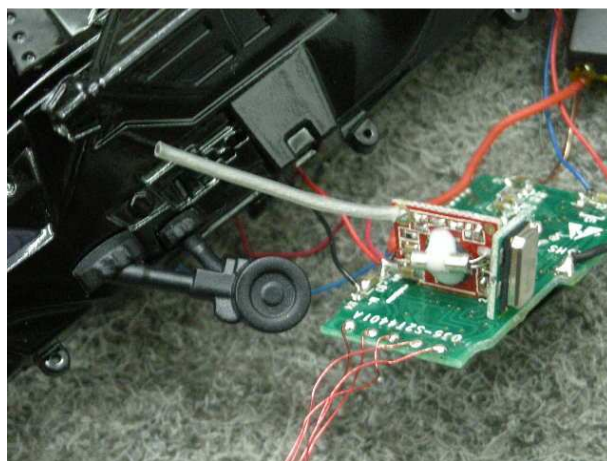
The Equipment Under Test (EUT) is a **ASIAN EXPRESS HOLDINGS LIMITED** of Remote Control Transmitter. It is a 1 switch transceiver and operating at 2405MHz to 2478MHz. The lowest, middle and highest frequencies were tested and the results are shown in the report. The EUT transmit while received the controller commands, Modulation by IC, and type is GFSK.

The transmitter has different control:

1. ON/OFF switch – ON/OFF control

Antenna Requirement (Section 15.203)

The EUT is use of a permanently antenna. It is soldered on the PCB. The antenna consists of 3cm long wire The antenna is not replaceable or user serviceable. The requirements of S15.203 are met. There are no deviations or exceptions to the specifications.



TEST REPORT No: (5213)200-0472(A)

Radiated Emissions (Fundamental)

Test Requirement: FCC Part 15 Section 15.249
Test Method: ANSI C63.4
Test Date(s): 2013-07-30
Temperature: 31.0 °C
Humidity: 79.0 %
Atmospheric Pressure: 100.2 kPa
Mode of Operation: Transmission mode
Tested Voltage: 3.7Vd.c. ("internal rechargeable battery" x 1)

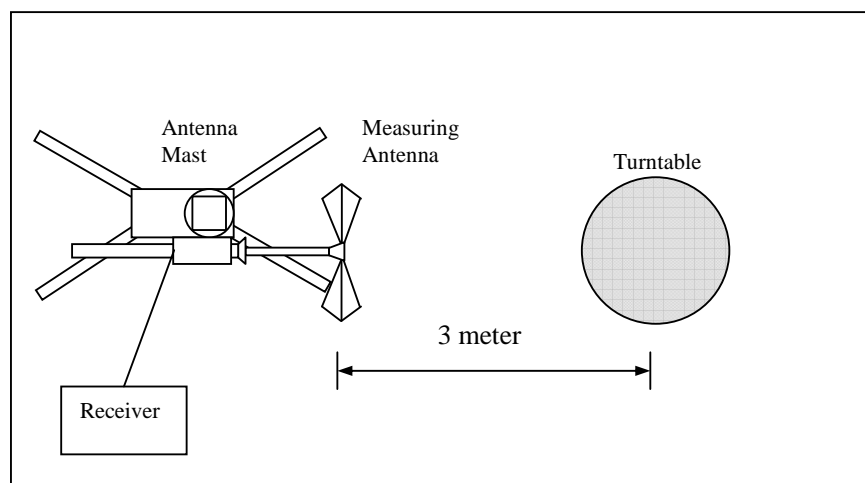
Test Procedure:

Radiated emissions measurements are investigated and taken pursuant to the procedures of ANSI C63.4 – 2009.

The equipment under test (EUT) was placed on a non-conductive turntable with dimensions of 1.5m x 1m and 0.8m high above the ground. 3m from the EUT, a broadband antenna mounting on the mast received the signal strength. During the test, each emission was maximized by: having the EUT continuously working, investigated all operating modes, rotated about all 3 axis (X, Y & Z) and considered typical configuration to obtain worst position, manipulating interconnecting cables. For battery operated equipment, the equipment tests shall be performed using new battery. The turntable was rotated to maximize the emission level. The antenna was then moving along the mast from 1m up to 4m until no more higher value was found. Both horizontal and vertical polarization of the antenna were placed and investigated.

Location: The Roof, Westin Centre, 26 Hung To Road, Kwun Tong, Kowloon, Hong Kong

Test Setup: Open Area Test Site



TEST REPORT No: (5213)200-0472(A)

Limits for Field Strength of Fundamental Emissions [FCC 47CFR 15.249]:

Frequency Range of Fundamental [MHz]	Field Strength of Fundamental Emission (Average) [mV/m]	Field Strength of Harmonics Emission (Average) [μV/m]
2400-2483.5	50	500

Measurement Data

Test Result of (Transmission mode, Lowest frequency): PASS

Frequency (MHz)	Polarity (H/V)	Antenna Factor & Cable Loss (dB/m)	Duty-cycle correction (dB)	Field Strength at 3m – Peak (dBμV/m)	Limit at 3m – Peak (dBμV/m)	Margin - Peak (dB)	Field Strength at 3m – Average (dBμV/m)	Limit at 3m – Average (dBμV/m)	Margin - Average (dB)
2405.00	H	-2.7	-20.0	74.2	114.0	-39.8	**54.2	94.0	-39.8
2405.00	V	-2.7	-20.0	76.2	114.0	-37.8	**56.2	94.0	-37.8

Test Result of (Transmission mode, Middle frequency): PASS

Frequency (MHz)	Polarity (H/V)	Antenna Factor & Cable Loss (dB/m)	Duty-cycle correction (dB)	Field Strength at 3m – Peak (dBμV/m)	Limit at 3m – Peak (dBμV/m)	Margin - Peak (dB)	Field Strength at 3m – Average (dBμV/m)	Limit at 3m – Average (dBμV/m)	Margin - Average (dB)
2442.00	H	-2.7	-20.0	71.3	114.0	-42.7	**51.3	94.0	-42.7
2442.00	V	-2.7	-20.0	73.9	114.0	-40.1	**53.9	94.0	-40.1

Test Result of (Transmission mode, Highest frequency): PASS

Frequency (MHz)	Polarity (H/V)	Antenna Factor & Cable Loss (dB/m)	Duty-cycle correction (dB)	Field Strength at 3m – Peak (dBμV/m)	Limit at 3m – Peak (dBμV/m)	Margin - Peak (dB)	Field Strength at 3m – Average (dBμV/m)	Limit at 3m – Average (dBμV/m)	Margin - Average (dB)
2478.00	H	-2.7	-20.0	65.1	114.0	-48.9	**45.1	94.0	-48.9
2478.00	V	-2.7	-20.0	71.4	114.0	-42.6	**51.4	94.0	-42.6

For pulse modulated devices and using measuring equipment employing a peak detection mode, properly adjusted for such factor as pulse desensitisation.

**Duty Cycle Correction = $20\log(0.00317) = -50.0\text{dB}$.

**Therefore, -20dB is taken.

Note: Field Strength includes Antenna Factor and Cable Loss.

Receiver setting: RBW = 1MHz
VBW = 1MHz



TEST REPORT No: (5213)200-0472(A)

Radiated Emissions (Spurious Emission)

Test Requirement: FCC Part 15 Section 15.249
 Test Method: ANSI C63.4
 Test Date(s): 2013-07-30
 Temperature: 31.0 °C
 Humidity: 79.0 %
 Atmospheric Pressure: 100.2 kPa
 Mode of Operation: Transmission mode
 Tested Voltage: 3.7Vd.c. ("internal rechargeable battery" x 1)

Measurement Data

Test Result of (Transmission mode, Lowest frequency): PASS

Frequency (MHz)	Polarity (H/V)	Antenna Factor & Cable Loss (dB/m)	Duty-cycle correction (dB)	Field Strength at 3m – Peak (dBμV/m)	Limit at 3m – Peak (dBμV/m)	Margin - Peak (dB)	Field Strength at 3m – Average (dBμV/m)	Limit at 3m – Average (dBμV/m)	Margin - Average (dB)
4810.00	H	6.3	-20.0	61.5	74.0	-12.5	**41.5	54.0	-12.5
7215.00	H	13.5	-20.0	61.7	74.0	-12.3	**41.7	54.0	-12.3
9620.00	H	13.2	-20.0	61.3	74.0	-12.7	**41.3	54.0	-12.7
12025.00	H	18.5	-20.0	61.3	74.0	-12.7	**41.3	54.0	-12.7
14430.00	H	19.2	-20.0	61.8	74.0	-12.2	**41.8	54.0	-12.2
16835.00	H	25.4	-20.0	62.5	74.0	-11.5	**42.5	54.0	-11.5
19240.00	H	27.3	-20.0	62.7	74.0	-11.3	**42.7	54.0	-11.3
21645.00	H	29.3	-20.0	62.8	74.0	-11.2	**42.8	54.0	-11.2
24050.00	H	32.1	-20.0	62.6	74.0	-11.4	**42.6	54.0	-11.4
26455.00	H	33.9	-20.0	62.4	74.0	-11.6	**42.4	54.0	-11.6

For pulse modulated devices and using measuring equipment employing a peak detection mode, properly adjusted for such factor as pulse desensitisation.

**Duty Cycle Correction = $20\log(0.00317) = -50.0\text{dB}$.

**Therefore, -20dB is taken.

Note: Field Strength includes Antenna Factor and Cable Loss.

Receiver setting: RBW = 1MHz
VBW = 1MHz



TEST REPORT No: (5213)200-0472(A)

Measurement Data

Test Result of (Transmission mode, Lowest frequency): PASS

Frequency (MHz)	Polarity (H/V)	Antenna Factor & Cable Loss (dB/m)	Duty-cycle correction (dB)	Field Strength at 3m – Peak (dBμV/m)	Limit at 3m – Peak (dBμV/m)	Margin - Peak (dB)	Field Strength at 3m – Average (dBμV/m)	Limit at 3m – Average (dBμV/m)	Margin - Average (dB)
4810.00	V	6.3	-20.0	61.4	74.0	-12.6	**41.4	54.0	-12.6
7215.00	V	13.5	-20.0	61.2	74.0	-12.8	**41.2	54.0	-12.8
9620.00	V	13.2	-20.0	61.7	74.0	-12.3	**41.7	54.0	-12.3
12025.00	V	18.5	-20.0	60.9	74.0	-13.1	**40.9	54.0	-13.1
14430.00	V	19.2	-20.0	61.7	74.0	-12.3	**41.7	54.0	-12.3
16835.00	V	25.4	-20.0	62.6	74.0	-11.4	**42.6	54.0	-11.4
19240.00	V	27.3	-20.0	62.4	74.0	-11.6	**42.4	54.0	-11.6
21645.00	V	29.3	-20.0	61.2	74.0	-12.8	**41.2	54.0	-12.8
24050.00	V	32.1	-20.0	62.1	74.0	-11.9	**42.1	54.0	-11.9
26455.00	V	33.9	-20.0	62.1	74.0	-11.9	**42.1	54.0	-11.9

For pulse modulated devices and using measuring equipment employing a peak detection mode, properly adjusted for such factor as pulse desensitisation.

**Duty Cycle Correction = $20\log(0.00317) = -50.0\text{dB}$.

**Therefore, -20dB is taken.

Note: Field Strength includes Antenna Factor and Cable Loss.

Receiver setting: RBW = 1MHz
VBW = 1MHz

TEST REPORT No: (5213)200-0472(A)

Measurement Data

Test Result of (Transmission mode, Middle frequency): PASS

Frequency (MHz)	Polarity (H/V)	Antenna Factor & Cable Loss (dB/m)	Duty-cycle correction (dB)	Field Strength at 3m – Peak (dBμV/m)	Limit at 3m – Peak (dBμV/m)	Margin - Peak (dB)	Field Strength at 3m – Average (dBμV/m)	Limit at 3m – Average (dBμV/m)	Margin - Average (dB)
4884.00	H	6.3	-20.0	61.0	74.0	-13.0	**41.0	54.0	-13.0
7326.00	H	13.5	-20.0	61.4	74.0	-12.6	**41.4	54.0	-12.6
9768.00	H	13.2	-20.0	62.0	74.0	-12.0	**42.0	54.0	-12.0
12210.00	H	18.5	-20.0	61.4	74.0	-12.6	**41.4	54.0	-12.6
14652.00	H	19.2	-20.0	61.3	74.0	-12.7	**41.3	54.0	-12.7
17094.00	H	25.4	-20.0	62.7	74.0	-11.3	**42.7	54.0	-11.3
19536.00	H	27.3	-20.0	62.7	74.0	-11.3	**42.7	54.0	-11.3
21978.00	H	29.3	-20.0	62.0	74.0	-12.0	**42.0	54.0	-12.0
24420.00	H	32.1	-20.0	62.7	74.0	-11.3	**42.7	54.0	-11.3
26862.00	H	33.9	-20.0	62.3	74.0	-11.7	**42.3	54.0	-11.7

Frequency (MHz)	Polarity (H/V)	Antenna Factor & Cable Loss (dB/m)	Duty-cycle correction (dB)	Field Strength at 3m – Peak (dBμV/m)	Limit at 3m – Peak (dBμV/m)	Margin - Peak (dB)	Field Strength at 3m – Average (dBμV/m)	Limit at 3m – Average (dBμV/m)	Margin - Average (dB)
4884.00	V	6.3	-20.0	61.2	74.0	-12.8	**41.2	54.0	-12.8
7326.00	V	13.5	-20.0	61.8	74.0	-12.2	**41.8	54.0	-12.2
9768.00	V	13.2	-20.0	62.5	74.0	-11.5	**42.5	54.0	-11.5
12210.00	V	18.5	-20.0	61.1	74.0	-12.9	**41.1	54.0	-12.9
14652.00	V	19.2	-20.0	61.6	74.0	-12.4	**41.6	54.0	-12.4
17094.00	V	25.4	-20.0	62.5	74.0	-11.5	**42.5	54.0	-11.5
19536.00	V	27.3	-20.0	62.3	74.0	-11.7	**42.3	54.0	-11.7
21978.00	V	29.3	-20.0	62.8	74.0	-11.2	**42.8	54.0	-11.2
24420.00	V	32.1	-20.0	62.5	74.0	-11.5	**42.5	54.0	-11.5
26862.00	V	33.9	-20.0	62.9	74.0	-11.1	**42.9	54.0	-11.1

For pulse modulated devices and using measuring equipment employing a peak detection mode, properly adjusted for such factor as pulse desensitisation.

**Duty Cycle Correction = $20\log(0.00317) = -50.0\text{dB}$.

**Therefore, -20dB is taken.

Note: Field Strength includes Antenna Factor and Cable Loss.

Receiver setting: RBW = 1MHz

VBW = 1MHz

TEST REPORT No: (5213)200-0472(A)

Measurement Data

Test Result of (Transmission mode, Highest frequency): PASS

Frequency (MHz)	Polarity (H/V)	Antenna Factor & Cable Loss (dB/m)	Duty-cycle correction (dB)	Field Strength at 3m – Peak (dBμV/m)	Limit at 3m – Peak (dBμV/m)	Margin - Peak (dB)	Field Strength at 3m – Average (dBμV/m)	Limit at 3m – Average (dBμV/m)	Margin - Average (dB)
4956.00	H	6.3	-20.0	61.0	74.0	-13.0	**41.0	54.0	-13.0
7434.00	H	13.5	-20.0	61.4	74.0	-12.6	**41.4	54.0	-12.6
9912.00	H	13.2	-20.0	61.6	74.0	-12.4	**41.6	54.0	-12.4
12390.00	H	18.5	-20.0	62.0	74.0	-12.0	**42.0	54.0	-12.0
14868.00	H	19.2	-20.0	62.1	74.0	-11.9	**42.1	54.0	-11.9
17346.00	H	26.2	-20.0	62.7	74.0	-11.3	**42.7	54.0	-11.3
19824.00	H	27.3	-20.0	63.0	74.0	-11.0	**43.0	54.0	-11.0
22302.00	H	29.3	-20.0	62.2	74.0	-11.8	**42.2	54.0	-11.8
24780.00	H	32.1	-20.0	62.2	74.0	-11.8	**42.2	54.0	-11.8
27258.00	H	33.9	-20.0	63.2	74.0	-10.8	**43.2	54.0	-10.8

Frequency (MHz)	Polarity (H/V)	Antenna Factor & Cable Loss (dB/m)	Duty-cycle correction (dB)	Field Strength at 3m – Peak (dBμV/m)	Limit at 3m – Peak (dBμV/m)	Margin - Peak (dB)	Field Strength at 3m – Average (dBμV/m)	Limit at 3m – Average (dBμV/m)	Margin - Average (dB)
4956.00	V	6.3	-20.0	60.8	74.0	-13.2	**40.8	54.0	-13.2
7434.00	V	13.5	-20.0	61.8	74.0	-12.2	**41.8	54.0	-12.2
9912.00	V	13.2	-20.0	62.1	74.0	-11.9	**42.1	54.0	-11.9
12390.00	V	18.5	-20.0	62.3	74.0	-11.7	**42.3	54.0	-11.7
14868.00	V	19.2	-20.0	62.2	74.0	-11.8	**42.2	54.0	-11.8
17346.00	V	26.2	-20.0	62.3	74.0	-11.7	**42.3	54.0	-11.7
19824.00	V	27.3	-20.0	62.8	74.0	-11.2	**42.8	54.0	-11.2
22302.00	V	29.3	-20.0	62.4	74.0	-11.6	**42.4	54.0	-11.6
24780.00	V	32.1	-20.0	63.5	74.0	-10.5	**43.5	54.0	-10.5
27258.00	V	33.9	-20.0	62.8	74.0	-11.2	**42.8	54.0	-11.2

For pulse modulated devices and using measuring equipment employing a peak detection mode, properly adjusted for such factor as pulse desensitisation.

**Duty Cycle Correction = $20\log(0.00317) = -50.0\text{dB}$.

**Therefore, -20dB is taken.

Note: Field Strength includes Antenna Factor and Cable Loss.

Receiver setting: RBW = 1MHz

VBW = 1MHz



TEST REPORT No: (5213)200-0472(A)

Radiated Emissions (30MHz – 2.4GHz)

Test Requirement: FCC Part 15 Section 15.209
Test Method: ANSI C63.4
Test Date(s): 2013-07-30
Temperature: 31.0 °C
Humidity: 79.0 %
Atmospheric Pressure: 100.2 kPa
Mode of Operation: On mode
Tested Voltage: 3.7Vd.c. ("internal rechargeable battery" x 1)

Limits for Radiated Emissions [FCC 47 CFR 15.209]:

Frequency Range [MHz]	Quasi-Peak Limits [μV/m]
1.705-30	300
30-88	100
88-216	150
216-960	200
Above960	500



TEST REPORT No: (5213)200-0472(A)

Measurement Data

Test Result of (On mode): PASS

Detection mode: Quasi-Peak

Frequency (MHz)	Polarity (H/V)	Field Strength at 3m (dB μ V/m)	Limit at 3m (dB μ V/m)	Margin (dB)
37.26	H	28.9	40.0	-11.1
70.28	H	24.7	40.0	-15.3
256.72	H	22.5	46.0	-23.5
322.88	H	24.6	46.0	-21.4
445.16	H	27.5	46.0	-18.5
581.22	H	29.2	46.0	-16.8

Frequency (MHz)	Polarity (H/V)	Field Strength at 3m (dB μ V/m)	Limit at 3m (dB μ V/m)	Margin (dB)
37.26	V	29.0	40.0	-11.0
70.28	V	24.3	40.0	-15.7
256.72	V	22.6	46.0	-23.4
322.88	V	24.1	46.0	-21.9
445.16	V	27.2	46.0	-18.8
581.22	V	29.9	46.0	-16.1

Note: Field Strength includes Antenna Factor and Cable Loss.

Receiver setting: RBW = 120KHz
VBW = 120KHz



TEST REPORT No: (5213)200-0472(A)

Frequency range of Fundamental Emission

Test Requirement: FCC 47 CFR 15.249
Test Method: ANSI C63.4:2009 (Section 13.1.7)
Test Date(s): 2013-07-30
Temperature: 31.0 °C
Humidity: 79.0 %
Atmospheric Pressure: 100.2 kPa
Mode of Operation: Transmission mode
Tested Voltage: 3.7Vd.c. ("internal rechargeable battery" x 1)

Test Method:

The bandwidth is measured at an amplitude level reduced from the reference level by a specified ratio. The reference level is the level of the highest amplitude signal observed from the transmitter at the fundamental frequency. Once the reference level is established, the equipment is conditioned with typical modulating signal to produce the worst-case (i.e. the widest) bandwidth.

Limits for Frequency range of Fundamental Emission:

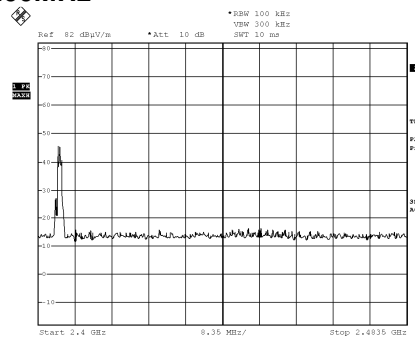
Frequency [MHz]	FCC Limits [MHz]
2405.00 – 2478.00	2400 – 2483.5

TEST REPORT No: (5213)200-0472(A)

Measurement Data :

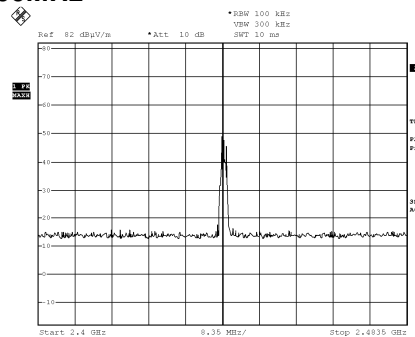
Test Result of Frequency Range of Fundamental Emission: PASS

Lowest Frequency – 2405.00MHz



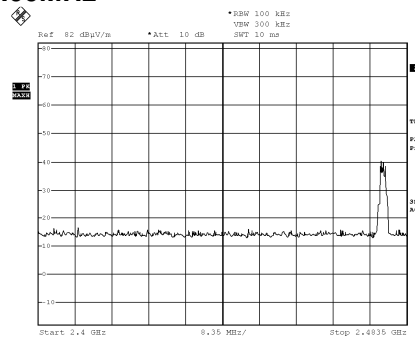
Date: 30.JUL.2013 11:11:01

Middle Frequency – 2442.00MHz



Date: 30.JUL.2013 12:16:37

Highest Frequency – 2478.00MHz

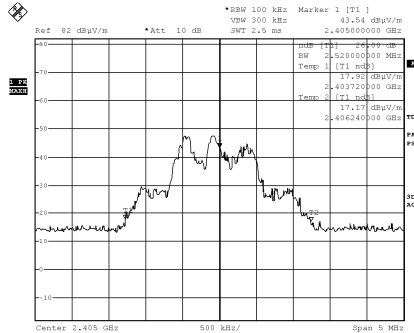


Date: 30.JUL.2013 11:19:37

TEST REPORT No: (5213)200-0472(A) Measurement Data :

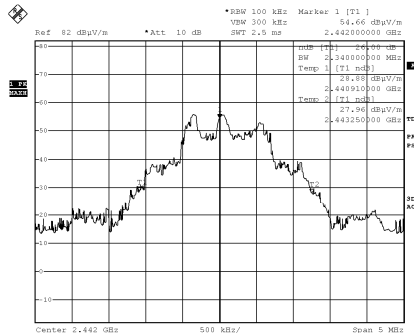
Test Result of 26dB Bandwidth of Fundamental Emission: PASS

Lowest Frequency – 2405.00MHz



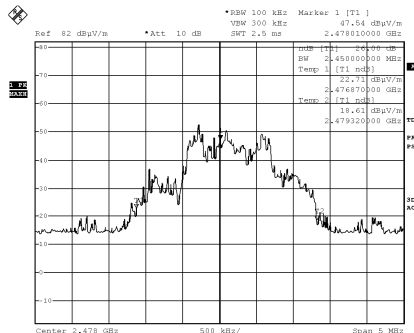
Date: 30.JUL.2013 11:10:39

Middle Frequency – 2442.00MHz



Date: 30.JUL.2013 11:27:51

Highest Frequency – 2478.00MHz



Date: 30.JUL.2013 11:22:14



TEST REPORT No: (5213)200-0472(A)

Duty Cycle Correction During 100msec:

Each function key sends a different series of characters, but each packet period (63msec) never exceeds a series of 1 pulse (0.2msec). Assuming any combination of short or long pulses may be obtained due to encoding the worst case transmit duty cycle would be considered $0.2\text{msec per } 63\text{msec} = 0.377\%$ duty cycle. Figure A to B show the characteristics of the pulse train for one of these functions

Remarks:

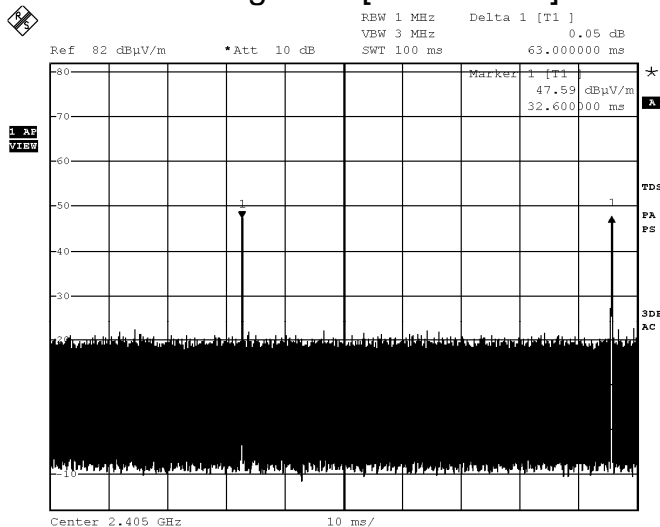
Duty Cycle Correction = $20\text{Log}(0.00317) = -50.0\text{dB}$
Therefore, -20dB is taken

The following figures [Figure A to B] show the characteristics of the pulse train for one of these functions.

TEST REPORT No: (5213)200-0472(A)

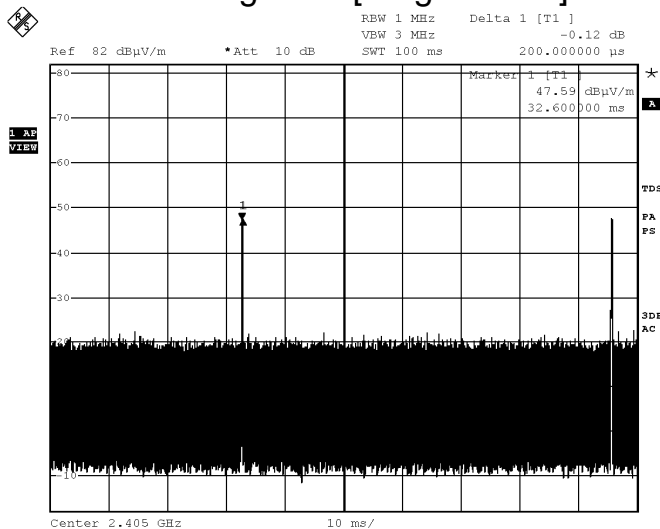
Measurement Data :

Figure A [Pulse Train]



Date: 30.JUL.2013 11:14:14

Figure B [Single Pulse]



Date: 30.JUL.2013 11:14:27

TEST REPORT No: (5213)200-0472(A)

Photographs of EUT

Front View of the product



Rear View of the product



Top View of the product



Bottom view of the product



Side View of the product



Side View of the product



USB cable connection



USB Cable



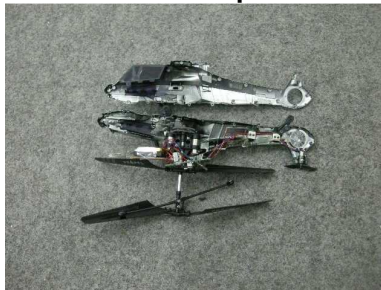
TEST REPORT No: (5213)200-0472(A)

Photographs of EUT

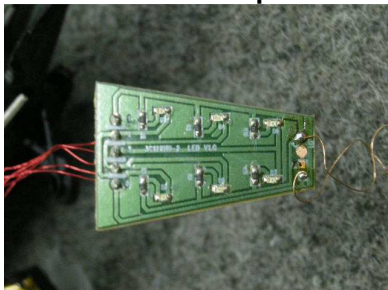
Inner view of product



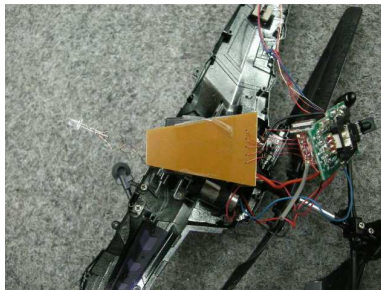
Inner view of product



Inner Circuit Top View



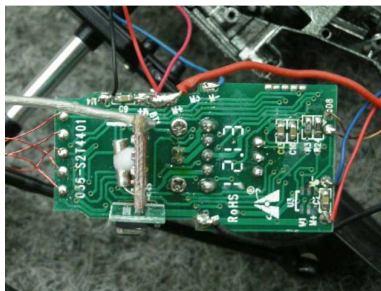
Inner Circuit Bottom View



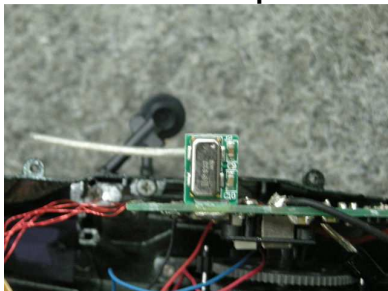
Inner Circuit Top View



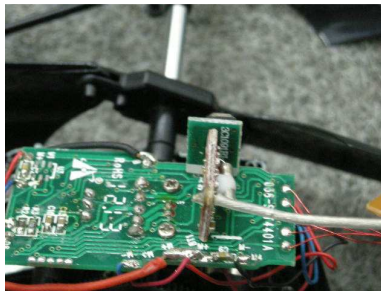
Inner Circuit Bottom View



Inner Circuit Top View



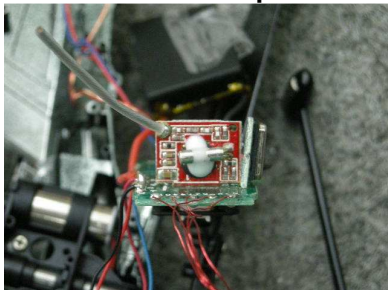
Inner Circuit Bottom View



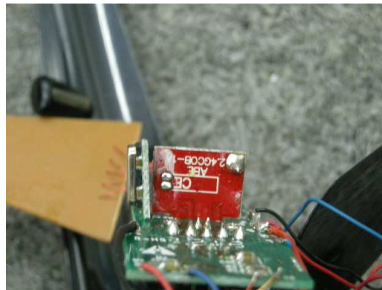
TEST REPORT No: (5213)200-0472(A)

Photographs of EUT

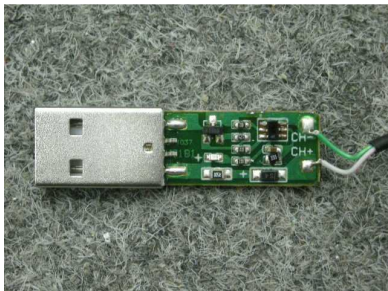
Inner Circuit Top View



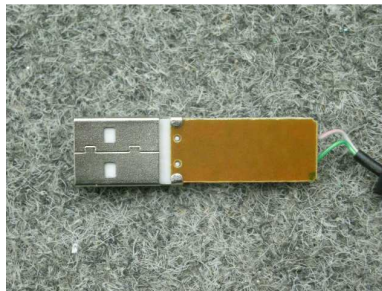
Inner Circuit Bottom View



**Inner Circuit Top View of
USB Cable**



**Inner Circuit Bottom View of
USB Cable**



TEST REPORT No: (5213)200-0472(A)

Measurement of Radiated Emission Test Set Up



******* End of Report *******