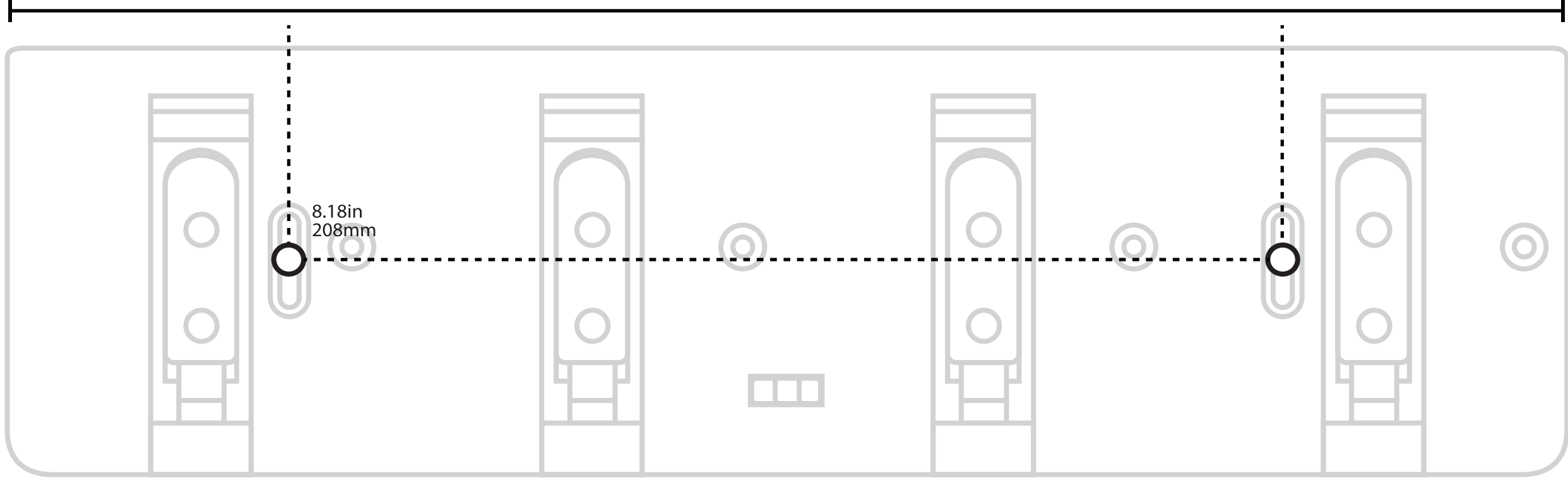
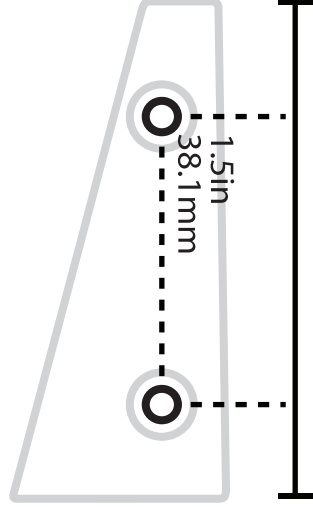


BASE STATION
MOUNTING TEMPLATE



SINGLE PUMP
MOUNTING TEMPLATE



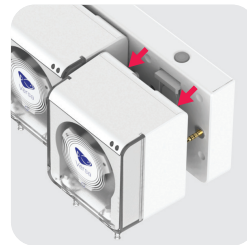


Mobius Controlled
 Download the app from:

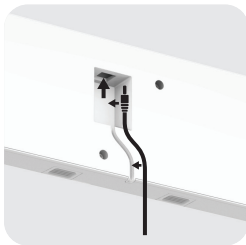


BASE STATION

For Four Pack and Base Station Accessory Installation



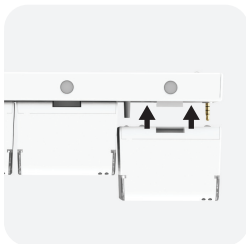
1. Remove the pumps from
 base station



2. Plug power cable into
 back of base station



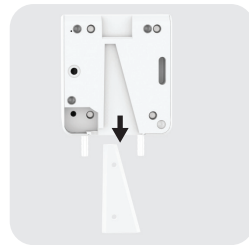
3. Measure and mount
 base station (Mounting
 template included)



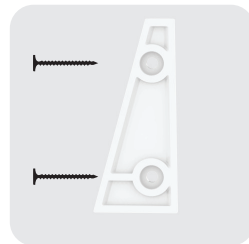
4. Re-attach pumps,
 connect to wall outlet
 then **open Mobius app**

SINGLE PUMP

For Single Pump Installation



1. Remove the mounting plate
 from the back of pump



3. Measure and mount
 the plate (Mounting
 template included)



2. Plug power cable into
 back of the Versa



4. Mount Versa, connect
 to wall outlet then
open Mobius app

SAFETY STATEMENTS

Incorrect usage of this device could cause bodily injury or death. Follow all safety guidelines when assembling and using this fixture. Always read the manual prior to use.

WARNING

DO NOT immerse the product or power supply in water. If the product or power supply falls into the water, DO NOT reach for it! First unplug it and then retrieve it. If electrical components of the appliance get wet, unplug the appliance immediately. Death, injury, or destruction of property may result.

WARNING

Do not use appliance for other than intended use. The use of attachments, power cords, or accessories not sold by the manufacturer may cause an unsafe condition resulting in death, injury, or destruction of property may result.

To avoid possible electrical shock, special care should be taken since water is employed in the use of aquarium equipment.
 • If a plug or receptacle becomes wet, immediately disconnect the use or circuit breaker.
 • Do not operate any product if it has a damaged cord or plug, if it is malfunctioning or if it is dropped or damaged in any manner.
 • Carefully examine the product after installation. It should not be plugged in if there is water on parts not intended to be wet.
 • Never yank cord to pull plug from outlet. Grasp the plug and pull to disconnect.
 • Position the aquarium stand and tank to one side of a wall-mounted receptacle to prevent water from dripping onto the receptacle or plug. A 'drip-loop' should be employed for each cord connecting an aquarium appliance to a receptacle. A 'drip-loop' is the part of the cord below the level of the receptacle (or the connector if an extension cord), to prevent water from traveling along the cord and coming in contact with the receptacle.
 • If an extension cord is necessary, a cord with a proper rating should be used. A cord rated for less amperes or watts than the appliance rating may overheat. Care should be taken to arrange the cord so that it will not be tripped over or pulled.
 • DO NOT attempt repairs yourself; return the appliance to the manufacturer for service or discard.
 • Close supervision is necessary when an appliance is used by or near children. Keep out of reach of young children.
 • Always unplug product from outlet before putting on or taking off parts, and before cleaning.

REGULATORY STATEMENTS

FCC Compliance Statement: This equipment has been tested and found to comply with the limits for a Class B digital device, pursuant to part 15 of the FCC Rules. These limits are designed to provide reasonable protection against harmful interference in a residential installation. This equipment generates, uses and can radiate radio frequency energy and, if not installed and used in accordance with the instructions, may cause harmful interference to radio communications. However, there is no guarantee that interference will not occur in a particular installation. If this equipment does cause harmful interference to radio or television reception, which can be determined by turning the equipment off and on, the user is encouraged to try to correct the interference by one or more of the following measures:
 • Reorient or relocate the receiving antenna.
 • Increase the separation between the equipment and receiver.
 • Connect the equipment into an outlet on a circuit different from that to which the receiver is connected.
 • Consult the dealer or an experienced radio/TV technician for help.

Caution: Any changes or modifications to this device not explicitly approved by manufacturer could void your authority to operate this equipment. This device complies with part 15 of the FCC Rules. Operation is subject to the following two conditions: (1) This device may not cause harmful interference, and (2) this device must accept any interference received, including interference that may cause undesired operation. This equipment complies with FCC RF radiation exposure limits set forth for an uncontrolled environment. This device and its antenna must not be located or operating in conjunction with any other antenna or transmitter. The device has been evaluated to meet general RF exposure requirement. The device can be used in portable exposure condition without restriction. Industry Canada Compliance Statement.

This device complies with Industry Canada license-exempt RSS standard(s).

Operation is subject to the following two conditions: (1) This device may not cause interference, and (2) This device must accept any interference, including interference that may cause undesired operation of the device.

The device has been evaluated to meet general RF exposure requirement. The device can be used in portable exposure condition without restriction.

Le présent appareil est conforme aux CNR d'Industrie Canada applicables aux appareils radio exempts de licence. L'exploitation n'est autorisée que dans les conditions suivantes:

(1) L'appareil ne doit pas produire de brouillage, et
 (2) l'utilisateur de l'appareil doit accepter tout brouillage radioélectrique subi, même si le brouillage est susceptible d' compromettre le fonctionnement.

L'appareil a été évalué pour répondre aux exigences générales d'exposition aux RF. L'appareil peut être utilisé dans une condition d'exposition portable sans restriction.

PRODUCT REGISTRATION

PLEASE DO NOT DISREGARD Ecotech Marine WARRANTY REGISTRATION

IMPORTANT: Registration of this Ecotech Marine product must be completed within thirty (30) days from the date of purchase for the one (1) year Warranty Period to become effective. Otherwise, the Warranty Period for this Ecotech Marine product is thirty (30) days. REGISTRATION: Your product can be registered in any of the following ways: Website: To register online, visit <http://www.ecotechmarine.com/> Choose the 'Support' link at the top of the page. Then, select the 'Warranty Registration' link to register your product.

Some states do not allow the exclusion or limitation of incidental or consequential damages, so the above exclusions may not apply to you. Ecotech Marine's warranty and policy is governed by the laws of the State of Pennsylvania, excluding the conflict of laws principles and excluding the provisions of the United Nations Convention on Contracts for the International Sale of Goods. This warranty gives you specific legal rights, and you may also have other rights, which vary from state to state.

TECHNICAL SUPPORT: This limited warranty is neither a service nor a support contract. Information about Ecotech Marine's current support offerings and policies can be found at <http://support.ecotechmarine.com>.

LIMITED WARRANTY

Ecotech Marine warrants to the original purchaser only that the Ecotech Marine Product will be free from defects in material and workmanship under normal use for a period of thirty (30) days from the date of purchase.
 of either one (1) year from the date of purchase – if the product is properly registered through the registration process below provided that the product is installed and used properly and consistent with the product manual. No representation or warranty by any Ecotech Marine salesperson, dealer, agent representative, employee, or any other individual or entity acting or purporting to act on behalf of Ecotech Marine, shall be binding upon Ecotech Marine other than as expressly set forth herein. This limited warranty applies only to the original purchaser and is not transferable from the original consumer purchaser. In the event of a limited warranty claim, proof of purchase will be required. Ecotech Marine's warranty shall not apply: (i) to any damaged Ecotech Marine Product that has been subjected to accident, misuse, neglect, alteration, acts of God, improper handling, improper transport, improper storage, improper use or application, improper installation, improper testing or unauthorized repair, operation outside recommended parameters (as described in the applicable product manual, for example, damage from saltwater spray or heat), power fluctuation or failure, subject to abnormal physical or electrical stress, use of incompatible products, non-approved power supplies/connections, or similar circumstances (ii) to any Ecotech Marine Product where product been exposed to water or (iii) to cosmetic problems or defects that result from normal wear and tear under ordinary use, and do not affect the performance or use of the product. Ecotech Marine's warranty applies only to a product that is manufactured by or for Ecotech Marine and identified by the Ecotech Marine trade name or product identification logo affixed to the product. If you notice a problem with your Ecotech Marine Product, do not attempt to repair it yourself. Any attempts at self-repair shall void this limited warranty. Ecotech Marine shall not be held liable for damage to any aquarium, aquarium life forms, or other personal objects due to improper use, failure, or malfunction of the device. If the product develops a covered defect within the one-year period, Ecotech Marine will, at its option, either repair or replace the Ecotech Marine Product without charge, provided that the Ecotech Marine Product is returned during the warranty period. NOTE: FOR THE ONE (1) YEAR WARRANTY TO BECOME EFFECTIVE, THE PRODUCT TO WHICH THIS LIMITED WARRANTY RELATES MUST BE REGISTERED WITHIN THIRTY (30) DAYS OF PURCHASE. INSTRUCTIONS FOR REGISTRATION ARE INCLUDED BELOW. OBTAINING WARRANTY SERVICE: If this product proves defective during the Warranty Period, contact Ecotech Marine Support (at the address listed below) for instructions on how to obtain warranty service.

Street Address: Ecotech Marine 999 Postal Rd, Allentown, Pennsylvania 18109 Phone: (610) 954-8480

Online Support System: <http://support.ecotechmarine.com>

Please be prepared with your product model and serial number, as well as a proof of purchase, DATED PROOF OF ORIGINAL PURCHASE IS REQUIRED TO PROCESS WARRANTY CLAIMS. REGISTRATION OF YOUR PRODUCT SATISFIES THE PROOF OF PURCHASE REQUIREMENT. If you are requested to return your product to Ecotech Marine, you will be given a Return Materials Authorization (RMA) number. You are responsible for properly packaging and shipping your product to Ecotech Marine, this includes the cost of shipping and any applicable insurance (both to and from Ecotech Marine's factory). Ecotech Marine is not responsible for, and this limited warranty does not cover, damage to products incurred in shipping. Please take efforts to package your product properly. You must include the RMA number and, if the product is not registered a copy of your dated proof of original purchase when returning your product. Products received without an RMA number and, if applicable, dated proof of original purchase will be rejected. Do not include any other items with the product that you are returning to Ecotech Marine.

Repairs or replacements not covered under this limited warranty will be subject to charge at Ecotech Marine's then-current rates. Ecotech Marine DISCLAIMS ALL OTHER WARRANTIES WHETHER ORAL OR WRITTEN, EXPRESS OR IMPLIED, TO THE FULLEST EXTENT ALLOWED BY APPLICABLE LAW. NO IMPLIED WARRANTY OF FITNESS FOR A PARTICULAR PURPOSE OR MERCHANTABILITY SHALL APPLY EXCEPT AS REQUIRED BY APPLICABLE LAW. ECOTECH MARINE DOES NOT AUTHORIZE ANY PERSON OR BUSINESS ENTITY, INCLUDING ITS AUTHORIZED DEALERS, TO CREATE FOR IT ANY OBLIGATIONS, LIABILITIES, OR OTHER WARRANTIES IN CONNECTION WITH THIS PRODUCT. ALL WARRANTIES ARE VOID IF THERE IS DAMAGE TO THE ECOTECH MARINE PRODUCT THAT IS NOT A RESULT OF A DEFECT IN THE MATERIALS OR WORKMANSHIP. THE SOLE AND EXCLUSIVE REMEDY FOR ALL CLAIMS THAT YOU MAY HAVE ARISING OUT OF OR IN CONNECTION WITH YOUR USE OF THIS PRODUCT, WHETHER MADE OR SUFFERED BY YOU OR ANOTHER PERSON AND WHETHER BASED IN CONTRACT OR TORT, SHALL BE REPAIR OR REPLACEMENT OF THE PRODUCT. IN NO EVENT WILL ECOTECH MARINE BE LIABLE TO YOU OR ANY OTHER PARTY FOR ANY DIRECT, INDIRECT, GENERAL, SPECIAL, INCIDENTAL, CONSEQUENTIAL, EXEMPLARY OR OTHER DAMAGES ARISING OUT OF THE USE OR INABILITY OF TO USE THE PRODUCT INCLUDING, WITHOUT LIMITATION, DAMAGES FOR LOSS OF BUSINESS PROFITS, BUSINESS INTERRUPTION, LOSS OF INFORMATION OR ANY OTHER PECUNIARY LOSS, DAMAGE TO YOUR AQUARIUM OR ANY AQUARIUM INHABITANTS), OR FROM ANY BREACH OF WARRANTY, EVEN IF ECOTECH HAS BEEN ADVISED OF THE POSSIBILITY OF SUCH DAMAGES. IN NO CASE SHALL ECOTECH'S LIABILITY EXCEED THE AMOUNT YOU PAID FOR THE PRODUCT. IF YOU DISAGREE WITH THESE TERMS AND CONDITIONS DO NOT USE THE ECOTECH PRODUCT.

RF Exposure Statement

The user is cautioned to maintain a 20cm (8 inch) from the product to ensure compliance with RF exposure requirements. European Union - Disposal Information. According to local laws and regulations, your product should be disposed of separately from household waste. When this product reaches its end of life, take it to a collection point designated by local authorities. Some collection points accept products for free. The separate collection and recycling of your product at the time of disposal will help conserve natural resources and ensure that it is recycled in a manner that protects human health and the environment. CE Declaration of Conformity

The equipment complies with the Radio Equipment Directive 2014/53/EU.

The equipment meets the following conformance standards:

EN 300 328, EN 301 489-1, EN 301 489-17, EN 62479, EN 60950 Original Declaration of Conformity Can Be Obtained From:

<http://support.ecotechmarine.com>

Ecotech Marine Versa Dosing Pump

Model Number: VXi

FCC ID: VKB271833

IC: 7349A-271833



FCC Statement

This equipment has been tested and found to comply with the limits for a Class B digital device, pursuant to part 15 of the FCC Rules. These limits are designed to provide reasonable protection against harmful interference in a residential installation. This equipment generates, uses and can radiate radio frequency energy and, if not installed and used in accordance with the instructions, may cause harmful interference to radio communications. However, there is no guarantee that interference will not occur in a particular installation. If this equipment does cause harmful interference to radio or television reception, which can be determined by turning the equipment off and on, the user is encouraged to try to correct the interference by one or more of the following measures:

- Reorient or relocate the receiving antenna.
- Increase the separation between the equipment and receiver.
- Connect the equipment into an outlet on a circuit different from that to which the receiver is connected.
- Consult the dealer or an experienced radio/TV technician for help.

Caution: Any changes or modifications to this device not explicitly approved by manufacturer could void your authority to operate this equipment.

This device complies with part 15 of the FCC Rules. Operation is subject to the following two conditions: (1) This device may not cause harmful interference, and (2) this device must accept any interference received, including interference that may cause undesired operation.

Radiation Exposure Statement

This equipment complies with FCC radiation exposure limits set forth for an uncontrolled environment. This equipment should be installed and operated with minimum distance 20cm between the radiator and your body.

This transmitter must not be co-located or operating in conjunction with any other antenna or transmitter.

ISED Statement

- English: This device complies with Industry Canada license - exempt RSS standard(s). Operation is subject to the following two conditions: (1) This device may not cause interference, and (2) This device must accept any interference, including interference that may cause undesired operation of the device.

The digital apparatus complies with Canadian CAN ICES - 3 (B)/NMB - 3(B).

- French: Le présent appareil est conforme aux CNR d'Industrie Canada applicables aux appareils radio exempts de licence. L'exploitation est autorisée aux deux conditions suivantes: (1) l'appareil ne doit pas produire de brouillage, et (2) l'utilisateur de l'appareil doit accepter tout brouillage radioélectrique subi, même si le brouillage est susceptible d'en compromettre le fonctionnement.

l'appareil numérique du ciem conforme canadien peut - 3 (b) / nmb - 3 (b).

This device meets the exemption from the routine evaluation limits in section 2.5 of RSS 102 and compliance with RSS 102 RF exposure, users can obtain Canadian information on RF exposure and compliance.

cet appareil est conforme à l'exemption des limites d'évaluation courante dans la section 2.5 du cnr - 102 et conformité avec rss 102 de l'exposition aux rf, les utilisateurs peuvent obtenir des données canadiennes sur l'exposition aux champs rf et la conformité.

This equipment complies with Canada radiation exposure limits set forth for an uncontrolled environment. This equipment should be installed and operated with minimum distance 20cm between the radiator & your body.

Cet équipement est conforme Canada limites d'exposition aux radiations dans un environnement non contrôlé. Cet équipement doit être installé et utilisé à distance minimum de 20cm entre le radiateur et votre corps.

This device meets the exemption from the routine evaluation limits in section 2.5 of RSS 102 and compliance with RSS 102 RF exposure, users can obtain Canadian information on RF exposure and compliance.

cet appareil est conforme à l'exemption des limites d'évaluation courante dans la section 2.5 du cnr - 102 et conformité avec rss 102 de l'exposition aux rf, les utilisateurs peuvent obtenir des données canadiennes sur l'exposition aux champs rf et la conformité.

This equipment complies with Canada radiation exposure limits set forth for an uncontrolled environment. This equipment should be installed and operated with minimum distance 0mm between the radiator & your body.

Cet équipement est conforme Canada limites d'exposition aux radiations dans un environnement non contrôlé. Cet équipement doit être installé et utilisé à distance minimum de 0mm entre le radiateur et votre corps.