



2.4GHz Wireless *USB* TV Box



UTV240

User's Manual

Contents

1. Introduction -----1

2.Connection and operation -----4

3.USB TV driver and software installation-----7

4.Application software instruction -----15

5.Remote control instruction -----21

6.Product placing and retransmitting -----23

7.Precautions -----27

8.Troubleshooting -----28

1. Introduction

1.1 Brief introduction

Combining 2.4GHz wireless technic and USB TV box technic, UTV240 is known as a Hi-Tech product. Advanced 2.4GHz wireless transmission technic effectively realizes CATV or A/V signal wireless transmission in your house. Connected to your laptop or PC via USB cable, you will be satisfied with enjoying your favorite channels and Hi-Fi A/V programs while using computer. Because of high speed USB2.0 port and progressive scanning technic, USB TV presents stable and sharp pictures. Full function remote control makes it easier to watch TV on computer. Attached with multi-function software, you can sequence and rename channels according to your favorite. What's more, some dynamic data can also be recorded on your computer from recorder, video camera, web camera or other video devices and stored onto the hard disc, to burn VCD, SVCD, and DVD disc via special software. With scheduled recording function, you will not miss any highlights. High-quality static picture capturing function converts every highlight into digital album, and you can share with your friends via uploading to the web.

1.2 Features

- There are 4 channels ,and the frequency scope ranges from 2.400GHz to 2.483GHz.
- To increase the flexibility and reliability,we prepare four selectable channels (2.414GHZ, 2.432GHz, 2.450GHz, 2.468GHz).
- Support all frequency TV wireless transmission and VCD , DVD signal transmission.
- 433MHz IR remote return transmission, easy to operate.
- IR transmitting, no extension cable needed.
- Compatible with NTSC/PAL video transmission and stereo audio transmission.
- TV wall function to browse programs easily.
- Channel list to sequence and rename channels at will.
- Customizable brightness, contrast, sharpness, hue and saturation.
- Static picture capturing and real time recording function.
- Scheduled recording function to catch every highlight.
- MPEG1/MPEG2 compressed format, convenient for recording disc.
- Available shortcut key to control your TV like operating computer.

1.3 Specifications

- 1) TXV2408 wireless A/V transmitter:
 - Power input: DC 5V \pm 300mA
 - Radio-frequency input: 47-870MHz
 - Video input: 1Vp-p(PAL/NTSC)
 - Audio input: 2Vp-p (L/R)
 - 2.4GHz channel: Four channels (2414,2432,2450,2468MHz)
- 2) UTV324 wireless USB TV box:
 - USB2.0 port
 - Video input: 1Vp-p(PAL/NTSC)
 - Audio input: 1Vp-p (L/R)
 - Audio output: 2Vp-p (L/R)
 - 2.4GHz channel: Four channels (2414,2432,2450,2468MHz)

1.4 System requirements

- Operation system: Windows XP (SP2), Vista
- Pentium2.4G/ Centrino1.4G
- DirectX 9.0 VGA card or higher version (more than 64MB)
- Capacity of 512M or higher
- Hard disc capacity of 1G or higher
- USB2.0 extension port

1.5 Application

- TV/AV wireless transmission, connected to laptop and PC.
- Large-scale conference video system and multimedia teaching.
- Security system, real time spot wireless monitoring.

1.6 Common accessories

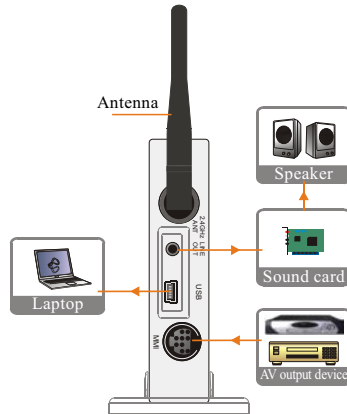
UTV240 user's manual -----1pcs
Remote control -----1pcs
Power adapter -----1pcs
MMI AV cable -----1pcs
AV cable -----1pcs
MINI USB cable& audio cable -----1pcs
Software disc -----1pcs

1.7 Optional accessory

MMI S-Video cable(DIN 200S) -----1pcs

2. Connection and operation

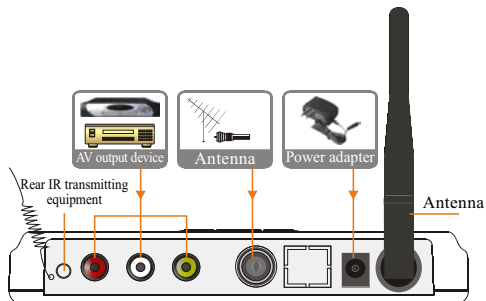
2.1 UTV324 connection illustration



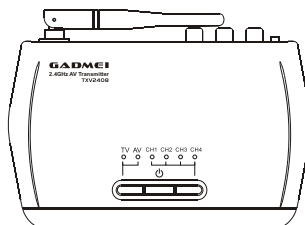
★Note: Refer to Part4 (software instruction)to get UTV324 operation manual.

2.2 TXV2408 connection illustration and panel operation instruction:

Rear panel:

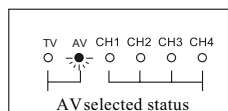
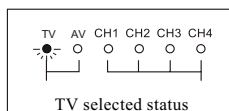


Front panel:

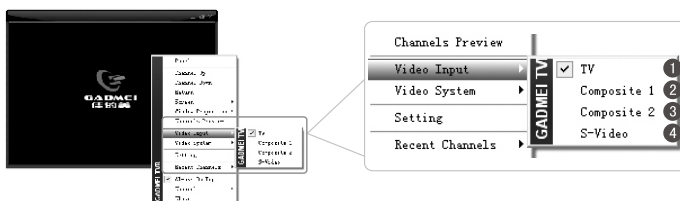


1) TV/AV input source selecting:

Freely switch to TV/AV signal or transmit to receiver via 2.4GHz channels (picture1). Only when the input source of transmitter goes with “video input” of receiver, can the signal be transmitted normally.

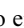


★Note: Receiver UTV324 input source selecting instruction: Right-click popup menu will be on UTV324 software interface when right mouse down. Select the item as picture below:

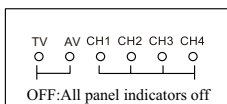
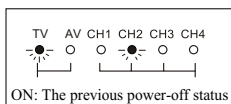


- ① TV: Switch to TV input of TXV2408(TV);
- ② Composite 1: Switch to AV input of TXV2408(AV);
- ③ Composite 2: Switch to audio input of UTV324;
- ④ S-Video: Switch to S-Video input of UTV324.

2) Power on/off

Press  to enter or exit standby status.

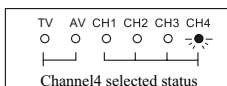
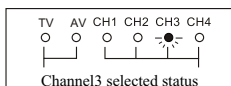
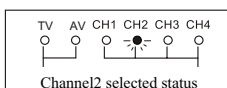
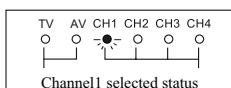
Power on/off status panel indicator as below:



3) Channel selecting

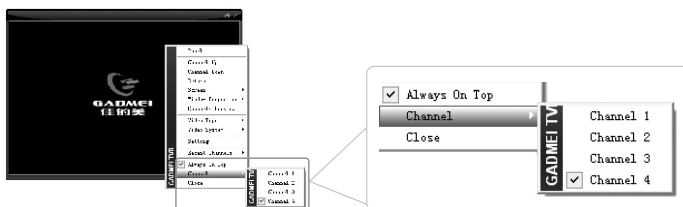
Press CH switch to switch the four 2.4GHz channels.

Channels selected status indicator as below:



Note: Only when the receiver and the transmitter are in the same channel, can the A/V signal be normally transmitted.

For example: If select CH4 via the transmitter (the CH-4 indicator is on), meanwhile open the software of the receiver, right click the mouse, and the right key menu will pop up. Then select "source selecting" to switch to CH4. Now the receiver and the transmitter are sharing the same channel at the same time, as the picture below:



Note:

If wireless LAN like 802.11(WiFi device) is used in your house, please select channel1 or channel4 and adjust 2.4GHz antenna to avoid its interruption.

Avoid the external interruption via switching channels when the program is externally interrupted.

3. USB TV driver and software installation

3.1 USB driver installation

For better using, please upgrade your system to Windows XP(SP2) or Vista.

Driver of USB2.0 TV box series can be installed automatically or manually. Note: Prior to driver installation, please install DirectX9.0 or higher version first.

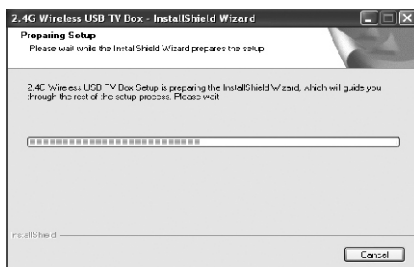
Automatic installation:

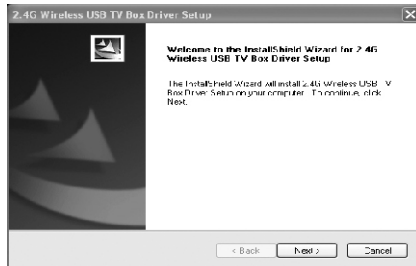
Connect UTV324 wireless USB TV box to the USB port of the host via USB cable, place the software disc into the CD-ROM driver, the guide menu of installing the application software will automatically pop up. If auto run function is terminated by your system, you need to browse the disc and double click "autorun.exe", the following picture will pop up:



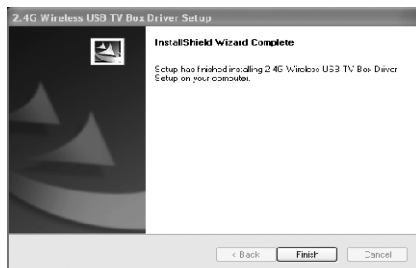
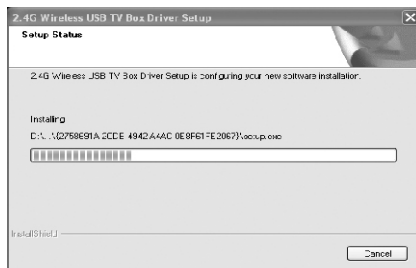
Take Windows XP as an example to introduce the installation of the driver:

- 1) Automatic installation as below:
Click "Driver", as the following picture:

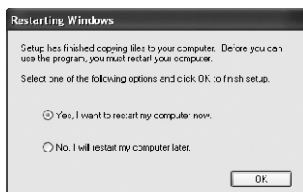




Click “Next”, system installation as the following picture:



Click “Finish”.



Click "Yes, restart immediately" and then click "OK".

Manual installation:

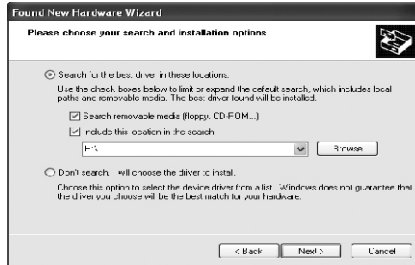
After correctly install the hardware, when power on to start Windows, the system will detect new hardware, noting "Found New Hardware Wizard". As the following picture:



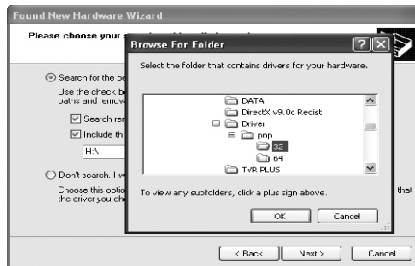
Select option3, and then click "Next", as the following picture:



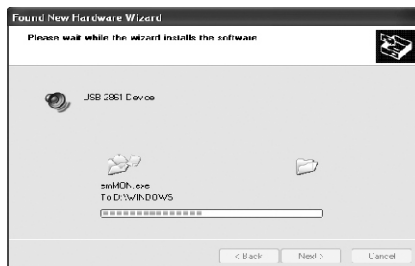
Select option2, and then click “Next”, as the following picture:



Click “Browse” to select the right saving path, as the following picture:

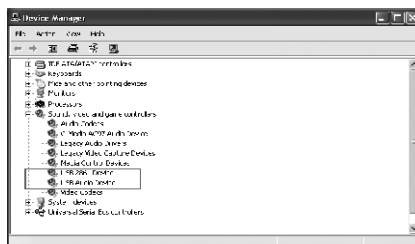


Click “Ok” and then click “Next”, as the following picture:





Then click “Finish” to complete driver installation:



Check whether “USB 2861 Device” is added to the device manager. After confirming, the application software installation will begin.

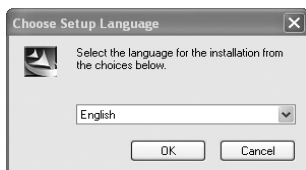
3.2 Software installation

Next we will introduce TVR PLUS installation (prior to installation of USB2.0 TV box software, please install “DirectX9.0” or higher version first)

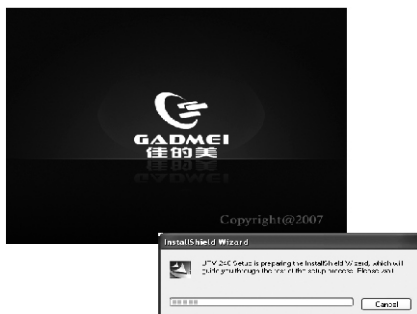
Place the disc of GADMEI USB2.0 TV box software into the CD-ROM driver and the installation guide menu of the application software will pop up. If auto run function is terminated by your system, you need to browse the disc and double click “autorun.exe”, the following picture will pop up:



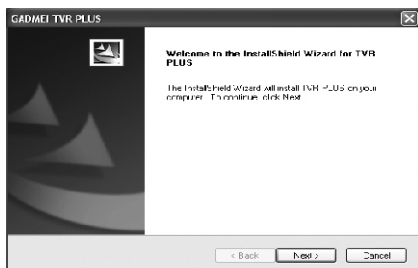
Click “Software” button to enter TVR PLUS installation interface, as the following picture:



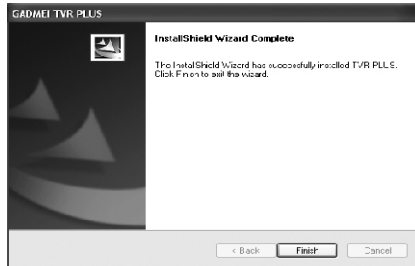
The installation procedure will note you to select the desired language, and then click “Ok”, as the following picture:



After automatic installation, the following picture will appear:



After finishing automatic installation, the following picture will appear:



Click "Finish" to complete software installation.

Note: After installing the software driver, a small icon (TTrayIcon) will appear on the right down corner of your computer. (Make sure not to close the icon which is for remote control use) If restart TTrayIcon after exiting, please click Schedule TV in the driver installation list.

The TTrayIcon includes (the following picture):



4. Application software instruction

The main interface of the software, as below:



Instruction for common keystrokes:



Consecutively perform the following operation: Open "help" file, minimize and close.



Tuning box: Click to open or hide tuning box.



Digital input keystrokes: The left arrow is to decrease channels and the right arrow is to increase channels.



For adjusting volume: Drag mouse to quickly adjust volume.



Scheduled recording setup: Click to open the scheduled recording setting window.



Function attribute: Click to open the attribute page.



Channel scanning: Click to access to channel scanning.



Picture capture: Click to capture static picture.



TV wall: For browsing channels.



Hyperlink to company website.



NICAM function keystroke (not available by this version).



A/V files playing progress bar.



Favorite: Click to open or hide it.



Play



Pause



Record



Stop



Fast backward




Fast forward



Input source switch: among TV, video1, video2 and S-Video.

4.1 Device instruction


Click  to open “function attribute” page, as below:



- Country/area: Selecting country/region is to select frequency list of your area, please correctly select you country/region.
- Video system: When video or S-Video signal input, you can select video system according to the input source.(Note: If the selected system does not go with the input source, the image will be abnormal.)
- Input source: Respectively TV, video or S-Video.
- Video device: Please select “USB 2861 Device”.
- Audio device: The default selection is the first audio device.
- Audio playing: Audio input channel, generally select “Line In”.
- Audio recording: Refer to audio playing setup.

4.2 Tuning instruction



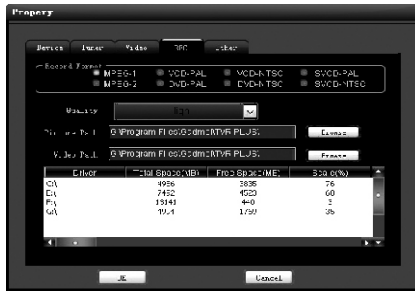
- Antenna: Wireless/cable.
- Channel list: Display the current channel information for editing channel skip, channel name and frequency.
- Import frequency list: Import the stored channel list as the current channel list.
- Export frequency list: Save the current frequency list for any time use.
- Fine tuning: To adjust for better image effect via fine tuning.
- Auto-search: Click to enter auto-search, stop when press again.
-  Sequencing: Sequence manually.

4.3 Video instruction



- Window scale: Adjusting length and width scale when dragging the video window. The default scale is any scale.
- Image adjusting: The user can adjust brightness, contrast, sharpness, chroma and saturation according to his or her favorite. Click "default value" to restore to the default value.
(Note: Chroma is valid only when it is N system.)

4.4 Recording instruction




- Recording format: To select the record format.
- Recording quality: Three options: high, medium, low
- Image path and video path: To display the saving path of image and video and you can change the saving path as well.
- Hard disc information list.

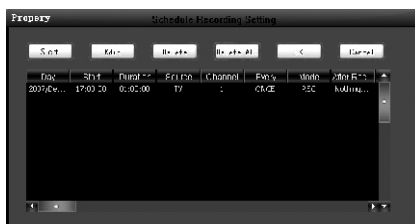
4.5 Other items



- Preview window: When it is picture previewing, the channel picture will pause on the screen for several seconds. Previewing picture is to preview the number of channels.
- Other options: Video desktop (not available for the current version); "Always on the top" to display the playing window on the top; If "deleting previewing file after playing" item is selected, the file is to be deleted after playing.

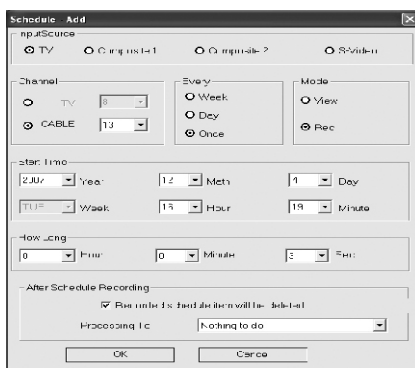
4.6 Scheduled recording:

Click  to open the scheduled recording setting window, as below:



The main keystrokes function:

- Click "Setting": To set new items
- Click "Edit": To modify any selected item
- Click "Delete": To delete the selected item
- Click "All delete": To delete all the items in the list
- Click "OK": To exit the scheduled recording window
- Click "Cancel": To exit the scheduled recording window
- Click "Setup" to open "scheduled recording item setting" and then set the new item, as below:

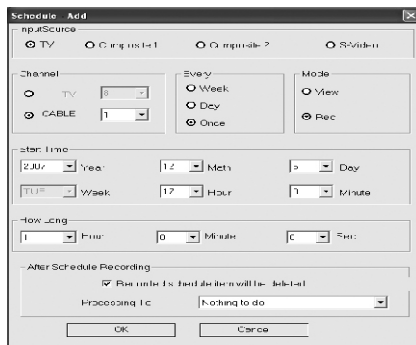


- Input source selecting
- Select the channel number to be recorded or watched
- Select the time or way of watching
- Select recording or watching
- The starting time of performing the current task
- The total time of performing the current task
- Work setting after the current task is performed can be automatically recorded.

After setting, click “OK” to enter scheduled recording setting list.
Exit “scheduled recording setting” menu to finish setting.

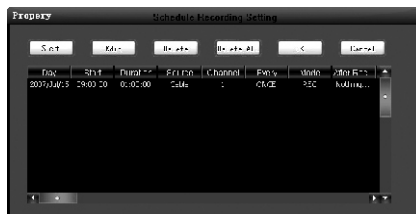
Example demonstration:

If you want to schedule-record programs of CATV-1 and the set scheduled recording time is 1 hour, as below:



★Note: The scheduled recording time should not be the past time, but should be the future time.

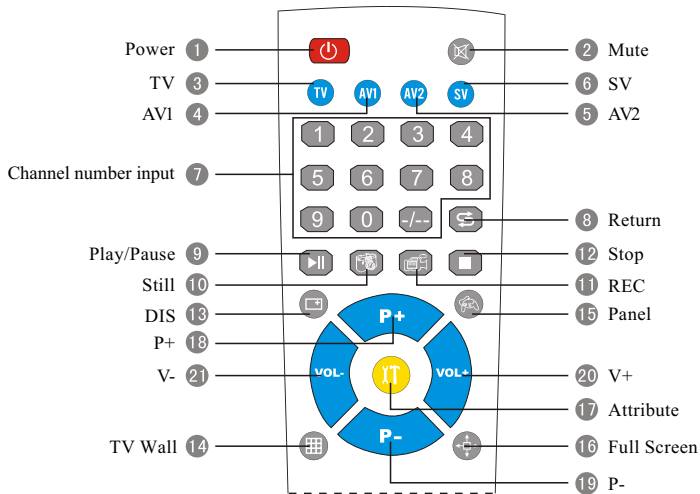
Click “OK” to show the following picture:



Click “OK” to finish scheduled recording setting.

5. Remote control instruction

5.1 Remote control panel



5.2 Remote control and shortcut keys instruction

- 1 Power: To power on/off the application program TVR PLUS. Right click the TTrayIcon and select "remote off". TVR PLUS and PC can be powered off simultaneously.

(Note: Every time when you select remote off function, you should select "remote off" in the TTrayIcon, as the right picture.)



- 2 Mute: The sound will disappear when press for the first time and be normal when press again.
- 3 TV: Input source switch to TV. Note: Connect TV cable to the input port of transmitter TXV2408.
- 4 AV1: Input source switch to AV1. Note: Connect video cable to the input port of transmitter TXV2408.
- 5 AV2: Input source switch to AV2. Note: Connect video cable to MMI AV input port of receiver UTV324.
- 6 SV: Input source switch to SV. Note: Connect SV cable to MMI S-Video input port of receiver UTV324.

- ⑦ Channel number input: Press the numeric keys and shortly wait. Then switch to your selected channels. The system needs time to confirm your input number.
- ⑧ Return: Return to the previous selected channel.
- ⑨ Play/Pause: Switch between play and pause.
- ⑩ Still: Capture a still picture by every time pressing.
- ⑪ REC: Press to begin to record and press again to stop.
- ⑫ Stop: Return to standard playing status when in recording or TV wall status. Stop files playing when press this key in playback status.
- ⑬ DIS: Display the current signal information.
- ⑭ TV Wall: Picture browsing.
- ⑮ Panel: Hide or display the main interface.
- ⑯ Full Screen: Enter or exit full screen.
- ⑰ Attribute: Hide or display the function attribute interface.
- ⑱ P+: Press this key to increase channels when in TV status.
- ⑲ P-: Press this key to decrease channels when in TV status.
- ⑳ V+: Increase volume.
- ㉑ V-: Decrease volume.

Shortcut keys instruction:

Function	Shortcut key	Function	Shortcut key
Numeric keys	0-9	Exit full screen or TV wall	Esc
CH+	↑	CH-	↓
VOL+	→	VOL-	←
Mute	M	OSD	O
CH scanning	S	TV wall	T
Play/pause	P	Return	L
Active main interface window	A	Record	R
Fast forward	F	Fast backward	B
Skip to the first channel	Home	Skip to the last channel	End
Help	F1		

6. Product placing and retransmitting

6.1 Transmitter TXV2408 placing

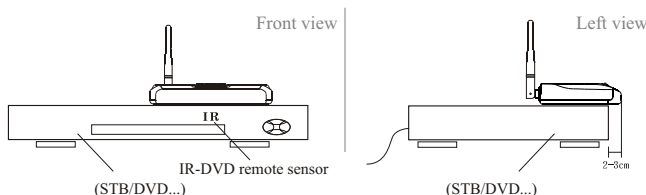
1) CATV watching:

When watching CATV, you only need to connect power to CATV signal and place the unit in the proper position. Make sure no obstacle around.

2) A/V devices like DVD, STB watching:

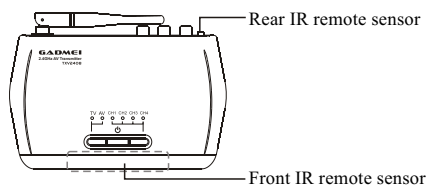
Method one: Use the front IR transmitting device

Put the transmitter onto the A/V device and make sure IR transmitting sensor is 2-3 cm forward, right towards the IR receiver sensor of the A/V device.



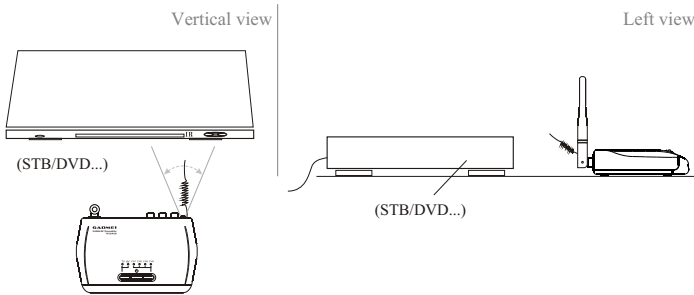
Note:

- Generally there is “infrared remote control” or “IR” on the IR receiving sensor of STB or DVD, please put the IR transmitting sensor towards it.
- There are two IR remote sensors (respectively front and rear) as below:



Method two: Use the rear IR transmitting device

Put the transmitter in front of the A/V device and make the rear IR remote sensor right towards that of the A/V device. Make sure no obstacles between them.

**Note:**

If permitted, place like the above for better effects.

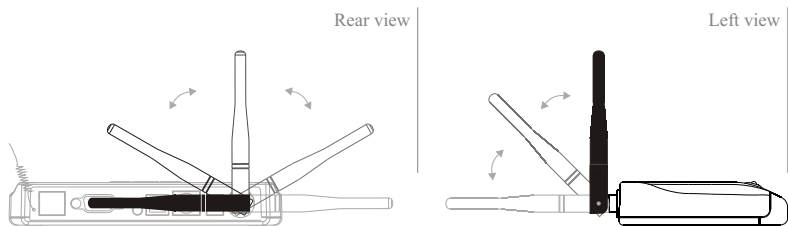
6.2 UTV324 placing

Follow the connection illustration to connect USB cable and then you can use UTV324. Make sure the IR sensor is right towards the remote control.

6.3 Antenna placing

1) 2.4GHz antenna using

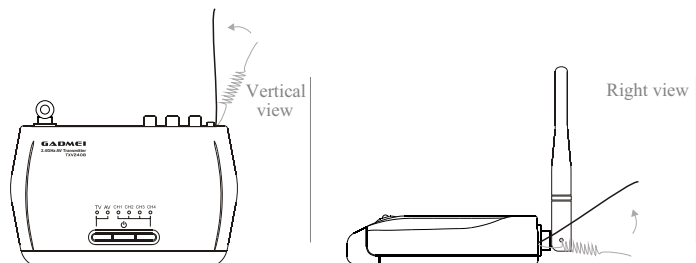
2.4GHz antenna is all-direction antenna with multi-angle rotating function. When interruption appears on the image (such as snow spot, WIFI), please adjust the 2.4GHz antenna for better effect.



2) 433MHz antenna using

Pay attention to the place of 433MHz antenna and make sure no obstacle around (especially metallic obstacle which seriously affects signal retransmission).

Stretch out the antenna and place as below:



6.4 Retransmission function

If the output source is the video source with remote control function like STB,DVD, video camera, the original matched remote control of the unit can be directly used to control these video sources. It is not necessary to operate at the side of transmitter.

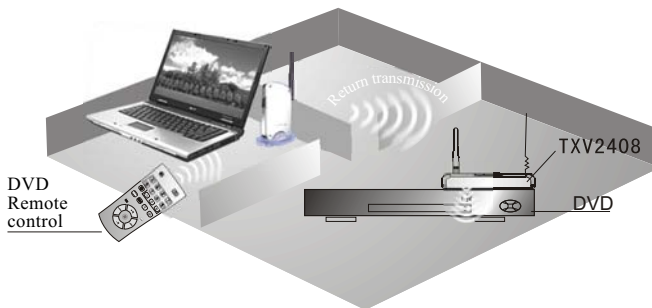
Step one:

Refer to connection illustration, and make sure transmitter is well connected and no obstacle between IR sensor of transmitter and that of video source.

Step two:

If the remote control is pointed towards UTV324 receiver, you can operate the video source of TXV2408.

Note: Please try to stretch out the 433MHz antenna of transmitter and put them far from the A/V cable, to make sure no transmission interruption. If remote control is invalid, please check the place of antenna when the transmitter and receiver are in the right place.



(Return transmission illustration)

7. Precautions

7.1 Normal phenomenon

- Interruption appears while moving. Please move to a fixed place to watch.
- As adopting RF control technic, there will be momentary interruption in the picture when using remote control.
- The transmission distance varies according to the surroundings; the distance of ordinary house is about 10-20 meters. But if the wall is of iron and concrete, it will largely muffle the signal (can not receive signal or shorten receiving distance)

7.2 Using precautions

- 2.4GHz domestic appliance (such as micro oven, 2.4GHz cordless phone, Bluetooth earphone, or 802.11b/g wireless network) may affect the quality of receiving even cause no signals receiving. If affected by micro oven, the receiver should be put far from it. As for other interruptions, you can reset the signal channel of the transmitter and receiver.
- The transmitter should be put on a higher place to get better transmission effect when there is no obstacle around the transmitting antenna, thereby the transmission distance will become longer. It can also reduce the interruption from our moving when the receiver is placed higher.

8. Troubleshooting

Troubleshooting1: Indicator invalid, no picture.

Solutions: Check whether transmitter and receiver are powered on.
Change the transmission channel of the receiver (refer to operation manual/channel switch).
Adjust the place of transmitter and receiver (refer to connection illustration).

Troubleshooting2: Remote control retransmission invalid.

Solutions: Check whether the transmitter is right connected (refer to connection illustration of transmitter).
Adjust the antenna place of transmitter and receiver (refer to antenna placing).

Troubleshooting3: Image interrupted

Solutions: Change the transmission channel of receiver (refer to channel selection).
Adjust the place of transmitter and receiver (refer to connection and installation).

FCC NOTE:

THE MANUFACTURER IS NOT RESPONSIBLE FOR ANY RADIO OR TV INTERFERENCE CAUSED BY UNAUTHORIZED MODIFICATIONS TO THIS EQUIPMENT. SUCH MODIFICATIONS COULD VOID THE USER'S AUTHORITY TO OPERATE THE EQUIPMENT.