

网络相框



PF8070

User's Manual

5. Troubleshooting

Problem	Solutions
No display on screen and can not start up	Check whether the power is connected well, and whether the device is powered on.
No sound	Whether the parameter of volume is set to 0
Can not read Media Card	Check whether Media card is inserted well.
The remote control is invalid	The distance between remote control and the device is too long or the angle is more than 60°.
	Check whether the battery is poor contact or in low power.
Background music is invalid (when the user selects "default directory")	Check whether there are music files in the default directory.
The picture is dark.	Check the settings of brightness, contrast and chroma (the default value is 50,50 and 50)
Computer is in abnormal condition when disconnect the USB cable	Do not disconnect the USB cable during file importing or formatting.
The actual capacity is less than it is stated (for the version with internal memory only)	The actual capacity is reduced as files for management and applications are included.
Can not access network	Check if IP address is set correctly.

★Note: The LED panel is made up by 561000 pixels with high technology. By chance, there will be some pixel is too high or too dark, but this situation will not effect the actual Digital Photo Frame function.

Contents

1.Precautions-----	1
2.Product Introduction-----	2
2.1 Features-----	2
2.2 Specifications-----	2
2.3 Application-----	3
2.4 Accessories-----	3
2.5 Button Illustration-----	3
2.6 Terminal Illustration-----	4
2.7 Remote Control Illustration-----	5
3.Getting Started-----	6
3.1 Stand-----	6
3.2 Battery Installation-----	6
3.3 Connecting Illustration-----	7
4.Operating Instruction-----	8
4.1 Turn on/off the Digital Photo Frame-----	8
4.2 Wireless network construction and precautions-----	8
4.3 OSD Operating Instruction-----	12
4.4 One Home Operation Instruction-----	13
4.5 My Favorite Operation Instruction-----	14
4.6 Information Browsing Operation Instruction-----	18
4.7 Calendar Operating Instruction-----	18
4.8 Setup-----	19
5.Troubleshooting-----	22

Text&Music: Press [▶II] to switch among Default Directory, Customized and Off.

Background Image: There are three options of Black, Gray and White for setting. To confirm by [▶II], exit by [▲/▼/MENU].

(5) Display

Language: Chinese-English language setup. To confirm by [▶II], exit by [▲/▼/MENU].

Theme color: There are options of Blue, Purple, Red, Pink, Green, Orange, Black and White for setting. To confirm by [▶II], exit by [▲/▼/MENU].

Brightness, Contrast, Chroma: The default value is 50, to adjust the value by [◀/▶], exit by [▲/▼/MENU].

(6) Clock & Timer

24-hour Format: Turn On or Off this function by [▶II].

Clock: Press [▶II] to enter Date Setting menu, navigate [◀/▶] for time setting, adjust the value by [▲/▼].

Date: Press [▶II] to enter Date Setting menu, navigate [◀/▶] for time setting, adjust the value by [▲/▼/MENU].

(7) System

System Information: Software Version information. Confirm by [▶II], and exit by [MENU].

Firmware: For software upgrade.

Factory Default: Restore factory settings.

(8) Network

Network information: Display the network connection status.

Flickr: Navigate [◀/▶] and [▶II] to input account and password of Flickr web album in “Identification” and “Password” pages, and select Connect. After connecting successfully, return to the Main Menu and enter Flickr web album in Information Browsing menu.

Google: Please refer to Flickr setup.

Browse Mode: Switch browse mode between Online and Download by [◀/▶]. Select Download means download photos in web album to Downloaded folder and browse them on this device.

★Note: Please refer to Page 11 and 12 for Auto scan and Manual IP setting.

- **Display Ratio:** There are Center, Crop and Stretch in this function. To confirm by [◀/▶], exit by [▲/▼/MENU]. “Center” means display picture in its original size, “Crop” means full-screen display picture in its original size and cut out the unwanted part. “Stretch” means full-screen display picture by changing its original ratio & size.
- **Interval:** There are four options of Slow (25s), Standard (16s), Fast (8s) and Customized for picture slideshow, navigate [▶II] to confirm selected option. Move between hour, minute and second by [▶II] in Customized setting. Then the option is highlighted in green; adjust the value by [◀/▶].
- **Transition:** 11 Transition Effects for option (Random, Top to Bottom, Right to Left, Top&Left to Bottom&Right, Horizontal Door Close, Horizontal Interlace Cross, Vertical Interlace Cross, Fade out & Fade in, Horizontal Blind, Window Path, 16x16 Mosaic). Navigate [▶II] to confirm, and exit by [▲/▼/MENU].
- **Play Sequence:** There are three options of Random, by Name, by Time for play sequence. To confirm by [▶II], exit by [▲/▼/MENU].
- **Photo&Music:** Press [▶II] to switch among Default Directory, Customized and Off.

(2) Movie

Play Sequence: There are three options of Random, by Name, by Time for play sequence. To confirm by [▶II], exit by [▲/▼/MENU].

Repeat: There are three options of Repeat one, Repeat all and Off for setting. To confirm by [▶II], exit by [▲/▼/MENU].

(3) Music

Play Sequence: There are three options of Random, by Name, by Time for play sequence. To confirm by [▶II], exit by [▲/▼/MENU].

Repeat: There are three options of Repeat one, Repeat all and Off for setting. To confirm by [▶II], exit by [▲/▼/MENU].

(4) E-Book









Reading Speed: Speed for turning page. There are four options of Slow, Middle, Fast and User for setting, navigate [▶II] to confirm selected option, and exit by [▲/▼/MENU]. Move between hour, minute and second by [▶II] in Customized setting. Then the option is highlighted in green; adjust the value by [◀/▶].

Font Color: There are four options of Black, Gray, White and Blue for setting. To confirm by [▶II], exit by [▲/▼/MENU].

1. Precautions

Warning

Please read this manual carefully before operating and reserve it for future reference. It will be helpful to you if you encounter any operating problem.

 <p>Avoid exposing this device to water, moisture or high temperature. Do not place it near swimming pool, bathtub or kitchen where it may come in contact with water.</p>	 <p>Clean only with a soft dry cloth; do not use any chemical liquid for cleaning.</p>
 <p>To ensure reliable operation of the device and to protect it from overheating, do not block any ventilation openings.</p>	 <p>Only use attachments/ accessories specified by the manufacturer.</p>
 <p>Do not step on the power cable, plug or adapter to avoid electronic shock.</p>	 <p>Do not attempt to service this device yourself as opening or removing covers may expose you to dangerous voltages or other hazards. Refer all servicing and repairs to qualified service personnel.</p>
 <p>Please unplug this device in the thunderstorm weather or not in use for a long time.</p>	 <p>Do not place it near any heat sources such as radiators, heat registers, stoves or other apparatus (including amplifiers) that produce heat.</p>

2.1 Features

2. Product Introduction

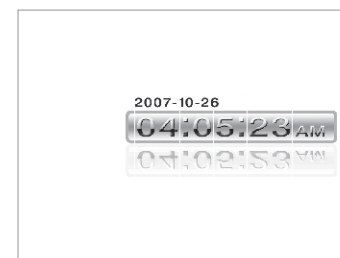
- 8 inch high resolution LCD panel: 800X600 pixel.
- Upnp connection allows users to enjoy family based integrated information services.
- Picture slideshow with multiple transition effects, support picture rotating and zooming.
- Music/video player (JPG/MP3/MPG/AVI/DIVX).
Electronic Calendar& OSD menu display.
- Three-in-one card reader (SD/MMC/MS pro).
- Plug & play by USB 2.0 (OTG) slot, support USB Flash drive.
- Full-functional IR remote control.
-
-

2.2 Specifications

Items		Parameters/Units/ Description
Input voltage (power adapter)		AC100V-240V ~ 50-60Hz
Power input		DC5V --- 2.5A
LCD Specifications	Panel size/Aspect ratio	8inch(4:3)
	Effective viewing area	162.0(W) × 121.5(H)mm
	Brightness	300cd/m ²
	Contrast	300:1
File format supported		MP3/DAT/MPG/AVI/DIVX
Memory card Supported		SD、MMC、MS PRO
Built-in speaker		1W 8Ω
Operating temperature		0 ~ 40℃



- Long press [▶II], the system will turn to Clock Screen Saver. And all the setting is similar to the other function.



4.8 Setup

- Navigate [◀/▶] on device or remote control to select Setup in the Main Menu, enter the Setup function by [▶II].



(1) Photo

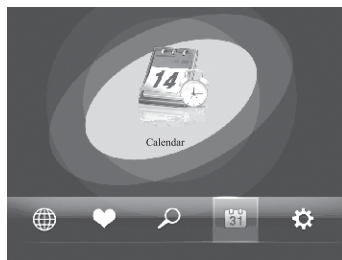
- ① **List:** E-Book list, which shows all .txt files under the TEXT directory.
- ② **Bookmarks:** There are 10 bookmarks for setting.
- ③ **Scroll Time:** The speed of page turning up and turning down. There are four options of Slow, Middle, Fast and Customized for setting.
- ④ **Font Color:** There are four options of Blank, Gray, White and Blue for
- ⑤ **Background Color:** There are three options of Gray, White and Black for setting.
- ⑥ **Text&Music:** Setting music in default folder as the background music during Reading. Copy the music files to Default sub-directory of Music, when choose Default, it plays music in the Default sub-directory. If choose Customized, the system will turn to Music Browser menu by pressing [▶||▶]. Navigate [◀] to enter any sub-directory, confirm by [▶||▶], and exit by [Ⓜ] on remote control or [Ⓜ] on device.

4.6 Information Browsing

- Information browsing is part of Upnp connection. Users can access PC to browse photos, watch video or listen to music. Please refer to My Favorite for operation after connection.

4.7 Calendar

- Navigate [◀/▶] on device or remote control to select Calendar by [▶||▶] in the Main Menu. In Calendar OSD, here shows the Year, Date, Day and Clock, and the main color is blue and black. Navigate [◀/▶] to browse Year, and Month by [▲/▼].



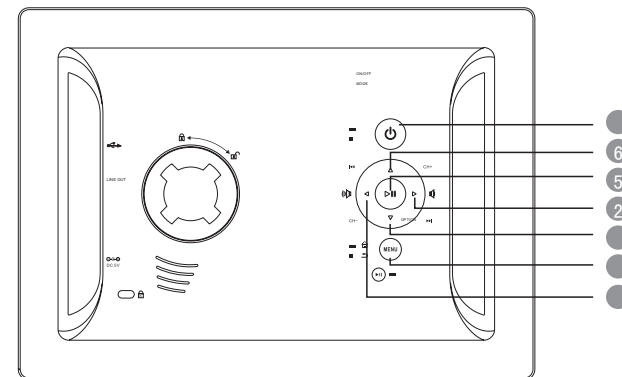
2.3 Application

- A substitute for the traditional film camera, it can help you to save time and money on developing films.
- A powerful advertising media to display your products & services information dynamically.
- A best gift for parents, lover and friends to tell every memorable moment you have experienced.
- A meaningful gift for business partners to show your gracious hospitality.

2.4 Accessories

- Power adapter-----1 piece
- Remote control-----1 piece
- USB Cable-----1 piece
- User manual-----1 piece
- Stand-----1 piece

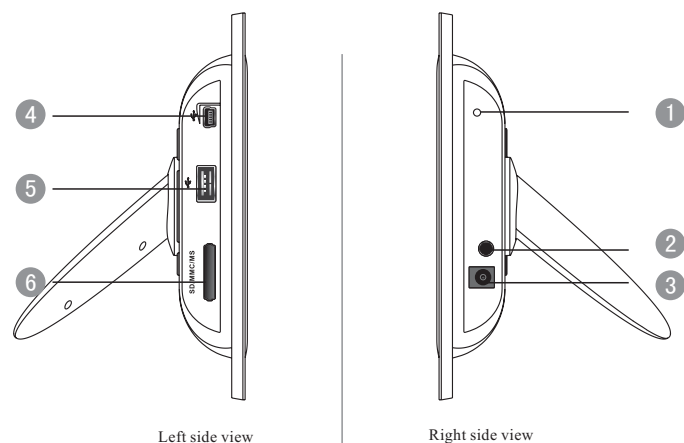
2.5 Button Illustration



- ① [⏻] Power: Long press to turn on/off the device.
- ② [Ⓜ] MENU: BACK: back to the up-level menu.
- ③ [▶||▶] PLAY: a. Press briefly for switching play or pause state in the multi-media function;
b. Long pressing for pop up the setup menu;
c. Press briefly for entering or confirming the selected option.
- ④ [▲] UP: a. Upward select; b. Previous.
- ⑤ [▼] DOWN: a. Downward select; b. Next.

- 6 [◀] LEFT: a. Leftward select; b. volume-.
- 7 [▶] RIGHT: a. Rightward select; b. volume+.

2.6 Terminal Illustration



- 1 Indicator: When the adapter is plugged, the indicator LED will be on. When the adapter is unplugged or this device is powered on, the indicator LED will be off.
- 2 Audio-out: for connecting active speaker.
- 3 DC-IN: power input DC 5V \pm 1.0A.
- 4 USB OTG: USB 2.0 slot, for connecting PC.
- 5 USB HOST: for USB flash drive and USB hard disc. (FAT format supported only)
- 6 SD/MMC/MS: SD/MMC/MS PRO card slot.

★Note: Terminal 4 and 5 can not be used at the same time.

Video

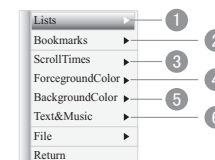
- In My Favorite menu, select Video and press [▶II] to enter video browser OSD, the play list will be showed in tree-structure. (Copy all video files to Video Directory is recommended). Press [▶II] to play a selected video, and exit by [⏏] on remote control or [MENU] on device. During exit processing, you can view the file directory in each path and switch medium.
- In the Movie Browser menu, press [▶II] to play a selected video in full-screen. Navigate [▲/▼] for previous or next video, adjust the volume by [◀/▶], pause by [▶II], and the video information will be shown up.



- During the playing, long press [▶II] for setup menu, navigate [▲/▼] to select options, confirm by [▶II], and exit by [⏏] on remote control or [MENU] on device.

E-book

- In My Favorite menu, select E-book and press [▶II] to enter E-book browser OSD, the text files will be shown in tree-structure. (Copy all .txt files to Text Directory is recommended). Press [▶II] to read a selected .txt file, and exit by [⏏] on remote control or [MENU] on device. During exit processing, you can view the file directory in each path and switch medium.
- During the reading, long press [▶II] for setup menu, navigate [▲/▼] to select options, confirm by [▶II/▶], and exit by [⏏] on remote control or [MENU] on device.

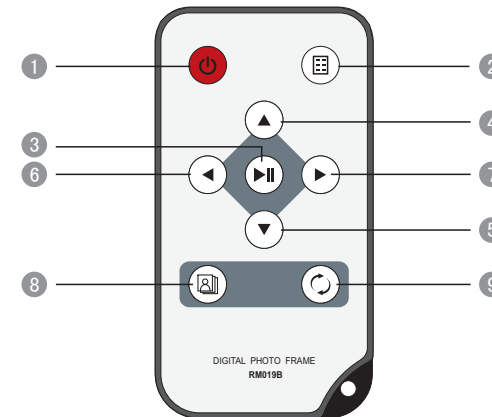


- ③ **Transition effects:** 11 Transition Effects for option (Random, Top to Bottom, Right to Left, Top&Left to Bottom&Right, Horizontal Door Close, Horizontal Interlace Cross, Vertical Interlace Cross, Fade out & Fade in, Horizontal Blind, Window Path, 16x16 Mosaic.) Confirm by [▶II/▶], and exit by [⏏] on remote control or [MENU] on device.
- ④ **Slide Times:** There are four options of Slow, Middle, Fast and Customized. Enter Customized setting by [▶II], navigate [◀/▶] for time setting, and exit by [⏏] on remote control or [MENU] on device.
- ⑤ **Photo & Music:** Setting music in default folder as the background music during slideshow. Copy the music files to Default sub-directory of Music folder, when choose Default, it plays music in the Default sub-directory. If choose Customized, the system will turn to Music Browser menu by pressing [▶II]. Navigate [◀/▶] to enter any sub-directory, confirm by [▶II], and exit by [⏏] on remote control or [MENU] on device.



- ⑥ **Order:** “Name” means display pictures by the file name sequence. Such as under the Photo directory, there are 5 pictures and namely 1.1.jpeg, 1.11.jpeg, 1.111.jpeg, 1.1111.jpeg, 1.11111.jpeg. And the display sequence of these 5 pictures would be from 1.1.jpeg to 1.1111.jpeg. “Time” means display pictures by the time of picture being stored into the memory card, it starts with earliest one to latest one.
- ⑦ **Picture:** There are 4 options of Brightness, Contrast, Color and Ratio for setting. Navigate [▲/▼] to select, enter by [▶II/▶], adjust the value by [◀/▶] and exit by [⏏] on remote control or [MENU] on rear panel. And there are 3 options of Center, Crop and Stretch in the Ratio setting. “Center” means display picture in its original size, “Crop” means full-screen display picture in its original size and cut out the unwanted part. “Stretch” means full-screen display picture by changing its original ratio & size.

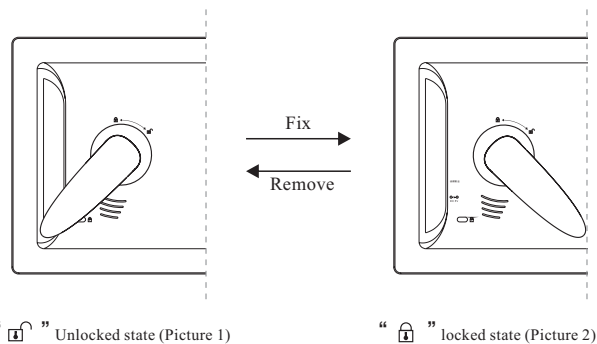
2.7 Remote Control Illustration



- ① **POWER:** Turn on/off the device.
- ② **MENU: BACK:** back to the up-level menu.
- ③ **PLAY:** a. Press briefly for switching play or pause state in the multi-media function.
b. Long pressing for pop up the setup menu.
c. Press briefly for entering or confirming the selected option.
- ④ **UP:** a. Upward select; b. Previous.
- ⑤ **DOWN:** a. Downward select; b. Next.
- ⑥ **LEFT:** a. Leftward select; b. Back; c. Volume-; d. Adjust-.
- ⑦ **RIGHT:** a. Rightward select; b. Confirm; c. Volume+; d. Adjust+.
- ⑧ **Slideshow -** Switch to photo slideshow directly.
- ⑨ **One click network setting:** Fast access to network setup menu.

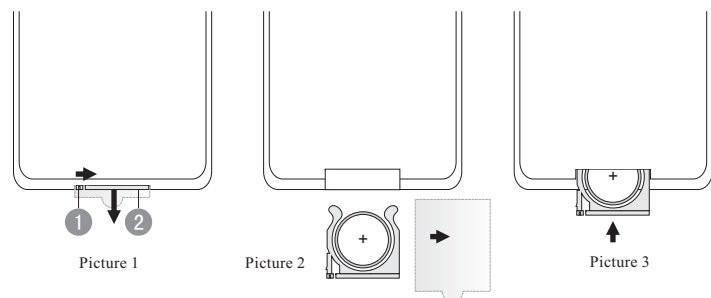
3. Getting Started

3.1 Stand



Align the [] projection of stand to the holes on the rear panel and push it (Picture 1), then rotate the stand counterclockwise to the position as shown in Picture 2. To remove the stand, rotate it clockwise.

3.2 Battery Installation



- (1) Please refer to the Picture 1, take out the battery, battery case and plastic insulator follow the arrow.
- (2) Remove the plastic insulator. (Picture 2)
- (3) Insert the battery & battery case into the remote control. (Picture 3)

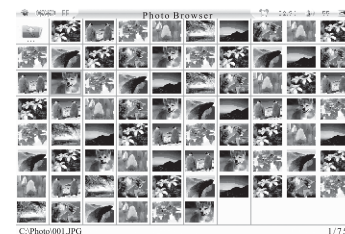
File: There are three options of delete, copy and copy to.

Copy: File is copied to the Music directory by the default path.

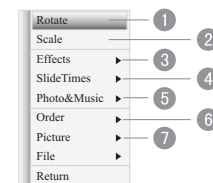
Copy to: File is copied to the specified destination path. Press [▶] to enter sub-directory, [◀] to back to up-level directory, and [▶▶] to copy file.

Photo

- In My Favorite menu, select Photo and press [▶▶] to enter photo browser OSD, the photos will be shown in thumbnail. (Copy all photos to Photo Directory is recommended). Press [▶▶] to slideshow a selected picture in full-screen, and exit by [] on remote control or [] on device. During exit processing, you can view the file directory in each path and switch medium.



- During picture slideshow, long press [▶▶] for setup menu, navigate [▲/▼] to select options, confirm by [▶▶], and exit by [] on remote control or [] on device.



- ① **Rotate:** picture rotation (0-270 degree clockwise rotates). Press [▶▶] for switching rotation angle, and [] on remote control or [] on device to complete rotation, and exit.
- ② **Scale:** Picture zooms in (1-5 times). Press [▶▶] to zoom the picture, and [] on remote control or [] on device to complete zooming, and exit.

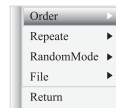
4.5 My Favorite

Music

- In My Favorite menu, select Music and press [▶||] to enter music browser OSD, the play list will be shown in tree-structure. (Copy all music files to Music Directory is recommended). Press [▶||] to play the selected music. Navigate [▲/▼] for previous or next song, adjust the volume by [◀/▶], and pause by [▶||].



- During the playing, long press [▶||] for setup menu, navigate [▲/▼] to select options, confirm by [▶||], and exit by [MENU] on device or [⏏] on remote control. During exit processing, you can view the file directory in each path and switch medium.



- **Play sequence:** “Name” means display files by the file name sequence. Such as under the Music directory, there are 5 music files and namely A1.mp3, A11.mp3, A111.mp3, A1111.mp3. And the play sequence of these 5 music files would be from A1.mp3 to A1111.mp3. “Time” means display files by the time of being stored into the memory card. It starts with earliest one to latest one.

3.3 Connecting Illustration



★Note: Audio Output port should be connected active speaker only.

FCC WARNING

This device complies with Part 15 of the FCC Rules. Operation is subject to the following two conditions:

- (1) this device may not cause harmful interference, and
- (2) this device must accept any interference received, including interference that may cause undesired operation.

NOTE: This equipment has been tested and found to comply with the limits for a Class B digital device, pursuant to part 15 of the FCC Rules. These limits are designed to provide reasonable protection against harmful interference in a residential installation. This equipment generates, uses and can radiate radio frequency energy and, if not installed and used in accordance with the instructions, may cause harmful interference to radio communications. However, there is no guarantee that interference will not occur in a particular installation. If this equipment does cause harmful interference to radio or television reception, which can be determined by turning the equipment off and on, the user is encouraged to try to correct the interference by one or more of the following measures:

- Reorient or relocate the receiving antenna.
- Increase the separation between the equipment and receiver.
- Connect the equipment into an outlet on a circuit different from that to which the receiver is connected.
- Consult the dealer or an experienced radio/TV technician for help.

NOTE: The manufacturer is not responsible for and radio or TV interference caused by unauthorized modifications to this equipment. Such modifications could void the user's authority to operate the equipment.