



JENSEN  
User's Manual



*Thank you for buying our product*

## Patent

The contents of this manual belong to Audiovox Electronics

- This manual covers set up and operation for the Uren Mobile AutoPC tablet.
- This manual's contents have been written with the utmost care so you the customer can easily learn how to use the Mobile Auto PC. However, upgrades can be done without prior notification. Please check our website if you have any problems.
- This manual and all contents cannot in any way, shape, or form, be electronically, or mechanically copied by copyright laws.
- Audiovox is not responsible for nor be held legally liable for any data loss.
- We recommend that all important data be regularly backed up on another device for your own protection.
- All trademarks are used for information only. They are also protected under patents laws of their respective companies.
- VIA EDEN is a VIA Corporation trademark.
- All Microsoft products listed in this manual is protected by Microsoft Corporation trademarks.
- Apple Quicktime, iTunes, and AAC are trademarks of Apple Computer.
- SIRF Star III is a trademark of SIRF Corporation.

All other trademarks are protected under their respective corporation.

## **1** Beware

### 1.1 Care during installation

- Installation should be done on a flat surface. Don't install while holding it in your hands. Furthermore, installation in a car should be done while the AutoPC is in its cradle.
- Audiovox cannot be held liable for any damage incurred by dropping the device.
- We recommend you use only the authorized Audiovox adapter as your power supply.
- Please use power supply with overcharge resistant power bar.
- Before using any power supply for the first time, make sure it is the appropriate power supply or contact your local representative for confirmation or check our website for further details.
- Please operate the AutoPC safely including but not limited to protecting the power supply from water or any material on the AutoPC.
- Please confirm with your dealer before using it the first time before connecting the AutoPC to your car on whether it is compatible.
- Some vehicles like trucks sometimes use a higher voltage. Audiovox is not responsible for any damage incurred in this regard.
- Check your state and local traffic laws before mounting. Currently, state laws in California and Minnesota prohibit drivers from using suction mounts on their windshields while operating motor vehicles.

### 1.2 Care during installation

- Keep away from humidity.
- Don't cover the ventilation system of the AutoPC.
- Please follow all instructions regarding the safe use and operation of the AutoPC.

- Please keep all liquids away from the AutoPC to prevent shock or damage.
- Do not try to repair the AutoPC under any circumstances. Call the nearest authorized dealer for service. Warrantee is void if the customer tries to service the AutoPC by himself.

### 1.2.1 Customer Service

- If the AutoPC in any way does not operate according to specification, send it back to us service.
- If you drop it or damage the AutoPC send it to us for service.
- If the screen isn't acting within established parameters, sent it to us for an expert evaluation of the problem.

### 1.3 Always keep it in a safe place

- Do not store it near a heat source.
- If you aren't using the AutoPC, please disconnect the power supply to prevent overcharge.

### 1.4 Proper Maintenance

- Before cleaning, please disconnect all power sources from the AutoPC.
- During cleaning, please use LCD cleaning products only or use a warm DAMP cloth.
- NEVER use alcohol, solvent, or any other chemical agent on the AutoPC while cleaning.
- Do not spray directly onto the screen.
- Do not use any paper whatsoever since it can damage the screen.

### 1.5 Storage Instructions

- The hard disk drive (HDD) is a fragile piece of equipment. Be careful when handling and keep away from all magnetic devices or sources.
- Please back up data regularly.
- Don't shake the AutoPC since data can be lost due to the fragility of the HDD.
- Do fragmentation of the HDD regularly to optimize performance.
- Be careful when handling the MiniSD card especially watching out for static electricity.
- Manufacturer and or dealers are not responsible for any data loss under any circumstances.

### 1.6 Careful Use While Traveling

- Always back up files before traveling.
- Always check power supply before use for suitability with the AutoPC.
- Please use carry case for maximum protection against loss of data.

## 2 Complete System List

1 Main System



2 Stylish Pen



3 Pouch



4 AC Adapter



5 Vehicle Cigar Adapter



6 Remote Control



7 Output Cable from System to TV.



8 Cradle



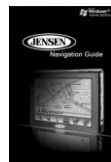
9 Vehicle Attachment



10 User Manual



11 Navigation Manual



## Index

- 1. Beware .....3
  - 1.1 Care during installation .....3
  - 1.2 Care during installation .....3
    - 1.2.1 Customer Service .....4
  - 1.3 Always keep it in a safe place ...4
  - 1.4 Proper Maintenance .....4
  - 1.5 Storage Instructions .....5
  - 1.6 Careful Use While Traveling ...5
- 2. Complete System List .....6
- 3. System Introduction .....8
  - 3.1 Special Features .....8
  - 3.2 Specifications .....9
  - 3.3 Name and function of each Part ...10
- 4. How to use the Auto PC .....17
  - 4.1 System start up .....17
  - 4.2 JENSEN Space .....19
  - 4.3 How to Use Navigation System ...23
  - 4.4 How to use the Internet .....24
  - 4.5 How to Use Video Player ...24
  - 4.6 Video Player Main System ...27
  - 4.7 Using Audio Player .....29
  - 4.8 Configuration .....31
  - 4.9 Using Windows XP .....36
  - 4.10 Setting Touch screen .....37
  - 4.11 Game .....41
  - 4.12 User Set Program .....42
  - 4.13 Power .....42
- 5. Using the Remote Control ...42
- 6. SETTING UP WIRELESS .....45
  - 6.1 Connecting your Auto PC to the wireless LAN. ....45
- 7. Bluetooth Instruction .....57
  - 7.1 What is Bluetooth™, wireless technology .....58
  - 7.2 What you need to know about using Bluetooth™, wireless technolog .....59
  - 7.3 Varieties of Bluetooth™ wireless technology devices you can use .....62
  - 7.4 Contents of the Bluetooth™ Utility.....66
  - 7.5 Using the Bluetooth™ Utility ...69
  - 7.6 Flow of operation.....70
  - 7.7 Basic settings .....71
  - 7.8 Express Mode Set-up.....72
  - 7.9 Custom Mode Set-up.....78
- 8. System Setup.....87
  - 8.1 Bios Setup .....87
  - 8.2 Entering BIOS Setup .....87
  - 8.3 Setting Time and Date .....88
  - 8.4 Set Advanced .....88
  - 8.5 Set Boot .....89
  - 8.6 Set Security .....89
  - 8.7 Set Chipset .....90
  - 8.8 Save settings .....91

## 3 System Introduction

### 3.1 Special Features

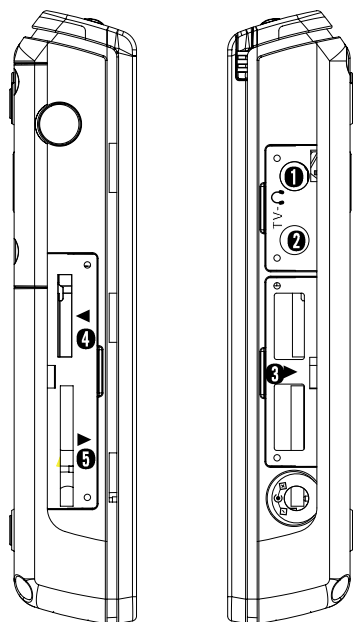
- ❶ Mobile Auto PC : The Auto PC is a complete navigation and tablet PC with many interesting features.
- ❷ It has a 7" wide TFT LCD touch screen :  
It supports from 800 X 480 pixel resolution up to 1024 X 768 pixel resolution.
- ❸ Industry leading multi-media capabilities : Auto PC can play all leading multi-media file formats including MPEG4, WMA/DivX, MP3/WMA/AAC.
- ❹ GPS navigation : Uren includes the SIRF CPS with internal antenna with a 1GB memory for premium.
- ❺ Convenient audio system connection : Auto PC has FMT
- ❻ Network capability : Auto PC supports 10/100 Mbps Lan IEEE803.11b/g.
- ❼ Design : Auto PC has a slim and elegant design.
- ❽ Multi-tasking : You can listen to music or watch a movie or video while using the GPS system.

### 3.2 Specification

Major Component		Description	Remarks
		Mobile Auto PC	
Processor	CPU	VIA Eden V4 Processor (NanoBGA2)	
	CPU Frequency	1GHz	
	L2 Cache	128 Kbytes	
Memory	DRAM Size	256 Mbytes	
	DRAM Type	DDR2 533	
Display	Display Unit	7 inch WVGA TFT LCD (800x480), support Auto scaling (800 x 600, 1024 x 768)	
	Graphics Controller	Integrated UniChrome Pro II gfx in CX700M	Samsung LED
	Video RAM	Shared Memory upto128 MBytes	
Audio	Codec	High Definition Audio Codec ALC262	
	Speaker	Mono out speaker	
	Ports	Headphone out, Internal Microphone	
FM Transmitter		87.5 MHz ~ 108 MHz	
Touch		Touch screen Controller with Stylus pen	
IR		Infrared Remocon	
HDD		30 GB (1.8" HDD)	
Bluetooth		Bluetooth v2.0 + EDR Class II	
WLAN		IEEE 802.11b / g	
Navigation	GPS	SirF III with Internal Antenna	
Button	Power Button	System Power On/Off, LED for power/charge display	
	Mode Button	Windows / NAVI / DMB / Video Player/Audio Player / FM Transmitter mode	
Battery (internal)	Type	Li-ion Battery	
	Capacity	2S1P, 7.4V / 2000mAh (max. 2000mAh)	
	Running Time	2 Hours	
Operating System		Windows XP Home Edition SP2	
Dimension (W x D x H)	System Unit	192 x 120.5 x 25 mm	
Weights	System Unit	695 gram	
AC/DC Adapter		12V, 4A	
Vehicles Cigar Charger		(9~14V, 2A)	

### 3.3 Names and Functions of Each Part

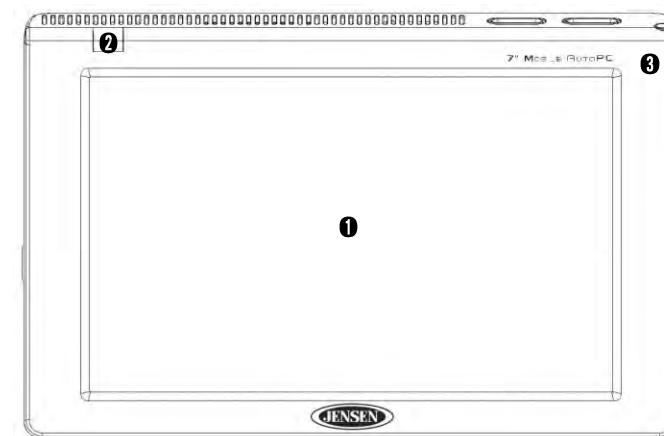
#### Names and Functions of Each Part



- ❶ Headphone port
- ❷ TV port
- ❸ USB 2.0 port
- ❹ External I/O port
- ❺ Mini SD card slot\*

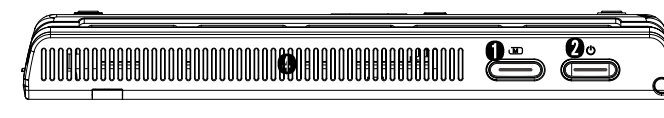
\* Some model do not have these ports.

#### Front Face



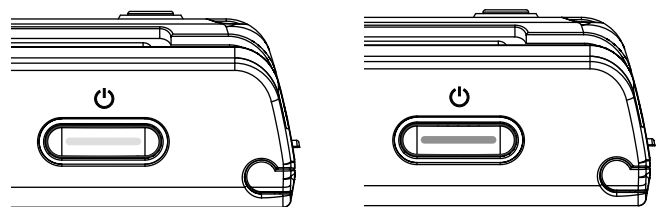
- ❶ LCD Color Display : Touch screen technology makes the Auto PC a joy to use.  
-Resolution default is 800\*480 while maximum is 1024\*768 pixels.
- ❷ Remote Control Receiver
- ❸ Internal Microphone : Voice recording is possible for remembering ideas, singing songs, taking a memo etc.

#### Top of the Auto PC



- ❶ Button/HDD indicator : This button can call up the Auto PC menu at any time. The orange flashing indicates that the HDD work is in progress.

2 Star Button : Press the button to turn on the Auto PC.

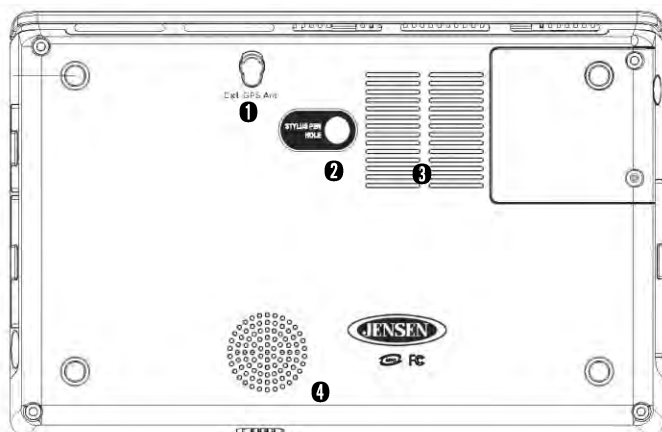


Green Button : System is in use

Red : Battery is charging

- 3 Stylus Pen Hole : Touch screen pen is inserted here for easy access at any time.
- 4 Ventilation Duct : To keep the Auto PC cool, ventilation is on top. There is another in the back of the Auto PC.

Back face

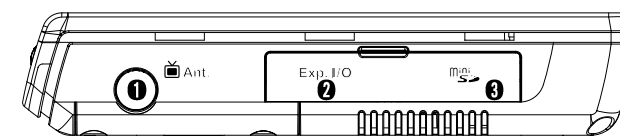


\* This image is for the V1 model

- 1 GPS Antenna Port : As an option, an external GPS port is given to provide better reception.

- 2 Stylus Pen Hole
- 3 Air Intake Hole for Ventilation
- 4 Internal Speaker : Mono Speaker has a 1.5W output

Left side



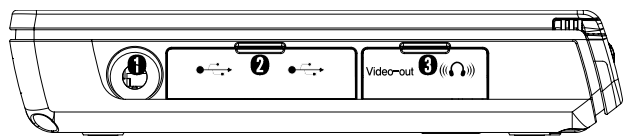
- 1 Expanded I/O Pack Port : Extra port is provided to allow users access to Internet, to connect to CRT monitor and to provide two extra USB 2.0 ports
- 2 Mini SD card slot : With mini SD slot, you can transfer information to many different devices including PDAs, Digital Cameras, Mobile phones

Mini SD Card Information



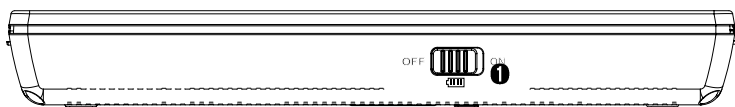
- Mini SD card must be formatted
- The Auto PC can accept any electronic device mini SD format. However, the Auto PC mini SD format capability is not necessarily acceptable in all electronic devices
- Some models cannot support this feature

### Right side



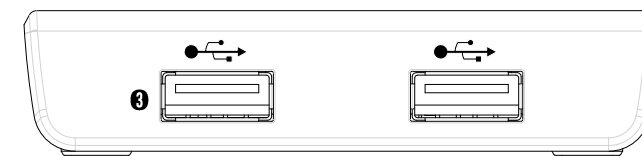
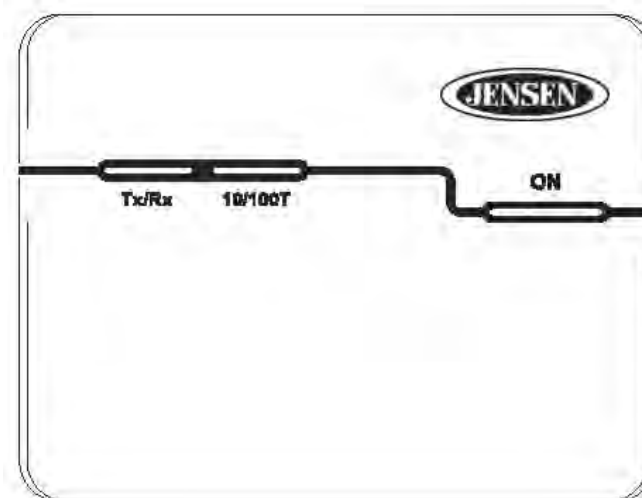
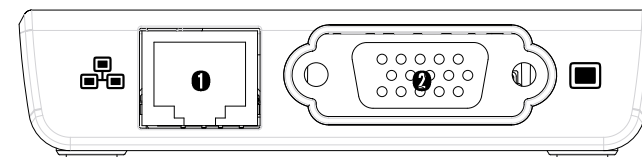
- ❶ Auto PC Electrical Socket : The Auto PC can use power from two sources which has been provided for your convenience: A regular AC adapter and a car cigar jack adapter. Innowell recommends use of original adapters and only replacements provided by Audiovox. Audiovox voids guarantee if another source is used.
- ❷ USB Ports : Two USB 2.0 ports have been provided for maximum flexibility. All electronic devices (digital cameras, printers, scanners etc) can be used.
- ❸ Audio/TV port : Audio port can connect to either headphones or speakers. The TV port on the Auto PC can connect to the TV input port so you can watch downloaded movies from the Auto PC or a TV.

### Bottom



- ❶ Battery on/off Switch : To save the internal battery's long life, please switch the battery to off when not in use for a long time.

### Expanded I/O Port

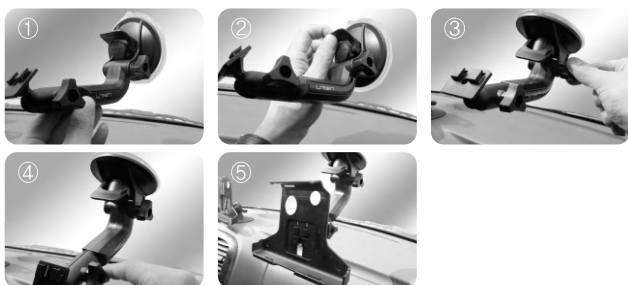




- ❶ Lan Port : The Auto PC can connect to either a network or the Internet. Lan card speed is 10/100 Mbps.
- ❷ External Monitor Expanded Port : You can connect to an external monitor for better resolution. You can use LCD and external monitor at the same time. You can also connect to monitor, projector, or TV to do multi-media, make presentations or watch a movie respectively.
- ❸ Additional USB Port : Two extra USB 2.0 ports are supplied for ease of use.

## ○ Accessories

- ❶ AC Adapter : You can use this AC adapter worldwide due to its voltage parameter. Extra adapter plugs for other electrical formats are not included.
- ❷ Car Cigar Jack : Innowell has provided a car jack adapter for more convenience.
- ❸ How to mount unit with suction cup
  - \* Before mounting unit on a windshield, clean the adhesive face pad with dry cloth

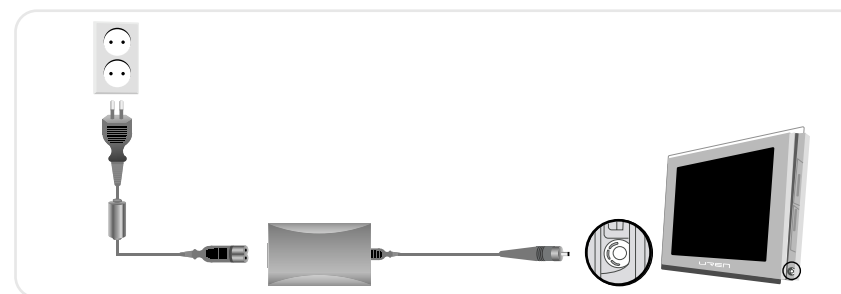
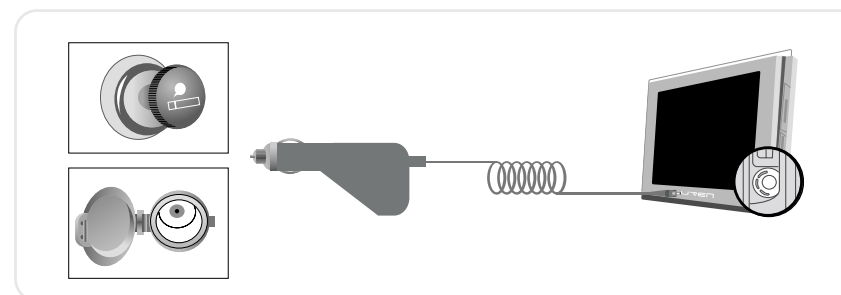


- ❶ Position mounting kit on a windshield
- ❷ Push vacuum lever to adhere to windshield
- ❸ Control angle of Arm and fix tightly by adjustable joint
- ❹ Control bracket angle and fix tightly by adjustable joint
- ❺ Connect cradle into bracket and confirm the display angle to your view

## 4 How to use the Auto PC

### 4.1 System Start Up

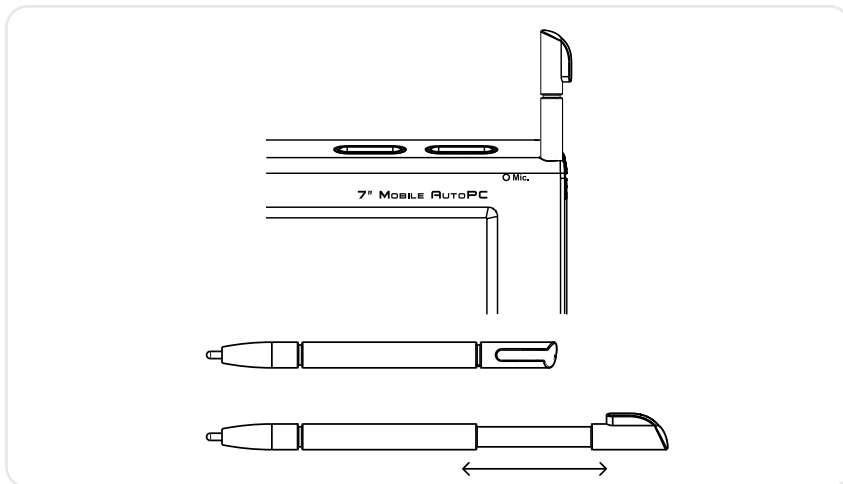
#### ■ Connect Power Supply



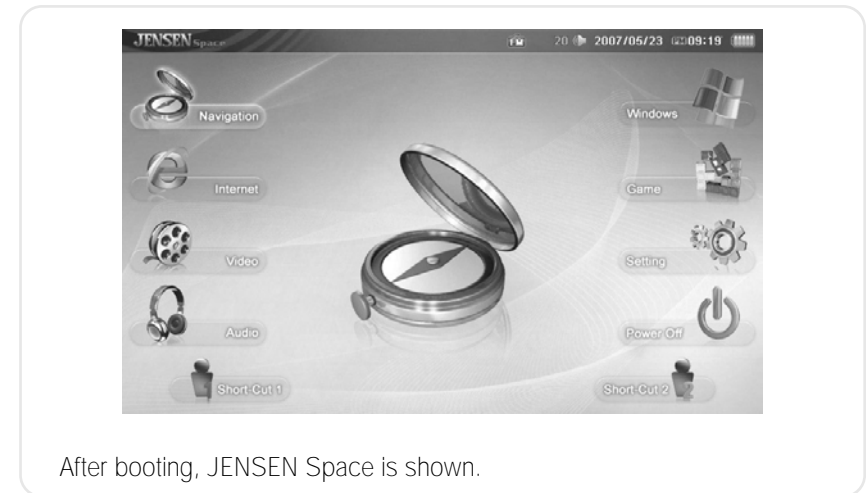
- ❶ Connect AC adapter or car cigar jack adapter to Auto PC.
- ❷ The AC adapter or car cigar jack adapter can be plugged into the lower right side power socket.
  - Please use the authorized Power Supply when using the Auto PC.
  - Please confirm that international sockets have the proper ampere.

## ■ Stylus Pen

Stylus Pen replaces the mouse function. Holding the pen down on the touch screen for three seconds is equivalent to the right click of a mouse. Please return the stylus pen in its slot to prevent loss.



## 4.2 JENSEN Space



After booting, JENSEN Space is shown.

## ■ JENSEN taskbar Items



- 1 **JENSEN** JENSEN Logo : By clicking on the JENSEN logo in the top left hand corner of the screen, all programs will stop running.
- 2 **FM** FM Icon : The FM icon is off when it is gray.
- 3 **Volume** Volume Icon : It indicates the level of volume that is being used.
- 4 **2006/04/27 02:37** Date/Time Icon : Shows date and time.
- 5 **Battery** Battery Icon : Shows the amount of power in battery.

### ■ Navigation

User-friendly GPS system for easy driving.



### ■ Internet

Press the icon to start internet explorer



### ■ Video Player

You can play movie files.



### ■ MP3 Player

This MP3 Player can play MP3 and WMA audio files.



### ■ Windows

You can go to Windows Original screen to execute Windows application programs.



### ■ Game

You can enjoy many different games.



■ Setting

You can find out about FM Transmitter, date/time, LCD brightness, volume, user setting preference and version information.



■ Power Off

You can shut down the system by pressing this button.



■ Short-cut

Users can program the remote control for favorite applications



4.3 How to Use the Navigation System



A separate book has been supplied that explains how the navigation system works.



## 4.4 How to use the Internet



Press the icon to start internet explorer

### ■ Execution

You can double-click the internet icon or click the left side internet icon then click the center icon to start internet explorer

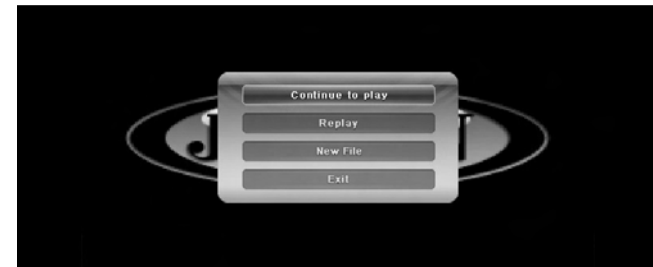
## 4.5 How to use Video Player

### ■ How to operate



Double-click the video player icon or click the left side icon then click the center icon to start the video player.

### ■ Play file



- 1 Click on the menu to choose the file you want from the pop-up.
  - You can start the movie from the moment you last stopped it.
  - To watch movie from beginning: You can reset the movie to the beginning.
  - To watch new movie file: Click on the appropriate file.
  - Stop movie: Click or stop.
- 2 If you want to view a movie, a second window will appear to allow you a chance to decide which movie you want to see.



You can select the appropriate movie from the complete list of movies from the video file manager. The video file manager only shows executable files.

## ■ File Manager Menu Description



- 1 You can search from Windows Original screen.
- 2 You can go into my computer or driver from the Search Window.
- 3 You can go into my documents and sub-files.
- 4 You can add selected files to the play list.
- 5 You can erase selected items.
- 6 You can edict all items of the play list in the Search Window.
- 7 You can erase all items in the play list.
- 8 You can play only checked items.
- 9 You can play all items in the play list.
- 10 You can save all items in your play list.
- 11 You can skip any item on your play list so it isn't saved.
- 12 You can control the order of the items in your play list upwardly.
- 13 You can only move an item in the play list one step up at a time.
- 14 You can only move an item in the play list one step down at a time.
- 15 You can control the order of the items in your play list downwardly.
- 16 You can completely check(or uncheck) all the items in your play list.

## 4.6 Video Player Main System



- 1 Start/Play/Pause
- 2 Stop
- 3 Ten second
- 4 Ten second
- 5 Volume control
- 6 You can set up a repeating sequence.
- 7 Go to video file manager
- 8 Open set up Window
- 9 Minimize button
- 10 Changeable View Screen size button
- 11 Maximize button
- 12 Quit

## ■ Video Player Setting Screen

### ① Basic Setting



1. Screen Size : Set the screen size to big/full size.
2. Shut down after play : Set if the system will automatically shut down after playing.
3. Brightness Setting : Set the XVID codec video.
4. Play : Set the play style to file, list, repeat.
5. Quick Play : Set whether to load the help screen when selecting quick play.

### ② Caption Settings



1. Color : Set the caption's color.
2. Size : Set the words' size.
3. Position : Set the caption's position.
4. Sync : Change if video does not match Audio.
5. Language : Set the caption's language.



You can not process Video, MP3 Player simultaneously.

## 4.7 Using Audio Player



Double-click the icon as shown above and click the image in the center to process.

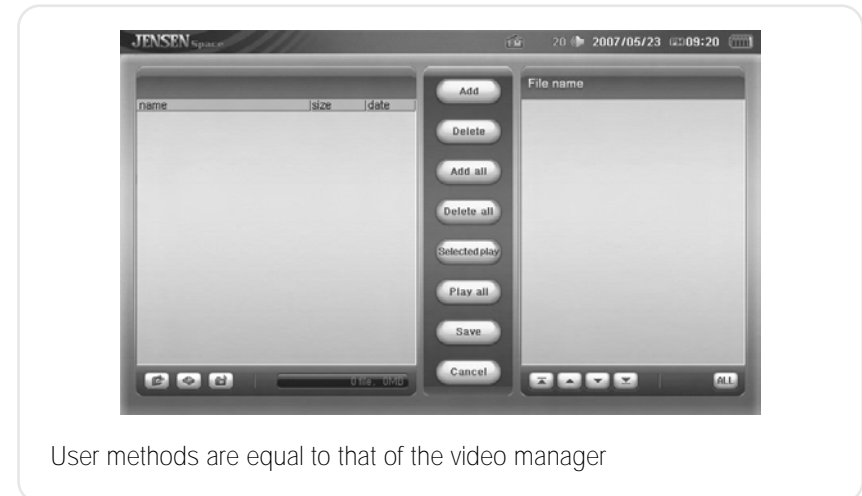
■ Audio Player Main Screen



- 1 Title bar
- 2 Play
- 3 Stop
- 4 To front
- 5 To next song
- 6 Volume Control
- 7 Set repeat
- 8 Set play mode
- 9 Set Shuffle mode
- 10 Enter Audio File Manager
- 11 Move the selected file to front of list
- 12 Move the selected file up one step
- 13 Move the selected file down one step
- 14 Move the selected file to last of list
- 15 Save play list
- 16 Delete songs (Saved files cannot be deleted)

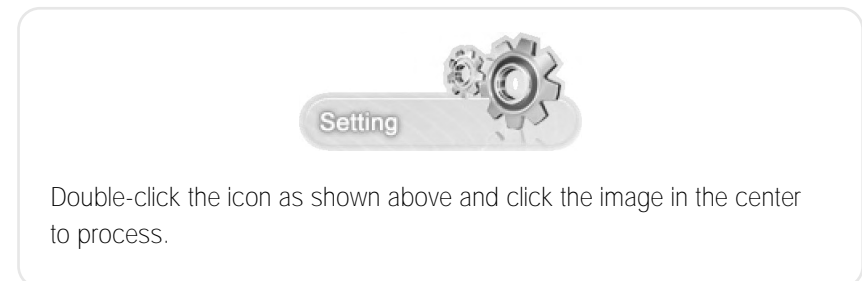
- 17 Minimize button (Hide Player)
- 18 Player size (Change Player size)
- 19 Quit button

■ Audio File Manager



User methods are equal to that of the video manager

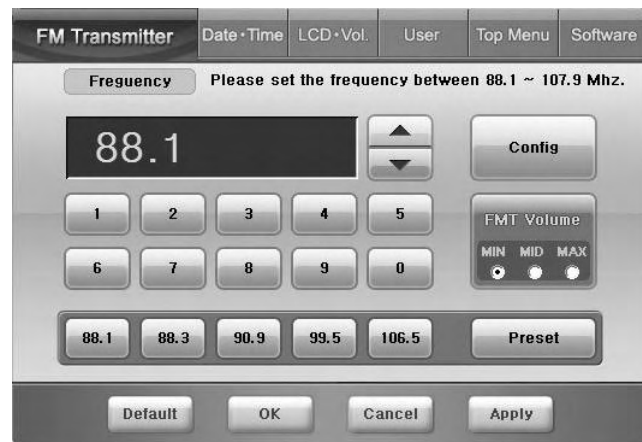
4.8 Configuration





### ■ How to set the FMT

1. From the Jensen Space, please choose the "Setting"
2. From the "Setting" menu, choose "FM Transmitter" tap as shown below.



※ Note: Please notice that no sound plays while in FMT mode from the unit.

3. Choose the designated frequency by arrow up & down buttons or clicking the numbers.

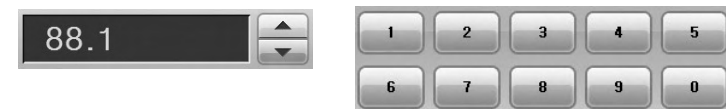


4. After choosing the frequency, please click "Config" button to activate the FMT. When the FMT mode is enabled, the button color is in light orange color. To disable the FMT click the "Config" button again.



### ■ How to set the Preset

1. Choose the designated frequency first by using the arrows keys or numeric buttons



2. Then, please click the "Preset" button



3. Lastly, please choose the one of empty preset spaces where the selected frequency will be stored.



4. After preset all five different frequency, please click "Apply" button to save the configuration.

■ Set Date/Time



Select each item and use the up/down arrows to set the time and date.

■ Set LCD Brightness/Volume



Set LCD brightness and Standby time to save battery. You can also set volume

■ User Setting



Select programs to assign to user1/2 buttons.

Set process - One click : Process JENSEN Space programs with one click.

Double click : Process JENSEN Space programs with two clicks.

■ Top Menu Setting



Users enables to choose their favorable application for Navigation Map software, Internet Browser, Video player, Audio player, and Game. For changing the application, simply search the favorable application designated folder by windows browser, and choose execution file. After making a modification, please save it by clicking "Apply" button.

## ■ S/W Version



You can check S/W version.  
You can update Firmware through the Internet.



The Auto PC does not offer an anti-virus program. Please install an anti-virus program before connecting to the Internet. Refer to the individual user manuals of the anti-virus programs for installation. You may need external ODDs. To return to JENSEN Space, double click the JENSEN icon.

## 4.9 Using Windows XP



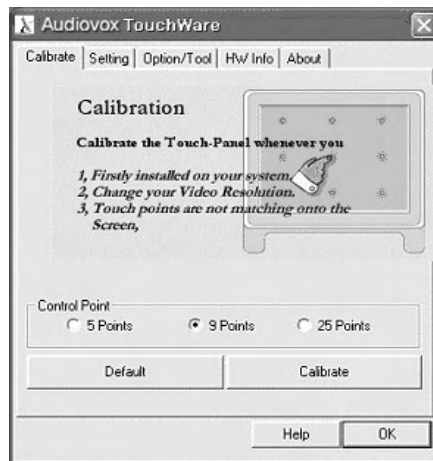
If you click on the icon as shown above, the desktop screen appears. You can use typical windows programs on the desktop and set the Auto PC touch screen sensitivity.

## 4.10 Setting Touch screen

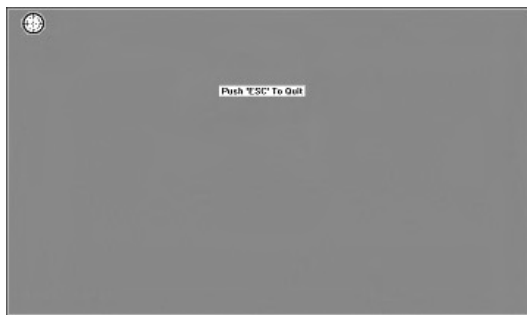


You can configure the touch screen settings by double clicking the Touchware icon as shown above.

## ■ Calibrate



Decide how many dots (5, 9, 25) you will use to control and press the Calibrate button to open the configuration window.



Press the center of the target for 2 seconds to adjust. You will need to press the same number of dots you selected.

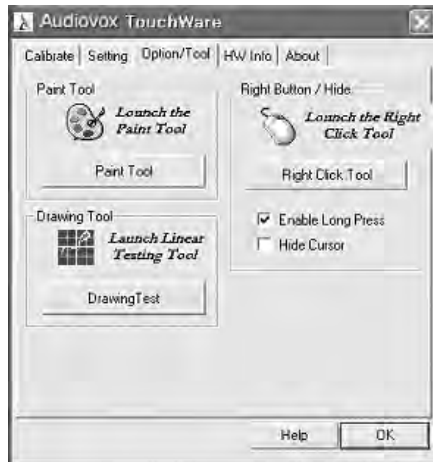
\* If, in the first boot the touch point does not work correctly, exit to the window mode and configure calibrate in the Touchware program.

## ■ Setting



- **Touch Action** : Decide the function's method.
  - Normal Touch
  - Kiosk Emulation
  - Click on Release
- **Double Click** : Control the double click speed. You can test the setting after configuring it with the slide bar.
- **Sound Tone** : Control the touch screen sound. You can configure the tone with the slide bar and the system will be set to mute when you uncheck the beep on the box.

■ Option/Tool



- Paint Tool : Open the Windows WP's Drawing board.
- Drawing Tool :
- Right Button/Hide : Process program that helps the action of the mouse's right button.



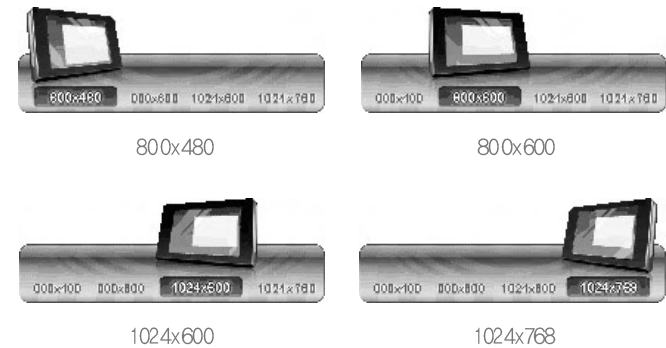
Pressing the touch screen will bring the same effect of click the left button of the mouse.



Pressing the touch screen will bring the same effect of click the right button of the mouse.

■ Auto Scaling Function

You can change the screen resolution by pressing the Auto button on the remote control.



Resolution changes for every press.

- \* Because JENSEN Space and Navigation function in the full screen mode, Auto scaling function does not work.
- \* If you enter JENSEN Space during a changed resolution, the resolution will automatically change to 800\*480, and will return to user resolution when JENSEN Space is closed.

4.11 Game

You can play Windows Spider game.

### 4.12 User Set Program

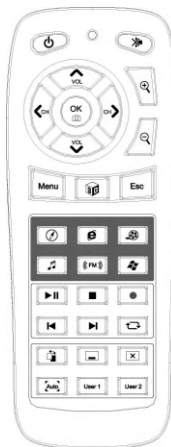
You can open programs you linked in User settings by clicking on the User1,2 buttons



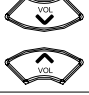
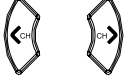





















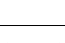
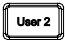

### 4.13 Power

If you press the power button of the main screen, a pop-up asking if you would shut down the system will appear. If you select "yes," the system will shut down.

## 5 Using the Remote Control



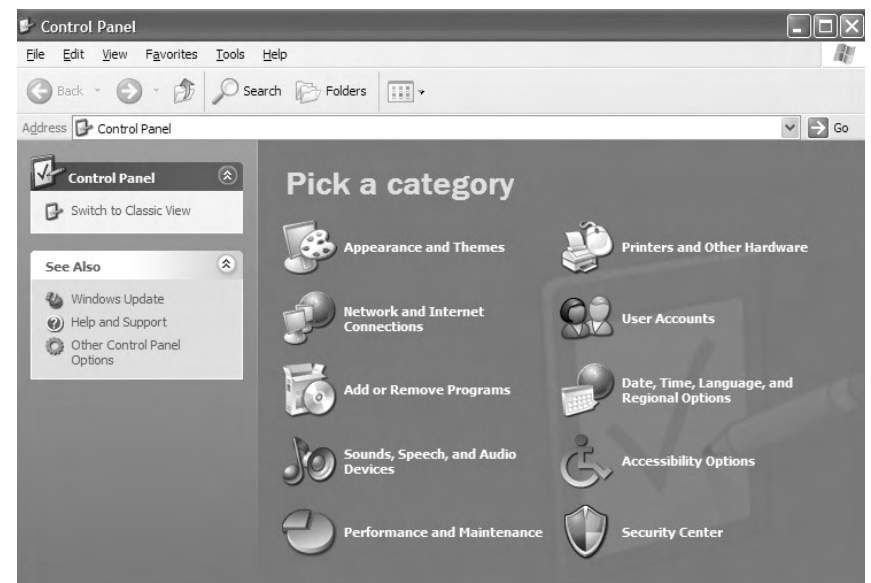
	Power button: Boot, shut down system.
	Mute button: Mute the system.
	Volume/up, down button: Control volume, Move the cursor up/down.
	Not used.
	Magnify, Minimize button: Magnify/Minimize screen when in Navigation mode.
	Select/Safe Register button: Select button when processing programs.
	Menu button: Change to main screen.
	2D/3D button: Change map to 2D/3D.
	Esc button: Move to previous step.
	Navigation button: Process Navigation.
	Internet Explorer button : Surfing the web
	Video Player button: Watch videos on Video Player.
	Audio Player button: Listen to music on Audio Player.
	FM Transmitter button: Listen to the radio with FM Transmitter.
	Windows button: Load Windows XP.
	Play/Pause button: Play or pause when using Audio/Video Player.

	Stop button: Stop when using Audio/Video Player.
	Not used.
	Previous/Next button: Move to previous or next song when listening to songs. When viewing video, use it to move back or forward 10 seconds.
	Repeat button: Use to repeat select phrases.
	Change screen button: Change screens when using multiple programs.
	Minimize button: Minimize the current program.
	Quit button: Quit the current program.
	Auto button: Change resolution (800*480, 800*600, 1024*600, 1024*768).
 	User 1,2: Process programs you selected in the Settings

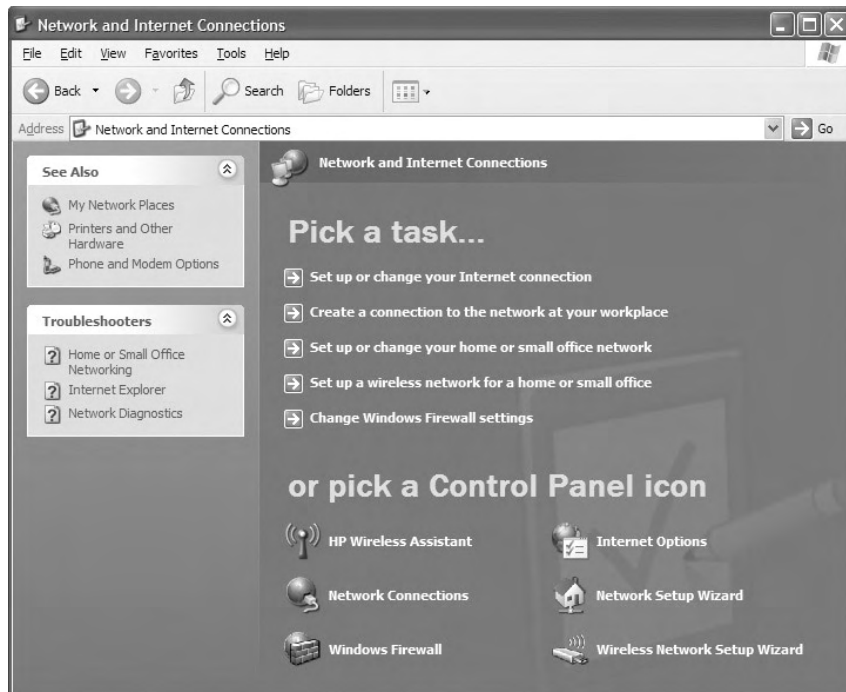
## 6 SETTING UP WIRELESS

### 6.1 Connecting your Auto PC to the wireless LAN.

1. From the Start Menu, select Control Panel and then select the Network and Internet Connections option

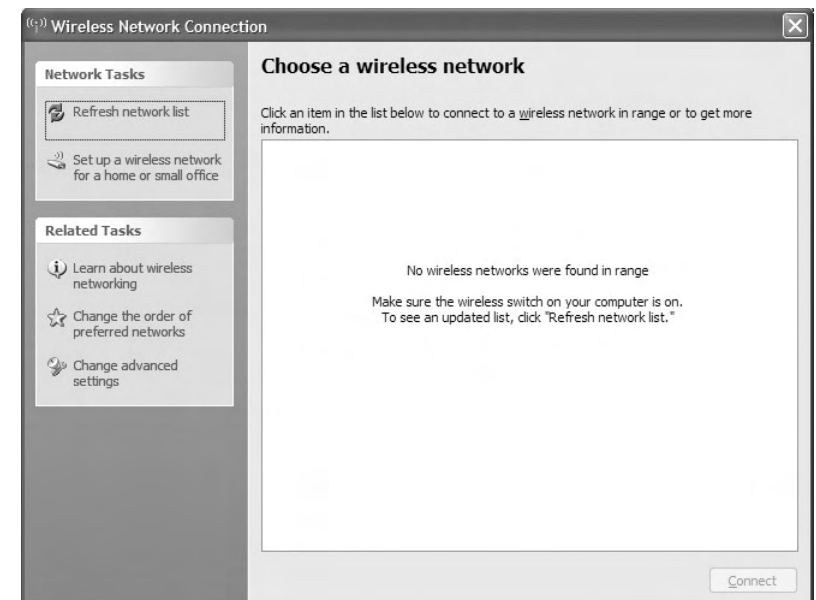


2. In the Network and Internet Connections window, select Network Connections



3. In the Network Connections window, if a Wireless Network Connection is listed, double click this to open the Wireless Network Connection window and proceed to step four. If no Wireless Connection is listed in the Wireless Network Connection window that appears, follow these steps to check your connection:

- i) In the Wireless Network Connection window, click the Change advanced settings link on the left





- ii) In the Wireless Network Connection Properties window, click on the Wireless Networks tab at the top of the window



- iii) In the Wireless Networks tab, tick the box next to Use Windows to configure my wireless network settings, and then click OK. Proceed to iv) Enabling Windows to manage your wireless connection, on page 10, below.

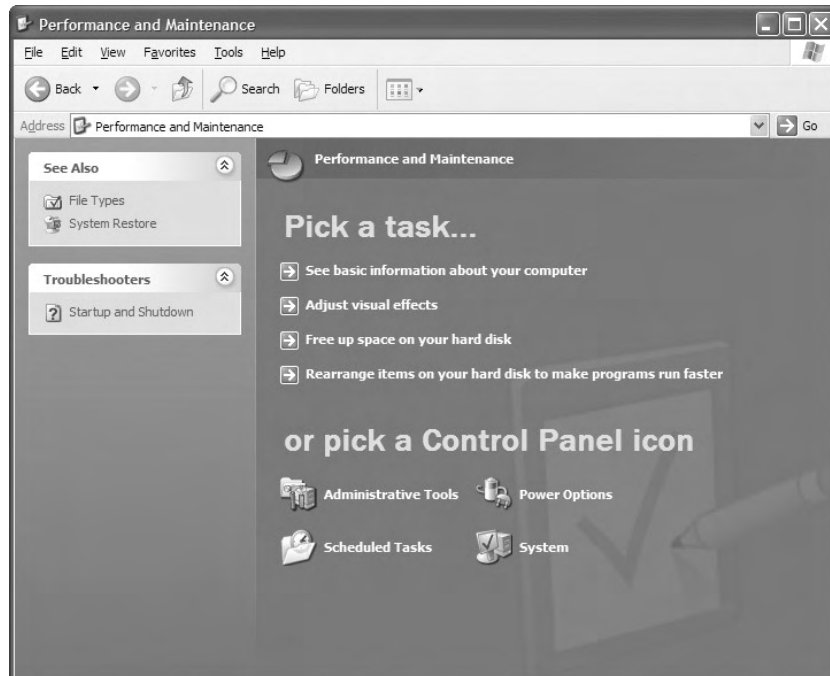


If the box is grayed out, and you are unable to tick it, follow the steps below to enable the Windows Wireless Zero configuration service:

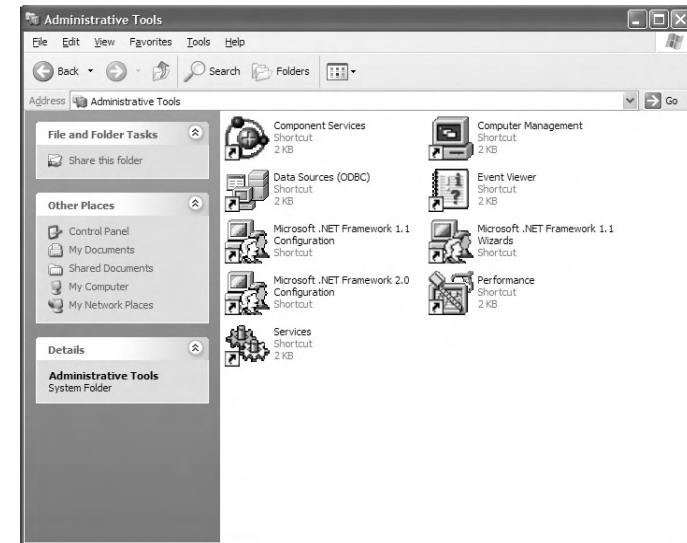
a) From your desktop, go to Start and select Control Panel

b) In the Control Panel window, select Performance And Maintenance

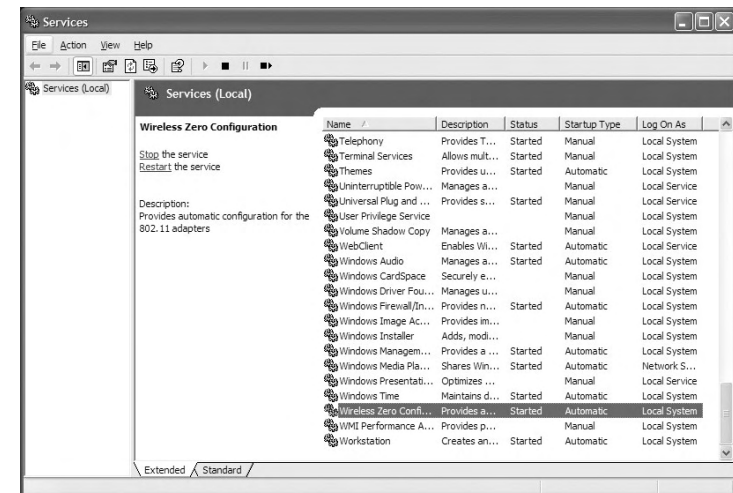
c) In the Performance and Maintenance window, select Administrative Tools



d) In the Administrative Tools window, double click on Services



e) In the Services window, scroll down until you see Wireless Zero Configuration and double click it

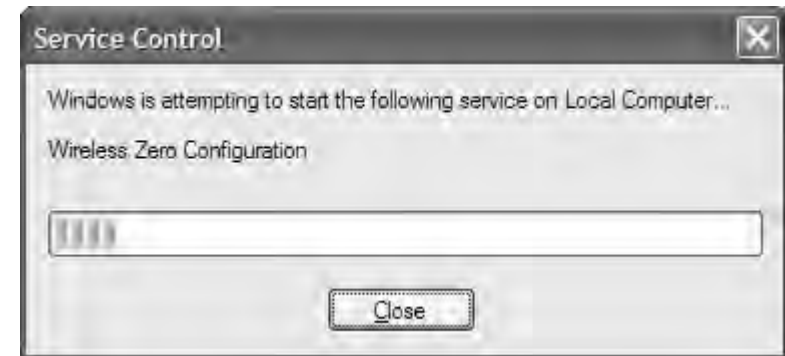


- f) If the Startup type is set to Disabled, click on the drop down menu and select Automatic, then click on Apply

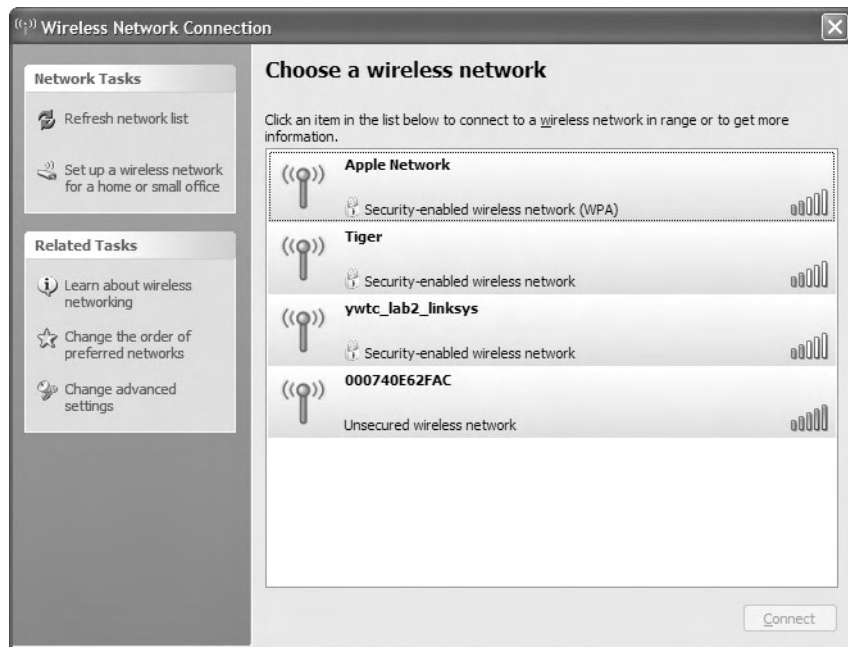


- g) In the same window, you should now be able to click on the Start button under Service status - do this now

- h) The following screen will pop up briefly as the service is starting



- i) Wait until the Service Control screen closes itself (do not select Close), then select OK in the Wireless Zero Configuration Properties window
- j) Now you can return to enabling Windows to manage your wireless connection
- iv) Enabling Windows to manage your wireless connection  
Open the Network Connections window again (Start, Control Panel, Network and Internet Connections, Network Connections)
- v) Double click the Wireless Network Connection icon in the Network Connections window again. This time, the window should display the list of the available wireless networks



4. The wireless network should appear in the list of available networks - you can find the name of your wireless network on the bottom

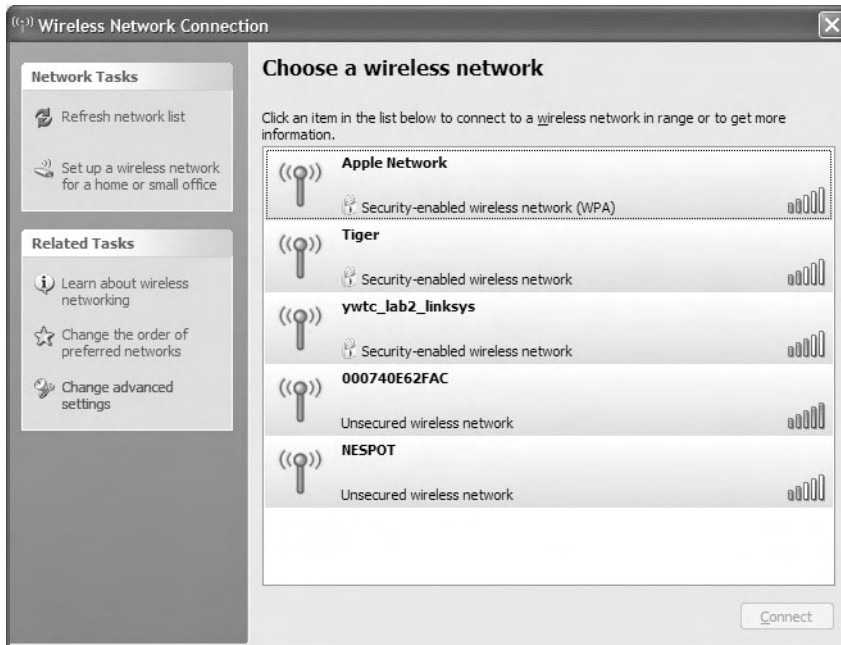
5. Double click the name of your wireless network to connect

6. As the connection is configured with WPA encryption, a window will appear asking for confirmation of the network key before the PC will be able to connect

7. The network key is required from the wireless access point's configuration and on the Wireless Network Settings. Enter this keys into the first box, and then repeat in the second box to confirm it. Finally, click Connect



8. Your PC should connect and the connection will show as "Connected" in the Wireless Network Connection Window



## 7 Bluetooth Instruction

Thank you very much for selecting the Bluetooth™ Utility.

This Help facility will show you how to use the Bluetooth™ Utility for configuring Bluetooth™ wireless technology devices and how it can be used in other convenient ways.

We hope that the Help facility will enable you to be able to make full use of the Bluetooth™ Utility.

- What is Bluetooth™ wireless technology?
- What you need to know about using Bluetooth™ wireless technology
- Varieties of Bluetooth™ wireless technology devices you can use
- Contents of the Bluetooth™ Utility

### ■ Important

This Help is oriented towards PCs that are compatible with Bluetooth™ wireless technology (whether onboard or via installed communications cards or adapters), as supported by the Bluetooth™ Utility. Some of the described functions may be impossible to use in your operating environment.

A part of descriptions for logo and icon and a part of paths to [Bluetooth] menu from [start] menu may be different from yours. These depend on your PC software and hardware environments for Bluetooth™ wireless technology.

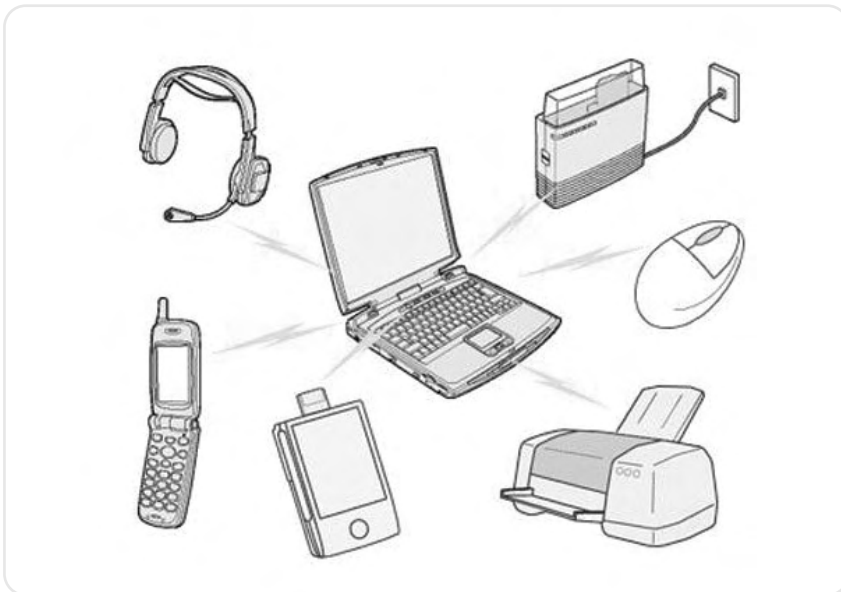
[Trademark information]

(C) 2003, 2005 TOSHIBA Corporation All Rights Reserved

## 7.1 What is Bluetooth™, wireless technology?

Bluetooth™, wireless technology is a global standard telecommunications format that enables data to be exchanged wirelessly between personal computers, peripheral components, mobile telephones, and other electronic devices.

Registering devices having onboard Bluetooth™, wireless technology to let them communicate with one another will make it possible for data to be readily exchanged between the devices.



A maximum of seven Bluetooth™, wireless technology devices may be connected together. By using Bluetooth™, wireless technology to connect to a mouse, keyboard, modem, printer, or other device, you can do away with messy cabling and avoid any concerns about space restrictions, which will allow you to work more comfortably.

## 7.2 What you need to know about using Bluetooth™, wireless technology

Bluetooth™, wireless technology exchanges data using radio waves.

The following points are critical in order for Bluetooth devices to be configured and used correctly.

- The devices must be Bluetooth™, wireless technology-compatible
- The devices must be close enough to be able to communicate
- The devices must be in a connectable state
- No other radio wave-emitting devices should be operated nearby
- The Bluetooth devices must be switched ON

### ■ The devices must be Bluetooth™, wireless technology-compatible

The hardware and software used in your PC and other devices must be Bluetooth™, wireless technology compatible.

Bluetooth™, wireless technology compatible products normally bear the following logo:



For further details, please refer to your local retailer or consult the product instruction manual.

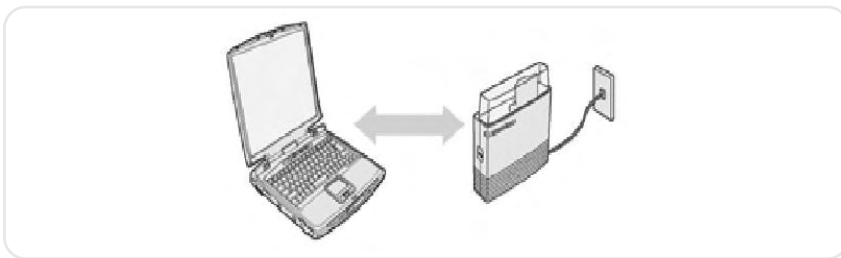


A Bluetooth™, wireless technology communication card, adapter, or other similar device (sold separately) needs to be installed in PCs or PDAs (personal digital assistants) that do not have onboard Bluetooth™, wireless technology.

■ **The Bluetooth™ wireless technology devices must be able to communicate with each other**

Devices situated in locations beyond the reach of the radio waves will not recognize each other, which will make communication impossible.

In particular, please ensure that your devices are located close enough so that they can communicate with each other before you initially register and configure them.



PCs have a communication distance restriction of ten meters. Please refer to the instruction manuals for information on the communication distance restrictions specific to each device.



Communication interference may occur if any obstructions are located between the devices. Devices may not communicate properly if they have been located, for example, on the ground and first floors of a residence, despite their being within the acceptable distance.

■ **The devices must be in a connectable state**

The devices must recognize each other in order to be connectable for use.

In certain devices, simply turning on the power will not produce a connectable state. Moreover, the energy-saving feature may come into effect after a certain amount of time, which will prevent the devices from being detected. Please refer to the specific product instruction manual for further details.

■ **No other radio wave-emitting devices should be operated nearby**

Microwave ovens, wireless LANs, and other radio wave-emitting devices located nearby may affect Bluetooth™, wireless technology communication.

Please ensure that your devices have been accordingly situated, and that the above devices are not in use when you are operating your Bluetooth device.

■ **The Bluetooth™ wireless technology devices must be switched ON**

Bluetooth™, wireless technology cannot be used if the devices have not been switched ON.

Some PCs and other components will have a Bluetooth™, wireless technology communication switch that is operated independently from the main power. Bluetooth™, wireless technology cannot function if this switch has been turned off.

- Using PCs with onboard Bluetooth™, wireless technology
- When using a Bluetooth™, wireless technology USB adapter or SD card

### 7.3 Varieties of Bluetooth™ wireless technology devices you can use

It is important to understand the concepts of "services" and "profiles" in order to determine whether an intended function can be properly utilized when you use a Bluetooth™ wireless technology device.

#### ■ What is a "profile"?

Examples of Bluetooth™ wireless technology devices include mice and keyboards (input devices), printers (output devices), and wireless modems (communication devices). Functions that can be utilized by such devices are called "services."

In order for these services to be used reliably, Bluetooth™ wireless technology devices are provided with common specifications known as "profiles."

For example, when a PC makes a connection to a device, it obtains the profile of the corresponding device and thereby ascertains which functions (services) the device offers.

As an example, imagine someone who travels overseas.

The traveller is only able to converse properly with their counterpart if both speak a language (English, Japanese, Chinese, etc.) they both understand.



However, no dialogue will occur if they do not share a common language.



In the above example, the traveller and his/her counterpart correspond to the devices, the languages to the profiles, and the dialogues between the two people to the services. The former example refers to a situation where a service can be performed because the devices support a common profile, whereas the latter example refers to a situation where a service cannot be performed because a common profile is not supported.

In other words, you will be able to use Bluetooth™ wireless technology devices that have a profile supported by a PC (the Bluetooth™ Utility in this case).

If the profiles belonging to the device are not supported by the PC, the functions corresponding to those profiles will not be able to be utilized. Also, a device can only be used if its profiles are supported by the PC.



## ■ Types of profiles

The following profiles are supported by the Bluetooth™ Utility:

Term	Definition
DUN	<b>Dial-Up Networking</b> Enables you to establish a dial-up Bluetooth™ wireless technology connection to the Internet or other networks with a wireless modem station, mobile telephone, or similar device.
FAX	<b>FAX</b> Enables you to establish a Bluetooth™ wireless technology connection with a wireless modem station, mobile telephone, or similar device to send or receive a fax.
LAP	<b>LAN Access Profile</b> Enables you to establish a Bluetooth™ wireless technology connection with a LAN access point to access the services of a LAN using PPP.
SPP	<b>Serial Port Profile</b> Enables communication with a device through a virtual serial port configured for a Bluetooth™ wireless technology connection. This can be used for printers and printer adapters with PDAs, using a different method from HCRP or ActiveSync.
HID	<b>Human Interface Device Profile</b> Allows connections to wireless mice, keyboards and other input devices.
HCRP	<b>Hardcopy Cable Replacement Profile</b> Enables printing with a printer driver.
FTP	<b>File Transfer Profile</b> Enables you to browse folders on a wireless device and transfer files to and from the local device.

OPP	<b>Object Push Profile</b> Allows business card data to be exchanged with a wireless device.
A2DP	<b>Advanced Audio Distribution Profile</b> Allows audio data to be exchanged between wireless headsets and other audio devices, as well as allowing high-quality music playback
AVRCP	<b>Audio/Video Remote Control Profile</b> A/V remote control functions such as play and stop. The Bluetooth™ Utility supports remote control operation.
GAVDP	<b>Generic Audio/Video Distribution Profile</b> Basic profile used to support A2DP, AVRCP and other protocols.
HSP	<b>Head Set Profile</b> Profile used for headsets. Used when you want to have a voice conversation over your PC or connect to a mobile phone.
HFP	<b>Hands-Free Profile</b> Profile used for handsfree sets. Used when you want to have a voice conversation over your PC or connect to a mobile phone.
PAN	<b>Personal Area Networking Profile</b> Supports IP base network. Allows connection to an ad-hoc or wired network via an access point.
BIP	<b>Basic Imaging Profile</b> Allows image files to be sent and received after having been converted to a size suitable for the destination. In addition to being able to transfer image files, the Bluetooth™ Utility allows camera shutters to be operated by remote control, as well as other offering other functionalities.

## 7.4 Contents of the Bluetooth™ Utility

The Bluetooth™ Utility is a software tool used to configure a variety of settings once a connection has been established between the PC and the Bluetooth™ wireless technology device. It also facilitates the exchange of files between devices having onboard Bluetooth™ wireless technology.

The Bluetooth™ Utility comprises the following six tools. Descriptions are provided for the functions and the supported profiles for the respective tools.

- Bluetooth Settings
- Bluetooth Manager
- Bluetooth Information Exchanger
- Remote Camera
- Bluetooth Local COM
- Wireless File Transfer

### ■ Bluetooth Settings

This program enables you to easily configure settings when you connect to a Bluetooth™ wireless technology device for the first time. The function of a configured and registered device is displayed on the main window as a connection icon.

As a rule, the device will be connected automatically after having been set up; however, a shortcut can be created for a manual connection, if so required.

Related topics

→"Bluetooth Settings"

### ■ Bluetooth Manager

This program, which appears as a Taskbar icon, monitors and controls the power and operating status of Bluetooth™ wireless technology devices. It can be used to start the Bluetooth Setup Utility, add a new connection, disconnect from a remote device, and perform other tasks.

Related topics

→"Bluetooth Manager"

### ■ Bluetooth Information Exchanger

This program enables you to easily transfer files and images to or exchange business card data with a wireless device by selecting the icon of the counterpart device, or using the right-click menu in Explorer. The wireless devices to which you are connecting must also support the same service functions (FTP, OPP and BIP).

We have some ways to open Bluetooth Information Exchanger as follows.

- Select the menu on [Bluetooth] from [Start]
- Select the [Bluetooth] menu on Explorer
- Select the menu from the Bluetooth™ Wireless Technology Icon in the task tray
- Right-click on the icon in [Bluetooth Settings] by setting the shortcut on [Bluetooth Settings]
- Right-click on the icon in my network or desktop or the shortcut in desktop



Related topics

→"Bluetooth Information Exchanger"

## ■ Remote Camera

Once you connect to a Bluetooth™ wireless technology-compatible digital camera, you will be able to operate it from the PC side and send captured images to the PC.

Related topics

→“Remote Camera”

## ■ Bluetooth Local COM

This program, which is registered in the Control Panel, can create a virtual COM port for use with the Bluetooth™ Utility. If you need to create a client COM port with the Bluetooth Setup Utility, it can be created automatically without having to start the program.

Related topics

→“Bluetooth Local COM”

## ■ Wireless File Transfer

You can send a file wirelessly to another device by right-clicking on the intended file and using the "Sending to Bluetooth Device" menu that appears.

Related topics

→“Wireless File Transfer”

## 7.5 Using the Bluetooth™ Utility

Actual examples of how to establish a connection to a Bluetooth™ wireless technology device using the Bluetooth™ Utility are described in this section.

Also provided are descriptions of more convenient methods as well as detailed information on the Bluetooth™ Utility functions.

- Flow of operation
- Basic settings
- Make the most of your Bluetooth™ wireless technology device
- Advanced features
- Details of Bluetooth™, Utility functions

The Bluetooth™ Utility operates under Windows XP and Windows 2000.

The descriptions in the examples mainly pertain to operation under Windows XP.

Windows XP: Microsoft® Windows® XP Operating System

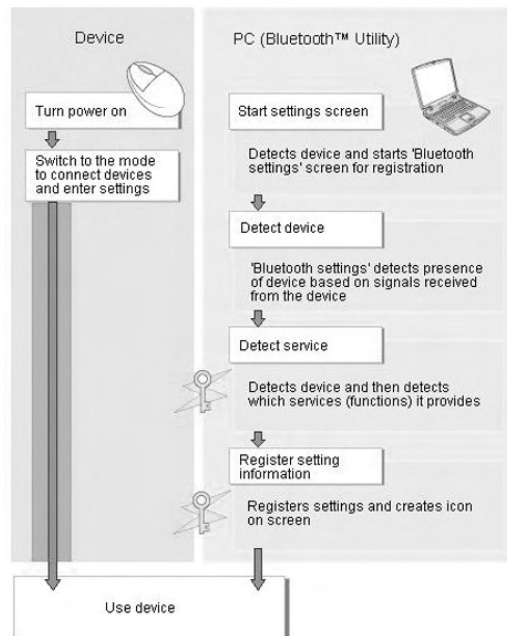
Windows 2000: Microsoft® Windows® 2000 Operating System



## 7.6 Flow of operation

The procedure below is used to set up Bluetooth™ wireless technology devices using the Bluetooth™ Utility.

- It is assumed that the set-up is performed from the [Bluetooth Settings] window.



: Enter Bluetooth passkey (PIN code), if required by the device.

: During these stages of the set-up process, the Bluetooth™ wireless technology device must be set to Connectability mode.

\* Simply turning the power on will activate Connectability mode in certain devices. Please refer to the device instruction manual for further details.

## 7.7 Basic settings

Methods for registering new devices using the Bluetooth™ Utility shall now be described.

As an example, a Bluetooth™ wireless technology-compatible mouse shall be connected and configured using [Bluetooth Settings].

[Bluetooth Settings] provides two set-up methods: "Express Mode" and "Custom Mode."

### • Express Mode

[Bluetooth Settings] will automatically detect and register services. If several services (profiles) are supported by the device, the service that has been set to the highest priority shall be selected and registered. Express Mode is normally recommended for device set-up.

### • Custom Mode

After having been detected, the services supported by the device are displayed as a list, from which you can select the desired function(s). Custom Mode must be used to set up a device if, for example, you wish to use a modem station to send a fax (because in Express Mode, the DUN profile will be automatically selected since it has a higher priority than the FAX profile).

The differences between setting up the same device (a Bluetooth™ wireless technology-compatible mouse) using Express Mode and Custom Mode are described on the following pages.

### • Express Mode Set-up

### • Custom Mode Set-up

## 7.8 Express Mode Set-up

The procedure for setting up the device using Express Mode shall now be described. In this case, a mouse device is used as sample device.

### Starting Bluetooth Settings

#### Procedure

1. Right-click on the Bluetooth™ wireless technology icon in the task tray, and select [Bluetooth Settings] from the menu that appears.



Alternatively, click [Start] → [All Programs] → [Bluetooth] → [Bluetooth Settings].  
(Under Windows 2000, click [Start] → [Programs] → [Bluetooth] → [Bluetooth Settings].)

The [Bluetooth Settings] window will appear when other devices have already been registered.



Please click the [New Connection] button to open the [Add New Connection Wizard] window. If no devices have been registered yet, please proceed directly to “Detecting Bluetooth™ wireless technology Devices.”

2. Switch the mouse power ON to make it connectable.  
Please refer to the mouse instruction manual for details on this procedure.
3. Confirm that [Express Mode] has been selected in the [Add New Connection Wizard (This wizard will create the settings for Bluetooth device connection.)] window, and click on the [Next] button.



Searching for devices will start.



When the mouse has been detected, the name and address of the device will appear in the [Add New Connection Wizard (Select a Device)] window.



If no device is found, please confirm that the device has been made connectable, and click on the [Refresh] button. A further device search will be performed.

4. Select the mouse device name from [Device List] and click on the [Next] button.



Searching for services will start.



- If several services (profiles) are supported by the device, the service that has been set to the highest priority shall be automatically selected and set up in Express Mode. Please use Custom Mode if you wish to select desired services manually.
- When a service has been detected, a window prompting you to enter the Bluetooth passkey (PIN code) may appear. Please enter the passkey and click on the [OK] button. Please refer to your device instruction manual for information on which passkey to use.



- If you have not entered your Bluetooth passkey after a certain amount of time has passed, the connection process will be cancelled for security reasons. Please perform the passkey entry process again.



The connection icons and icon names can be changed.

- Changing a connection icon name
- Changing a connection icon

5. Finally, the [Bluetooth Settings] window will automatically appear and the icons of the registered devices will appear and the devices will be ready to use.

## 7.9 Custom Mode Set-up

The procedure for setting up the device using Custom Mode shall now be described. In this case, a mouse device is used as sample device.

### Starting Bluetooth Settings

#### Procedure

1. Right-click on the Bluetooth™ wireless technology icon in the task tray, and select [Bluetooth Settings] from the menu that appears.



Alternatively, click [Start] → [All Programs] → [Bluetooth] → [Bluetooth Settings].  
(Under Windows 2000, click [Start] → [Programs] → [Bluetooth] → [Bluetooth Settings].)

The [Bluetooth Settings] window will appear when other devices have already been registered.



Please click the [New Connection] button to open the [Add New Connection Wizard] window. If no devices have been registered yet, please proceed directly to “Detecting Bluetooth™ wireless technology Devices.”

2. Switch the mouse power ON to make it connectable.  
Please refer to the mouse instruction manual for details on this procedure.
3. Confirm that [Express Mode] has been selected in the [Add New Connection Wizard (This wizard will create the settings for Bluetooth device connection.)] window, and click on the [Next] button.





Searching for devices will start.



When the mouse has been detected, the name and address of the device will appear in the [Add New Connection Wizard (Select a Device)] window.



! If no device is found, please confirm that the device has been made connectable, and click on the [Refresh] button. A further device search will be performed.

4. Select the mouse device name from [Device List] and click on the [Next] button.



Searching for services will start.



5. Select the desired service and click on the [Next] button



- When a service has been detected, a window prompting you to enter the Bluetooth passkey (PIN code) may appear. Please enter the passkey and click on the [OK] button. Please refer to your device instruction manual for information on which passkey to use.



- If you have not entered your Bluetooth passkey after a certain amount of time has passed, the connection process will be cancelled for security reasons. Please perform the passkey entry process again.

The services supported by the device will be displayed.

! When a device supports several services

If the device supports several services, you can use Custom Mode to manually select the services (profiles) you wish to use from the list that appears under [Select Services].

If Express Mode is used to perform the set-up, the highest-priority service in the device will be automatically selected and configured.

6. Click on the [OK] button.



- When the settings information has been registered, a window prompting you to enter the Bluetooth passkey (PIN code) may appear. Please enter the passkey and click on the [OK] button. Please refer to your device instruction manual for information on which passkey to use.



- If you have not entered your Bluetooth passkey after a certain amount of time has passed, the connection process will be cancelled for security reasons. Please perform the passkey entry process again.

The [Add New Connection Wizard (Connection Name Setup)] window will appear if a service has been properly detected.

7. Select the type and name of the icon to be displayed once the device has been registered, and click on the [Next] button.



- If you wish to change the icon, please click on the [Change Icon] button and select your preferred icon from the list that appears.



8. Click on the [Finish] button



The [Bluetooth Settings] window will appear.  
The icons of the registered devices will appear, and the devices will be ready to use.



The connection icons and icon names can be changed.

- Changing a connection icon name
- Changing a connection icon

## 8 System Setup

### 8.1 Bios Setup

This is a utility in which you can configure hardware to fit your uses.



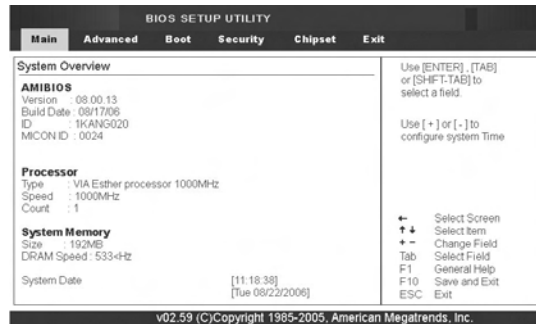
Bios setup is used to configure booting rank when a new hardware. Be careful: Improper configuration may result in critical problems. Set up contents may change to the improvement of the product's functions.

### 8.2 Entering BIOS Setup



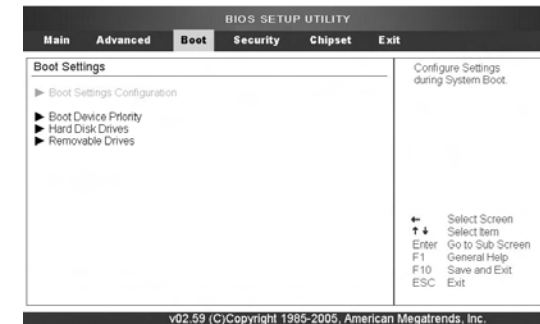
Connect the USB keyboard to the USB port on the right of the system. Then press the power button for 2 seconds. Seeing the screen shown above, press "Del" on the keyboard and enter . Bios setup

### 8.3 Setting Time and Date



- System Time: You can set the time. But if you change the time through Windows the time will change according to that.
- System Date: You can set the date. But if you change the date through Windows the time will change accordingly.

### 8.5 Set Boot

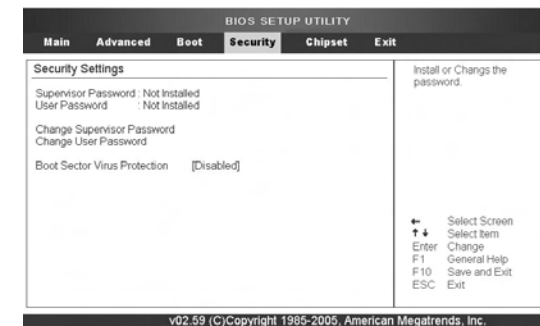


Configure the system's booting rank. Configure the rank between HDD, external ODD, USB Flask CD, and external FDD

### 8.6 Set Security

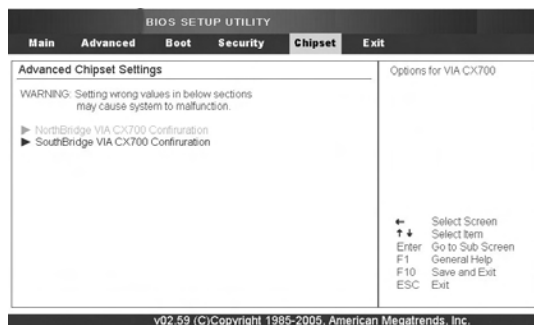


Specifically configures various settings. Be careful: Critical problems may result from improper settings.



Set a password for security. You must use an external keyboard to input the password. You can configure whether to use a password in entering set up or to also use one to boot the system

## 8.7 Set Chipset



Change the settings of the system's Chipset. Be careful: Improper settings may cause critical problems

## 8.8 Save settings



You may save load settings

- Save Changes and Exit
- Discard Changes and Exit
- Discard Changes
- Load Optimal Defaults: Set Bios settings to system optimal mode.
- Load Failsafe Defaults Set Bios settings to system failsafe mode.

## Regulatory Compliance Statements

### Wireless Guidance

Low power, Radio LAN type devices (radio frequency (RF) wireless communication devices), operating in the 2.4 GHz Band, may be present (embedded) in your notebook system. The following section is a general overview of considerations while operating a wireless device.

Additional limitations, cautions, and concerns for specific countries are listed in the specific country sections (or country group sections). The wireless devices in your system are only qualified for use in the countries identified by the Radio Approval Marks on the system rating label. If the country you will be using the wireless device in, is not listed, please contact your local Radio Approval agency for the requirements. Wireless devices are closely regulated and using them may be restricted.

The RF field strength of the wireless device or devices that may be embedded in your notebook are well below all international RF exposure limits as known at this time. Because the wireless devices (which may be embedded in your notebook) emit less energy than permitted by the radio frequency safety standards and recommendations, the manufacturers believe these devices are safe for use. Regardless of the power levels, care should be taken to minimize human contact during normal operation.

This transmitter must not be collocated or operate in conjunction with any other antenna or transmitter except for the installed Bluetooth transmitter. Some circumstances require restrictions on wireless devices. Examples of common restrictions are listed below:



Radio frequency wireless communication can interfere with equipment on commercial aircraft. Current aviation regulations require wireless devices to be turned off while travelling in an airplane. 802.11B/G (also known as wireless Ethernet or Wifi) and Bluetooth communication devices are examples of devices that provide wireless communication.



In environments where the risk of interference to other devices or services is harmful or perceived as harmful, the option to use a wireless device may be restricted or eliminated. Airports, Hospitals, and Oxygen or flammable gas laden atmospheres are limited examples where use of wireless devices may be restricted or eliminated. When in environments where you are uncertain of whether wireless devices can be used, ask the applicable authority for authorization prior to use or turning on the wireless device.



Every country has different restrictions on the use of wireless devices. Since your system is equipped with a wireless device, when travelling between countries with your system, check with the local Radio Approval authorities prior to any move or trip for any restrictions on the use of a wireless device in the destination country.



If your system came equipped with an internal embedded wireless device, do not operate the wireless device unless all covers and shields are in place and the system is fully assembled.



Wireless devices are not user serviceable. Do not modify them in any way. Modification to a wireless device will void the authorization to use it. Please contact the respective manufacturer for servicing.



Only use drivers approved for the country in which the device will be used. See the manufacturer System Restoration Kit, or contact manufacturer Technical Support for additional information. United States of America

## United States of America

### USA and Canada Safety Requirements and Notices

Do not touch or move the antenna while the unit is transmitting or receiving. Do not hold any component containing the radio so that the antenna is very close or touching any exposed parts of the body, especially the face or eyes, while transmitting. Do not operate the radio or attempt to transmit data unless the antenna is connected; if not, the radio may be damaged.

#### Use in specific environments:

The use of wireless devices in hazardous locations is limited by the constraints posed by the safety directives of such environments. The use of wireless devices on airplanes is governed by the Federal Aviation Administration (FAA). The use of wireless devices in hospitals is restricted to the limits set forth by each hospital.



#### Explosive Device Proximity Warning

Do not operate a portable transmitter (such as a wireless network device) near unshielded blasting caps or in an explosive environment unless the device has been modified to be qualified for such use.



#### Using On Aircraft Warning

Regulations of the FCC and FAA prohibit airborne operation of radio-frequency wireless devices because their signals could interfere with critical aircraft instruments.

#### Other Wireless Devices

Safety Notices for Other Devices in the Wireless Network: Refer to the documentation supplied with wireless Ethernet adapters or other devices in the wireless network.



The Part 15 radio device operates on a non-interference basis with other devices operating at this frequency. Any changes or modification to said product not expressly approved by Samsung could void the user's authority to operate this device.

### Unintentional Emitter per FCC Part 15

This device complies with Part 15 of the FCC Rules. Operation are subject to the following two conditions: (1) this device may not cause harmful interference, and (2) this device must accept any interference received, including interference that may cause undesired operations.



This equipment has been tested and found to comply with the limits for a Class B digital device pursuant to Part 15 of the FCC Rules. These limits are designed to provide reasonable protection against harmful interference in a residential installation. This equipment uses and can radiate radio frequency energy and if not installed and used in accordance with the instructions may cause harmful interference. If this equipment does cause harmful interference to radio or television reception, which can be determined by turning the equipment off and on, the user is encouraged to try to correct the interference by following one or more of the following measures:

- Reorient or relocate the receiving antenna.
- Increase the distance between the equipment and receiver.
- Connect the equipment into an outlet on a circuit different from that to which the receiver is connected.
- Consult the dealer or an experienced radio/TV technician for help.

If necessary, users should consult the dealer or an experienced radio/television technician for additional suggestions. Users may find the following booklet helpful: "Something About Interference." This is available at FCC local regional offices. Our company is not responsible for any radio or television interference caused by unauthorized modifications of the



equipment or the substitution or at-tachment of connecting cables and equipment other than those specified by our company. The correction will be the responsibility of the user. Use only shielded data cables with this system.

### **Intentional emitter per FCC Part 15**

Low power, Radio LAN type devices (radio frequency (RF) wireless communication devices), operating in the 2.4 GHz Band, may be present (embedded) in your notebook system. This section is only applicable if these devices are present. Refer to the system label to verify the presence of wireless devices.

Wireless devices that may be in your system are only qualified for use in the United States of America if an FCC ID number is on the system label.

This transmitter must not be collocated or operate in conjunction with any other antenna or trans-mitter except for the installed Bluetooth transmitter.

Operation of this device is subject to the following two conditions: (1) this device may not cause harmful interference, and (2) this device must accept any interference received, including interference that may cause undesired operations of the device.



Wireless devices are not user serviceable. Do not modify them in any way. Modification to a wireless device will void the authorization to use it. Contact the manufacturer for servicing.