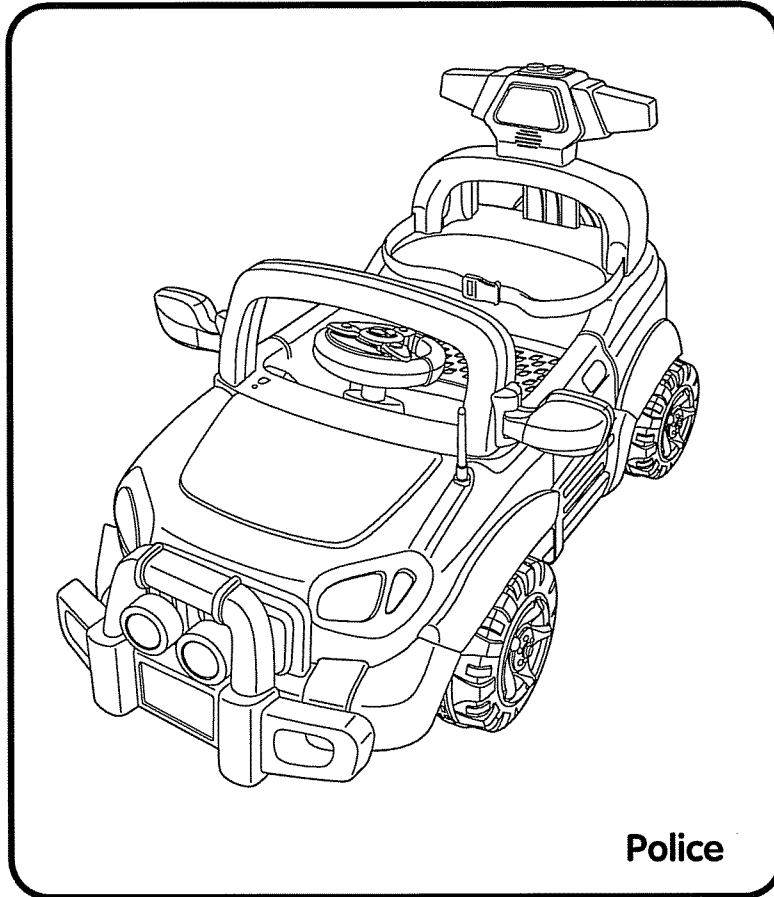


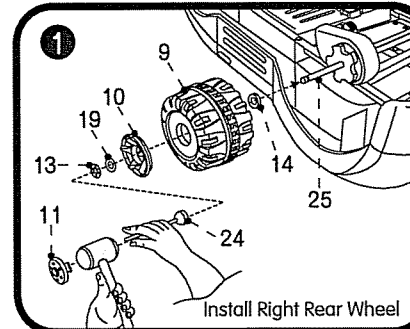
# Chargeable Children Police

Read Operation Instructions Carefully Before Use

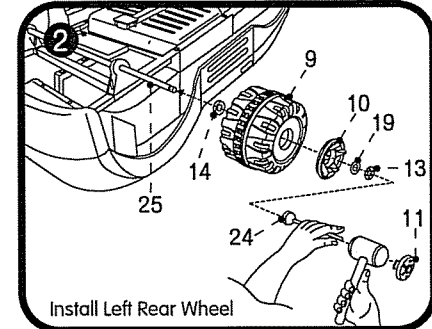


Police

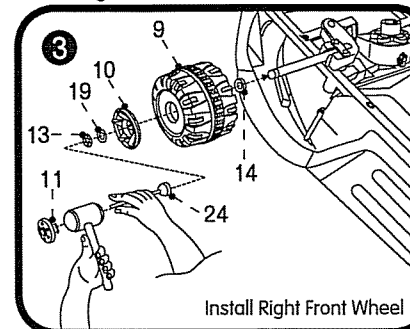
## Assembling Diagram



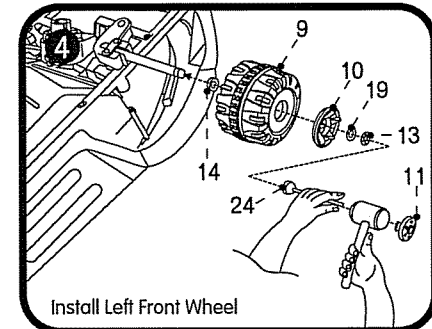
Install Right Rear Wheel



Install Left Rear Wheel

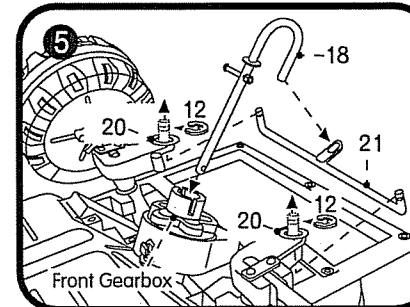


Install Right Front Wheel



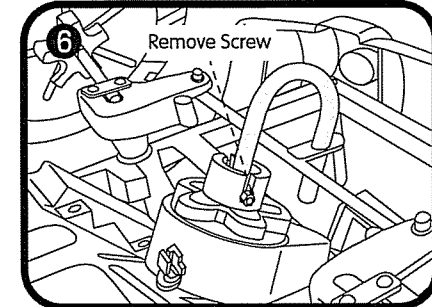
Install Left Front Wheel

With the use of hammer and screw installing stick, insert plastic ring, wheel, large wheel cover, ring, flower ring and fix them into the rear car axle with small wheel cover.



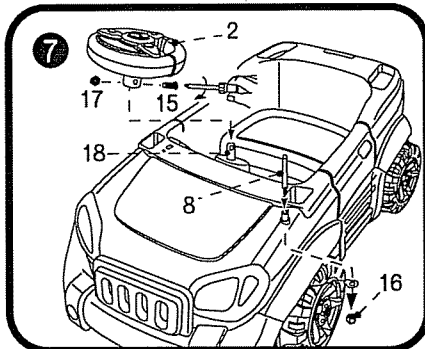
Front Gearbox

Turn over the car body, put the front wheel frame onto the front car position as instructed, insert small ring and lock it up with hook and finally insert the J-shaped stick into the front gearbox and fix it with screw.

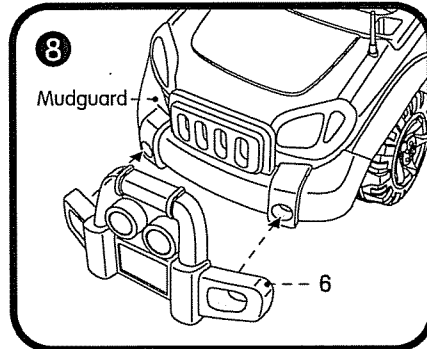


Remove Screw

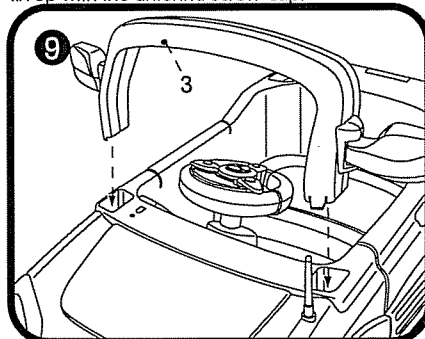
If not using remote control, loosen the screw and remove the J-shaped stick from the front gearbox so as to let children control direction by steering wheel.



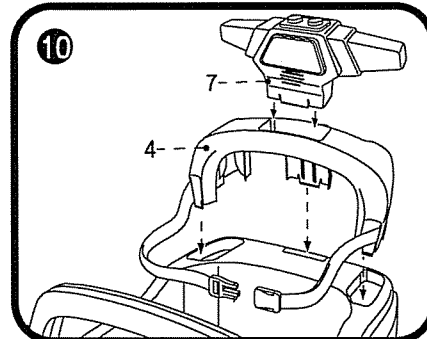
Put the steering wheel onto the J-shaped stick and fix it up with screw. Install the antenna in the front car through the ring at the bottom and then fix up with the antenna screw-cap.



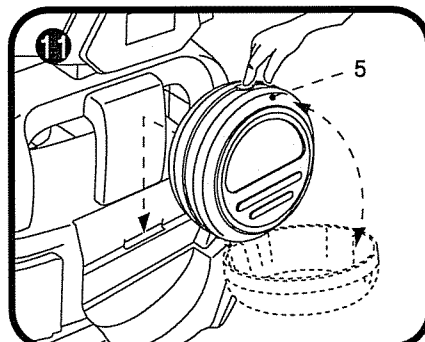
Install the bumper in front of the mudguard as instructed.



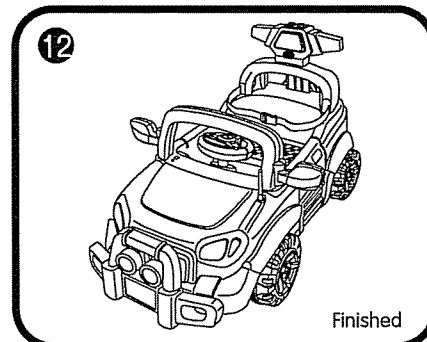
Insert the windscreen frame in front of the car.



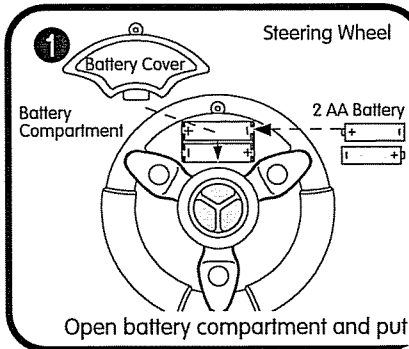
Install the rear wing at the rear part of the car. Then, put the alarm on top of the rear wing.



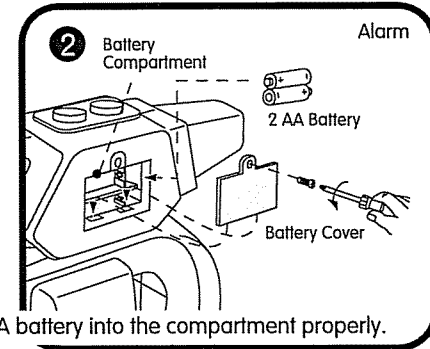
Put the storage box at the back of the car.



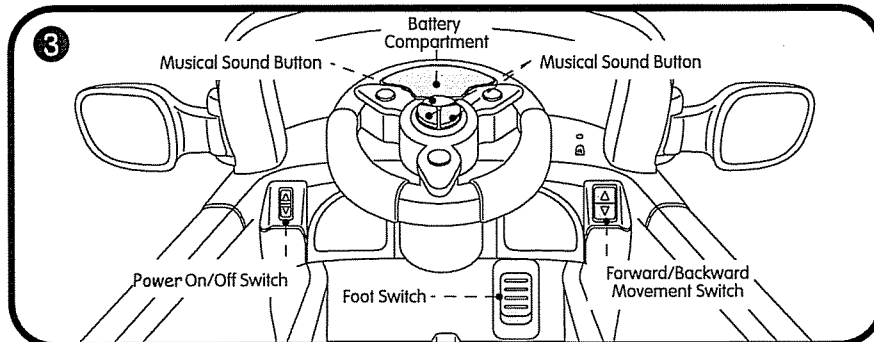
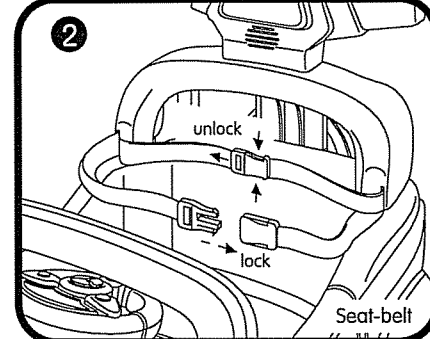
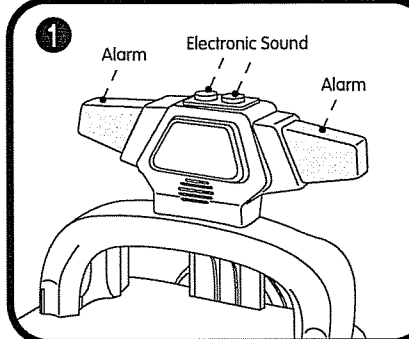
## Changing Batteries



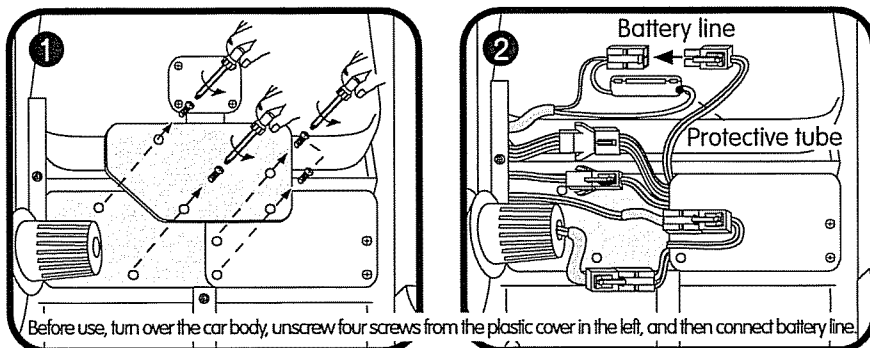
Open battery compartment and put 2AA battery into the compartment properly.



## Operating Function

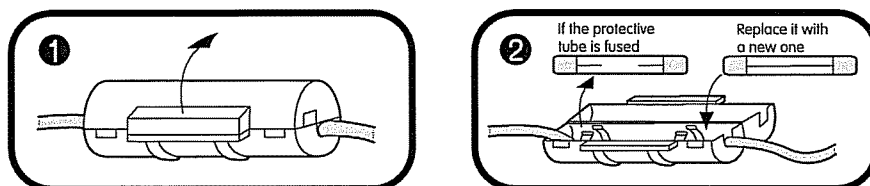


## To Connect Power Supply



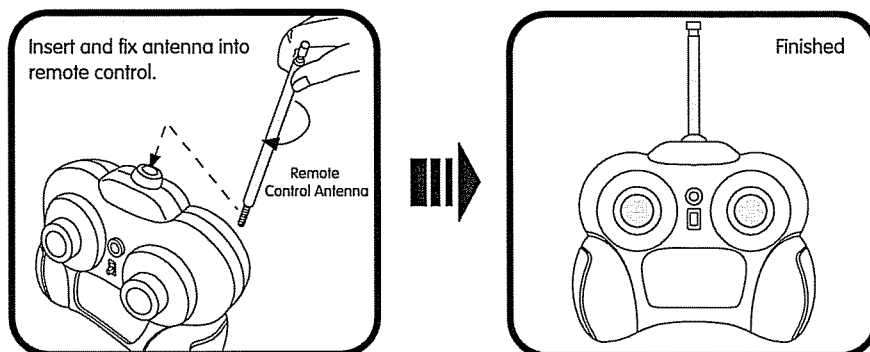
## Operation of Protective Tube

- 1) Protective tube is located under the chassis.
- 2) When the motor is unable to move or charge, please check if the protective tube has been fused.
- 3) In the event of connecting the charger properly, press the foot switch, the motor will move. But if it cannot move, the protective tube may be fused.

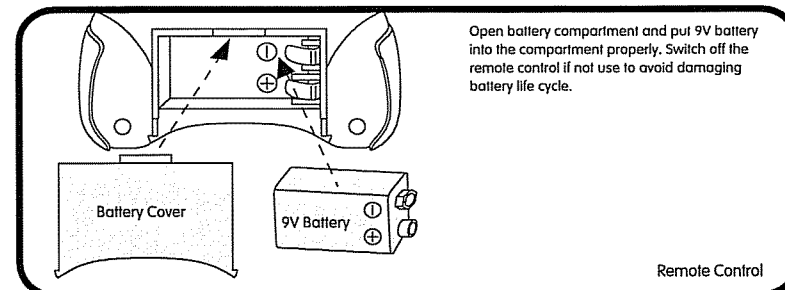


Note : the safety electric current for protective tube is 15A

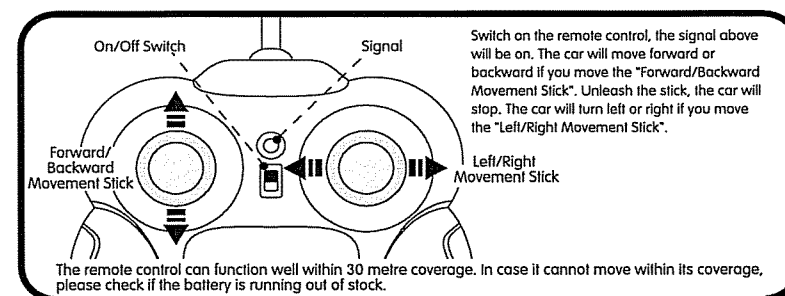
## Install Antenna



## Changing Battery



## Remote Control Function

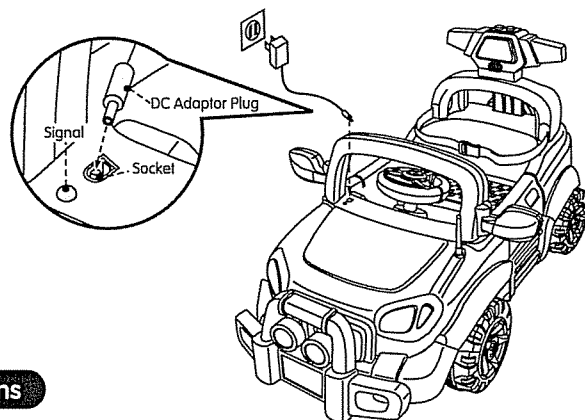


## Normal Operation

- 1) Before use, turn over the car body, connect same color battery lines and main distribution lines together in rear wheel position. Wrongly connect different color lines will cause short circuit.
- 2) The charger holder is located under windscreen frame and the charger is inside the spare wheel storage box. When in use, first to insert the charger DC holder into the car holder and then insert the charger into power supply socket.
- 3) You should recharge the battery for 8-10 hours after driving the car for 1-2 hours. Don't over charge more than 15 hours.
- 4) While charging, both the charger and battery will be slightly warm.

## Battery Maintenance

- 1) Please use the correct charger for charging the battery, or vehicle will be damaged.
- 2) The battery should be charged for 8-10 hours if the speed of car is slower, or the life of battery will be shortened.
- 3) When nonuse of vehicle the battery must be full charged and recharge it every 15 days. This will keep battery in ordinary usage, or battery can't be charged again.



### Technical Specifications

Applicable Age :	3-6 Years Old	
Weight Limit :	30 KGS	
Power Supply :	Battery	
Battery :	Output DC 6V 4.5 AH	
Charging Source :	Input AC 110V 60Hz	Output DC 6V 400mA
Battery-related Time :	Charging Time : 8 - 10 hours	Utility Time : 1 - 2 hours

### Precautions

This operation guide shows you how to ensure children riding the motor with joy and safety. Please read below safety operation guide carefully before use.

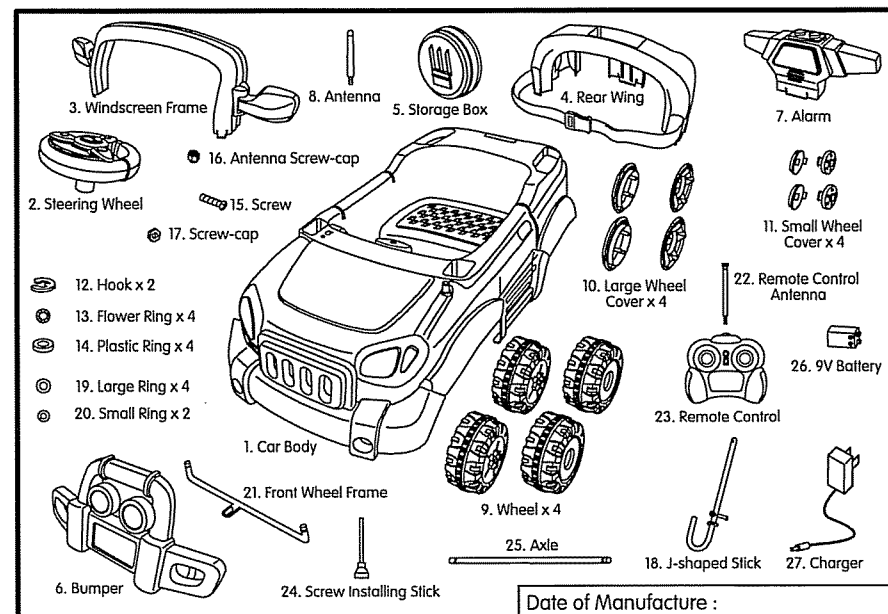
- 1) Battery should be recharged by adults, not by children themselves.
- 2) Children should ride the motor with adult's guidance and instructions.
- 3) The car should be assembled and inspected by adult to see if it is correctly assembled.
- 4) Don't ride the car in such dangerous places as street, road, sleep slopes and beside swimming pool.
- 5) The car should not be overloaded. Its maximum load is 30 kgs.
- 6) This item is only suitable for children of 3-6 years of age.
- 7) Some parts of the car will be damaged if it is improperly ridden.
- 8) When the motion is taken place, don't change direction suddenly, e.g. moving forward to backward or vice versa. Instead, you should stop the car before changing direction.
- 9) Remote control has to be operated by adults, not by children themselves.
- 10) To avoid suffocation, keep all bags away from babies and children. Dispose of all bags immediately.

### Packing List

Please check if the components are complete.

No.	Name	Quantity
1	Car Body	1
2	Steering Wheel	1
3	Windscreen Frame	1
4	Rear Wing	1
5	Storage Box	1
6	Bumper	1
7	Alarm	1
8	Antenna	1
9	Wheel	4
10	Large Wheel Cover	4
11	Small Wheel Cover	4
12	Hook	2
13	Flower Ring	4
14	Plastic Ring	4

No.	Name	Quantity
15	Screw	1
16	Antenna Screw-cap	1
17	Screw-cap	1
18	J-shaped Stick	1
19	Large Ring	4
20	Small Ring	2
21	Front Wheel Frame	1
22	Remote Control Antenna	1
23	Remote Control	1
24	Screw Installing Stick	1
25	Axle	1
26	9V Battery	1
27	Charger	1
28	Product Instruction	1



Date of Manufacture :

## Warning

Changes or modifications to this unit not expressly approved by the party responsible for compliance could void the user's authority to operate the equipment.

## NOTE

This equipment has been tested and found to comply with the limits for a Class B digital device, pursuant to Part 15 of the FCC Rules. These limits are designed to provide reasonable protection against harmful interference in a residential installation. This equipment generates, uses and can radiate radio frequency and, if not installed and used in accordance with the instructions, may cause harmful interference to radio communications.

However, there is no guarantee that interference will not occur in a particular installation. If this equipment does cause harmful interference to radio or television reception, which can be determined by turning the equipment off and on, the user is encouraged to try to correct the interference by one or more of the following measures:

- ☐ Reorient or relocate the receiving antenna.
- ☐ Increase the separation between the equipment and receiver.
- ☐ Connect the equipment into an outlet on a circuit different from that to which the receiver is connected.
- ☐ Consult the dealer or an experienced radio/TV technician for help.

## Trouble-shooting

Trouble	Treatment
1) The motor cannot move	1) To inspect if the outline connector of the battery is connected correctly ?
2) The motor moves very slowly	2) To check if the battery is charged for 8 - 10 hours ?
3) The battery cannot be fully charged	3) To inspect if the charger and battery work well ?