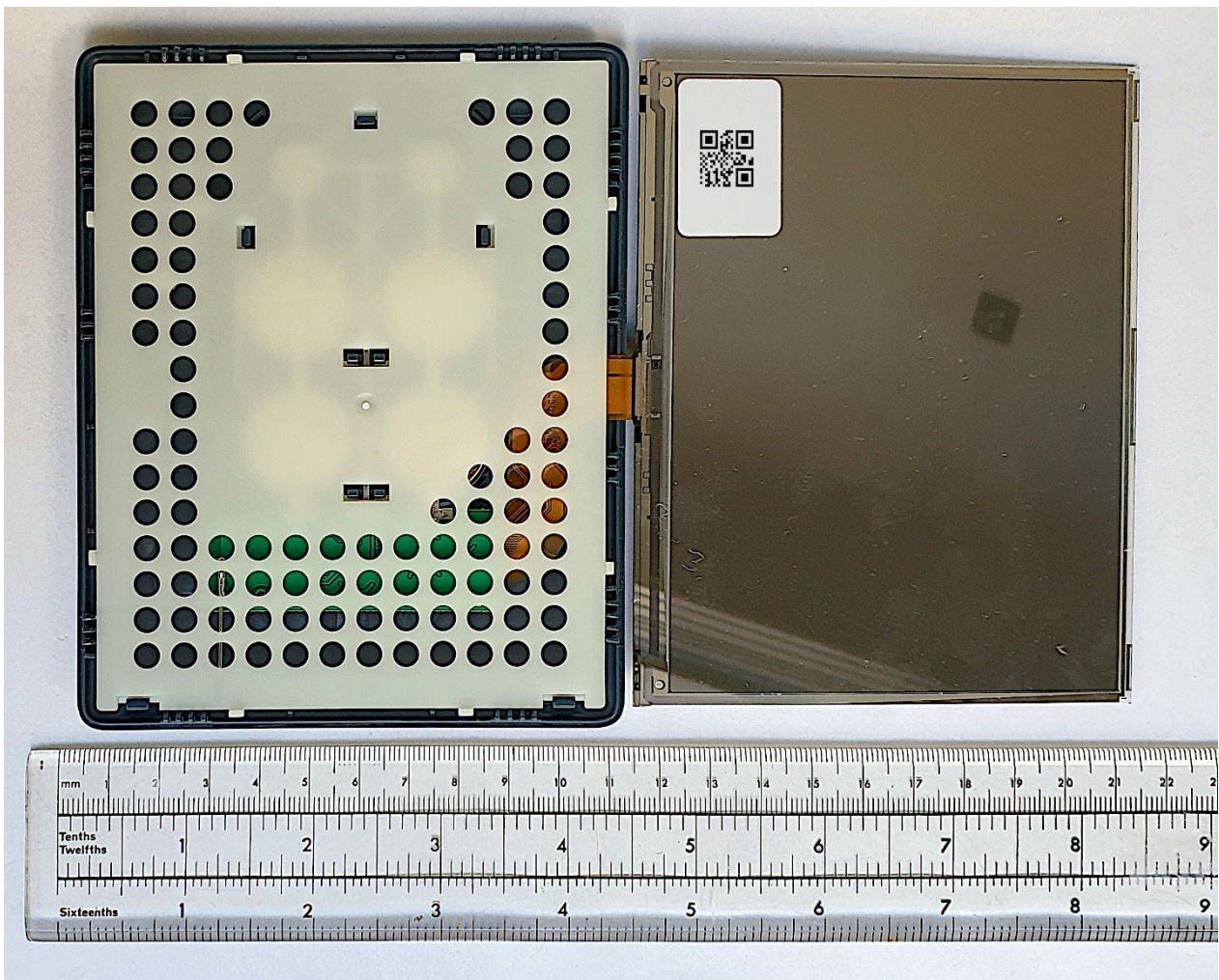
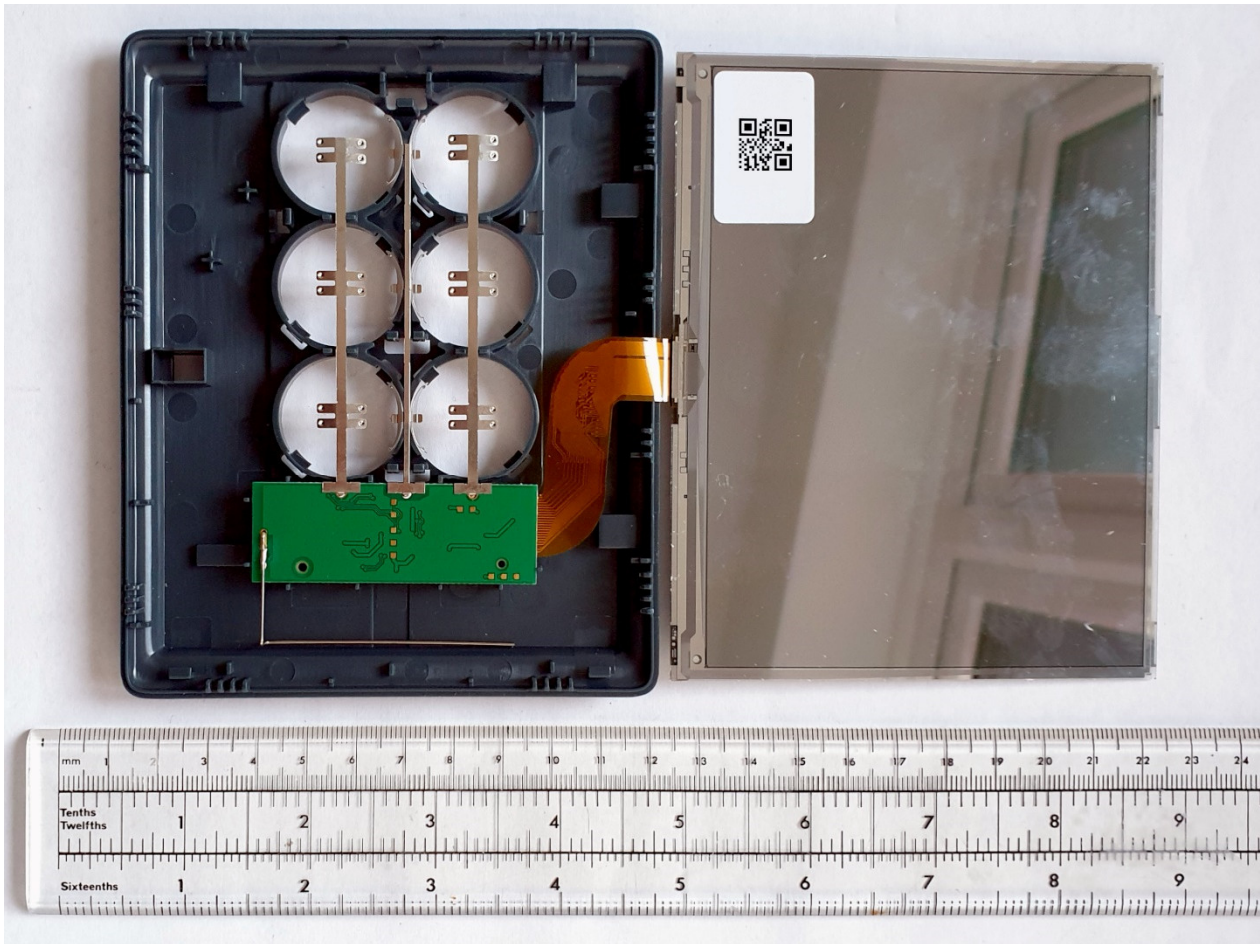


DD60-3A (Chroma Aeon 60) – Front View, with Front Cover removed.

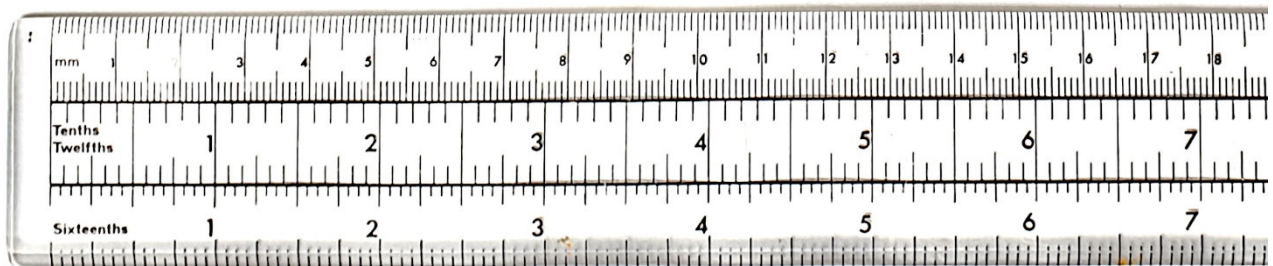


DD60-3A (Chroma Aeon 60) – Front View, with Front Cover removed and display “flipped”.



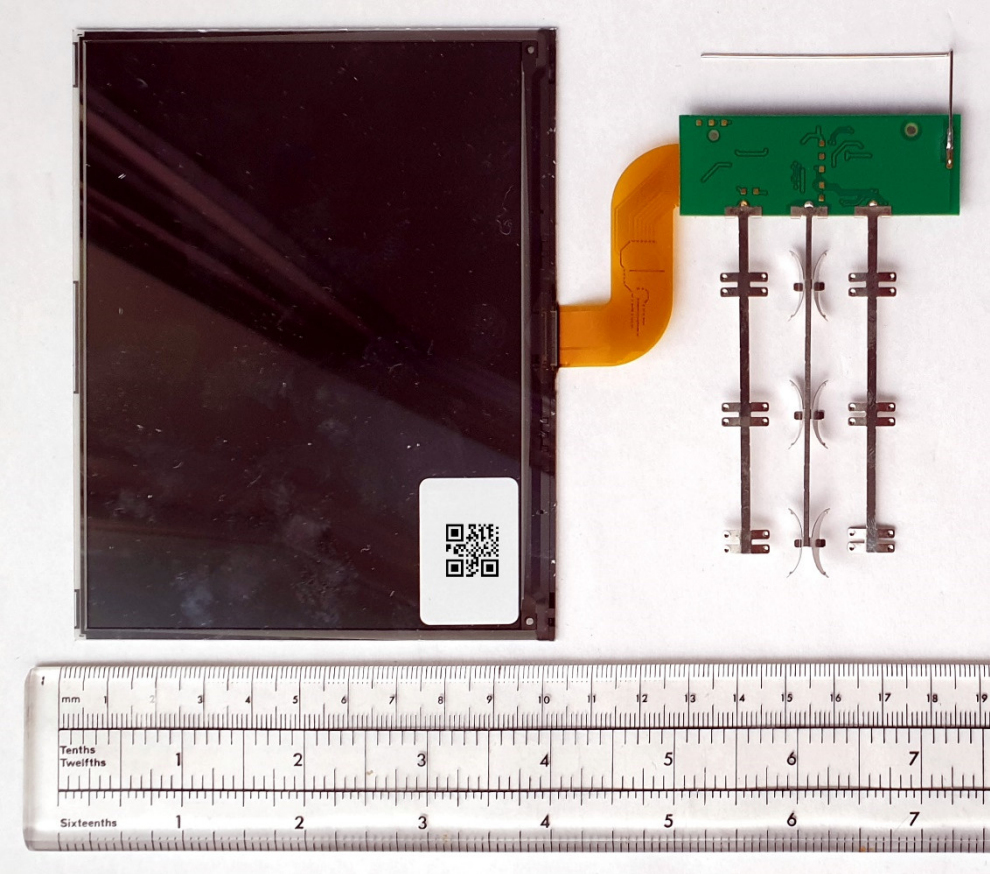


DD60-3A (Chroma Aeon 60) – Front View, with Front Cover removed display “flipped” and display support removed to reveal PCB.

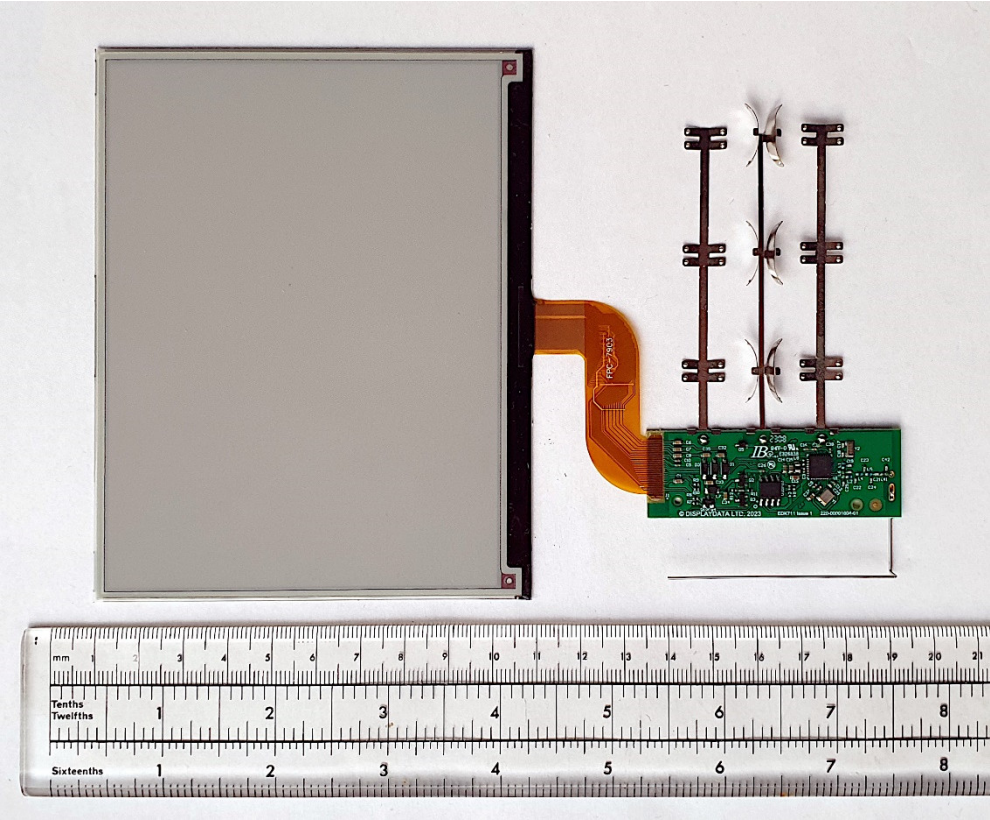


DD60-3A (Chroma Aeon 60) – Rear View, Battery Cover and Coin cells removed.





DD60-3A (Chroma Aeon 60) – PCB and Display Glass Rear View.



DD60-3A (Chroma Aeon 60) – PCB and Display Glass Front View.