



Applicant:	Kyocera
FCC ID:	V65SA002
Report #:	CT-SA002-9B1-0210-R0

EXHIBIT 9 APPENDIX B1: SAR DISTRIBUTION PLOTS (HEAD)

CELL

Applicant:	Kyocera
FCC ID:	V65SA002
Report #:	CT-SA002-9B1-0210-R0

Test Laboratory: Comptest/Kyocera

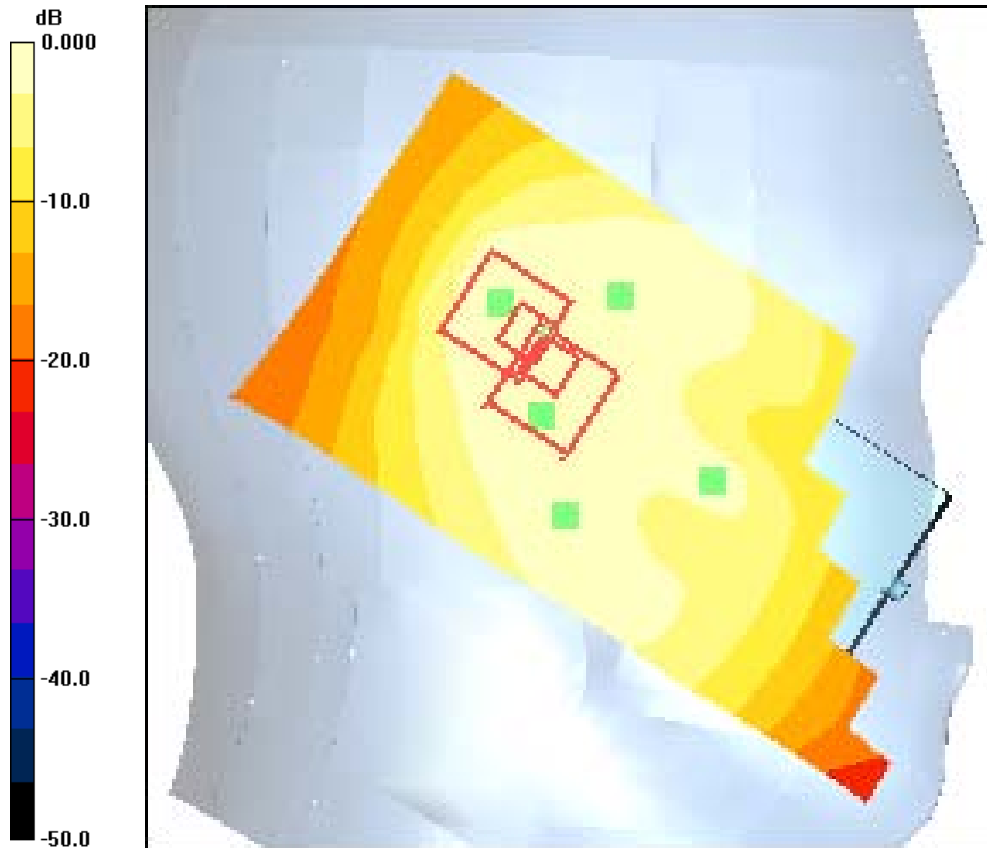
Date: 2/2/2010

FCC SA002 CDMA-800, Ch383 Left Cheek Phone Slide Closed

Communication System: CDMA-800, Frequency: 836.49 MHz, Duty Cycle: 1:1
 Medium: Head 835 MHz, Medium parameters used: $f = 836.5 \text{ MHz}$; $\sigma = 0.91 \text{ mho/m}$; $\epsilon_r = 42.1$; $\rho = 1000 \text{ kg/m}^3$
 Phantom: SAM 12, Phantom section: Left Section
DASY4 Configuration:
 Probe: ES3DV3 - SN3035, ConvF(6.12, 6.12, 6.12), Calibrated: 8/20/2009
 Sensor-Surface: 4mm (Mechanical Surface Detection),
 Electronics: DAE3 Sn494, Calibrated: 4/22/2009
 Measurement SW: DASY4, V4.7 Build 80
 Postprocessing SW: SEMCAD, V1.8 Build 186
Temperature: Room T = 21.8 ± 1 deg C, Liquid T = 22.0 ± 1 deg C

CDMA-800 Ch383 LC/Zoom Scan (7x7x7)/Cube 0: Measurement grid: dx=5mm, dy=5mm, dz=5mm
 Reference Value = 8.63 V/m; Power Drift = 0.070 dB
 Peak SAR (extrapolated) = 0.110 W/kg
SAR(1 g) = 0.069 mW/g; SAR(10 g) = 0.045 mW/g
 Maximum value of SAR (measured) = 0.075 mW/g

CDMA-800 Ch383 LC/Zoom Scan (7x7x7)/Cube 1: Measurement grid: dx=5mm, dy=5mm, dz=5mm
 Reference Value = 8.63 V/m; Power Drift = 0.070 dB
 Peak SAR (extrapolated) = 0.091 W/kg
SAR(1 g) = 0.072 mW/g; SAR(10 g) = 0.053 mW/g
 Maximum value of SAR (measured) = 0.076 mW/g



0 dB = 0.080mW/g

Applicant:	Kyocera
FCC ID:	V65SA002
Report #:	CT-SA002-9B1-0210-R0

Test Laboratory: Comptest/Kyocera

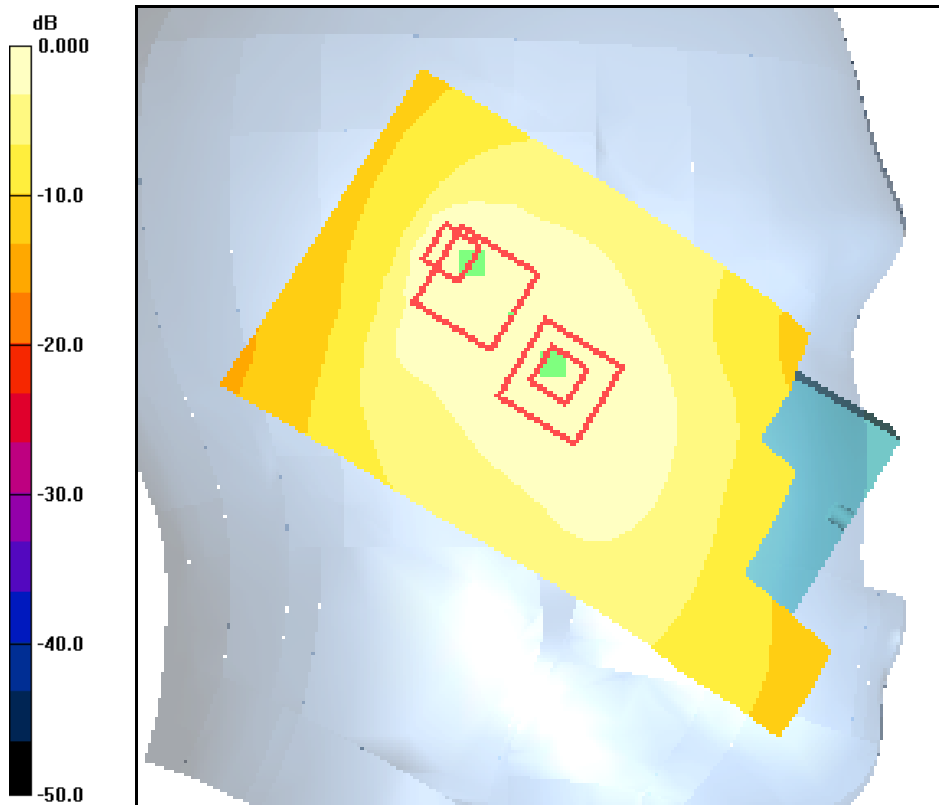
Date: 2/2/2010

FCC SA002 CDMA-800, Ch383 Left Tilt Phone Slide Closed

Communication System: CDMA-800, Frequency: 836.49 MHz, Duty Cycle: 1:1
 Medium: Head 835 MHz, Medium parameters used: $f = 836.5 \text{ MHz}$; $\sigma = 0.91 \text{ mho/m}$; $\epsilon_r = 42.1$; $\rho = 1000 \text{ kg/m}^3$
 Phantom: SAM 12, Phantom section: Left Section
DASY4 Configuration:
 Probe: ES3DV3 - SN3035, ConvF(6.12, 6.12, 6.12), Calibrated: 8/20/2009
 Sensor-Surface: 4mm (Mechanical Surface Detection),
 Electronics: DAE3 Sn494, Calibrated: 4/22/2009
 Measurement SW: DASY4, V4.7 Build 80
 Postprocessing SW: SEMCAD, V1.8 Build 186
Temperature: Room T = 21.8 +/- 1 deg C, Liquid T = 22.0 +/- 1 deg C

CDMA-800 Ch383 LT/Zoom Scan (7x7x7)/Cube 0: Measurement grid: dx=5mm, dy=5mm, dz=5mm
 Reference Value = 7.29 V/m; Power Drift = 0.118 dB
 Peak SAR (extrapolated) = 0.119 W/kg
SAR(1 g) = 0.049 mW/g; SAR(10 g) = 0.033 mW/g
 Maximum value of SAR (measured) = 0.057 mW/g

CDMA-800 Ch383 LT/Zoom Scan (7x7x7)/Cube 1: Measurement grid: dx=5mm, dy=5mm, dz=5mm
 Reference Value = 7.29 V/m; Power Drift = 0.118 dB
 Peak SAR (extrapolated) = 0.082 W/kg
SAR(1 g) = 0.065 mW/g; SAR(10 g) = 0.049 mW/g
 Maximum value of SAR (measured) = 0.068 mW/g



0 dB = 0.065mW/g

Applicant:	Kyocera
FCC ID:	V65SA002
Report #:	CT-SA002-9B1-0210-R0

Test Laboratory: Comptest/Kyocera

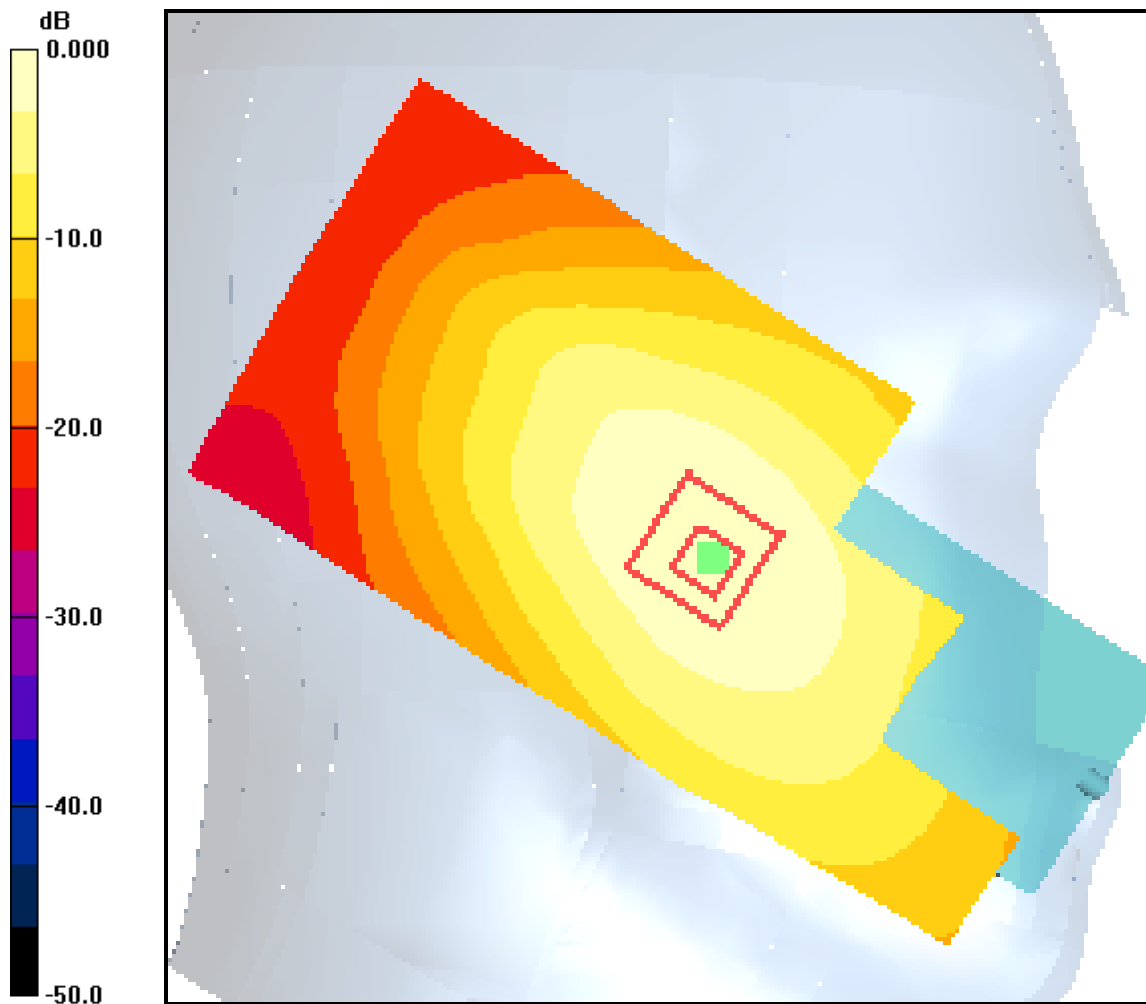
Date: 2/2/2010

FCC SA002 CDMA-800, Ch383 Left Cheek Phone Slide Open

Communication System: CDMA-800, Frequency: 836.49 MHz, Duty Cycle: 1:1
 Medium: Head 835 MHz, Medium parameters used: $f = 836.5 \text{ MHz}$; $\sigma = 0.91 \text{ mho/m}$; $\epsilon_r = 42.1$; $\rho = 1000 \text{ kg/m}^3$
 Phantom: SAM 12, Phantom section: Left Section
DASY4 Configuration:
 Probe: ES3DV3 - SN3035, ConvF(6.12, 6.12, 6.12), Calibrated: 8/20/2009
 Sensor-Surface: 4mm (Mechanical Surface Detection),
 Electronics: DAE3 Sn494, Calibrated: 4/22/2009
 Measurement SW: DASY4, V4.7 Build 80
 Postprocessing SW: SEMCAD, V1.8 Build 186
Temperature: Room T = 21.8 ± 1 deg C, Liquid T = 22.0 ± 1 deg C

CDMA-800 Ch383 LC/Zoom Scan (7x7x7)/Cube 0: Measurement grid: dx=5mm, dy=5mm, dz=5mm

Reference Value = 8.71 V/m; Power Drift = 0.093 dB
 Peak SAR (extrapolated) = 0.714 W/kg
SAR(1 g) = 0.535 mW/g; SAR(10 g) = 0.377 mW/g
 Maximum value of SAR (measured) = 0.570 mW/g

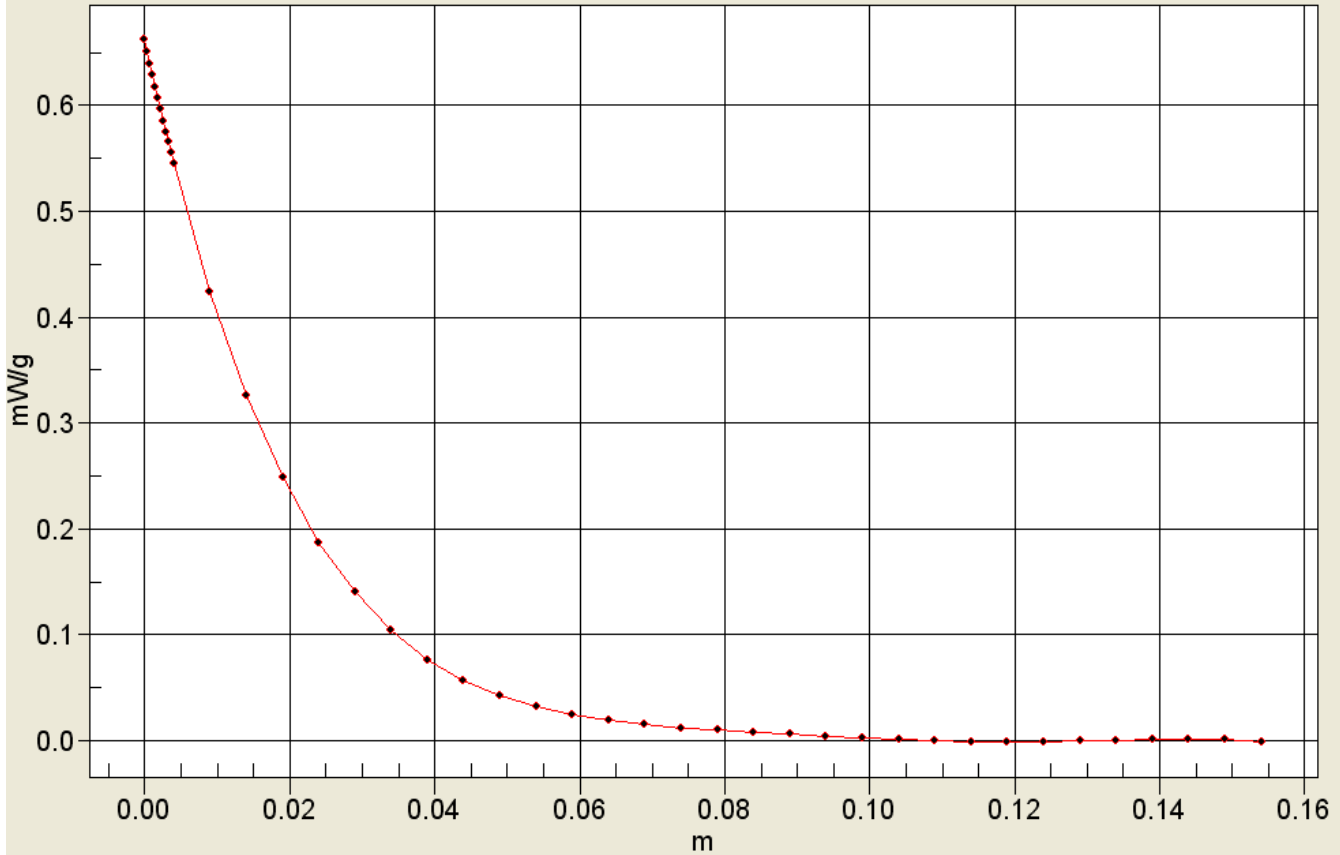


0 dB = 0.578mW/g



Applicant:	Kyocera
FCC ID:	V65SA002
Report #:	CT-SA002-9B1-0210-R0

Interpolated SAR(x,y,z,f0)
SAR; Z Scan: Value Along Z, X=0, Y=0



Test Laboratory: Comptest/Kyocera

Date: 2/2/2010

FCC SA002 CDMA-800, Ch383 Left Tilt Phone Slide Open

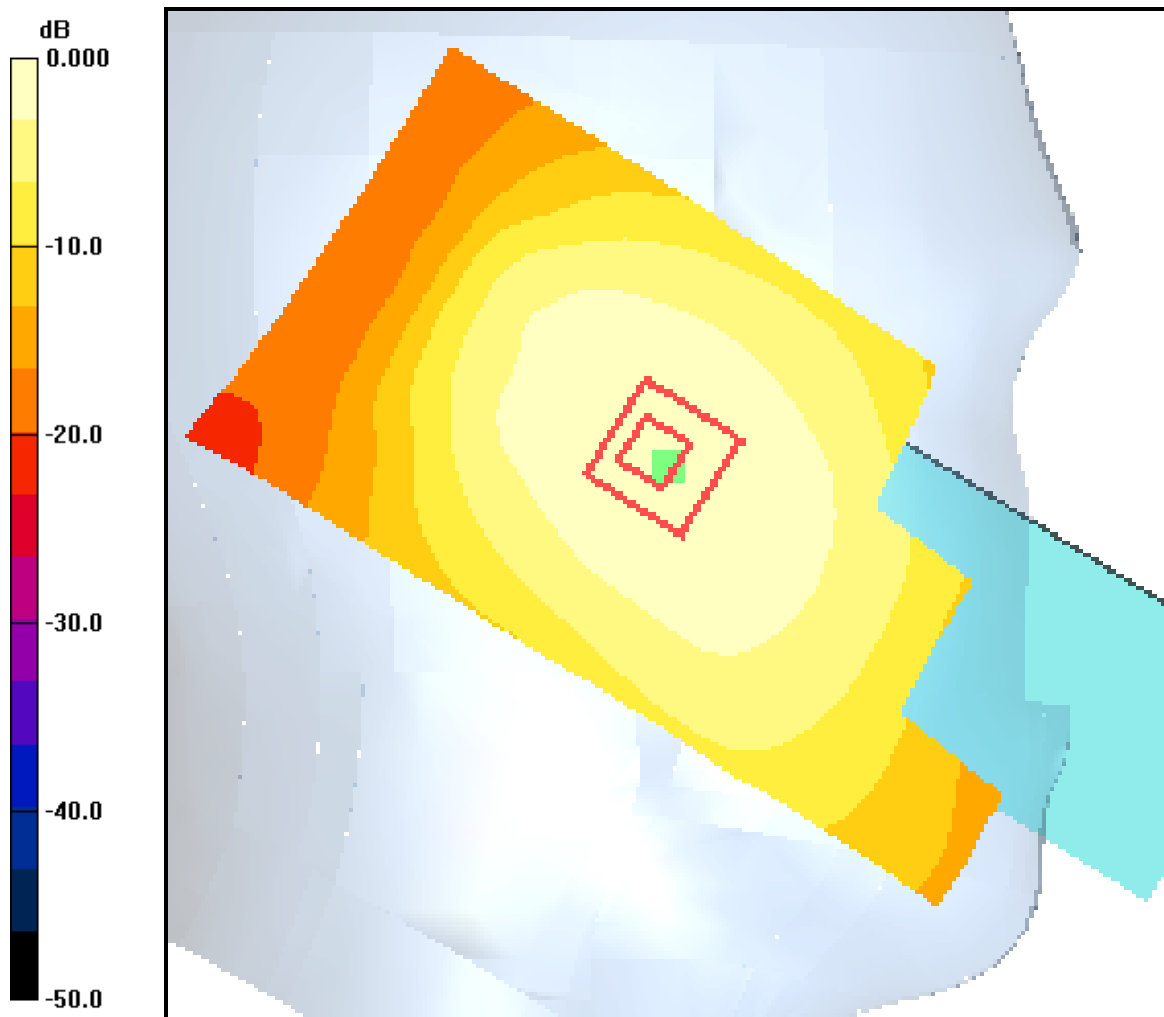
Communication System: CDMA-800, Frequency: 836.49 MHz, Duty Cycle: 1:1
 Medium: Head 835 MHz, Medium parameters used: $f = 836.5 \text{ MHz}$; $\sigma = 0.91 \text{ mho/m}$; $\epsilon_r = 42.1$; $\rho = 1000 \text{ kg/m}^3$
 Phantom: SAM 12, Phantom section: Left Section

DASY4 Configuration:

Probe: ES3DV3 - SN3035, ConvF(6.12, 6.12, 6.12), Calibrated: 8/20/2009
 Sensor-Surface: 4mm (Mechanical Surface Detection),
 Electronics: DAE3 Sn494, Calibrated: 4/22/2009
 Measurement SW: DASY4, V4.7 Build 80
 Postprocessing SW: SEMCAD, V1.8 Build 186
Temperature: Room T = 21.8 1 deg C, Liquid T = 22.0 1 deg C

CDMA-800 Ch383 LT/Zoom Scan (7x7x7)/Cube 0: Measurement grid: dx=5mm, dy=5mm, dz=5mm

Reference Value = 13.4 V/m; Power Drift = 0.071 dB
 Peak SAR (extrapolated) = 0.369 W/kg
SAR(1 g) = 0.290 mW/g; SAR(10 g) = 0.216 mW/g
 Maximum value of SAR (measured) = 0.306 mW/g



0 dB = 0.302mW/g

Applicant:	Kyocera
FCC ID:	V65SA002
Report #:	CT-SA002-9B1-0210-R0

Test Laboratory: Comptest/Kyocera

Date: 2/2/2010

FCC SA002 CDMA-800, Ch383 Right Cheek Phone Slide Closed

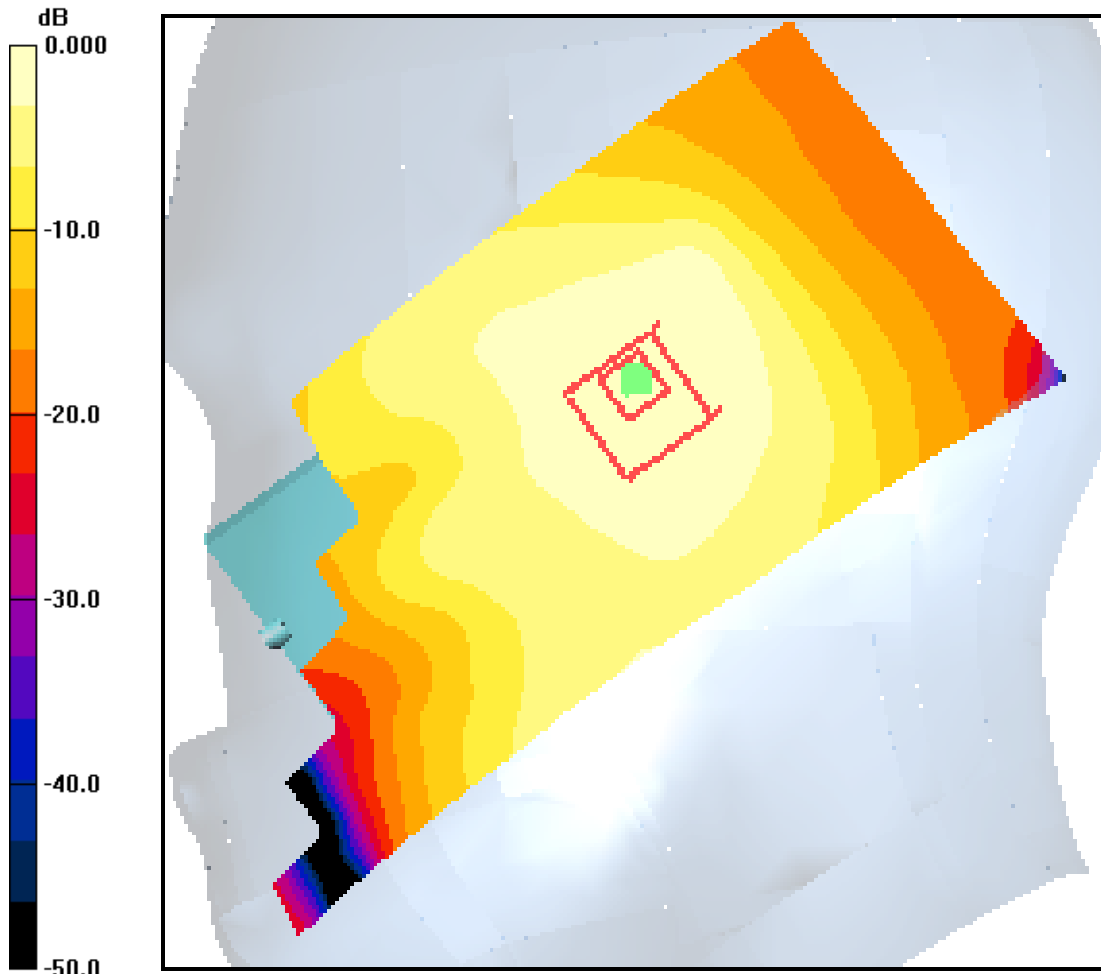
Communication System: CDMA-800, Frequency: 836.49 MHz, Duty Cycle: 1:1
 Medium: Head 835 MHz, Medium parameters used: $f = 836.5 \text{ MHz}$; $\sigma = 0.91 \text{ mho/m}$; $\epsilon_r = 42.1$; $\rho = 1000 \text{ kg/m}^3$
 Phantom: SAM 12, Phantom section: Right Section

DASY4 Configuration:

Probe: ES3DV3 - SN3035, ConvF(6.12, 6.12, 6.12), Calibrated: 8/20/2009
 Sensor-Surface: 4mm (Mechanical Surface Detection),
 Electronics: DAE3 Sn494, Calibrated: 4/22/2009
 Measurement SW: DASY4, V4.7 Build 80
 Postprocessing SW: SEMCAD, V1.8 Build 186
Temperature: Room T = 21.8 ± 1 deg C, Liquid T = 22.0 ± 1 deg C

CDMA-800 Ch383 RC/Zoom Scan (7x7x7)/Cube 0: Measurement grid: dx=5mm, dy=5mm, dz=5mm

Reference Value = 8.95 V/m; Power Drift = -0.163 dB
 Peak SAR (extrapolated) = 0.139 W/kg
SAR(1 g) = 0.097 mW/g; SAR(10 g) = 0.072 mW/g
 Maximum value of SAR (measured) = 0.102 mW/g



0 dB = 0.106mW/g

Applicant:	Kyocera
FCC ID:	V65SA002
Report #:	CT-SA002-9B1-0210-R0

Test Laboratory: Comptest/Kyocera

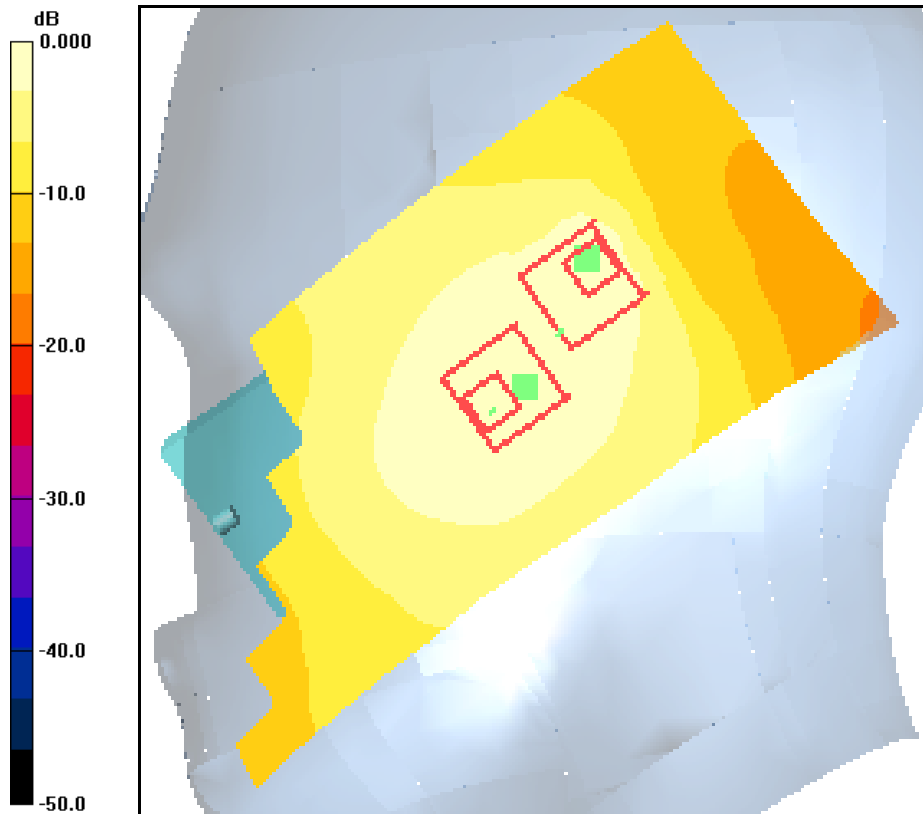
Date: 2/2/2010

FCC SA002 CDMA-800, Ch383 Right Tilt Phone Slide Closed

Communication System: CDMA-800, Frequency: 836.49 MHz, Duty Cycle: 1:1
 Medium: Head 835 MHz, Medium parameters used: $f = 836.5 \text{ MHz}$; $\sigma = 0.91 \text{ mho/m}$; $\epsilon_r = 42.1$; $\rho = 1000 \text{ kg/m}^3$
 Phantom: SAM 12, Phantom section: Right Section
DASY4 Configuration:
 Probe: ES3DV3 - SN3035, ConvF(6.12, 6.12, 6.12), Calibrated: 8/20/2009
 Sensor-Surface: 4mm (Mechanical Surface Detection),
 Electronics: DAE3 Sn494, Calibrated: 4/22/2009
 Measurement SW: DASY4, V4.7 Build 80
 Postprocessing SW: SEMCAD, V1.8 Build 186
Temperature: Room T = 21.8 +/- 1 deg C, Liquid T = 22.0 +/- 1 deg C

CDMA-800 Ch383 RT/Zoom Scan (7x7x7)/Cube 0: Measurement grid: dx=5mm, dy=5mm, dz=5mm
 Reference Value = 7.73 V/m; Power Drift = -0.101 dB
 Peak SAR (extrapolated) = 0.095 W/kg
SAR(1 g) = 0.067 mW/g; SAR(10 g) = 0.049 mW/g
 Maximum value of SAR (measured) = 0.076 mW/g

CDMA-800 Ch383 RT/Zoom Scan (7x7x7)/Cube 1: Measurement grid: dx=5mm, dy=5mm, dz=5mm
 Reference Value = 7.73 V/m; Power Drift = -0.101 dB
 Peak SAR (extrapolated) = 0.117 W/kg
SAR(1 g) = 0.051 mW/g; SAR(10 g) = 0.032 mW/g
 Maximum value of SAR (measured) = 0.056 mW/g



0 dB = 0.071mW/g

Applicant:	Kyocera
FCC ID:	V65SA002
Report #:	CT-SA002-9B1-0210-R0

Test Laboratory: Comptest/Kyocera

Date: 2/2/2010

FCC SA002 CDMA-800, Ch383 Right Cheek Phone Slide Open

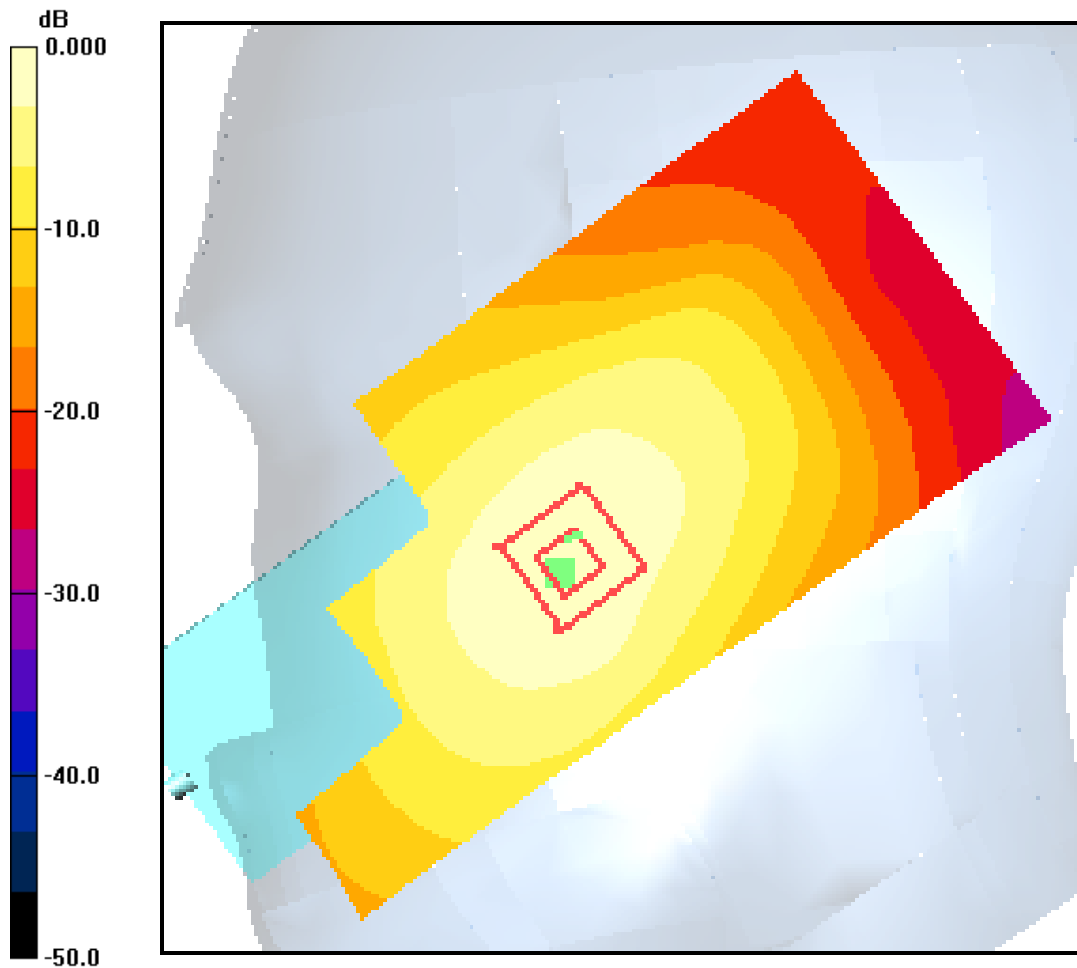
Communication System: CDMA-800, Frequency: 836.49 MHz, Duty Cycle: 1:1
 Medium: Head 835 MHz, Medium parameters used: $f = 836.5 \text{ MHz}$; $\sigma = 0.91 \text{ mho/m}$; $\epsilon_r = 42.1$; $\rho = 1000 \text{ kg/m}^3$
 Phantom: SAM 12, Phantom section: Right Section

DASY4 Configuration:

Probe: ES3DV3 - SN3035, ConvF(6.12, 6.12, 6.12), Calibrated: 8/20/2009
 Sensor-Surface: 4mm (Mechanical Surface Detection),
 Electronics: DAE3 Sn494, Calibrated: 4/22/2009
 Measurement SW: DASY4, V4.7 Build 80
 Postprocessing SW: SEMCAD, V1.8 Build 186
Temperature: Room T = 21.8 +/- 1 deg C, Liquid T = 22.0 +/- 1 deg C

CDMA-800 Ch383 RC/Zoom Scan (7x7x7)/Cube 0: Measurement grid: dx=5mm, dy=5mm, dz=5mm

Reference Value = 9.14 V/m; Power Drift = 0.067 dB
 Peak SAR (extrapolated) = 0.762 W/kg
SAR(1 g) = 0.565 mW/g; SAR(10 g) = 0.391 mW/g
 Maximum value of SAR (measured) = 0.597 mW/g

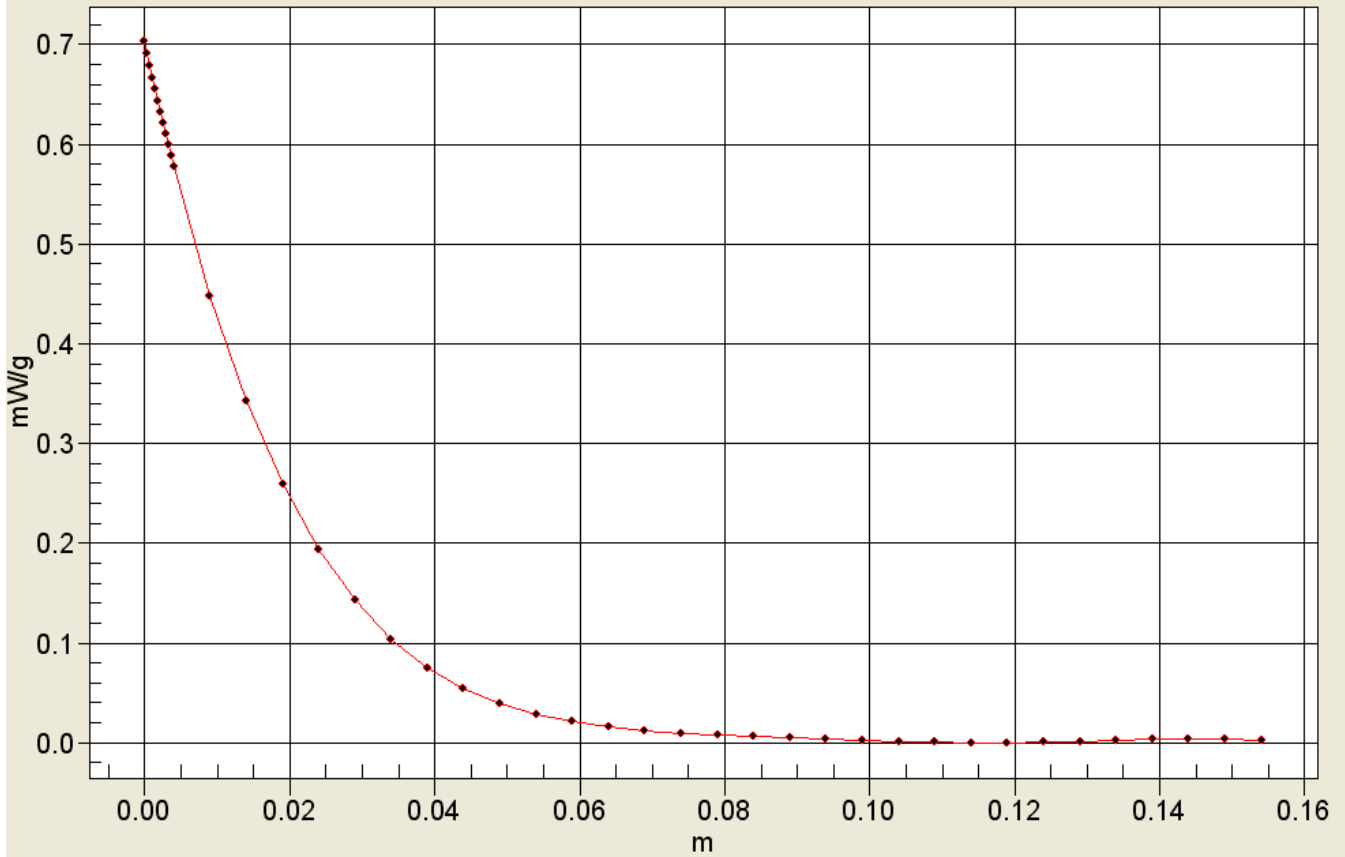


0 dB = 0.619mW/g



Applicant:	Kyocera
FCC ID:	V65SA002
Report #:	CT-SA002-9B1-0210-R0

Interpolated SAR(x,y,z,f0)
SAR; Z Scan: Value Along Z, X=0, Y=0



Applicant:	Kyocera
FCC ID:	V65SA002
Report #:	CT-SA002-9B1-0210-R0

Test Laboratory: Comptest/Kyocera

Date: 2/2/2010

FCC SA002 CDMA-800, Ch383 Right Tilt Phone Slide Open

Communication System: CDMA-800, Frequency: 836.49 MHz, Duty Cycle: 1:1
 Medium: Head 835 MHz, Medium parameters used: $f = 836.5 \text{ MHz}$; $\sigma = 0.91 \text{ mho/m}$; $\epsilon_r = 42.1$; $\rho = 1000 \text{ kg/m}^3$
 Phantom: SAM 12, Phantom section: Right Section

DASY4 Configuration:

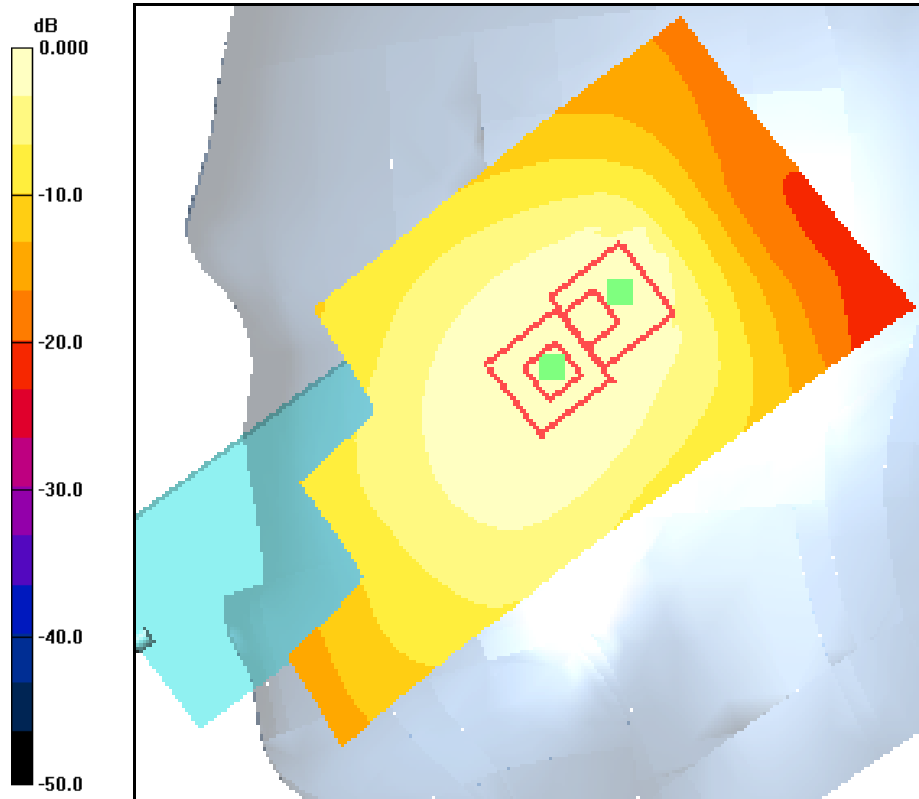
Probe: ES3DV3 - SN3035, ConvF(6.12, 6.12, 6.12), Calibrated: 8/20/2009
 Sensor-Surface: 4mm (Mechanical Surface Detection),
 Electronics: DAE3 Sn494, Calibrated: 4/22/2009
 Measurement SW: DASY4, V4.7 Build 80
 Postprocessing SW: SEMCAD, V1.8 Build 186
Temperature: Room T = 21.8 +/- 1 deg C, Liquid T = 22.0 +/- 1 deg C

CDMA-800 Ch383 RT/Zoom Scan (7x7x7)/Cube 0: Measurement grid: dx=5mm, dy=5mm, dz=5mm

Reference Value = 14.3 V/m; Power Drift = 0.030 dB
 Peak SAR (extrapolated) = 0.396 W/kg
SAR(1 g) = 0.312 mW/g; SAR(10 g) = 0.231 mW/g
 Maximum value of SAR (measured) = 0.330 mW/g

CDMA-800 Ch383 RT/Zoom Scan (7x7x7)/Cube 1: Measurement grid: dx=5mm, dy=5mm, dz=5mm

Reference Value = 14.3 V/m; Power Drift = 0.030 dB
 Peak SAR (extrapolated) = 0.369 W/kg
SAR(1 g) = 0.263 mW/g; SAR(10 g) = 0.171 mW/g
 Maximum value of SAR (measured) = 0.301 mW/g



0 dB = 0.334mW/g