



Thank you for purchasing the X ROCKER!

DO NOT RETURN THIS PRODUCT TO THE STORE. CALL 1-800-242-5355 FOR TROUBLE SHOOTING ADVICE

Welcome to the world of interactive audio. With your new X ROCKER you can now not only hear your music but actually FEEL it. Whether you are listening to music, watching a movie, or playing a game, you will be able to become a part of it.

Get ready to experience sound as you never have!

Thank you for your purchase. We know you will enjoy your X ROCKER experience as much as we do.

CAUTION: IF YOU ARE EXPERIENCING HEART RELATED PROBLEMS, PLEASE CONSULT WITH YOUR DOCTOR BEFORE USING THIS PRODUCT.

P1

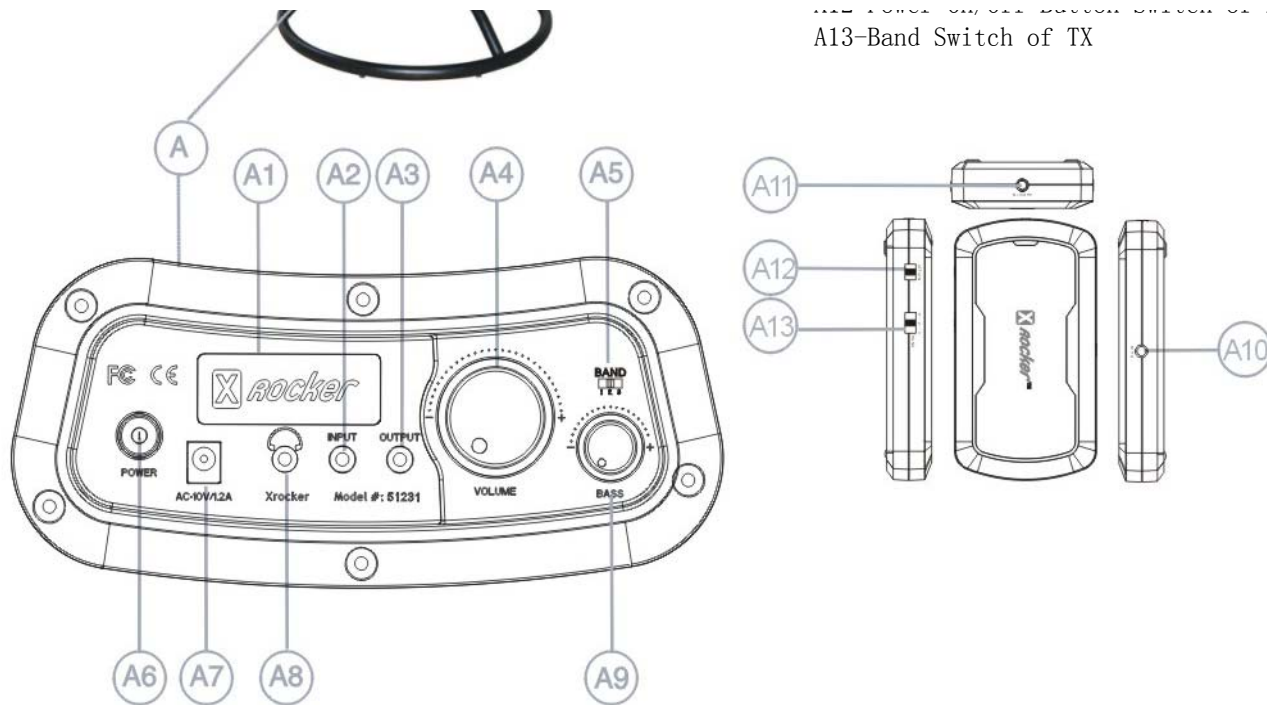


FEATURES

A-Control Panel

- A1-Power Indicator Light of x-rocker
- A2-Audio Input Jack
- A3-Audio Output for Multi-user
- A4-Volume Adjustment
- A5-BAND of x-rocker
- A6-Power On/Off Button Switch of x-rocker
- A7-10V AC Power Input Jack of x-rocker
- A8-Headphone Plug in Jack
- A9-Sub Volume Adjustment
- A10-3V DC Power Input Jack of RX
- A11-Audio Input Jack of RX
- A12-Power On/Off Button Switch of RX
- A13-Band Switch of TV

A13-Band Switch of TX



*SOME PARTS MAY VARY SLIGHTLY

Pocket Underneath the Xrocker

P2

B-Accessories Supplied with X ROCKER

B1-RCA Stereo to 3.5mm stereo plug cable(1 pc)

B2-INPUT:120V AC 60Hz 18W

OUTPUT:10V AC 1200mA 12WAC Main POWER Adapter

B3-RCA Female-to-Female Plug Adapter(2 pcs)

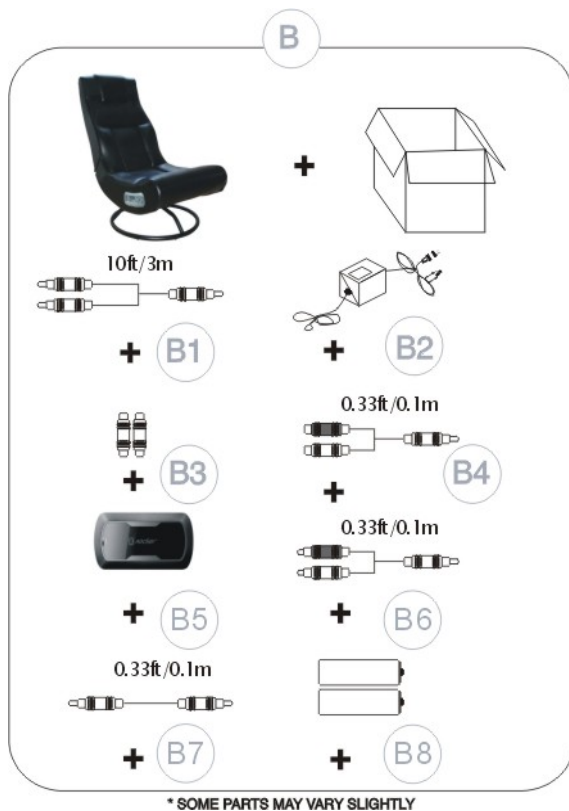
B4-RCA Female-to-male 3.5mm stereo plug cable(1pc)

B5-TX Box

B6-RCA Stereo to 3.5mm stereo plug cable(1pc)

B7-3.5mm stereo plug to 3.5mm Stereo plug cable (1pc)

B8-AAA Battery(2 pcs)



II. TX / RX specification:

- 1) TX Power supply 3V DC
- 2) TX Current 40mA
- 3) RX Current 20mA
- 4) RX Transmission distance: <30M (No buildings or other barriers)
- 5) Environmental temperature -10°C~70°C
- 6) Modulation mode: FSK
- 6) TX Work frequency 914, 914.5, 915MHz
- 7) RX Work frequency 914, 914.5, 915MHz
- 8) TX Power <10dBm
- 9) RX Sensitivity:-100dBm
- 10)RX frequency range 50Hz~13KHz
- 11)Second harmonic suppression: -40dB
- 12)Band quantity: 3 channels

P3

WARRANTY PAGE

Limited Warranty

Ace Bayou warrants this product(including any accessories)against defects in material and workmanship for a period of(12)months from the date of first consumer purchase.This warranty is enforceable only by the original purchaser.ALL DAMAGED OR MISSING PARTS MUST BE REPORTED WITHIN 14 DAYS OF PURCHASE.

This warranty covers all defects in material and workmanship in this product,but DOES NOT COVER the following.

1. Damage,deterioration or malfunction resulting from:

a. Acts of God,accident,misuse,abuse,negligence,improper installation,maintenance or operation,or failure to follow the instructions contained in this Owners Manual.

b.Any damage in the shipment of the products. (Claims must be presented to the carrier)

c.Repair,attempted repair,or modifications ty anyone other than the Ace Bayou Service Center.

2.Any unit which has been modified of attempted to be modified or altered in anyway whatsoever.

3.Normal wear and periodic maintenance.

4.Any unit used for industrial or commercial purposes(including rental).

5.Products sold AS IS or WITH ALL FAULTS,or consumables(such as fuses,batteries,etc).

6.Customer instruction installation,set up adjustments or signal reception problems

Ace Bayou will repair or replace (at it's discretion)units covered by shis warranty,without charge to the consumer for labor or materials.YOU ARE RESPONSIBLE FOR INITIAL SHIPPING CHARGES.Homwever,we will pay the return shipping charges to any destination within the USA if repairs are covered by the warranty.

TO OBTANIN WARRANTY SERVICE ,please obtain a R.A.N. (Return Authorization Number)from the toll free number below before shipping the product to the Ace Bayou Service Center.Warranty registrations are required for warranty coverage.Warranty registrations must be received within 14days of purchase.

REPAIR OR REPLACEMENT AS PROVIDED UNDER THIS WARRANTY IS THE EXCLUSIVE REMEDY OF THE CONSUMER.ACE BAYOU SHALL NOT BE LIABEL FOR ANY INCIDENTAL OR CONSEQUENTIAL DAMAGES FOR BREACH OF ANY EXPRESSED OR IMPLIED WARRANTY ON THIS PRODUCT.EXCEPT TO THE EXTENT PROHIBITED BY APPLICABLE LAW,ANY IMPLIED AWRRANTIES,INCLUDING WARRANTIES OF MERCHANTABILITY AND FITNESS FOR A PARTICULAR PURPOSE,ARE LIMITED IN DURATION TO THE LENGTH OF THIS WARRANTY.

Some states do not allow the exclusion or limitation of incidental or consequential damages,or allow limitations on how long and implied warranty lasts,so the above limitations may not apply to you.

FCC NOTE:
THE MANUFACTURER IS NOT RESPONSIBLE FOR ANY RADIO OR TV INTERFERENCE CAUSED BY UNAUTHORIZED MODIFICATIONS TO THIS EQUIPMENT. SUCH MODIFICATIONS COULD VOID THE USER' S AUTHORITY TO OPERATE THE EQUIPMENT.

This device complies with Part 15 of the FCC Rules.
Operation is subject to the following two conditions:
1. This device may not cause harmful interference, and
2. This device must accept any interference received,including interference that may cause undesired operation

For service assistance,product information,or to locate a dealer nearest you please call or write to:
(DO NOT SHIP ANYTHING WITHOUT CONTACTING US FIRST.DO NOT SHIP ANY PARTS OF WHOLE UNITS TO THIS ADDRESS FOR REPAIR.)

Ace Bayou Corp
P. O. BOX 3308
New ORLEANS, LA 70177
(800)242-5355
service@acebayou.com

IMPORTANT
You must keep your original retail receipt as proof of purchase.
For further information on how to order accessories for this product,please visit our website at:
www.thexrocker.com

P4

WIRE MODE CONNECTION GUIDE

DIAGRAM 1 XBOX™ add XBOX 360™,PLAYSTATION2™,GAMECUBE™

GAME SYSTEMS
TV
yellow
VIDEO INPUT
AUDIO INPUT

DIAGRAM 2 HOME THEATER & SATELLITE
TV/DVD/VCR/SATELLITE/RECELVER

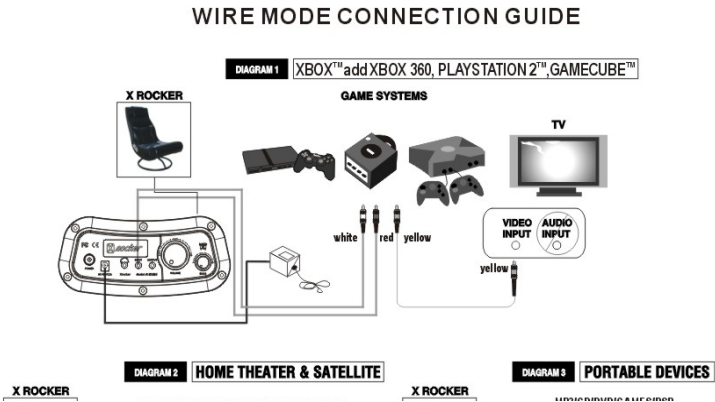


DIAGRAM 3 PORTABLE DEVICES

MP3/CD/DVD/GAMES/PSP

AUDIO OUTPUT

HEADPHONE JACK

DIAGRAM 4 MULTI-USER CONNECTION

AUDIO OUTPUT

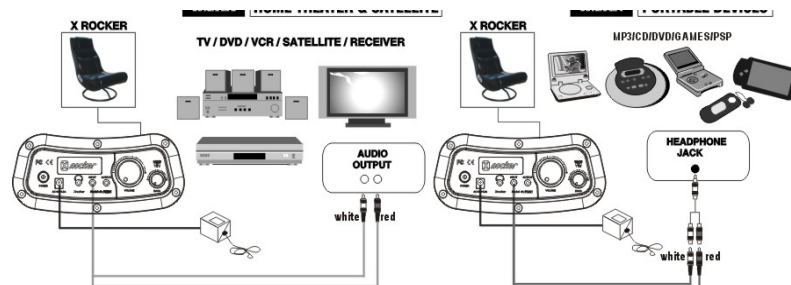
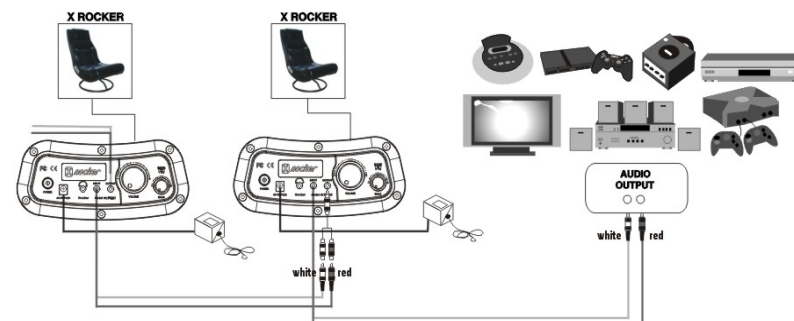


DIAGRAM 4 MULTI-USER CONNECTION



WIRELESS MODE CONNECTION GUIDE

DIAGRAM 1 XBOX™ add XBOX 360™, PLAYSTATION2™, GAMECUBE™

GAME SYSTEMS

TV

yellow

VIDEO INPUT

AUDIO INPUT

DIAGRAM 2 HOME THEATER & SATELLITE

TV/DVD/VCR/SATELLITE/RECEIVER

DIAGRAM 3 PORTABLE DEVICES

MP3/CD/DVD/GAMES/PSP

AUDIO OUTPUT

HEADPHONE JACK

DIAGRAM 4 MULTI-USER CONNECTION

AUDIO OUTPUT

WIRELESS MODE CONNECTION GUIDE

DIAGRAM 1 XBOX™ add XBOX 360™, PLAYSTATION2™, GAMECUBE™

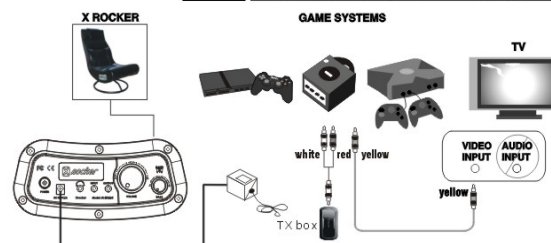


DIAGRAM 2 HOME THEATER & SATELLITE

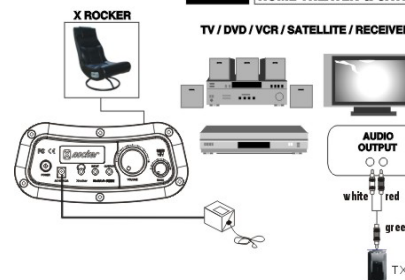
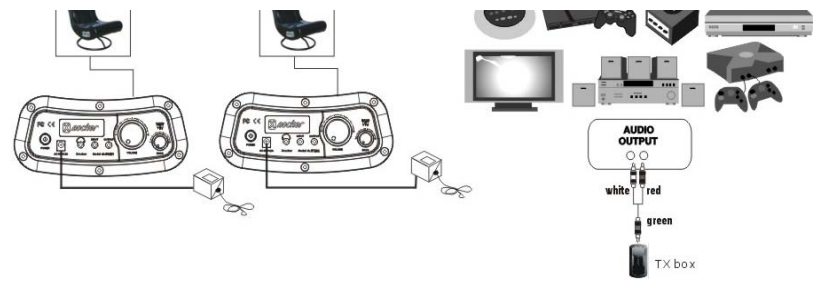


DIAGRAM 3 PORTABLE DEVICES



DIAGRAM 4 MULTI-USER CONNECTION





FUNCTIONS:

- .Foldable construction for ease of storage and portability
- .Side control panel with volume,bass control,and input/output jacks,And band switch.
- .Ergonomic design with full back support
- .Hardwood frame construction with dual layer foam cover for extra comfort
- .Easy to clean,heavy duty,upholstery grade vinyl cover
- .Built in storage compartment under chair
- .With TX & RX

READ BEFORE USAGE:

- .Always make sure hinge is locked before moving unit
- .Always make sure hinge is locked before sitting in the X ROCKER
- .Excessive use of audio equipment could lead to hearing loss
- .Children under the age of 13 should not use this product without adult supervision
- .Strictly for indoor use-do not expose to direct sunlight,moisture or extreme temperatures
- .If cover becomes wet.disconnect power immediately and don't use until completely dry
- .Never try to remove cover or any components to avoid injury or death from electrical shock
- .When you use the wireless mode,you should connect the audio cable to the RX and make sure no more audio input to X ROCKER, or the device will be damaged
- .Max input of TX box is 1V, it will be distortion(fuzzy) , when input is over 1V,when you enjoy the music,if you feel the Rocker speaker is still fuzzy when the volume is mini;maybe the output of sound source is very tough.Then you can reduce the volume of sound source at reasonable place to play down the distortion.

PICTURE OUT OF BOX

POSITIONING FOR SECURING PIN AND VELCRO FLAP

SITTING POSITION





PICTURE OUT OF BOX



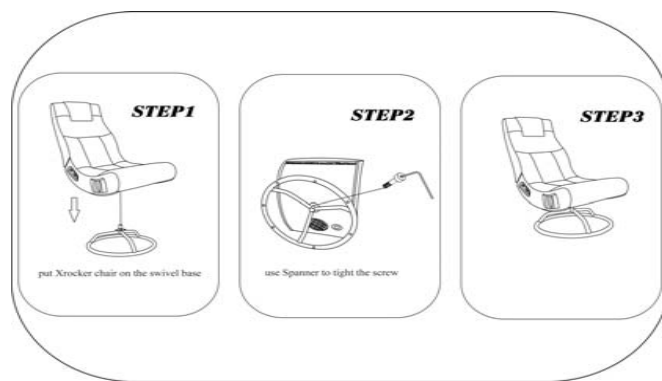
POSITIONING FOR SECURING
PIN AND VELCRO FLAP



SITTING POSITION

SET UP

- 1.Lift X Rocker out of box by opening the top,turning the box over (DO NOT LET THE NUIT FALL OUT)and sliding the box off of the unit.Do not grab sides,which may lead to accidental speaker damage.
- 2.Set the unit on the ground and flip it around until the head rest and seat are facing the ground.
- 3.Insert pin into closure.Pull and secure the Velcro™ flap to hide pin and closure.
- 4.Review the set up diagrams to familiarize yourself with X Rockers components,accessories,and set-UP.
- 5.Remove all included accessories from the built in storage compartment located under the chair
- 6.Carefully turn chair over.
- 7.Locate the input/output panel at the foot of the seat.When you use a wire mode, make sure that the control panel is not more than 10ft/3 meters away from the audio and 6ft/2 meters away from power. When you use a wireless mode,make sure that the control panel is not more than 100ft/30 meters from the audio and 6ft/2 meters from power.
- 8.Unpack the power adapter and connect it to the main power outlet, then to the power jack on the control panel. (A7)
- 9.When you use a wire mode,press the power button and confirm that the power Indicator light(A1) is on. When you use a wireless mode,press the power button and confirm that the power Indicator light(A1) is on,turning on the power of TX box confirm the indictor light of that box is on ,and check the place which the band of the TX box is at the same band as RX in X ROCKER .
- 10.Follow the connection diagrams, it shows connection of the X rocker to the audio source of your choice for wire and wireless uses.
- 11.Adjust the bass and volume levels to your preference...start rocking



TROUBLE SHOOTING

- Unable to connect to game console -

Most game consoles are shipped from the manufacturers with an Audio/Video RCA cable. The A/V RCA cable has three RCA plugs: a video plug (yellow) and two audio plugs (red and white). If your gaming console came with an A/V RCA cable, please follow the instructions supplied by the game console manufacturer for setting up your gaming console and connecting it to the television. Note that you must leave the red and white audio jacks on the A/V cable UNCONNECTED. Once the console is properly connected to your television, please follow the diagram in the X ROCKER illustrated Set-up guide to connect the gaming console to the X ROCKER.

If your gaming console was shipped with a coaxial cable, instead of an A/V RCA cable, you must follow an alternate set-up procedure (coaxial cable is the same type of cable that is used to connect a VCR to a TV). You will quickly recognize if your gaming console uses this type of cable. It connects the gaming console directly to the television and carries both the audio and video signal over a single cable. If your gaming console uses a coaxial cable, you CAN NOT connect it directly to the X ROCKER. Instead, you have two alternatives:

1. Use an intermediary A/V device (such as a TV, VCR, DVD, TiVO™, etc)
 - a. Connect your gaming console to the intermediary A/V device via the coaxial cable.
 - b. Connect the X rocker to the 'Audio Out' jack on the intermediary A/V device. This allows an indirect connection of the X ROCKER to your gaming console, through the intermediary A/V device. To accomplish this successfully, your intermediary A/V device MUST have both:
 - I. A coaxial jack (the standard jack for TV cables that is found on most televisions and VCRs, DVDs, etc).
 - II. An RCA audio output jack ('Audio Out' jack).
 - c. Follow diagram 2 in the X ROCKER Set-up guide to connect the X ROCKER to the intermediary A/V device and finalize the setup*.
2. Purchase the A/V RCA cable for your console:

If your intermediary A/V device does not have an 'Audio Out' jack, you must contact the gaming console manufacturer/dealer and request the 'Audio/Video RCA output cable' for your console. Please note that Ace Bayou Service Center does not supply this cable for your console. You can obtain it only from the console manufacturer or an authorized dealer for your gaming console.

Unable to hear any sound from the X ROCKER -

1. Check that the power adapter is properly connected. When properly connected, the logo on the control panel should light up blue. If the logo does not light up, try to use another power outlet in your home. When you use a wireless mode, the power indicator light on the front panel of TX box will be tuned green. If the light is not on, please try to change batteries of TX.
 2. Make sure that the power unit is turned on. The "X rocker" logo power on indicator light on the control panel should be lit. If it is not, please press the power switch on the control panel. When you use a wireless mode, the power indicator light on the front panel of the TX box turns green. If the light is not on, please turn on the power switch on the sides of the TX box, meanwhile, check location which the band of the TX box is the same band as that of RX in X ROCKER, and check whether they are at conformed positions identical 1 to 1, 2 to 2, 3 to 3.
 3. Once you have successfully completed #1 and #2, please review the X ROCKER illustrated set-up guide and make sure your audio connections are properly made. If the audio connections are made properly, please check that the volume on the hand remote is tuned on to an audible level.
 4. If you have successfully completed #1-#3, you can't hear any sound still, try to connect another audio source that works well, such as a CD player, a television, a VCR, another game console, etc.
- Please be sure to go through steps 1 through 3 successfully. If you fail to hear any sound after having completed steps #1-#4, please contact Ace Bayou Service Center toll free (800) 242-5355, service@acebayou.com and request assistance.

Please go to www.thexrocker.com for answers to frequently asked questions.