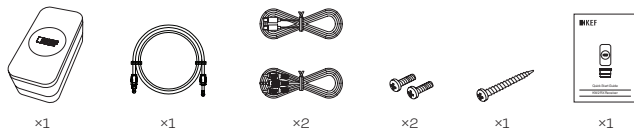


Quick Start Guide | 快速使用指南 | Quick Start Guide
| Quick Start Guide | Quick Start Guide | Quick Start
Guide | Quick Start Guide | Quick Start Guide

KW2 RX Receiver

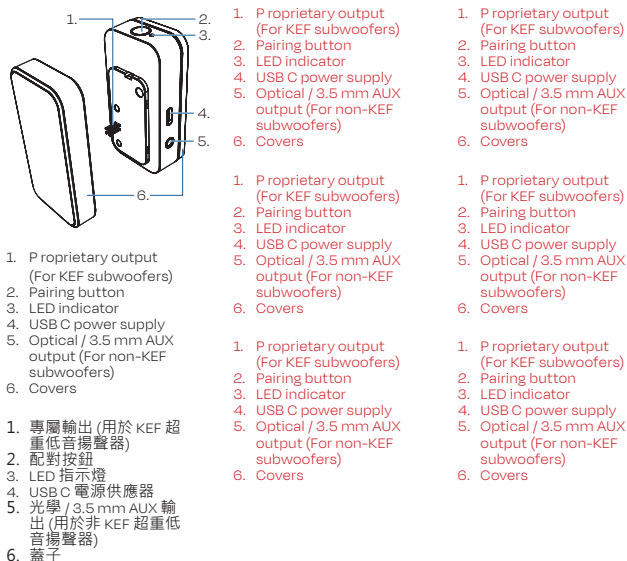
In the Box

包裝清單 | In the Box | In the Box | In the Box | In the Box | In the Box | In the Box



Controls and Connections

控制和接口 | Controls and Connections | Controls and Connections | Controls and Connections | Controls and Connections | Controls and Connections | Controls and Connections



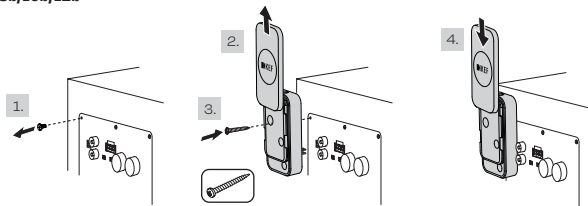
Connecting KEF Subwoofers

連接 KEF 重低音喇叭 | [Connecting KEF Subwoofers](#) | [Connecting KEF Subwoofers](#) | [Connecting KEF Subwoofers](#) | [Connecting KEF Subwoofers](#) | [Connecting KEF Subwoofers](#) | [Connecting KEF Subwoofers](#)

KC92/KC62/Kube MIE/KF92

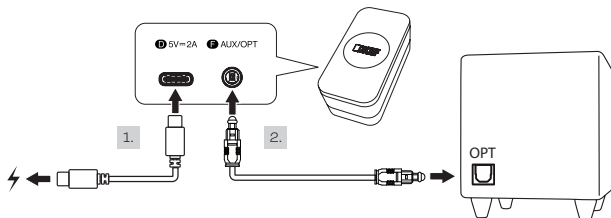


Kube 8b/10b/12b



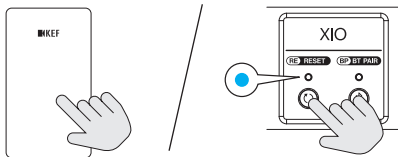
Connecting non-KEF Subwoofers

連接非 KEF 重低音喇叭 | [Connecting non-KEF Subwoofers](#) | [Connecting non-KEF Subwoofers](#) | [Connecting non-KEF Subwoofers](#) | [Connecting non-KEF Subwoofers](#) | [Connecting non-KEF Subwoofers](#) | [Connecting non-KEF Subwoofers](#)



Setting Up (1)

設定 | [Setting up](#) | [Setting up](#) | [Setting up](#) | [Setting up](#) | [Setting up](#) | [Setting up](#)



1. Setting up on the Soundbar

- Press the subwoofer pairing button on the KEF Connect App.
- Alternatively, press and hold the reset (RE) button on the back panel of the subwoofer until the LED indicator blinks cyan slowly.

The soundbar starts searching for the KW2 RX Receiver.

1. 在音箱上進行設定

- 按下 KEF Connect App 上的重低音喇叭配對按鈕。
- 或者，按住音箱背板上的重置(RE)按鈕，直到 LED 指示燈緩慢閃爍青色。

音箱開始搜尋 KW2 RX 接收器。

1. Setting up on the Soundbar

- Press the subwoofer pairing button on the KEF Connect App.
- Alternatively, press and hold the reset (RE) button on the back panel of the subwoofer until the LED indicator blinks cyan slowly.

The soundbar starts searching for the KW2 RX Receiver.

1. Setting up on the Soundbar

- Press the subwoofer pairing button on the KEF Connect App.
- Alternatively, press and hold the reset (RE) button on the back panel of the subwoofer until the LED indicator blinks cyan slowly.

The soundbar starts searching for the KW2 RX Receiver.

1. Setting up on the Soundbar

- Press the subwoofer pairing button on the KEF Connect App.
- Alternatively, press and hold the reset (RE) button on the back panel of the subwoofer until the LED indicator blinks cyan slowly.

The soundbar starts searching for the KW2 RX Receiver.

1. Setting up on the Soundbar

- Press the subwoofer pairing button on the KEF Connect App.
- Alternatively, press and hold the reset (RE) button on the back panel of the subwoofer until the LED indicator blinks cyan slowly.

The soundbar starts searching for the KW2 RX Receiver.

1. Setting up on the Soundbar

- Press the subwoofer pairing button on the KEF Connect App.
- Alternatively, press and hold the reset (RE) button on the back panel of the subwoofer until the LED indicator blinks cyan slowly.

The soundbar starts searching for the KW2 RX Receiver.

1. Setting up on the Soundbar

- Press the subwoofer pairing button on the KEF Connect App.
- Alternatively, press and hold the reset (RE) button on the back panel of the subwoofer until the LED indicator blinks cyan slowly.

The soundbar starts searching for the KW2 RX Receiver.

Setting Up (2)

設定 | [Setting up](#) | [Setting up](#) | [Setting up](#) | [Setting up](#) | [Setting up](#) | [Setting up](#)



2. Setting up on the KW2 RX Receiver

- Press and hold the pairing button on the receiver until the LED indicator blinks cyan slowly.

The receiver starts searching for the soundbar.

The soundbar and receiver are connected when both LED indicators in steps 1 and 2 illuminate cyan continuously.

2. 在 KW2 RX 接收器上進行設定

- 按住接收器上的配對按鈕，直到 LED 指示燈緩慢閃爍青色。

接收器開始搜尋音箱。

當步驟 1 和 2 中的 LED 指示燈持續亮起青色時，即表示音箱和接收器已連接。

2. Setting up on the KW2 RX Receiver

- Press and hold the pairing button on the receiver until the LED indicator blinks cyan slowly.

The receiver starts searching for the soundbar.

The soundbar and receiver are connected when both LED indicators in steps 1 and 2 illuminate cyan continuously.

2. Setting up on the KW2 RX Receiver

- Press and hold the pairing button on the receiver until the LED indicator blinks cyan slowly.

The receiver starts searching for the soundbar.

The soundbar and receiver are connected when both LED indicators in steps 1 and 2 illuminate cyan continuously.

2. Setting up on the KW2 RX Receiver

- Press and hold the pairing button on the receiver until the LED indicator blinks cyan slowly.

The receiver starts searching for the soundbar.

The soundbar and receiver are connected when both LED indicators in steps 1 and 2 illuminate cyan continuously.

2. Setting up on the KW2 RX Receiver

- Press and hold the pairing button on the receiver until the LED indicator blinks cyan slowly.

The receiver starts searching for the soundbar.

The soundbar and receiver are connected when both LED indicators in steps 1 and 2 illuminate cyan continuously.

2. Setting up on the KW2 RX Receiver

- Press and hold the pairing button on the receiver until the LED indicator blinks cyan slowly.

The receiver starts searching for the soundbar.

The soundbar and receiver are connected when both LED indicators in steps 1 and 2 illuminate cyan continuously.

2. Setting up on the KW2 RX Receiver

- Press and hold the pairing button on the receiver until the LED indicator blinks cyan slowly.

The receiver starts searching for the soundbar.

The soundbar and receiver are connected when both LED indicators in steps 1 and 2 illuminate cyan continuously.

Connecting Multiple KW2 RX Receivers

[連接多部 KW2 RX 接收器](#) | [Connecting Multiple KW2 RX Receivers](#) | [Connecting Multiple KW2 RX Receivers](#) | [Connecting Multiple KW2 RX Receivers](#) | [Connecting Multiple KW2 RX Receivers](#) | [Connecting Multiple KW2 RX Receivers](#)

- After successfully connected a receiver with the soundbar, repeat the steps in the "Setup" section to connect another receiver.
- 成功將一個接收器與音箱連接後，重複「設定」部分的步驟來連接另一個接收器。
- After successfully connected a receiver with the soundbar, repeat the steps in the "Setup" section to connect another receiver.
- After successfully connected a receiver with the soundbar, repeat the steps in the "Setup" section to connect another receiver.
- After successfully connected a receiver with the soundbar, repeat the steps in the "Setup" section to connect another receiver.
- After successfully connected a receiver with the soundbar, repeat the steps in the "Setup" section to connect another receiver.

Firmware Update

[韌體更新](#) | [Firmware Update](#) | [Firmware Update](#) | [Firmware Update](#) | [Firmware Update](#) | [Firmware Update](#) | [Firmware Update](#)

- Press the "Firmware Upgrade" button on the KEF Connect App to start the firmware update. The LED indicator on the receiver blinks white and cyan slowly during the update.
- 按下 KEF Connect App 上的「韌體更新」按鈕開始韌體更新。在更新過程中，接收器上的 LED 指示燈會緩慢閃爍白色和青色。
- Press the "Firmware Upgrade" button on the KEF Connect App to start the firmware update. The LED indicator on the receiver blinks white and cyan slowly during the update.
- Press the "Firmware Upgrade" button on the KEF Connect App to start the firmware update. The LED indicator on the receiver blinks white and cyan slowly during the update.
- Press the "Firmware Upgrade" button on the KEF Connect App to start the firmware update. The LED indicator on the receiver blinks white and cyan slowly during the update.
- Press the "Firmware Upgrade" button on the KEF Connect App to start the firmware update. The LED indicator on the receiver blinks white and cyan slowly during the update.