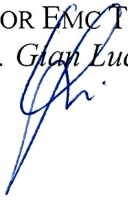





CE MARKING

*ELECTROMAGNETIC COMPATIBILITY
ELECTRICAL SAFETY
LASER SPECTROSCOPY
ENVIRONMENTAL PHYSICS*

G.S.D. S.r.l.
Certified in accordance with
UNI EN ISO 9001:2008
by
TÜV Rheinland Italia S.r.l.
Certificate N. 39 00 1850509

G.S.D. Srl PISA - Italy	Test Report n. FCC-16601	Rev. 03
Manufacturer	CAEN RFID s.r.l.	
Address	Via Vetraia, 11 55049 Viareggio (LU) Italy	
Test Family Name	R1170IUNF	
Testing Laboratory Name	G.S.D. S.r.l.	
Address	Via Marmiceto, 8 56121 Ospedaletto Pisa (PI) Italy	
Tel/Fax	+39 050 984254 / +39 050 984262	
P.IVA/VAT	01343950505	
http – e-mail	www.gsd.it - info@gsd.it	
FCC Listed. Registration Number: 424037.		
Location and Date of Issue	Pisa, 2016 July 08	
<div style="text-align: center;">G.S.D. s.r.l. Via Marmiceto, 8 56121 OSPEDALETTO - PISA Tel. 050.984254 - Fax 050.984262 P. IVA 01343950505</div> <div style="display: flex; justify-content: space-between;"><div style="text-align: center;"><p>SENIOR EMC TEST MANAGER <i>Dr. Gian Luca Genovesi</i></p></div><div style="text-align: center;"><p>QUALITY MANAGER <i>Dr. David Pelliccia</i></p></div></div>		

INDEX

1. MANUFACTURER AND EUT IDENTIFICATION	3
2. REFERENCE STANDARDS.....	5
3. RESULT, CONDITION, MEASUREMENT UNCERTAINTY.....	6
4. RADIATED EMISSIONS.....	8
5. POWER LINES CONDUCTED EMISSIONS.....	19
6. OPERATION WITHIN THE BAND 902 - 928 MHz.....	24
6.1. NUMBER OF HOPPING CHANNEL.....	24
6.2. CARRIER FREQUENCY SEPARATION.....	25
6.3. TIME OF OCCUPANCY.....	28
6.4. 20 dB BANDWIDTH.....	35
6.5. PEAK OUTPUT POWER.....	42
6.6. BAND EDGE.....	49
7. RADIATED OPERATION WITHIN THE BAND 902 - 928 MHz.....	56
7.1. SPURIOUS RADIATED EMISSIONS	56
8. PHOTO.....	62

Report Revision History

Revision details

Date	Page No.(s)	Details
2016 June 10	65	Rev. 00 Initial issue
2016 June 24	65	Rev. 01 §6.5 Dated explanation for radiated power measurement
2016 July 01	65	Rev. 02 §6.5 Power calculation explanation
2016 July 01	65	Rev. 03 §6.5 Electric Field units changed in dBuV/m
2016 July 26	65	Rev. 03 §6.5 Detailed Calculation of erp

1. MANUFACTURER AND EUT IDENTIFICATION¹	
Manufacturer	CAEN RFID s.r.l..
Address	Via Vetraia, 11 55049 Viareggio (LU) Italy
Test Family Name	R1170IUNF
Date of reception	2016 April 21
Sampling	Laboratory sample for certification
Test Item Description	RFID Device
Nominal Input Voltage	5 Vdc (USB)
FCC ID	UVECAENRFID023

¹A detailed documentation is preserved in the internal fascicle.

This document may be only fully reproduced.

Every partial reproduction is only allowed after written approval released by G.S.D. S.r.l.

Report n. FCC-16601 Rev. 03, page 3 / 65



*Fig. 1.1
Equipment Photo*

2. REFERENCE STANDARDS

Tests and measurements are performed accordingly to the reference standards given in the table below:

<i>TEST</i>	<i>STANDARD</i>
Emissions: Conducted and Radiated – Section 15.207 and 15.209	<p>FCC Rules and Regulations, Title 47 Part 15 – Sub part C</p> <p>ANSI C63.4 2014 – American National Standard for Methods of Measuring of Radio-Noise Emissions from Low Voltage Electrical and Electronic Equipment in the Range of 9 kHz – 40 GHz</p> <p>ANSI C63.10 2013 – American National Standard of Procedures for Compliance Testing of Unlicensed Wireless Devices</p>
Operation within the band 902-928 MHz: Alternative Test Procedures 15.247 (b) and (c) , and (a) Bandwidth and average time of occupancy, Band Edge 15.247 (d)	<p>FCC Rules and Regulations, Title 47 Part 15 – Sub part C</p> <p>DA 00-705 (30 March 2000) – Filing and Measurement Guidelines for Frequency Hopping Spread Spectrum Systems</p> <p>ANSI C63.4 2014 – American National Standard for Methods of Measuring of Radio-Noise Emissions from Low Voltage Electrical and Electronic Equipment in the Range of 9 kHz – 40 GHz</p> <p>ANSI C63.10 2013 – American National Standard of Procedures for Compliance Testing of Unlicensed Wireless Devices</p> <p>412172 D01 Determining ERP and EIRP v01r01 GUIDELINES FOR DETERMINING THE EFFECTIVE RADIATED POWER (ERP) AND EQUIVALENT ISOTROPICALLY RADIATED POWER (EIRP) OF AN RF TRANSMITTING SYSTEM</p>

This document may be only fully reproduced.

Every partial reproduction is only allowed after written approval released by G.S.D. S.r.l.

Report n. FCC-16601 Rev. 03, page 5 / 65

3. RESULT, CONDITION, MEASUREMENT UNCERTAINTYSummary of Test Results

<i>TEST</i>	<i>RESULT</i>
Emissions: conducted Section 15.207	Pass
Emissions: radiated Section 15.209	Pass
Bandwidth and Average Time of Occupancy Section 15.247 (a)	Pass
Operation within the band 902-928 MHz: Section 15.247 (b) and (c)	Pass
Band Edge Section 15.247 (d)	Pass

Measurement uncertainty

<i>TEST</i>	<i>EXPANDED UNCERTAINTY</i>
Conducted Emission – 50Ω/50μH (150 kHz - 30 MHz)	± 3.5 dB
Radiated Emission – (Semianechoic Room) (30 MHz - 18 GHz)	± 4.7 dB

Climatic Conditions

<i>PARAMETER</i>	<i>VALUE</i>
Temperature	(293 ± 3) K
Relative humidity	(50 ± 5) %

Extensions

The results refer only to the sampled EUT and under the specified conditions.

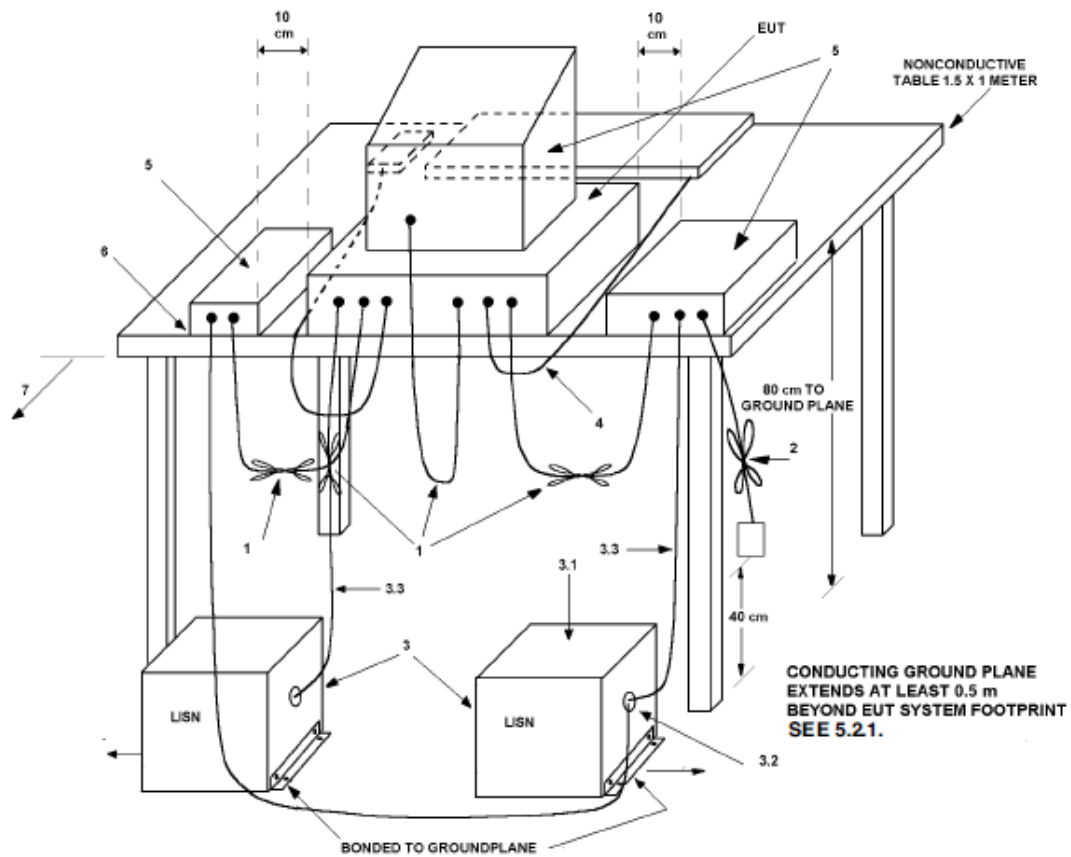
Modulations:

Type: PR ASK 40 kHz

This document may be only fully reproduced.

Every partial reproduction is only allowed after written approval released by G.S.D. S.r.l.

Report n. FCC-16601 Rev. 03, page 6 / 65



Conducted and Radiated EUT Test Set-up example (ANSI C63.10 2013)

4. RADIATED EMISSIONS

In the following table you can find the limits established by the reference standard:

FREQUENCY RANGE (MHz)	<i>Field Strength</i> <i>QUASI-PEAK LIMITS</i> <i>[dB (μV/m)]</i>
0.009 – 0.490	48.15 – 13.8 @ 300m
0.490 – 1.705	33.8 – 23 @ 30m
1.705 – 30	29.5 @ 30m
30 – 88	40
88 – 216	43,5
216 – 960	46
Above 960	54

Test Equipment

EQUIPMENT	MANUFACTURER	MODEL	CAL. DUE
MXE EMI Receiver	Agilent/Keysight	N9038A	01/2017
Anechoic Chamber	Comtest	CSA01	01/2017
Bilog Antenna	Schaffner	CBL6112B	01/2017
Horn Antenna	EMCO	3115	01/2017
Horn Antenna	Alpha Industries	61932500	01/2017
Controller	Deisel	HD100	01/2017
Turn Table	Deisel	MA240	01/2017
LISN	GSD	NTW06	01/2017

Test procedure: RE22R02**Notes**

Azimuth position EUT-Antenna corresponding to 0° identifies the rotating table orientation (TT) in which the instrument to be tested shows the front part turned towards the antenna. Positive grades individuate clockwise rotations of TT when this one is observed from the top. For negative degrees, TT rotation is counter-clockwise.

Antenna height respect to the mass plane is conventionally individuated with: MA=XXX where XXX indicates the height (always positive and greater than 100) expressed in cm.

Antenna horizontal polarisation is indicated by POL=H.

Antenna vertical polarisation is indicated by POL=V.

EUT was tested in the three orthogonal planes.

Results and conclusions

In all the operative conditions, equipment complied with the standard limits. Graphics in following figures show the most significant registrations of the performed measurements.

This document may be only fully reproduced.

Every partial reproduction is only allowed after written approval released by G.S.D. S.r.l.

Report n. FCC-16601 Rev. 03, page 8 / 65

Job Number FCC-16601
 Test Name Radiated Emissions
 EUT Name CAEN RFID s.r.l. - R1170IUNF

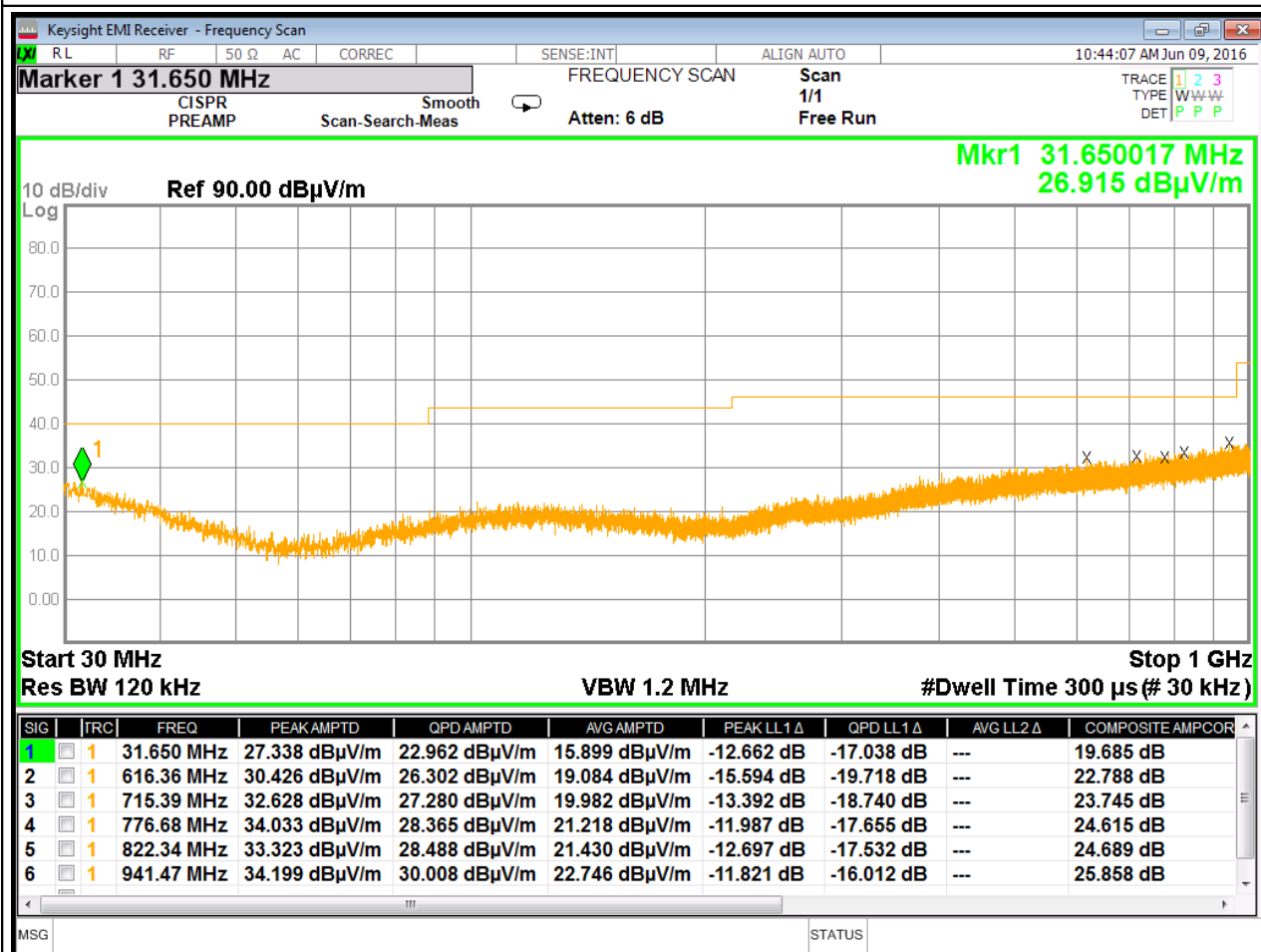


Fig. 4.1

POL V
 MA: 100 cm
 TT: 0°
 EUT mode: Standby

*Record of the measurement of radiated emissions (PK)
 Maximum disturbance determined in the frequency range 30 – 1000 MHz, Pol. V.*

Job Number FCC-16601
 Test Name Radiated Emissions
 EUT Name CAEN RFID s.r.l. - R1170IUNF

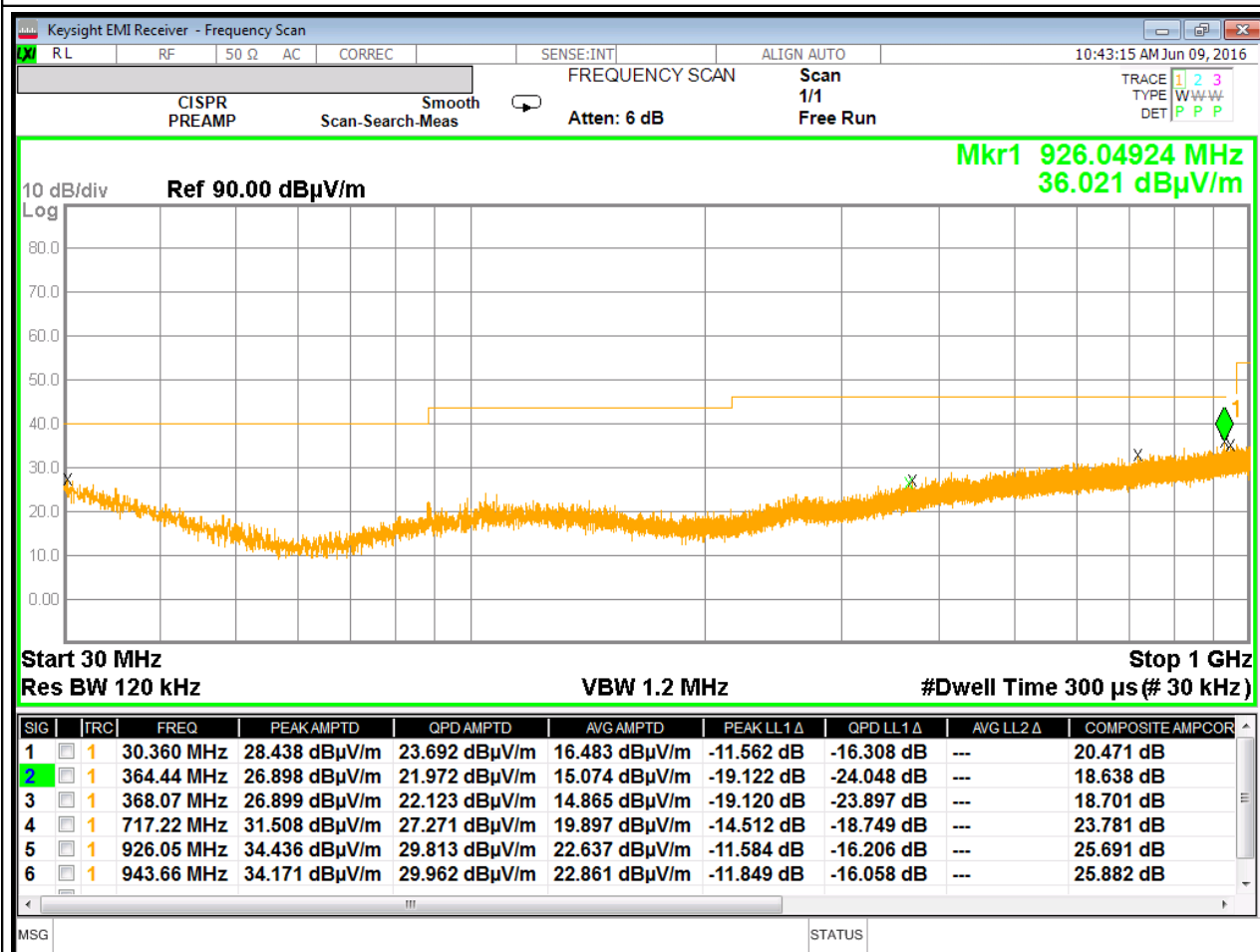


Fig. 4.2

POL H
 MA: 100 cm
 TT: 0°
 EUT mode: Standby

*Record of the measurement of radiated emissions (PK)
 Maximum disturbance determined in the frequency range 30 – 1000 MHz, Pol. H.*

Job Number FCC-16601
 Test Name Radiated Emissions
 EUT Name CAEN RFID s.r.l. - R1170IUNF

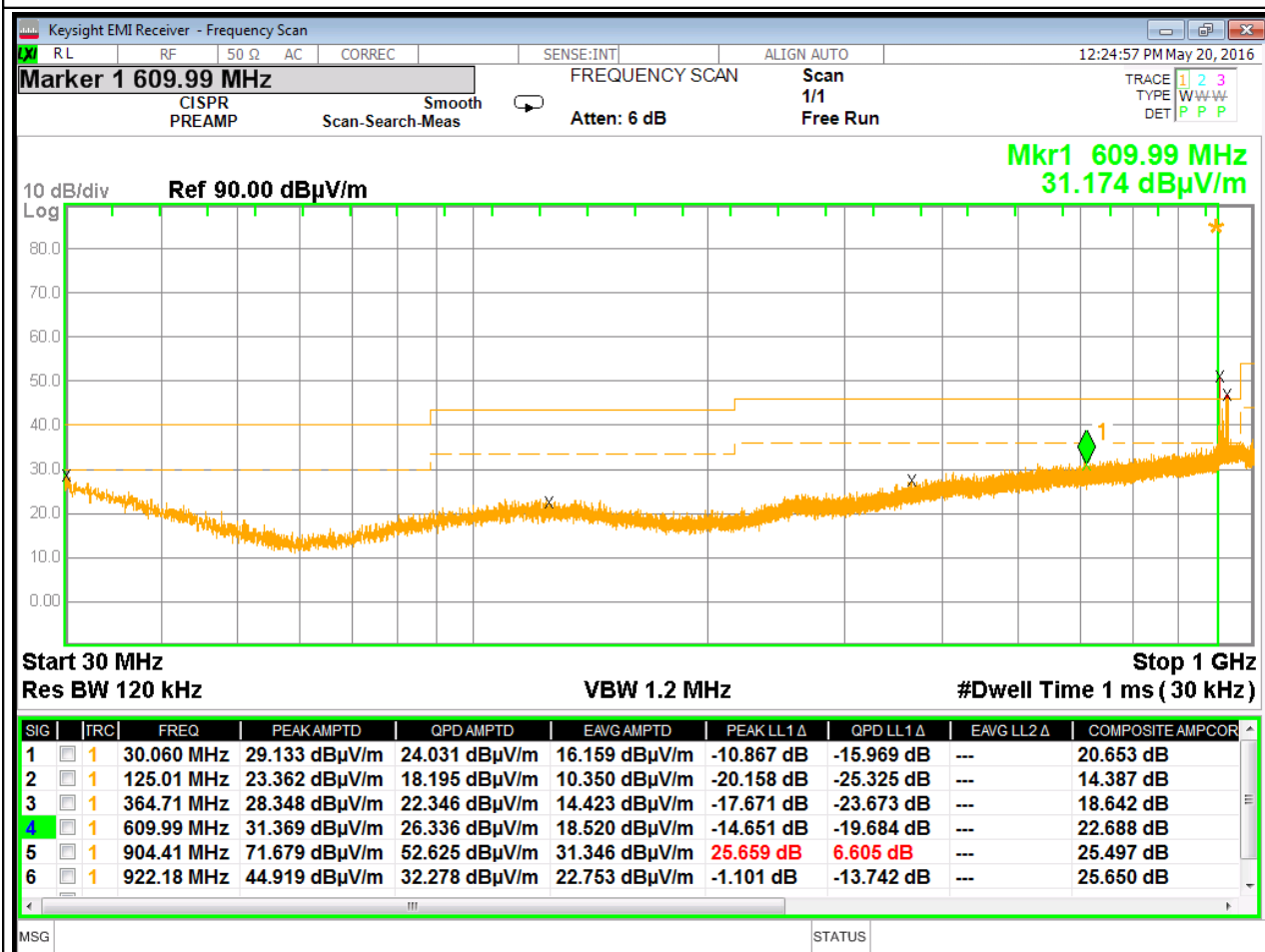


Fig. 4.3

POL V
 MA: 100 cm
 TT: 0°
 EUT mode: Modulation

*Record of the measurement of radiated emissions (PK)
 Maximum disturbance determined in the frequency range 30 – 1000 MHz, Pol. V.*

Job Number FCC-16601
 Test Name Radiated Emissions
 EUT Name CAEN RFID s.r.l. - R1170IUNF

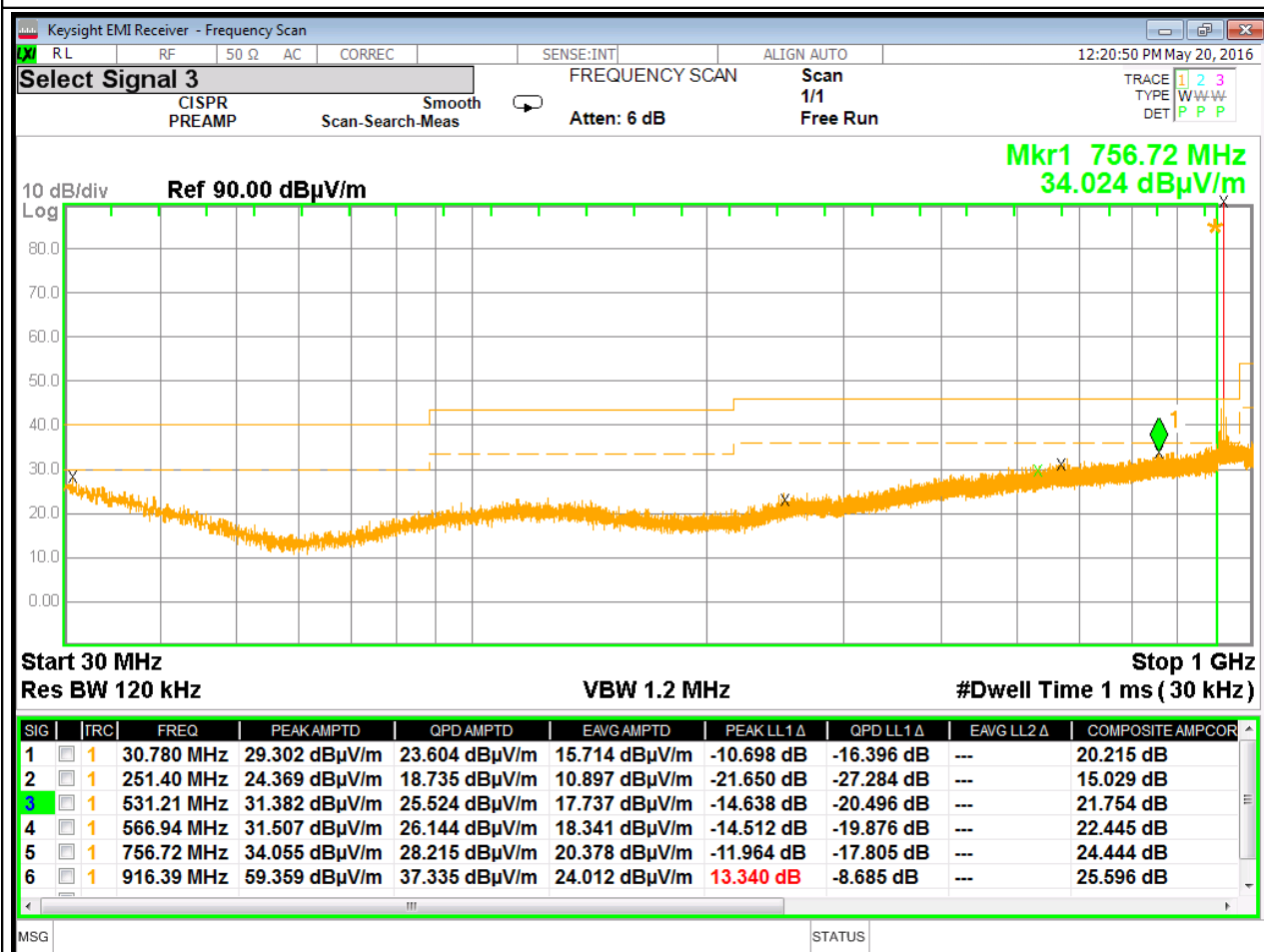


Fig. 4.4

POL H
 MA: 100 cm
 TT: 0°
 EUT mode: Modulation

*Record of the measurement of radiated emissions (PK)
 Maximum disturbance determined in the frequency range 30 – 1000 MHz, Pol. H.*

Job Number FCC-16601
 Test Name Radiated Emissions
 EUT Name CAEN RFID s.r.l. - R1170IUNF

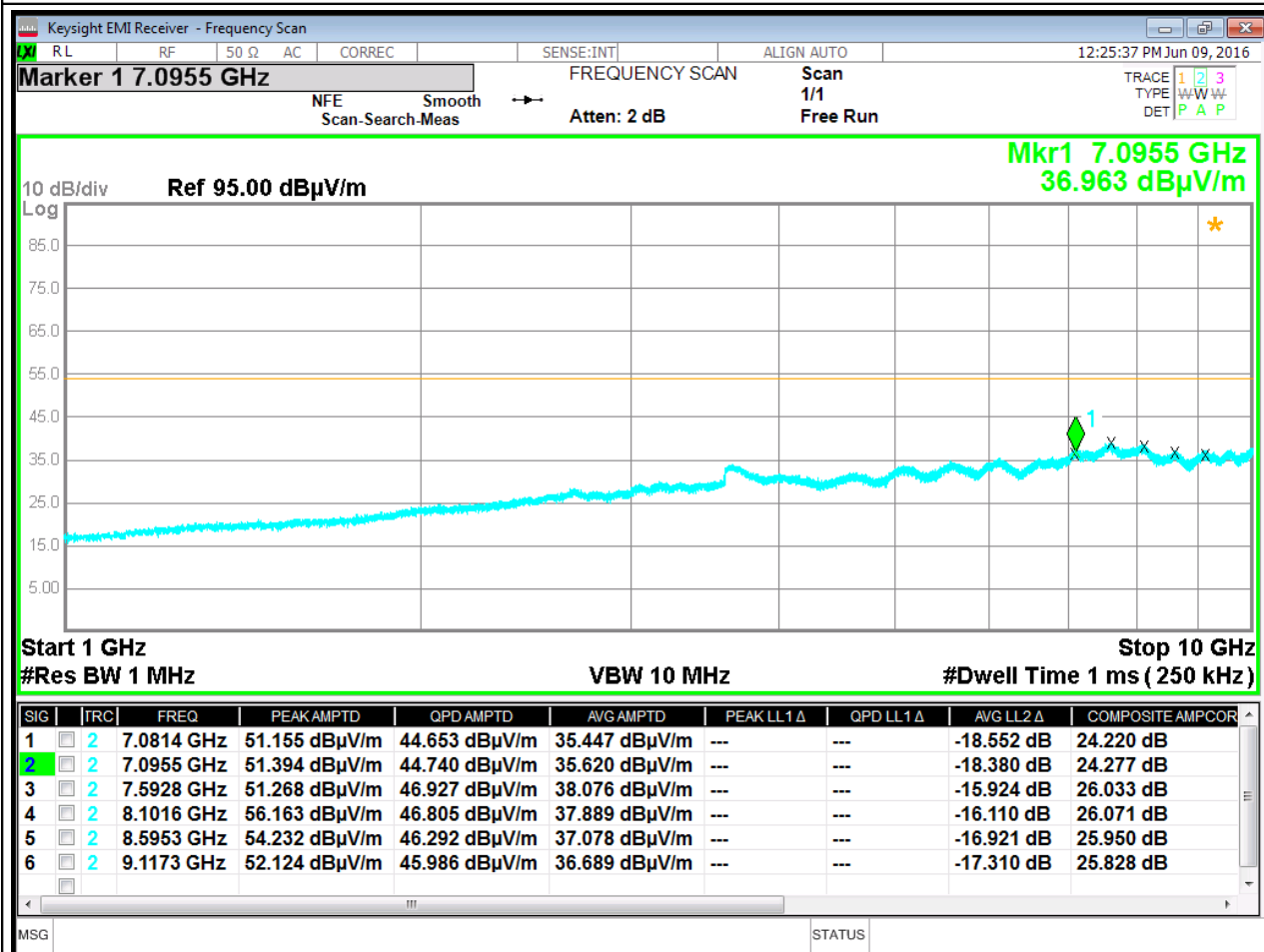


Fig. 4.5

POL V
 MA: 100 cm
 TT: 0°
 EUT mode: Modulation

*Record of the measurement of radiated emissions (AVG detector)
 Maximum disturbance determined in the frequency range 1 – 10 GHz, Pol. V.*

Job Number FCC-16601
 Test Name Radiated Emissions
 EUT Name CAEN RFID s.r.l. - R1170IUNF

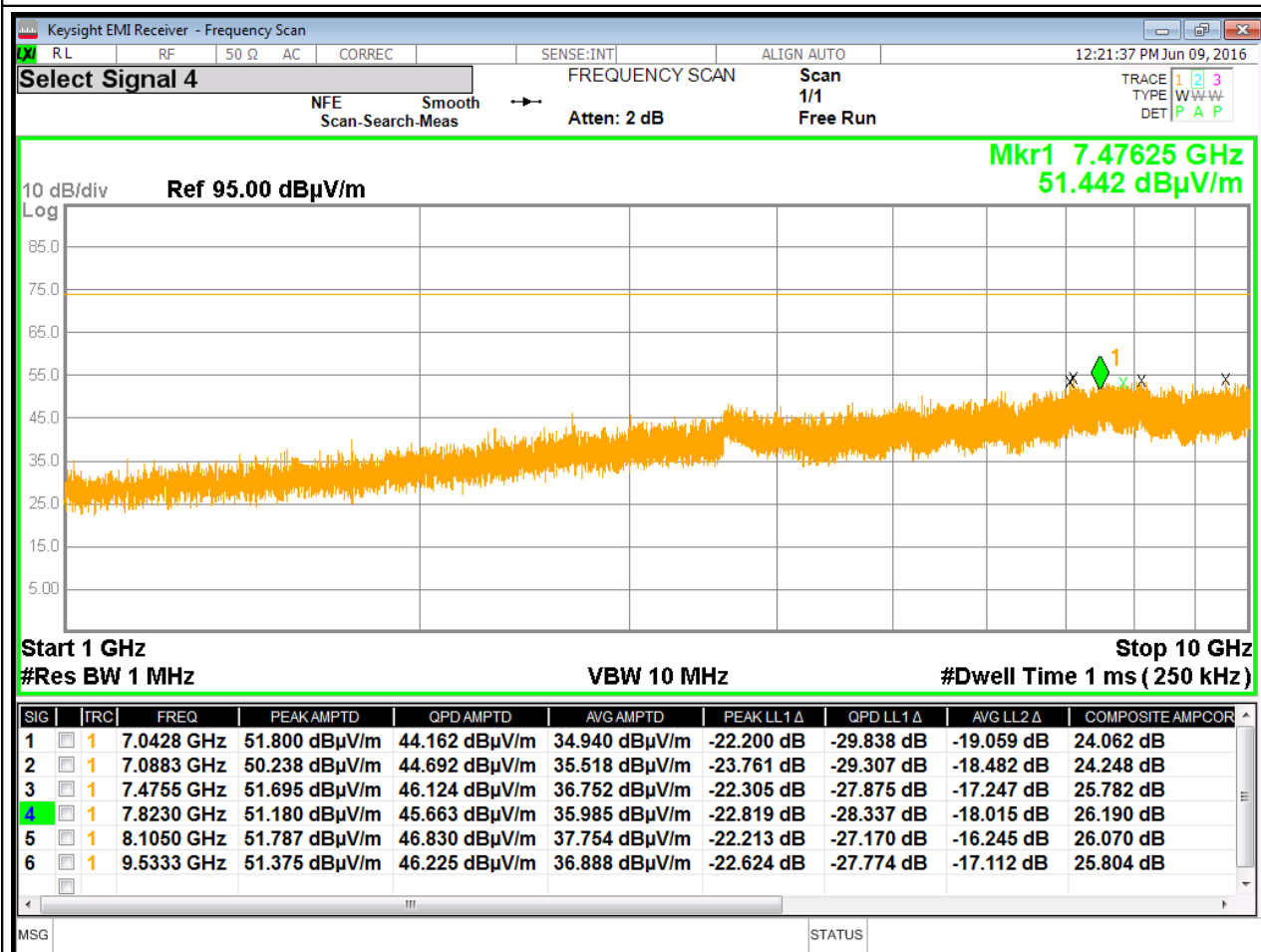


Fig. 4.6

POL V
 MA: 100 cm
 TT: 0°
 EUT mode: Modulation

Record of the measurement of radiated emissions (Peak detector)
 Maximum disturbance determined in the frequency range 1 – 10 GHz, Pol. V.

Job Number FCC-16601
 Test Name Radiated Emissions
 EUT Name CAEN RFID s.r.l. - R1170IUNF

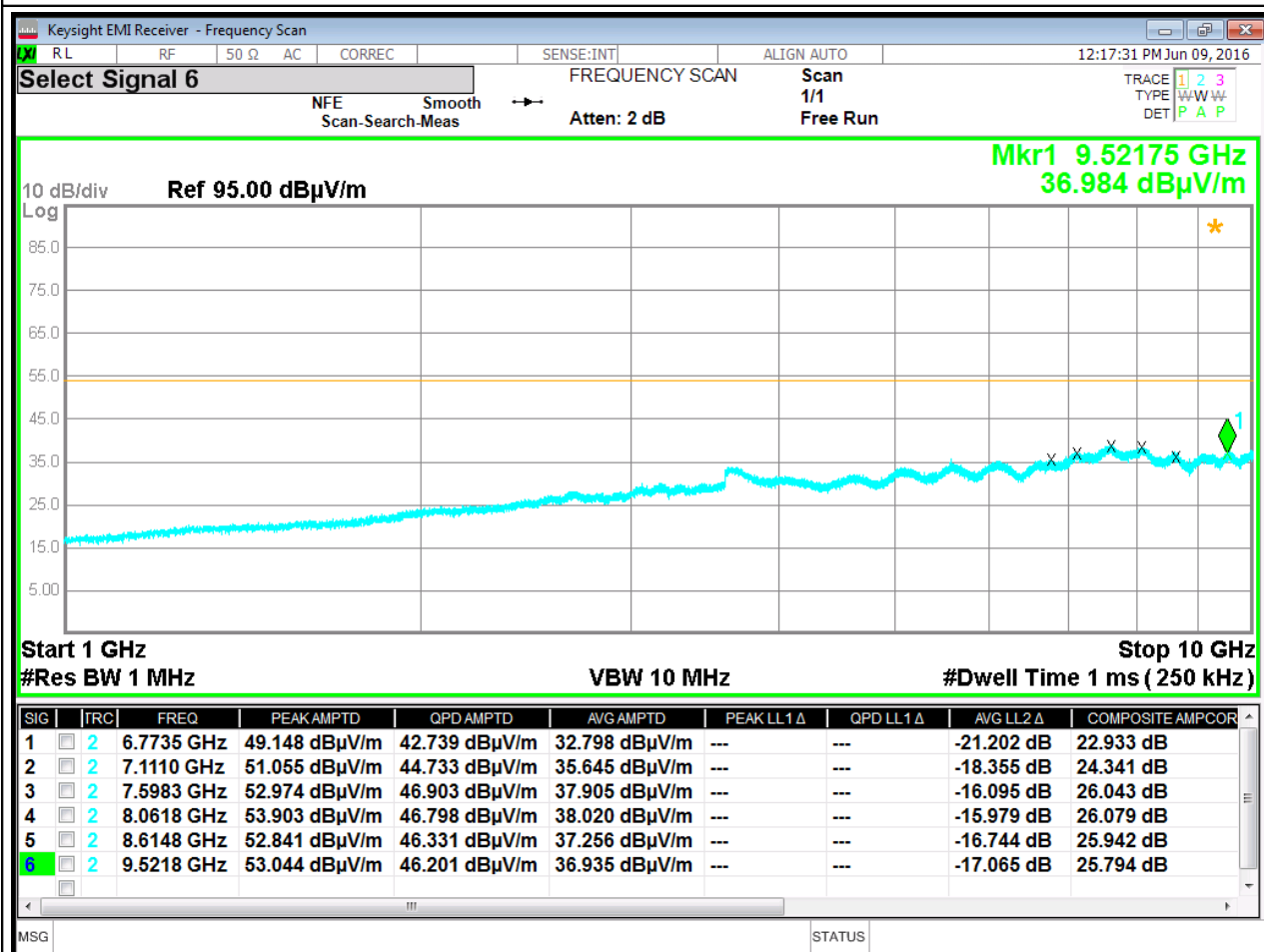


Fig. 4.7

POL H
 MA: 100 cm
 TT: 0°
 EUT mode: Modulation

*Record of the measurement of radiated emissions (AVG detector)
 Maximum disturbance determined in the frequency range 1 – 10 GHz, Pol. H.*

Job Number FCC-16601
 Test Name Radiated Emissions
 EUT Name CAEN RFID s.r.l. - R1170IUNF

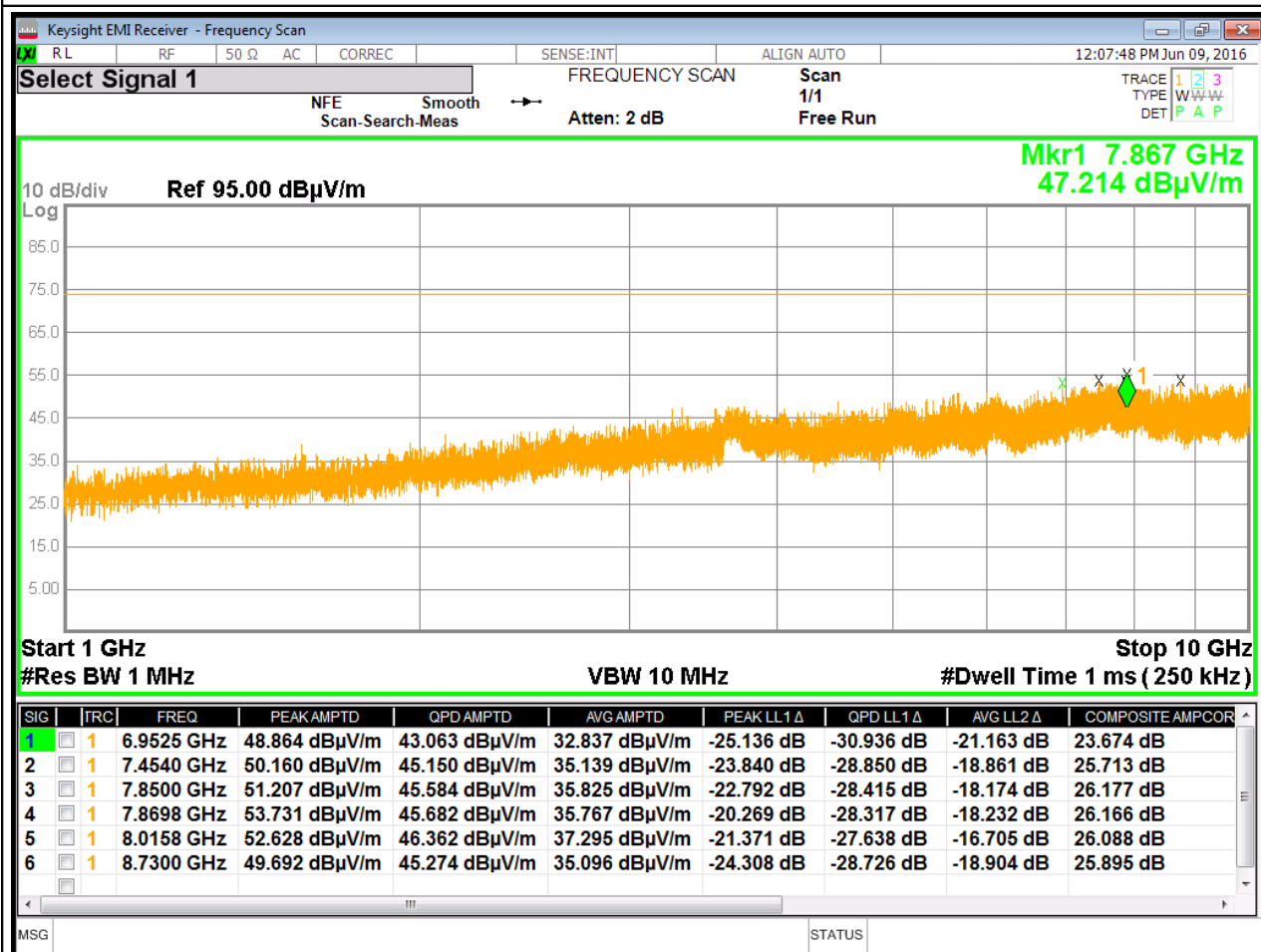


Fig. 4.8

POL H
 MA: 100 cm
 TT: 0°
 EUT mode: Modulation

Record of the measurement of radiated emissions (Peak detector)
 Maximum disturbance determined in the frequency range 1 – 10 GHz, Pol. H.

Job Number FCC-16601
 Test Name Radiated Emissions
 EUT Name CAEN RFID s.r.l. - R1170IUNF

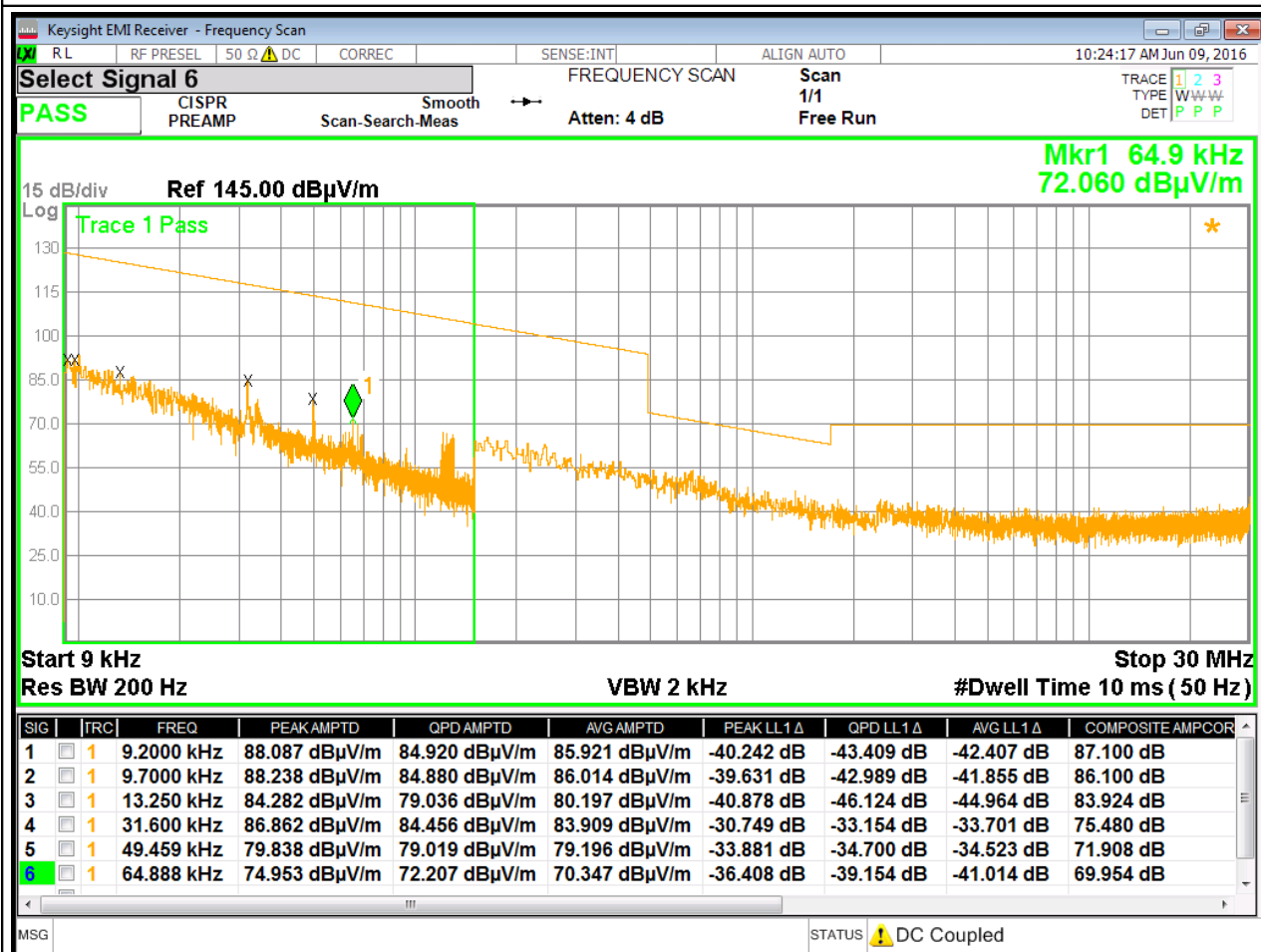


Fig. 4.9

POL Parallel
 MA: 150 cm
 TT: 0°
 EUT mode: Modulation

*Record of the measurement of radiated emissions (PK)
 Maximum disturbance determined in the frequency range 0.009 – 30 MHz, Pol. Parallel.*

Job Number FCC-16601
 Test Name Radiated Emissions
 EUT Name CAEN RFID s.r.l. - R1170IUNF

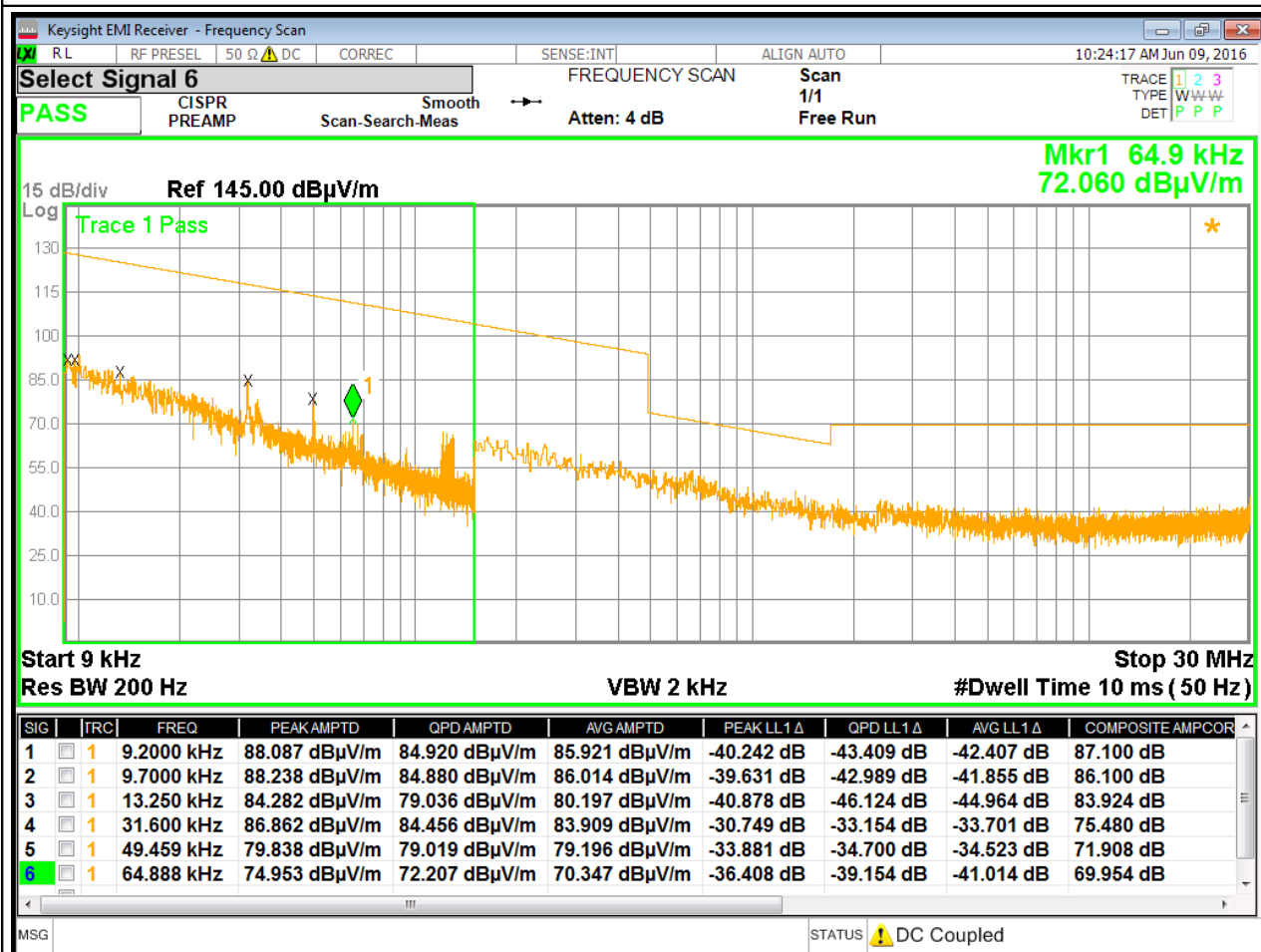


Fig. 4.10

POL Orthogonal
 MA: 150 cm
 TT: 0°
 EUT mode: Modulation

Record of the measurement of radiated emissions (PK)
Maximum disturbance determined in the frequency range 0.009 – 30 MHz, Pol. Orthogonal.

5. POWER LINES CONDUCTED EMISSIONS

Equipment shall meet the limits below when using a CISPR16 quasi-peak and average detector receivers.

FCC 15.207

FREQUENCY RANGE (MHz)	QUASI-PEAK LIMIT [dB (μV)]	AVERAGE LIMIT [dB (μV)]
0.15 – 0.50	66 – 56 ^(*)	56 – 46 ^(*)
0.50 – 5	56	46
5 – 30	60	50

^(*) Limit decreasing linearly with logarithm of frequency

Test Equipment

EQUIPMENT	MANUFACTURER	MODEL	CAL. DUE
MXE EMI Receiver	Agilent/Keysight	N9038A	01/2017
Screened Room	GSD	CSC01	01/2017
LISN	GSD	GSDA01	01/2017
LISN	COMTEST	---	01/2017

Test procedure: CE22R01

The EUT power cable was connected to a LISN and the monitored output of the LISN was connected to a spectrum analyzer by a transient limiter. The conducted emissions from 150 kHz to 30 MHz were monitored and compared to the specification limits

Test method

Test method was in accordance with the reference standard.

EUT modes of operations were tested in order to achieve the maximum level of emission.

Results

Equipment complied with the test specification limits.

Graphics in following figures show some registrations of the frequency spectrum of the conducted emissions.

This document may be only fully reproduced.

Every partial reproduction is only allowed after written approval released by G.S.D. S.r.l.

Report n. FCC-16601 Rev. 03, page 19 / 65

Job Number FCC-16601
 Test Name Power line Conducted Emissions
 FCC 15.207
 EUT Name R1170IUNF

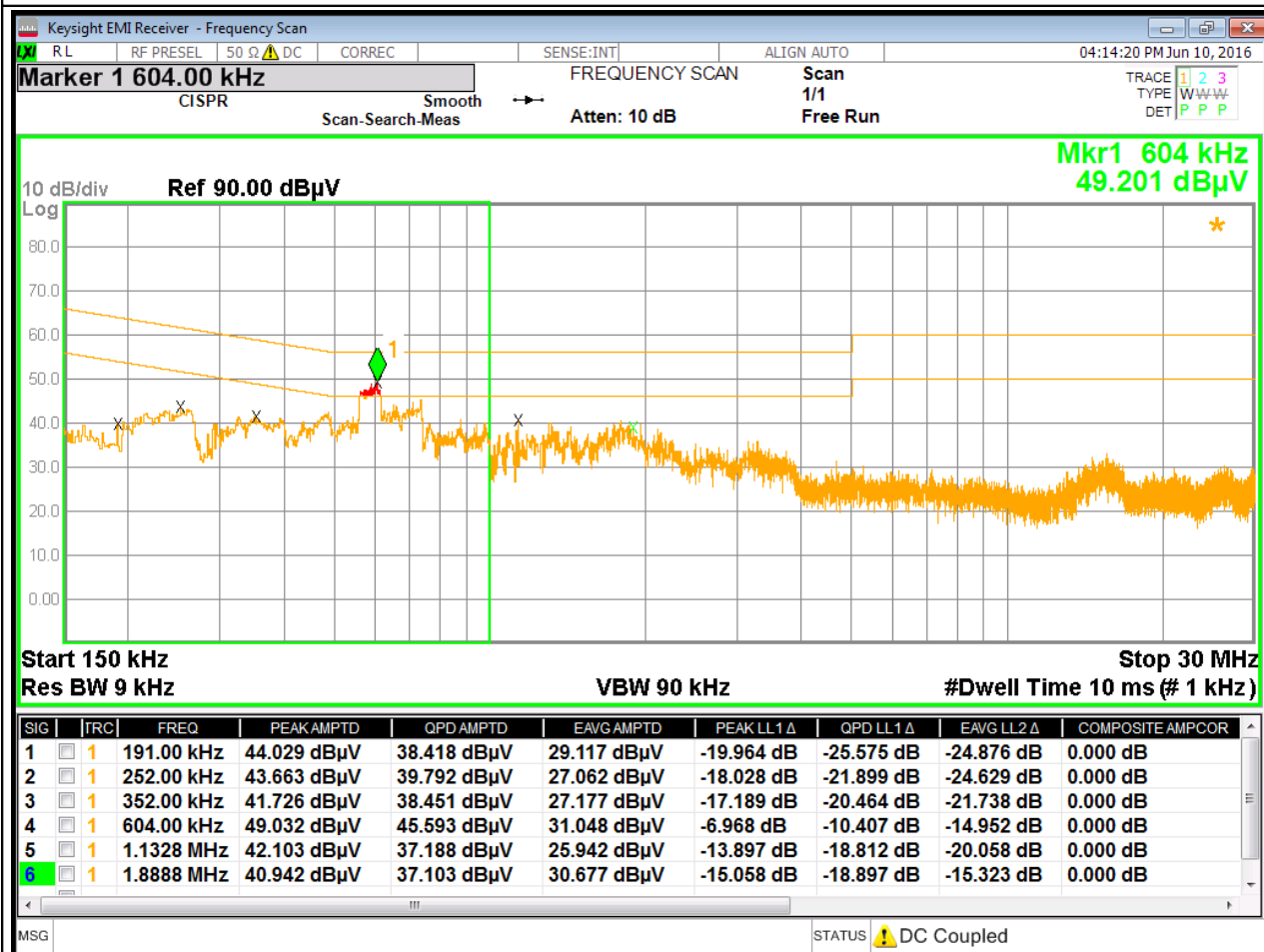


Fig. 5.1

Phase 1 of auxiliary apparatus (worst case)

EUT mode: disconnected

Auxiliary apparatus: Laptop whit power supply linked

B Band (0.15 – 30 MHz)

This document may be only fully reproduced.

Every partial reproduction is only allowed after written approval released by G.S.D. S.r.l.

Report n. FCC-16601 Rev. 03, page 20 / 65

Job Number FCC-16601
 Test Name Power line Conducted Emissions
 FCC 15.207
 EUT Name R1170IUNF

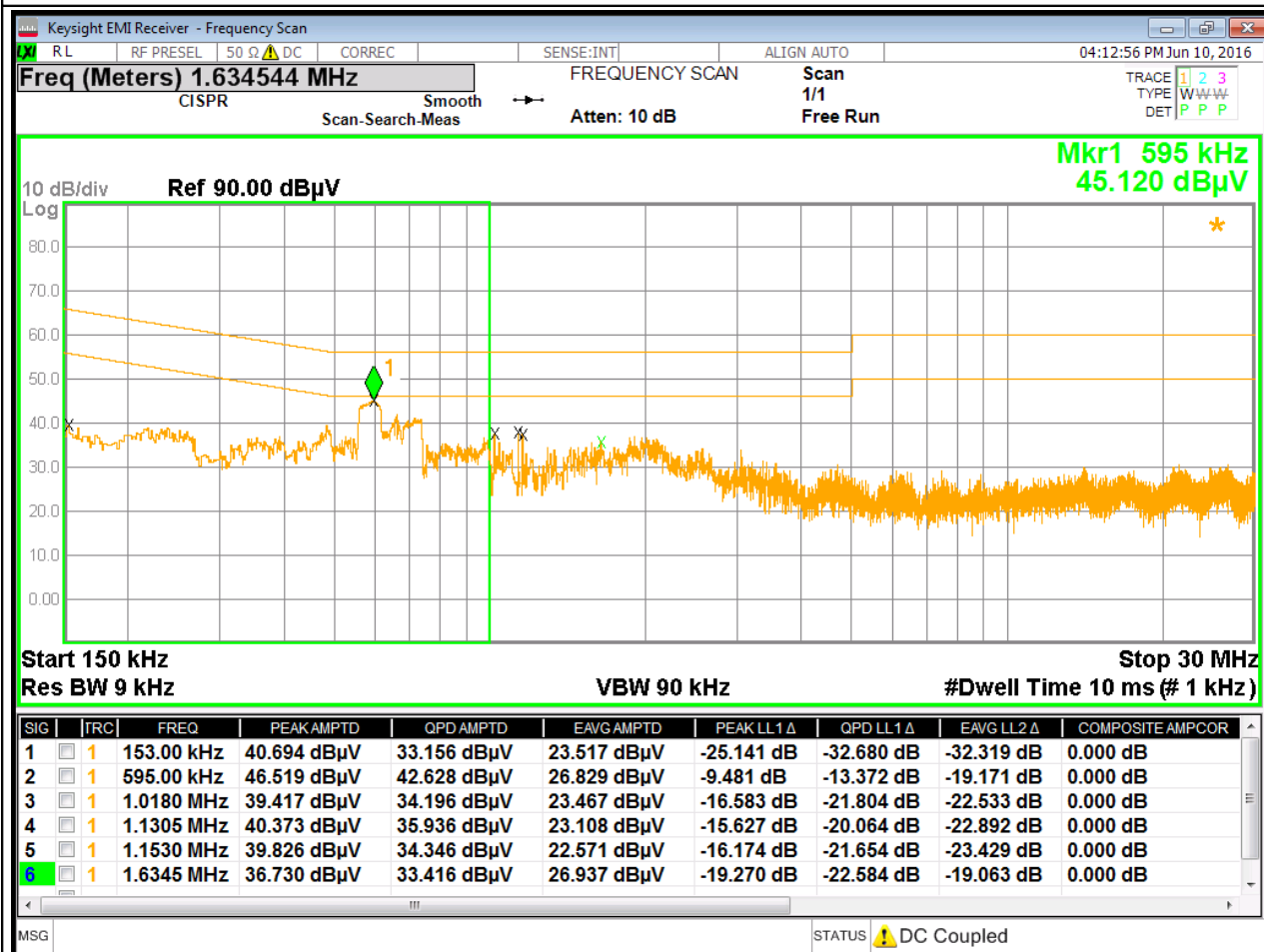


Fig. 5.2

Phase 2 of auxiliary apparatus (worst case)

EUT mode: disconnected

Auxiliary apparatus: Laptop whit power supply linked

B Band (0.15 – 30 MHz)

This document may be only fully reproduced.

Every partial reproduction is only allowed after written approval released by G.S.D. S.r.l.

Report n. FCC-16601 Rev. 03, page 21 / 65

Job Number FCC-16601
 Test Name Power line Conducted Emissions
 FCC 15.207
 EUT Name R1170IUNF

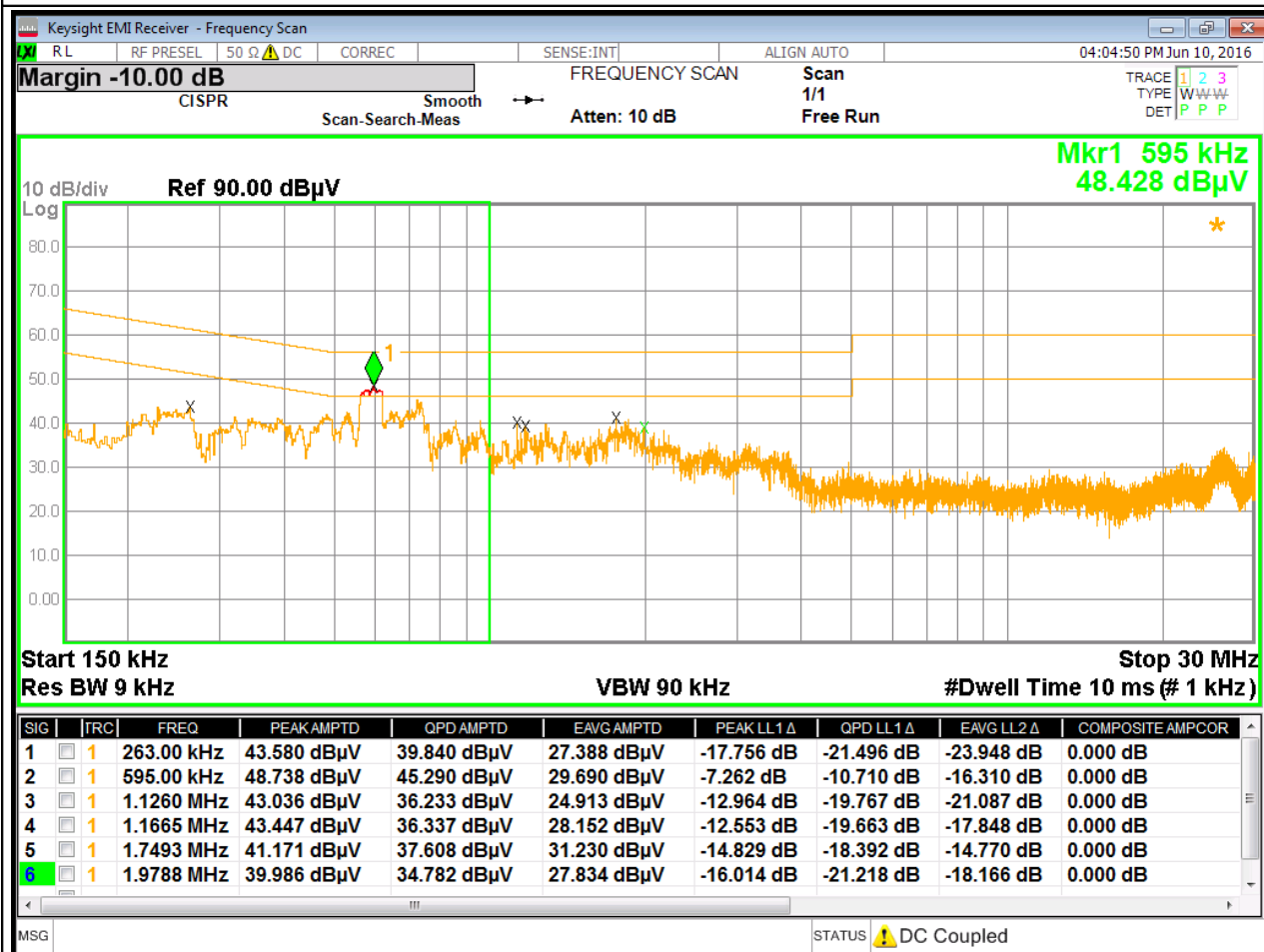


Fig. 5.3

Phase 1 of auxiliary apparatus (worst case)

EUT mode: Modulation

Auxiliary apparatus: Laptop whit power supply linked

B Band (0.15 – 30 MHz)

This document may be only fully reproduced.

Every partial reproduction is only allowed after written approval released by G.S.D. S.r.l.

Report n. FCC-16601 Rev. 03, page 22 / 65

Job Number FCC-16601
 Test Name Power line Conducted Emissions
 FCC 15.207
 EUT Name R1170IUNF

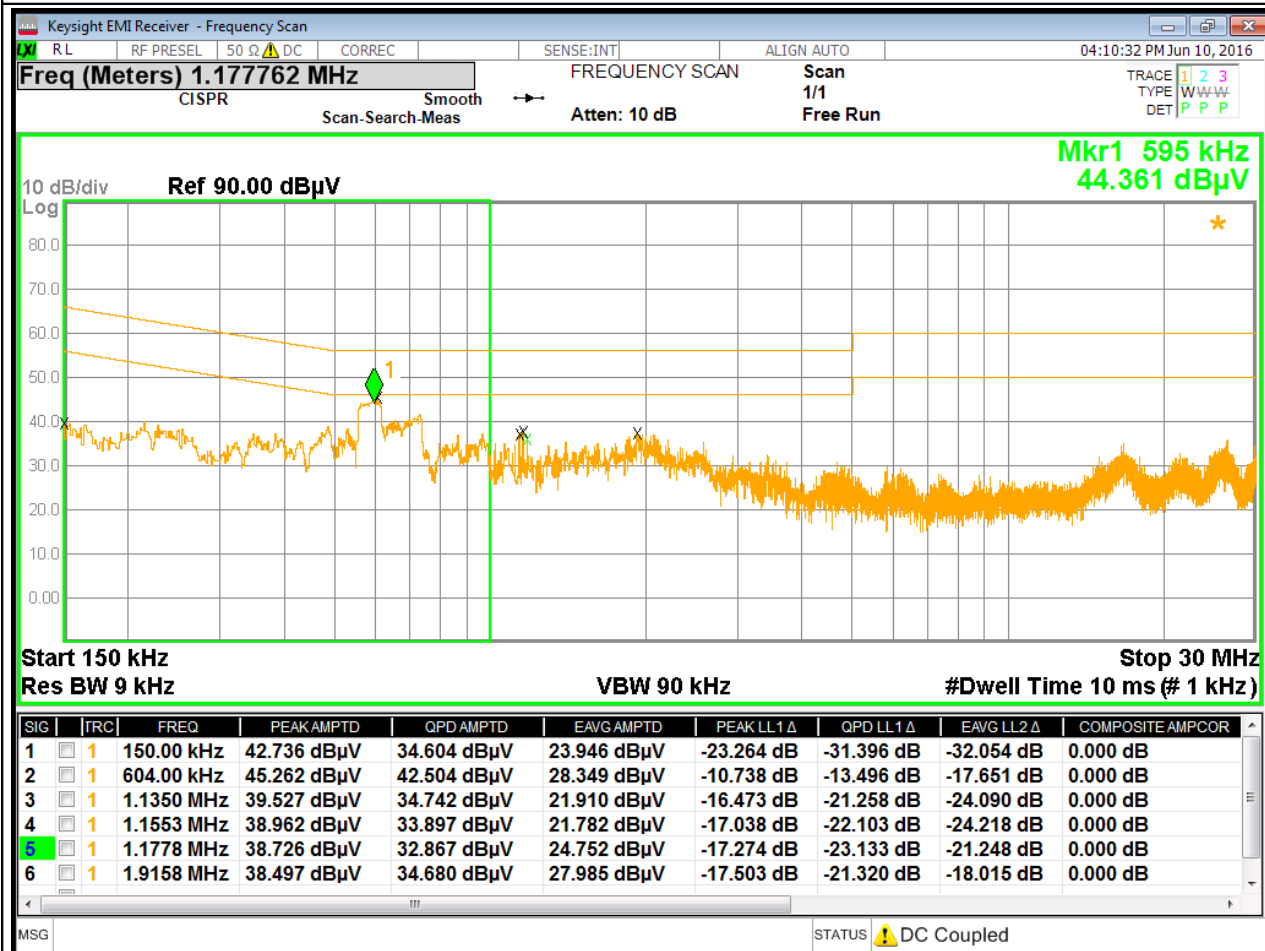


Fig. 5.4

Phase 2 of auxiliary apparatus (worst case)

EUT mode: Modulation

Auxiliary apparatus: Laptop whit power supply linked

B Band (0.15 – 30 MHz)

This document may be only fully reproduced.

Every partial reproduction is only allowed after written approval released by G.S.D. S.r.l.

Report n. FCC-16601 Rev. 03, page 23 / 65

6. OPERATION WITHIN THE BAND 902 - 928 MHz

Frequency hopping systems shall have hopping channel carrier frequencies separated by a minimum of 25 kHz or the 20 dB bandwidth of the hopping channel, whichever is greater.

6.1. NUMBER OF HOPPING CHANNEL

For frequency hopping systems operating in the 902 – 928 MHz band:

- if the 20 dB bandwidth of the hopping channel is less than 250 kHz, the system shall use at least 50 hopping frequencies;
- if the 20 dB bandwidth of the hopping channel is 250 kHz or greater, the system shall use at least 25 hopping frequencies.

The maximum allowed 20 dB bandwidth of the hopping channel is 500 kHz.

Measurement

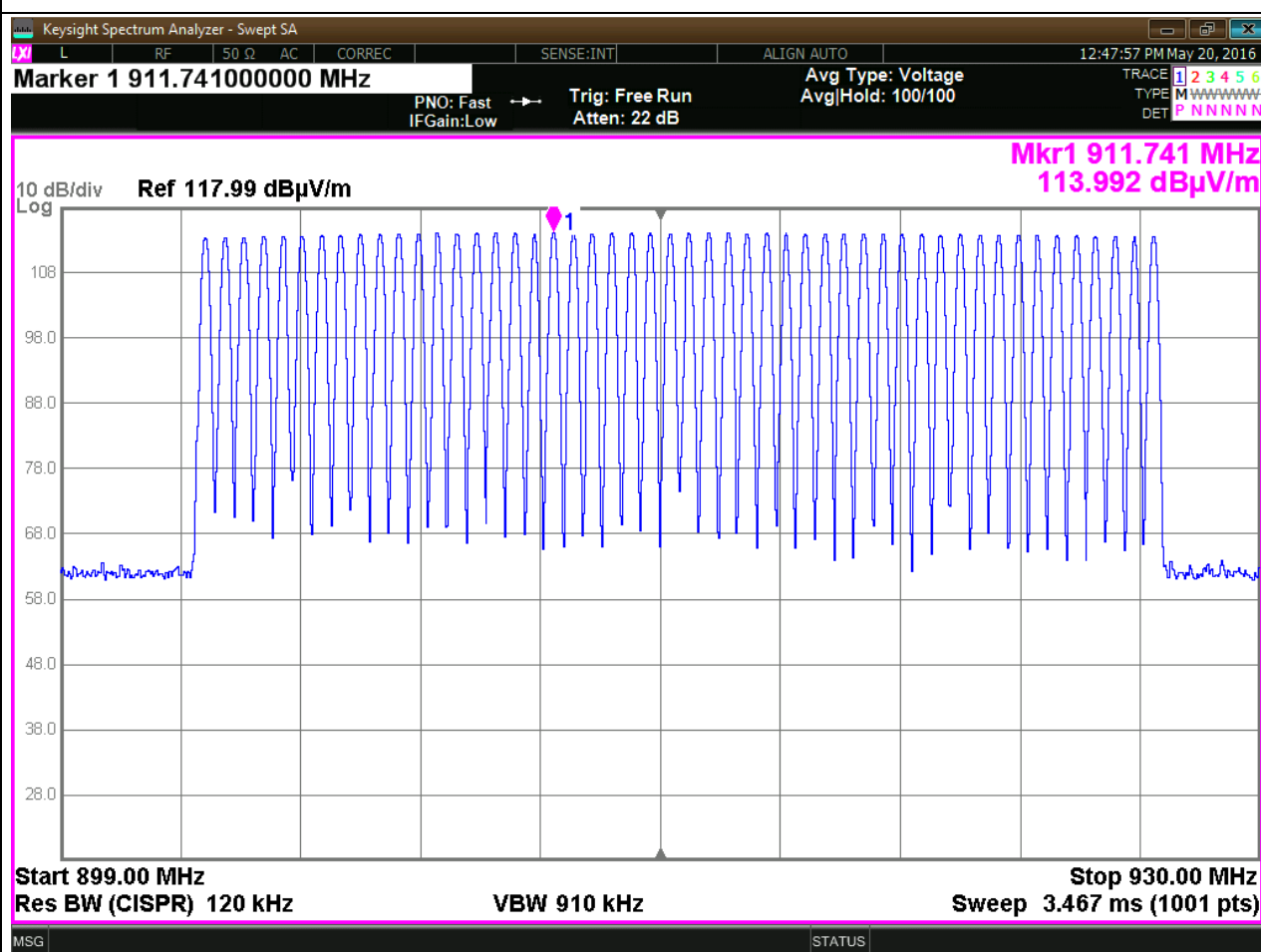


Fig. 6.1

This document may be only fully reproduced.

Every partial reproduction is only allowed after written approval released by G.S.D. S.r.l.

Report n. FCC-16601 Rev. 03, page 24 / 65

6.2. CARRIER FREQUENCY SEPARATION

Frequency hopping systems shall have hopping channel carrier frequencies separated by a minimum of 25 kHz or the 20 dB bandwidth of the hopping channel, whichever is greater.

Measurement

The following figures show the acquired graphics.

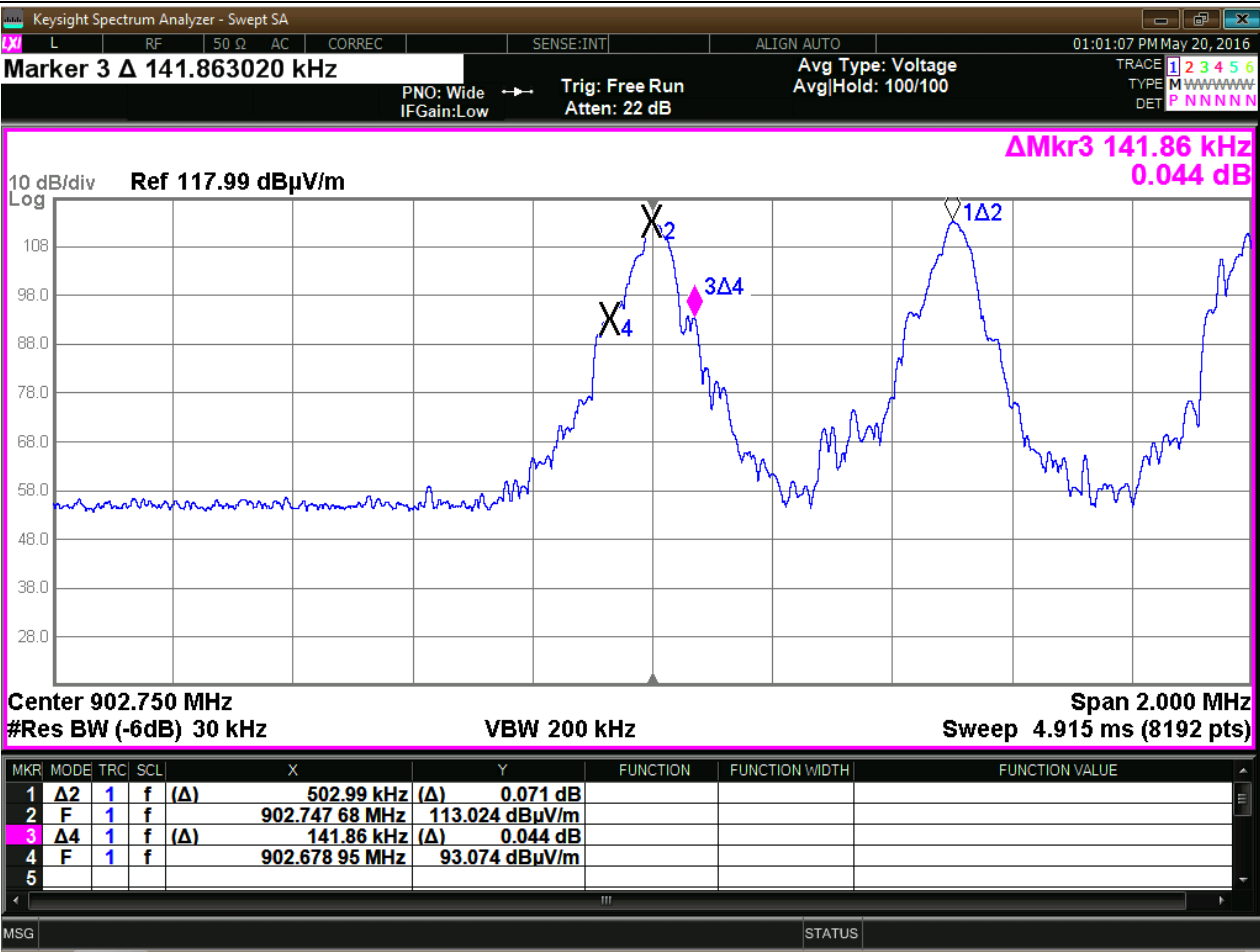


Fig. 6.2
Modulation ; Channels: 0 to 1; Maxhold

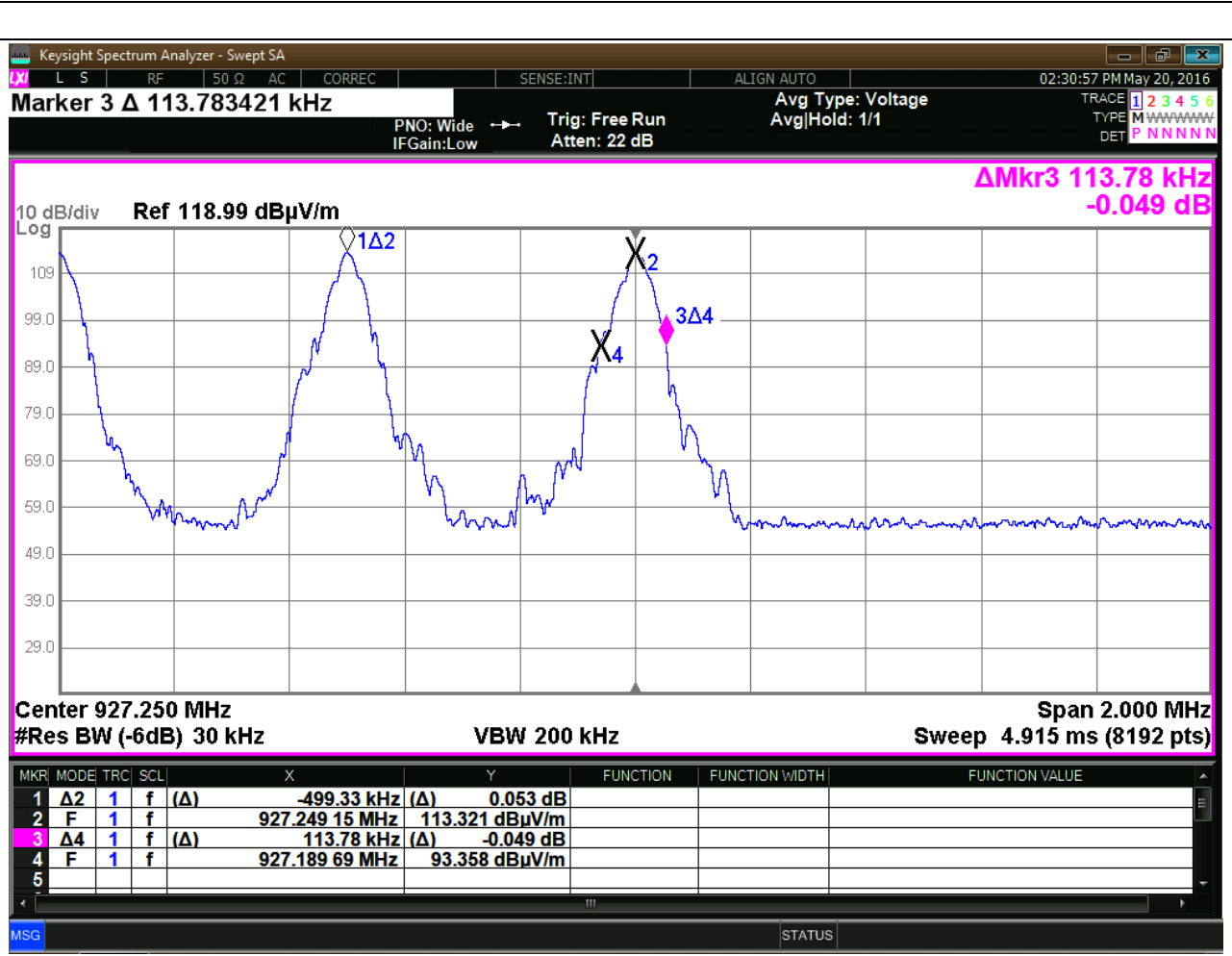


Fig. 6.4
Modulation; Channels: 49 to 48; Maxhold.

6.3. *TIME OF OCCUPANCY*

Measurements

Channel	Dwell Time (ms)	Nr. of Transmission for channel (in 40 s) [average]	Pol.	Time of Occupancy in 20 s (ms) [average]
0	33.0	4 [4.29]	--	66.0 [70.8]
25	33.1	4 [4.27]	--	66.2 [70.7]
49	33.1	4 [4.26]	--	66.2 [70.4]

The following figures show the acquired graphics.

This document may be only fully reproduced.

Every partial reproduction is only allowed after written approval released by G.S.D. S.r.l.

Report n. FCC-16601 Rev. 03, page 28 / 65

Time of transmission

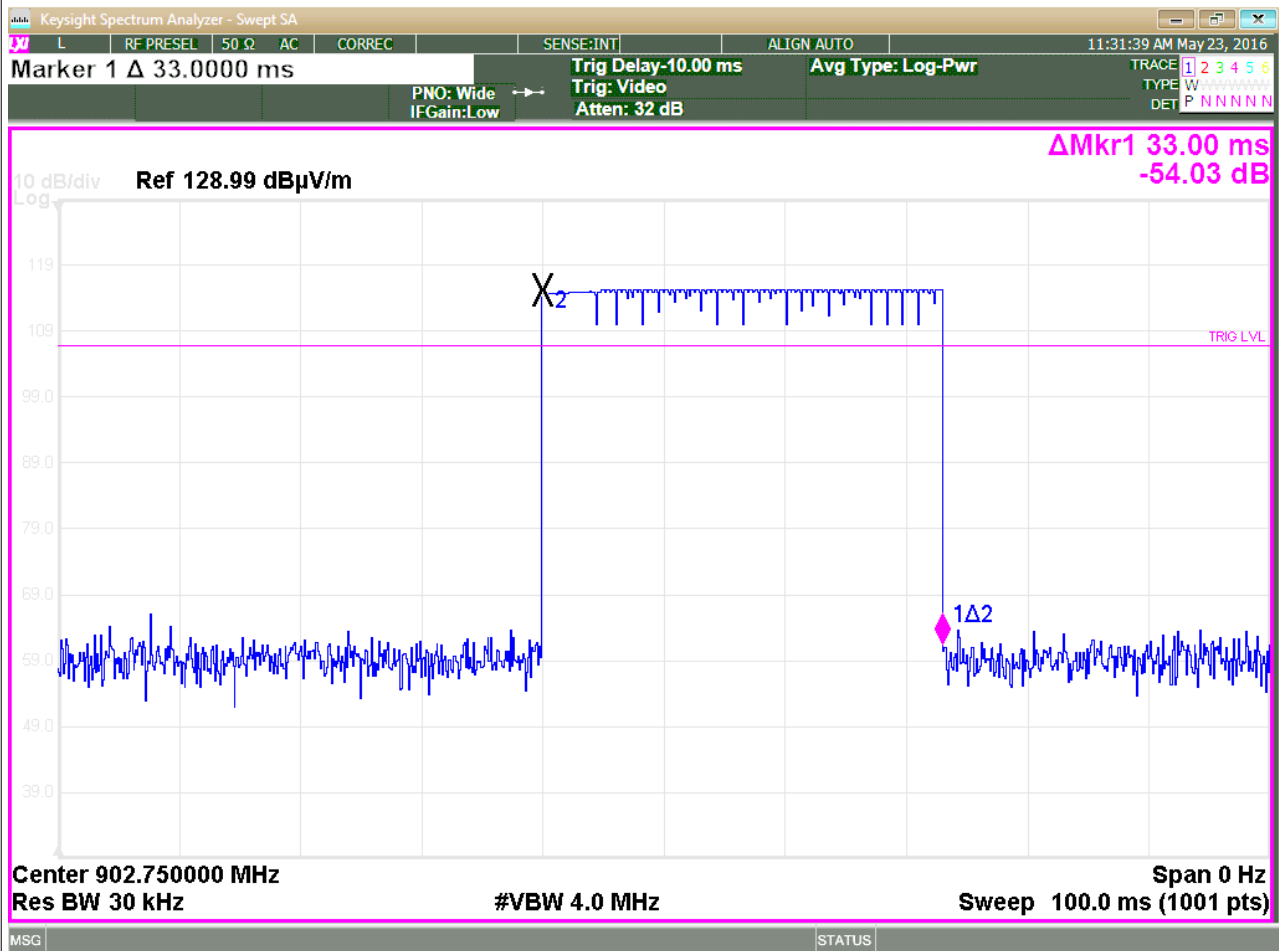


Fig. 6.5
Channel: 0 (Maxhold)

Nr. of Transmission for channel

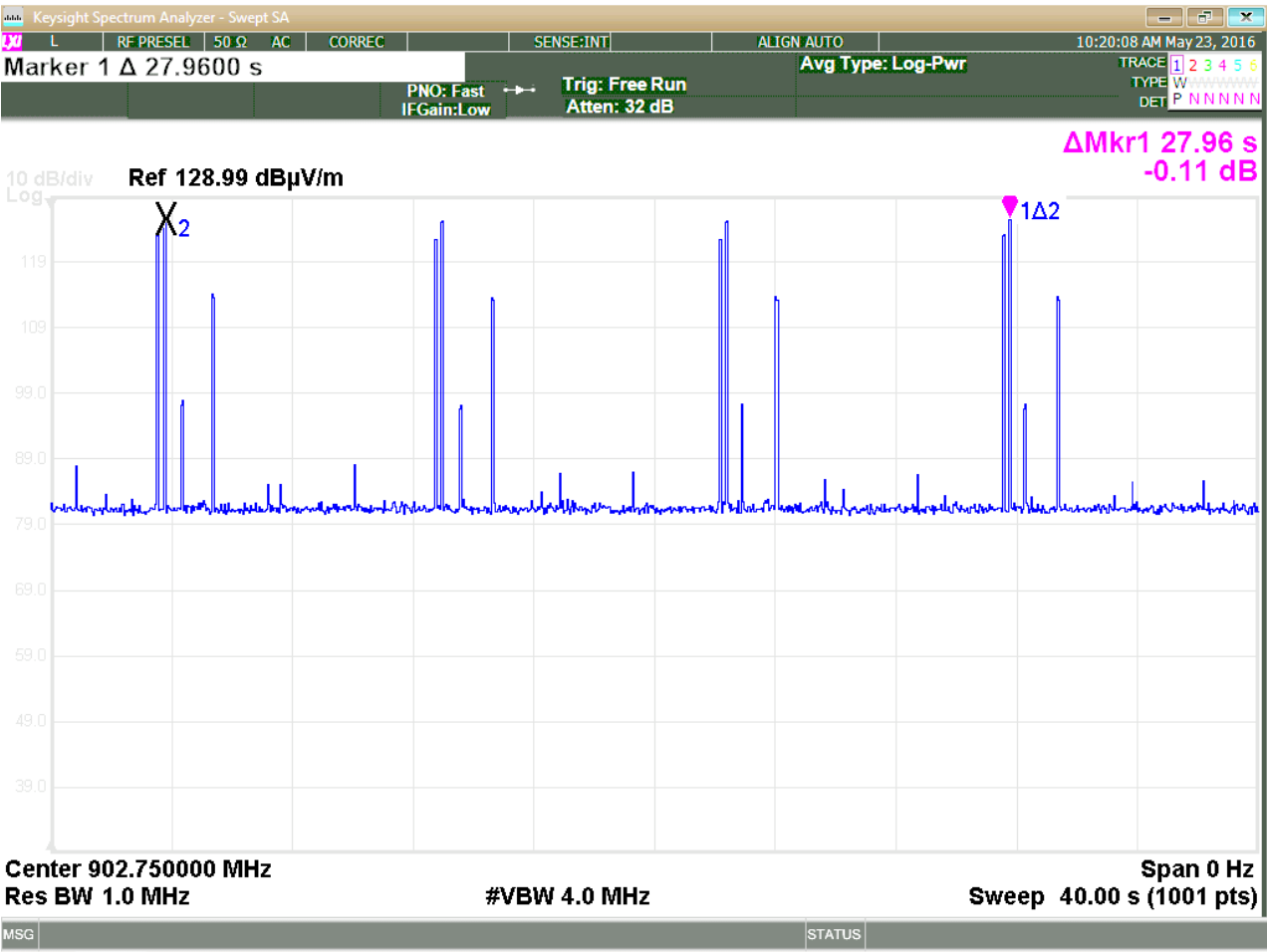


Fig. 6.6
Channel: 0

Time of transmission

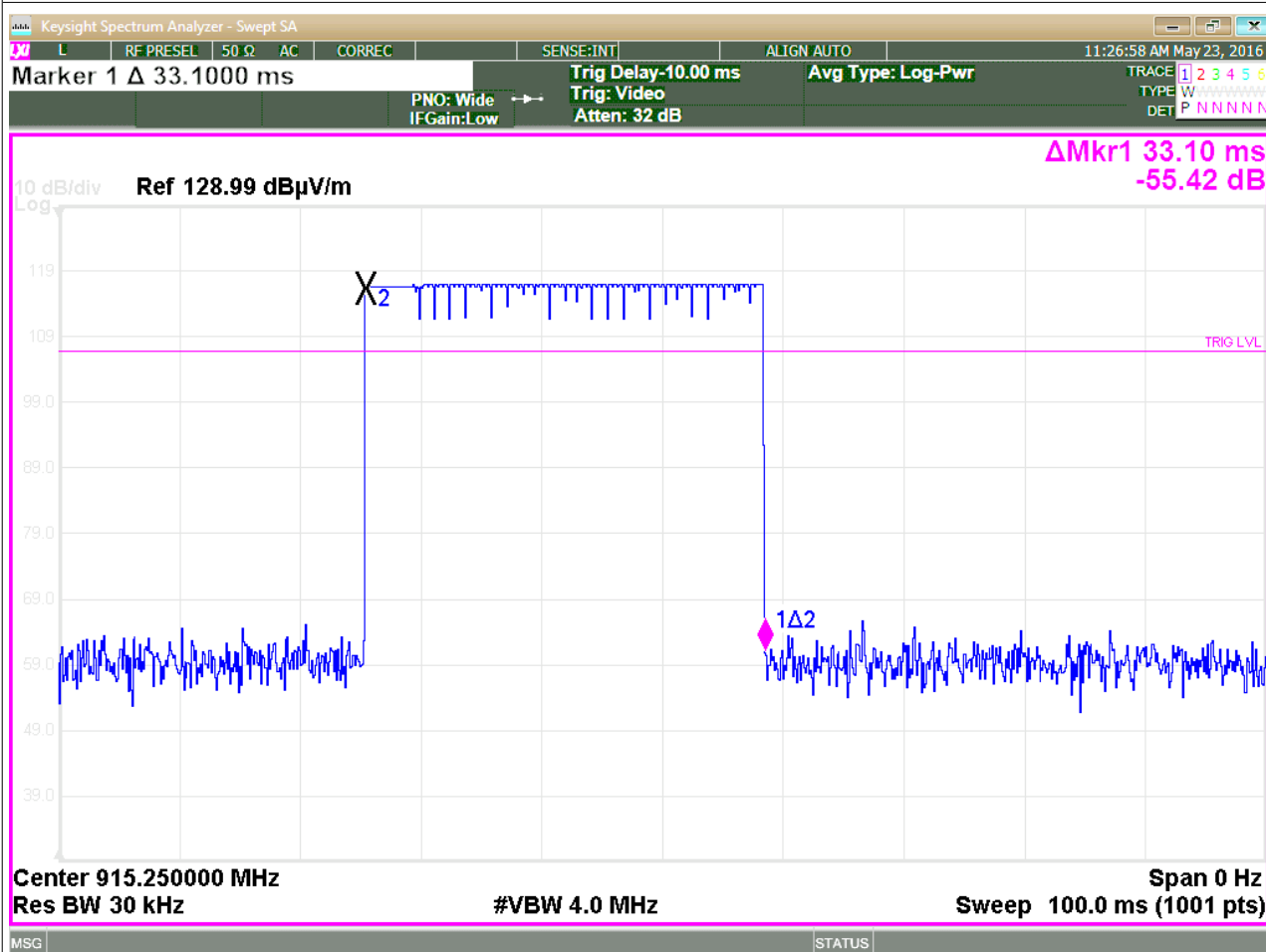


Fig. 6.7
Channel: 25 (Maxhold)

Nr. of Transmission for channel

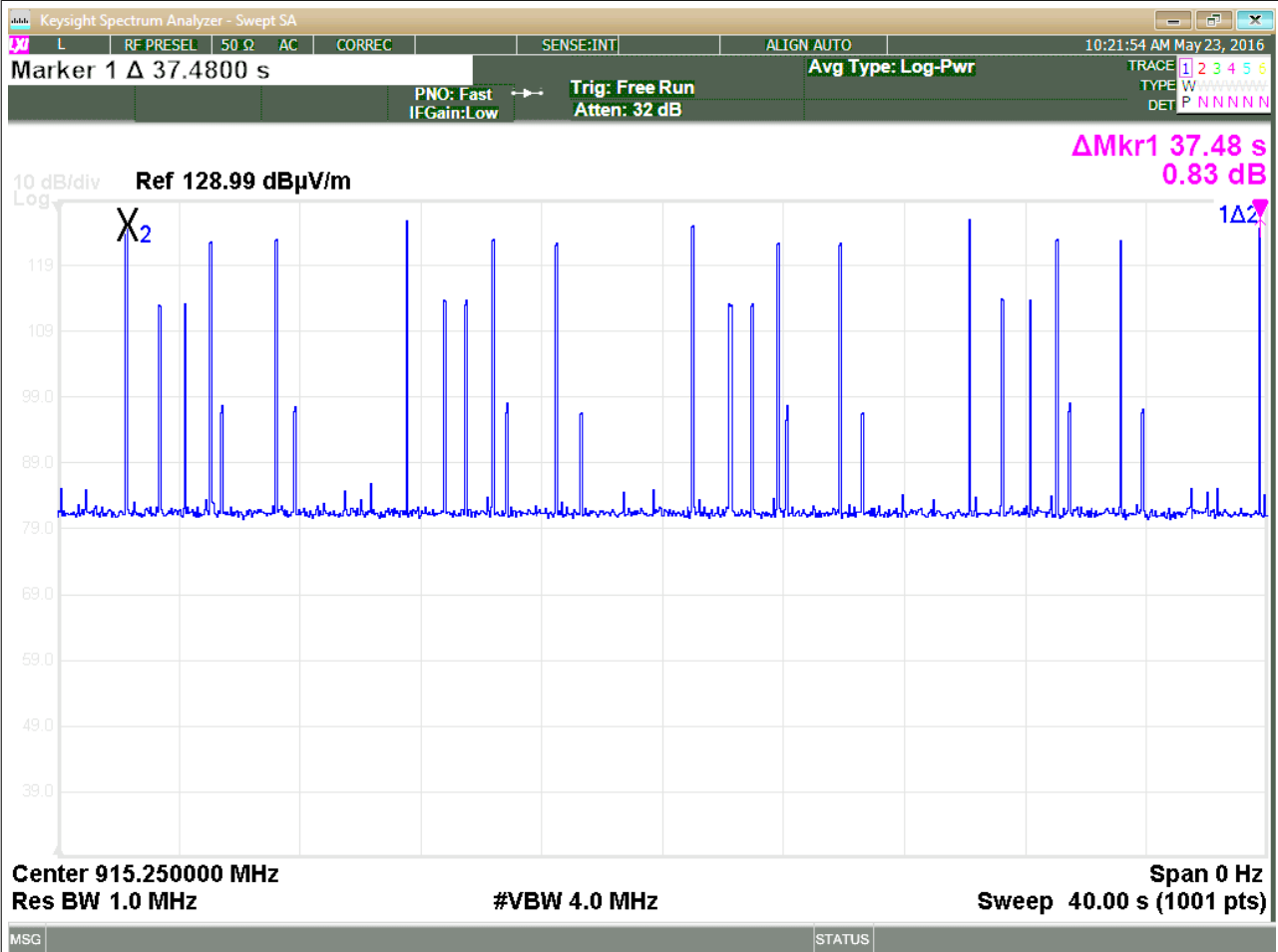


Fig. 6.8
Channel: 25

Time of transmission

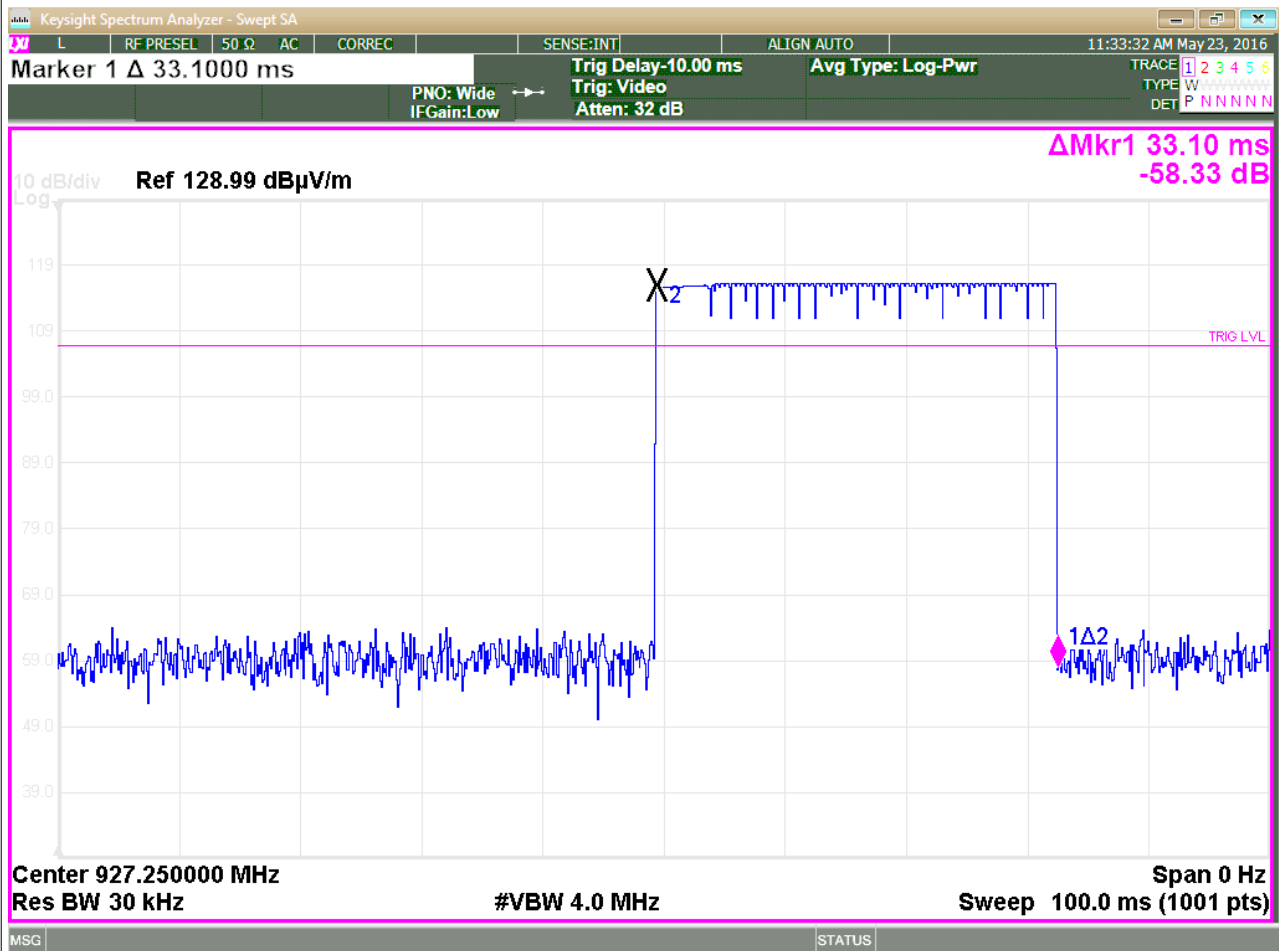
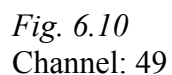


Fig. 6.9
Channel: 49 (Maxhold)



6.4. 20 dB BANDWIDTH

Measurements

Channel	Frequency (Pol. V / Pol. H) [MHz]	Bandwidth (Pol. V / Pol. H) [kHz]
0	902.7485 / 902.7495	59.0 / 57.0
25	915.2505 / 915.2500	63.0 / 50.0
49	927.2505 / 927.2495	55.5 / 50.5

The following figures show the acquired graphics.



Fig. 6.11
Pol. V

Ch 25: Bandwidth

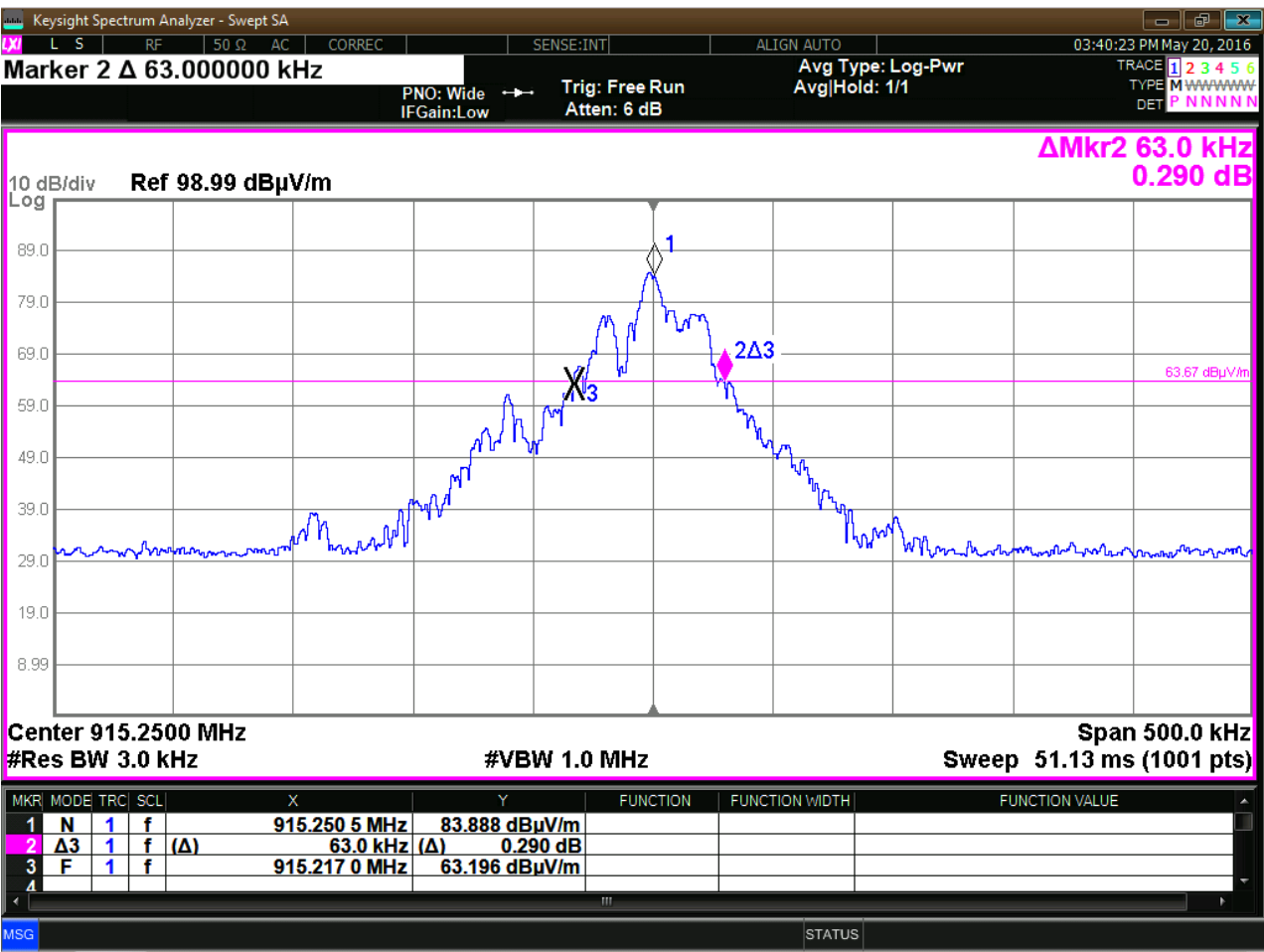


Fig. 6.12
Pol. V

Ch 49: Bandwidth

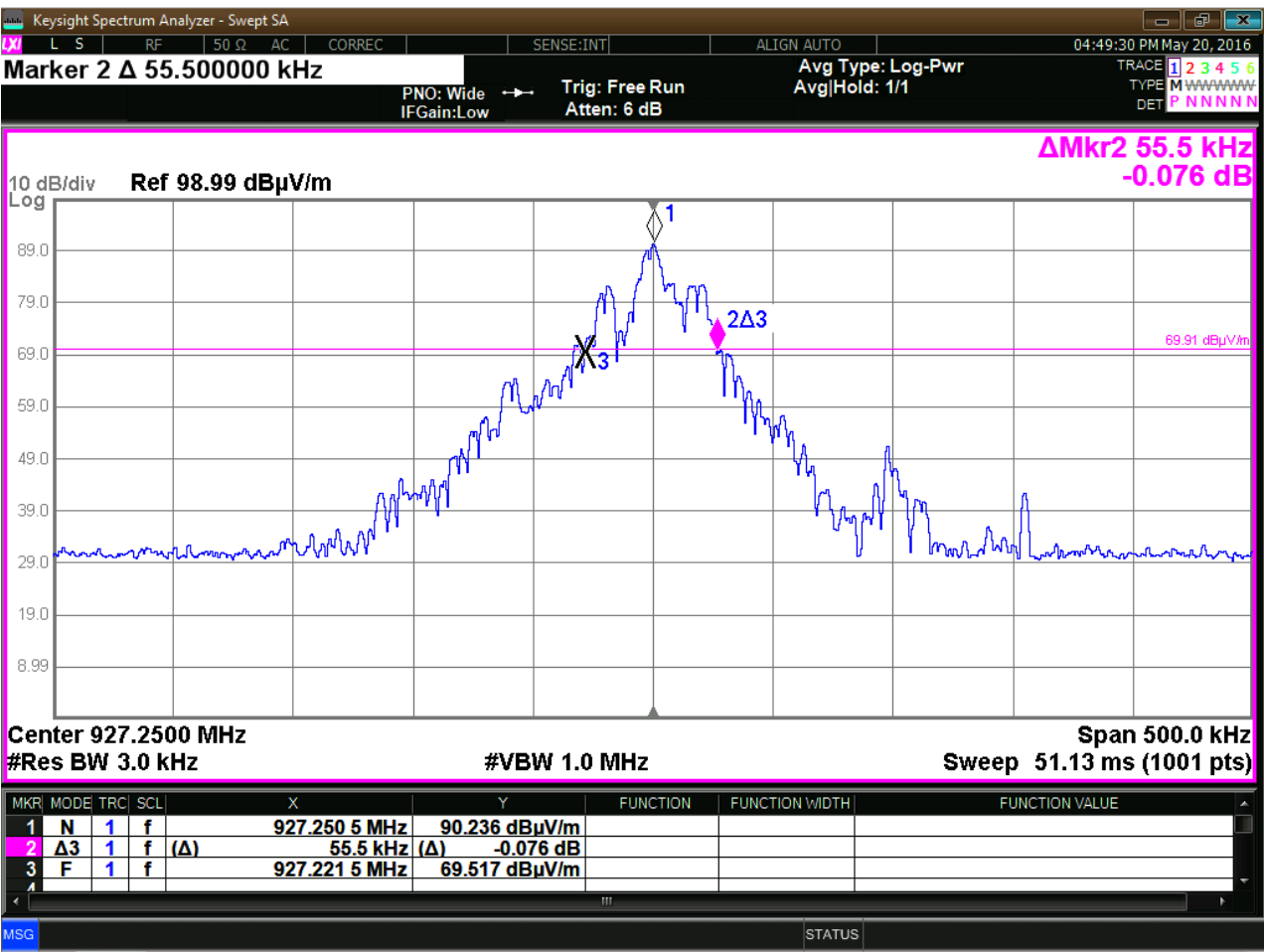


Fig. 6.13
Pol. V

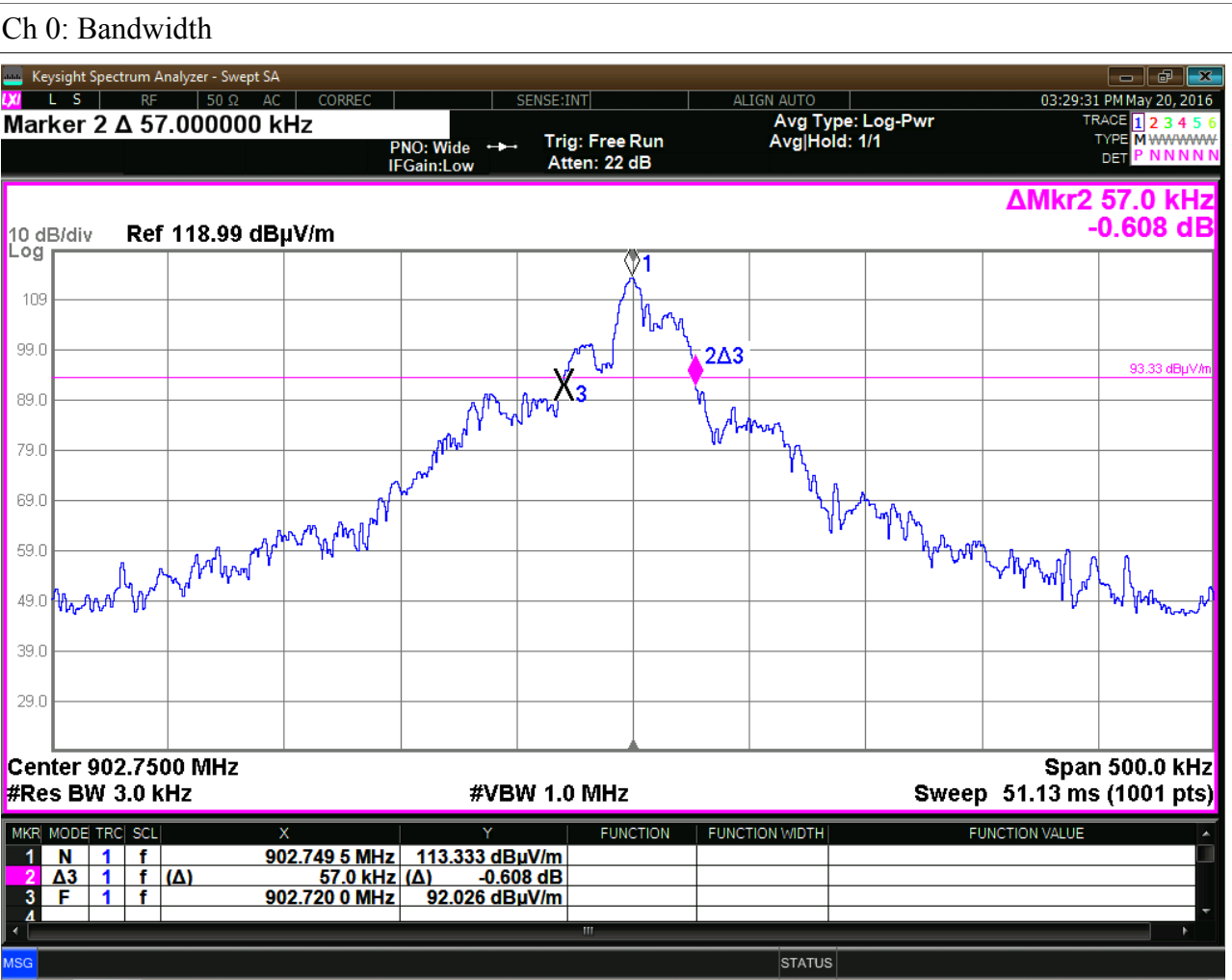


Fig. 6.14
Pol. H

Ch 25: Bandwidth



Fig. 6.15
Pol. H

Ch 49: Bandwidth



Fig. 6.16
Pol. H

6.5. *PEAK OUTPUT POWER*

Equipment shall meet the limits below.

<i>FREQUENCY RANGE</i> [MHz]	<i>NR OF CHANNEL</i> [#]	<i>RF POWER OUTPUT LIMIT</i> [dBm]
902 – 928	50	30.0 (1 W)
902 – 928	< 50	24.0 (0.25 W)

Measurement

Eirp and Erp measurement were measured accordingly to ANSI C63.10: 2013 and 412172 D01 Determining ERP and EIRP v01r01.

Field Strength approach (linear terms):

$$erp = (E * d)^2 / (30 * 1.64) \quad (1)$$

E = Electric field strength in V/M

d = measure distance in m

Note: for f < 1GHz the radiated power is in ERP

The measured values are:

<i>CHANNEL</i>	Electric Field [dBμV/m] / Output Power [dBm]	
	Pol. V	Pol. H
0	85.2 / -12.1	113.5 / 16.1
25	86.6 / -10.7	114.1 / 16.7
49	92.2 / -5.2	113.3 / 15.9

Maximum Electric Field 114.1 dBμV/m = 0.507 V/m

d = 3m

Accordingly to (1) erp is calculated:

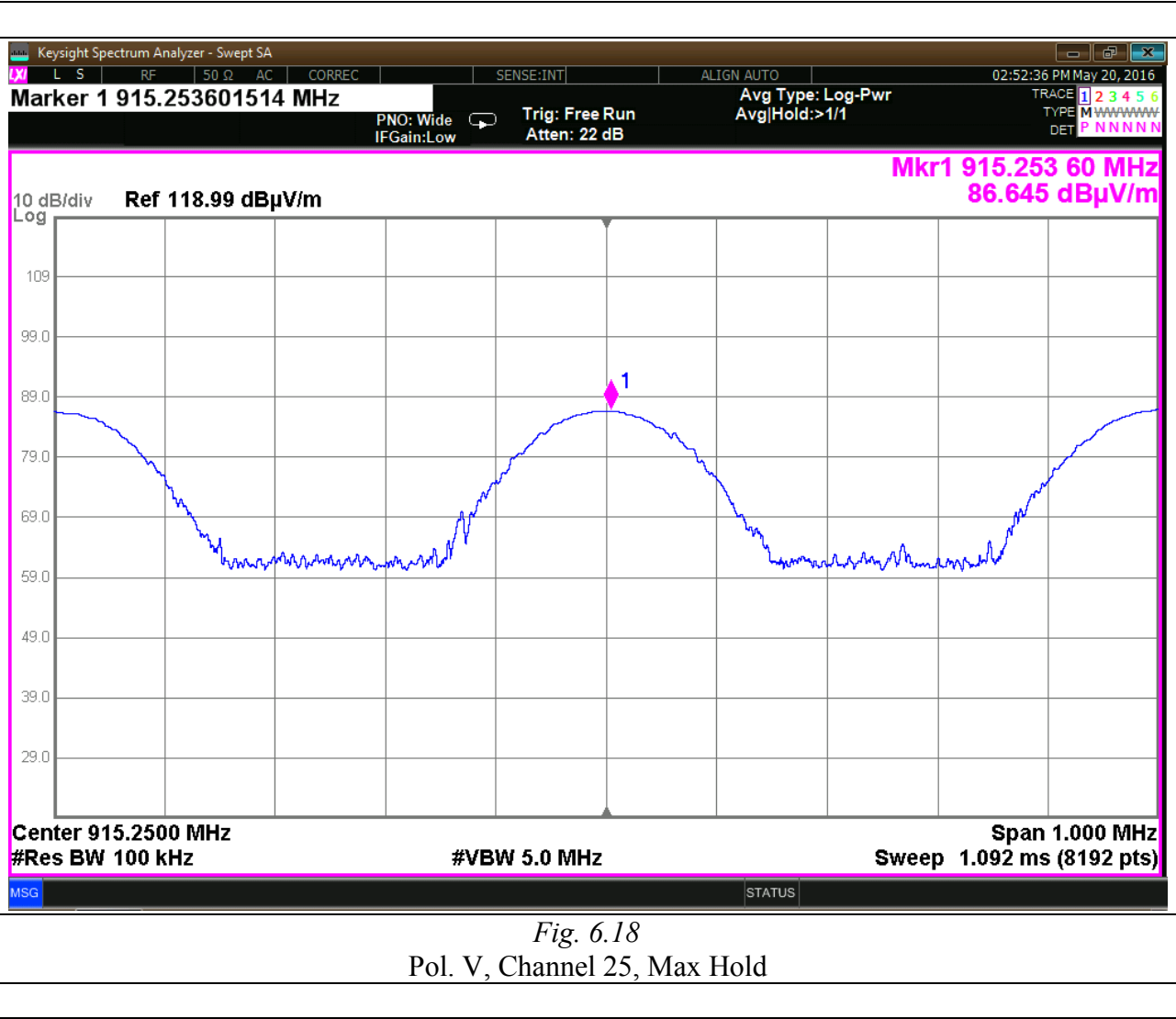
$$erp = 0.047 \text{ W}$$

The following figures show the acquired graphics.

This document may be only fully reproduced.

Every partial reproduction is only allowed after written approval released by G.S.D. S.r.l.

Report n. FCC-16601 Rev. 03, page 42 / 65



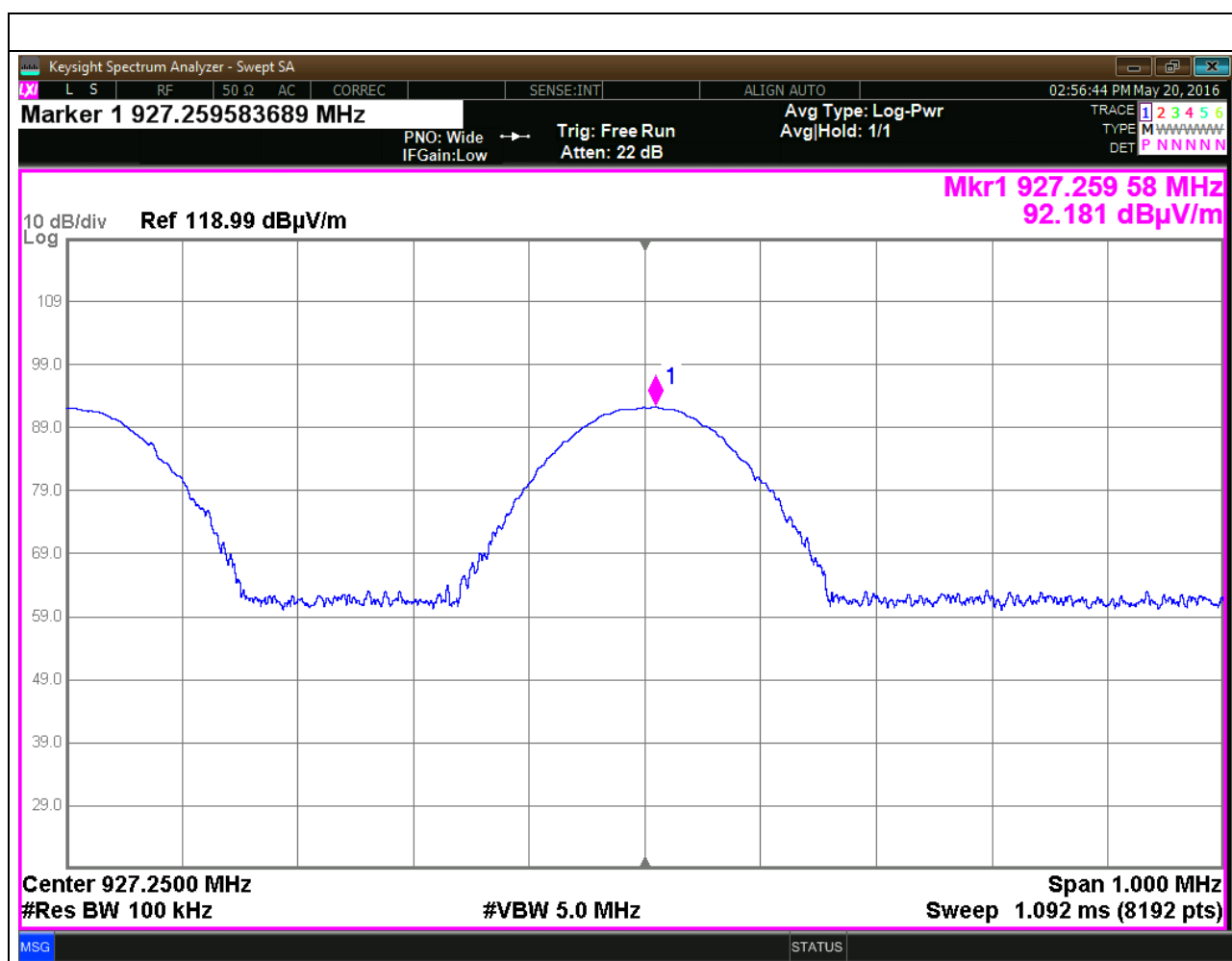
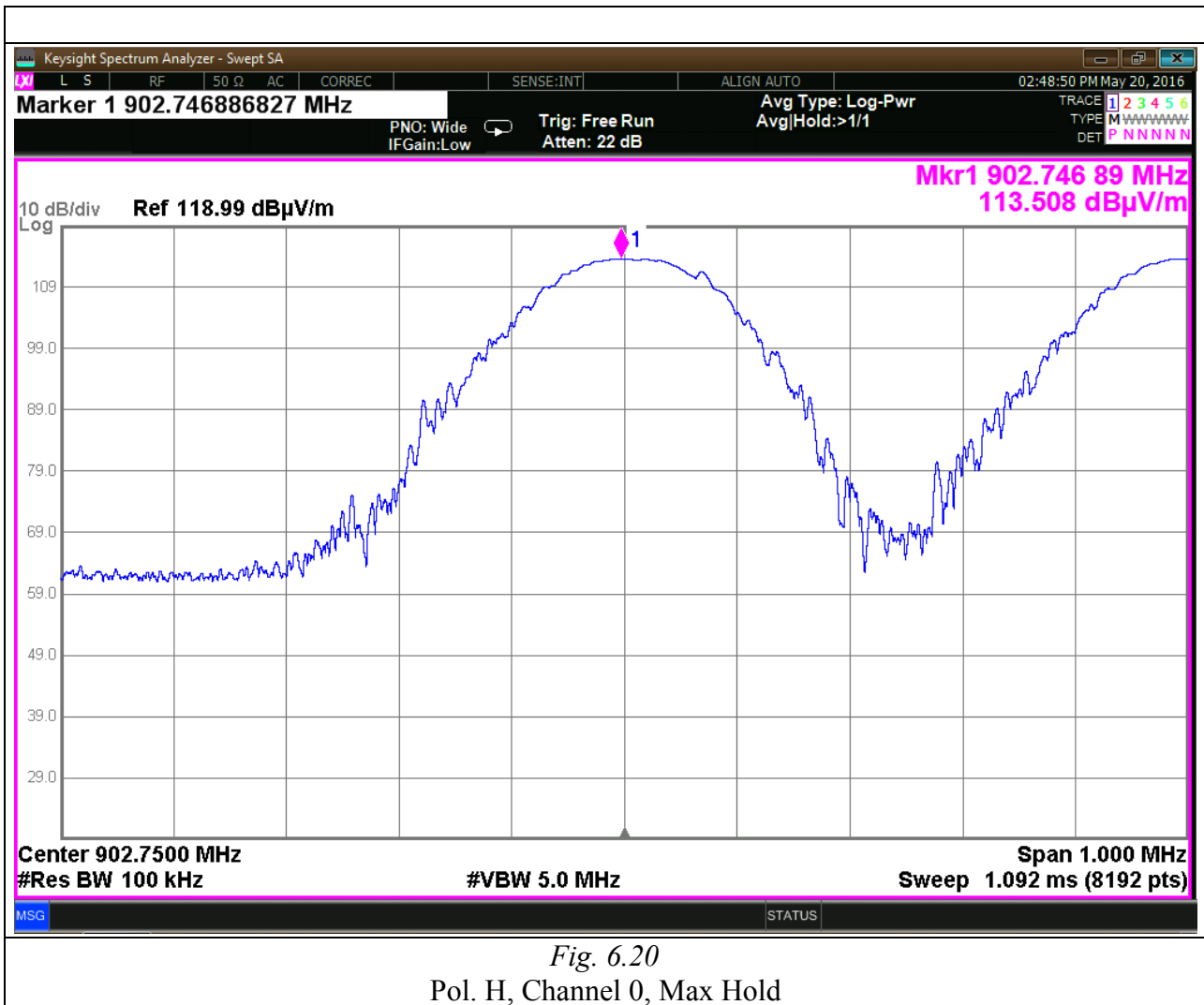


Fig. 6.19
Pol. V, Channel 49, Max Hold



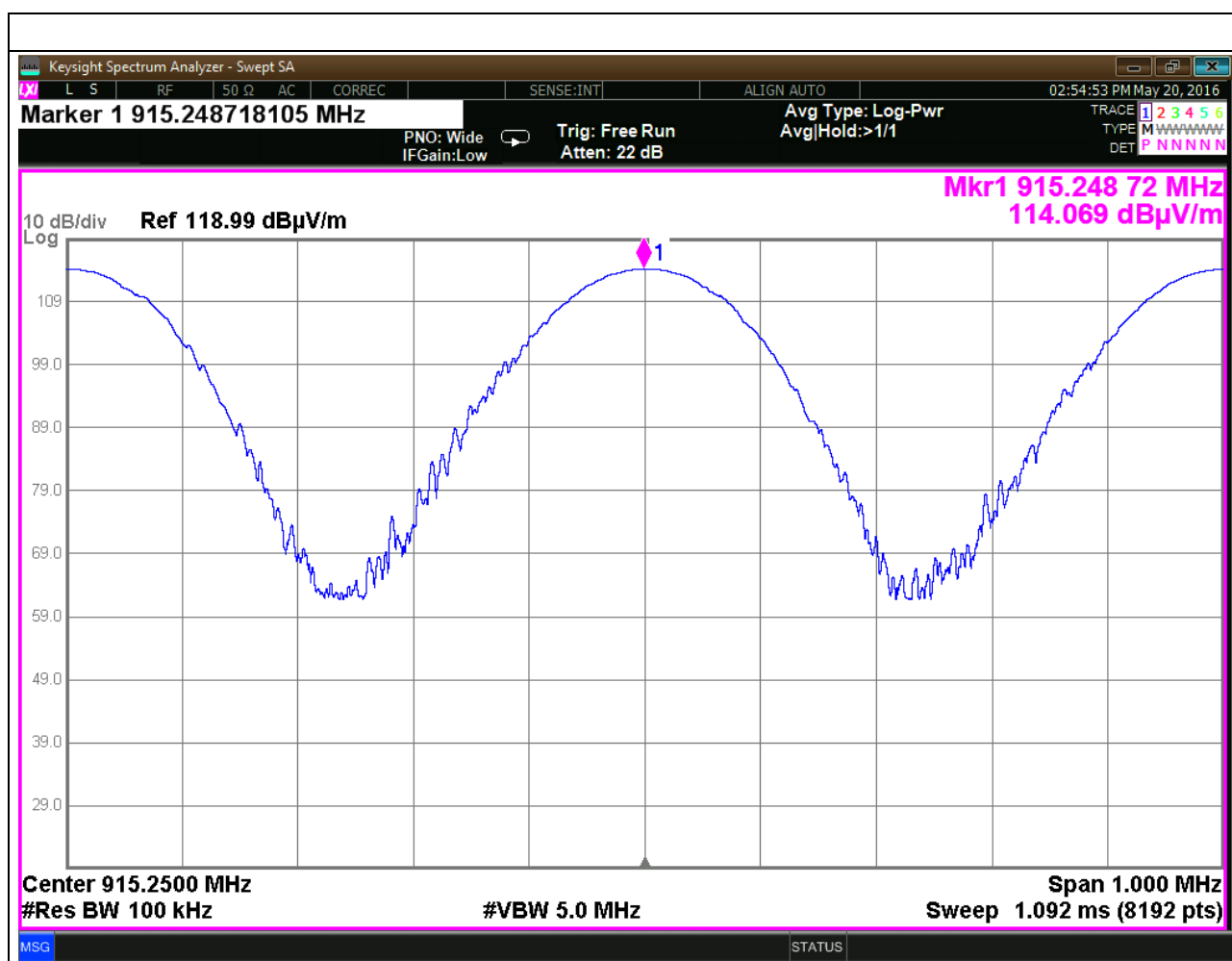
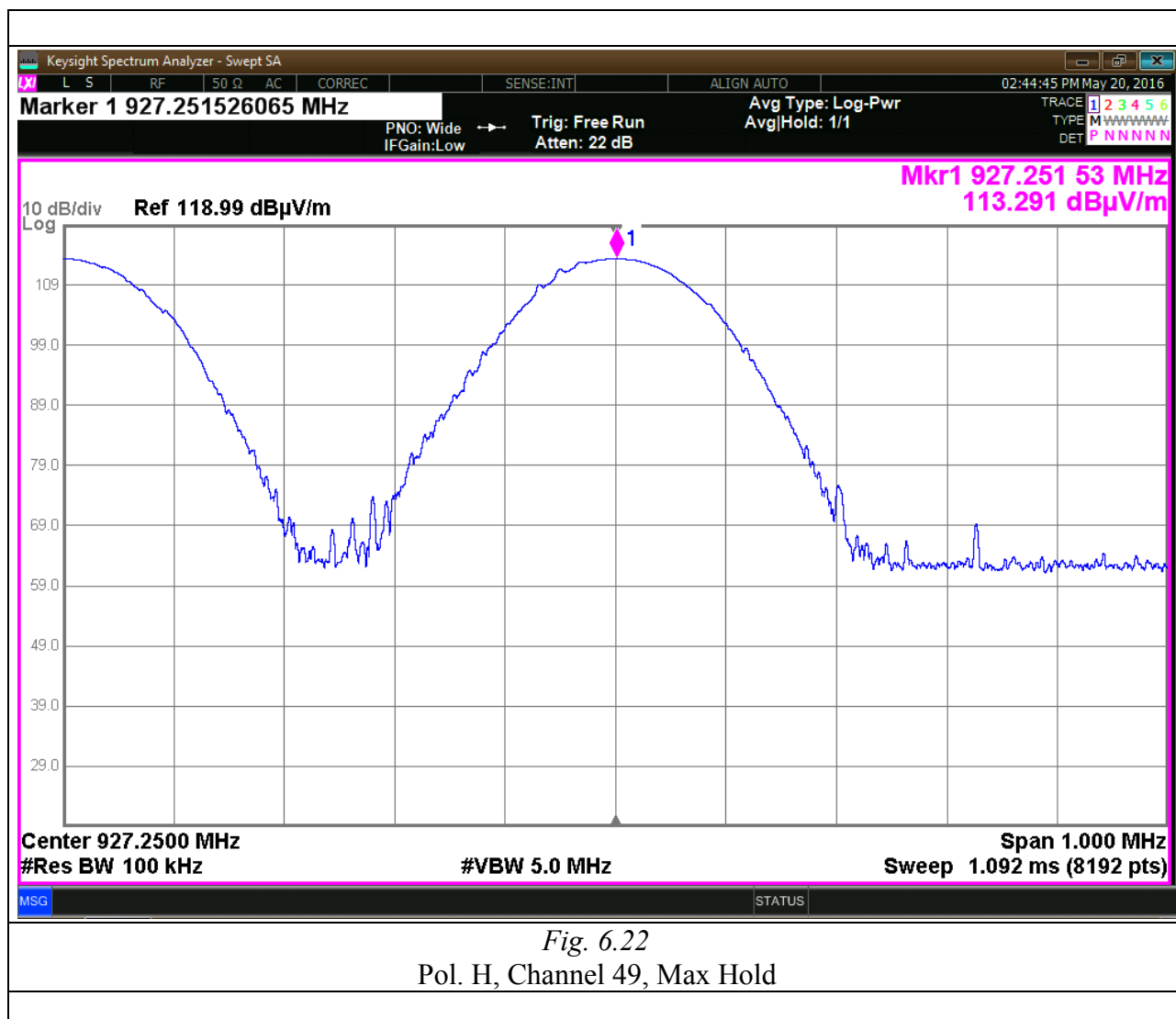


Fig. 6.21
Pol. H, Channel 25, Max Hold

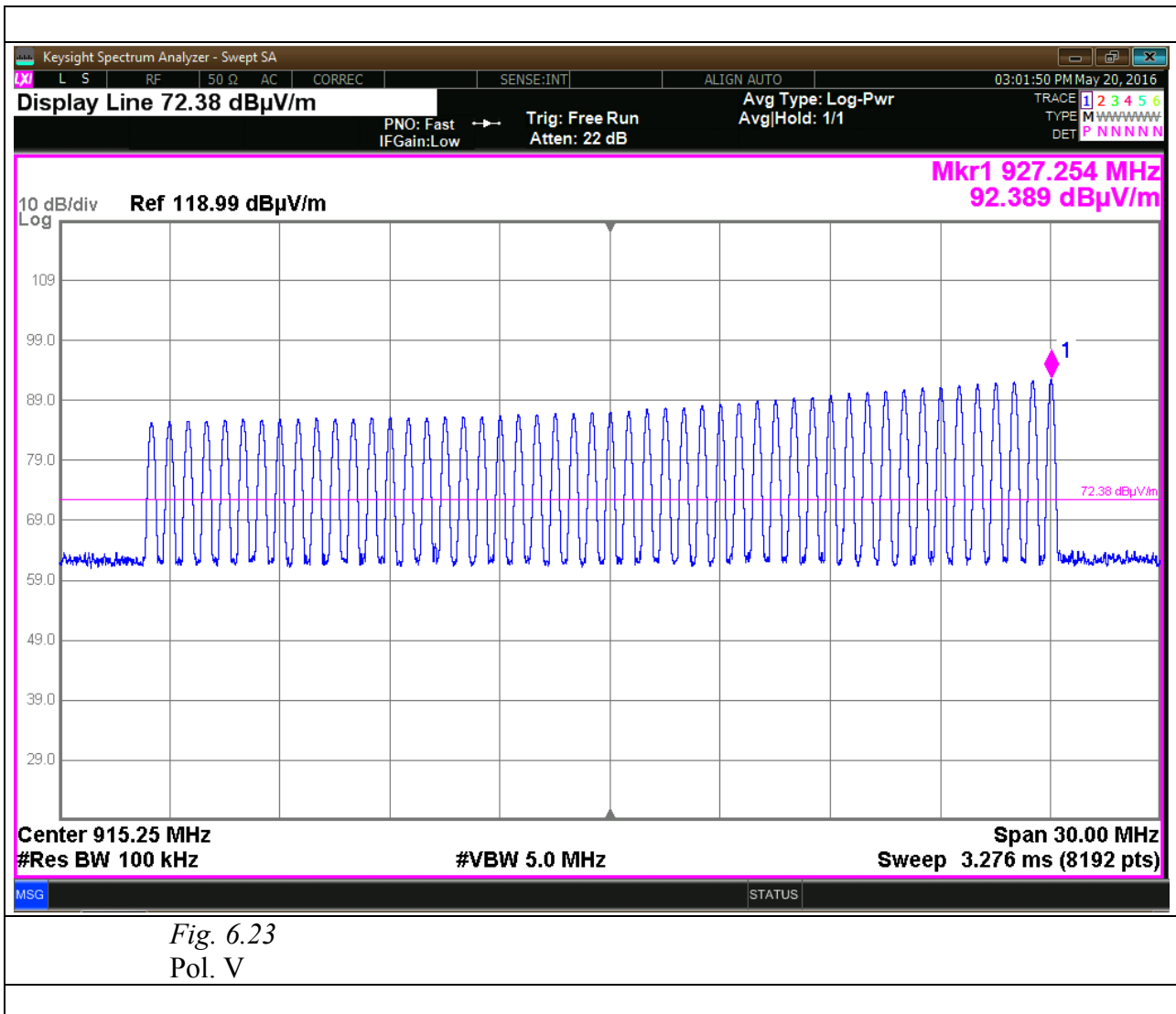


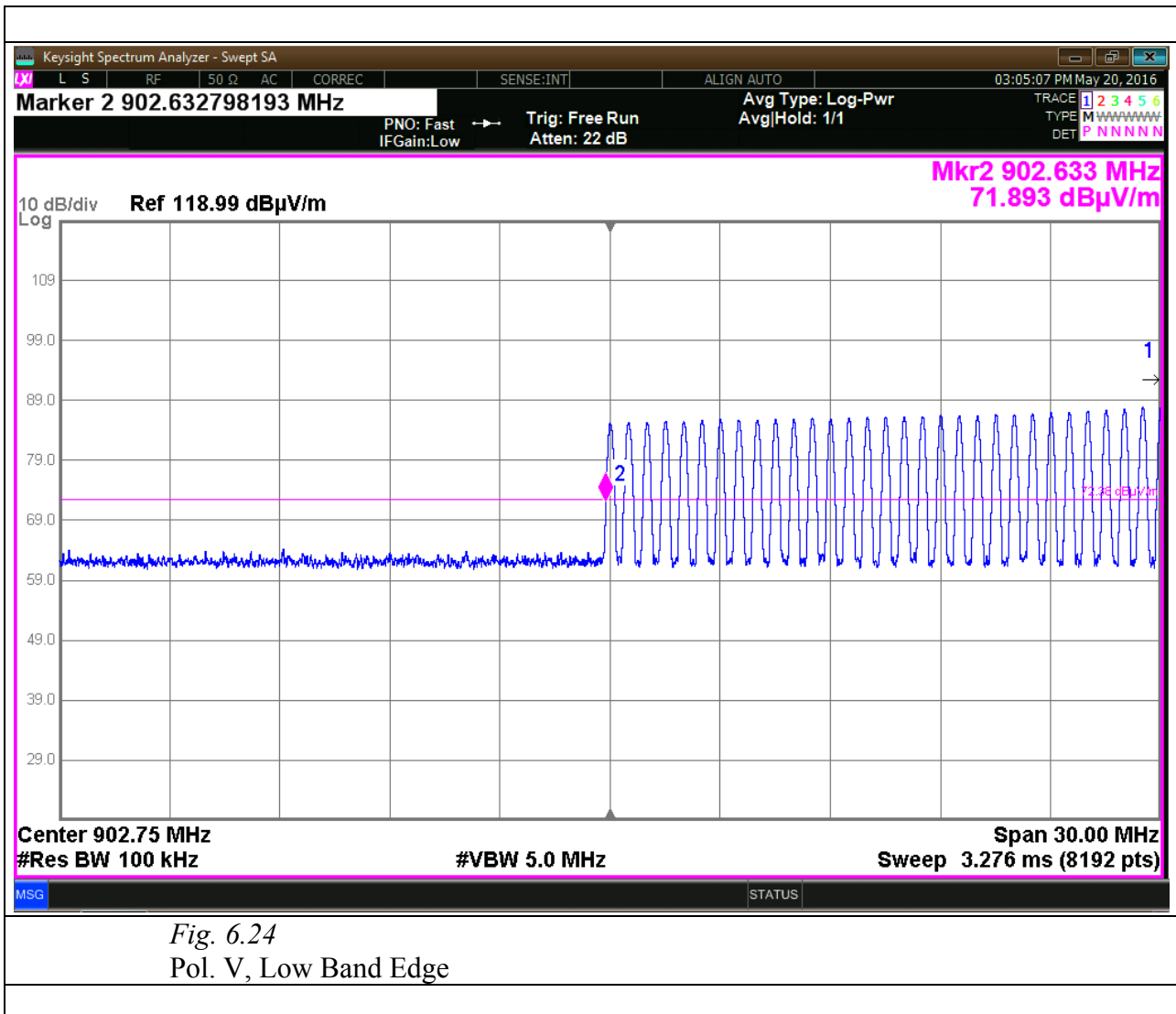
6.6. <i>BAND EDGE</i>
Emissions must be within the band 902-928 MHz.
In any 100 kHz bandwidth outside the frequency band in which the spread spectrum or digitally modulated intentional radiator is operating, the radio frequency power that is produced by the intentional radiator shall be at least 20 dB below that in the 100 kHz bandwidth within the band that contains the highest level of the desired power, based on either an RF conducted or a radiated measurement, provided the transmitter demonstrates compliance with the peak conducted power limits.
If the transmitter complies with the conducted power limits based on the use of RMS averaging over a time interval, as permitted under paragraph (b)(3) of this section, the attenuation required under this paragraph shall be 30 dB instead of 20 dB.
Attenuation below the general limits specified in §15.209(a) is not required. In addition, radiated emissions which fall in the restricted bands, as defined in §15.205(a), must also comply with the radiated emission limits specified in §15.209(a) (see §15.205(c)).
<u>Measurements</u>
The following figures show the acquired graphics.

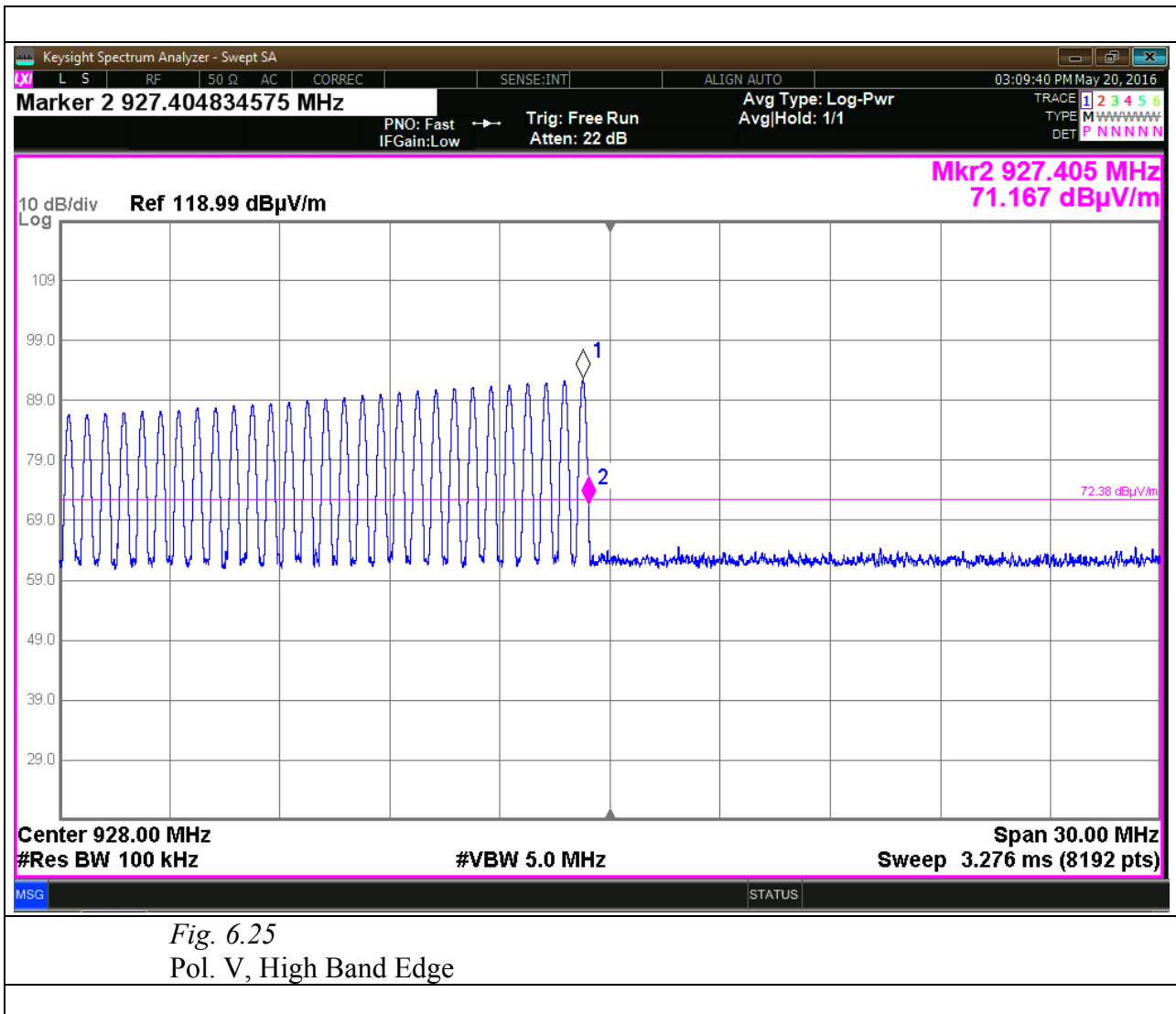
This document may be only fully reproduced.

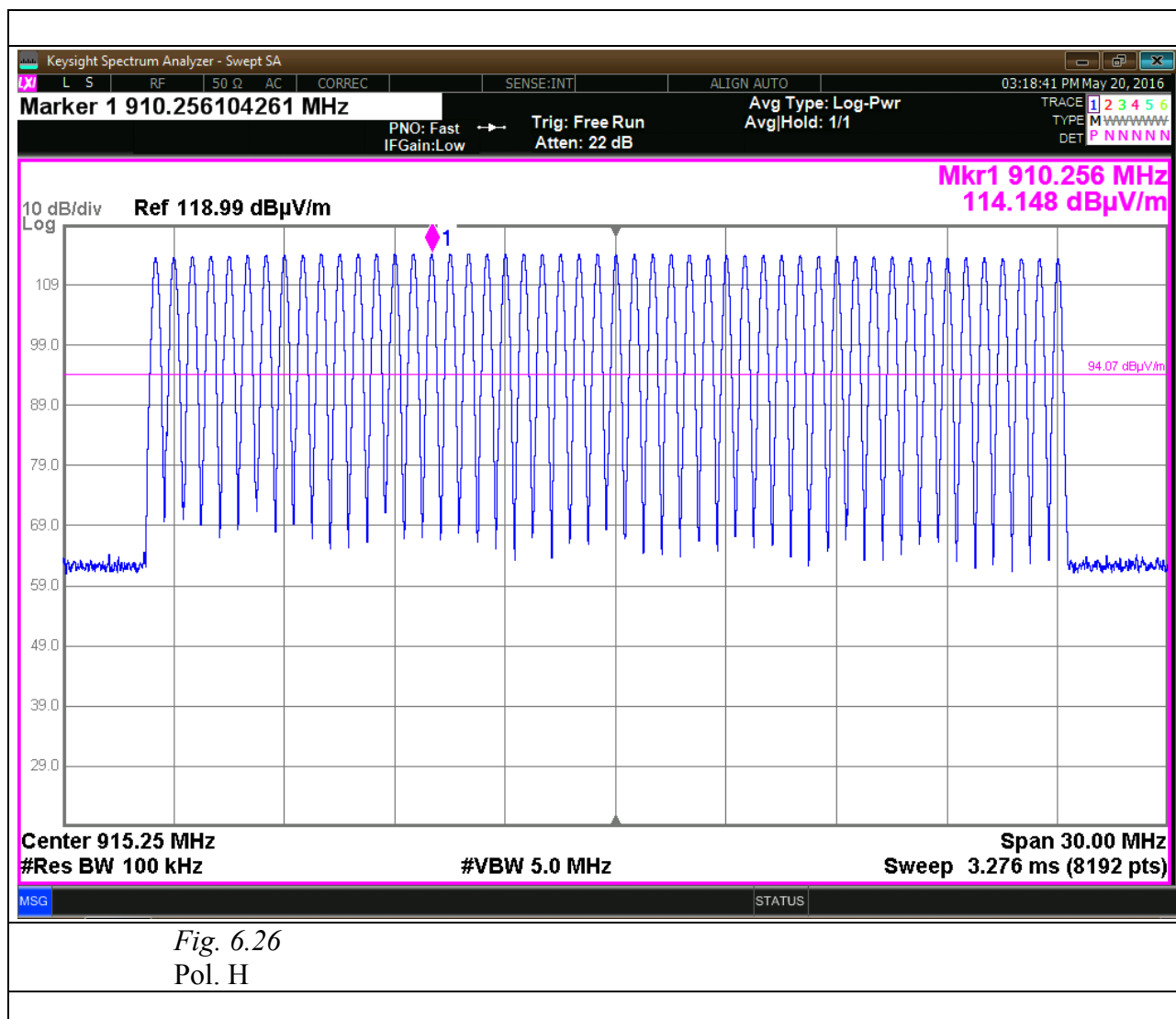
Every partial reproduction is only allowed after written approval released by G.S.D. S.r.l.

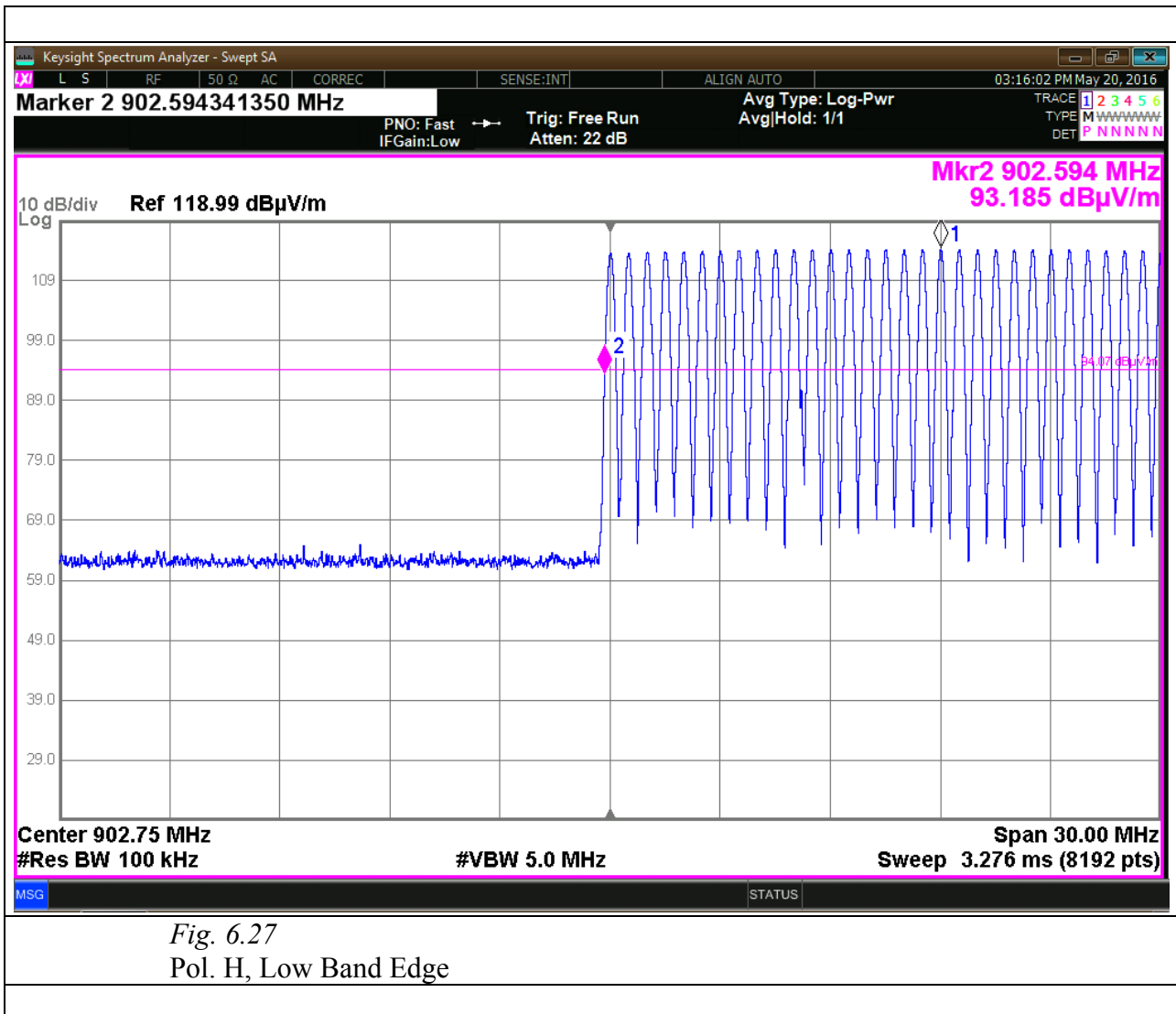
Report n. FCC-16601 Rev. 03, page 49 / 65

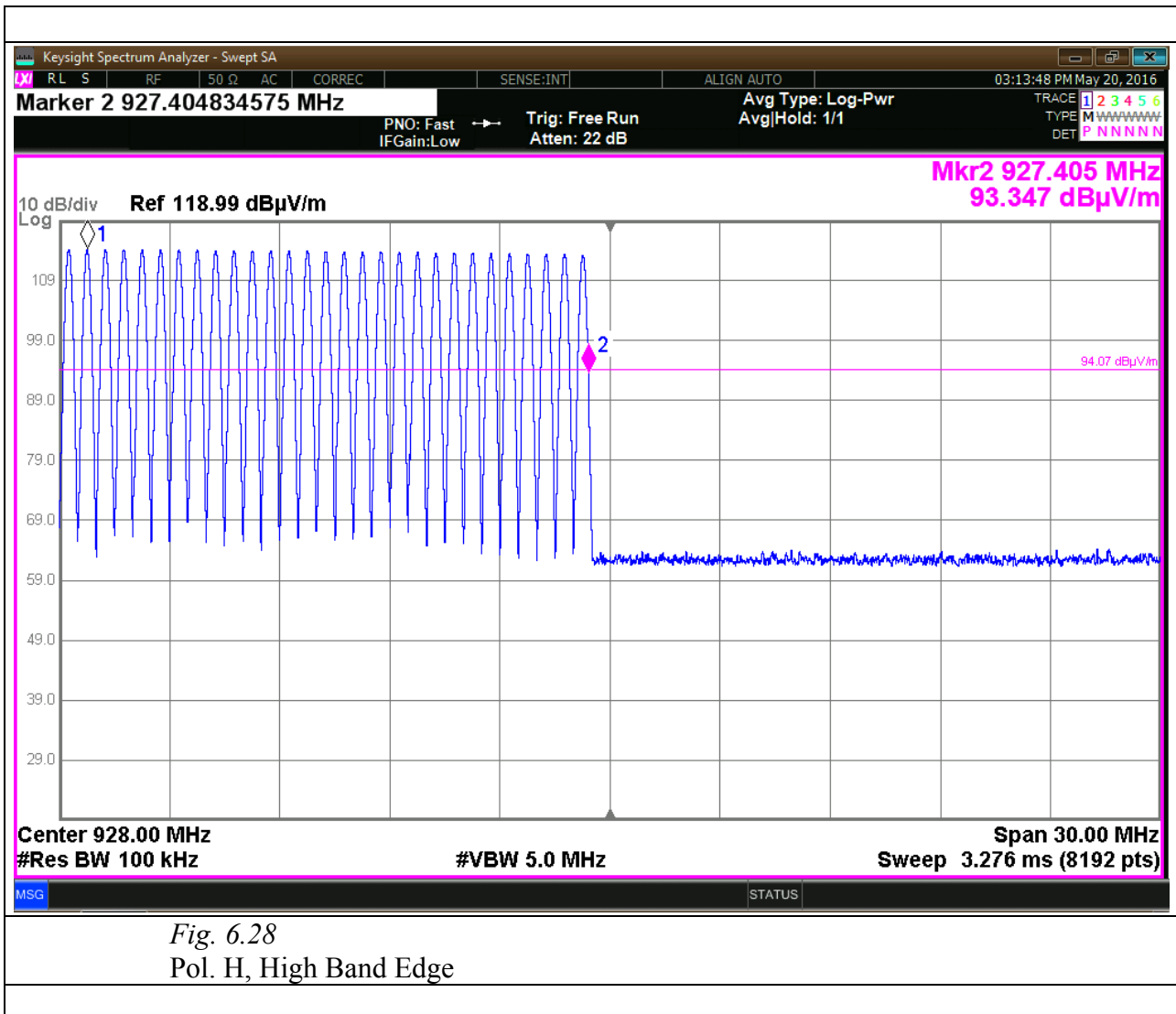












7. RADIATED OPERATION WITHIN THE BAND 902 - 928 MHz**7.1. SPURIOUS RADIATED EMISSIONS**

Nr Harmonics	AVG Level (dBμV/m)						AVG Limits (dBμV/m)	Remark
	Ch 0		Ch 25		Ch 49			
	F (MHz)	(dBμV/m)	F (MHz)	(dBμV/m)	F (MHz)	(dBμV/m)		
2	--	--	--	--	--	--	54.0	
3	--	--	--	--	--	--	54.0	
4	--	--	--	--	--	--	54.0	
5	--	--	--	--	--	--	54.0	
6	--	--	--	--	--	--	54.0	
7	--	--	--	--	--	--	54.0	
8	--	--	--	--	--	--	54.0	
9	--	--	--	--	--	--	54.0	
10	--	--	--	--	--	--	54.0	

Note: Levels below 20 dB of limits are indicated with (--).

Nr Harmonics	Peak Level (dBµV/m)						PK Limits (dBµV/m)	Remark
	Ch 0		Ch 25		Ch 49			
	F (MHz)	(dBµV/m)	F (MHz)	(dBµV/m)	F (MHz)	(dBµV/m)		
2	--	--	--	--	--	--	74.0	
3	--	--	--	--	--	--	74.0	
4	--	--	--	--	--	--	74.0	
5	--	--	--	--	--	--	74.0	
6	--	--	--	--	--	--	74.0	
7	--	--	--	--	--	--	74.0	
8	--	--	--	--	--	--	74.0	
9	--	--	--	--	--	--	74.0	
10	--	--	--	--	--	--	74.0	

Note: Levels below 20 dB of limits are indicated with (--).

*This document may be only fully reproduced.**Every partial reproduction is only allowed after written approval released by G.S.D. S.r.l.**Report n. FCC-16601 Rev. 03, page 56 / 65*

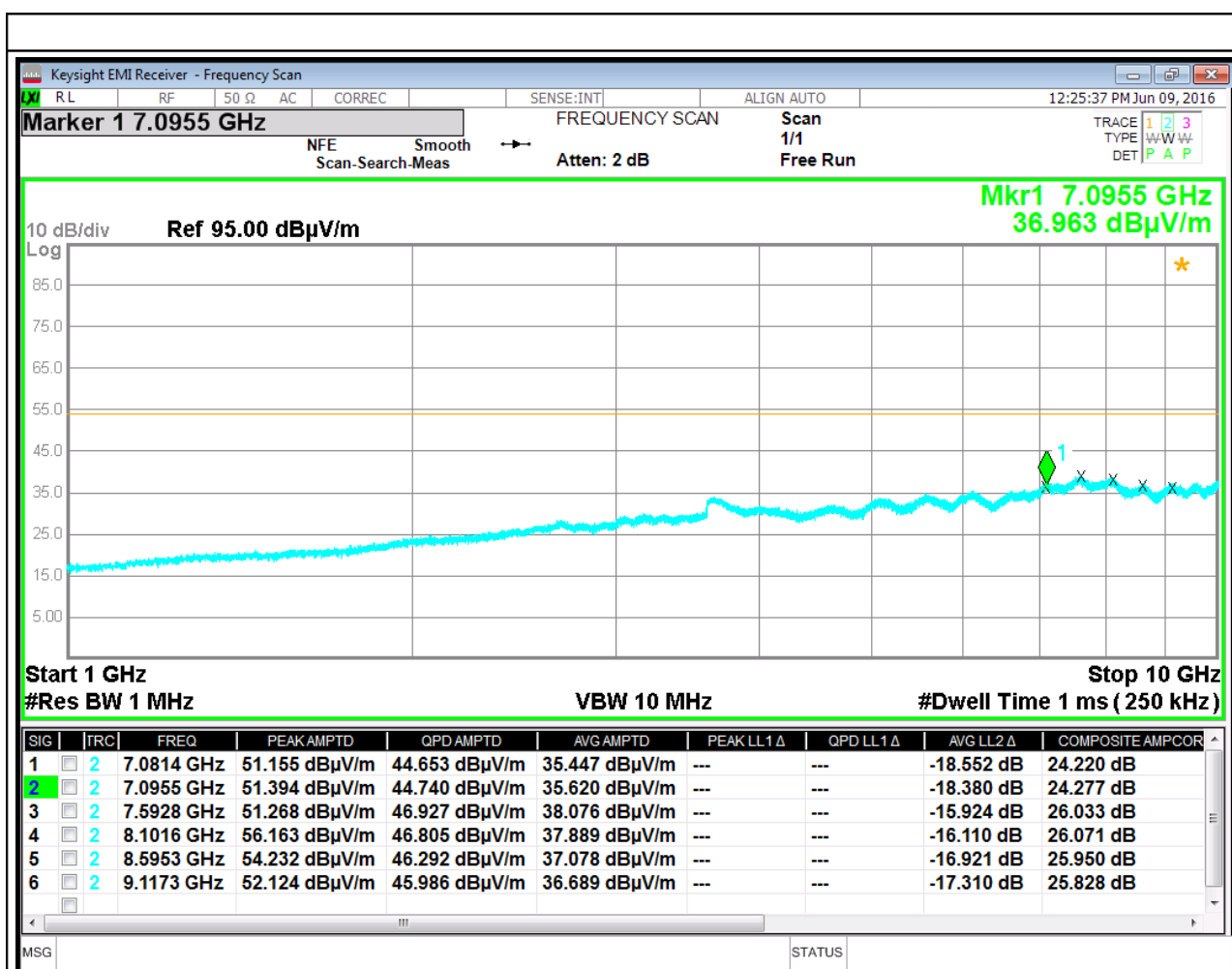


Fig. 7.1

POL V
MA: 100 cm
TT: 0°
EUT mode: Modulation

*Record of the measurement of radiated emissions (AVG detector)
Maximum disturbance determined in the frequency range 1 – 10 GHz, Pol. V.*

This document may be only fully reproduced.

Every partial reproduction is only allowed after written approval released by G.S.D. S.r.l.

Report n. FCC-16601 Rev. 03, page 57 / 65

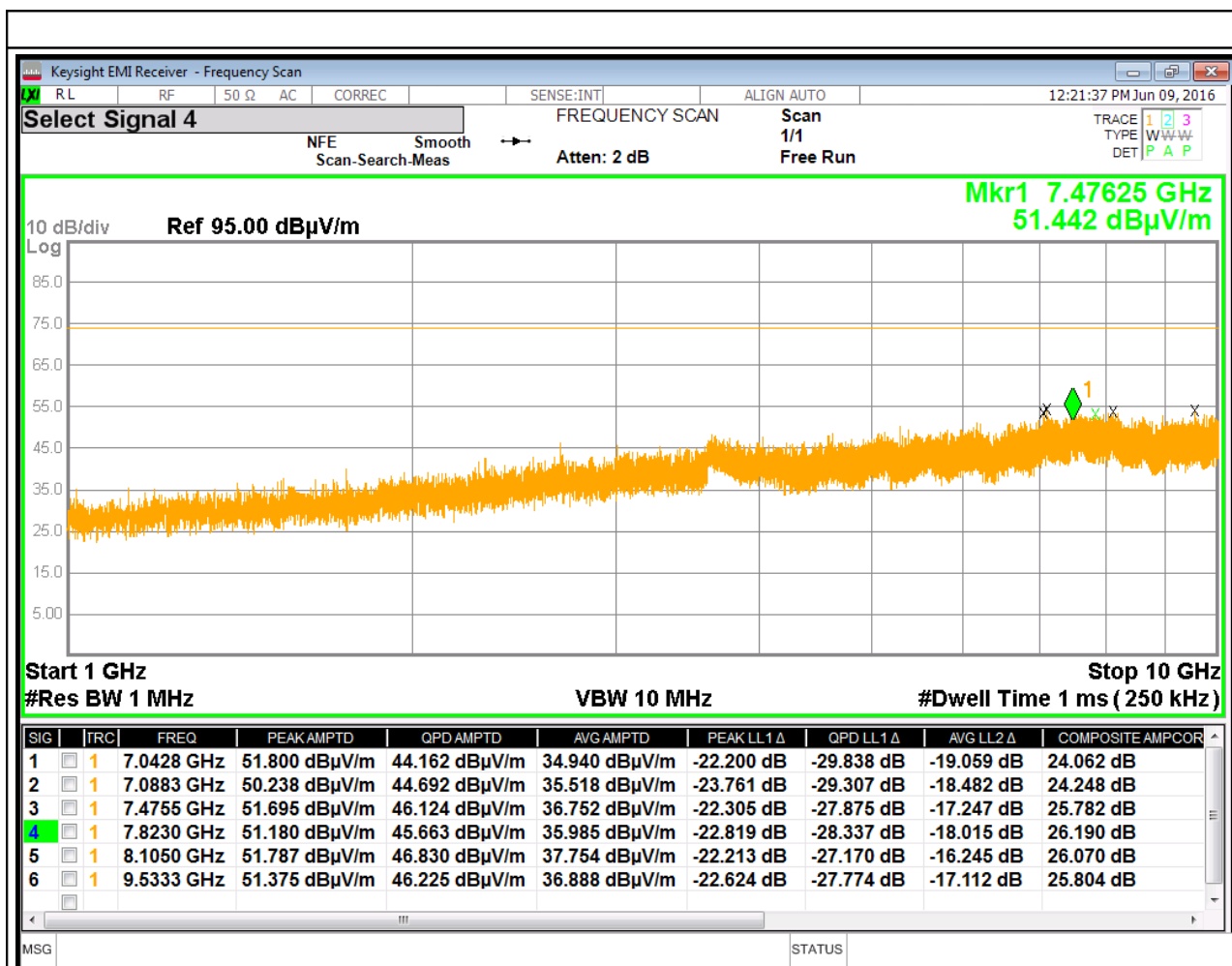


Fig. 7.2

POL V
MA: 100 cm
TT: 0°
EUT mode: Modulation

*Record of the measurement of radiated emissions (Peak detector)
Maximum disturbance determined in the frequency range 1 – 10 GHz, Pol. V.*

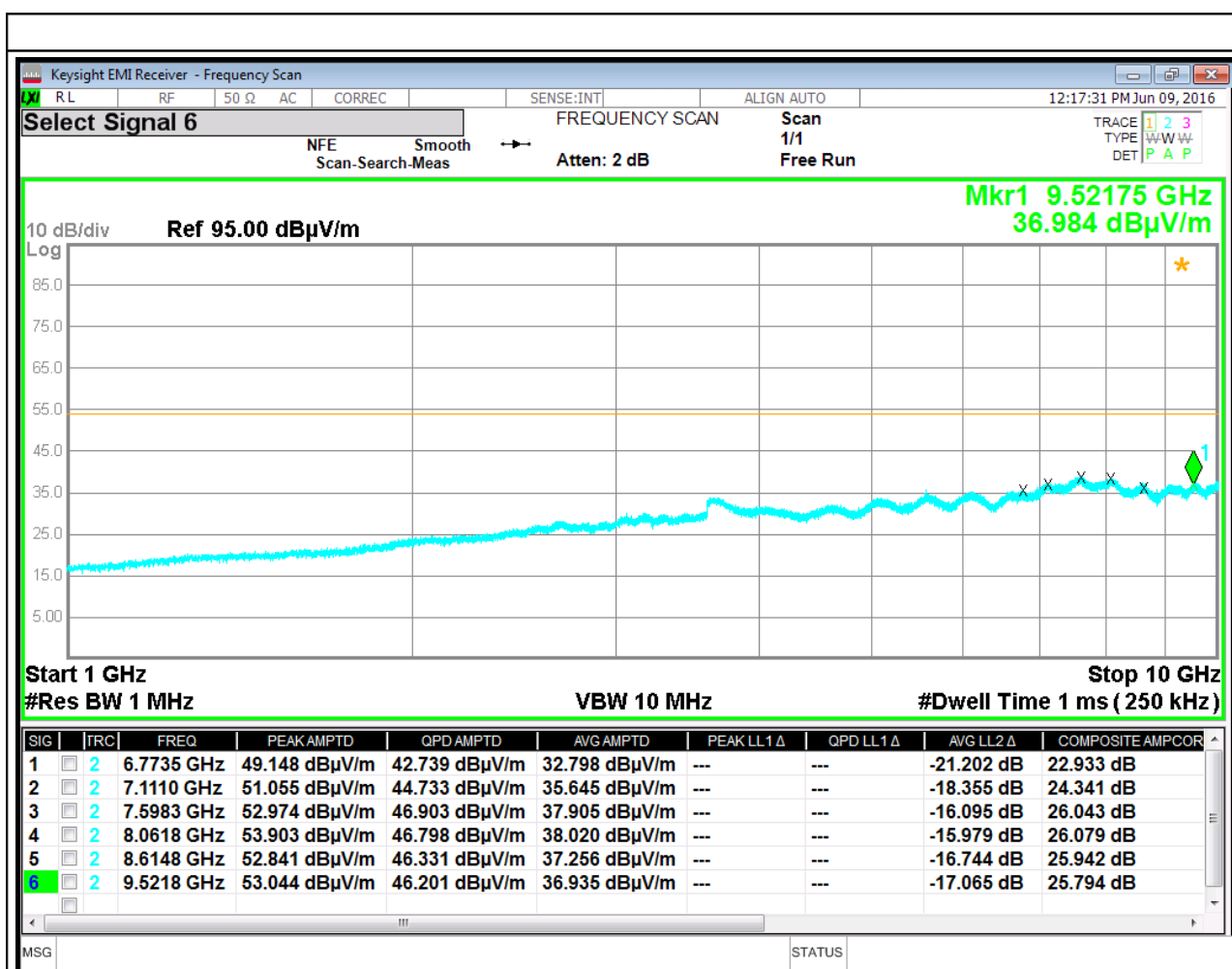


Fig. 7.3

POL H
MA: 100 cm
TT: 0°
EUT mode: Modulation

*Record of the measurement of radiated emissions (AVG detector)
Maximum disturbance determined in the frequency range 1 – 10 GHz, Pol. H.*

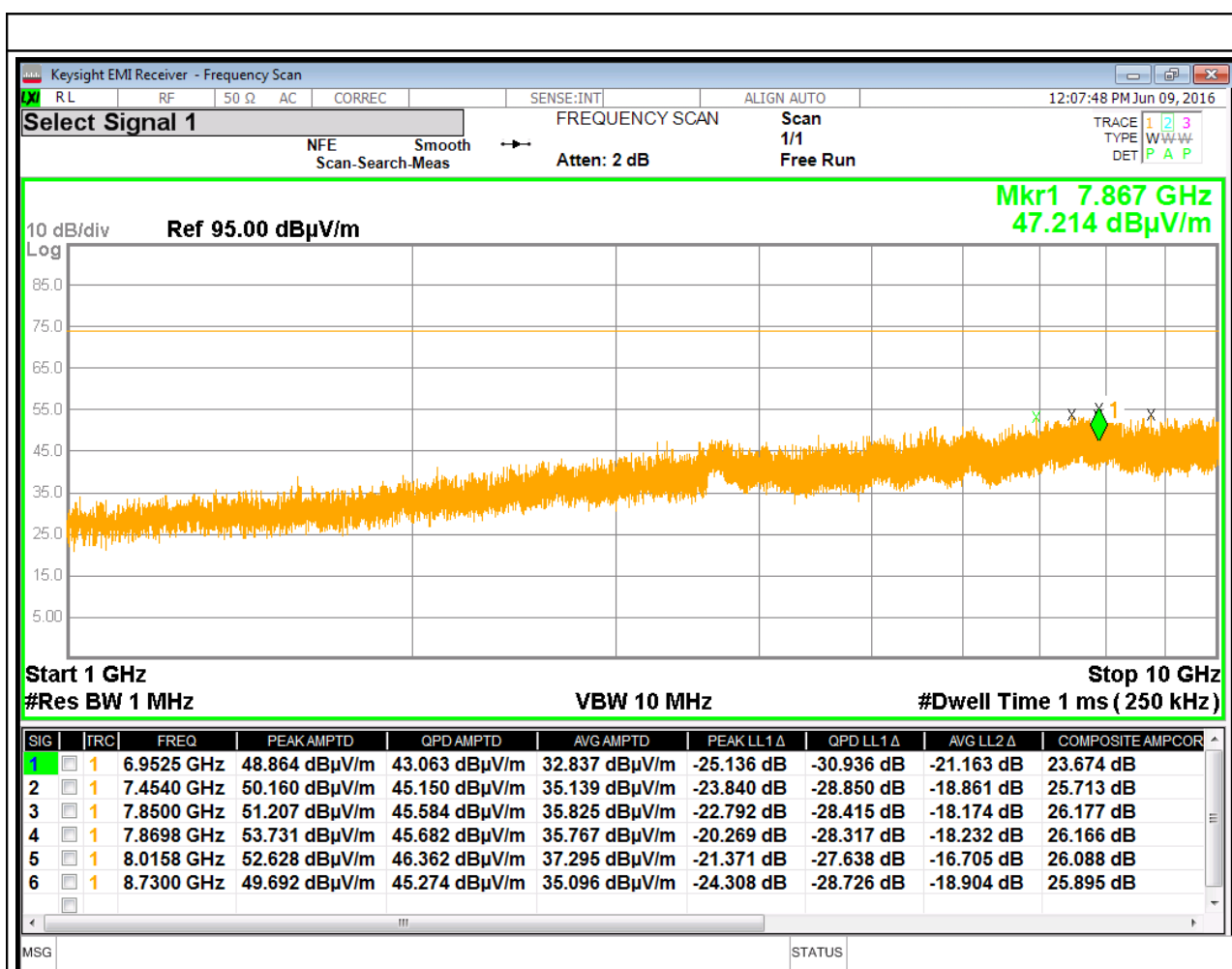


Fig. 7.4

POL H
MA: 100 cm
TT: 0°
EUT mode: Modulation

*Record of the measurement of radiated emissions (Peak detector)
Maximum disturbance determined in the frequency range 1 – 10 GHz, Pol. H.*

<u>Test Equipment</u>			
EQUIPMENT	MANUFACTURER	MODEL	CAL. DUE
MXE EMI Receiver	Agilent/Keysight	N9038A	01/2017
Anechoic Chamber	Comtest	CSA01	01/2017
Bilog Antenna	Schaffner	CBL6112B	01/2017
Horn Antenna	EMCO	3115	01/2017
Controller	Deisel	HD100	01/2017
Turn Table	Deisel	MA240	01/2017
LISN	GSD	NTW06	01/2017
<u>Test procedure:</u> CT15R01			

This document may be only fully reproduced.

Every partial reproduction is only allowed after written approval released by G.S.D. S.r.l.

Report n. FCC-16601 Rev. 03, page 61 / 65

8. PHOTO

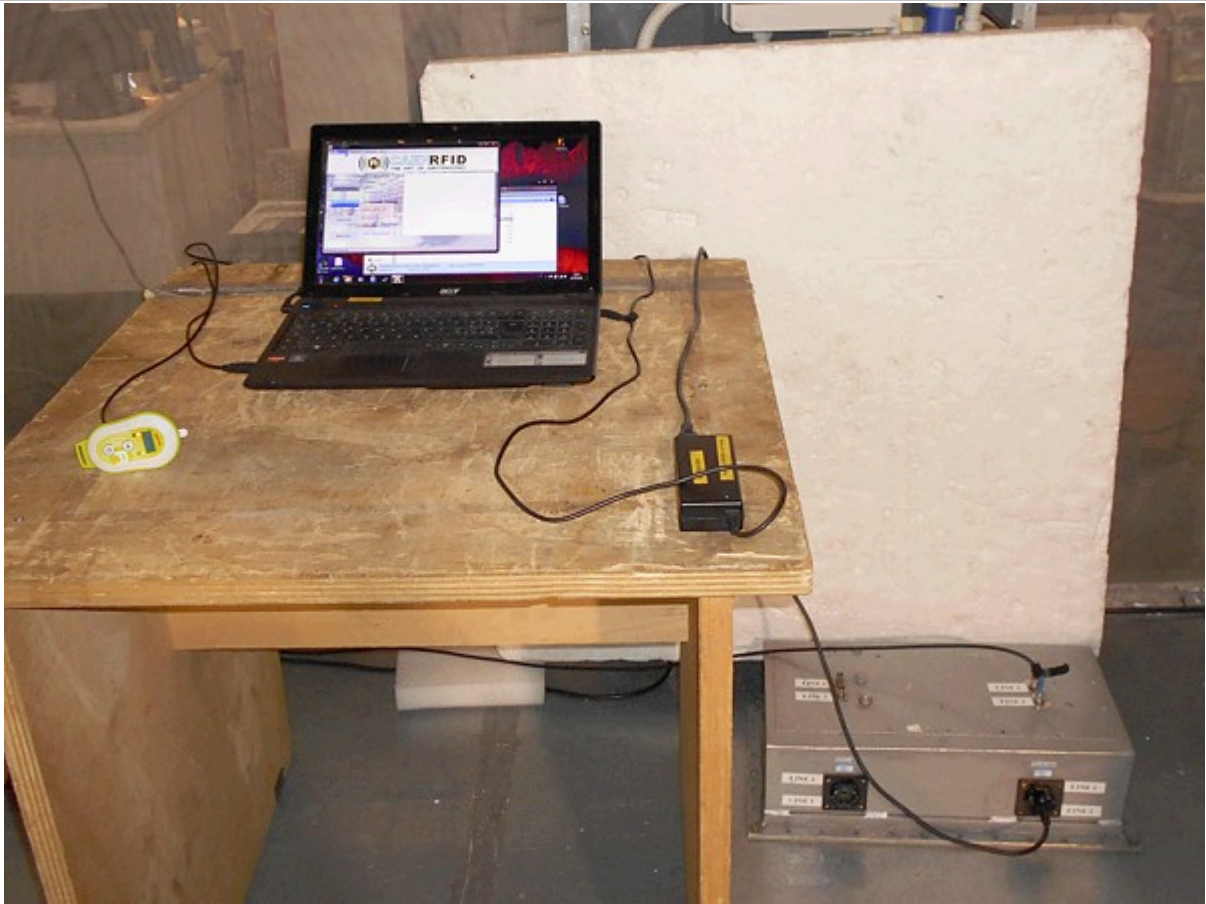


Fig. 8.1
Conducted Emissions Test Set-up

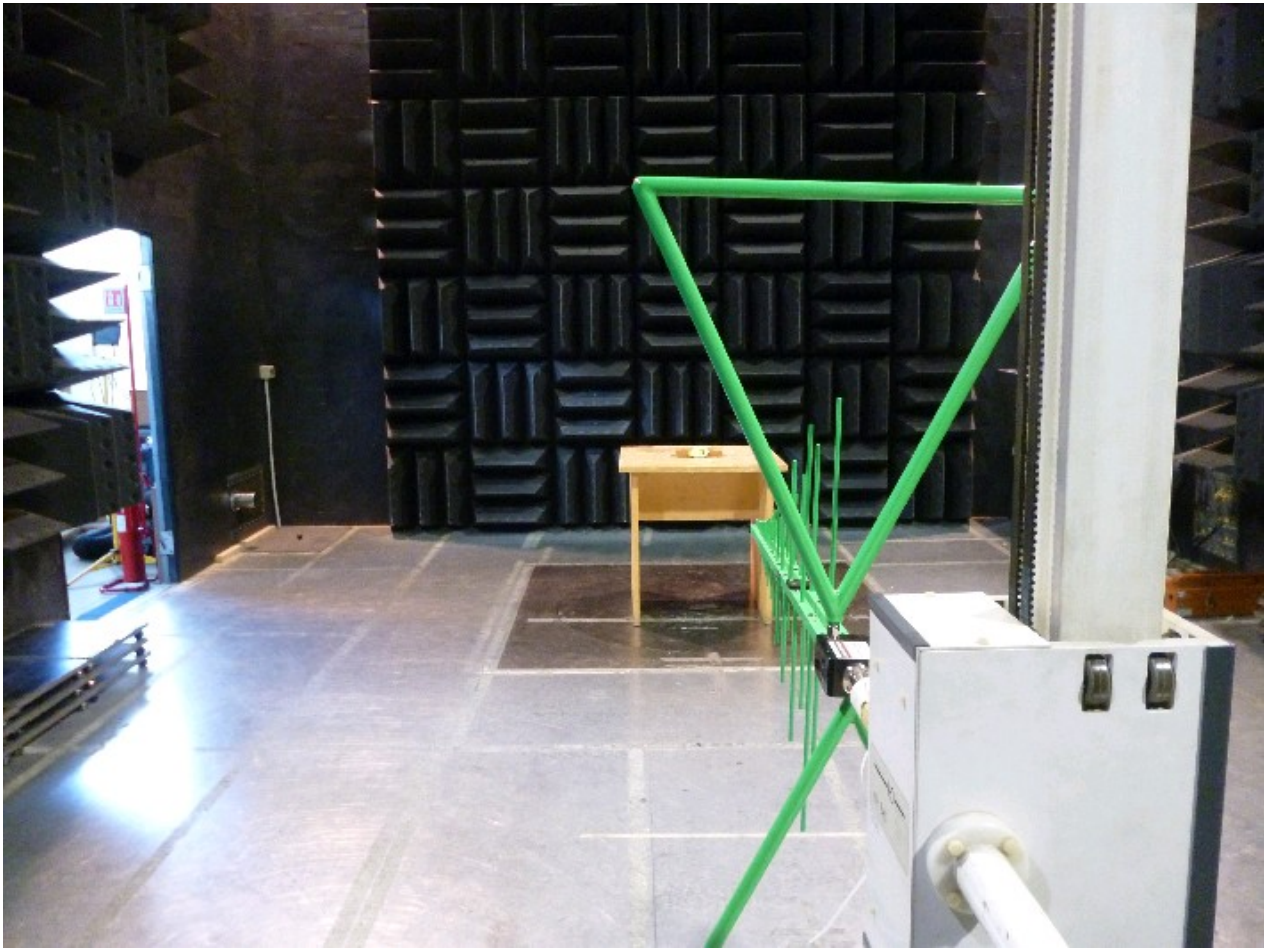


Fig. 8.2

*Radiated Emissions Test Set-up
Range: 30 – 1000 MHz*

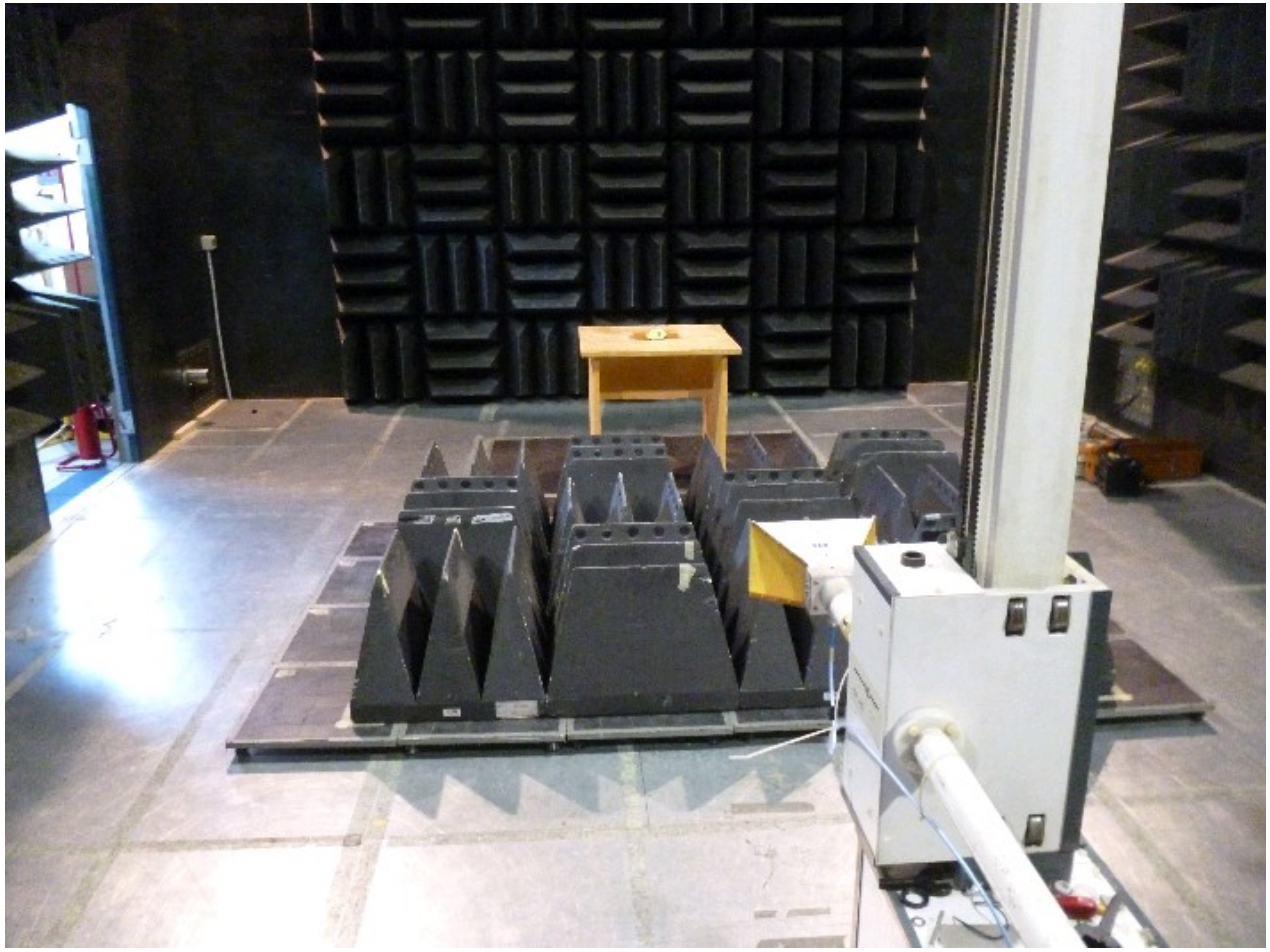


Fig. 8.3

*Radiated Emissions Test Set-up
Range: 1 – 10 GHz*



Fig. 8.4

*Radiated Emissions Test Set-up
Range: 9 kHz – 30 MHz*