
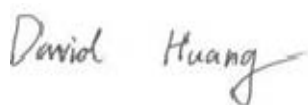



EMC TEST REPORT



Report No.: 16071058-FCC-E

Supersede Report No.:N/A

Applicant	Shenzhen Konka Telecommunications Technology Co.,Ltd.	
Product Name	Smart Phone	
Model No.	ADS1	
Serial No.	N/A	
Test Standard	FCC Part 15 Subpart B Class B:2015, ANSI C63.4: 2014	
Test Date	August 31 to September 26, 2016	
Issue Date	September 27, 2016	
Test Result	<input checked="" type="checkbox"/> Pass <input type="checkbox"/> Fail	
Equipment complied with the specification		<input checked="" type="checkbox"/>
Equipment did not comply with the specification		<input type="checkbox"/>
		
Loren Luo Test Engineer	David Huang Checked By	
This test report may be reproduced in full only Test result presented in this test report is applicable to the tested sample only		

Issued by:

SIEMIC (SHENZHEN-CHINA) LABORATORIES

Zone A, Floor 1, Building 2 Wan Ye Long Technology Park

South Side of Zhoushi Road, Bao' an District, Shenzhen, Guangdong China 518108

Phone: +86 0755 2601 4629801 Email: China@siemic.com.cn

Laboratories Introduction

SIEMIC, headquartered in the heart of Silicon Valley, with superior facilities in US and Asia, is one of the leading independent testing and certification facilities providing customers with one-stop shop services for Compliance Testing and Global Certifications.



In addition to testing and certification, SIEMIC provides initial design reviews and compliance management throughout a project. Our extensive experience with China, Asia Pacific, North America, European, and International compliance requirements, assures the fastest, most cost effective way to attain regulatory compliance for the global markets.

Accreditations for Conformity Assessment

Country/Region	Scope
USA	EMC, RF/Wireless, SAR, Telecom
Canada	EMC, RF/Wireless, SAR, Telecom
Taiwan	EMC, RF, Telecom, SAR, Safety
Hong Kong	RF/Wireless, SAR, Telecom
Australia	EMC, RF, Telecom, SAR, Safety
Korea	EMI, EMS, RF, SAR, Telecom, Safety
Japan	EMI, RF/Wireless, SAR, Telecom
Singapore	EMC, RF, SAR, Telecom
Europe	EMC, RF, SAR, Telecom, Safety

Test Report	16071058-FCC-E
Page	3 of 29

This page has been left blank intentionally.

CONTENTS

1. REPORT REVISION HISTORY	5
2. CUSTOMER INFORMATION	5
3. TEST SITE INFORMATION	5
4. EQUIPMENT UNDER TEST (EUT) INFORMATION	6
5. TEST SUMMARY	8
6. MEASUREMENTS, EXAMINATION AND DERIVED RESULTS	9
6.1 AC POWER LINE CONDUCTED EMISSIONS.....	9
6.2 RADIATED EMISSIONS.....	15
ANNEX A. TEST INSTRUMENT.....	20
ANNEX B. EUT AND TEST SETUP PHOTOGRAPHS.....	21
ANNEX C. TEST SETUP AND SUPPORTING EQUIPMENT.....	26
ANNEX D. USER MANUAL / BLOCK DIAGRAM / SCHEMATICS / PARTLIST	29

1. Report Revision History

Report No.	Report Version	Description	Issue Date
16071058-FCC-E	NONE	Original	September 27, 2016

2. Customer information

Applicant Name	Shenzhen Konka Telecommunications Technology Co.,Ltd.
Applicant Add	No.9008 Shennan Road,Overseas Chinese Town,ShenZhen,Guangdong,China
Manufacturer	Shenzhen Konka Telecommunications Technology Co.,Ltd.
Manufacturer Add	No.9008 Shennan Road,Overseas Chinese Town,ShenZhen,Guangdong,China

3. Test site information

Lab performing tests	SIEMIC (Shenzhen-China) LABORATORIES
Lab Address	Zone A, Floor 1, Building 2 Wan Ye Long Technology Park South Side of Zhoushi Road, Bao' an District, Shenzhen, Guangdong China 518108
FCC Test Site No.	718246
IC Test Site No.	4842E-1
Test Software	Radiated Emission Program-To Shenzhen v2.0

4. Equipment under Test (EUT) Information

Description of EUT:	Smart Phone
Main Model:	ADS1
Serial Model:	N/A
Antenna Gain:	GSM850: -0.20dBi PCS1900: 0.52dBi UMTS-FDD Band V: -0.20dBi UMTS-FDD Band II: 0.52dBi LTE Band 4: 0.51dBi Bluetooth/BLE/WIFI: -0.87dBi GPS: -0.87dBi
Antenna Type:	PIFA antenna
Input Power:	Adapter: Model: HJ-0502000W2-AR Input: AC 100-240V~50/60Hz,0.3A Output: DC 5.0V,2A Battery: Model: KLB245P354 Normal Voltage: 3.8V,2450mAh Charging Of Voltage: DC 4.5V,9.31Wh
Equipment Category :	Class B
Type of Modulation:	GSM / GPRS: GMSK EGPRS: GMSK,8PSK UMTS-FDD: QPSK LTE Band: QPSK, 16QAM 802.11b/g/n: DSSS, OFDM Bluetooth: GFSK, π /4DQPSK, 8DPSK BLE: GFSK GPS:BPSK

Test Report	16071058-FCC-E
Page	7 of 29

	GSM850 TX: 824.2 ~ 848.8 MHz; RX: 869.2 ~ 893.8 MHz
	PCS1900 TX: 1850.2 ~ 1909.8 MHz; RX: 1930.2 ~ 1989.8 MHz
	UMTS-FDD Band V TX: 826.4 ~ 846.6 MHz; RX: 871.4 ~ 891.6 MHz
	UMTS-FDD Band II TX:1852.4 ~ 1907.6 MHz;
	RX: 1932.4 ~ 1987.6 MHz
RF Operating Frequency (ies):	LTE Band 4 TX: 1710.7 ~ 1754.3 MHz; RX : 2110.7 ~ 2154.3 MHz
	WIFI: 802.11b/g/n(20M): 2412-2462 MHz
	WIFI: 802.11n(40M): 2422-2452 MHz
	Bluetooth& BLE: 2402-2480 MHz
	GPS: 1575.42 MHz
	GSM 850: 124CH
	PCS1900: 299CH
	UMTS-FDD Band V: 102CH
	UMTS-FDD Band II: 277CH
Number of Channels:	WIFI :802.11b/g/n(20M): 11CH
	WIFI :802.11n(40M): 7CH
	Bluetooth: 79CH
	BLE: 40CH
	GPS:1CH
Port:	Earphone Port, USB Port
Trade Name :	ADMIRAL
FCC ID:	UT3ADS1
Date EUT received:	August 29, 2016
Test Date(s):	August 31 to September 26, 2016

5. Test Summary

The product was tested in accordance with the following specifications.

All testing has been performed according to below product classification:

FCC Rules	Description of Test	Result
§15.107; ANSI C63.4: 2014	AC Power Line Conducted Emissions	Compliance
§15.109; ANSI C63.4: 2014	Radiated Emissions	Compliance

Measurement Uncertainty

Emissions		
Test Item	Description	Uncertainty
Band Edge and Radiated Spurious Emissions	Confidence level of approximately 95% (in the case where distributions are normal), with a coverage factor of 2 (for EUTs < 0.5m X 0.5m X 0.5m)	+5.6dB/-4.5dB
-	-	-

6. Measurements, Examination And Derived Results

6.1 AC Power Line Conducted Emissions

Temperature	23°C
Relative Humidity	55%
Atmospheric Pressure	1031mbar
Test date :	August 31, 2016
Tested By :	Loren Luo

Requirement(s):

Spec	Item	Requirement	Applicable														
47CFR§15.107	a)	For Low-power radio-frequency devices that is designed to be connected to the public utility (AC) power line, the radio frequency voltage that is conducted back onto the AC power line on any frequency or frequencies, within the band 150 kHz to 30 MHz, shall not exceed the limits in the following table, as measured using a 50 [mu] H/50 ohms line impedance stabilization network (LISN). The lower limit applies at the boundary between the frequencies ranges.															
		<table><tr><th rowspan="2">Frequency ranges (MHz)</th><th colspan="2">Limit (dBµV)</th></tr><tr><th>QP</th><th>Average</th></tr><tr><td>0.15 ~ 0.5</td><td>66 – 56</td><td>56 – 46</td></tr><tr><td>0.5 ~ 5</td><td>56</td><td>46</td></tr><tr><td>5 ~ 30</td><td>60</td><td>50</td></tr></table>	Frequency ranges (MHz)	Limit (dBµV)		QP	Average	0.15 ~ 0.5	66 – 56	56 – 46	0.5 ~ 5	56	46	5 ~ 30	60	50	
Frequency ranges (MHz)	Limit (dBµV)																
	QP	Average															
0.15 ~ 0.5	66 – 56	56 – 46															
0.5 ~ 5	56	46															
5 ~ 30	60	50															

Test Setup	 <p>Note: 1.Support units were connected to second LISN. 2.Both of LISNs (AMN) are 80cm from EUT and at least 80cm from other units and other metal planes support units.</p>
------------	---

Procedure	<ol style="list-style-type: none"> The EUT and supporting equipment were set up in accordance with the requirements of the standard on top of a 1.5m x 1m x 0.8m high, non-metallic table. The power supply for the EUT was fed through a 50Ω /50mH EUT LISN, connected to filtered mains.
-----------	--

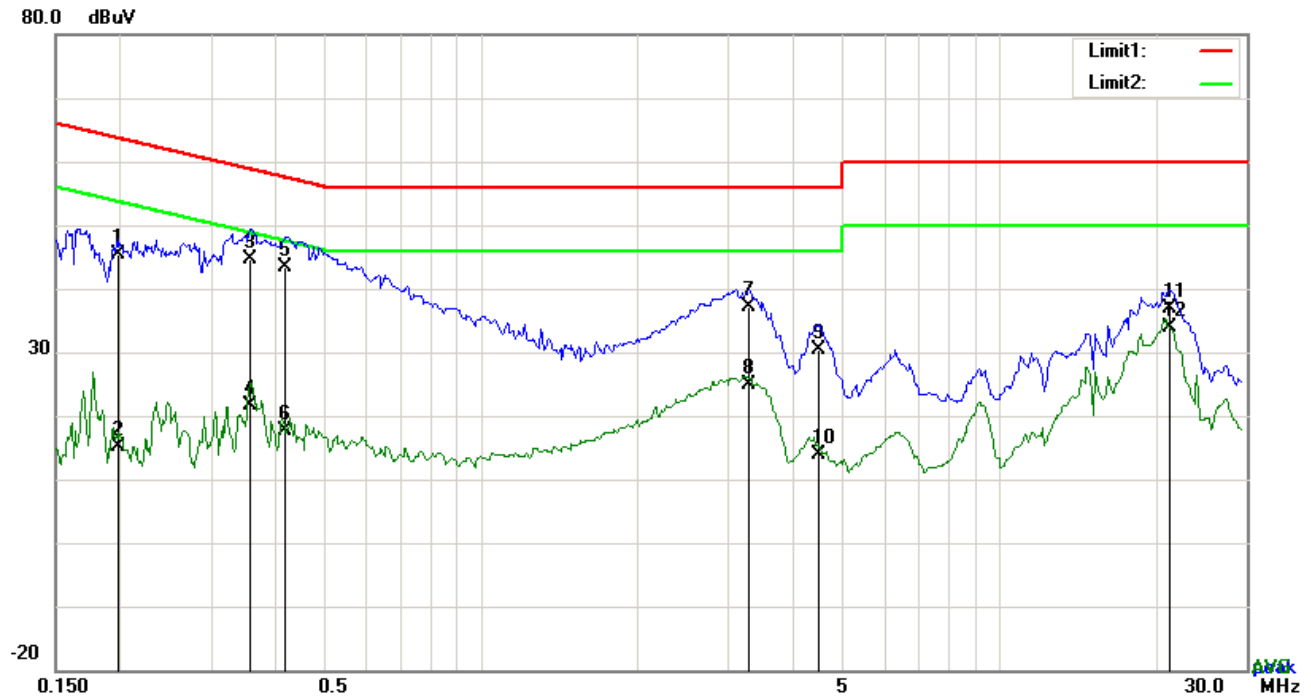
Test Report	16071058-FCC-E
Page	10 of 29

	<p>3. The RF OUT of the EUT LISN was connected to the EMI test receiver via a low-loss coaxial cable.</p> <p>4. All other supporting equipment were powered separately from another main supply.</p> <p>5. The EUT was switched on and allowed to warm up to its normal operating condition.</p> <p>6. A scan was made on the NEUTRAL line (for AC mains) or Earth line (for DC power) over the required frequency range using an EMI test receiver.</p> <p>7. High peaks, relative to the limit line, The EMI test receiver was then tuned to the selected frequencies and the necessary measurements made with a receiver bandwidth setting of 10 kHz.</p> <p>8. Step 7 was then repeated for the LIVE line (for AC mains) or DC line (for DC power).</p>
Remark	
Result	<input checked="" type="checkbox"/> Pass <input type="checkbox"/> Fail

Test Data ☒ Yes ☐ N/A

Test Plot ☒ Yes (See below) ☐ N/A

Test Mode : USB Mode

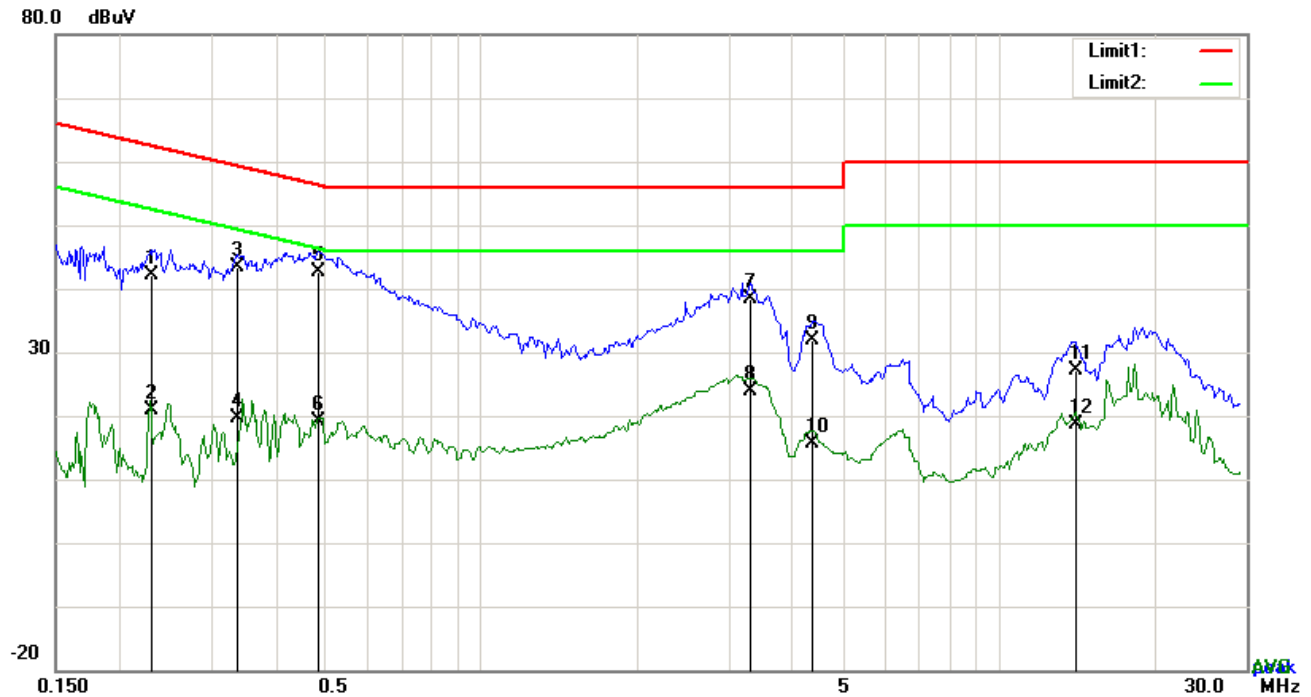


Test Data

Phase Line Plot at 120Vac, 60Hz

No.	P/L	Frequency	Reading	Detector	Corrected	Result	Limit	Margin
		(MHz)	(dBuV)		(dB)	(dBuV)	(dBuV)	(dB)
1	L1	0.1976	35.39	QP	10.03	45.42	63.71	-18.29
2	L1	0.1976	5.16	AVG	10.03	15.19	53.71	-38.52
3	L1	0.3567	34.53	QP	10.03	44.56	58.80	-14.24
4	L1	0.3567	11.64	AVG	10.03	21.67	48.80	-27.13
5	L1	0.4191	33.34	QP	10.03	43.37	57.47	-14.10
6	L1	0.4191	7.61	AVG	10.03	17.64	47.47	-29.83
7	L1	3.2769	27.07	QP	10.06	37.13	56.00	-18.87
8	L1	3.2769	14.92	AVG	10.06	24.98	46.00	-21.02
9	L1	4.4976	20.30	QP	10.07	30.37	56.00	-25.63
10	L1	4.4976	3.93	AVG	10.07	14.00	46.00	-32.00
11	L1	21.3417	26.53	QP	10.33	36.86	60.00	-23.14
12	L1	21.3417	23.63	AVG	10.33	33.96	50.00	-16.04

Test Mode : USB Mode

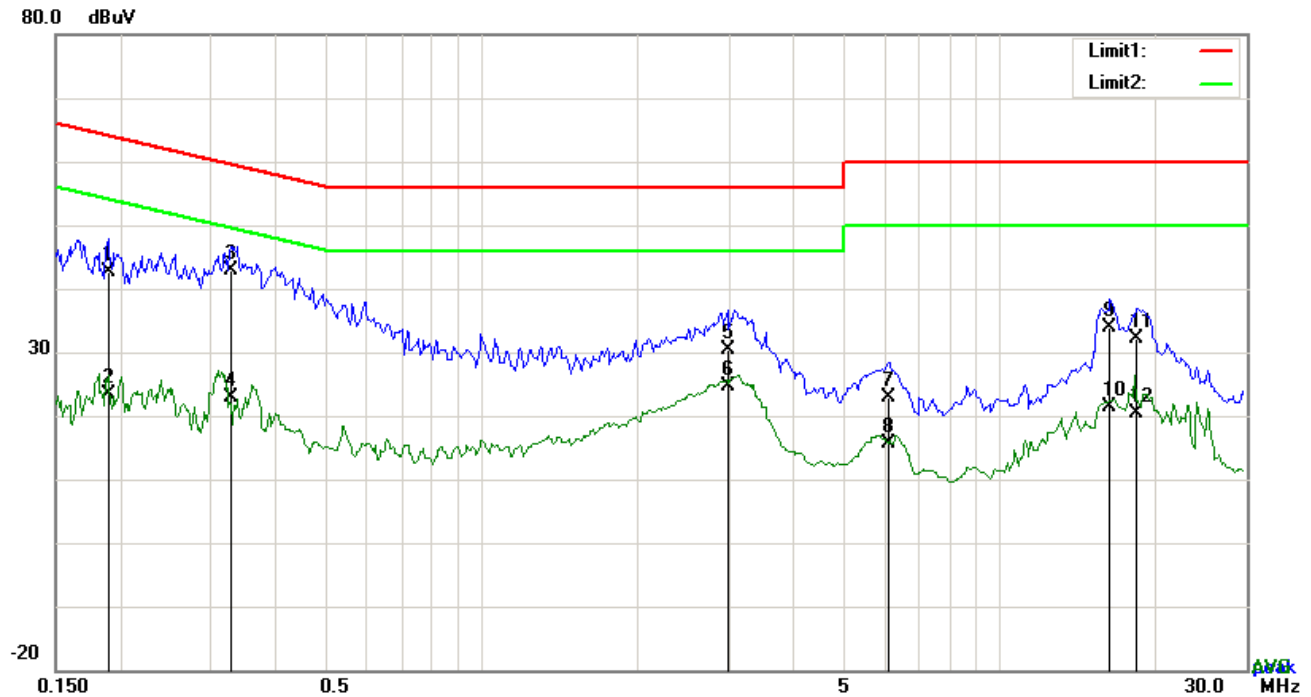


Test Data

Phase Neutral Plot at 120Vac, 60Hz

No.	P/L	Frequency	Reading	Detector	Corrected	Result	Limit	Margin
		(MHz)	(dBuV)		(dB)	(dBuV)	(dBuV)	(dB)
1	N	0.2292	32.19	QP	10.02	42.21	62.48	-20.27
2	N	0.2292	10.83	AVG	10.02	20.85	52.48	-31.63
3	N	0.3374	33.48	QP	10.02	43.50	59.27	-15.77
4	N	0.3374	9.59	AVG	10.02	19.61	49.27	-29.66
5	N	0.4815	32.51	QP	10.02	42.53	56.31	-13.78
6	N	0.4815	9.04	AVG	10.02	19.06	46.31	-27.25
7	N	3.2964	28.36	QP	10.05	38.41	56.00	-17.59
8	N	3.2964	13.88	AVG	10.05	23.93	46.00	-22.07
9	N	4.3377	21.71	QP	10.06	31.77	56.00	-24.23
10	N	4.3377	5.60	AVG	10.06	15.66	46.00	-30.34
11	N	14.0448	17.01	QP	10.19	27.20	60.00	-32.80
12	N	14.0448	8.45	AVG	10.19	18.64	50.00	-31.36

Test Mode : USB Mode

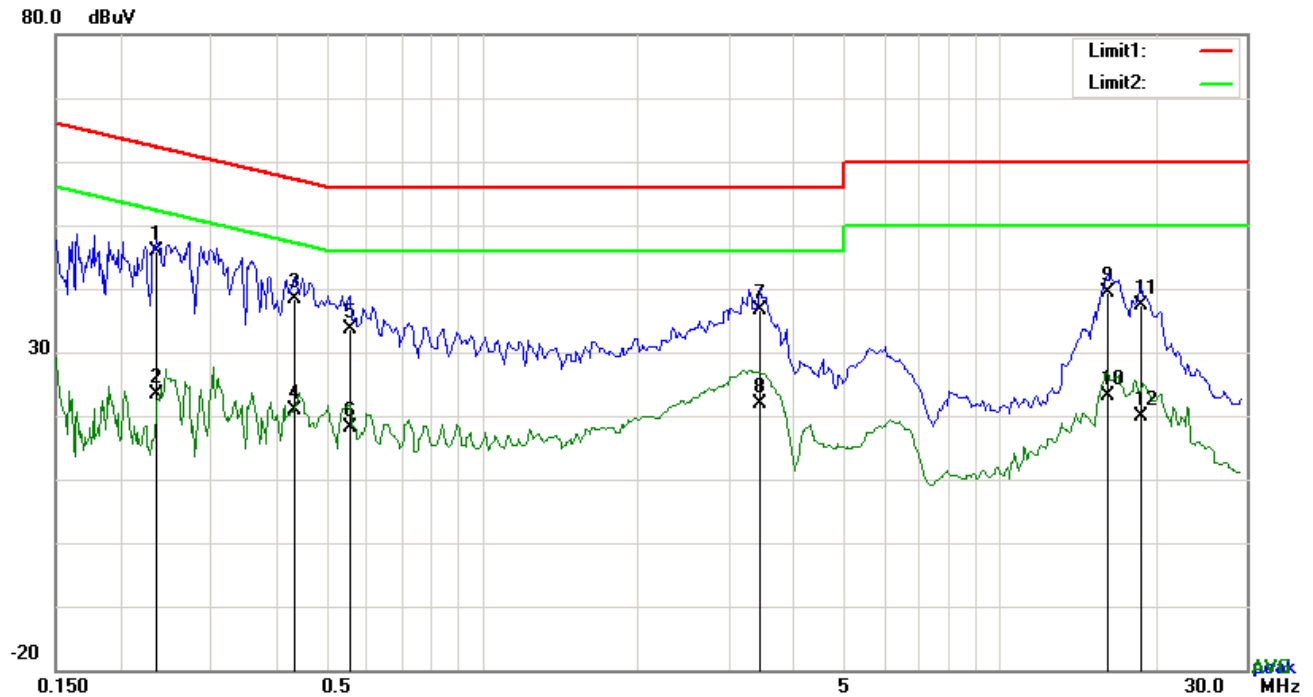


Test Data

Phase Line Plot at 240Vac, 60Hz

No.	P/L	Frequency	Reading	Detector	Corrected	Result	Limit	Margin
		(MHz)	(dBuV)		(dB}	(dBuV)	(dBuV)	(dB)
1	L1	0.1894	32.58	QP	10.03	42.61	64.06	-21.45
2	L1	0.1894	13.25	AVG	10.03	23.28	54.06	-30.78
3	L1	0.3268	32.89	QP	10.03	42.92	59.53	-16.61
4	L1	0.3268	12.93	AVG	10.03	22.96	49.53	-26.57
5	L1	2.9814	20.40	QP	10.05	30.45	56.00	-25.55
6	L1	2.9814	14.70	AVG	10.05	24.75	46.00	-21.25
7	L1	6.1122	12.77	QP	10.10	22.87	60.00	-37.13
8	L1	6.1122	5.54	AVG	10.10	15.64	50.00	-34.36
9	L1	16.3731	23.64	QP	10.25	33.89	60.00	-26.11
10	L1	16.3731	11.05	AVG	10.25	21.30	50.00	-28.70
11	L1	18.4245	21.77	QP	10.28	32.05	60.00	-27.95
12	L1	18.4245	10.10	AVG	10.28	20.38	50.00	-29.62

Test Mode : USB Mode



Test Data


Phase Neutral Plot at 240Vac, 60Hz

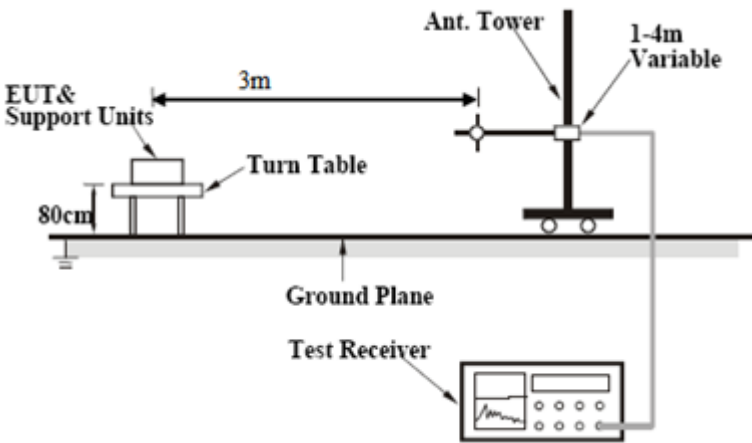
No.	P/L	Frequency	Reading	Detector	Corrected	Result	Limit	Margin
		(MHz)	(dBuV)		(dB)	(dBuV)	(dBuV)	(dB)
1	N	0.2341	35.88	QP	10.02	45.90	62.30	-16.40
2	N	0.2341	13.45	AVG	10.02	23.47	52.30	-28.83
3	N	0.4347	28.42	QP	10.02	38.44	57.16	-18.72
4	N	0.4347	10.87	AVG	10.02	20.89	47.16	-26.27
5	N	0.5556	23.50	QP	10.02	33.52	56.00	-22.48
6	N	0.5556	8.08	AVG	10.02	18.10	46.00	-27.90
7	N	3.4485	26.46	QP	10.05	36.51	56.00	-19.49
8	N	3.4485	11.93	AVG	10.05	21.98	46.00	-24.02
9	N	16.1781	29.19	QP	10.21	39.40	60.00	-20.60
10	N	16.1781	12.96	AVG	10.21	23.17	50.00	-26.83
11	N	18.8028	27.02	QP	10.25	37.27	60.00	-22.73
12	N	18.8028	9.51	AVG	10.25	19.76	50.00	-30.24

6.2 Radiated Emissions

Temperature	23°C
Relative Humidity	55%
Atmospheric Pressure	1031mbar
Test date :	August 31, 2016
Tested By :	Loren Luo

Requirement(s):

Spec	Item	Requirement	Applicable	
47CFR§15.109(d)	a)	Except higher limit as specified elsewhere in other section, the emissions from the low-power radio-frequency devices shall not exceed the field strength levels specified in the following table and the level of any unwanted emissions shall not exceed the level of the fundamental emission. The tighter limit applies at the band edges		
		Frequency range (MHz)		Field Strength (µV/m)
		30 – 88		100
		88 – 216		150
		216 960		200
		Above 960		500

Test Setup	
------------	--

Procedure	<ol style="list-style-type: none"> The EUT was switched on and allowed to warm up to its normal operating condition. The test was carried out at the selected frequency points obtained from the EUT characterization. Maximization of the emissions, was carried out by rotating the EUT, changing the antenna polarization, and adjusting the antenna height in the following manner: <ol style="list-style-type: none"> Vertical or horizontal polarization (whichever gave the higher emission level
-----------	--

Test Report	16071058-FCC-E
Page	16 of 29

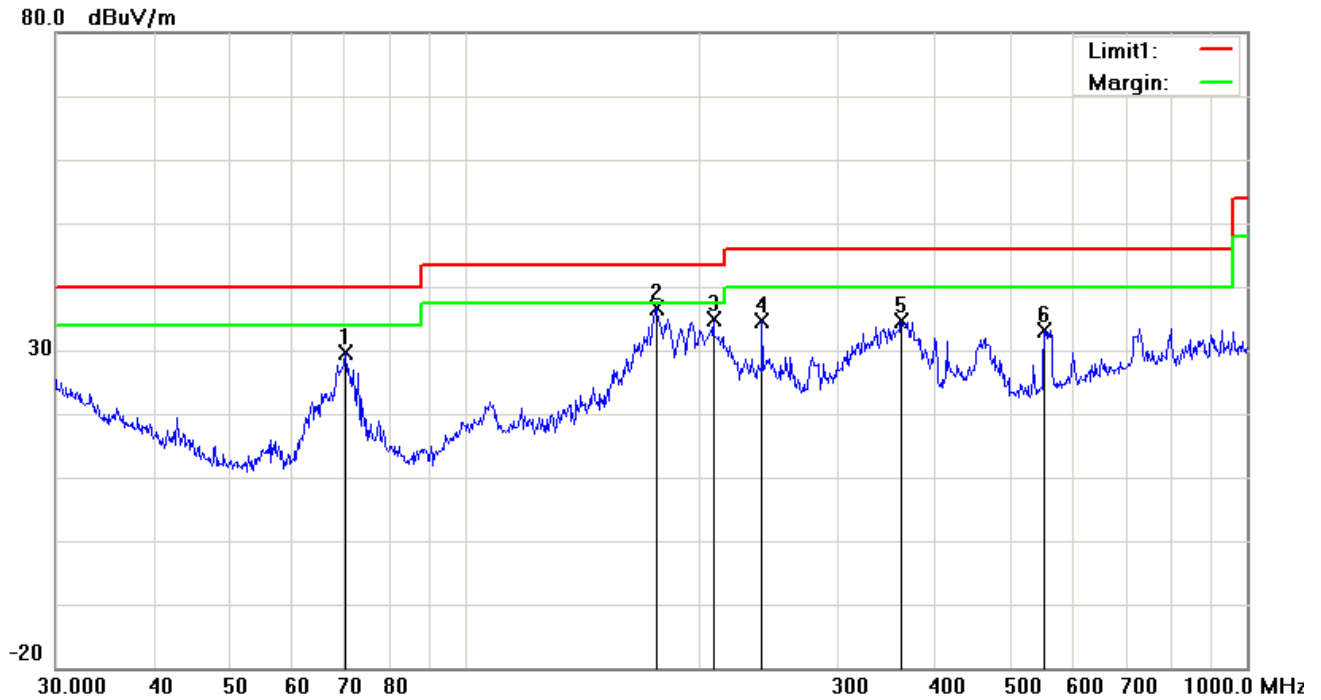
	<p>over a full rotation of the EUT) was chosen.</p> <p>b. The EUT was then rotated to the direction that gave the maximum emission.</p> <p>c. Finally, the antenna height was adjusted to the height that gave the maximum emission.</p> <p>3. The resolution bandwidth and video bandwidth of test receiver/spectrum analyzer is 120 kHz for Quasi Peak detection at frequency below 1GHz.</p> <p>4. The resolution bandwidth of test receiver/spectrum analyzer is 1MHz and video bandwidth is 3MHz with Peak detection for Peak measurement at frequency above 1GHz.</p> <p>The resolution bandwidth of test receiver/spectrum analyzer is 1MHz and the video bandwidth with Peak detection for Average Measurement as below at frequency above 1GHz.</p> <p>■ 1 kHz (Duty cycle < 98%) □ 10 Hz (Duty cycle > 98%)</p> <p>5. Steps 2 and 3 were repeated for the next frequency point, until all selected frequency points were measured.</p>
Remark	
Result	<input checked="" type="checkbox"/> Pass <input type="checkbox"/> Fail

Test Data ☒ Yes ☐ N/A

Test Plot ☒ Yes (See below) ☐ N/A

Test Mode : USB Mode

Below 1GHz

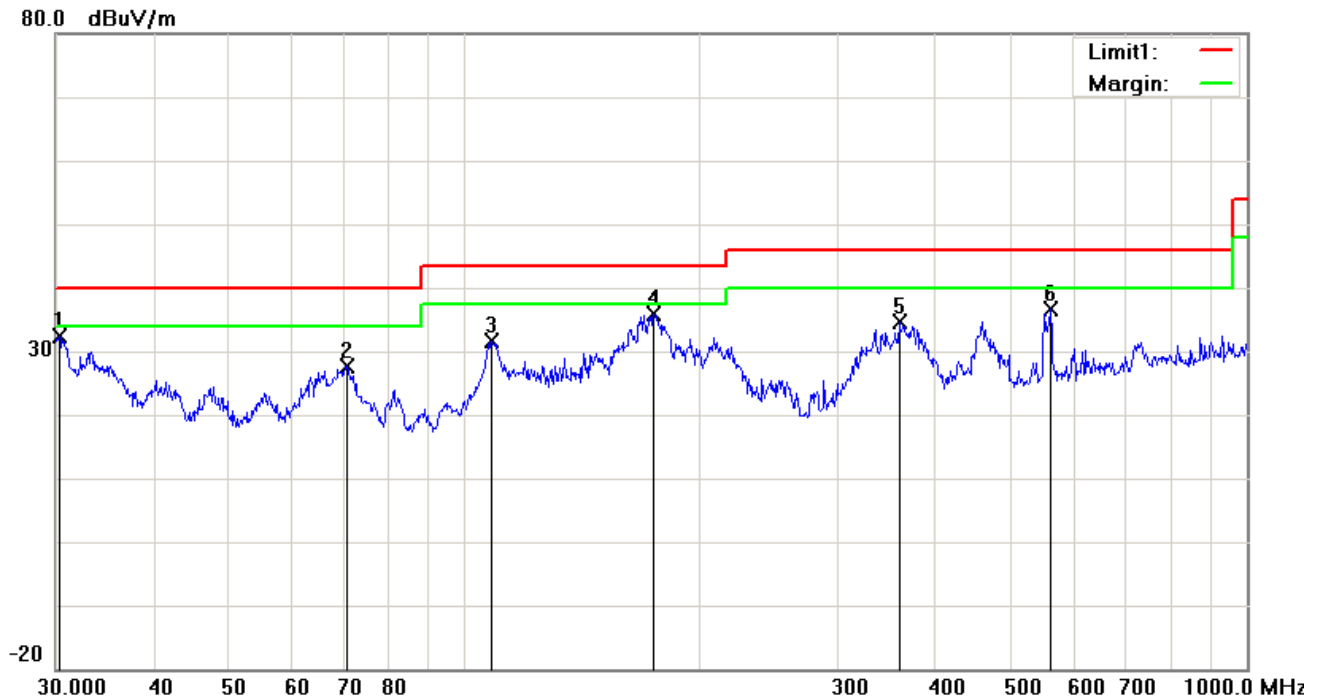


Test Data

Horizontal Polarity Plot @3m

No.	P/L	Frequency	Reading	Detector	Corrected	Result	Limit	Margin	Height	Degree
		(MHz)	(dBuV/m)		(dB/m)	(dBuV/m)	(dBuV/m)	(dB)	(cm)	(°)
1	H	70.3365	43.21	peak	-13.61	29.60	40.00	-10.40	100	48
2	H	175.6516	46.06	peak	-9.54	36.52	43.50	-6.98	100	26
3	H	207.8501	43.66	peak	-8.81	34.85	43.50	-8.65	100	134
4	H	239.9873	43.73	peak	-9.10	34.63	46.00	-11.37	100	105
5	H	361.7139	39.70	peak	-5.19	34.51	46.00	-11.49	100	97
6	H	550.9480	33.99	peak	-0.80	33.19	46.00	-12.81	100	238

Below 1GHz



Test Data

Vertical Polarity Plot @3m

No.	P/L	Frequency	Reading	Detector	Corrected	Result	Limit	Margin	Height	Degree
		(MHz)	(dBuV/m)		(dB/m)	(dBuV/m)	(dBuV/m)	(dB)	(cm)	(°)
1	V	30.3173	32.77	peak	-0.49	32.28	40.00	-7.72	100	64
2	V	70.5836	41.34	peak	-13.61	27.73	40.00	-12.27	100	30
3	V	108.2667	40.86	peak	-9.33	31.53	43.50	-11.97	100	19
4	V	174.4241	45.26	peak	-9.45	35.81	43.50	-7.69	100	120
5	V	359.1860	39.80	peak	-5.25	34.55	46.00	-11.45	100	186
6	V	560.6928	37.38	peak	-0.64	36.74	46.00	-9.26	100	258

Above 1GHz

Frequency (MHz)	Amplitude (dBμV/m)	Azimuth	Height (cm)	Polarity (H/V)	Factors (dB)	Limit (dBμV/m)	Margin (dB)	Detector (PK/AV)
1462.157	53.16	89	168	V	-24.02	74	-20.84	PK
2032.546	51.24	118	134	V	-21.12	74	-22.76	PK
2618.952	49.82	64	117	V	-23.08	74	-24.18	PK
2304.338	53.72	49	172	H	-23.53	74	-20.28	PK
2900.215	51.04	73	146	H	-22.86	74	-22.96	PK
1893.679	52.15	36	99	H	-24.45	74	-21.85	PK

Note1: The highest frequency of the EUT is 2480 MHz, so the testing has been conformed to $5 \times 2472 \text{ MHz} = 12,360 \text{ MHz}$.

Note2: The frequency that above 3GHz is mainly from the environment noise.

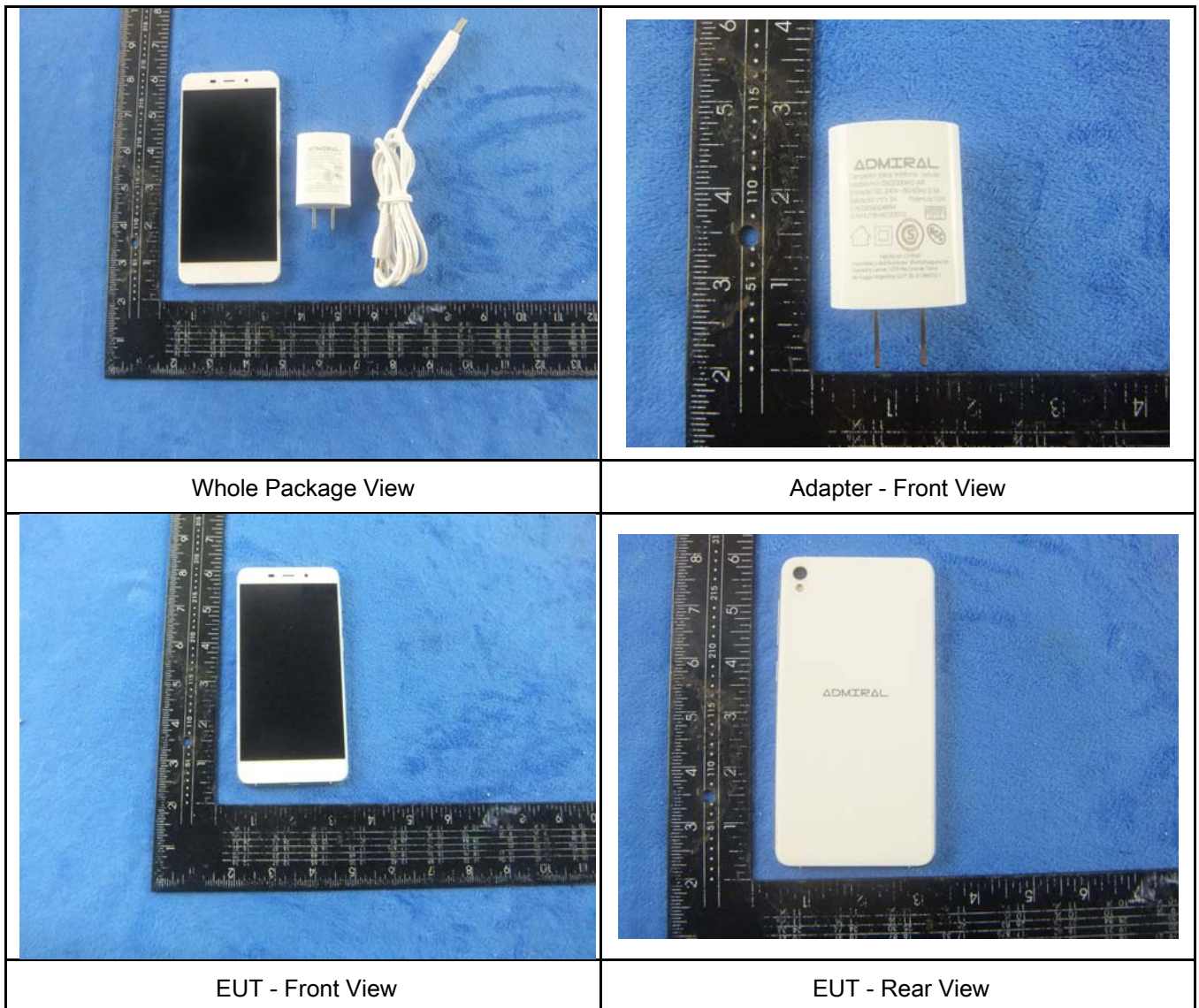
Note3: The AV measurement performed, more than 20dB below limit so AV test data was not presented.

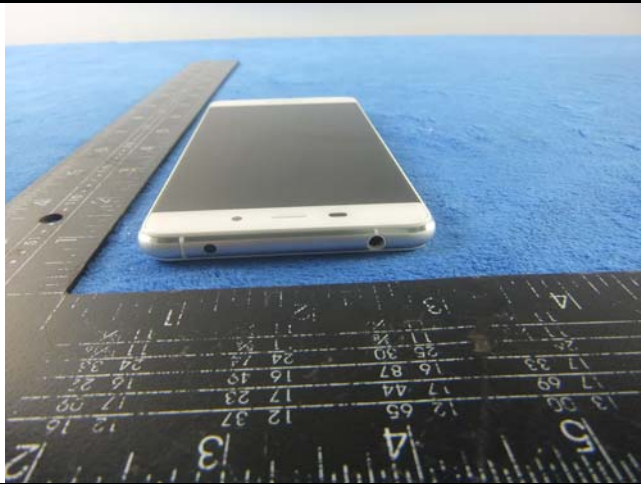
Annex A. TEST INSTRUMENT

Instrument	Model	Serial #	Cal Date	Cal Due	In use
AC Line Conducted Emissions					
EMI test receiver	ESCS30	8471241027	09/17/2015	09/16/2016	<input checked="" type="checkbox"/>
Line Impedance Stabilization Network	LI-125A	191106	09/25/2015	09/24/2016	<input checked="" type="checkbox"/>
Line Impedance Stabilization Network	LI-125A	191107	09/25/2015	09/24/2016	<input checked="" type="checkbox"/>
LISN	ISN T800	34373	09/25/2015	09/24/2016	<input checked="" type="checkbox"/>
Transient Limiter	LIT-153	531118	08/31/2016	08/30/2017	<input checked="" type="checkbox"/>
Radiated Emissions					
EMI test receiver	ESL6	100262	09/17/2015	09/16/2016	<input checked="" type="checkbox"/>
OPT 010 AMPLIFIER (0.1-1300MHz)	8447E	2727A02430	08/31/2016	08/30/2017	<input checked="" type="checkbox"/>
Microwave Preamplifier (1 ~ 26.5GHz)	8449B	3008A02402	03/24/2016	03/23/2017	<input checked="" type="checkbox"/>
Bilog Antenna (30MHz~6GHz)	JB6	A110712	09/21/2015	09/20/2016	<input checked="" type="checkbox"/>
Double Ridge Horn Antenna	AH-118	71259	09/24/2015	09/23/2016	<input checked="" type="checkbox"/>

Annex B. EUT And Test Setup Photographs

Annex B.i. Photograph: EUT External Photo

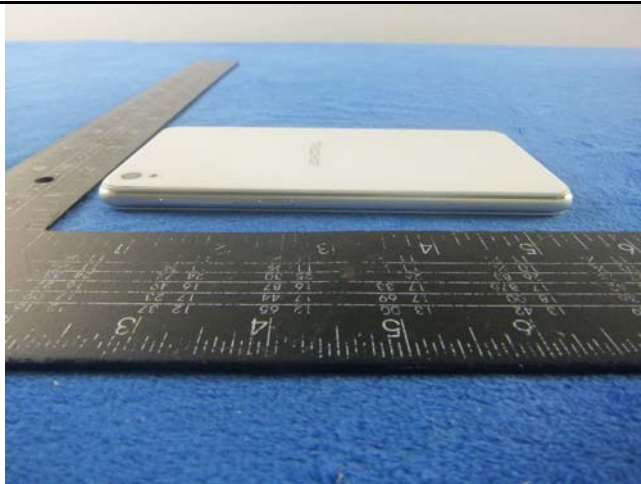




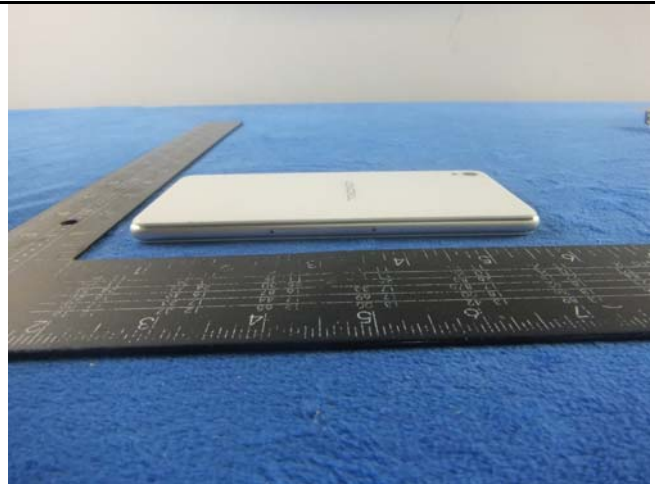
EUT - Top View



EUT - Bottom View



EUT - Left View



EUT - Right View

Annex B.ii. Photograph: EUT Internal Photo



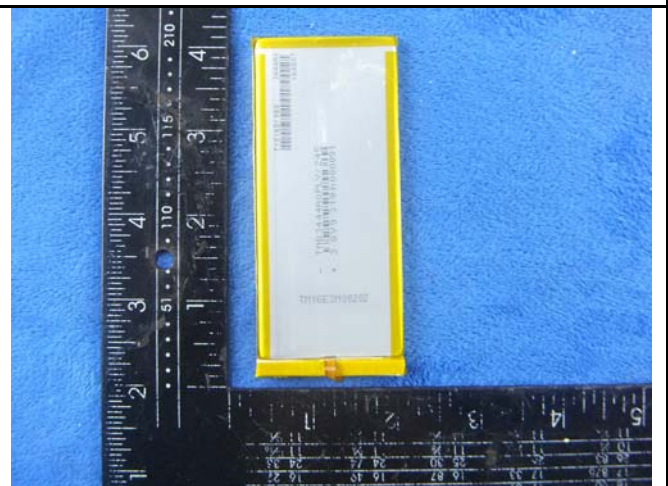
Cover Off - Top View 1



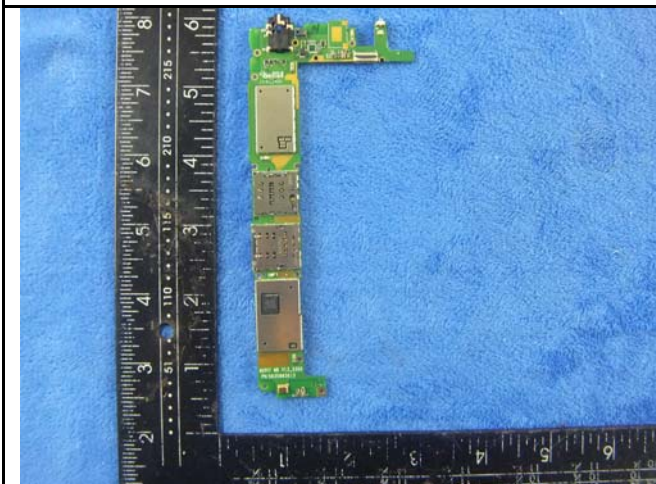
Cover Off - Top View 2



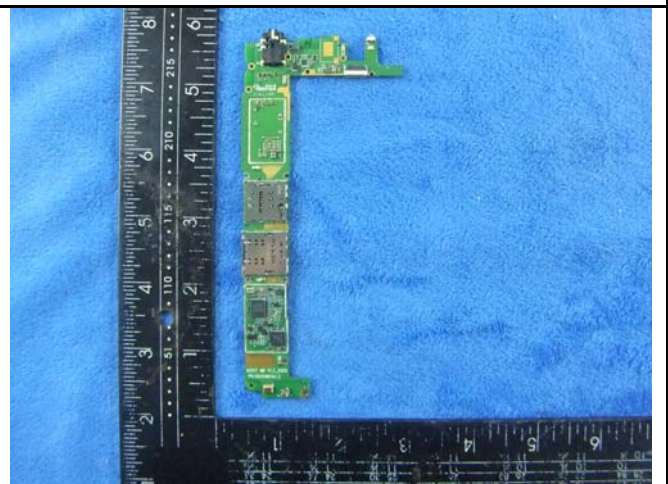
Battery - Front View



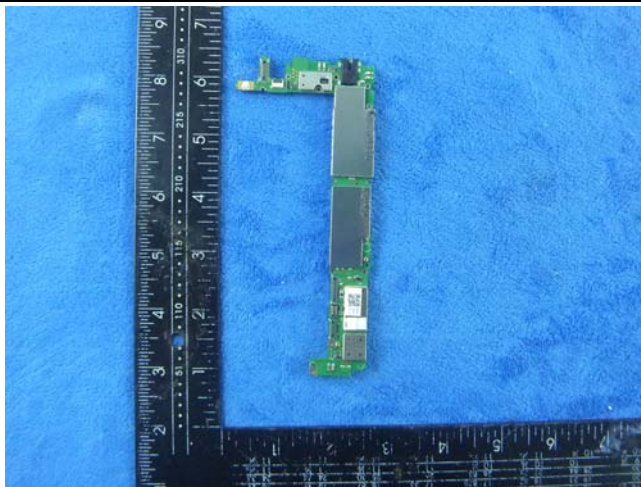
Battery - Rear View



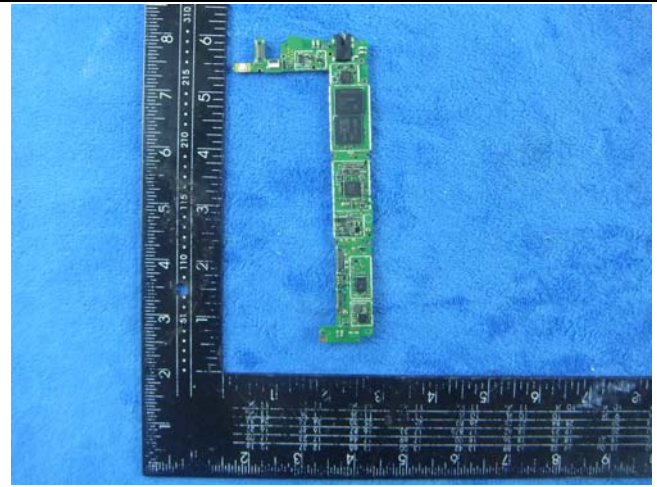
Mainboard with Shielding - Front View



Mainboard without Shielding - Front View



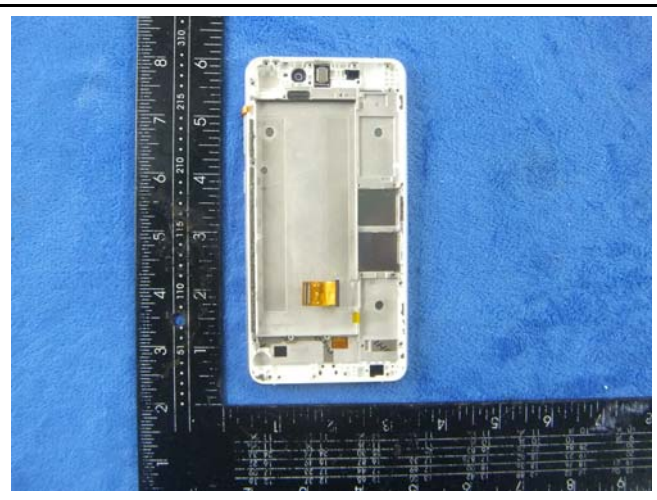
Mainboard with Shielding - Rear View



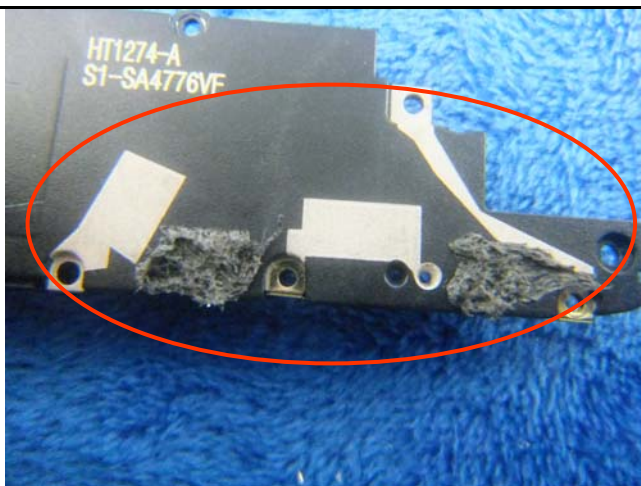
Mainboard without Shielding - Rear View



LCD - Front View



LCD - Rear View



GSM/PCS/UMTS-FDD/ LTE -Antenna View



WIFI/BT/BLE/GPS - Antenna View

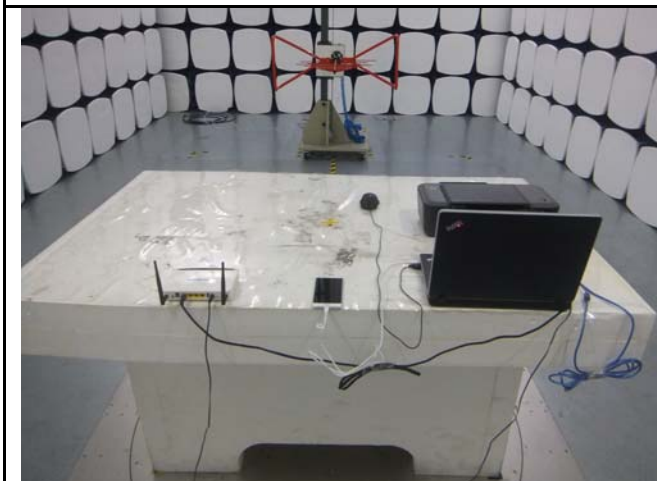
Annex B.iii. Photograph: Test Setup Photo



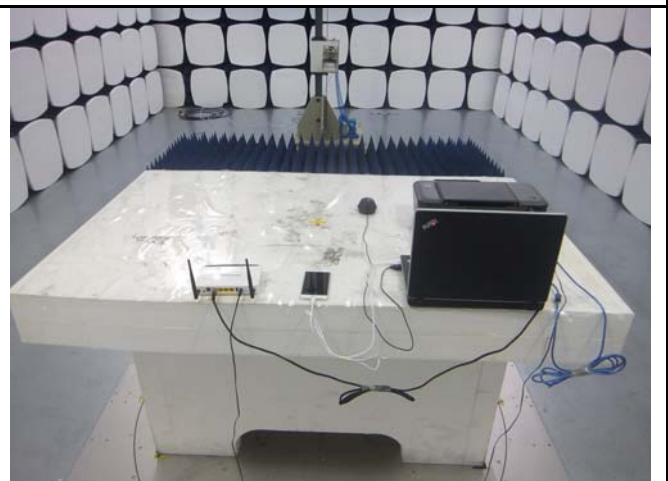
Conducted Emissions Test Setup – Front View



Conducted Emissions Test Setup – Side View



Radiated Emissions Test Setup Below 1GHz

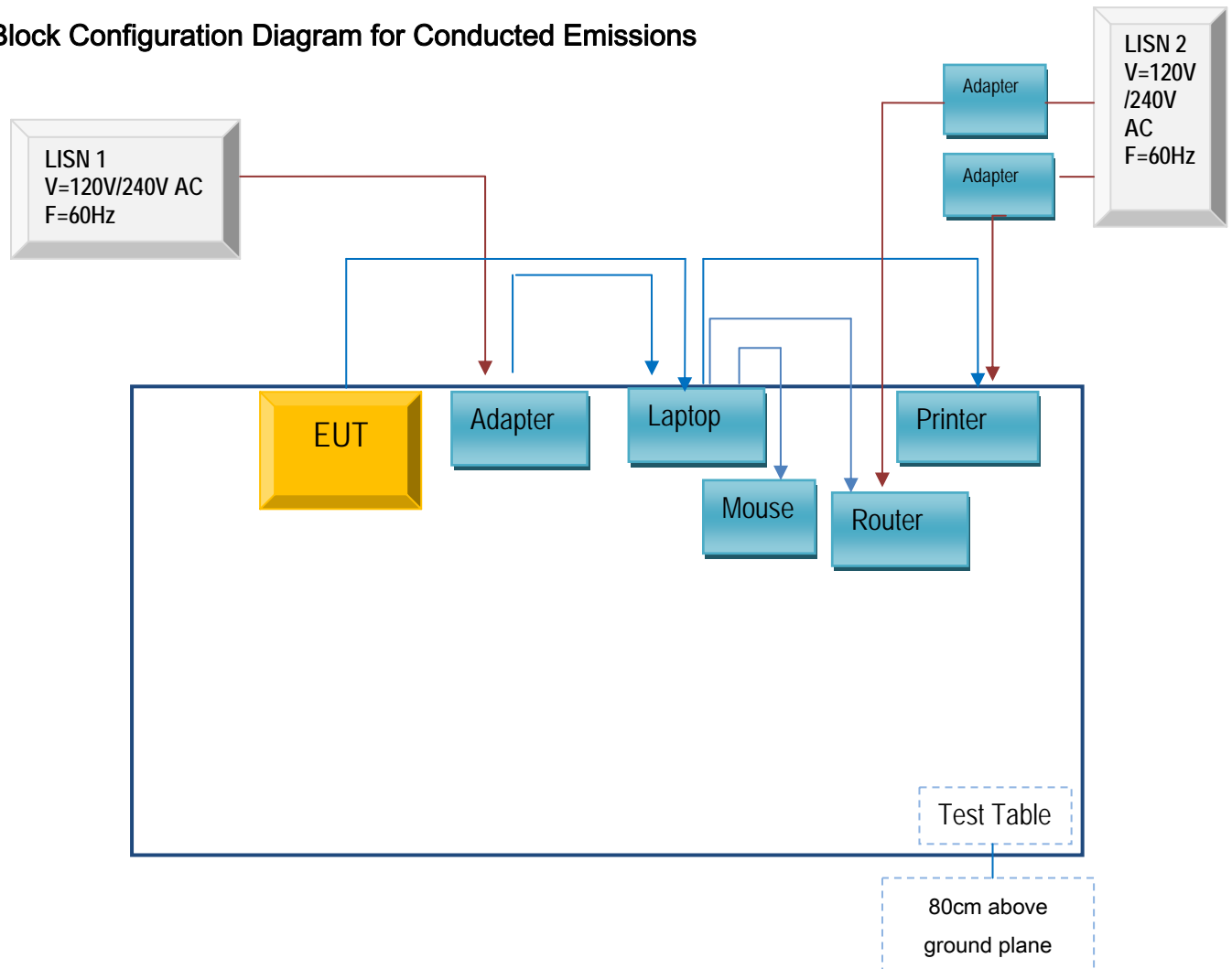


Radiated Emissions Test Setup Above 1GHz

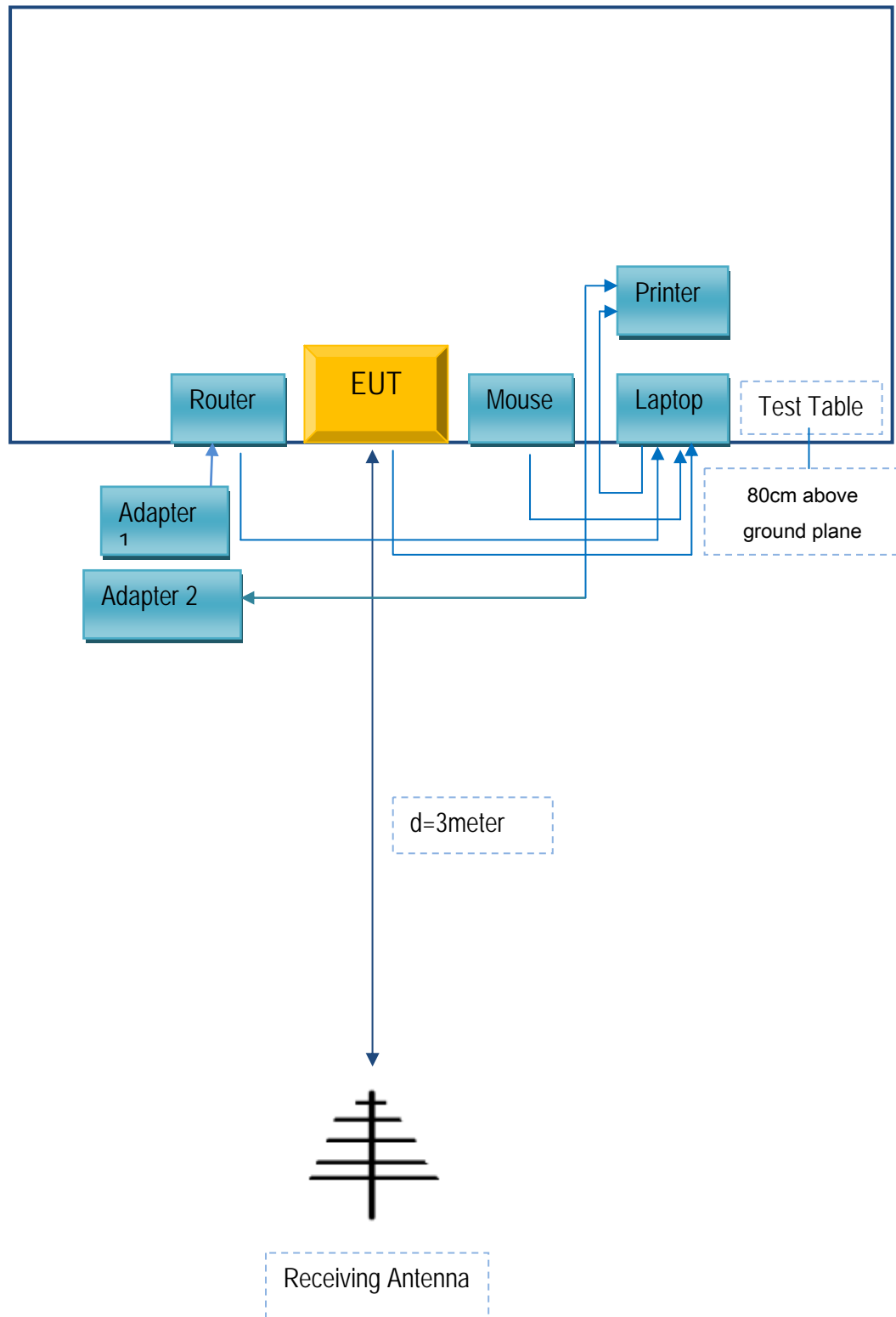
Annex C. TEST SETUP AND SUPPORTING EQUIPMENT

Annex C.ii. TEST SET UP BLOCK

Block Configuration Diagram for Conducted Emissions



Block Configuration Diagram for Radiated Emissions



Annex C. ii. SUPPORTING EQUIPMENT DESCRIPTION

The following is a description of supporting equipment and details of cables used with the EUT.

Supporting Equipment:

Manufacturer	Equipment Description	Model	Serial No
Lenovo	Laptop	E40	LR-1EHRX
GOLDWEB	Router	R102	1202032094
Shenzhen Konka Telecommunications Technology Co.,Ltd.	Adapter	HJ-0502000W2-AR	HJ16H4C00010
Lenovo	AC Adapter	42T4416	21D9JU
HP	Printer	VCVRA-1003	CN36M19JWX
DELL	Mouse	E100	912NMTUT41481
BULL	Socket	GN-403	GN201203

Supporting Cable:

Cable type	Shield Type	Ferrite Core	Length	Serial No
USB Cable	Un-shielding	No	2m	JX120051274
USB Cable	Un-shielding	No	2m	JX110725002
RJ45 Cable	Un-shielding	No	2m	KX156327541
Router Power cable	Un-shielding	No	2m	13274630Z
Printer Power cable	Un-shielding	No	2m	127581031
Power Cable	Un-shielding	No	0.8m	GT211032

Test Report	16071058-FCC-E
Page	29 of 29

Annex D. User Manual / Block Diagram / Schematics / Partlist

Please see attachment