

Annex A: Photographs of the Test Set-up

Photo 1: Power Line Conducted Emission Test

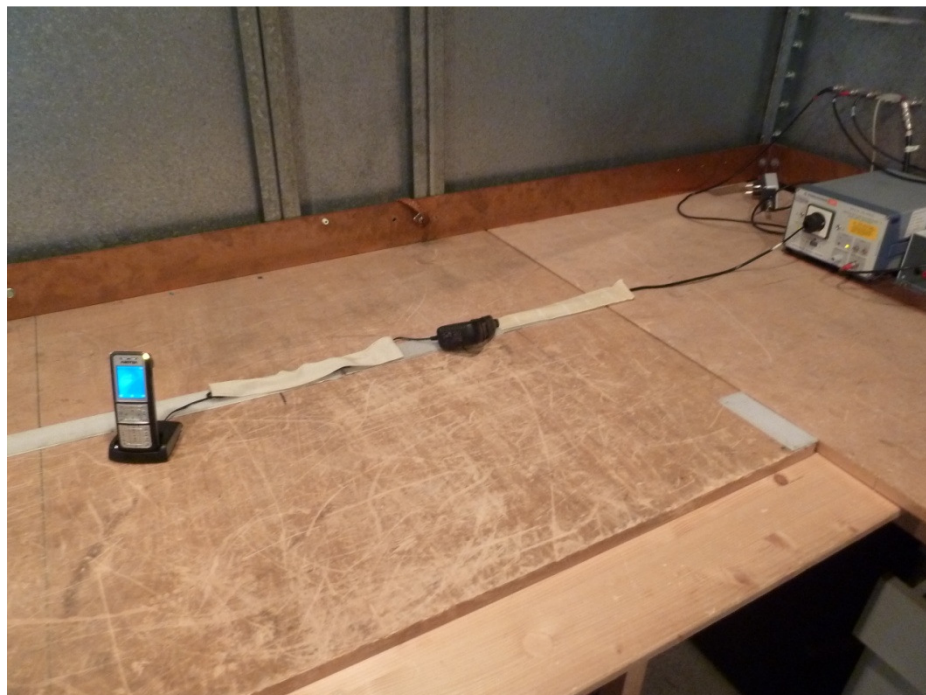
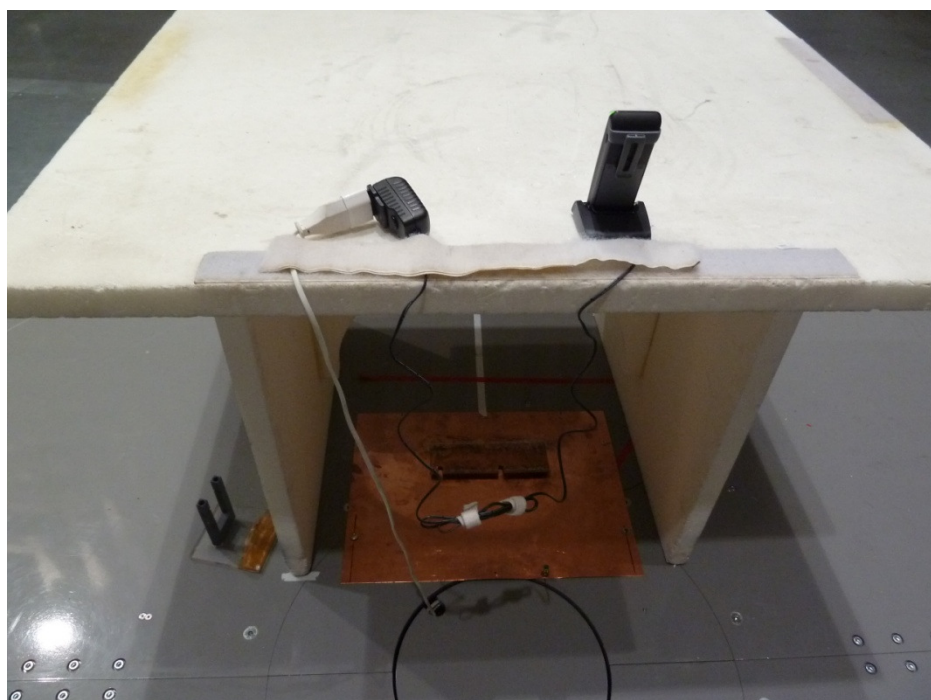


Photo 2: Radiated Emission



Annex B: External Photographs of the EUT

Photo 1:



Photo 2:



Photo 3:



Photo 4:



Photo 6:



Photo 7:



Photo 8:



Annex C: Internal Photographs of the EUT

Photo 1:



Photo 2:

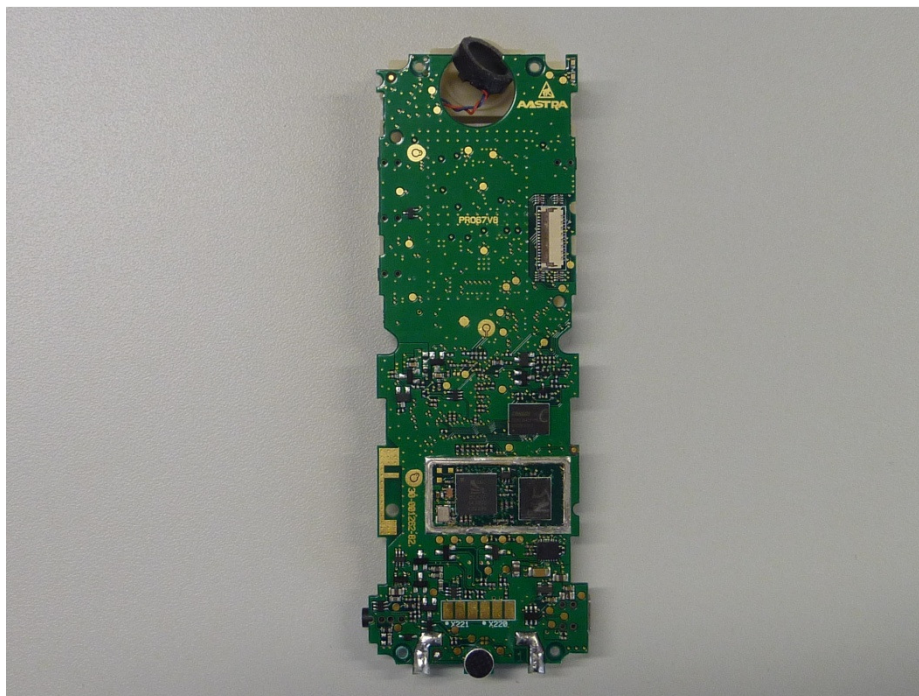


Photo 3:

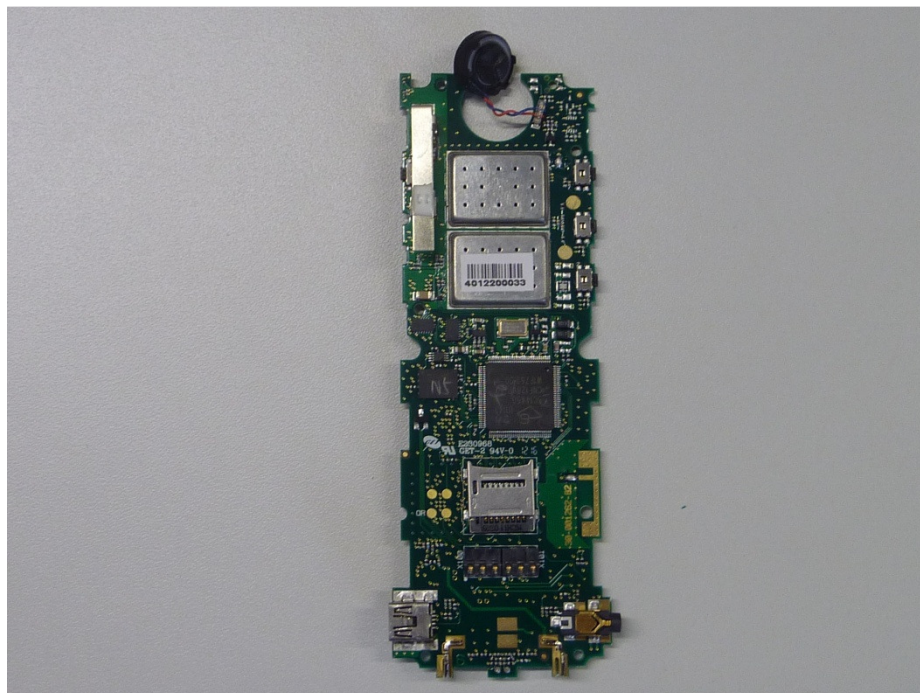


Photo 4:

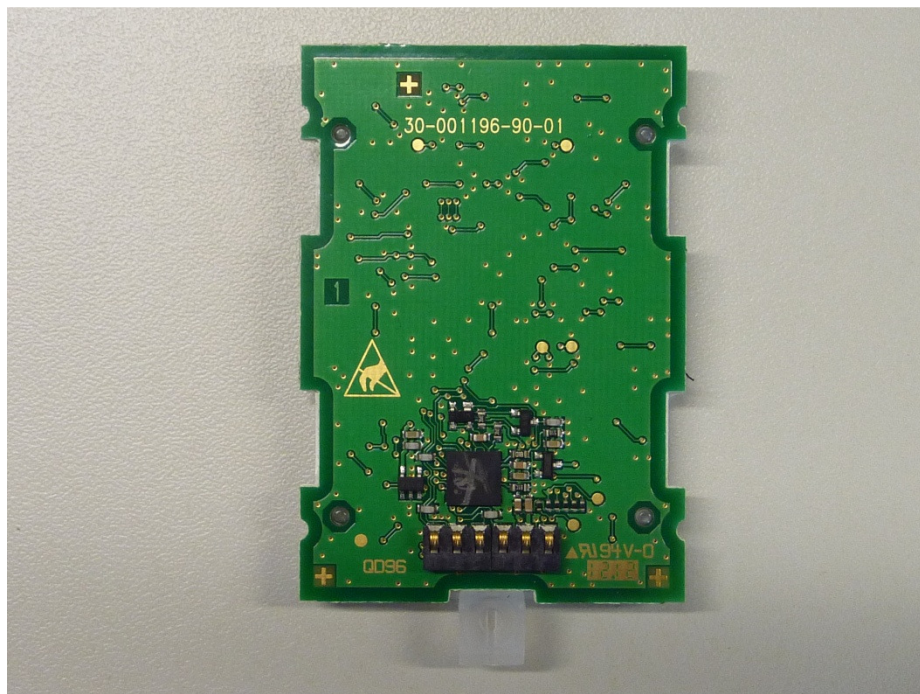


Photo 5:

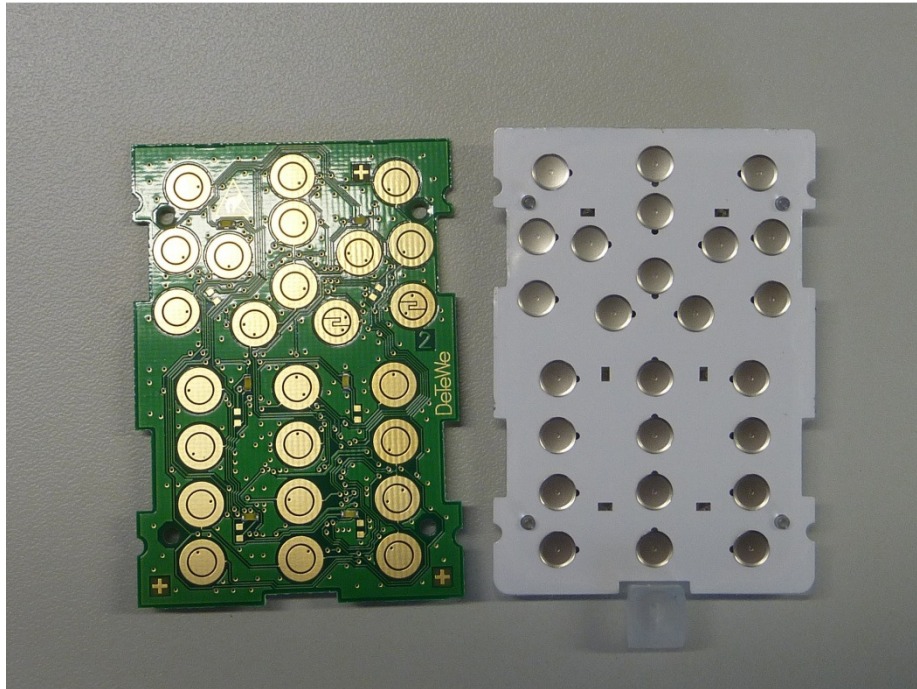


Photo 6:

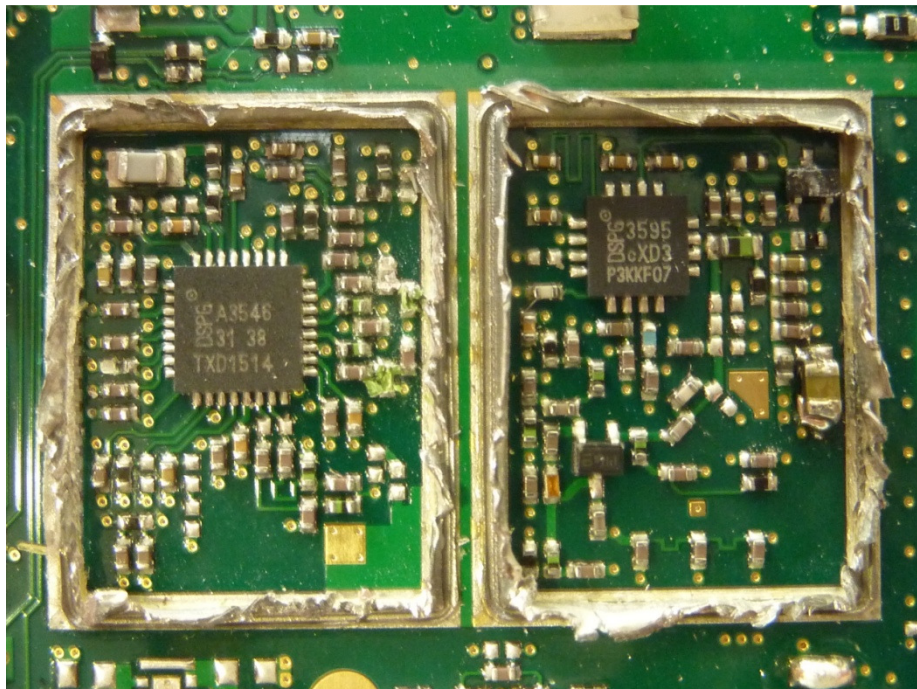
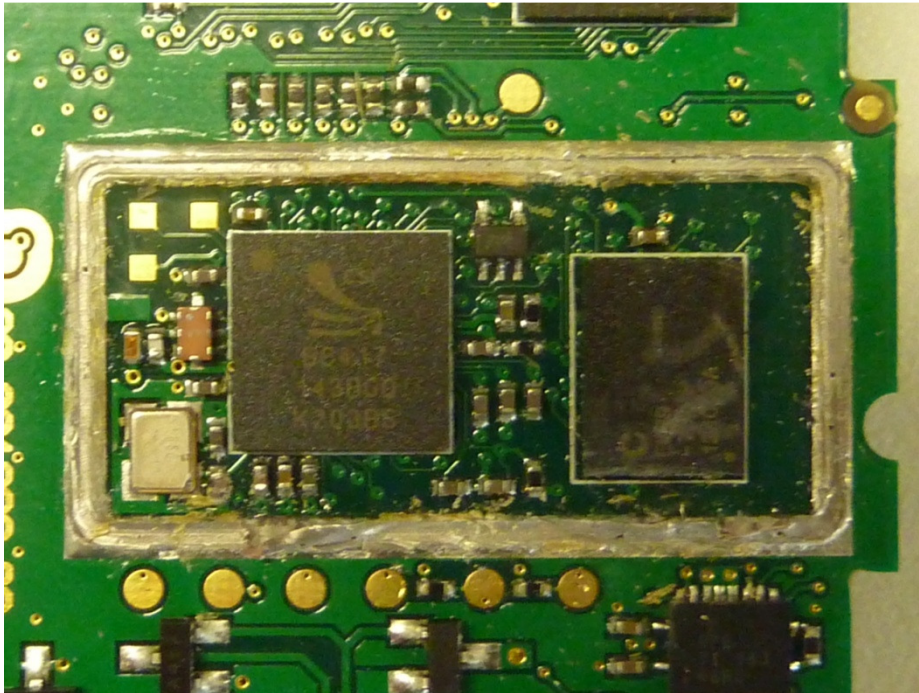


Photo 7:



Annex D: Document History

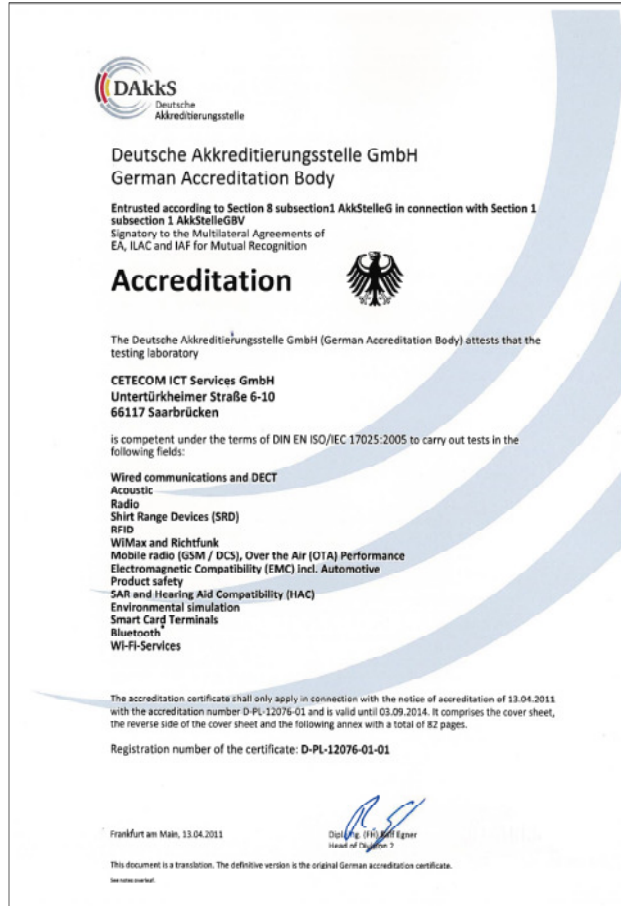
Version	Applied Changes	Date of Release
	Initial Release	2012-06-13

Annex E: Further Information

Glossary

DUT	-	Device under Test
EMC	-	Electromagnetic Compatibility
EUT	-	Equipment under Test
FCC	-	Federal Communication Commission
FCC ID	-	Company Identifier at FCC
HW	-	Hardware
IC	-	Industry Canada
Inv. No.	-	Inventory number
N/A	-	not applicable
S/N	-	Serial Number
SW	-	Software

Annex F: Accreditation Certificate



Front side of the certificate



Back side of the certificate

Note: The current certificate including annex is published on our website (link see below) or may be received from CETECOM ICT Services on request

http://www.cetecom.com/fileadmin/de/CETECOM_D_Saarbruecken/accreditations_Jan_2010/DAKKS_Akkreditations_Urk_EN17025-En_incl_Annex.pdf