

## EMI TEST REPORT

On Model Name: Microwave Oven

Model Numbers: P12534(X)(Y)V-(Z),  
P12543(X)(Y)V-(Z)

Brand Name: Galanz

FCC ID Number: UHW12534001

Prepared for Guangdong Galanz Enterprises Co., Ltd.

According to

FCC Part 18(2015)

*Industrial, Scientific and Medical Equipment*

FCC/OST MP-5(1986)

*FCC methods of measurements of radio noise emission from  
industrial, scientific and medical equipment*



Test Report #: GUA-1605-11491-FCC

Prepared by:



ECMG

ViVi Huang/Assistant Company Name

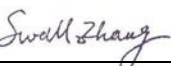
Reviewed by:



ECMG

Jawen Yin/Senior Engineer Company Name

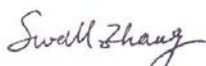
QC Manager:



ECMG

Swall Zhang/QC Manager Company Name

Test Report Released by:



Swall Zhang

May 3<sup>rd</sup>, 2016

Date

### ***Revision History***

<b><i>Rev.</i></b>	<b><i>Issue date</i></b>	<b><i>Revision</i></b>	<b><i>Revised by</i></b>
Rev. A	05/03/2016	Initial review	Jawen Yin

### **Test Location**

*Tests performed in a Certified ANSI Semi-Anechoic Chamber and Shielded Room.*

*Test Site Location : EMC Laboratory of Guangdong  
Galanz Enterprises Co., Ltd.  
No.25 South Ronggui Rd., Shunde,  
Foshan, Guangdong, China.*

*Tel : (86)-757-23612785*

*Fax : (86)-757- 23612537*

### **Test Facility**

*The test facility was recognized, certified, or accredited by the following organizations:*

*In compliance with the site registration requirements of section 2.948 of the FCC rules to perform EMI measurements for the general public.*

*FCC Registration Number: 580210*

# Table of Contents

---

GOVERNMENT DISCLAIMER NOTICE .....	2
REPRODUCTION CLAUSE .....	2
OPINIONS AND INTERPRETATIONS .....	2
STATEMENT OF MEASUREMENT UNCERTAINTY .....	2
ADMINISTRATIVE DATA .....	3
EUT DESCRIPTION .....	4
EUT MODEL DERIVED .....	4
TEST SUMMARY .....	5
LOAD FOR MICROWAVE OVEN .....	6
EUT EXERCISE SOFTWARE .....	6
EQUIPMENT MODIFICATION .....	6
EUT SAMPLE PHOTOS FOR MODEL P12534ALV-J9A .....	7
TEST SYSTEM DETAILS .....	12
CONFIGURATION OF TESTED SYSTEM .....	13
ATTACHMENT 1 -RADIATION HAZARD TEST .....	14
ATTACHMENT 2 - INPUT POWER MEASUREMENT .....	16
ATTACHMENT 3 - RF OUTPUT POWER MEASUREMENT .....	18
ATTACHMENT 4 - OPERATING FREQUENCY MEASUREMENT .....	20
ATTACHMENT 5 - CONDUCTED EMISSION TEST RESULTS .....	23
ATTACHMENT 6 - RADIATED EMISSION TEST RESULTS .....	28

### **List Attached Files**

<i>Exhibit Type</i>	<i>File Description</i>	<i>File Name</i>
<i>Test Report</i>	<i>Test Report</i>	<i>UHW12534001_Test Report.pdf</i>
<i>Operation Description</i>	<i>Technical Description</i>	<i>UHW12534001_Operation Description.pdf</i>
<i>External Photos</i>	<i>External Photos</i>	<i>UHW12534001_External Photos.pdf</i>
<i>Internal Photos</i>	<i>Internal Photos</i>	<i>UHW12534001 _Internal Photos.pdf</i>
<i>Block Diagram</i>	<i>Block Diagram</i>	<i>UHW12534001 _Block Diagram.pdf</i>
<i>Schematics</i>	<i>Circuit Diagram</i>	<i>UHW12534001_Schematics.pdf</i>
<i>ID Label/Location</i>	<i>Label and Location</i>	<i>UHW12534001_Label &amp; Location.pdf</i>
<i>User Manual</i>	<i>User Manual</i>	<i>UHW12534001_User's Manual.pdf</i>
<i>Test set-up photos</i>	<i>Test set-up photos</i>	<i>UHW12534001 _Test Set-up Photos</i>

### **Government Disclaimer Notice**

*When government drawing, specification, or other data are used for any purpose other than in connection with a definitely related government procurement operation, the United States Government thereby incurs no responsibility nor any obligation whatsoever; and the fact that the Government may have formulated, furnished, or in any way supplied the said drawing, specifications, or other data, is not to be regarded by implication or otherwise in any manner licensing the holder or any other person or corporation, or conveying any rights or permission to manufacture, use, or sell patented invention that may in any way be related thereto. This report must not be used to claim product endorsement by NVLAP or any agency of the U.S. Government.*

### **Reproduction Clause**

*Any reproduction of this document must be done in full. No single part of this document may be reproduced without permission from ECMG Electronic Technical Testing Corp (Shenzhen).*

### **Opinions and Interpretations**

*This test report relates to the abovementioned equipment under test (EUT). Without the permission of ECMG Electronic Technical Testing Corp (Shenzhen) Test Lab this test report is not permitted to be duplicated in extracts. This test report does not entitle to carry any test mark on this or similar products. The manufacturer has sole responsibility of continued compliance of the device.*

### **Statement of Measurement Uncertainty**

*The data and results referenced in the document are true and accurate. The reader is cautioned that there may be errors within the calibration limits of the equipment and facilities that can account for a nominal measurement error. Furthermore, component and process variability of devices similar to that tested may result in additional deviation.*

## **Administrative Data**

*Test Sample* : Microwave Oven

*Model Numbers* : P12534(X)(Y)V-(Z), P12543(X)(Y)V-(Z)

*Model Tested* : P12534ALV-J9A

*Brand Name* : Galanz

*Receipt Date* : April 14<sup>th</sup>, 2016

*Date Tested* : April 15<sup>th</sup>, 2016

*Applicant* : Guangdong Galanz Enterprises Co., Ltd.

*Address* : No.25 South Ronggui Rd., Shunde, Foshan,  
Guangdong , China

*Telephone* : (86)-757-23612785

*Fax* : (86)-757-23612537

*Manufacturer 01* : Guangdong Galanz Microwave Oven Electrical  
Appliance Manufacture Co., Ltd.

*Address* : 25 Ronggui Nan Rd., Shunde, Foshan,  
Guangdong , China

*Manufacturer 02* : Guangdong Galanz Microwave Electrical  
Appliances Manufacturing Co., Ltd.

*Address* : No.3, Xingpu Road, Maxin Industrial Zone,  
Huangpu Town, Zhongshan City, Guangdong  
Province, China

## **EUT Description**

*Guangdong Galanz Enterprises Co., Ltd. model tested P12534ALV-J9A (referred to as the EUT in this report) is a Microwave Oven.*

*The technical specifications of EUT are as below:*

Power Supply	120V AC/60Hz
Rated Input Power (Microwave)	1450W
Rated Output Power (Microwave)	1250W
Frequency	2450 MHz(Class B/Group 2)
Magnetron Model	M24FB-710AB
Magnetron Manufacturer	Galanz

*Note: For more detailed information or features please refer to user's manual of EUT.*

## **EUT Model Derived**

*P12534(X)(Y)V-(Z) and P12543(X)(Y)V-(Z) model designations as follows:*

*P: With Microwave functions only.*

*125: denote the output power is 1250W*

*34 or 43: denote different capacity in 34 or 43 liters.*

*Variable (X) may be L, P, TL, TP, SL, SP, AL, AP, ASL, ASP, ATL, ATP, EL, EP, ESL, ESP, ETL, ETP, ML, MP, MSL, MSP, MTL, MTP.*

*“L” is pull-out type door, “P” is push-button type door.*

*When there is no letter before “L” and “P”, denotes mechanical control model; When there are “A” or “E” or “M” denote the electrical control model. “S” denotes stainless steel cavity; When there is without “S” before “L” or “P” denotes the epoxy painted cavity.*

*Variable (Y) : When there is “H” denote humidity sensor.*

*V: denote frequency conversion function.*

*Variable (Z) may compose by one to six characters from A to Z and/or numbers from 0 to 9. It represents the differences of the appearance.*

*P12534ALV-J9A model designations:*

*P: With Microwave functions only.*

*125: denote the output power is 1250W*

*34: denote different capacity in 34 liters.*

*AL :denote electrical control model and epoxy painted cavity and pull-out type door.*

*V : denote frequency conversion function.*

*J9A: denote the appearance.*

*Model P12534ALV-J9A was chosen for the final testing.*



## Test Summary

*The electromagnetic compatibility requirements on model P12534ALV-J9A for this test are stated below. all results listed in this report relate exclusively to this above-mentioned model as the equipment under test. this report confers no approval or endorsement upon any other component, host or subsystem used in the test set-up.*

Emission Tests				
Specifications	Description	Test Results	Test Point	Remark
FCC Part 18:2015 FCC/OST MP-5:1986 ANSI C63.4-2014	Radiation Hazard Measurement	Passed	Enclosure	Attachment 1
FCC Part 18:2015 FCC/OST MP-5:1986 ANSI C63.4-2014	Input Power Measurement	Passed	AC Input Port	Attachment 2
FCC Part 18:2015 FCC/OST MP-5:1986 ANSI C63.4-2014	RF Output power Measurement	Passed	EUT	Attachment 3
FCC Part 18:2015 FCC/OST MP-5:1986 ANSI C63.4-2014	Operating Frequency Measurement	Passed	EUT	Attachment 4
FCC Part 18:2015 FCC/OST MP-5:1986 ANSI C63.4-2014	Conducted Emission	Passed	AC Input Port	Attachment 5
FCC Part 18:2015 FCC/OST MP-5:1986 ANSI C63.4-2014	Radiated Emission	Passed	Enclosure	Attachment 6

### ***Load for Microwave Oven***

*For all measurements the energy developed by the oven was absorbed by a dummy load consisting of a quantity of tap water in a beaker. If the oven was provided with a shelf or other utensil support, this support was in its initial normal position. For ovens rated at 1000watts or less power output, the beaker contained quantities of water as listed in the following subparagraphs. For ovens rated at more than 1000watts output, each quantity was increased by 50% for each 500watts or fraction thereof in excess of 1000 watts. Additional beakers were used if necessary.*

*-Load for power output measurement: 1000 milliliters of water in the beaker located in the center of the oven.*

*-Load for frequency measurement: 1000 milliliters of water in the beaker located in the center of the oven.*

*-Load for measurement of radiation on second and third harmonic: Two loads, one of 700 and the other of 300 milliliters, of water are used. Each load is tested both with the beaker located in the center of the oven and with it in the right front corner.*

*-Load for all other measurements: 700 milliliters of water, with the beaker located in the center of the oven.*

### ***EUT Exercise Software***

*No Test software support this test.*

### ***Equipment Modification***

*Any modifications installed previous to testing by Guangdong Galanz Enterprises Co., Ltd., will be incorporated in each production model sold or leased in United States.*

*There were no modifications installed by ECMG Electronic Technical Testing Corp (Shenzhen) test personnel.*

***EUT Sample Photos for Model P12534ALV-J9A***



***EUT Front View***



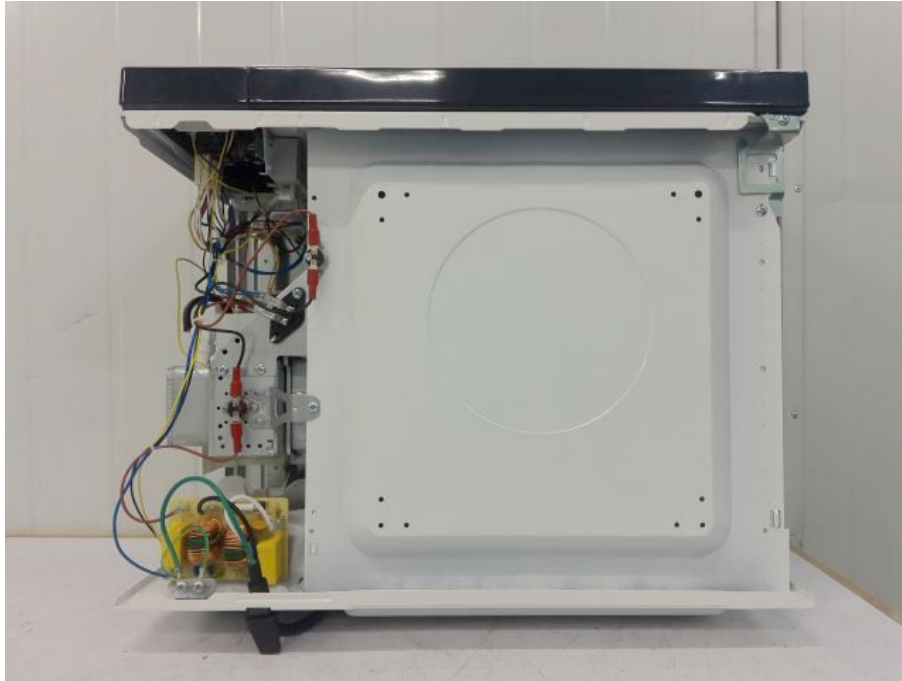
***EUT Back View***



***Door Open View***



***Uncovered View from right side***



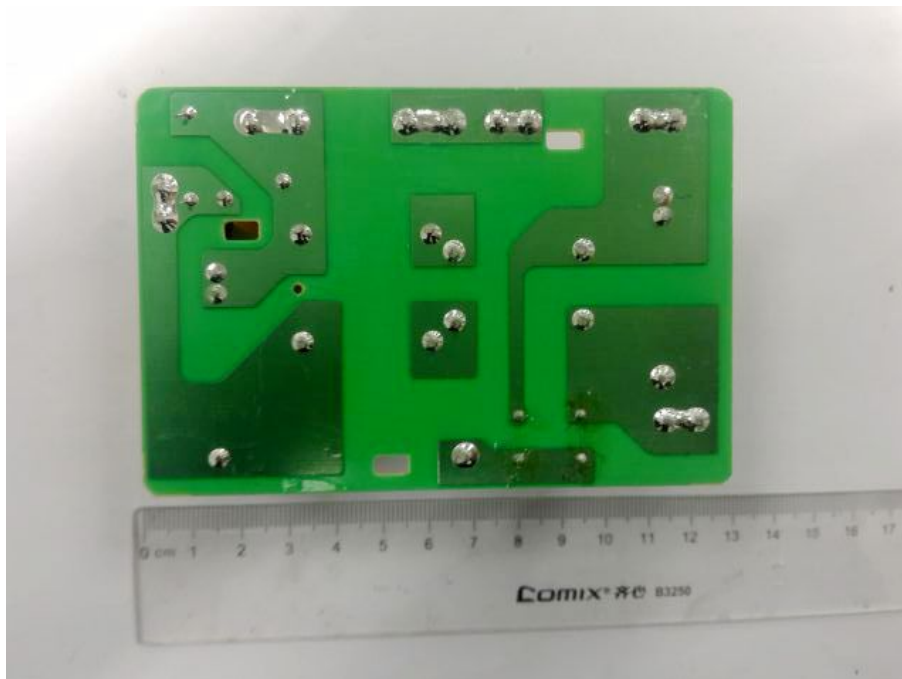
***Uncovered View from top side***



***Magnetron Front View***



***Power Filter Board Top View***

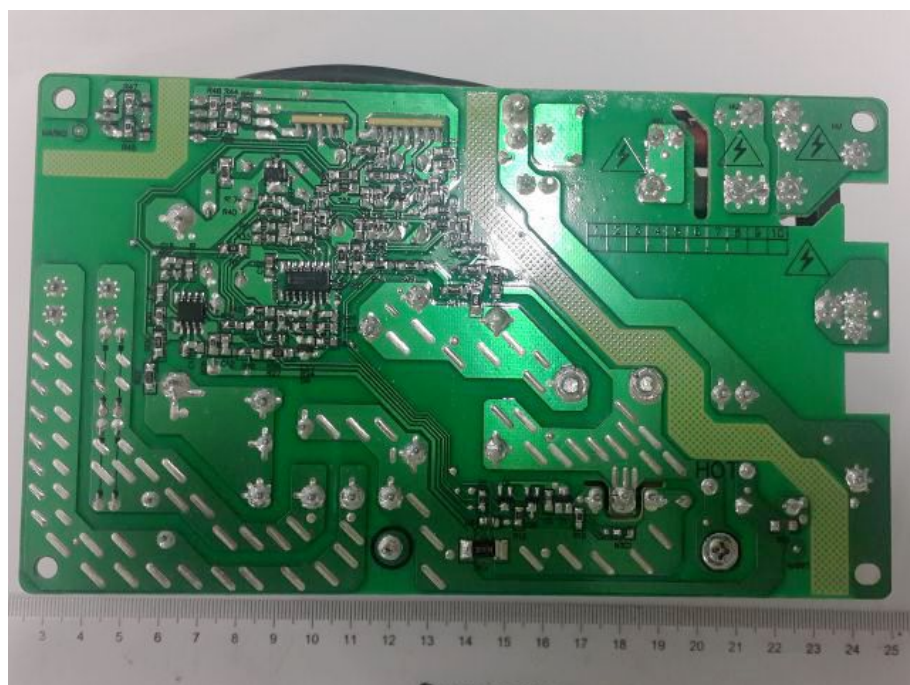


***Power Filter Board Bottom View***





**Mother board - Top View**



**Mother board - Bottom View**

## Test System Details

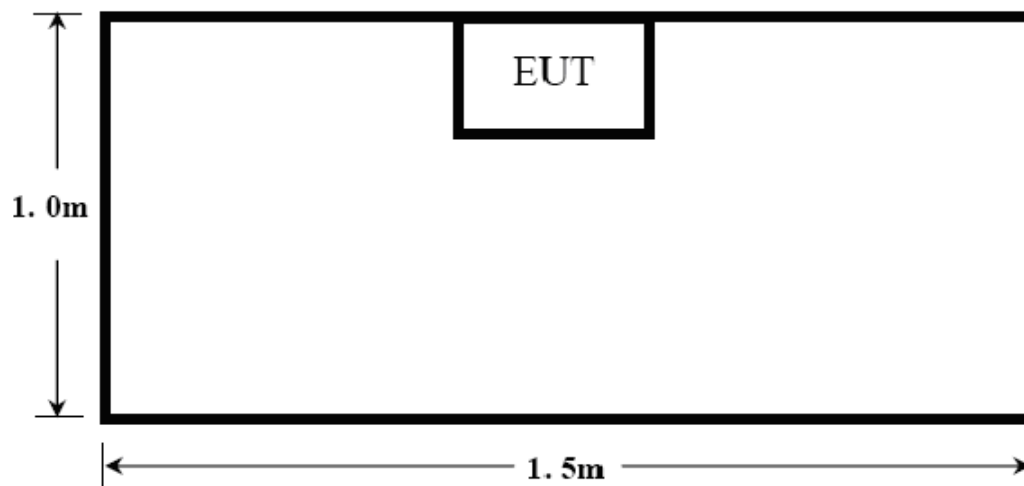
EUT					
Model Number:	P12534(X)(Y)V-(Z),P12543(X)(Y)V-(Z)				
Model Tested:	P12534ALV-J9A				
Description:	Microwave Oven				
Input:	AC 120V/60Hz				
Manufacturer:	Guangdong Galanz Enterprises Co., Ltd.				
Support Equipment					
Description	Model Number	Serial Number	Manufacturer		
N/A					
Cable Description					
Description	From	To	Length (Meters)	Shielded (Y/N)	Ferrite (Y/N)
Power Cable	EUT	Plug	1.10	N	N
Note:The “EUT” means “Microwave Oven”.					

### Note:

The EUT has been tested as an independent unit together with other necessary accessories or support units. The above support units or accessories were used to form a representative test configuration during the test tests.



### ***Configuration of Tested System***



**ATTACHMENT 1 -RADIATION HAZARD TEST**

<b>CLIENT:</b>	Guangdong Galanz Enterprises Co Ltd.	<b>TEST STANDERD:</b>	FCC Part 18
<b>MODEL NUMBERS:</b>	P12534(X)(Y)V-(Z) ,P12543(X)(Y)V-(Z)	<b>PRODUCT:</b>	Microwave Oven
<b>MODEL TESTED:</b>	P12534ALV-J9A	<b>EUT DESIGNATION:</b>	Home or Office
<b>TEMPERATURE:</b>	23°C	<b>HUMIDITY:</b>	51%
<b>ATM PRESSURE:</b>	103kPa	<b>GROUNDING:</b>	Through AC Power Cord
<b>TESTED BY:</b>	Daomen Guan	<b>DATE OF TEST:</b>	April15 <sup>th</sup> ,2016
<b>TEST REFERENCE:</b>	ANSI C63.4-2014, FCC/OST MP-5:1986		
<b>TEST PROCEDURE:</b>	The EUT was set-up according to the FCC MP-5 and FCC Part 18 for Radiation Hazard Measurement. The measurement was using a microwave leakage meter to measure the Radiation leakage in the as-received condition with the oven door closed. A 875ml water load in a beaker was located in the center of the oven and the Microwave Oven was set to maximum power. While the oven operating, the microwavemeter will check the leakage and then record the maximum leakage.		
<b>TESTED RANGE:</b>	N/A		
<b>TEST VOLTAGE:</b>	AC 120V/60Hz		
<b>RESULTS:</b>	There was no microwave leakage exceeding a power level of 0.19mW/cm <sup>2</sup> observed at any point 5cm or more from the external surface of the oven.  A maximum of 1.0 mW/cm <sup>2</sup> is allowed in accordance with the applicable FCC standards. Hence, microwave leakage in the as-received condition with the oven door closed was below the maximum allowed. The test results relate only to the equipment under test provided by client.		
<b>CHANGES OR MODIFICATIONS:</b>	There were no modifications installed by ECMG Electronic Technical Testing Corp (Shenzhen) test personnel.		
<b>M. UNCERTAINTY:</b>	0.0001 mW/cm <sup>2</sup>		

### Test Equipment List:

Test Equipment	Manufacturer	Model	Serial No.	Cal. Due Date
Microwave Measurement system	HOLADAY	HI-1710	98370	2017.1.16

TESTED BY: Zamen  
ENGINEER

REVIEWED BY: Jamario  
SENIOR ENGINEER

### Radiation Hazard Test Set up:



**ATTACHMENT 2 – INPUT POWER MEASUREMENT**

<b>CLIENT:</b>	Guangdong Galanz Enterprises Co Ltd.	<b>TEST STANDERD:</b>	FCC Part 18
<b>MODEL NUMBERS:</b>	P12534(X)(Y)V-(Z) ,P12543(X)(Y)V-(Z)	<b>PRODUCT:</b>	Microwave Oven
<b>MODEL TESTED:</b>	P12534ALV-J9A	<b>EUT DESIGNATION:</b>	Home or Office
<b>TEMPERATURE:</b>	22°C	<b>HUMIDITY:</b>	59%
<b>ATM PRESSURE:</b>	103.1kPa	<b>GROUNDING:</b>	Through AC Power Cord
<b>TESTED BY:</b>	Daomen Guan	<b>DATE OF TEST:</b>	April15 <sup>th</sup> ,2016
<b>TEST REFERENCE:</b>	ANSI C63.4-2014, FCC/OST MP-5:1986		
<b>TEST PROCEDURE:</b>	The EUT was set up according to the FCC MP-5 and FCC Part 18 for input power measurement. The input power and current was measured using a power analyzer. A 875ml water load in a beaker was located in the center of the oven and the Microwave Oven was set to maximum power. While the oven is operating, use a voltmeter and an ampmeter to test the AC input voltage and current.		
<b>TESTED RANGE:</b>	N/A		
<b>TEST VOLTAGE:</b>	120VAC / 60Hz		
<b>RESULTS :</b>	Based on the measured input power, the EUT was found to be operating within the intended specifications. The test results relate only to the equipment under test provided by client.		
<b>CHANGES OR MODIFICATIONS:</b>	There were no modifications installed by ECMG Electronic Technical Testing Corp (Shenzhen) test personnel.		
<b>M. UNCERTAINTY :</b>	± 5W		

### Test Data:

Input voltage (V)	Input Current (A)	Measured Input Power (W)	Rated input Power (W)
120.1V/60Hz	12.92	1434	1450

### Test Equipments List:

Test Equipment	Manufacturer	Model	Serial No.	Cal. Due Date
Power Meter	Ainuo	AN8720P	058704074	2016.07.19

TESTED BY: Zamen  
ENGINEER

REVIEWED BY: Jameryia  
SENIOR ENGINEER

### Input power Test Set up:



**ATTACHMENT 3 – RF OUTPUT POWER MEASUREMENT**

<b>CLIENT:</b>	Guangdong Galanz Enterprises Co Ltd.	<b>TEST STANDERD:</b>	FCC Part 18
<b>MODEL NUMBERS:</b>	P12534(X)(Y)V-(Z),P12543(X)(Y)V-(Z)	<b>PRODUCT:</b>	Microwave Oven
<b>MODEL TESTED:</b>	P12534ALV-J9A	<b>EUT DESIGNATION:</b>	Home or Office
<b>TEMPERATURE:</b>	22 °C	<b>HUMIDITY:</b>	60%RH
<b>ATM PRESSURE:</b>	103kPa	<b>GROUNDING:</b>	Through AC Power Cord
<b>TESTED BY:</b>	Daomen Guan	<b>DATE OF TEST:</b>	April15 <sup>th</sup> ,2016
<b>TEST REFERENCE:</b>	ANSI C63.4-2014, FCC/OST MP-5:1986		
<b>TEST PROCEDURE:</b>	<p>The EUT was set up according to the FCC MP-5 and FCC Part 18 for RF output power Measurement. The Caloric Method was used to determine maximum RF output power. The initial temperature of the water load was measured. A 1250ml water load in a beaker was located in the center of the oven. The oven was operated at maximum output power for 120 seconds, the temperature of the water was re-measured.</p> <p>RF Output Power = (4.2joules/calorie)(volume in milliliters)(temperature rise) / (time in seconds) = 4.2 joules/calorie × 1250 × (Final Temp - Initial Temp) / 120</p>		
<b>TESTED RANGE:</b>	N/A		
<b>TEST VOLTAGE:</b>	120VAC / 60Hz		
<b>RESULTS:</b>	RF Output Power = 1238.1 watts. The test results relate only to the equipment under test provided by client.		
<b>CHANGES OR MODIFICATIONS:</b>	There were no modifications installed by ECMG Electronic Technical Testing Corp (Shenzhen) test personnel.		
<b>M. UNCERTAINTY:</b>	± 0.3°C		

**Test Result:**

Initial Temp (°C)	Final Temp (°C)	Measured Times (s)	Measured out put Power(W)
20.2	48.5	123S	1238.1

$$RF \text{ Output Power (W)} = 4.2 \times 1250 \times (\text{Final Temp} - \text{Initial Temp}) / 120 = 1238.1 \text{ watts}$$

**Test Equipments list:**

Test Equipment	Manufacturer	Model	Serial No.	Cal. Due Date
Digit Thermometer	TES	TES1310	021108782	2016.08.12
Electronic scale	USA.HZ&HUAZI	5kg	11038	2017.03.24
Power Meter	Ainuo	AN8720P	058704074	2016.07.19

TESTED BY:



ENGINEER

REVIEWED BY:



SENIOR ENGINEER

**RF Output power Test Set up:**

**ATTACHMENT 4 - OPERATING FREQUENCY MEASUREMENT**

<b>CLIENT:</b>	Guangdong Galanz Enterprises Co Ltd.	<b>TEST STANDERD:</b>	FCC Part 18
<b>MODEL NUMBERS:</b>	P12534(X)(Y)V-(Z) ,P12543(X)(Y)V-(Z)	<b>PRODUCT:</b>	Microwave Oven
<b>MODEL TESTED:</b>	P12534ALV-J9A	<b>EUT DESIGNATION:</b>	Home or Office
<b>TEMPERATURE:</b>	22°C	<b>HUMIDITY:</b>	60%RH
<b>ATM PRESSURE:</b>	101.1kPa	<b>GROUNDING:</b>	Through AC Power Cord
<b>TESTED BY:</b>	Daomen Guan	<b>DATE OF TEST:</b>	April15 <sup>th</sup> ,2016
<b>TEST REFERENCE:</b>	ANSI C63.4-2014, FCC/OST MP-5:1986		
<b>TEST PROCEDURE:</b>	<p>The EUT was set up according to the FCC MP-5 and FCC Part 18 for Operating Frequency Measurement.</p> <p>1) The variation of frequency with time. The operating frequency was measured using a spectrum analyzer. Starting with the EUT at room temperature, a 1250ml water load in a beaker was located in the center of the oven. Set a spectrum analyzer with antenna at 3 meters distance form the oven and the oven was operated at maximum output power. The fundamental operating frequency was monitored until the water load was reduced to 20 percent of the original load.</p> <p>2) The variation of frequency with Line Voltage. The operating frequency was measured using a spectrum analyzer. The EUT was operated/warmed by at least 10 minutes of use with a 1250ml water load at room temperature at the beginning of the test. Then the operating frequency was monitored as the input voltage was varied between 80 and 125 percent of the nominal rating.</p>		
<b>TESTED RANGE:</b>	2450 ± 50MHz		
<b>TEST VOLTAGE:</b>	120VAC / 60Hz		
<b>RESULTS:</b>	Please refer to following pages for details of the variation in operating frequency with time & line voltage measurement. The test results relate only to the equipment under test provided by client.		
<b>CHANGES OR MODIFICATIONS:</b>	There were no modifications installed by ECMG Electronic Technical Testing Corp (Shenzhen) test personnel.		
<b>M. UNCERTAINTY:</b>	Freq. ±10kHz		



***Variation in Operating Frequency with Time:***

<i>Minimum Frequency (MHz)</i>	<i>Maximum Frequency (MHz)</i>
2406.8	2467.4

***Variation in Operating Frequency with Line Voltage:***

<i>Minimum Frequency (MHz)</i>	<i>Maximum Frequency (MHz)</i>
2406.4	2468.0
<i>Note: Line voltage varied from 96Vac to 150Vac.</i>	

### ***Test Equipments List:***

<b><i>Test Equipment</i></b>	<b><i>Manufacturer</i></b>	<b><i>Model</i></b>	<b><i>Serial No.</i></b>	<b><i>Last Cal.</i></b>	<b><i>Cal. Due</i></b>
<i>Spectrum Analyzer</i>	<i>R&amp;S</i>	<i>FSP30</i>	<i>100755</i>	<i>11/20/2015</i>	<i>11/19/2016</i>
<i>Horn Antenna</i>	<i>ETS</i>	<i>3115</i>	<i>6587</i>	<i>10/24/2015</i>	<i>10/23/2016</i>

*Note: All testing were performed using internationally recognized standards. All test instruments were calibrated and traceable to the National Institute of Standards and Technology (NIST).*

TESTED BY: *Zamen*  
ENGINEER

REVIEWED BY: *James*  
SENIOR ENGINEER

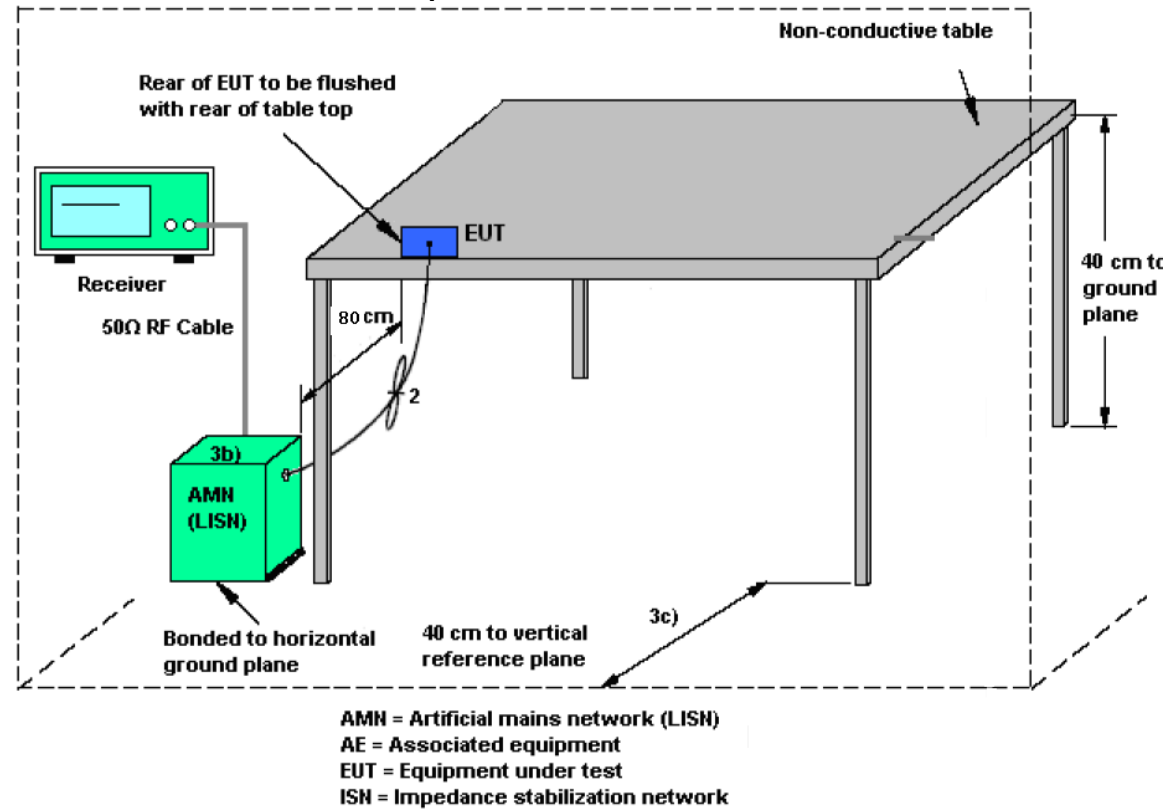
### ***Operating Frequency Test Set-up:***

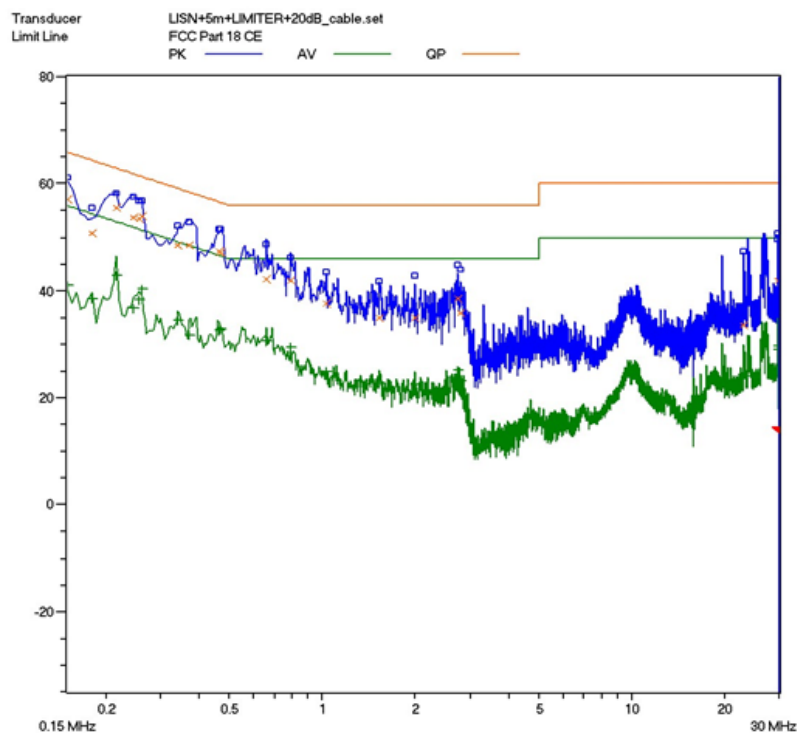


**ATTACHMENT 5 - CONDUCTED EMISSION TEST RESULTS**

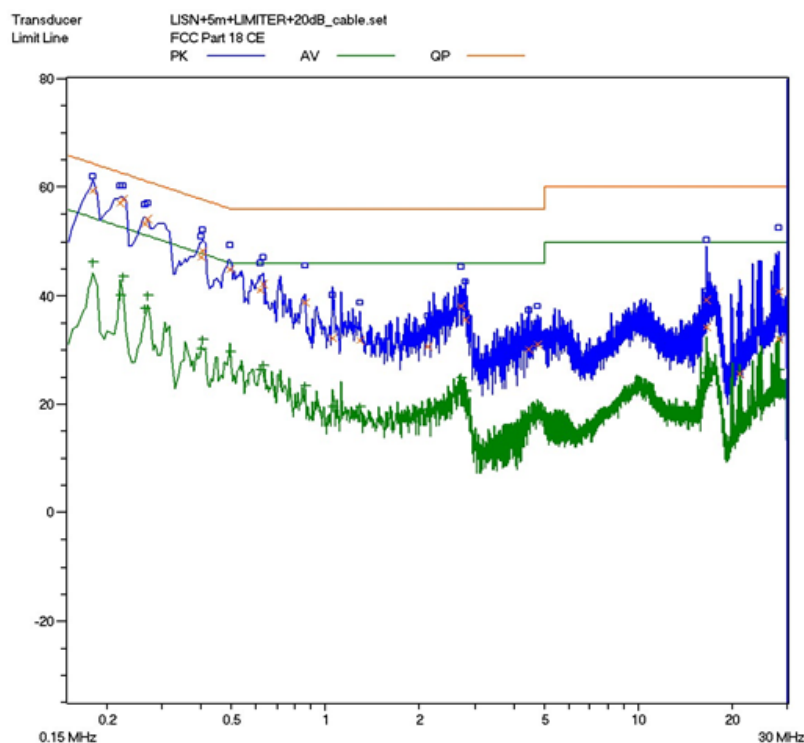
<b>CLIENT:</b>	Guangdong Galanz Enterprises Co Ltd.	<b>TEST STANDERD:</b>	FCC Part 18
<b>MODEL NUMBERS:</b>	P12534(X)(Y)V-(Z),P12543(X)(Y)V-(Z)	<b>PRODUCT:</b>	Microwave Oven
<b>MODEL TESTED:</b>	P12534ALV-J9A	<b>EUT DESIGNATION:</b>	Home or Office
<b>TEMPERATURE:</b>	22°C	<b>HUMIDITY:</b>	60%RH
<b>ATM PRESSURE:</b>	101.1kPa	<b>GROUNDING:</b>	Through AC Power Cord
<b>TESTED BY:</b>	Daomen Guan	<b>DATE OF TEST:</b>	April15 <sup>th</sup> ,2016
<b>TEST REFERENCE:</b>	ANSI C63.4-2014, FCC/OST MP-5:1986		
<b>TEST PROCEDURE:</b>	The EUT was set up according to the guideline of ANSI C63.4-2014 & FCC MP-5 for conducted emissions. The measurement was using a AMN on each line and an EMI receiver peak scan was made at the frequency measurement range. The six highest significant peaks were then marked, and these signals were then quasi-peaked and averaged. The frequency range investigated was from 150kHz to 30MHz.		
<b>TESTED RANGE:</b>	150kHz to 30MHz		
<b>TEST VOLTAGE:</b>	120VAC / 60Hz		
<b>RESULTS:</b>	The EUT meets the requirements of test reference for Conducted Emissions.The test results relate only to the equipment under test provided by client.		
<b>CHANGES OR MODIFICATIONS:</b>	There were no modifications installed by ECMG Electronic Technical Testing Corp (Shenzhen) test personnel.		
<b>M. UNCERTAINTY:</b>	The maximum measurement uncertainty is evaluated as : 150KHz~ 30MHz: 3.0dB		

### Conducted Emission Test Set up:





**Line L Conducted Emission Graph**



**Line N Conducted Emission Graph**

**Test Data:**

Lines (L/N)	Frequency (MHz)	Corrected QP Level (dBuV)	Limits QP (dBuV)	Margin QP (dB)	Frequency (MHz)	Corrected AV Level (dBuV)	Limits AV (dBuV)	Margin QP (dB)
L	0.1526	57.8	65.9	-8.1	0.1526	41.8	55.9	-14.1
L	0.2158	55.8	63.0	-7.2	0.2158	44.1	53	-8.9
L	0.3572	49.2	58.8	-9.6	0.3572	39.0	48.8	-9.8
N	0.1802	59.9	64.5	-4.6	0.1802	46.3	54.5	-8.2
N	0.2284	57.8	62.5	-4.7	0.2284	44.1	52.5	-8.4
N	0.2678	54.2	61.2	-7.0	0.2678	41.0	51.2	-10.2

Note :

- 1) All readings are using a bandwidth of 9 kHz, with a 500 ms sweep time. A video filter was not used.
- 2) "QP" means "Quasi-Peak" values, "AV" means "Average" values.
- 3) The other reading are too low against official limits that are not be recorded.

**Test Equipments List:**

Test Equipment	Manufacturer	Model No.	Serial No.	Last Cal.	Cal. Due
EMI test receiver	SCHAFFNER	SMR4503	44	10/26/2015	10/25/2016
AMN	R&S	ESH2-Z5	0338.5219.5 3-100396-vj	03/31/2016	03/30/2017
Shielding Room	ETS	8m×4m×3m	N/A	05/13/2016	05/12/2017

Note: All testing were performed using internationally recognized standards. All test instruments were calibrated and traceable to the National Institute of Standards and Technology (NIST).

TESTED BY:



ENGINEER

REVIEWED BY:



SENIOR ENGINEER

***Conducted Emission Test Set-up:***

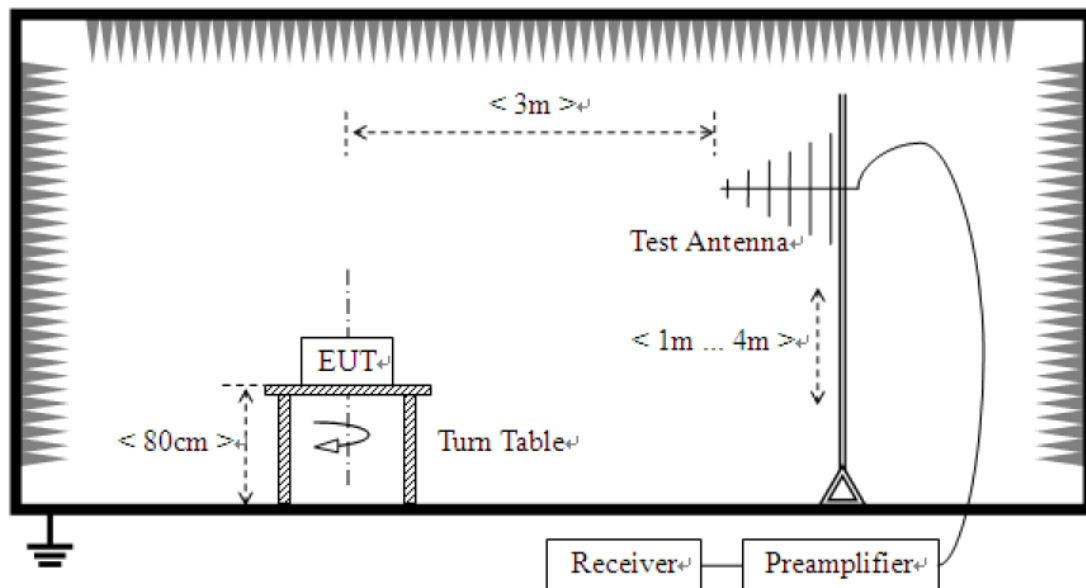


**ATTACHMENT 6 - RADIATED EMISSION TEST RESULTS**

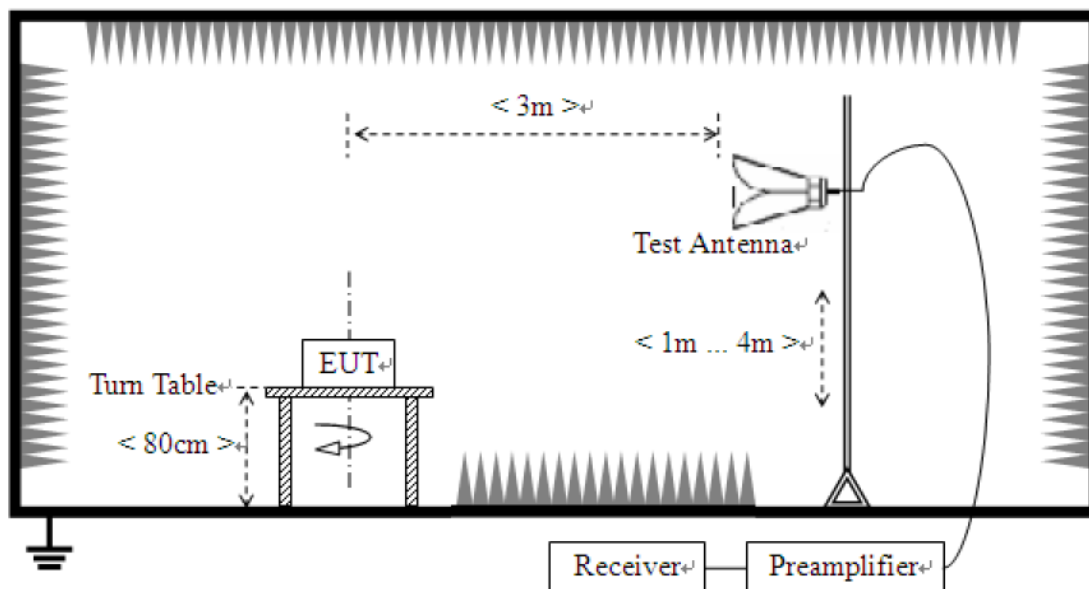
<b>CLIENT:</b>	Guangdong Galanz Enterprises Co Ltd.	<b>TEST STANDERD:</b>	FCC Part 18
<b>MODEL NUMBERS:</b>	P12534(X)(Y)V-(Z) ,P12543(X)(Y)V-(Z)	<b>PRODUCT:</b>	Microwave Oven
<b>MODEL TESTED:</b>	P12534ALV-J9A	<b>EUT DESIGNATION:</b>	Home or Office
<b>TEMPERATURE:</b>	22 °C	<b>HUMIDITY:</b>	63%RH
<b>ATM PRESSURE:</b>	103.0kPa	<b>GROUNDING:</b>	Through AC Power Cord
<b>TESTED BY:</b>	Daomen Guan	<b>DATE OF TEST:</b>	April 15 <sup>th</sup> ,2016
<b>TEST REFERENCE:</b>	ANSI C63.4-2014, FCC/OST MP-5:1986		
<b>TEST PROCEDURE:</b>	<p>The EUT was set up according to the guidelines of ANSI C63.4-2014&amp; FCC MP-5 for radiated emissions. Microwave Oven was placed on a 1m *1.5m nonconductive table. The top of the table is 1.0 m above the ground. The table is placed on a flush mounted metal turntable. An EMI receiver peak scan was made at the frequency measurement range (pre-scan) in an Anechoic chamber. Signal discrimination was then performed and the significant peaks marked. All data was recorded in Quasi-peak detection mode from 30 MHz to 1GHz and average detector mode above 1GHz.</p> <p>The following data lists the significant emission frequencies, measured levels, correction factors (including cable and antenna correction factors), and the corrected readings against the limits. Explanation of the Correction Factor are given as follows:</p> <p>FS= RA + AF + CF - AG</p> <p>Where: FS = Field Strength</p> <p>RA = Receiver Amplitude</p> <p>AF = Antenna Factor</p> <p>CF = Cable Attenuation Factor</p> <p>AG = Amplifier Gain</p>		
<b>TESTED RANGE:</b>	30MHz to 24.5GHz		
<b>TEST VOLTAGE:</b>	120VAC / 60Hz		
<b>RESULTS:</b>	The EUT meet the requirements of test reference for radiated emissions. The test results relate only to the equipment under test provided by client.		
<b>CHANGES OR MODIFICATIONS:</b>	There were no modifications installed by ECMG Electronic Technical Testing Corp (Shenzhen) test personnel.		
<b>M. UNCERTAINTY:</b>	The maximum measurement uncertainty is evaluated as : 30~1000MHz: 3.20dB; 1~25GHz: 3.52dB		



For radiated emissions from 30MHz to 1GHz



For radiated emissions above 1GHz



**Field strength limits for out-of-band emissions :**

For RF output power <500W, Limit at 300m = 27.96dBuV/m

For RF output power >500W, Limit at 300m =  $20\log [25 \cdot \text{SQRT}(\text{Power}/500)] \text{dBuV/m}$

**Test Data :**

<b>30MHz - 1GHz</b>						
Frequency [MHz]	Antenna Polarization [V/H]	Corrected Reading [dB $\mu$ V/m]	Factor (dB)	Field Strength [dB $\mu$ V/m]	Delta, QP [dB]	3 Meters Limits [dB $\mu$ V/m]
89.5420	V	17.11	7.69	24.80	-47.10	71.90
125.4640	V	25.01	7.59	32.60	-39.30	71.90
246.5280	V	17.18	12.52	29.70	-42.20	71.90
124.6520	H	22.81	7.59	30.40	-41.50	71.90
246.5980	H	11.68	12.52	24.20	-47.70	71.90
512.6540	H	0.89	19.51	20.40	-51.50	71.90
Note: 1) All readings are quasi-peak unless stated otherwise, using a bandwidth of 120kHz, with a 60s sweep time. A video filter was not used. 2) Field Strength = Read Level + Factor, Factor = Antenna Factor + Cable Loss - Preamp Factor.						
<b>1GHz - 25GHz</b>						
Frequency [GHz]	Antenna Polarization [V/H]	Corrected Reading [dB $\mu$ V/m]	Factor (dB)	Field Strength [dB $\mu$ V/m]	Delta, AV [dB]	3 Meters Limits [dB $\mu$ V/m]
4.92026	V	48.07	7.69	55.76	-16.14	71.90
7.39264	V	43.41	14.29	57.70	-14.20	71.90
9.88724	V	40.93	18.68	59.61	-12.29	71.90
4.91108	H	43.42	7.69	51.11	-20.79	71.90
7.39682	H	37.30	14.29	51.59	-20.31	71.90
9.90126	H	40.35	18.68	59.03	-12.87	71.90
Note: 1) All readings are average unless stated otherwise, using a bandwidth of 1MHz, with a 60s sweep time. A video filter was not used. 2) Field Strength = Read Level + Factor, Factor = Antenna Factor + Cable Loss - Preamp Factor.						

**Test Equipments List:**

<b>Test Equipment</b>	<b>Manufacturer</b>	<b>Model</b>	<b>Serial No.</b>	<b>Last Cal.</b>	<b>Cal. Due</b>
EMI Receiver	SCHAFFNER	SMR4503	44	2015-10-26	2016-10-26
Horn Antenna	ETS	3115	6587	2014-10-24	2016-10-24
Broadband Antenna	ETS	3142C	00042672	2014-10-24	2016-10-24
Band-pass Filter	Micro-Tronic	BRM50702	030	2015-12-22	2016-12-22
Spectrum Analyzer	R&S	FSP30	100755	2015-11-20	2016-11-20
3m Anechoic chamber	ETS	RFD-F-100	3187	2015-05-20	2017-05-20

*Note: All testing were performed using internationally recognized standards. All test instruments were calibrated and traceable to the National Institute of Standards and Technology (NIST).*

**TESTED BY:****ENGINEER****REVIEWED BY:****SENIOR ENGINEER**

***Radiated Emission Test Set-up (30-1000MHz):***



***Radiated Emission Test Set-up (1-25GHz):***



**\*\*\* End Of Report \*\*\***