

# ***FCC TEST REPORT***

**FCC ID** : UHQKNF-ARTX02

**Applicant** : **MAGIC TIME TECHNOLOGIES LIMITED**  
5-1 FL, NO16, Lane 56, Sec-1, Shin Nan Rd, Chung Ho City, Taipei Hsien,  
Taiwan

**Equipment Under Test (EUT) :**

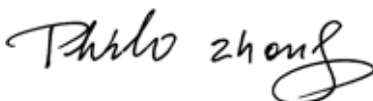
Product description : REMOTE

Model No. : TX077

**Standards** : FCC 15 Subpart C Paragraph 15.231

**Date of Test** : August 9, 2006

**Test Engineer** : Tiger Su

**Reviewed By** : 

PERPARED BY:

**Waltek Services (Shenzhen) Co., Ltd.**

8C, West Tower, Aidi Building, No.5003 Binhe Rd, Futian District, Shenzhen 518045,  
Guangdong, China.

Tel: 86-755-83551033

Fax: 86-755-83552400

2 Contents

	Page
1 COVER PAGE.....	1
2 CONTENTS.....	2
3 TEST SUMMARY.....	5
4 GENERAL INFORMATION.....	6
4.1 CLIENT INFORMATION .....	6
4.2 GENERAL DESCRIPTION OF E.U.T.....	6
4.3 DETAILS OF E.U.T. ....	6
4.4 DESCRIPTION OF SUPPORT UNITS .....	6
4.5 STANDARDS APPLICABLE FOR TESTING.....	6
4.6 TEST FACILITY.....	7
4.7 TEST LOCATION.....	7
5 EQUIPMENT USED DURING TEST .....	8
6 CONDUCTED EMISSION TEST .....	9
6.1 TEST EQUIPMENT.....	9
6.2 TEST PROCEDURE .....	9
6.3 CONDUCTED TEST SETUP .....	10
6.4 EUT OPERATING CONDITION .....	10
6.5 CONDUCTED EMISSION LIMITS .....	11
6.6 CONDUCTED EMISSION TEST RESULT.....	11
7 RADIATION EMISSION TEST.....	12
7.1 TEST EQUIPMENT.....	12
7.2 MEASUREMENT UNCERTAINTY.....	12
7.3 TEST PROCEDURE .....	12
7.4 RADIATED TEST SETUP.....	13
7.5 SPECTRUM ANALYZER SETUP.....	13
7.6 CORRECTED AMPLITUDE & MARGIN CALCULATION .....	14
7.7 SUMMARY OF TEST RESULTS.....	14
7.8 EUT OPERATING CONDITION .....	15
7.9 RADIATED EMISSIONS LIMIT.....	15
7.10 RADIATED EMISSIONS TEST RESULT.....	16
7.10.1 Radiated Emission Test Data .....	16
8 PERIODIC OPERATION.....	18
9 BAND EDGE .....	19
9.1 TEST PROCEDURE .....	19
9.2 BAND EDGE .....	19
9.3 BAND EDGE TEST RESULT .....	20
10 PHOTOGRAPHS OF TESTIN.....	21
10.1 RADIATION EMISSION TEST VIEW FOR 30MHZ-1000MHZ.....	21
10.2 RADIATION EMISSION TEST VIEW FOR 1GHZ-5GHZ.....	21

**11    PHOTOGRAPHS - CONSTRUCTIONAL DETAILS .....22**

    11.1    EUT - FRONT VIEW .....22

    11.2    EUT - BACK VIEW .....22

    11.3    PCB-FRONT VIEW .....23

    11.4    PCB-BACK VIEW.....23

**12    FCC ID LABEL .....24**

### 3 Test Summary

Test	Test Requirement	Test Method	Class / Severity	Result
Radiated Emission (30MHz to 5GHz)	FCC PART 15: 2003	ANSI C63.4: 2003	Class B	PASS
Conducted Emission (150KHz to 30MHz)	FCC PART 15: 2003	ANSI C63.4: 2003	Class B	N/A

## 4 General Information

### 4.1 Client Information

Applicant:	<b>MAGIC TIME TECHNOLOGIES LIMITED</b>
Address:	5-1 FL, NO16, Lane 56, Sec-1, Shin Nan Rd, Chung Ho City, Taipei Hsien, Taiwan
Manufacturer:	<b>LIBERTY TECHNOLOGY(SHANG HAI)CO.,LTD</b>
Address:	No.3, Lane 1511, Xinge Road, Xinqiao Town, Songjiang, Shanghai, China

### 4.2 General Description of E.U.T.

Product description:	REMOTE
Model No.:	TX077

### 4.3 Details of E.U.T.

Power Supply:	12 VDC Battery
---------------	----------------

### 4.4 Description of Support Units

The EUT has been tested as an independent unit.

### 4.5 Standards Applicable for Testing

The customer requested FCC tests for a REMOTE. The standards used were FCC 15 Paragraph 15.231, Paragraph 15.205, Paragraph 15.31, Paragraph 15.33, Paragraph 15.35.

#### **4.6 Test Facility**

The test facility is recognized, certified, or accredited by the following organizations:

- **FCC – Registration No.: 662850**

SGS-CSTC Standards Technical Services Co., Ltd. ShenZhen Branch EMC Lab, EMC Laboratory has been registered and fully described in a report filed with the (FCC) Federal Communications Commission. The acceptance letter from the FCC is maintained in our files. Registration 662850, November 17, 2003.

#### **4.7 Test Location**

All Emissions tests were performed at:-

No.1 Workshop, M-10, Middle Section, Science & Technology Park, ShenZhen, China 518057

## 5 Equipment Used during Test

Equipment	Brand Name	Model	Cal. Int Months	Last Cal. Date
<b>3m Anechoic chamber</b>				
EMC Analyzer	Agilent	E7402A	12	2005-08-30
EMI Test Receiver	R&S	ESS	12	2005-08-30
Pre Amplifier	Anritsu	MH648A	12	2005-08-30
Bilog Antenna	SCHAFFNER	CBL6111C	12	2005-08-30
Horn Antenna	ETS.LINDGERN	GH14-H052	12	2005-08-30
AM/FM Stereo Signal Generator	Panasonic	VP-8122A	12	2005-08-30
Signal Generator	R&S	SMG	12	2005-08-30
RF Selector	TOYO	NS4901A	-	-
Turn Disc	HD	DS4150S	-	-
Antenna Mast	HD	MA2400	-	-
<b>EMI Shielded Room</b>				
Spectrum analyzer	ADVANTEST	R3261C	12	2005-08-30
EMI Test Receiver	R&S	ESS	12	2005-08-30
Pre Amplifier	Anritsu	MH648A	12	2005-08-30
LISN	R&S	ENV216	12	2005-08-30
LISN	Kyoritsu	KNW-403D	12	2005-08-30
Absorbing Clamp	R&S	MDS-21	12	2005-08-30
Distortion Meter	MEGURO	MAK-6578A	12	2005-08-30
AM/FM Stereo Signal Generator	Panasonic	VP-8122A	12	2005-08-30
Oscilloscope	LEADER	LS1020	12	2005-08-30
Function Generator	National	VP-7422A	12	2005-08-30
Signal Generator	R&S	SMG	12	2005-08-30
RF Selector	TOYO	NS4000	-	-
Remote Controller	TOYO	MAC	-	-

## 6 Conducted Emission Test

Product Name:	REMOTE
Test Requirement:	FCC Part15 Paragraph 15.207
Test Method:	Based on FCC Part15 Paragraph 15.207
Test Date:	.....
Frequency Range:	150kHz to 30MHz
Class:	Class B
Detector:	Peak for pre-scan (9kHz Resolution Bandwidth) Quasi-Peak & Average if maximised peak within 6dB of Average Limit

### 6.1 Test Equipment

Please refer to Section 5 this report.

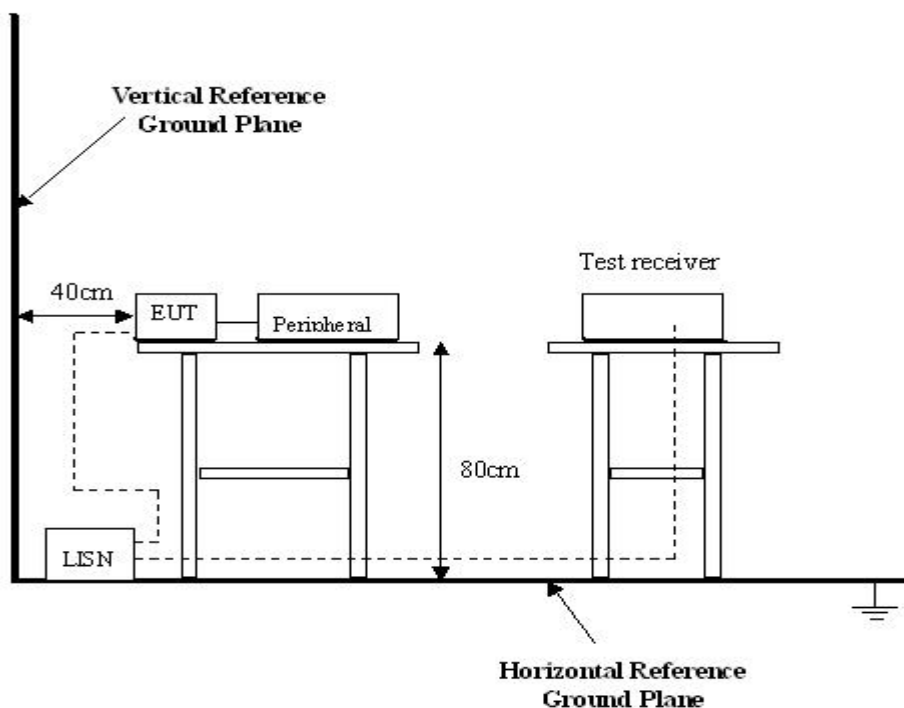
### 6.2 Test Procedure

1. The EUT was tested according to ANSI C63.4: 2003. The frequency spectrum from 150kHz to 30MHz was investigated.
2. The maximised peak emissions from the EUT was scanned and measured for both the Live and Neutral Lines. Quasi-peak & average measurements were performed if peak emissions were within 6dB of the average limit line.



### 6.3 Conducted Test Setup

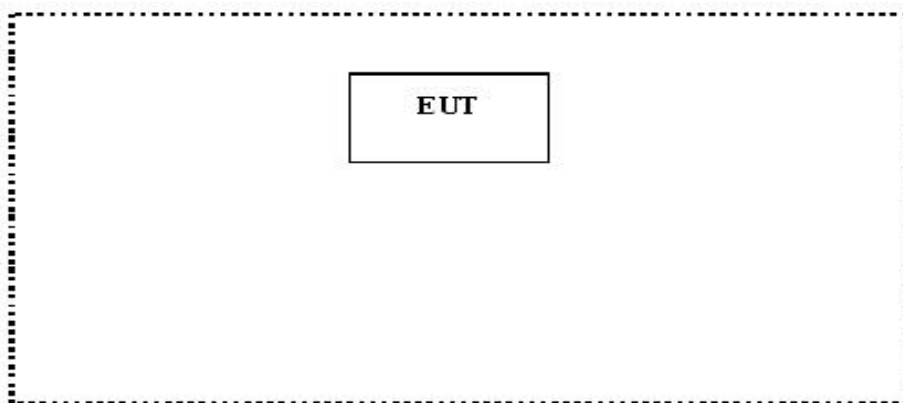
The conducted emission tests were performed using the setup accordance with the ANSI C63.4: 2003, The specification used in this report was the FCC Part15 Paragraph 15.207 limits.



### 6.4 EUT Operating Condition

Operating condition is according to ANSI C63.4: 2003.

- A. Setup the EUT and simulators as shown on follow.
- B. Enable RF signal and confirm EUT active.
- C. Modulate output capacity of EUT up to specification.



## 6.5 Conducted Emission Limits

66-56 dB $\mu$ V/m between 0.15MHz & 0.5MHz

56 dB $\mu$ V/m between 0.5MHz & 5MHz

60 dB $\mu$ V/m between 5MHz & 30MHz

**Note:** In the above limits, the tighter limit applies at the band edges.

## 6.6 Conducted Emission Test Result

Owing to the DC operation of EUT, this test is not performed.

## 7 Radiation Emission Test

Product Name:	REMOTE
Test Requirement:	FCC Part15 Paragraph 15.231
Test Method:	Based on FCC Part15 Paragraph 15.33
Test Date:	August 9, 2006
Frequency Range:	30MHz to 5GHz
Measurement Distance:	3m
Detector:	Peak for pre-scan (120kHz resolution bandwidth) Quasi-Peak if maximised peak within 6dB of limit

### 7.1 Test Equipment

Please refer to Section 5 this report.

### 7.2 Measurement Uncertainty

All measurements involve certain levels of uncertainties, especially in the field of EMC. The factors contributing to uncertainties are spectrum analyzer, cable loss, antenna factor calibration, antenna directivity, antenna factor variation with height, antenna phase center variation, antenna factor frequency interpolation, measurement distance variation, site imperfections, mismatch (average), and system repeatability.

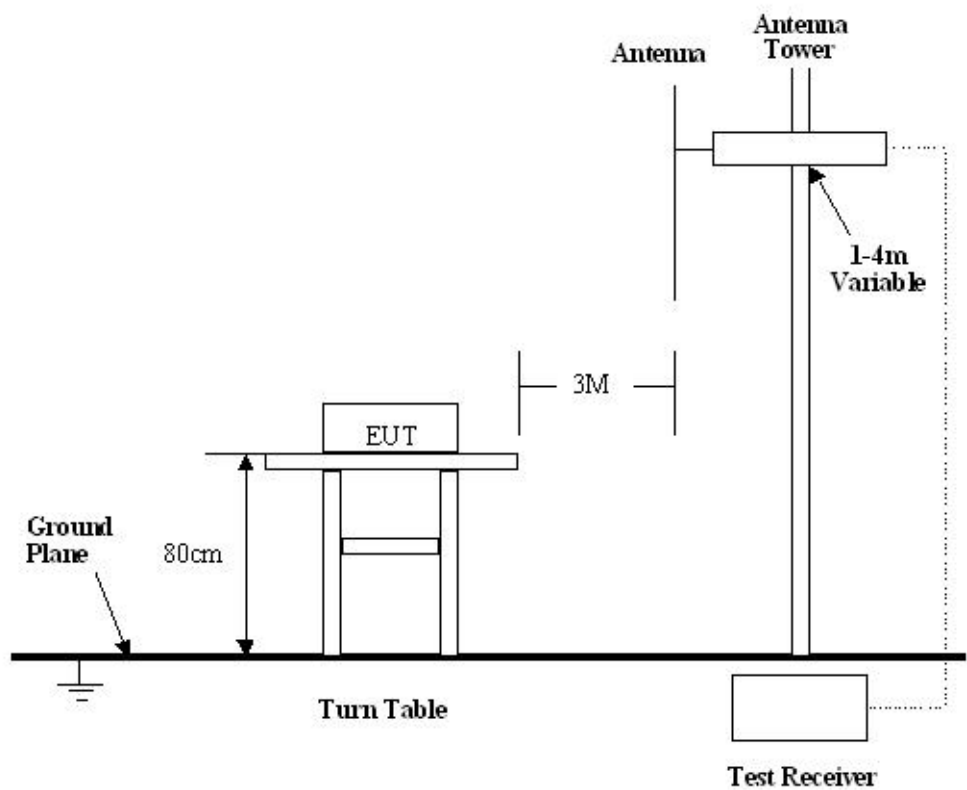
Based on ANSI C63.4: 2003, The Treatment of Uncertainty in EMC Measurements, the best estimate of the uncertainty of a radiation emissions measurement at SGS EMC Lab is +4.0 dB.

### 7.3 Test Procedure

1. For the radiated emissions test, since the EUT does not have a power source, there was no connection to AC outlets.
2. Maximizing procedure was performed on the six (6) highest emissions to ensure EUT is compliant with all installation combinations.
3. All data was recorded in the peak detection mode. Quasi-peak readings was performed only when an emission was found to be marginal (within -4 dB $\mu$ V of specification limits), and are distinguished with a "Qp" in the data table.
4. The EUT was under normal mode during the final qualification test and the configuration was used to represent the worst case results.

7.4 Radiated Test Setup

The radiated emission tests were performed in the 3m Semi- Anechoic Chamber test site, using the setup accordance with the ANSI C63.4: 2003, The specification used in this report was the FCC Part15 Paragraph 15.231, Paragraph 15.209 limits.



7.5 Spectrum Analyzer Setup

According to FCC Part15 Paragraph 15.231 Rules, the system was tested to 5000 MHz.

Start Frequency .....30 MHz  
Stop Frequency .....5000 MHz  
Sweep Speed Auto  
IF Bandwidth .....100 kHz  
Video Bandwidth .....1 MHz  
Quasi-Peak Adapter Bandwidth .....120 kHz  
Quasi-Peak Adapter Mode.....Normal  
Resolution Bandwidth .....1MHz

## 7.6 Corrected Amplitude & Margin Calculation

The Corrected Amplitude is calculated by adding the Antenna Factor and Cable Factor, and subtracting the Amplifier Gain from the Amplitude reading. The basic equation is as follows:

$$\text{Corr. Ampl.} = \text{Indicated Reading} + \text{Antenna Factor} + \text{Cable Factor} - \text{Amplifier Gain}$$

The “**Margin**” column of the following data tables indicates the degree of compliance with the applicable limit. For example, a margin of -7dB $\mu$ V means the emission is 7dB $\mu$ V below the maximum limit for Class B. The equation for margin calculation is as follows:

$$\text{Margin} = \text{Corr. Ampl.} - \text{Class B Limit}$$

## 7.7 Summary of Test Results

According to the data in section 7.10, the EUT complied with the FCC Part15 Paragraph 15.231 standards.

7.8 EUT Operating Condition

Same as section 6.4 of this report.

7.9 Radiated Emissions Limit

Fundamental frequency (MHz)	Field strength of fundamental (microvolts/meter)	Field strength of spurious emissions (microvolts/meter)
40.66-40.70.....	2,250.....	225
70-130.....	1,250.....	125
130-174.....	\1\ 1,250 to 3,750	\1\ 125 to 375
174-260.....	3,750.....	375
260-470.....	\1\ 3,750 to 12,500.	\1\ 375 to 1,250
Above 470.....	12,500.....	1,250

7.10 Radiated Emissions Test Result

Formula of conversion factors:the field strength at 3m was egtablished by adding  
The meter reading of the spectrum analyer (which is set to read in units of dBuV)  
To the antenna correction factor supplied by the antenna manufacturer. The antenna  
Correction factors are stared in terms of dB.The gain of the pressletor was accounted  
For in the spectrum analyser meter reading.

Example:

Freq(MHz) Meter Reading +ACF=FS  
33            20dBuV+10.36dB=30.36dBuV/m @3m

7.10.1 Radiated Emission Test Data

Test Item:	Radiated Emission Test Data
Test Voltage:	12 VDC
Test Mode:	TX On
Temperature:	24 °C
Humidity:	52%RH
Test Result:	PASS

Frequency (MHz)	Antenna Polarization	Emission Level (dBuV/m)	FCC 15 Subpart C Limit (dBuV/m)	Margin (dB)	Antenna Height (m)	Turntable Angle (°)
433.92	Vertical	74.53	80.82	6.29	1.5	90
433.92	Horizontal	75.24	80.82	4.76	1.5	90
867.84	Vertical	39.43	46.00	6.57	1.2	90
1301.76	Vertical	36.66	54.00	17.34	2.0	180
1735.68	Vertical	26.78	54.00	27.22	1.8	60
2169.60	Vertical	20.57	54.00	33.43	2.0	45
867.84	Horizontal	40.89	46.00	5.11	1.5	45
1301.76	Horizontal	38.30	54.00	15.70	1.6	60
1735.68	Horizontal	27.71	54.00	26.29	2.0	180
2169.60	Horizontal	22.39	54.00	31.61	2.0	90

Where F is the frequency in MHz, The formulas for calculating the maximum permitted fundamental field strengths are as follows:

- (1). For the band 130-174MHz,  $\mu\text{V/m}$  at 3 meters  $= 56.81818(F) - 6136.3636$ ;
- (2). For the band 260-470MHz,  $\mu\text{V/m}$  at 3 meters  $= 41.6667(F) - 7083.3333$ .

Sample calculation of limit @ 418MHz

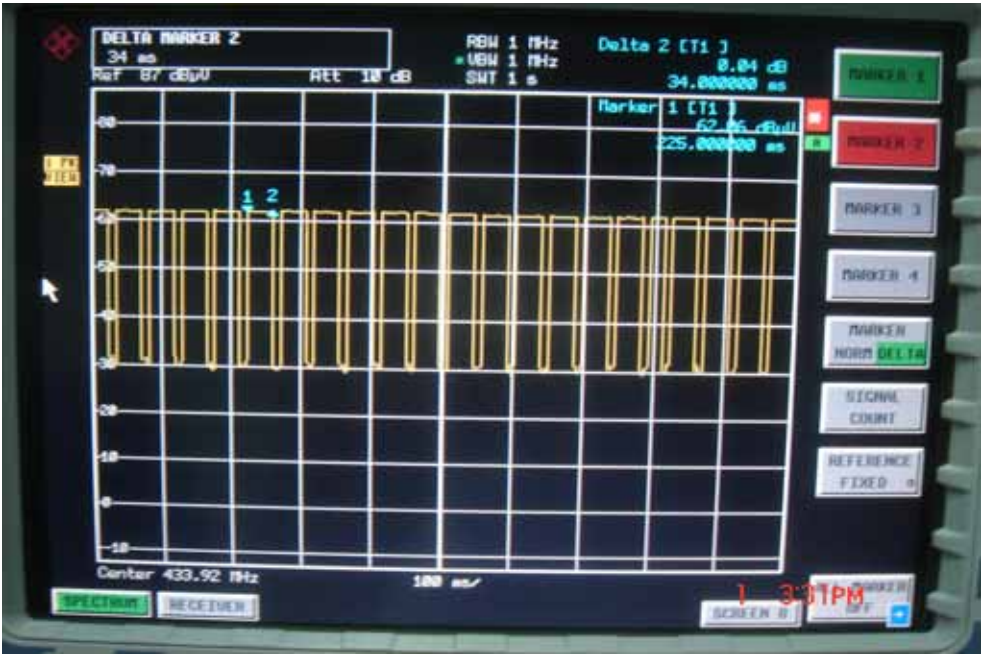
$$41.6667(418) - 7083.3333 = 10333.3473 \mu\text{V/m}$$

$$20\log(10333.3473) = 80.28 \text{ dBuV/m limit @ 418MHz}$$



8 Periodic Operation

Refer to the duty cycle plot (as below),This device does meet the FCC requirement.



## 9 Band Edge

Test Requirement:	FCC Part15 C
Test Method:	Based on FCC Part15 Paragraph 15.231
Test Date:	August 9, 2006
Test mode:	TX On
Temperature:	24 °C
Humidity:	52%RH

### 9.1 Test Procedure

1. The EUT, peripherals were put on the turntable which table size is 1mX1.5m, table high 0.8m. All set up is according to ANSI C63.4: 2003.
2. The bandwidth of the fundamental frequency was measure by spectrum analyser with 100KHz RBW and 100KHz VBW. The 20dB bandwidth is defined as the total spectrum the power of which is higher than peak power 20dB.

### 9.2 Band Edge

Requirements: The bandwidth of the emission shall be no wider than 0.25% of the center frequency for devices operating above 70 MHz and below 900 MHz. For devices operating above 900 MHz, the emission shall be no wider than 0.5% of the center frequency. Bandwidth is determined at the points 20 dB down from the modulated carrier.

9.3 Band Edge Test Result  
433.92MHz TX



## **10 Photographs of Testin**

### **10.1 Radiation Emission Test View For 30MHz-1000MHz**



### **10.2 Radiation Emission Test View For 1GHz-5GHz**

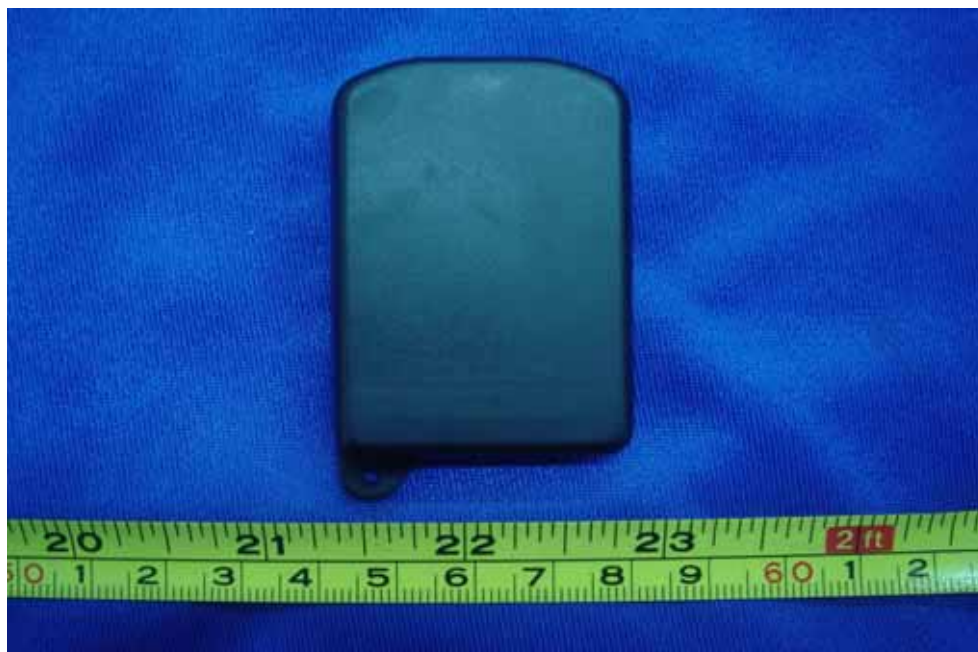


## 11 Photographs - Constructional Details

### 11.1 EUT - Front View

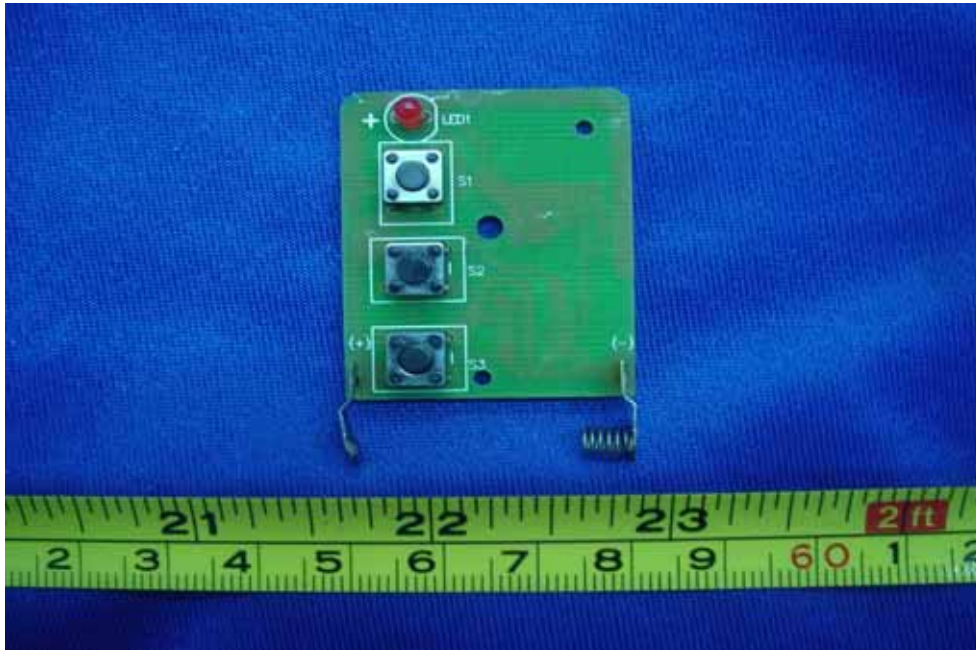


### 11.2 EUT - Back View

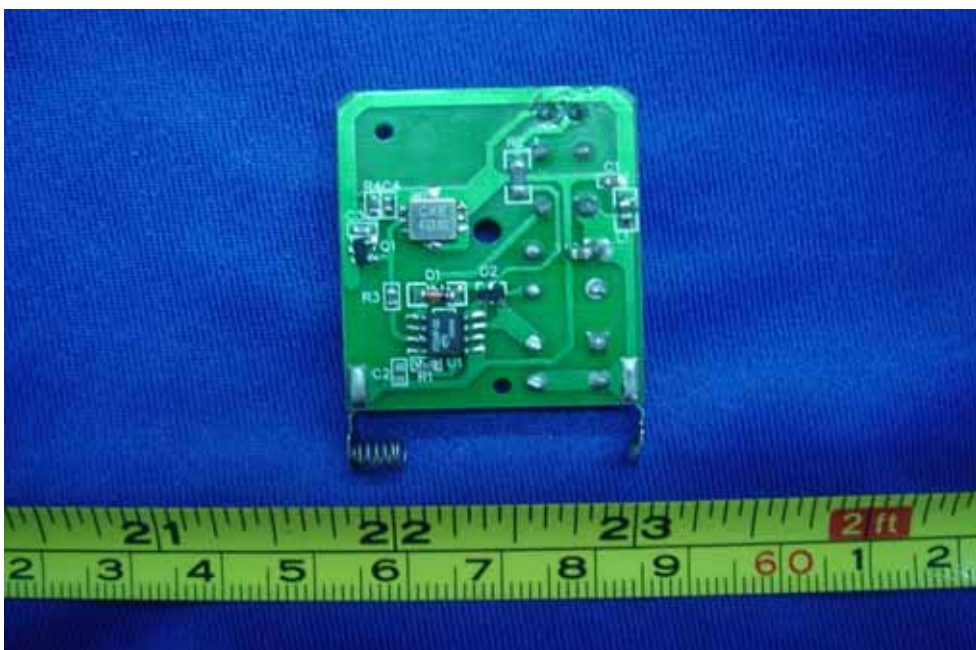




### 11.3 PCB-Front View



### 11.4 PCB-Back View



## 12 FCC ID Label

This device complies with Part 15 of the FCC Rules. Operation is subject to the following two conditions: (1) this device may not cause harmful interference, and (2) this device must accept any interference received, including interference that may cause undesired operation.

The Label must not be a stick-on paper. The Label on these products must be permanently affixed to the product and readily visible at the time of purchase and must last the expected lifetime of the equipment not be readily detachable.

Proposed Label Location on EUT  
EUT Bottom View/proposed FCC Mark Location

