

1. Getting Started	4
1.1 USB handset outlook	4
1.2 Charging the Battery	5
1.3 Switch the wireless handset On / Off	6
1.4 LCD outlook	6
1.5 Icon indications (PC side)	7
1.6 LED light indication for the USB Dongle	7
2 Driver Installation and Handset Set ups	8
2.1 Driver Installation	8
2.1.1 Step-by-Step Driver installations	8
2.1.2. Synchronization between PC and handset	10
2.1.3 Manual Synchronize name lists between PC and handset	11
3. Using the wireless USB handset	12
3.1 Basic operating functions	12
3.1.1 Volume setup	12
3.1.2 Skype™ User Status setup	13
3.1.3 Language Setup	14
3.1.4 Ring Tone Setup	15
3.1.5 Ring Volume Setup	16
3.1.6 LCD Contrast Setup	17
3.1.7 LCD backlight time Setup	18
3.1.8 Factory Default Setup	19
3.1.9 Update list - Synchronize name list with PC	20
3.1.10 Paring up - USB phone and Dongle	21
3.2 Using Skype™ to make calls	22
3.2.1 Making calls from Name lists in handset	22
3.2.1.1 Contact person status	24
3.2.2 Making Conference calls from name lists in handset	24
3.2.3 Making Skype™ Out from handset	26
3.2.4 Making Speed dial from handset	27
3.3 Using Handset to remote control Skype™ software	28
3.4 Calling History	29
4 Using Utility Control	30
4.1 Utility control panel	30
4.1.1 Device Setup	30
4.1.2 Favorite Website	31

5. Assigning PC Audio to PC Speakers.....	32
6. Package and accessories	33
7. Technical Specification.....	34
8. Technical problem / Q & A.....	35

Safety Instruction:

Please read this section carefully before start using wireless USB handset for Skype™.

Battery Safety Instructions

- Do not burn, disassemble, strike or mutilate the battery. The battery contains toxic materials that could release, resulting in injury.
- There is a risk of explosion if you replace the battery with an incorrect battery type. Use only the battery that came with your phone.
- Remove batteries if storing over 30 days.
- Do not short circuit battery.
- Do not dispose the battery in fire that could result in explosion.
- Use specified chargers only.
- Keep out of the reach of children.

The rechargeable battery must be disposed of properly and may need to be recycled. Refer to your battery's label for battery type. Contact your local recycling center for proper disposal methods.

Disposal of the device

Some of the product material can be reuse if you bring them to a recycling point. Please contact your local authorities in case you need more information on the collection points in your area.

Cleaning

Clean the headsets with a slightly damp cloth or with an anti-static cloth. Please do not use abrasive solvent for cleaning purpose.

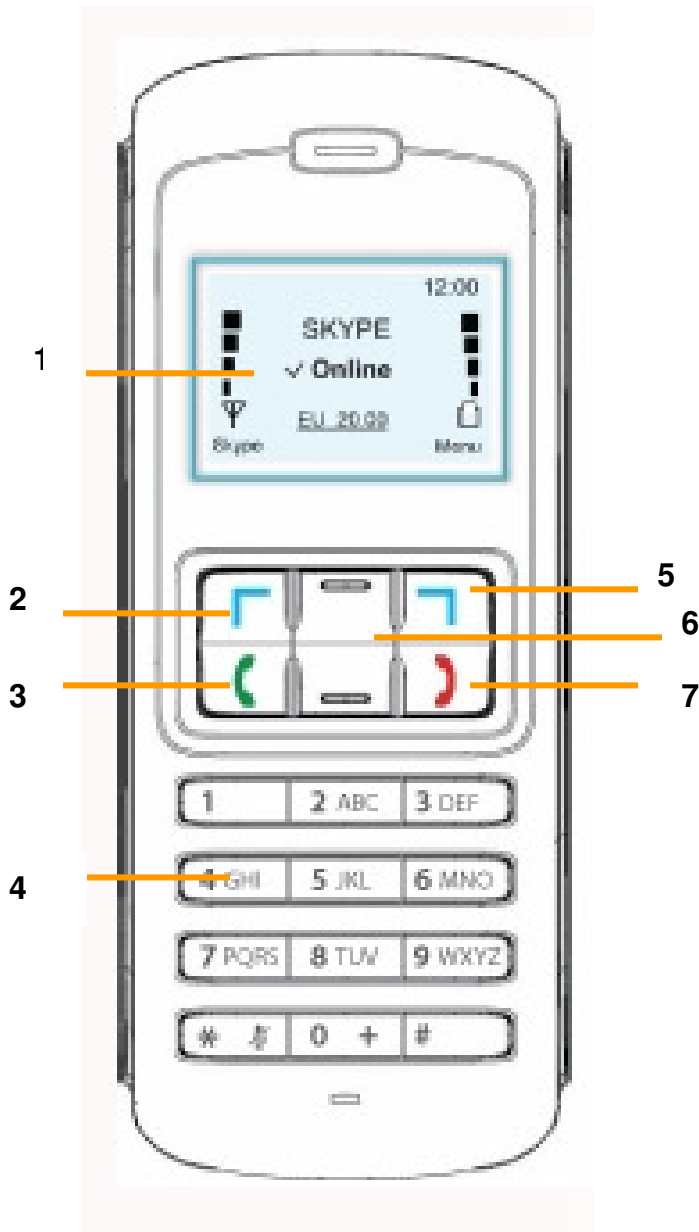
WARNING:

Skype™ software does not support calls to any emergency number nor emergency service (e.g. 211, 911, 999 etc). To perform calls of this type please make sure to use a landline telephone or a cellular/mobile phone.

1. Getting Started

This section provides the information about the wireless USB handset and step-by-step instructions for using the wireless USB headset.

1.1 USB handset outlook:



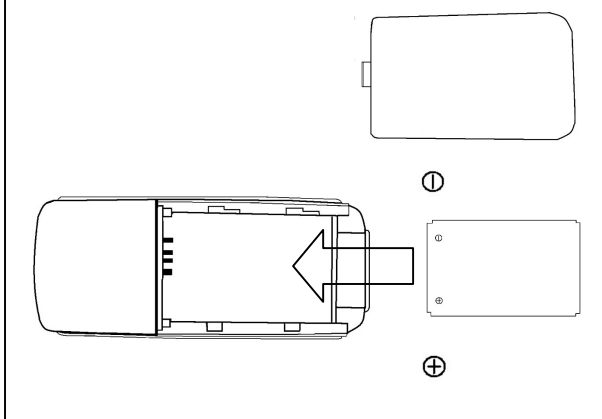
- 1. LCD Display.
- 2. Skype™ / Tab / Select Button.
- 3. Answer / Call / Hold / History Button.
- 4. Numeric / Mute Keys.
- 5. Menu / Exit Button
- 6. Up/Down / Name List /
Speaker Volume Control :
- 7. Power On / Off / Call Ending /
Delete Button.

1.2 Charging the Battery:

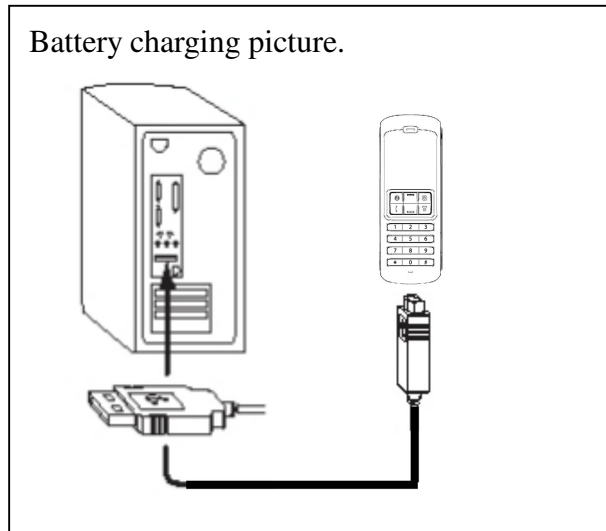
Before you use the wireless Skype™ handset for the first time, you must make sure that the battery is fully charged. For battery charging, do the following:

- a) Open the battery compartment.
- b) Insert the battery as indicated. (See below)
- c) Your PC or notebook must be in "Power on" status.
- d) Plug the USB cord charger into the Wireless Skype™ phone and connect to the USB jack of your PC or notebook.

Battery Insert picture.

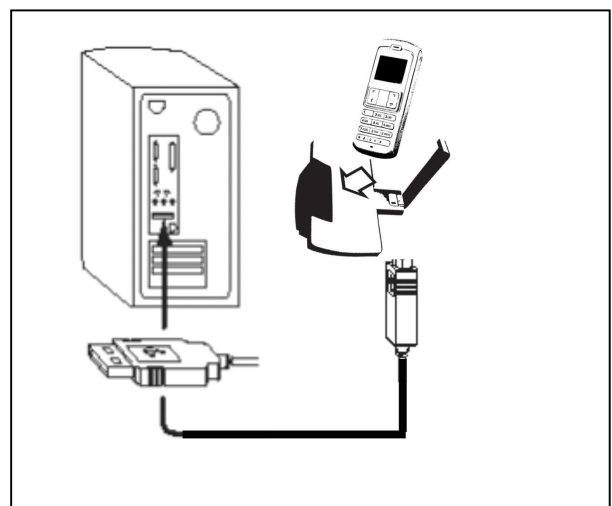


Battery charging picture.

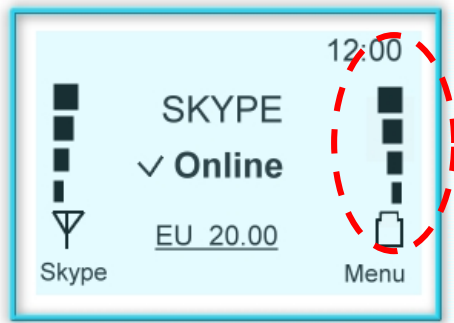


OPTIONAL:

Place the USB Wireless Phone on the charging cradle. Connect the USB cord in the back of the cradle to start charging.



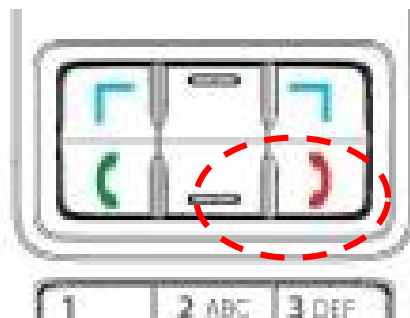
While charging, the battery indicator bar will show the progress of charging in the LCD display.



Icon	Description
	Battery power : 65% ~ 100%
	Battery power : 35% ~ 65%
	Battery power: less than 35%
	LOW Battery. Need to charge.

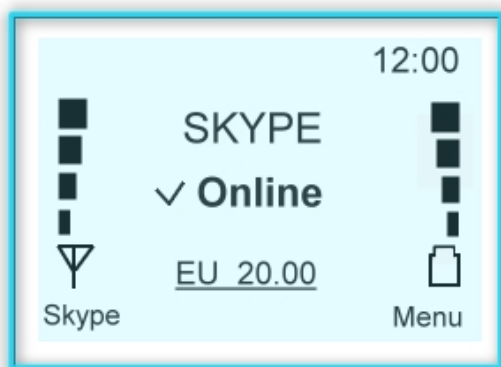
1.3 Switch the wireless handset On / Off:

In order to achieve longer talking/standby hours, it is recommended switching off the handset when the PC is shut down for power saving purpose. To switch the handset On/Off:



- Press the call ending button on the handset for 3~5 consecutive seconds.
- A "Beep" tone and the LCD display on/off indicate the on/off status.








1.4 LCD outlook:



Handset Standby Status:

1.5 Icon indications (PC side)

You will find an icon appear in the tool bar of your PC or notebook. Each icon indicates different status of the wireless handset:

ICON	Phone status indication
	Failure to establish connection between handset and the Dongle. Please check if the handset is power "ON" and the Dongle is properly installed in the USB jack.
	2 or more Dongle are found. Please remove the excess Dongle.
	Unable to find Dongle.
	No driver is installed or, system can't find driver.
	Phone is in STAND BY Mode.
	Recharging battery.
	Low in battery. Please recharge the battery. (See section 1.2 for detail)

1.6 LED light indication for the USB Dongle

There is a LED light on the USB Dongle. The flashing of the LED light indicates:

Flashing style	Status Indication
Rapidly	Connection has just been established.
Flash in every 1.5 sec.	Connection established and the handset is read to use.
Short flash in every 3 sec.	Searching for handset. (Unit paring up in progress)
No flash	PC or Notebook is power off. No connection established.

2. Driver Installation and Handset Set ups.

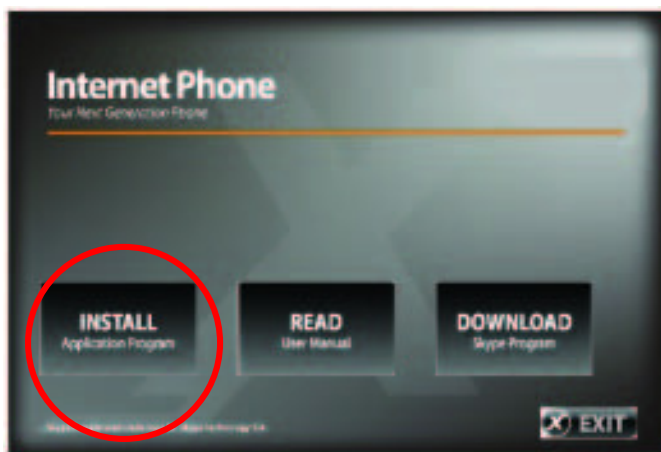
This section provides the step-by-step instructions for driver installation and setups for the wireless USB handset setups.

2.1 Driver Installation:

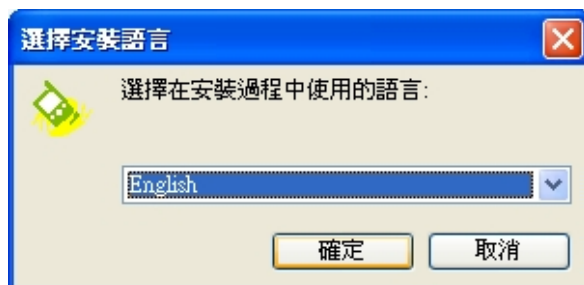
Before using the wireless USB handset, the driver must be installed first. Please follow the installation procedures appear in the PC screen.

2.1.1 Step-by-Step Driver installations:

Step1: Please follow below indicated procedures to install the Driver for wireless USB handset.



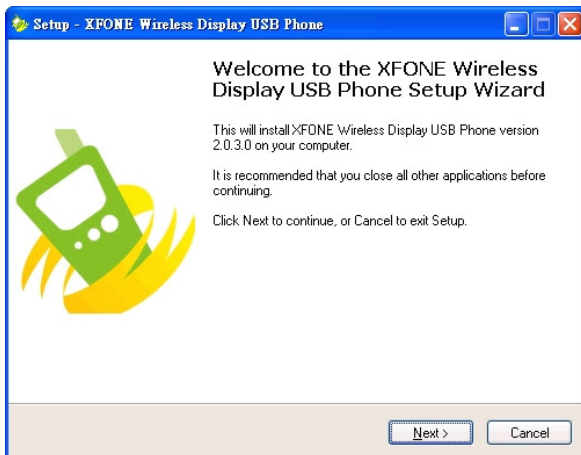
Step 2: Select language:



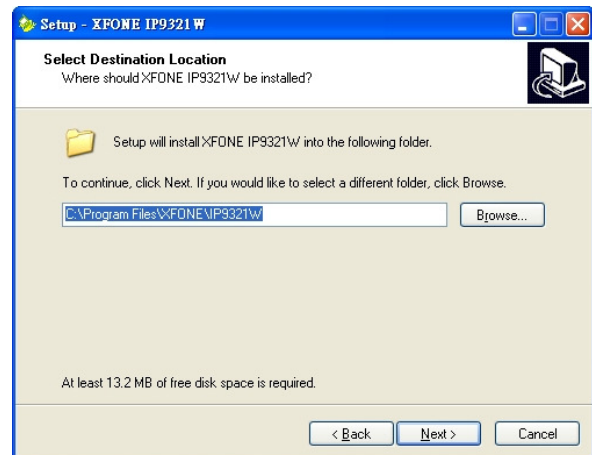
Language is preset following the language set in the windows' OS. If the windows' preset language is not recognizable, the language in this selection will be set in English.

Step 3: Select "NEXT" to proceed.

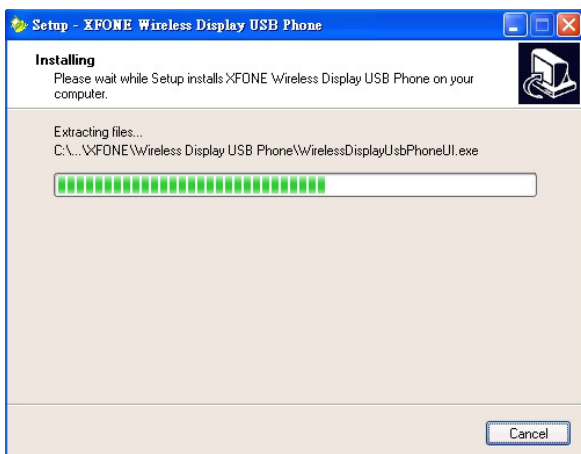
a) Welcome page.



b) Select disk



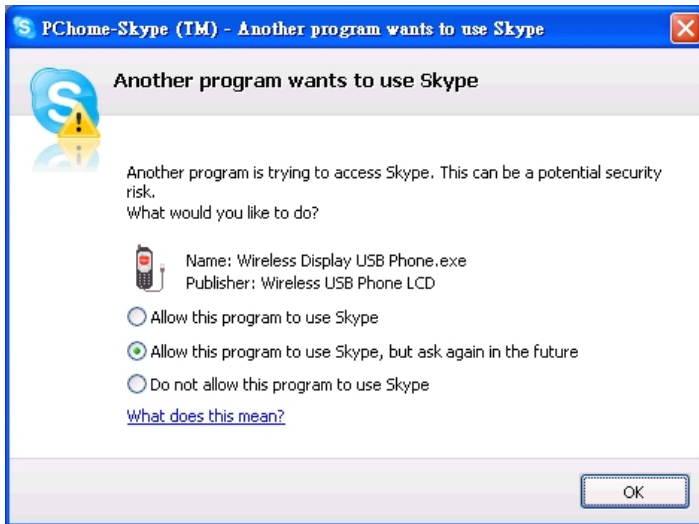
c) Installation



d) Completed



Step 4: Another Program wants to use Skype™



When Driver installed completed, this message will show if Skype™ program is activated. Select “Allow this program to use Skype™”.

2.1.2. Synchronization between PC and handset:

Once the driver is installed and the Skype™ program has been properly set (Section 2.1.1.), please connect the dongle to your PC / Laptop for phone set up.



PC side will show this icon if dongle is not plug-in.



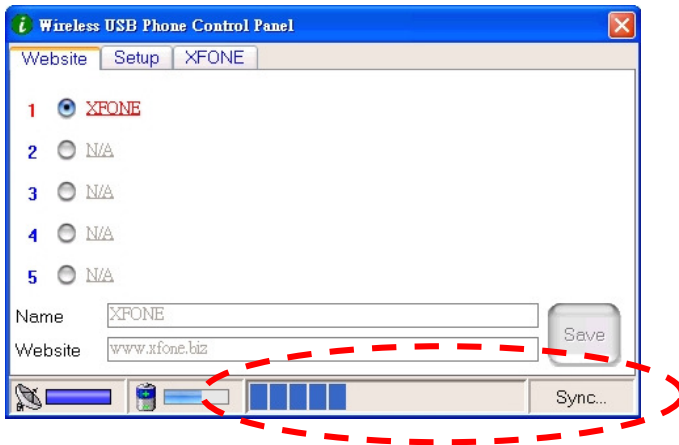
PC side will show this icon if dongle is plug-in.

Remark:

a) Please make sure the wireless handset is in “Power ON” status. (see 1.3 for detail)

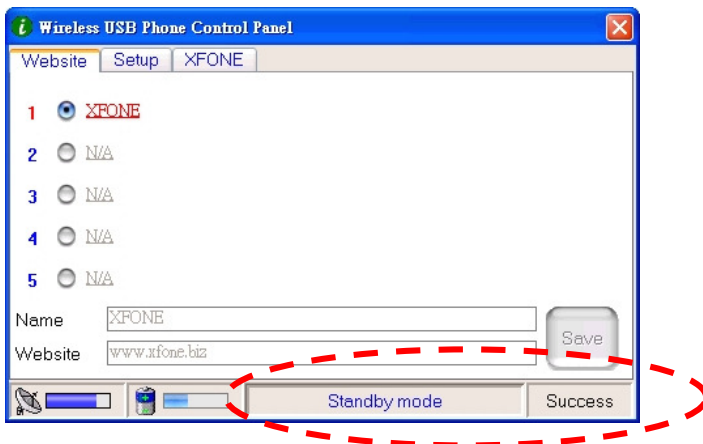
The Utility window will pop-up and show the “Synchronizations” process with PC when dongle plug in the USB slot (for the **1st time** after driver installed) and the handset is in Power On status

a) Synchronization in progress.



Remark: Please **DO NOT** remove dongle nor power off handset while “Sync” is in process.

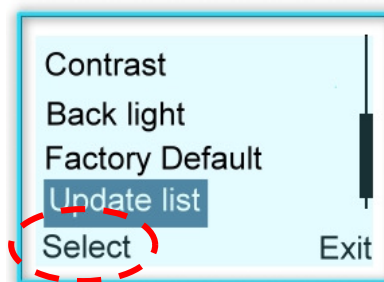
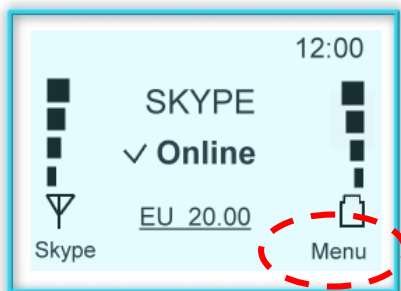
b) Synchronization successful.



Remark: It will take few seconds for handset to completed name list updating.

2.1.3. Manually Synchronize name lists between PC and handset:

Manual synchronization can also be done by following steps: (Also refer to Section3.1.9)



Remark: Please ensure Skype™ program, Driver, dongle and handset are in operative status.

3. Using the wireless USB handset

This section provides you the basic functions of the wireless USB handset.

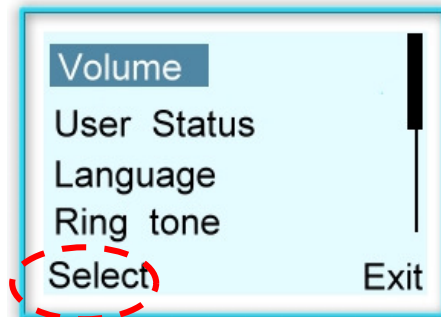
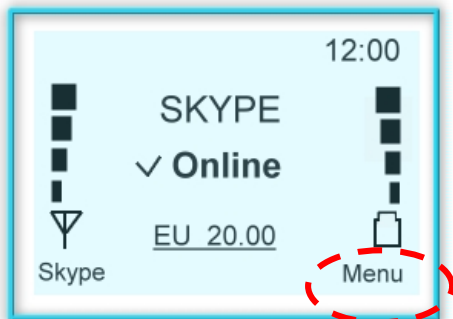
3.1 Basic handset operating functions

3.1.1 Volume setup

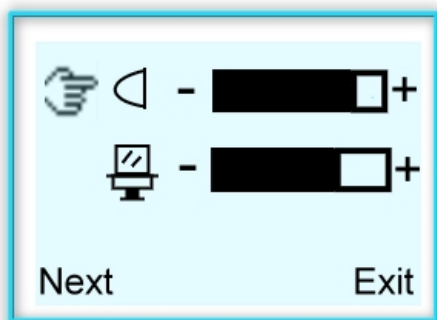
Speak and Microphone volume can be adjusted by the following steps:

a) Press “Menu” to enter Menu mode.

b) Scroll up and down to “Volume” and press “Select”.



c) Using “Up and Down” key for adjusting Speaker and Microphone volume. Press “Next” to select device or “Exit” to exit.

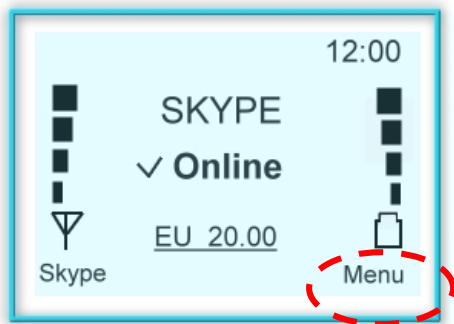


Remark: The Volume may also be adjusted when there is a call in progress. While on the call, press UP / DOWN button to adjust.

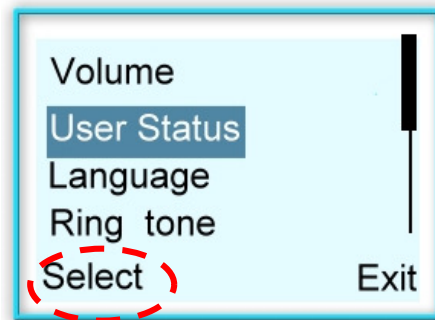
3.1.2 Skype™ User Status setup

Skype™ user status can be modified by handset by the following steps:

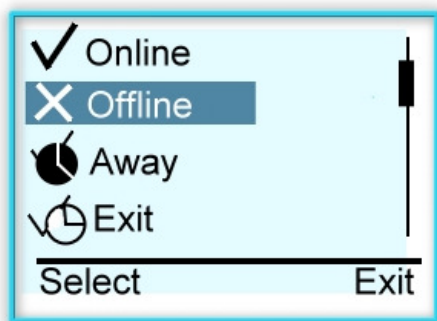
a) Press “Menu” to enter Menu mode



b) Scroll up and down to “User Status” and press “Select”



c) Using “Up/Down” key for modifying the user’s status. Press “Select” to confirm or “Exit” to exit.

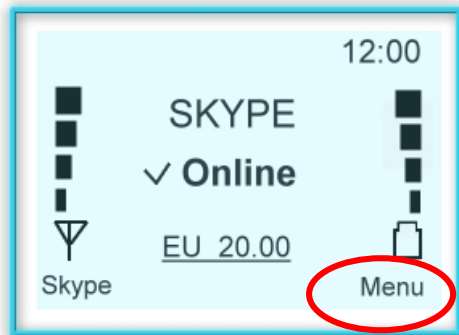


Remark: In order to select the user status, please ensure that Skype™ program, driver, handset and dongle are in operative status.

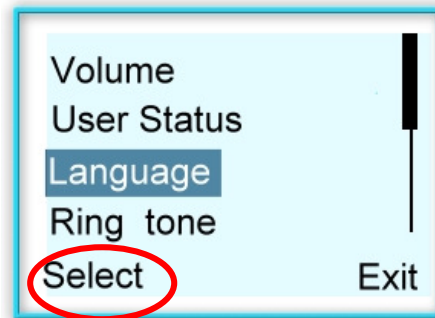
3.1.3 Language setup – Handset only

Handset language can be modified by the following steps:

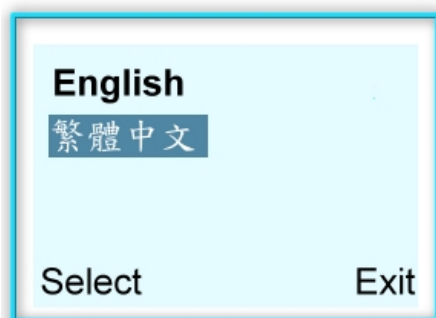
a) Press “Menu” to enter Menu mode.



b) Scroll up and down to “Language” and press “Select”.



c) Using “Up/Down” key for selecting the languages pre-set in the handset. Press “Select” to conform or “Exit” to exit.

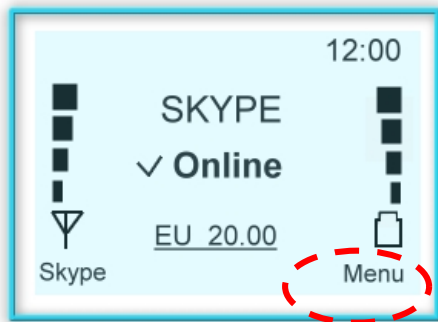


Remark: The language in the language setup functions is pre-set function by OEM customers.

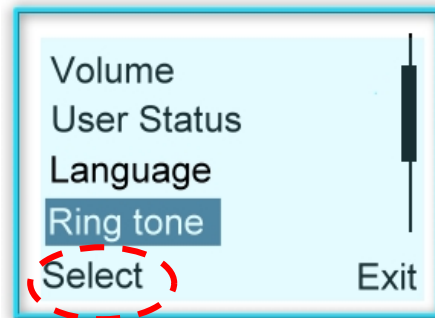
3.1.4 Ring tone setup

15 kinds of ring tone can be selected by the following steps:

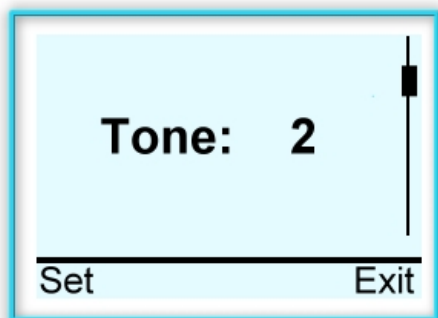
a) Press “Menu” to enter Menu mode



b) Scroll up and down to “Ring tone” and press “Select”



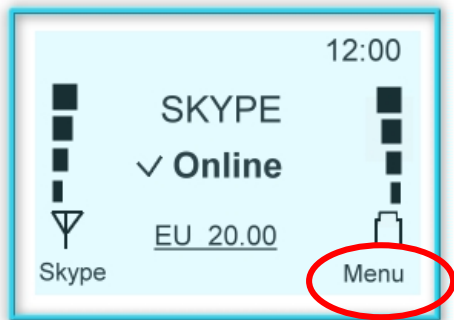
c) Using “Up and Down” key for ring tone selection. Press “Set” to select or “Exit” to exit.



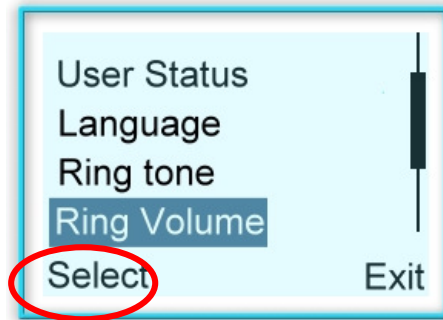
3.1.5 Ring Volume setup

The Ring tone volume can be modified the following steps:

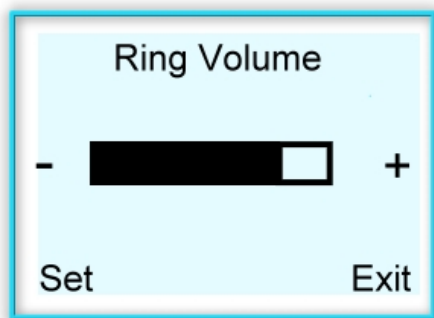
a) Press “Menu” to enter Menu mode



b) Scroll up and down to “Ring Volume” and press “Select”

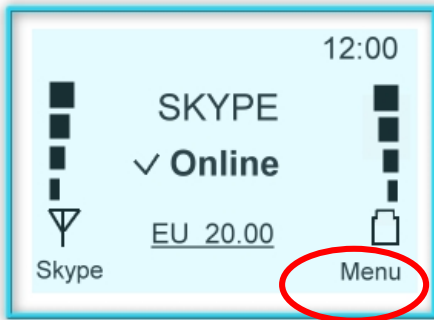


c) Using “Up and Down” key for ring tone selection. Press “Set” to select or “Exit” to exit.

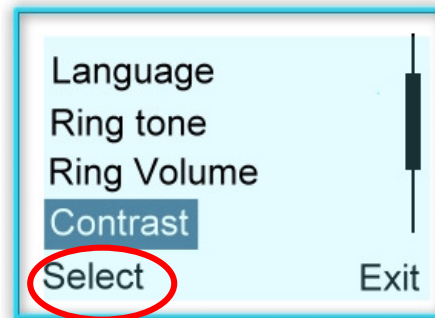


3.1.6 LCD Contrast setup

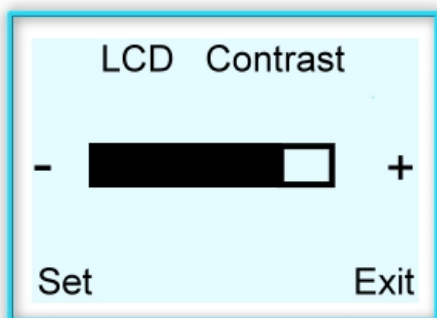
a) Press “Menu” to enter Menu mode



b) Scroll up and down to “Contrast” and press “Select”

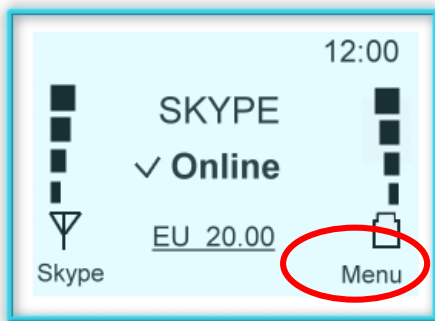


c) Using “Up and Down” key ring tone selection.
Press “Set” to select or “Exit” to exit.

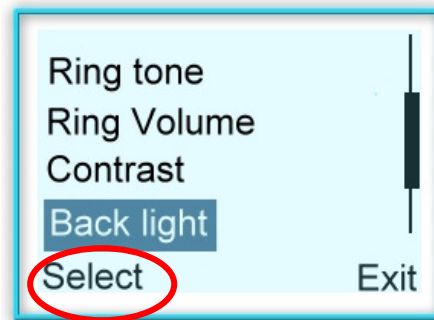


3.1.7 LCD backlight time setup

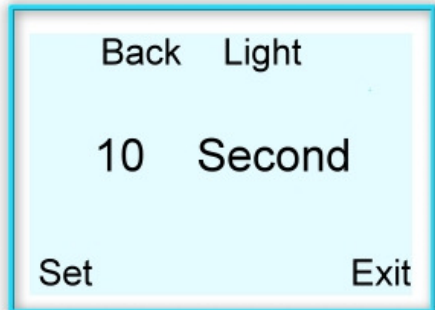
a) Press “Menu” to enter Menu mode



b) Scroll up and down to “Back light” and press “Select”



c) Using “Up and Down” key to adjust time duration. Press “Set” to set or “Exit” to exit.

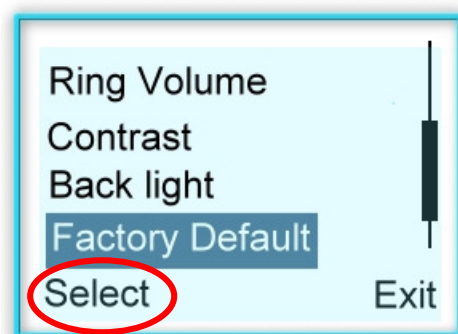
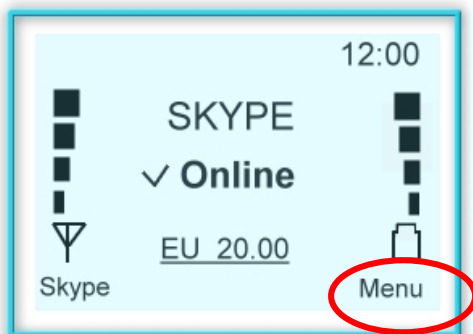


3.1.8 Factory Default setup:

If you wish to return to the factory default settings, please do the following steps:

a) Press “Menu” to enter Menu mode

b) Scroll up and down to “Factory Default” and press “Select”



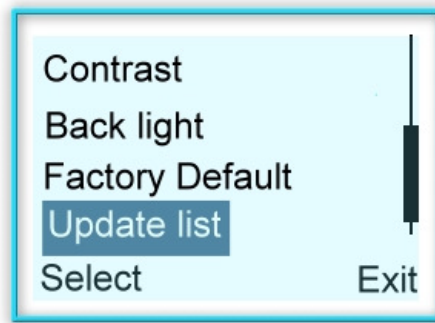
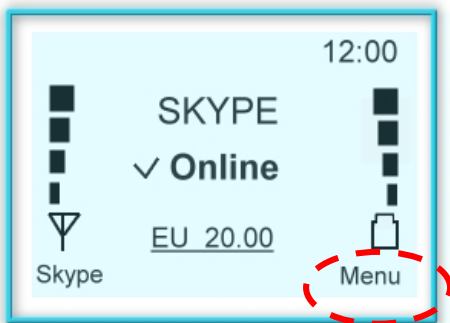
3.1.9 Manually name list update:

(Also refer to Section: 2.1.2~2.1.3)

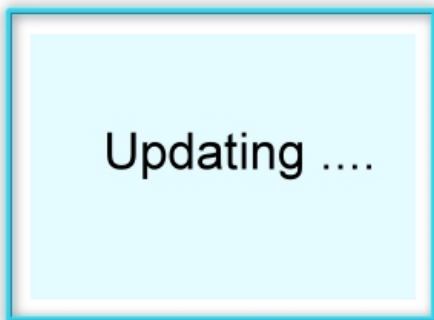
If you find the name list on the handset is different from the name list on the Skype™ software, please do the following steps to synchronize the name lists:

a) Press “Menu” to enter Menu mode

b) Scroll up and down to “Update list” and press “Select”



c) “Updating.....” indicated update on progress.

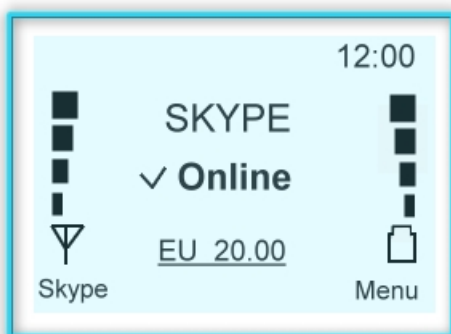


Remark: Please ensure Skype™ program, Driver, dongle and handset are in operative status.

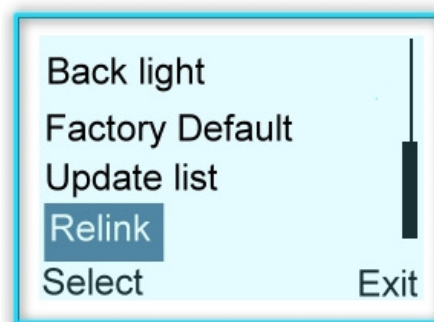
3.1.10 Paring up – USB phone and Dongle

You might need to re-pair-up your USB phone and Dongle if you find connection error between these two devices. Please do the following steps for paring-up:

a) Press “Menu” to enter Menu mode



b) Scroll up and down to “Relink” and press “Select”.



c) A timer indicated update on progress.



Remark: Please ensure Skype™ program, Driver, dongle and handset are in operative status. Do not remove Dongle or Power off handset when pairing-up is in progress.

3.2. Using Skype™ to make calls

For more information about Skype™ program and how to make Skype™ calls though PC, please visit Skype™ official website: www.Skype.com

WARNING:

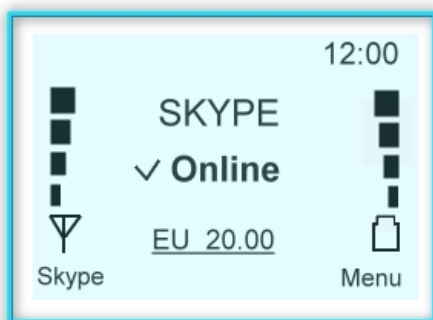
Skype™ software does not support calls to any emergency number nor emergency service (e.g. 211, 911, 999 etc). To perform calls of this type please make sure to use a landline telephone or a cellular/mobile phone.

3.2.1 . Making calls from Name lists in handset:

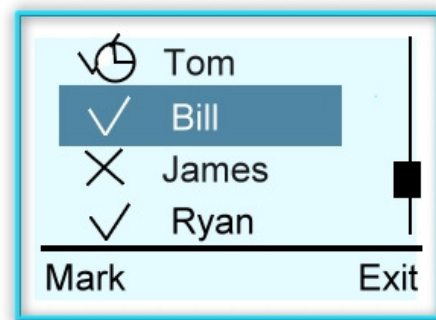
Remark: The handset only display name lists which is stored in your Skype™ account. If the name lists are not the same, please refer to section 3.1.9 for name list synchronization.

Follow the steps to make internet calls from your handset name list:

a) Return to the following page.

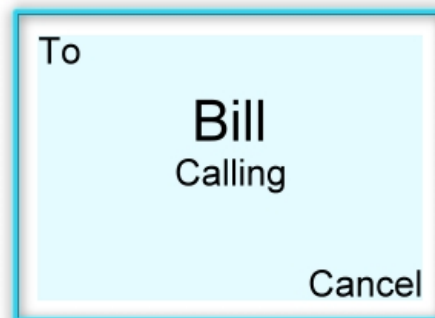
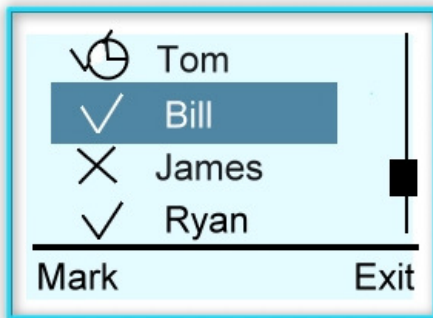


b) Press “Up/Down” key to enter phone book.



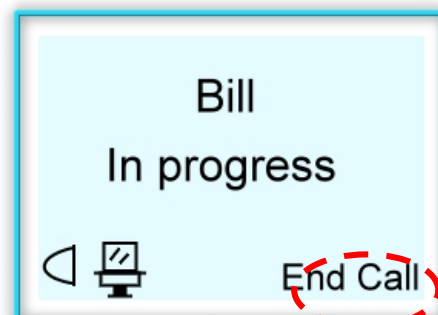
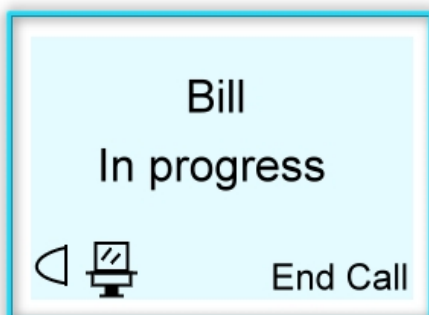
c) Press “Call” or “” to dial out or “Exit” to exit.

d) Waiting for other side to pick up.




e) Calling in progress.

f) Hang up by press “End call”.



Remark:

1. *The Volume may also be adjusted when there is a call in progress. While on the call, press UP / DOWN button to adjust.*
2. *While phone call in progress, the following buttons have designated functions:*

“” Button => Hold / un-Hold

“ * ” Button => Microphone Mute / un-Mute.

3.2.1.1 Contact person status

There are some icons in front of each name in the phone book. Below chart indicates the description of each icon.

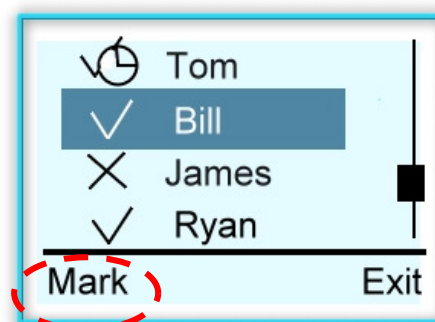
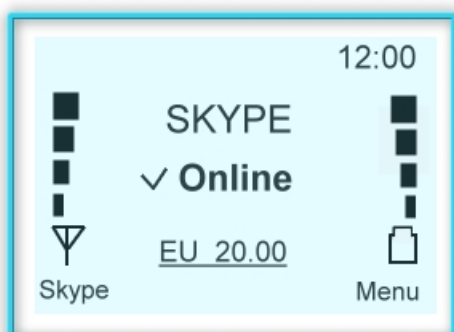
Icon	Description	Icon	Description
✓	Online	⌂	Exit / Not available
✗	Offline	⌂	Do Not Disturb
📶	Away	✓	Hide / Invisible
☎	Pre-set telephone number		

3.2.2 Making Conference calls from name lists in handset:

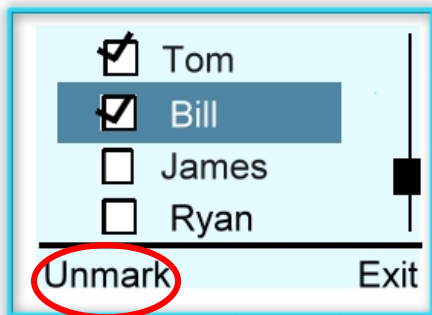
Follow the following steps to host a multi-users conference call:


a) Return to the following page.

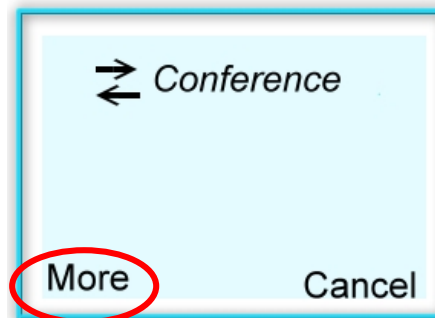
b) Press “Up/Down” key to enter phone book.
Press “Mark” for con-call members.



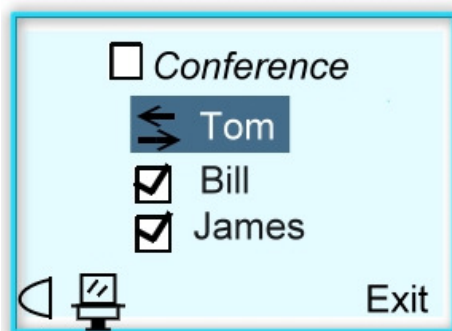
c) Multiple users can be selected by scrolling up/down and “Mark”.




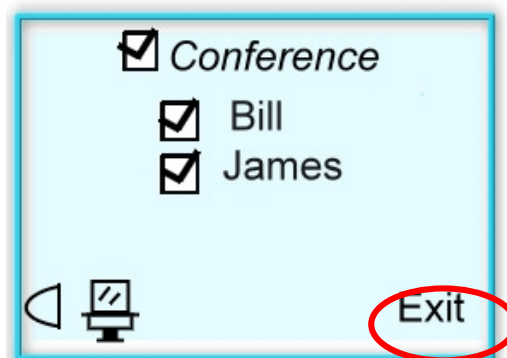
d) Once all con-call members are marked, press “” to call. “More” button will show con-calls’ details.



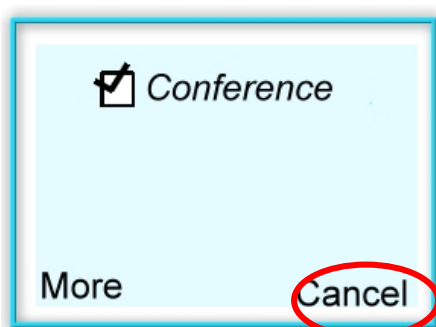
e) Conference call details as shown:



f) Using Up/Down key to highlight the caller you wish to hang up and press “” to terminate the caller. Press “Exit” to the main page.



g) Press “Cancel” to hang up all calls in conference call section.

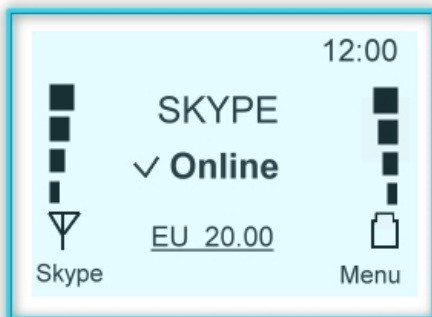


3.2.3 Making Skype™ Out from handset:

Remark: You must have Skype™ Out credit to active this function. For more Skype™ out information, please visit: www.SkypeTM.com for details.

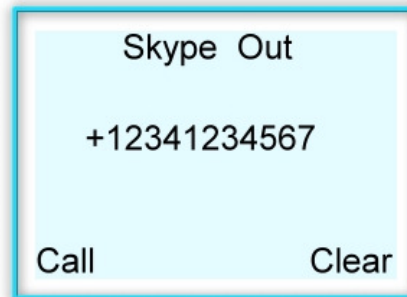
Follow the steps to make Skype Out™ from your handset:

a) Return to the following page.

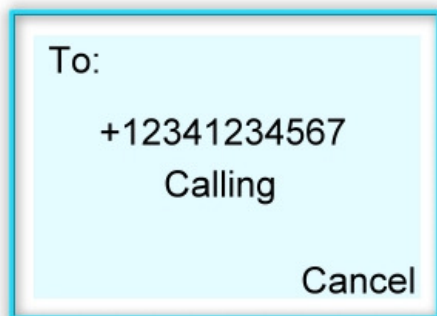


b) Press number you wish to dial.

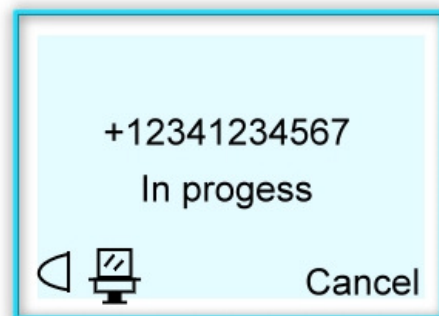
“Call” to dial out, “Clear” for back spacing.



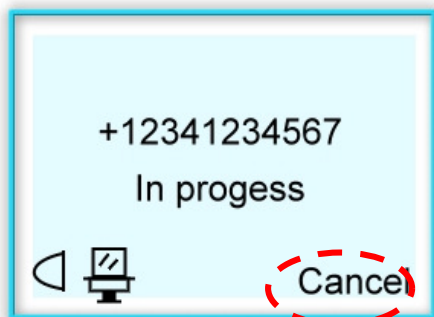
c) Waiting for other side to pick up.



d) Call in progress.



e) Hang up by Press “End call”



WARNING: Skype™ software does not support calls to any emergency number nor emergency service (e.g. 211, 911, 999 etc). To perform calls of this type please make sure to use a landline telephone or a cellular/mobile phone.

3.2.4. Making Speed dial from handset:

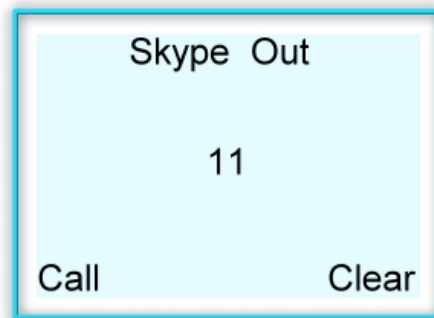
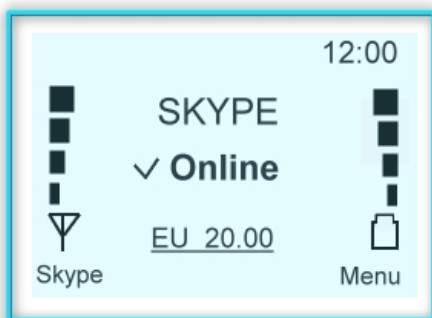
This function is the most convenient and the most useful dialing method offered by the Skype™.



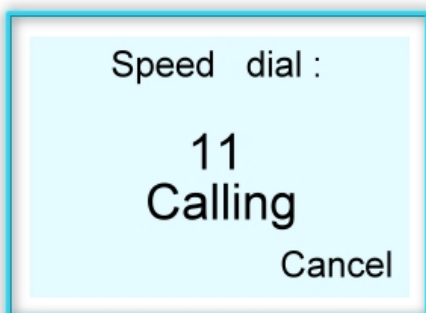
Simply follow the Skype™ speed dial section to preset the desire name list.

a) Return to the following page.

b) Press pre-set speed dial number you wish to call. “Call” to dial out, “Clear” for back spacing.



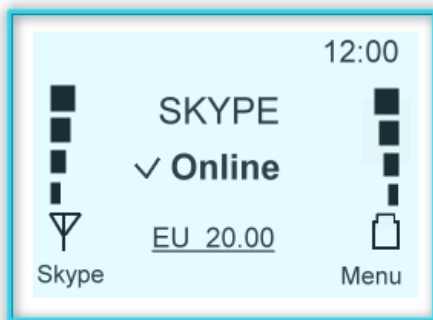
c) Speed dial in progress.



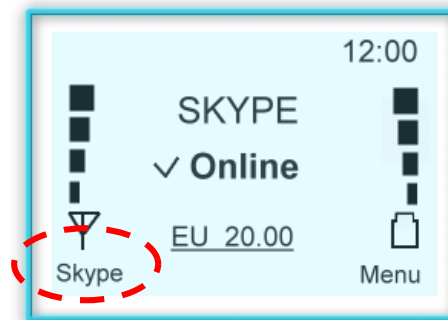
3.3 Using Handset to remote control Skype™ software

The handset is able to remote control the Skype™ program in PC side while Skype™ software is running properly in PC side.

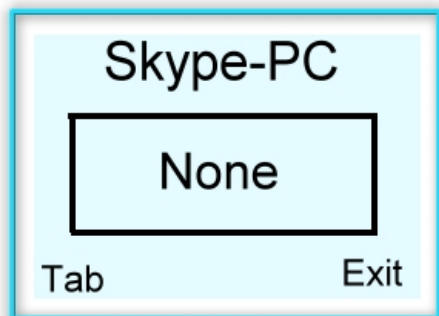
a) Return to the following page



b) Press “Skype™” key to activate remote control function.




c) press the “Skype™” key to select Skype™ Tab in PC.



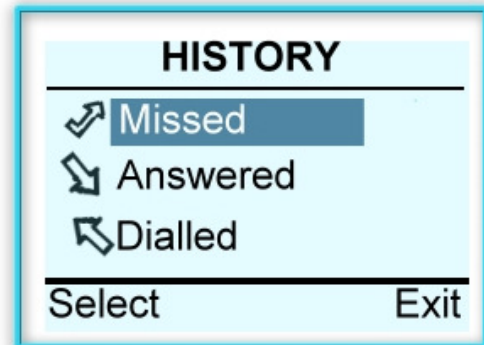
3.4 Calling History

This function allows users to check calling history.

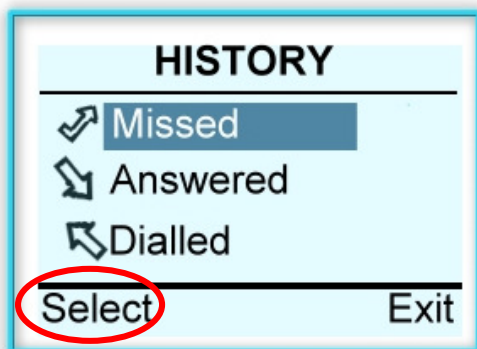
a) Press “” bottom in the following page.



b) Select desire function by pressing “Up/Down”.




c) Press “Select” for details.



4 Using Utility Control

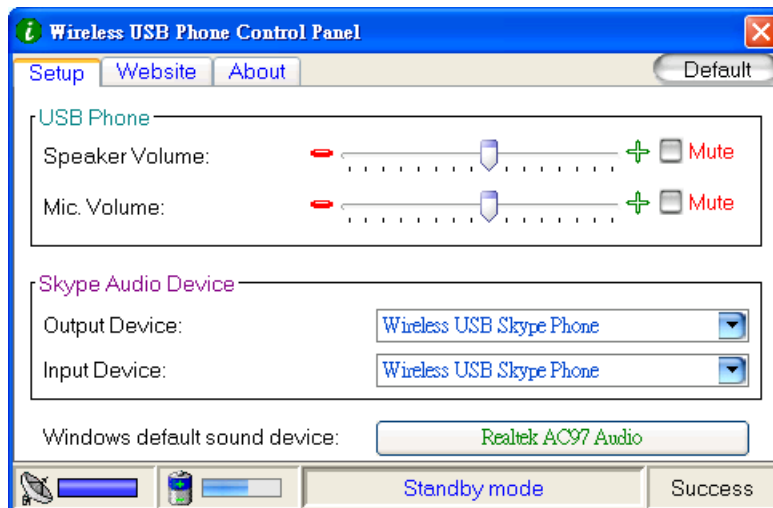
4.1 Utility control panel:

Some basic functions can be adjusted in the PC using the Utility Control Panel.

Double click on the  in the Icon bar in the PC to activate the control panel.

4.1.1 Device Setup

The audio settings can be modified in this section. Use the Mouse to complete the setups:



USB Phone Volume Adjustment

- Using the Mouse to select the sound device.
- Press the Mouse to volume up/down the speaker and Microphone volume.

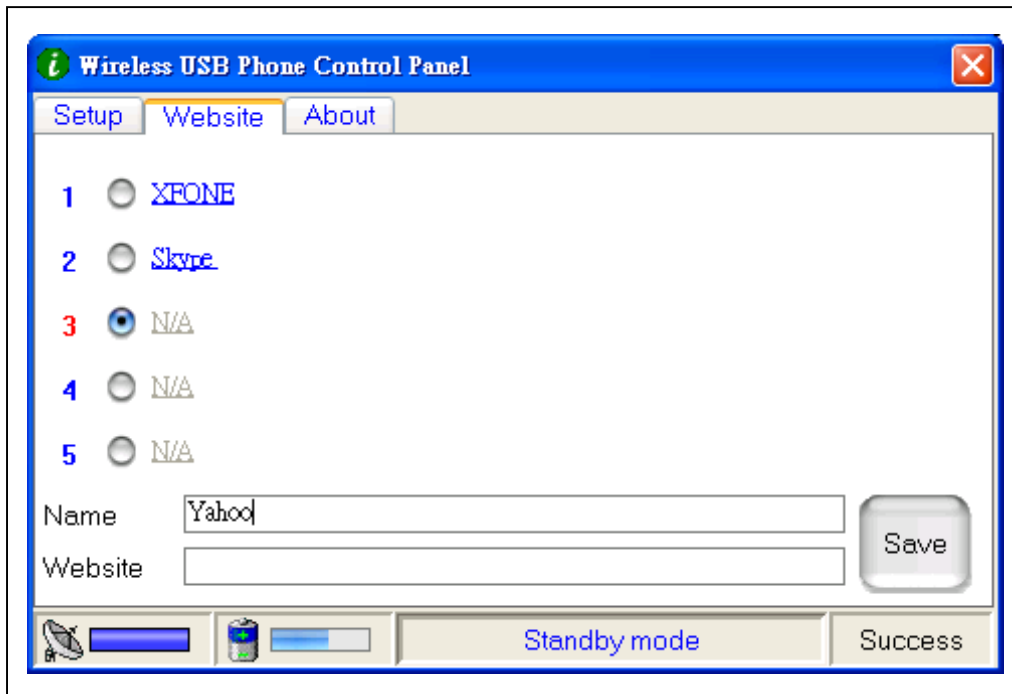
Skype™ Audio Devices: (Refer to section 5)

Please set both output and input device in the Skype™ Audio Device section to "USB Phone" to get the proper USB Phone function.

If you connect your speaker with your computer units, please change the "Windows default sound device" to your system sound card.

4.1.2. Favorite Website :

You may set your favor website address here to have easy and quick access into the designate website. Follow the simple steps of programming your favor websites as below

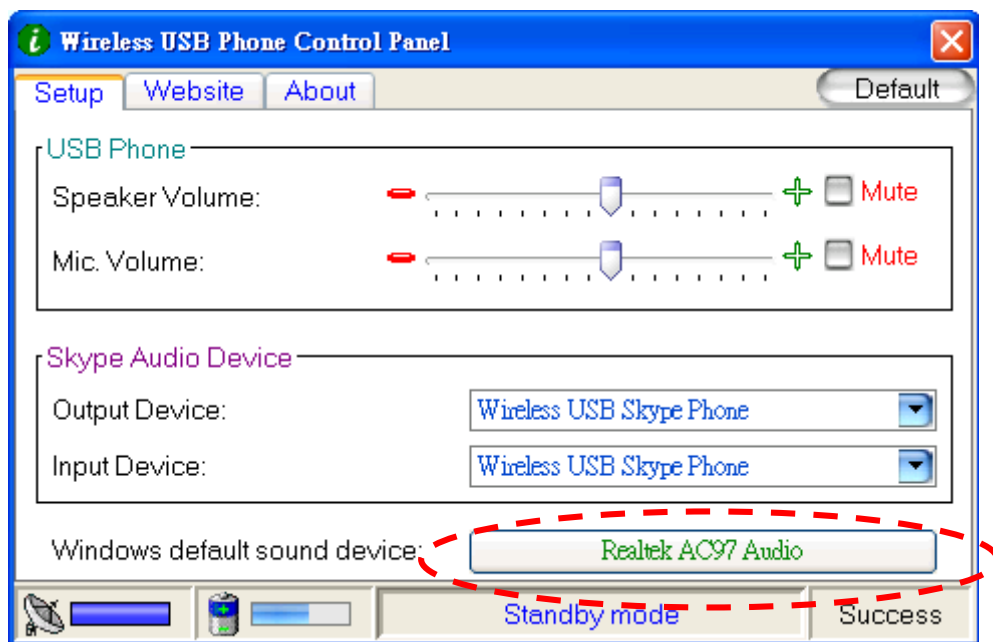


- a) Set your favor website by entering the "Name and "Website" address in the designated column and click "Save".
- b) Access the pre-set web address by pointing at the highlighted word.

5. Assigning PC Audio to PC Speakers

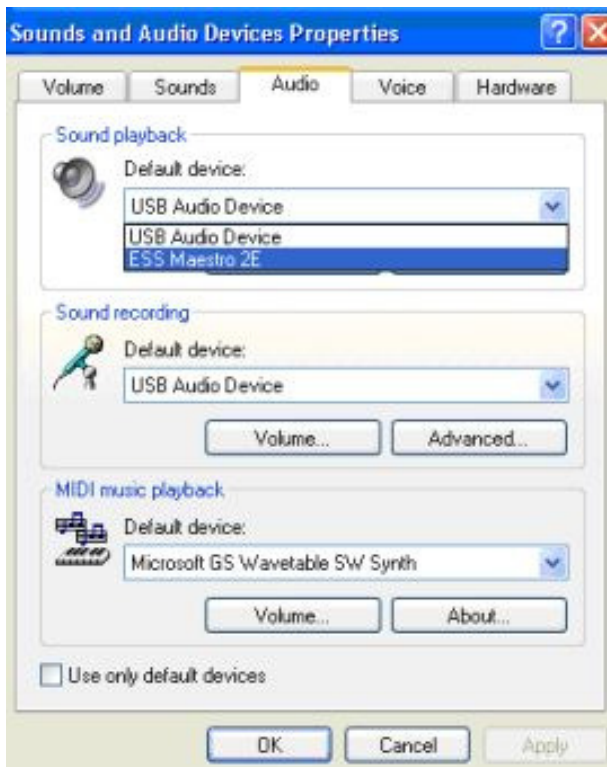
Skype™ handset has a built-in audio chip, which is equivalent to an external sound card device. Therefore, when the handset is connected to a PC, the Windows operation system will recognize it as default audio output device and replace the original audio output device. This facilitates plug-and-play of the USB handset, but it may interfere with the music or video files used to be played through your speakers or stereo headset that are connected to the original sound card in your PC once the USB handset is plugged in. To allow music and sound effect be played through the original speakers, you must reset audio output device of your PC.

1. Refer for to section : 4.1 Utility Control Panel.
2. To adjust the Skype™ Audio Device, select the desire device under the “Input Device” and “Output device”.
3. To check the Windows default sound device, press the button for windows Sounds and Audio Devices Properties” (See below Picture A)



Picture A

4. After the “Sounds and Audio Devices Properties” window is opened, select “Audio” tab, and you will see that the default device for sound playback is “USB Audio Device”.
5. If you wish to have proper sound out from your original speaker, select your system build in sound card. (See below Picture B)



Picture B

6. Package and accessories

You will find the package contains:

- Wireless phone for Skype™ x 1 pc
- USB Dongle x 1 pc
- Driver CD x 1 pc
- Rechargeable Battery x 1 pc
- USB recharge cord x 1 pc
- Charging Cradle x 1 pc (Optional)
- QIG x 1 pc

7. Technical Specification:

A. System Requirements:

- Window Vista / XP / 2000 operation system
- 400MHz processor speed.
- 128MB RAM or above.
- Minimum 15 MB Hard Disk Drive Space.
- Internet connection. (Any broadband connection or 56Kbps dial up modem)
- USB 1.1 or USB 2.0 Port
- Skype™ software.

Remark: For more information about Skype™, please visit: www.Skype.com.

B. Phone/Dongle 2.4GHz RF Information

1. Frequency band: 2413.152 ~2470.176 MHz
2. Channel Number: 34 Channel(s)
3. Operation range: 30 Meter at free space

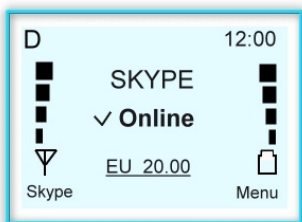
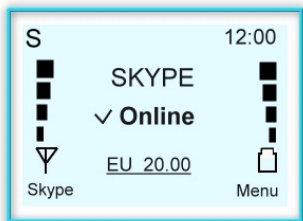
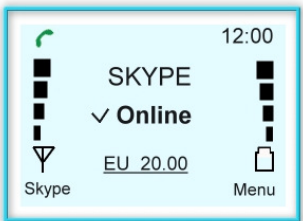


C. Phone Specification:

1. Speaker: 32 ohm, 500mW Max, Frequency response:300Hz ~3400Hz
2. Microphone: Condenser microphone, -42dB +/- 3dB, 20Hz ~20,000Hz
3. Connection type: USB connector for battery charger ; Version: 1.1/ 2.0
4. LCD display:

Size	30 mm x24 mm
Pixel	101 x 79 dots
Menu Support language	Chinese & English (Multi-languages with content translated)
Contact List Support Language	Uni-Code depends on PC
Contrast Level	16

5. Battery Type: 3.7V, 600mAh, Li-Ion Battery
6. Recharging function (to Handset directly): USB cable
7. Talking time: 6~8 hr. (With fully charged battery)
8. Standby time: 300 hr. (PC status: ON, Fully charged battery)
9. Recharging time: 3 hr by USB cord.

8. Technical problems / Q & A

Question	Answer
 <p>The LCD display shows “D” on the left hand corner, what does it mean?</p>	<p>⇒ The “D” indicates there is no Driver install or the driver is not activated in the PC side.</p> <p>⇒ Bad wireless internet connection.</p> <p>Please re-install the Driver using CD-Rom or activate the driver again.</p> <p>Check your internet connection again.</p>
 <p>The LCD display shows “S” on the left hand corner, what does it mean?</p>	<p>⇒ The “S” indicates that the Skype™ program in the PC side has been log-out or not activated.</p> <p>Please re-run the Skype™ program in PC.</p>
 <p>The LCD display shows “” on the left hand corner, what does it mean?</p>	<p>⇒ The “” indicates there are un-answered calls in the phone book.</p> <p>Please refer to Section 3.4 “Calling History”.</p>

Federal Communication Commission Interference Statement

This equipment has been tested and found to comply with the limits for a Class B digital device, pursuant to Part 15 of the FCC Rules. These limits are designed to provide reasonable protection against harmful interference in a residential installation. This equipment generates, uses and can radiate radio frequency energy and, if not installed and used in accordance with the instructions, may cause harmful interference to radio communications. However, there is no guarantee that interference will not occur in a particular installation. If this equipment does cause harmful interference to radio or television reception, which can be determined by turning the equipment off and on, the user is encouraged to try to correct the interference by one of the following measures:

- Reorient or relocate the receiving antenna.
- Increase the separation between the equipment and receiver.
- Connect the equipment into an outlet on a circuit different from that to which the receiver is connected.
- Consult the dealer or an experienced radio/TV technician for help.

FCC Caution: Any changes or modifications not expressly approved by the party responsible for compliance could void the user's authority to operate this equipment.

This device complies with Part 15 of the FCC Rules. Operation is subject to the following two conditions: (1) This device may not cause harmful interference, and (2) this device must accept any interference received, including interference that may cause undesired operation.

This transmitter must not be co-located or operating in conjunction with any other antenna or transmitter.

Product name: Wired USB Phone for Skype™

Software version: V. 3.0.0.1

www.xfone.biz

©2007 FirstCom Technology Co., Ltd.