

YURAKU

**GI07
Instruction Manual**



<http://www.Yuraku.com.sg>

Connection Diagram



Declaration of Conformity



EC-Declaration of conformity to the essential requirements to the applicable EMC Directive 2004/108/EC

We, Yuraku GmbH of Germany declare under our sole responsibility as authorized representative that the following product

Brand Name:
Model Name:
Model Number:

Is fully conformity with the essential requirement of the European Directive 2004/108/EC. This declaration is based on the full compliance of the product with the following European standards:

EN 55013 : 2001 + A1 : 2003
EN 55022: 2006
EN 55020: 2002 + A1: 2003 + A2: 2005
EN 55024: 1998 + A1: 2001 + A2: 2003

Lorsch, 04.23.07

A handwritten signature in blue ink, appearing to read 'D. Pfeiffer'.

Yuraku GmbH Industriestraße 2, 64653 Lorsch, Germany

Information

- Do not violate or infringe the copyright law and other international copyright laws while using this player for recording.
- The copyright law forbids unauthorized reproduction of copyrighted music for any other purpose other than self-entertainment without the author's permission.
- For the purpose of self-entertainment, it is strictly prohibited to compile and disseminate copyrighted music to a third party without the author's permission.
- If copyrighted music is intentionally disseminated by means of information network without the author's permission, the infringer will violate "the right of communications to the public" and "the right of distribution" and shall be subject to the criminal charges.
- The Company, and the manufacturers, distributors and dealers of this player are not liable for any of the above infringement acts.
- The Company shall not be liable for any loss or damage (whether anticipated or unanticipated loses) of customers or other third parties due to the usage of the player.
- Before introducing or using the player, please back-up all essential information stored in PCs. The Company shall not be liable for any loss or damage due to the usage of the player.

Safety Rules

- Please follow the rules depicted in this manual closely to ensure your safety. Before using the player, we would strongly encourage you to read through this user manual
- Be more wary of any edges, uneven surfaces, metal parts, accessories and its packaging so as to prevent any possible injury or damage.
- Keep this player out of reach of children. Take note that this player is not edible and should not be placed in your mouth.
- Do not modify, repair or dismantle the player. Doing so may result in fires, electric shocks, complete breakdown of the player, etc. All of which, are not covered under warranty.
- Do not use any diluents or volatile liquid to clean the player. Keep in mind that the surface of the player should only be wiped with a dry cloth.
- Do not use this player in locations whereby there are high-temperatures or high humidity levels (For instance, bathrooms); ideally, the player should be used in a location free of dust and exposure to direct sunlight.
- Do not insert foreign objects, such as pins, into this player.
- Do not touch this player when your hands are wet as this may result in electric shocks.
- Be extremely cautious while using headphone/earphones as they may strangle the user when entangled.
- Turn down the volume before/while using this player as sudden

loud sounds may damage your ear drums.

- Refrain from dropping the player as well as any collision with other objects.
- When plugging in/out the headphone/earphones or wires please hold the player and jacks firmly to prevent the wires from breaking and the player from dropping.
- If using the player while walking, do pay attention to the traffic situations and road conditions.
- Do not use this player when in hazardous locations.
- Should any abnormal situations or problems occur while using the player, discontinue use of player immediately.

FCC Statement

This device complies with Part 15 of the FCC Rules.

Operation is subject to the following two conditions: (1) this device may not cause harmful interference, and (2) this device must accept any interference received, including interference that may cause undesired operation.

Changes or modifications not expressly approved by the party responsible for compliance could void the user's authority to operate the equipment.

-
- This device and its antenna(s) must not be co-located or operating in conjunction with any other antenna or transmitter

Connecting to a PC

Operation Procedure

- 1) Ensure that the player is switched off before connecting the player to a PC via the provided USB cable to upgrade firmware or copy music into the player.
- 2) Use the USB cable provided to connect to computer and it will be recognized as a USB Mass Storage Class and it can be found in "My Computer."
- 3) The files stored on the player can be managed through Windows File Explorer or "My Computer" to copy chosen music files or data to the player. You could delete the files in the player through your operating system as well.
- 4) Once all procedures have been completed, please follow the steps below to remove the player to **avoid causing damage** to your files.

Removing hardware

- 1.) Double-click using the left button of your mouse on the icon that says "safely remove hardware", as can be seen from the image below. This icon is located at the lower right hand corner of your computer screen.

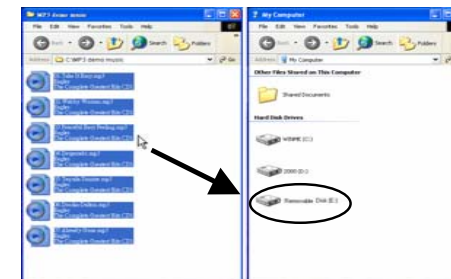


- 2.) When the icon appears, click the “Stop” button to remove the hardware safely. The player may then be detached from the USB Cable.

Copying music files to the player

1. Please refer to the previous section -“Connecting to a PC” to connect a PC to the player using a USB cable or a USB adapter.
2. If the connection is successful, a removable drive icon (F:\) will appear in “My Computer.”

3. First, locate your favorite MP3 or WMA music files in “My Computer.” Secondly, select specific music files and click on those files with the right button of the mouse and select “Copy.” Next, locate the Removable Drive (F:\) in “My Computer”. After doing so, right click on the mouse to “Paste” the selected files to F:\. . Another way is to hold the left button of the mouse on the files you wish to copy, and drag the files to the Removable Drive. To finish the copying process, release the button of your mouse.



4. After the file copy process has been completed, please refer to the steps as mentioned in previous page so as to remove the player safely.

Accessory List:

MP3 Player
Stereo Earphone
USB Cable
Driver CD
User's manual

Product accessories may vary according to different shipment packages and retailers. You may contact your retailer for further details.

The accessories list is subjected to change without prior notice by the Company. Actual accessories provided may vary from those stated in this document.

Table of Contents

1. **Product Overview**
 - 1.1 Features
 - 1.2 Hardware Description
 - 1.3 External View of Product and Features
2. **Basic Operation**
 - 2.1 Overview of Button Events vs. Corresponding Actions
 - 2.2 LED Indicator
 - 2.3 Operating in Music Mode
 - 2.4 Operating as a Bluetooth Headset
 - 2.5 Operating as a USB Drive
 - 2.6 Power Charge
3. **Trouble Shooting**
4. **Product Specification**

1. Product Overview

1.1 Features

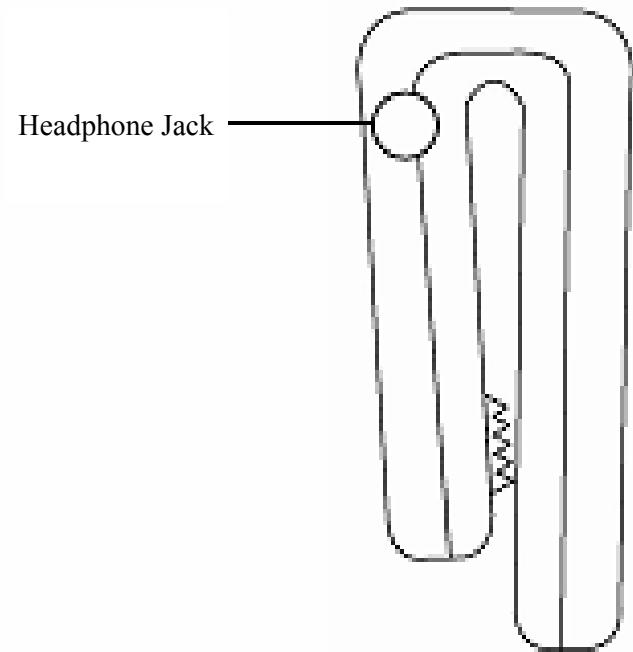
- Supports MP3 and WMA music file.
- LED Indicator
- Plug-and-Play USB Flash Disk function.
- Normal or Random mode for music play.
- Supports Bluetooth Headset (HSP) and Hands-free (HFP) profile.
- USB2.0 Full speed

1.2 Hardware description

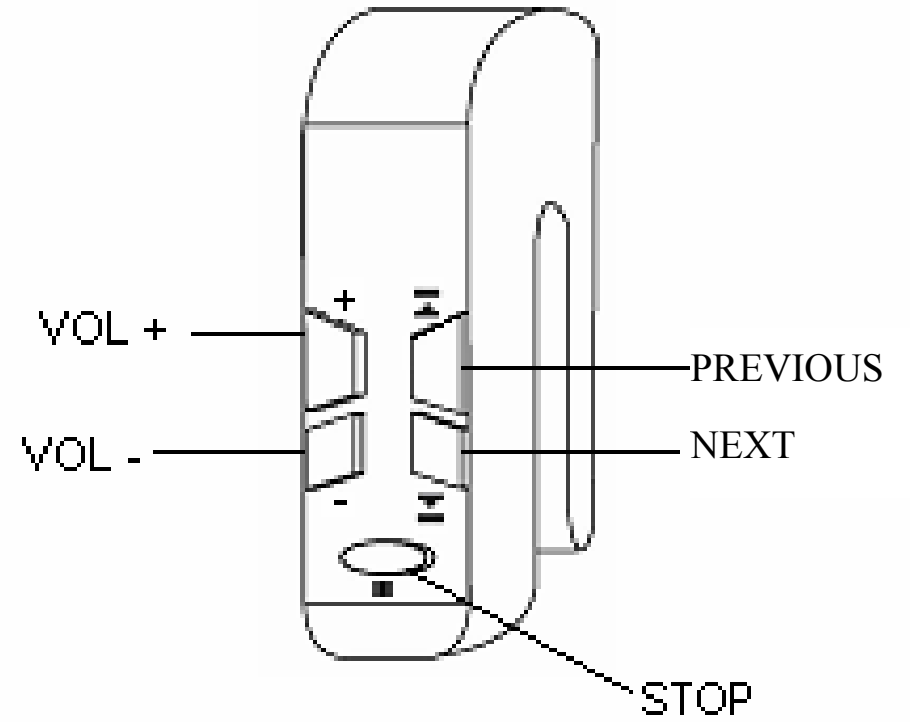
This player comes with:-

- 6 control buttons
- ✓ One on the line of the stereo earphones → **PLAY** button
- ✓ 5 buttons on the player → **UP/DOWN**, **NEXT/PREV** and **STOP**
- One **RESET** button hidden under behind the 3.5mm headphone jack.
- One 3.5mm headphone jack hidden under the rubber stopper.
- One **Mic** on the line of the stereo earphones
- **LED indicators** (red and blue 2 colours) on top of the front surface of the player.

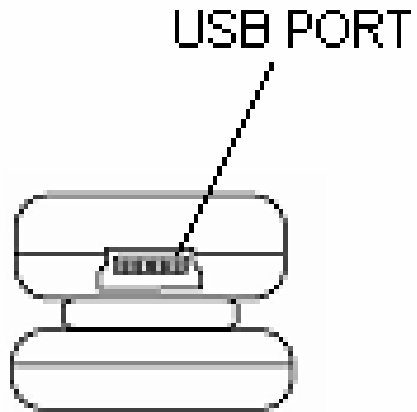
1.3 External View of Product and Features



17



18



2. Basic Function

Switching the player On/Off

Switching on the player

- Press and release **PLAY** to turn on the player
- The player takes about 3 sec to start up, depending on the number of songs stored in it
- Once it has started, a welcome message, "Enjoy your Bluetooth Headset with Music!", will be played

Shutting down the player

- Press and hold the **STOP** button until you hear the shutdown message "See you again..."

Resetting the Player

For resetting the player, please use a stick or something that is able to press the **RESET** button which is at the end of the headphone jack. Press the **RESET** button **ONCE**.

NOTE: Only use this button when the player has totally hanged and is not able to function.

2.1 Overview of Button Events vs. Corresponding Actions

Buttons	Events	Actions
PLAY	PR	<ol style="list-style-type: none"> 1. Power On when it is at standby 2. Play/Pause while playing 3. Pick up phone when there's incoming call.
PLAY	PH<5sec	Give Battery level indication
PLAY	PH>5sec	Enter Pairing Mode
STOP	PR	<ol style="list-style-type: none"> 1. Stop music while playing 2. Reject an incoming call or hang up the call.

STOP	PH<5sec	Change playmode (Normal ↔ Random)
STOP	PH>5sec	Shutdown
PREV	PR	Previous song
PREV	PH	Rewind
NEXT	PR	Next song
NEXT	PH	Fast Forward
UP	PR or PH	Volume Up
DOWN	PR or PH	Volume Down

NOTE: PR = Press and Release
 PH = Press and Hold

2.2 LED Indicator

State	LED status
Playing with battery >30%	Blue LED blinks every 10 sec
Playing with battery <30%	Red LED blinks every 10 sec
During Pairing	Blue and Red alternating moderately
During USB read and write	Blue and Red alternating moderately
During USB idle with battery >30%	Blue LED blinks moderately

During USB idle with battery <30%	Red LED blinks moderately
During charging with battery >30%	Blue LED blinks moderately
During charging with battery <30%	Red LED blinks moderately
After fully charged	Blue LED blinks very quickly

2.3 Operating in Music Mode

Once the player is turned on, press the **NEXT** or **PREV** button to search for the desired track.

Press the **PLAY** button to pause the music, press again to resume playing.

Normal playing operation

- **Press and release** the **NEXT** button to forward to the next song or **press and hold** the **NEXT** button to fast forward the current song.
- **Press and release** the **PREV** button to backtrack the previous the song or **press and hold** the **PREV** button to fast rewind the current song.
- Press “**vol +**” or “**vol -**” to increase or decrease the volume of the music

Change play mode

- Press and hold the **STOP** button for about 1 sec then release
- You will hear the selected playmode, which is either “Normal” or “Random

NOTE: Please refer to the “Button events vs Corresponding Actions” table.

2.4 Operating as a Bluetooth Headset

Pairing with your Handphone

- ✓ Press and hold the **PLAY** button until you hear the message “Enter pairing...”
- ✓ Use your handphone to look for this Device (Snafu-Clip)
- ✓ Once it is found, select this device and key in the password: “0000”.
- ✓ Once has been paired successfully, the message “Pair Success!” will be played

- ✓ To disconnect, press and hold the **STOP** button to shutdown the player

NOTE: If pairing has failed, a message “Pair Failed!” will be played within the pairing period of 60seconds

Answer incoming call

- ✓ Press and release the **PLAY** button

Reject incoming call

- ✓ Press and release the **STOP** button

Stop a call session

- ✓ Press and release the **STOP** button

2.5 Operating as a USB Drive

- ✓ Shutdown the player first.
- ✓ Use the USB cable provided to connect to your computer
- ✓ The computer will recognize it as a USB Mass Storage Class and it can be found in “My Computer”

2.6 Power Charge

- Use the USB charger provided to charge the player.
- Charge until the Blue LED blinks very quickly

NOTE: Turn off the power when it is not in use.

3. Trouble Shooting

3.1 There is no sound when playing.

Possible fault and remedy: Check to find if the volume is adjusted too low. If it is too low, turn it up .Make sure that the earphones are properly connected, or they are working properly.

3.2 Sometimes abnormality occurs on the PC when disconnecting the player.

Possible fault and remedy: This is mainly caused by unplugging during data transmission. It is advised to never disconnect the player while data and files are being transmitted between the player and your PC.

Why music files cannot be downloaded when linked to a PC?

Possible fault and remedy:

- Management driver not installed. Install again.
- Installed driver damaged. Install again.
- PC main board does not support USB connection. Upgrade the main board.

4. Product Specification

Chipset	STMP3507 BGA for FULL SPEED STMP3550 BGA for HIGHSPEED
Bluetooth	CSR BC03 V1.2
Music Format	mp3,wav, wma
Capacity	128MB/ 256MB/ 512MB/ 1GB/ 2GB
USB type	USB2.0 interface
Compress rate	MP3: 8kbps~320kbps, WMA: 5Kbps~192kbps

GI 07 User Manual v02

SNR	$\geq 90\text{dB}$
Output Frequency	(L) 10mW+ (R) 10mW (320hm)
Battery	Lithium Rechargeable Battery 200mAh