

AUDIO setting change

In SETUP Menu, if selecting AUDIO icon, sub items related to audio are displayed like picture..

• SPDIF

⇒ **Down mix** : If selecting this option, all kind of digital audio(PCM, MP3, AC3, DTS) are decoded into analog signal. So, you can hear sound without any separate DTS Decoder(or Receiver).

⇒ **Pass through** : If selecting this option, digital signal is outputted directly without decoding process. So, you need a separate Receiver or Decoder to hear sound in case of using digital audio connectors(Optical, Coaxial)

• Audio Channels

⇒ **2 ch** : If selecting this option, it outputs analog audio signal with 2CH. If you use 2CH speaker, please select this option.

⇒ **5.1 ch** : If selecting this option, it outputs analog audio signal with 5.1CH. Without any separate Decoder or Receiver, you can connect with 5.1CH speaker directly

• Sound Effects

⇒ **On** : When power off and on this device, sound effect comes out.

⇒ **Off** : No sound effect in power on/off..

• Music Play Mode

⇒ **Single Play** : It plays only selected music file.

⇒ **Folder** : It plays all music files in same folder

⇒ **Shuffle**: It plays all music file randomly in same folder.



ETC(Other) settings

In SETUP Menu, if selecting ETC icon, sub items are listed up like below picture.



- **Slideshow Interval** : To control time delay for displaying next picture file during slideshow. ⇒ 3sec, 5sec, 10sec ~ 60sec (total 9 levels)
- **OSD Lang.** : To change OSD languages.
- **Sub. Color** : To change subtitle color when playing back a moving picture.
⇒ total nine(9) kinds available.
- **Sub. Size** : To change size of subtitle when playing back a moving picture.
⇒ total two(2) kinds(Large/Small) available.
- **User defined background** : To change the background of main menu with other picture file that you want. ⇒ You choose a picture file in the basic HDD or in folder through network.
- **Use default background** : To use original background by canceling the user defined background.
- **Factory reset** : To clear all values set by user and to initialize this device with values set at factory.
- **Firmware Update**: To select firmware bin file and to update with new firmware.

NETWORK setting

The sub option related to network will be displayed by selection of NETWORK icon.



- **Network Connection** : Select either “Wired Net.” (for the Ethernet connection) or “Wireless Net.” depending on the type of network connection you want to set up.
- **Connection Status** : It shows current network connection status.
- **Address Setup:**
 - ⇒ DHCP(Auto IP) : IP address will be assigned automatically with using a router.
 - ⇒ Static IP : IP address should be assigned manually by user with Ethernet networking using a direct connection to the computer. Input the IP address, Netmask and Default gateway.



- **MAC (wired)** : It shows MAC address of wired LAN.

WIRELESS(Auto setting)

This section shows how to make wireless network setup automatically to communicate with devices under network environment. You don't need to change any setting value manually.

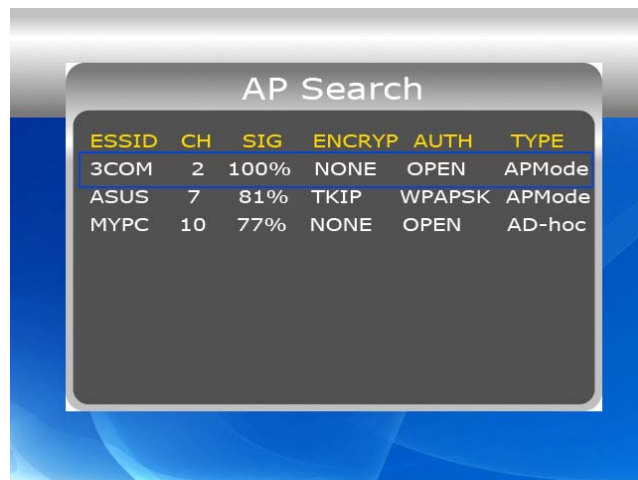
AP SEARCH

Click "AP SEARCH" to look for AP available.



List of AP available

You can select the AP that you want to use and press "OK" button.



TIP

In case that you set ESSID as 'hidden' or you set 'Password' for your AP.

In case that you set ESSID as 'hidden' or you set 'password' with your AP, you need to enter ESSID name or Password by yourself. For entering ESSID name or Password, this device will show you the specific window.

Check “ESSSID”


You can make sure whether the setting value(ESSID, Channel, etc) is right or not. The setting values should be match with your wireless router(or AP) or PC.

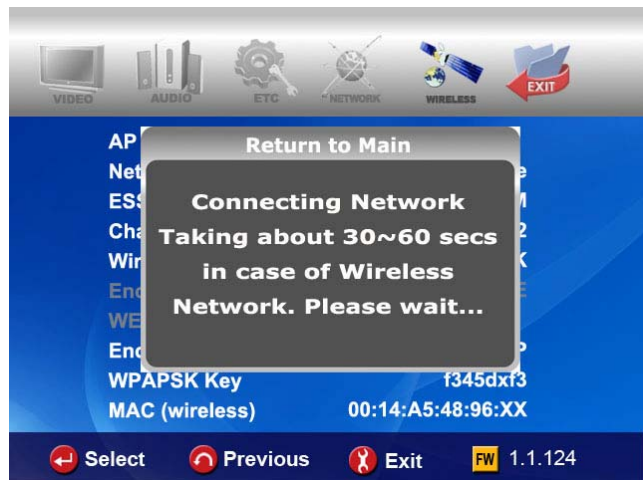
Then, you may press “RETURN” button to store this setting and exit.



Getting IP address


This device will try to get new IP address from your router. It takes about 30 ~ 60 seconds.

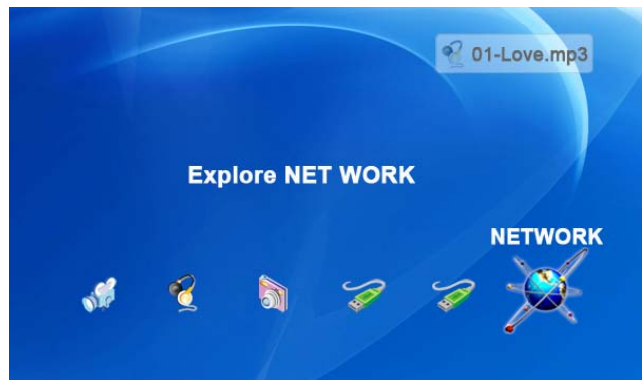
 TIP	With Ad-hoc mode
<p>If you are using Ad-hoc mode, you have to enter IP address manually on “NETWORKR” section.</p>	



Check NETWORK icon activation

NETWORK icon will be activated if the network is connected successfully.

 TIP	Network icon activation
<p>According to network security setting, network status, etc, sometimes it will take 5 ~ 10 seconds for the network icon to be activated. So, you need to wait for some time until the network icon is activated.</p>	




WIRELESS (Manual setting)

This section shows how to make wireless network setup manually to communicate with devices under network environment.

- Before setting this section, check that Connection should be set Wireless net. on NETWORK section.
- If you are running wireless network, all device on your network need to share the same ESSID, CHANNEL, Wireless security and Encryption key in order for them to communicate each other. If you do not know what method of authentication is enabled in your wireless router/AP, please refer to its manual on how to see or set it up.

ESSID

The ESSID of this device should be exactly same as that of the wireless router or the AP(access point) that you use under network environment.

 TIP	WORDING.
<p>The “SSID” is also referred to as the “ESSID” or “Extended Service Set ID”</p>	



CHANNEL

The 802.11g and b specifications supports up to 14 overlapping channels for radio communication. You can select from AUTO to CH13. The selected channel of this device should be as that of the wireless router or the AP(access point) that you use under network environment.



Wireless Security

(Authentication Method)


You can set different authentication methods which determine different encryption schemes. There are 6 authentication methods (WEP Auto, WEP SHARED, WEP OPEN, WPAPSK, WPANONE, WPA2PSK).



Encryption algorithm

(WEP or WPA)

The encryption algorithm determines the authentication method you select.

 TIP	Relation.
Authentication Method	Encryption Algorithm
WEP Auto	NONE
WEP SHARED	WEP
WEP OPEN	
WPAPSK	TKIP
WPA NONE	AES
WPA2PSK	



Encryption (WEP)

Encryption (WEP) option should be applied in case that “WEP” encryption algorithm is used.

The encryption setting of this device should be exactly same as that of the wireless router or the AP(access point) you use under network environment.



Encryption(WPA ,Pre-Shared Key)

Encryption (WPA) option should be applied in case that “TKIP” or “AES” encryption algorithm is used.

The encryption key of this device should be exactly same as that of the wireless router or AP(access point) that you use under network environment.



MAC (wireless)

It shows MAC address of wireless LAN



TIP

Review of wording related to Wireless, Security.

Each manufacturer may use different wording when naming each function. Make your reference for below wordings.

- **ESSID** : referred to as **SSID** or **Extended Service Set ID**
- **ASCII** when **WEP** key or **WPA** key input : referred to as **Characters**
- **HEX** when **WEP** key or **WPA** key input : referred to as **Hexadecimal**
- **Wireless security** : referred to as **Authentication method** or **Type**.
- **Encryption** : referred to as **Encryption Algorithm** or **Encryption Type**
- **NONE** : referred to as **NULL**
- **WPAPSK** : referred to as **WPA P-Key**, **WPA Pre-Shared Key** or **Network Key**
- **Key** : referred to as **Key Value**

WIRELESS (AD-HOC Setup)

There are several ways to set AD-HOC mode, but the following way is the easiest way to set AD-HOC setup. Please see the following procedure.

NETWORK setting of this device

Go to NETWORK in SETUP menu and enter the following lists.

- A → Wireless Net.
- B → Static IP
- C → 200.200.0.2 (IP Address)
- D → 255.255.255.0(Subnet Mask)
- E → 200.200.0.1



WIRELESS setting of this device

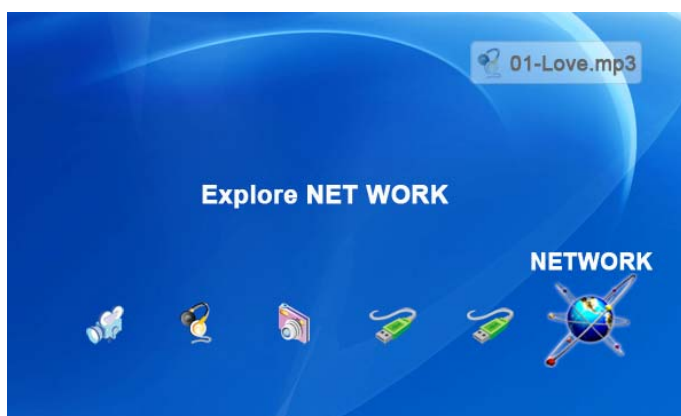
Go to WIRELESS in SETUP menu and enter the following lists.

- A → AD HOC.
- B → Enter ESSID(ex. abc)
- C → Select Channel (ex. Ch11)
- D → Select "WEP AUTO"
- E → Select "NONE"



Save setting and Return to main

To save setting and return to main, press "SETUP" button on remote controller.



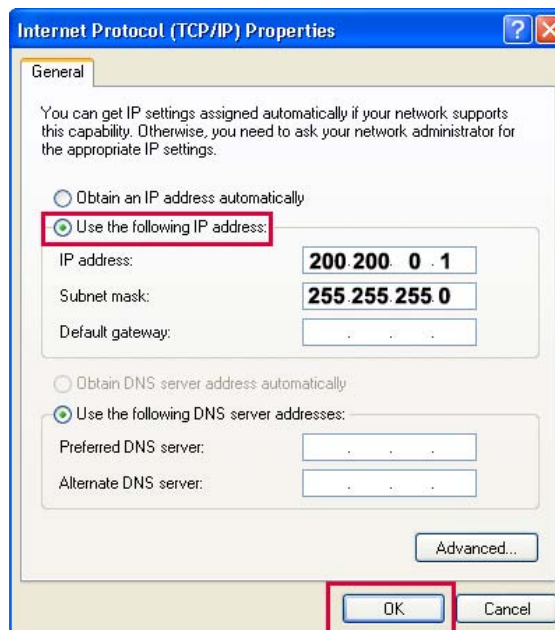
Set IP and Subnet mask with a PC

On the PC, select Network connection in the control panel. Open Properties for the network connection that is connected to this device. Select Properties for the Internet protocol (TCP/IP). Select "Use the following address" Enter the IP address below.

IP address : 200.200.0.1

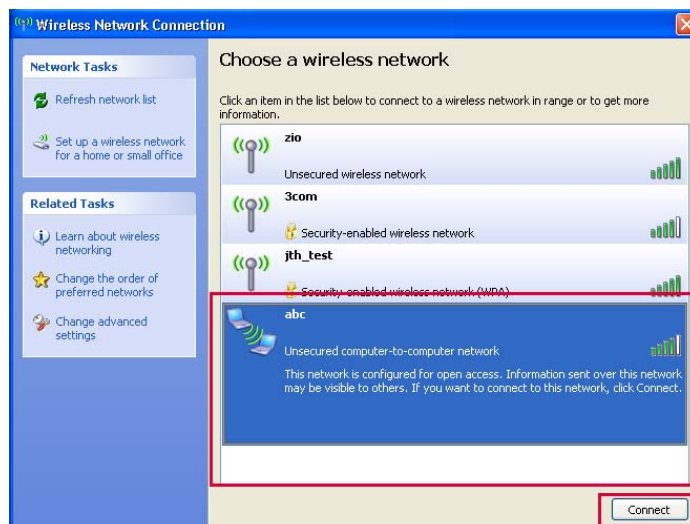
Subnet mask : 255.255.255.0

Click "OK"



Zero Configuration utility-a

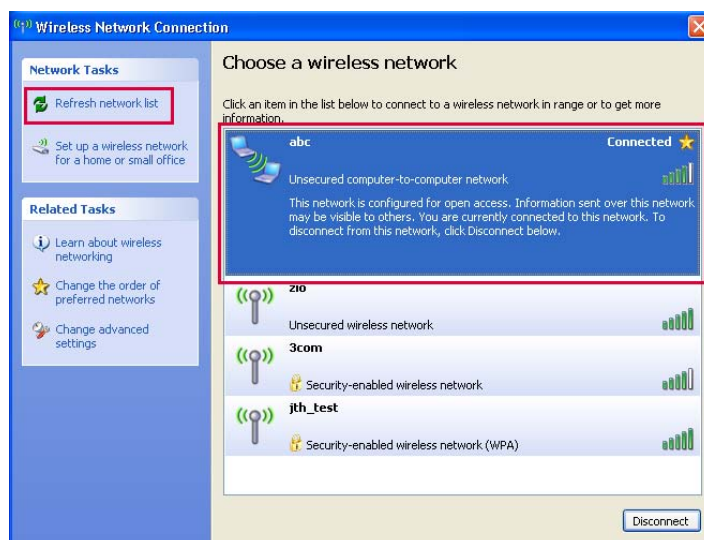
Open wireless zero configuration utility and choose a wireless network with same ESSID (ex.abc) that you entered with this device. Click "Connect".



Zero Configuration utility-b

After connecting successfully, you can browse shared folder with this device.

TIP	Refresh network list.
<p>If you can not find the ESSID that you entered with this device, please try to click "Refresh network list" on wireless Network Connection.</p>	



LAN Sharing setting(PC)

With shared folder, you can easily get multimedia file like movie, music and photo as if these files are in HDD of this device. To use shared folder, you must proceed the following steps.(based on window XP)

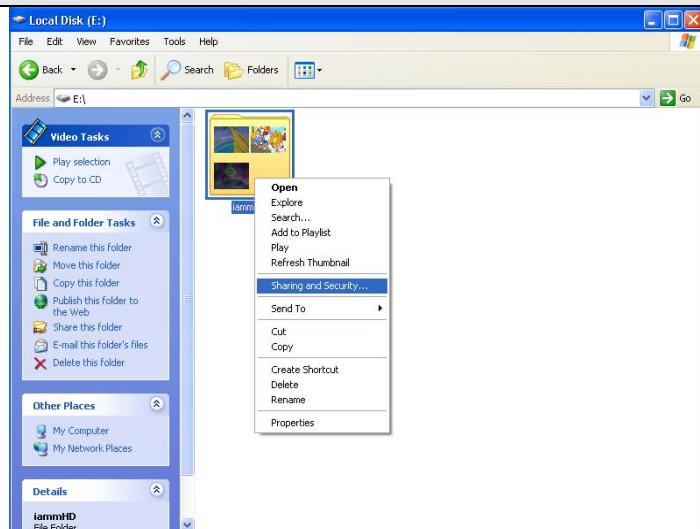


TIP

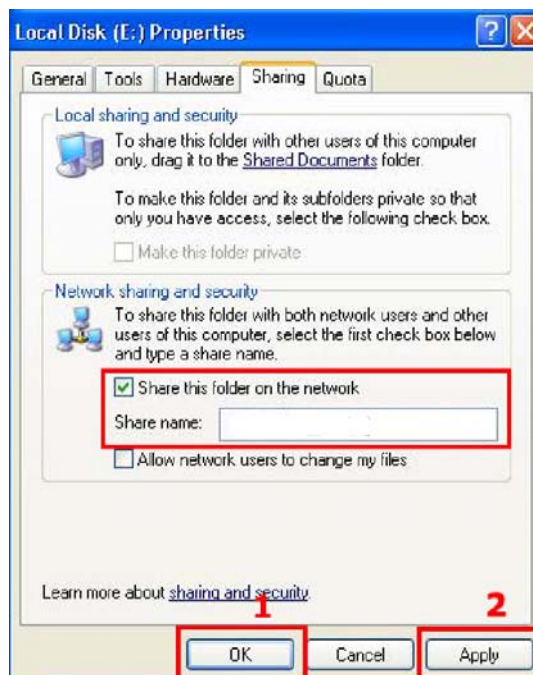
NOTE.

If firewalls are set in your PC, it may cause problem for this device to communicate with your PC. So, you need to disable the firewall program in your PC.

1. Click right button of mouse on the folder that you want to share and select **“Sharing and Security...”** .



2. Check on **“ Share this folder on the network”**. Fill in the box of “Share name”. And then, click **“OK”** and **“Apply”** button for confirmation.



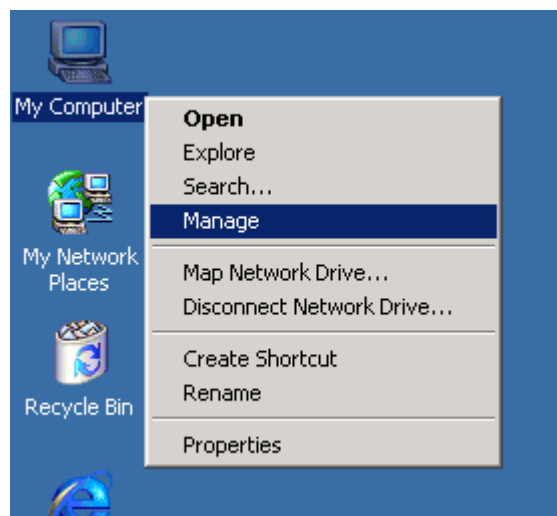
3. Then, each shared name will be listed up on screen if this device is connected.



Network configuration under window 2000

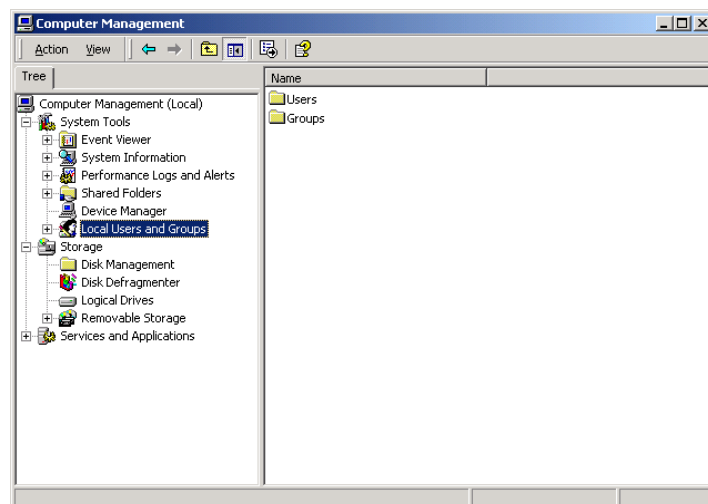
STEP 1

Click the right button on “My Computer” icon and choose “manage”



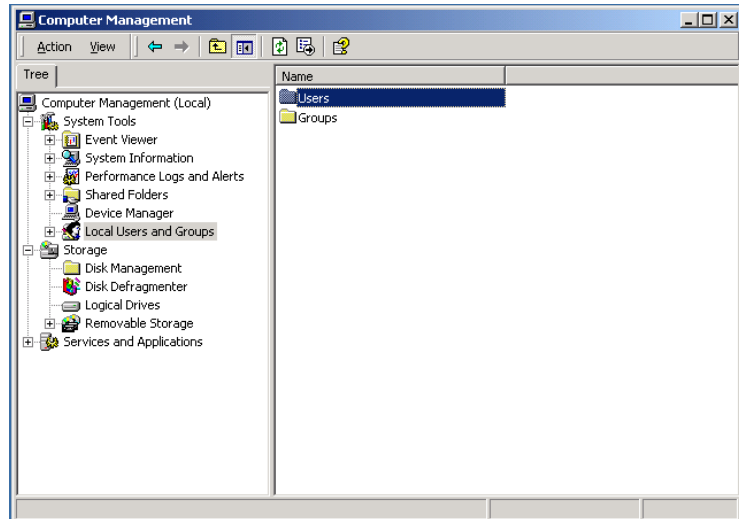
STEP 2

Go to “ Local Users and Groups”



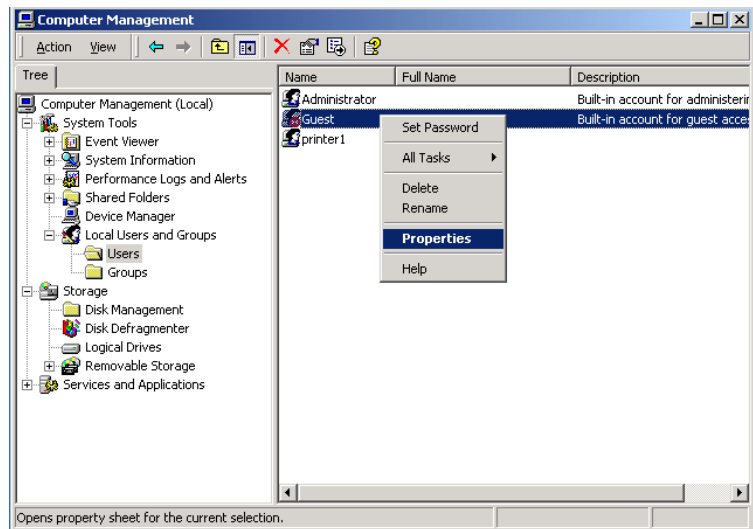
STEP 3

Click the “Users” folder



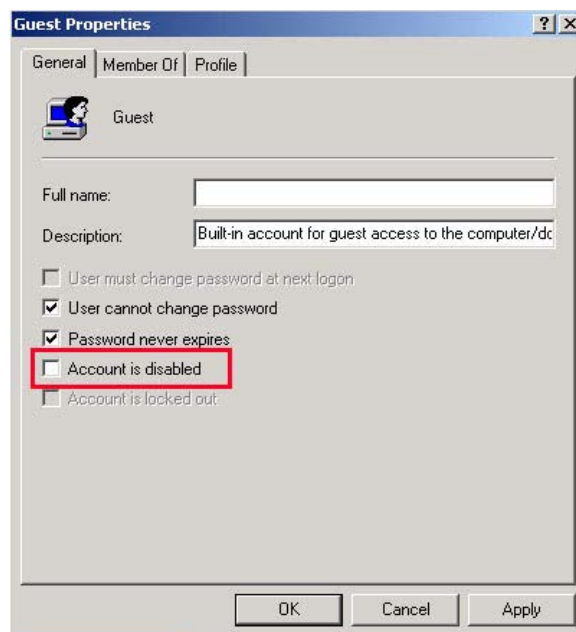
STEP 4

Click the right button on “Guest” and click “Properties”



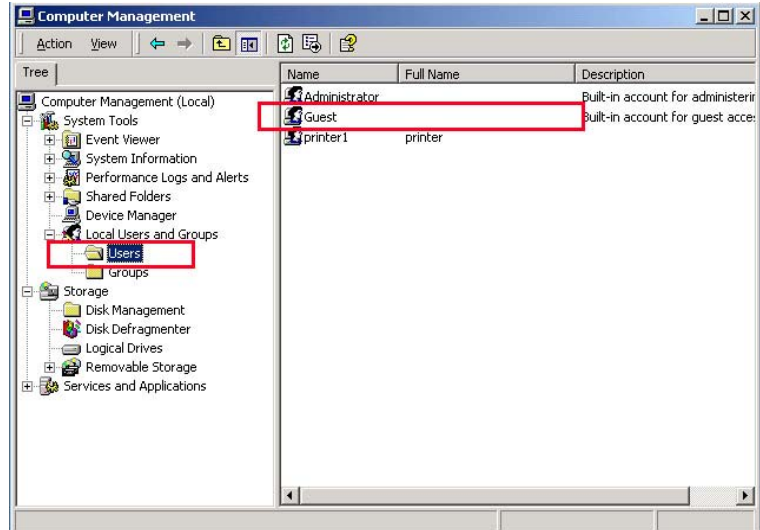
STEP 5

Release the check box on “Account is disabled” and Apply this setting



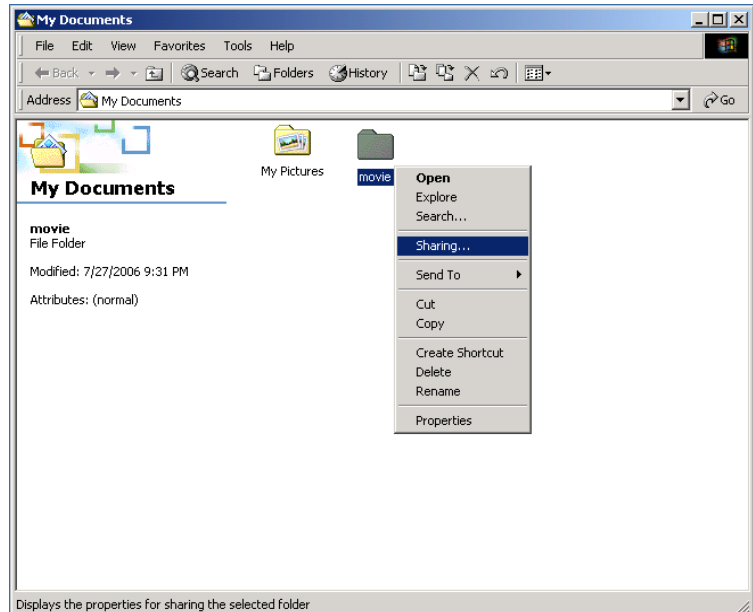
STEP 6

Check that “Guest” will be activated.



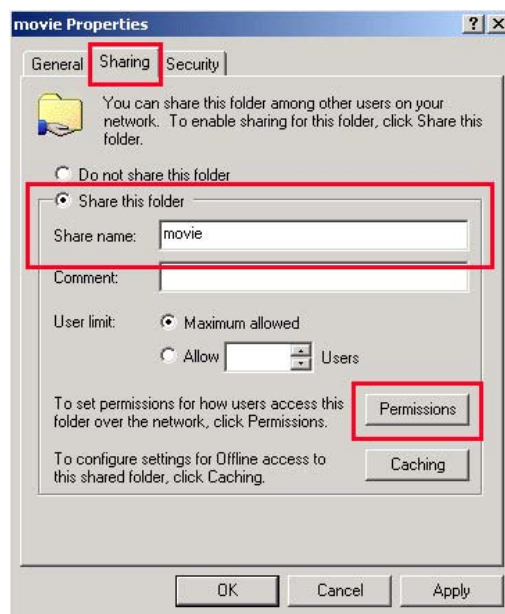
STEP 7

Click right button of mouse on the folder that you want to share and select “Sharing...”



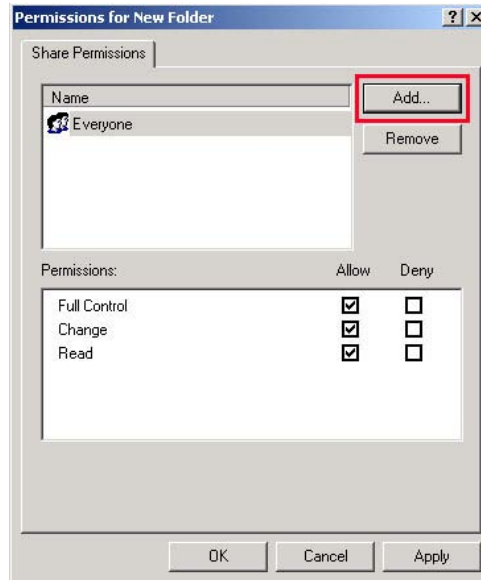
STEP 8

Click radio box on “ Shared this folder” and click the “Permissions”



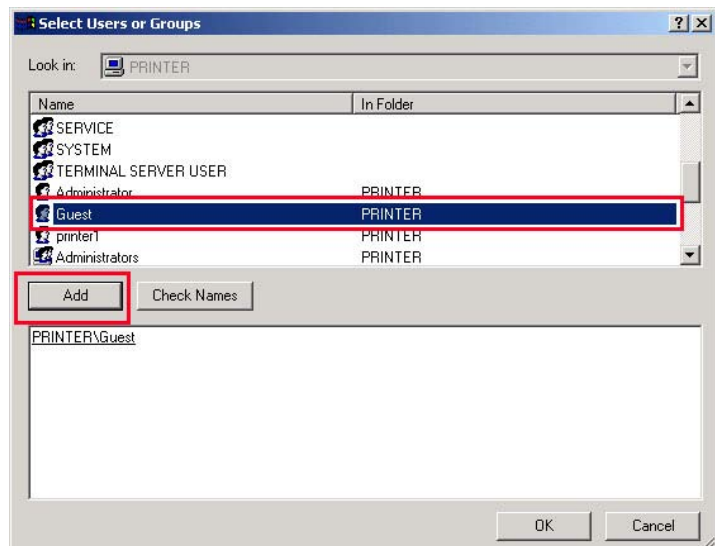
STEP 9

Click the “Add...”



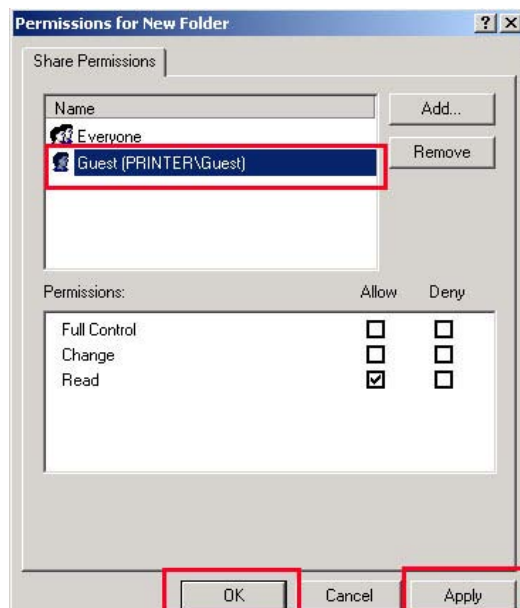
STEP 10

Click the “Add” after selecting “Guest” and Click “OK”



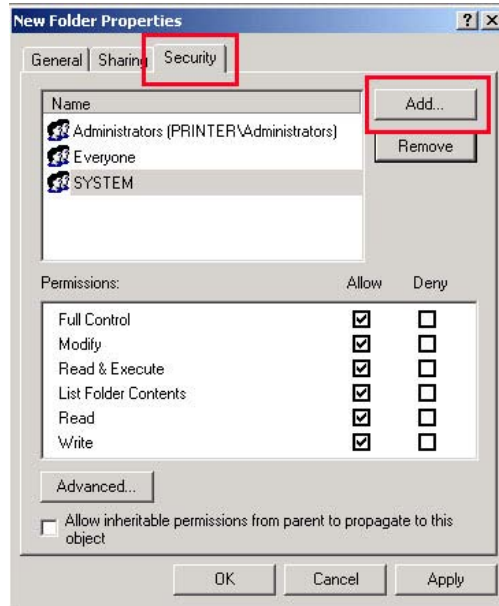
STEP 11

Check the added “Guest” and apply this setting.



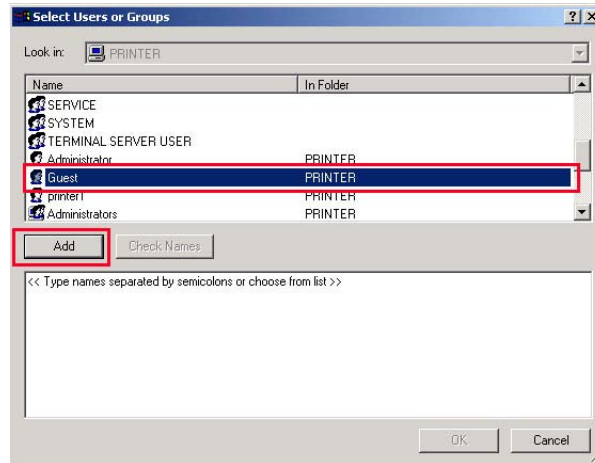
STEP 12

Go to **security** tab and click the **“Add...”**



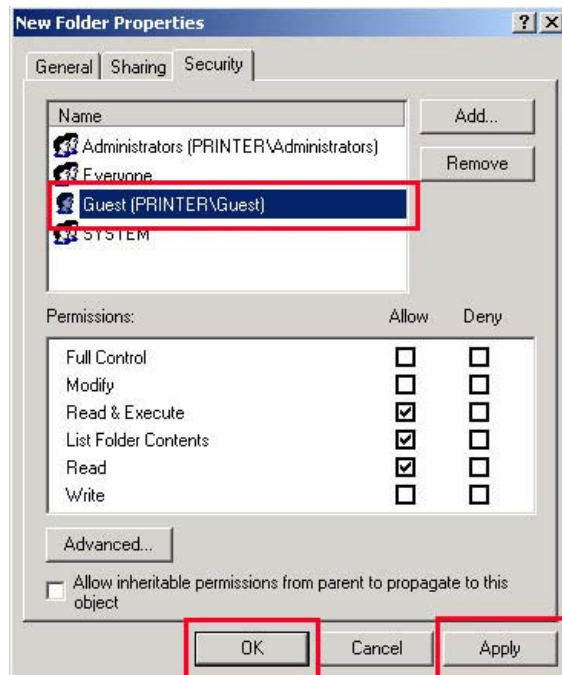
STEP 13

Click the **“Add”** after selecting **“Guest”** and Click **“OK”**



STEP 14

Check the added **“Guest”** and apply this setting.



IP Address Setup :Ethernet Network using a direct connection

Without a router or HUB, you can connect to a PC directly with crossed cable.

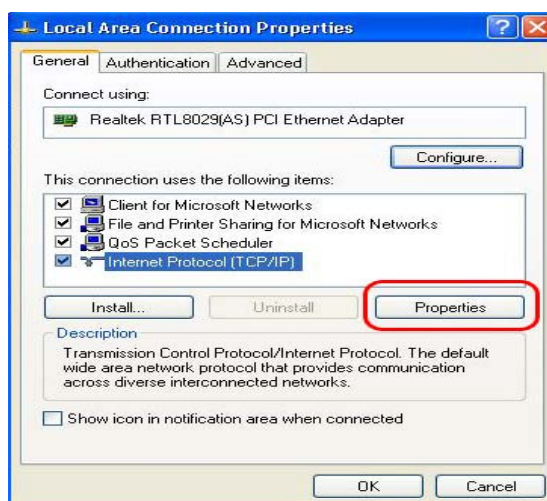
If your PC has only one LAN card and it is already occupied for internet connection, you need one more LAN card for the connection if you use both simultaneously.

Please see the below guides step by step to set IP address.

1. Select Network Connection in the Control Panel. Select the **Local Area Connection** to be connected with this device and click the right button of mouse. Select **Properties**.



2. Select **internet Protocol (TCP/IP)** and click **Properties**.

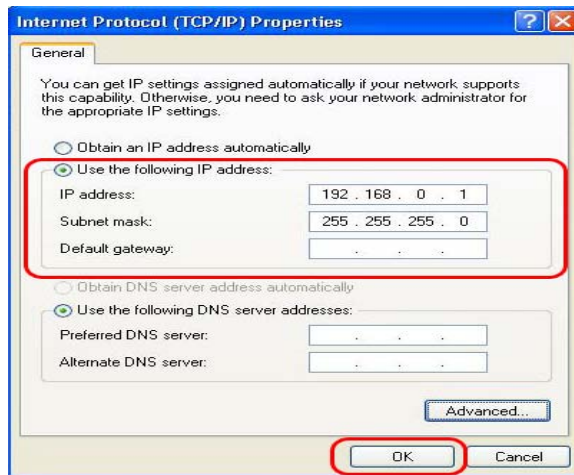


3. Select **“Use the following IP address”**

Enter the IP address below.

IP address 192.168.0.1

Subnet mask 255.255.255.0



5. Then, start NTD38, press **“SETUP”** button on your remote controller and go to **“NETWORK”** section. Select **“Ethernet”** on **“Network Connection”** and **“Static IP”** on **“Address Setup”** Then input the following address.

IP Address 192.168.0.2

Netmask 255.255.255.0

Default gateway 192.168.0.1

Press **“SETUP”** on your remote to exit this menu. Check that **NETWORK** icon is highlighted on main screen.



4

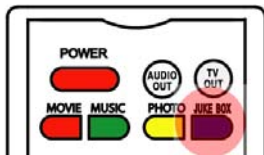
MULTIMEDIA FILE PLAYBACK

This section explains about basic operation for Multimedia file playback.

How to use JUKE BOX CREATOR(BGM)

1. Go to JUKE BOX CREATOR

Click the “JUKEBOX” on screen or press “JUKEBOX” button of remote controller. Then, “JUKEBOX CREATOR” screen will be displayed..

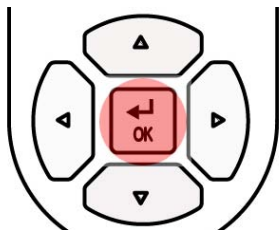




JUKEBOX
+
“OK”

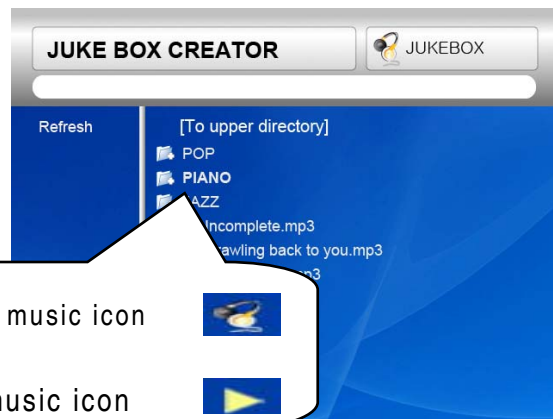


2. Make ‘PLAYLIST’

Select music file and press “OK” button. Then, each selected file will be stored into ‘PLAYLIST’.

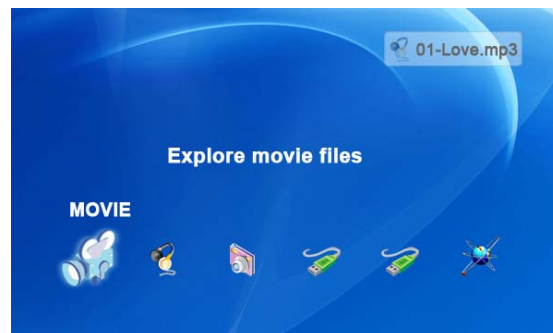


Not selected music icon 
Selected music icon 



3. Playback files stored in ‘PLAYLIST’.

To play selected music files, select the “PLAY ►” on screen and press “OK” button of remote controller. And you may return to file browser screen through “EXIT” on screen. JUKEBOX on/off can be controlled by pressing “BGM ON” button of remote controller. * Note : if you select ‘CLEAR’ on screen and press “OK” button, all files in ‘PLAYLIST’ are deleted.



4. Reference

JUKEBOX function can be used when you do other jobs like Photo Slideshow or On-screen jobs.



Enjoying movie file

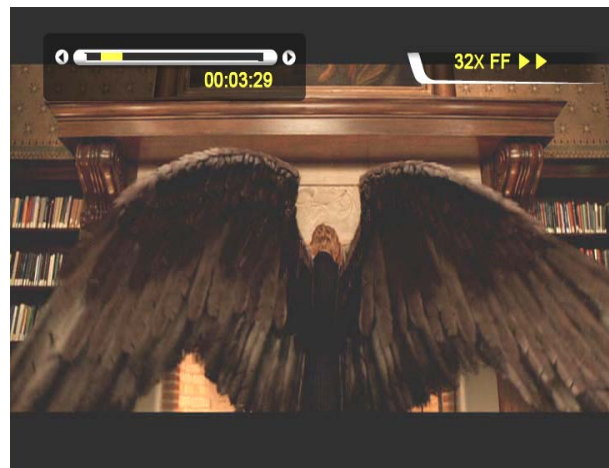
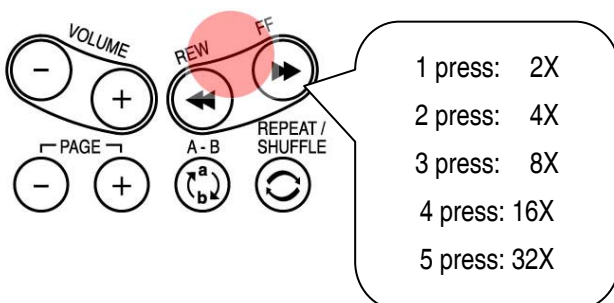
1. Loading Message

Press “PLAY ► || ” or “OK” button to start movie file. When loading a file, this message comes out. Depends on supported file format and size, loading time is different



2. Fast searching

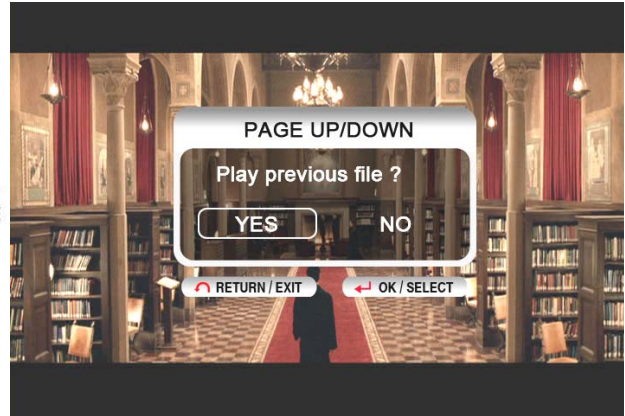
In playing a movie file, you can search the position that you want to see by pressing “REW, FF” button. It supports up to 32X searching.



3. Previous/Next file Playback

Pressing “-PAGE+” button, previous or next movie file will be played.

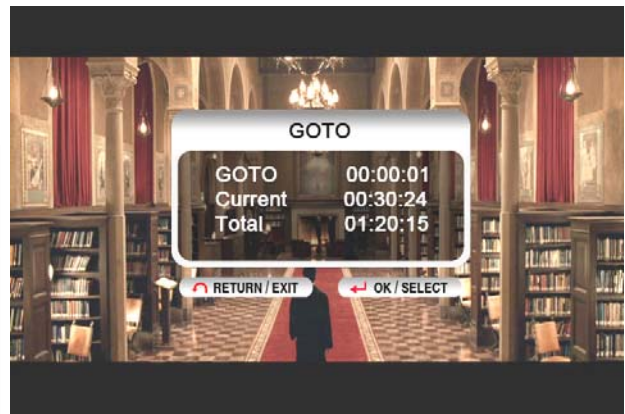
After pressing “-PAGE+” button, Select YES or NO by pressing “◀”, “▶” button and press “OK” button.



4. GOTO function

In playing DVD, if you pressing “GOTO” button, you can go to the specific position that you want.

After pressing “GOTO” button, input the time and press “OK” button
XX : YY : ZZ
 (H) : (M) : (S)



5. Control Volume level

In playing movie file, press “-VOLUME+” button.



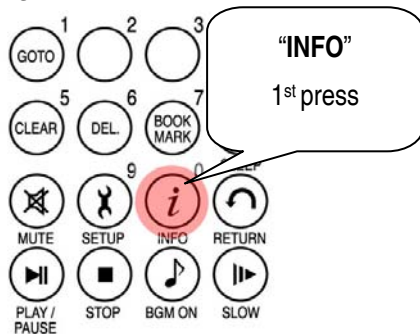
6. MUTE

For sound off, press **"MUTE"** button. To clear this function, press **"MUTE"** button once again.



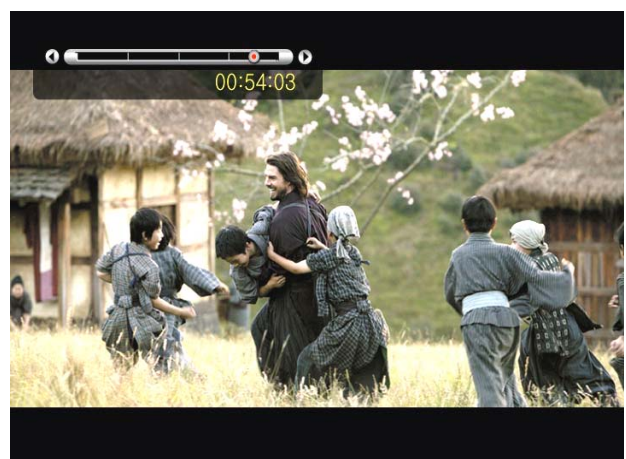
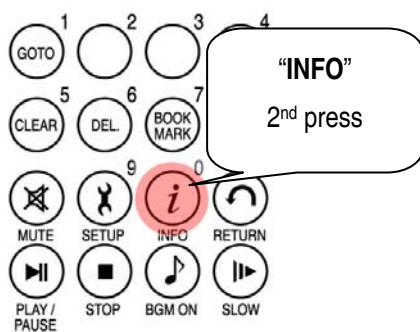
7. Checking information of playing file

In playing movie file, press **"INFO"** button. The playing file information will be shown..



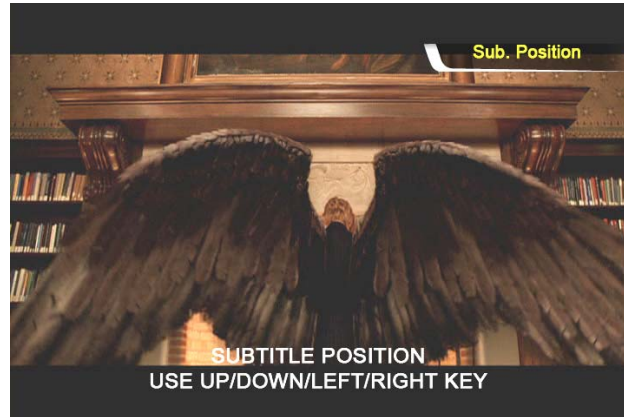
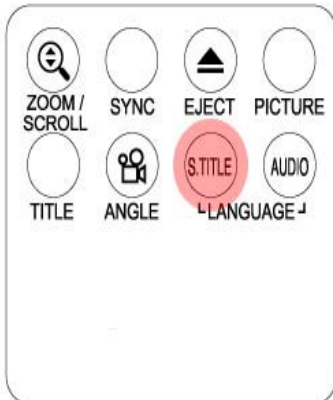
8. Checking current playing time.

To check current playing time, press **"INFO"** button two times. To clear this, press **"INFO"** button once again.



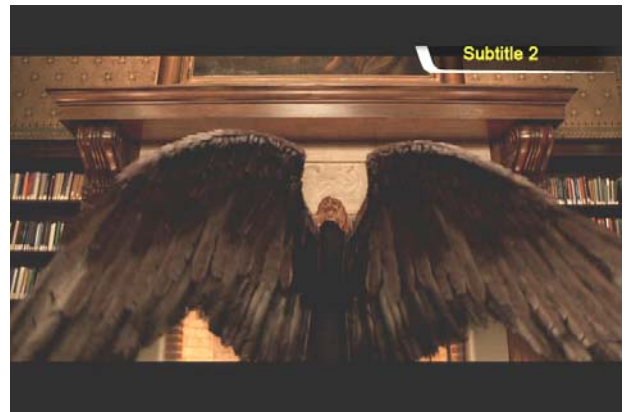
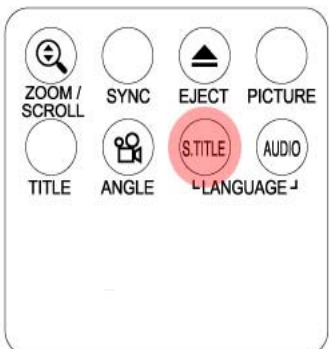
9. Controlling subtitle position and size

In playing movie file, you can control subtitle size and position with S.TITLE button.



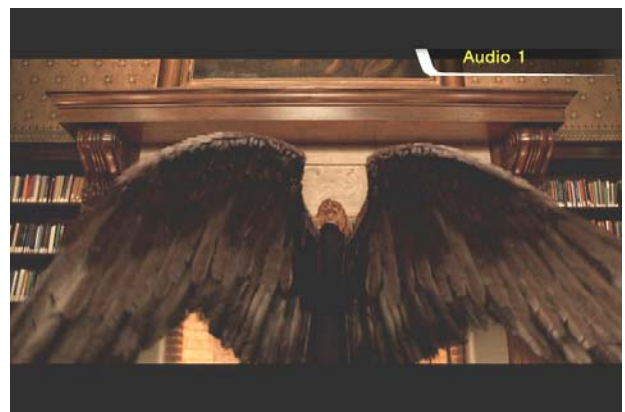
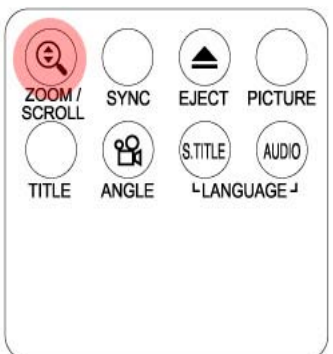
10. Multi Subtitle control

If the playing movie contains multi subtitle, you can select a subtitle that you want to see by pressing "S.TITLE" button. To select subtitle, press "OK" button



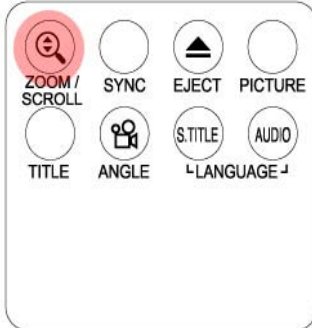
11. Multi Audio control

If the movie file contains multi audio, you can select an audio that you want by pressing "AUDIO" button.



12. Enlarging the screen

To enlarge screen size, press “**ZOOM/SCROLL**” button and control the screen size by pressing directional button(▲▼◀▶).

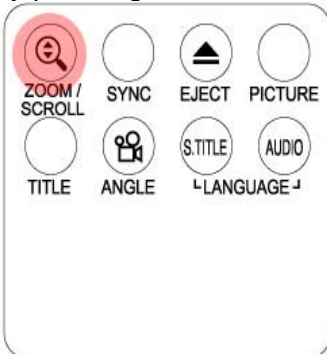


1st press

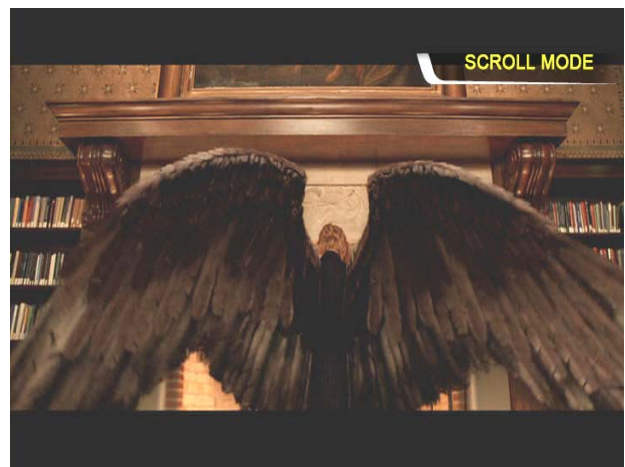


13. Scrolling the enlarged screen

To move enlarged screen, press “**ZOOM/SCROLL**” button once again and move the enlarged screen by pressing directional button(▲▼◀▶).

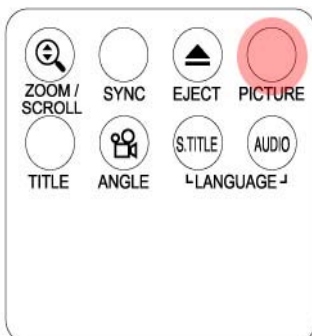


2nd press



14. Screen Color control

To adjust color setting, press “**PICTURE**” Button and control Brightness, Saturation and Contrast by pressing directional button(◀▶).



1st ~ 3rd press



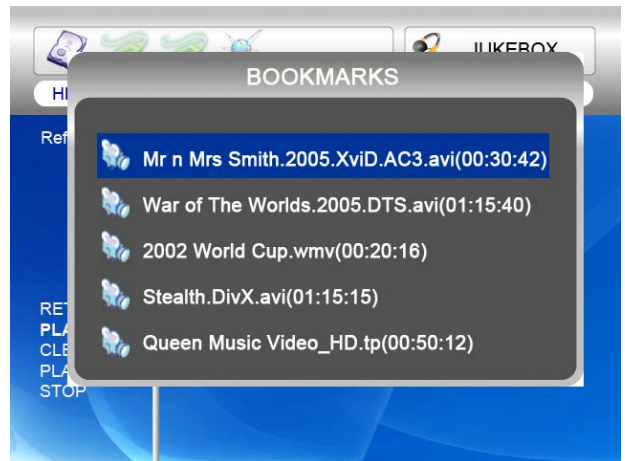
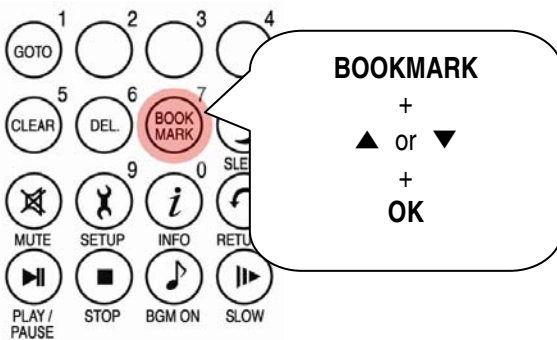
15. Memorizing a specific position

In playing movie file, the current playing position is saved by pressing “**BOOKMARK**” button.



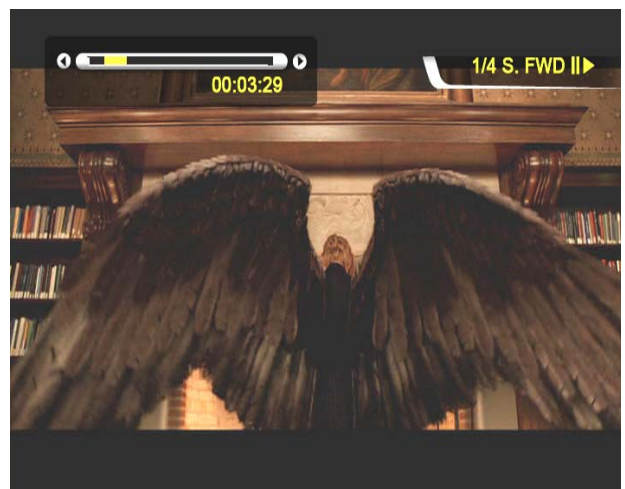
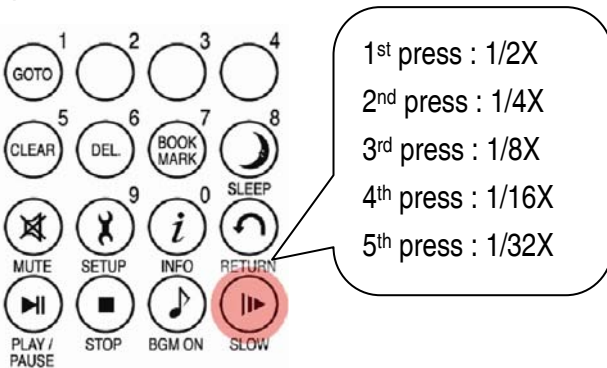
16. BOOKMARK list

Pressing “**BOOKMARK**” button again, the latest Bookmarked List is shown. (Max. 5 lists)



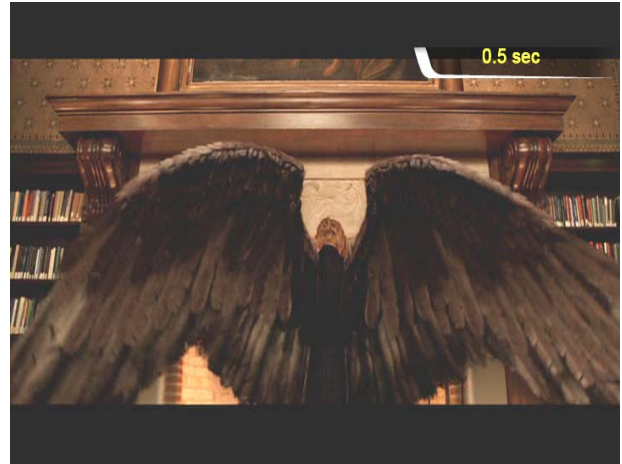
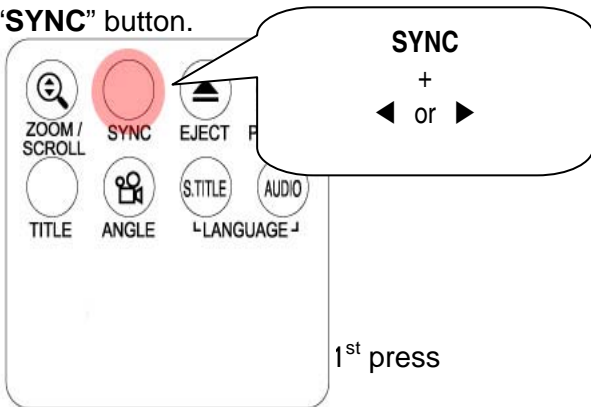
17. Playback with slow speed

This device supports 'slow playing back' function up to 1/32X.



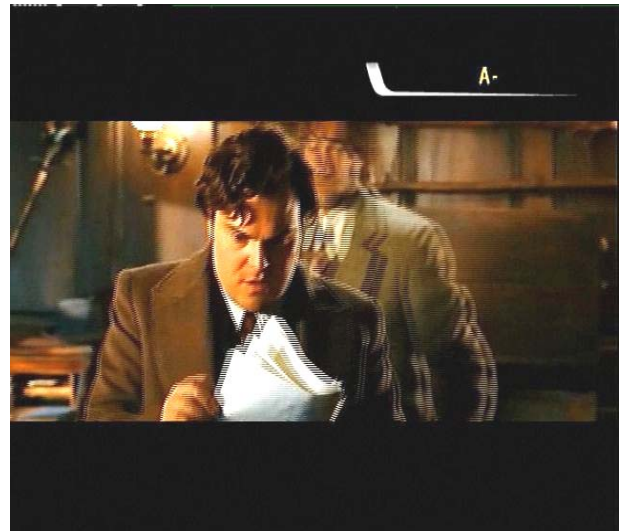
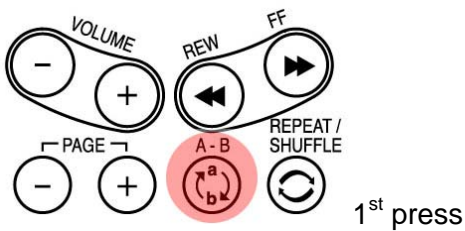
18. Control subtitle sync

If a movie and a subtitle do not match, you can control a subtitle showing time by pressing “SYNC” button.



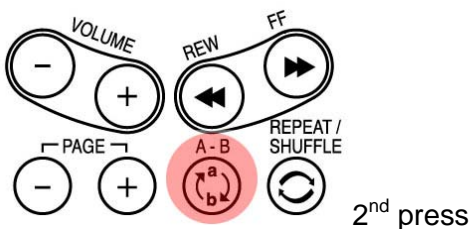
19. Section Repeat – Set the beginning point

Press “A-B” button once to select the beginning “A-” point.



20. Section Repeat – Set the ending point

Press “A-B” button again to select the Ending “-B” point. A-B section will be repeated. To clear this setting, press “A-B” button once again.



*Note : This function is useful for language study or enjoying sports moving picture.

Creating DVD Library and Enjoying it

You can create your own virtual DVD Library by storing your private collection of DVDs

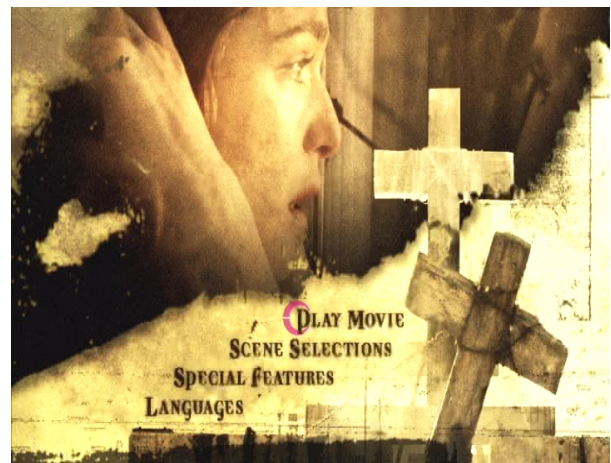
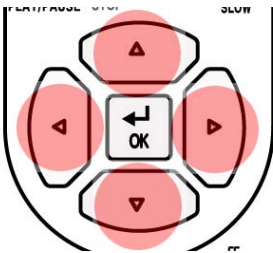
1. How to play.

As this device supports IFO and ISO file, you can create your own DVD library by storing your private collections of DVD in it

- * IFO : Information file commonly found on DVDs. Such files contain navigational information..
- * ISO : One image file backup of the DVD title.
- * FAT32 file system only supports up to 4GB.
- * NTFS file system is unlimited.

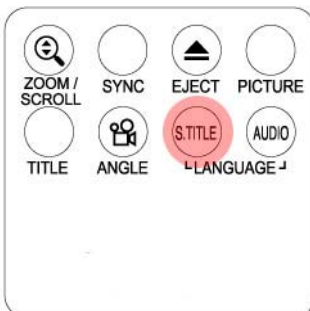
2. DVD menu controlling

Using directional button, you can select DVD menu from DVD menu screen.



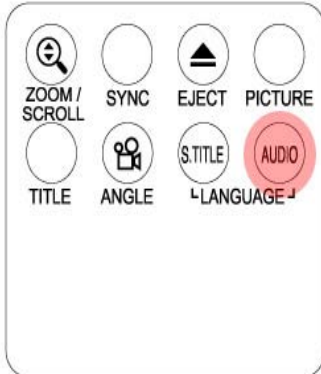
3. Multi Subtitle Language Selection

In playing DVD, you can select a subtitle language that you want by pressing "S.TITLE" button.



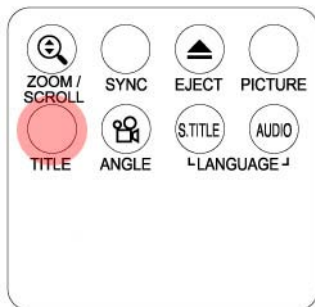
4. Multi Dubbing Audio Selection

In playing DVD, you can select a dubbing audio that you want by pressing “AUDIO” button.



5. Return to DVD menu Screen

In playing a DVD, you can go to DVD menu screen by pressing “TITLE” button. When you play DVD again after setting, it starts from stopped position of DVD.



6. GOTO function

In playing a movie, you can go to the specific position that you want by pressing “GOTO” button.



- Volume control, color setting and media information are same as “Enjoying movie file” functions.
- To go next or previous chapter of DVD, use “-PAGE+” button.

Enjoying Music Library

This device supports mp3, WMA, OGG, M3U and PLS files.

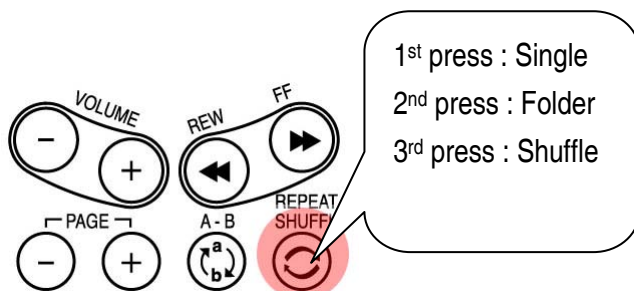
1. How to play

Select a files in a folder that contains music files and push “PLAY ► ||” button .



2. How to change Music Play Mode

In playing a music file, you can change play mode by pressing “REPEAT/SHUFFLE” button.



3. M3U and PLS file support

This device supports M3U playlist and PLS playlist by created WINAMP. To play these files, music files linked with M3U and PLS should be in same HDD partition.



Enjoying Photo Library

This device supports JPG, BMP and PNG files.

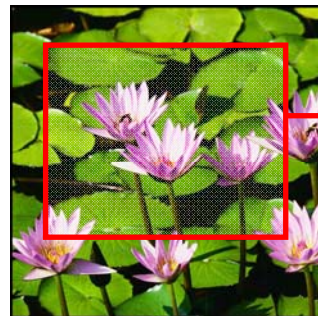
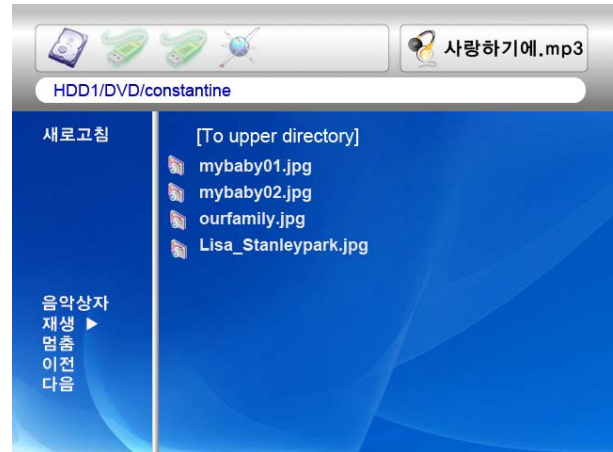
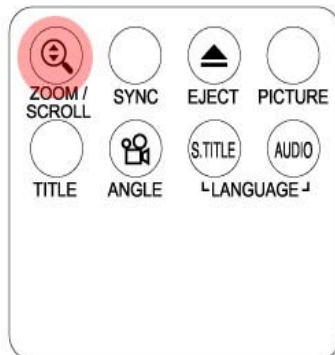
1. How to play.

Select a files in a folder that contains photo files and push “**PLAY ▶ ||**” button. Basically, all photo files in same folder are played slideshow with 10 seconds interval. You can change slideshow time delay setting on “**ETC**” section of SETUP Menu. If you want to see one photo file only, please push “**OK**” button instead of “**PLAY ▶ ||**”.



2. ZOOM / SCROLL of photo

You can enlarge the photo with direction keys of remote controller after pushing “**ZOOM/SCROLL**” button of remote controller one time.



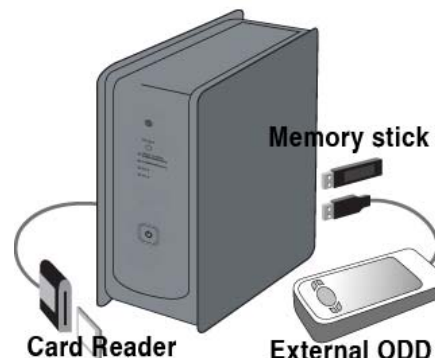
Color setting function is same as “**Enjoy Movie**”.

External USB devices connection

Various external USB devices can be attached to USB HOST ports of this device.

1. Connecting various external USB devices

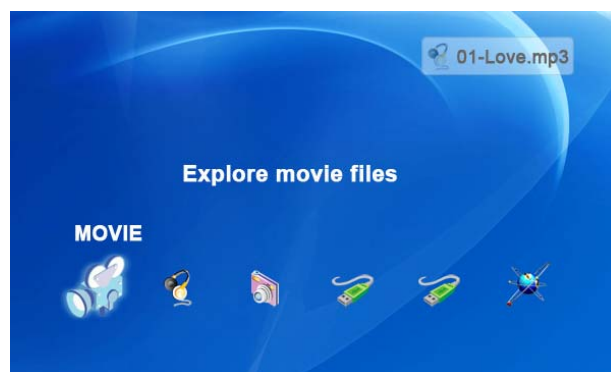
With USB host function, this device supports external USB devices like hard drives, memory sticks and USB card readers up to two devices one time.



2. USB connection usage.

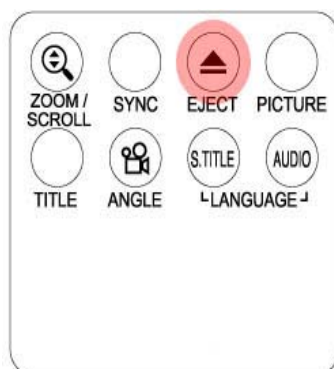
Once you have connected your device properly, you can access the files in the USB device by pressing the highlighted USB icon.

	TIP	NOTE
NTD38 supports mass storage device in “read only” mode only.		



3. ODD tray controlling

NTD38 controls ODD tray on and off by pressing “EJECT” button when ODD USD device is connected.



5

Firmware update

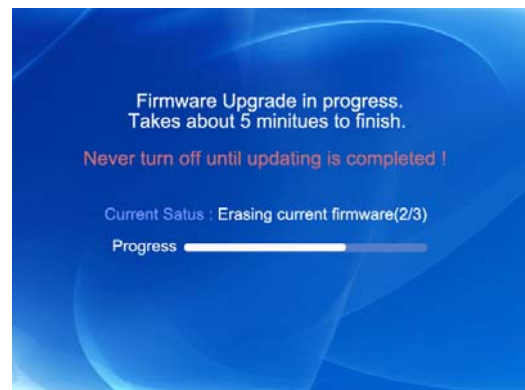
This section explains how to update firmware.

Getting the latest firmware to enjoy the added features and improved function.

1. Firstly, visit the designated website(Please ask the shop where you bought this device). You can download the newest firmware and save it on your PC.
2. Please extract the compressed firmware file and move or copy the file into this device through USB cable. If this device is connected an internal network, installing the newest firmware via internal network is also possible without copying the firmware file into this device. In this case, the firmware file should be stored in the shared folder of PC.
3. Connect this device to a TV and power it on. Click the “**SETUP**” button on remote controller and go to ETC setting section of SETUP.
4. Select “Firmware update” and search the folder where the new firmware file is saved.



5. Select update file and push “**OK**” button on remote controller.
6. Firmware update will start automatically when you select “Yes” on confirmation message box.
7. this device will power off in 10 sec automatically after update process is completed successfully.



8. Power on this device again, then go to “ETC” section of SETUP. Select “Factory Reset” and press “OK” button for factory reset. And, power it off again. After this, you can enjoy with new firmware.

*** Caution !!!**


While updating, please make sure that this device is not powered off. If powered off while updating, it has not been repaired from customer service center.

6

HDD Partition and Formatting

This section explains how to make partition and format the HDD installed in this device.

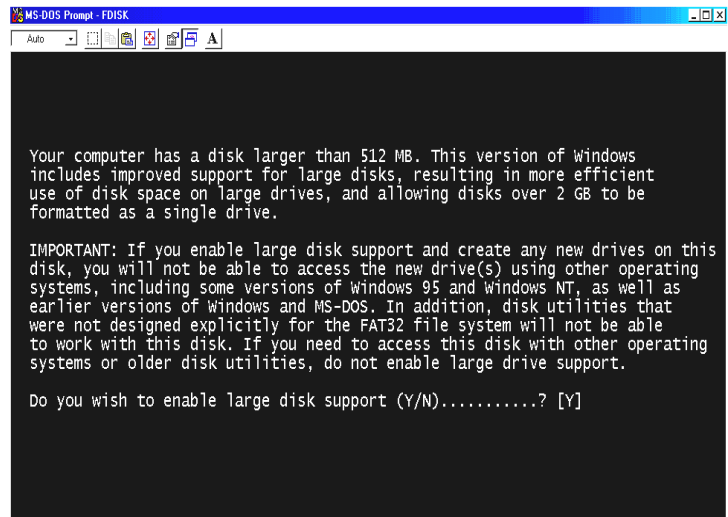
Under Window 98SE/ME environment

 TIP	Single partition is recommended.
Even if this device supports multi partitions, we recommend single partition for your convenient using.	

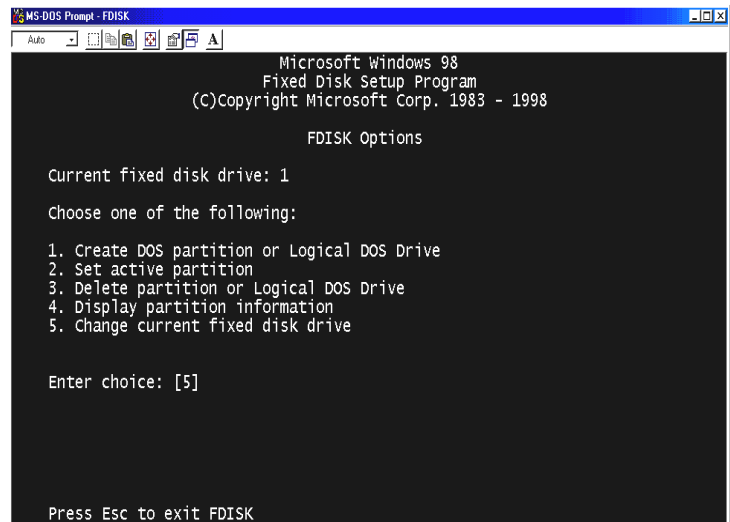
1. Open command prompt program(Start→ Program → MS-DOS Prompt)

2. Type “**fdisk**” and click enter.

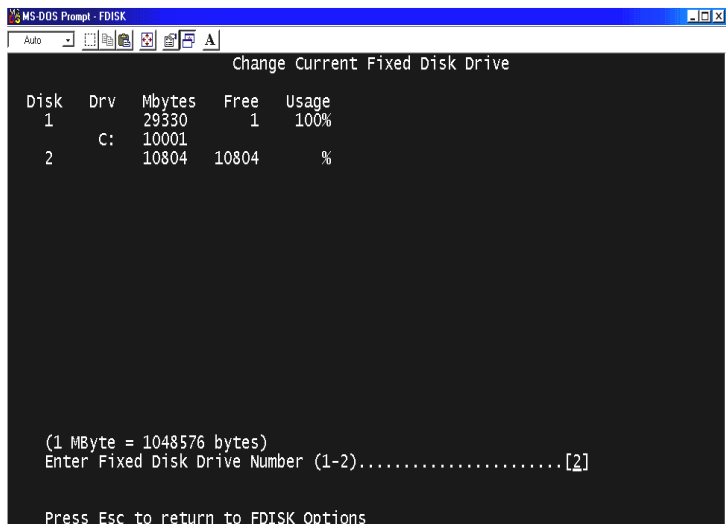
Select “Y” to enable large disk support.



3. Click "5" to change current fixed disk drive.



4. Select the last Disk number that you want to initialize.

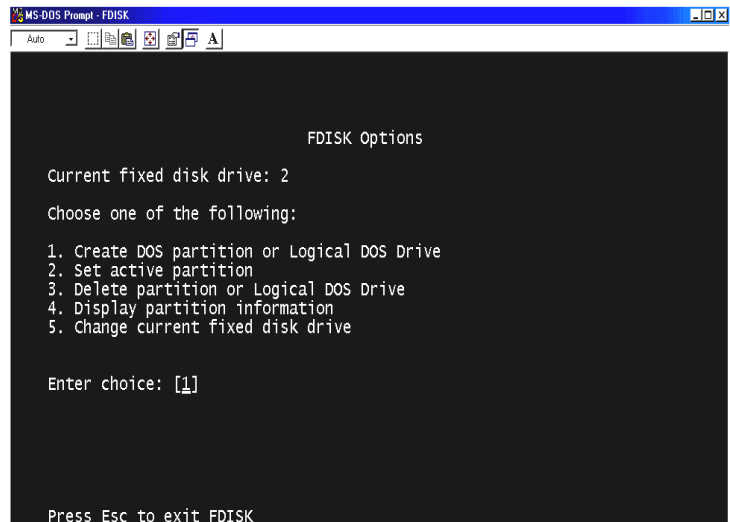


TIP

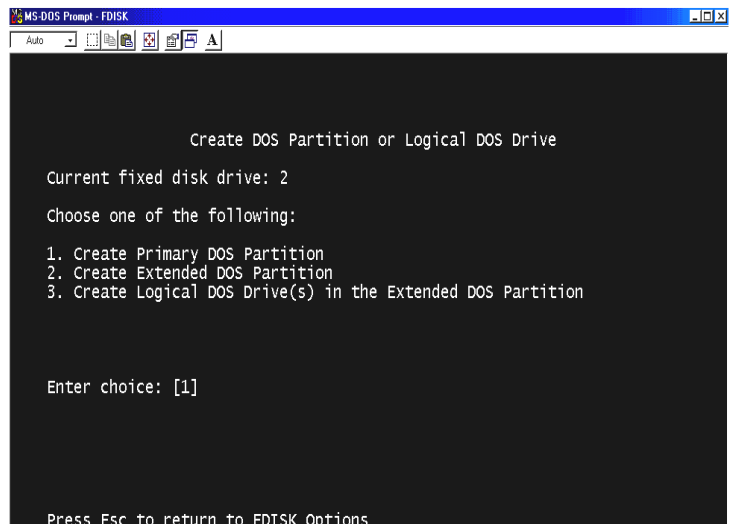
In case of more than 2 HDDs

In case that there are several hard disk drives in your PC, the disk number may be changed. In this case, you can select the number corresponding to each percent("%").

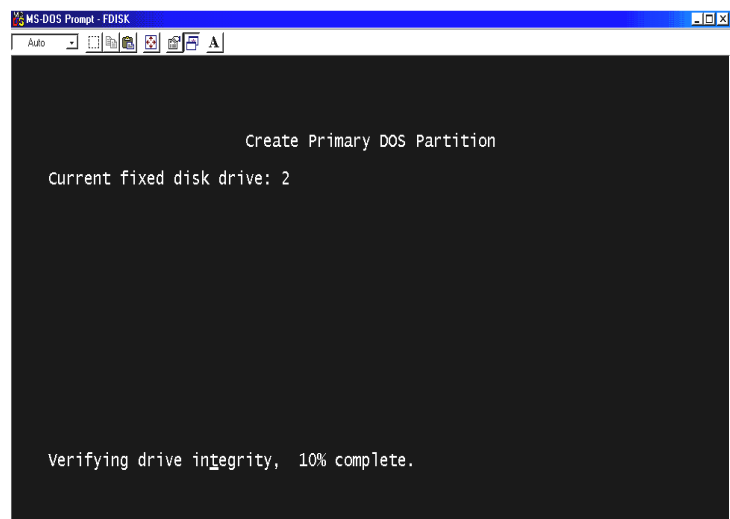
5. Select "1. Create DOS partition or Logical DOS Drive .



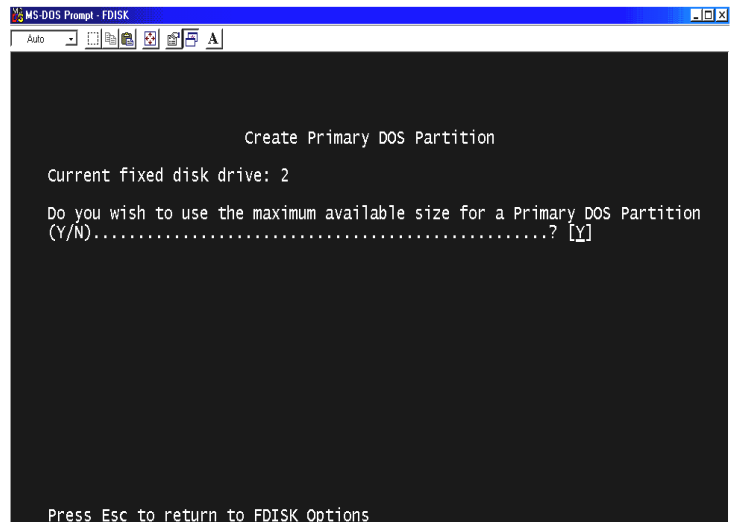
6. Select "1. Create Primary DOS Partition".



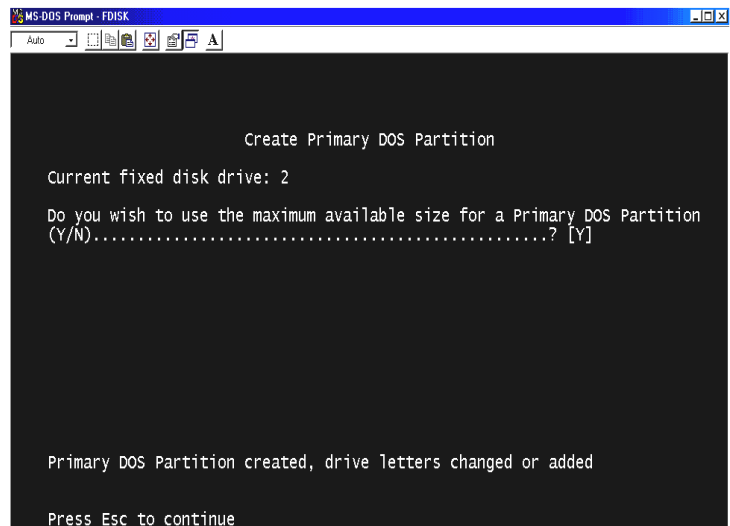
7. Wait to be finished verifying drive integrity until 100%.



8. Select “Y” and Enter to use the maximum available size for a Primary DOS Partition.

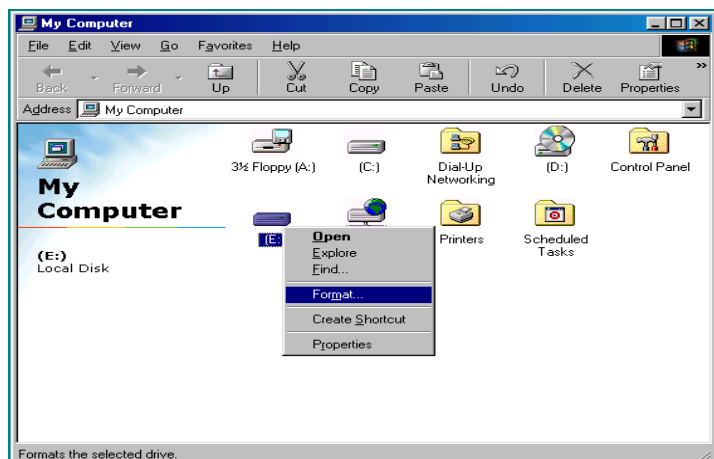


9. Wait to be finished verifying drive integrity once again and click “ESC” two times to finish MS-DOS prompt program.



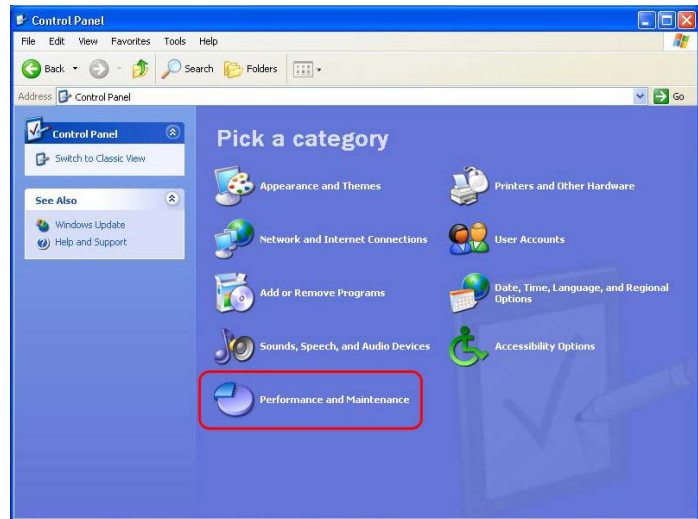
10. Reboot your PC.

11. After restart, the new hard disk drive will be shown on My Computer. Click the right button of your mouse and select “Format” to be formatted.

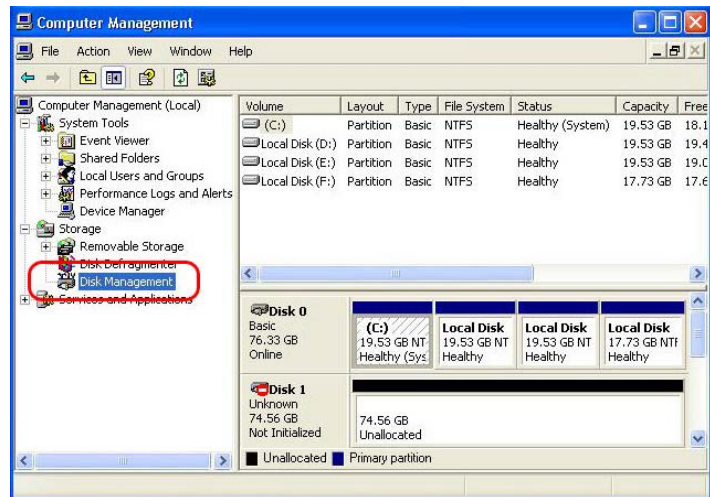


Under Windows 2000/XP environment

1. Click the Start and go to Control panel. Then, select **“Performance & Maintenance”**



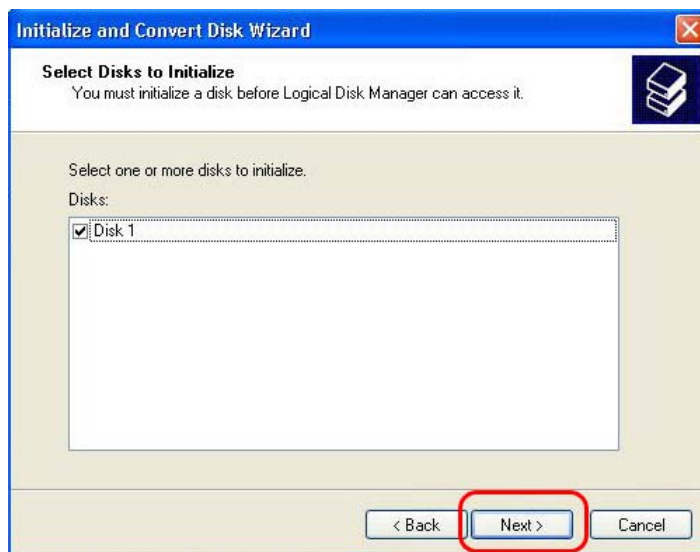
2. Select **“Computer Management”** and go to **“Disk Management”**.



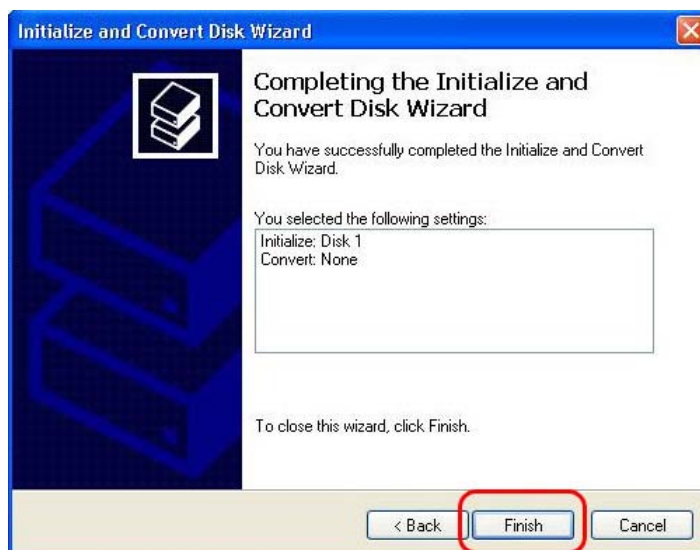
3. Click the next on **“The initialize and Covert Disk Wizard”** window.



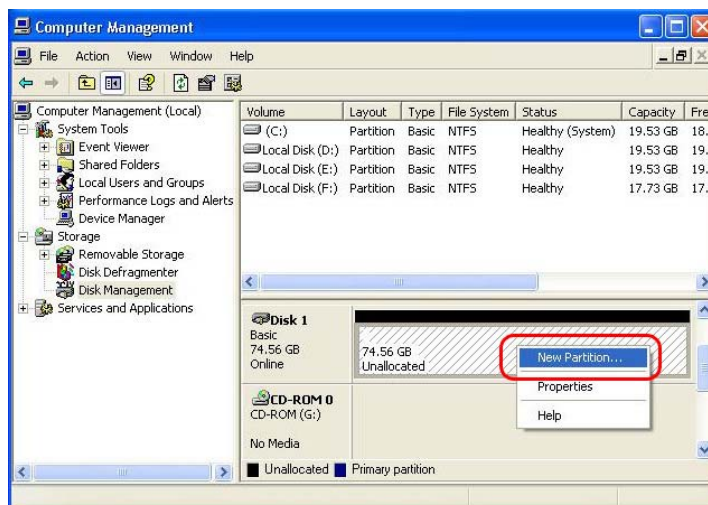
4. Select disk to initialize and click the next.



5. Click the Finish on "Completing the initialized and convert Disk Wizard" window.




6. Click the right button on your mouse and select the "New Partition...".

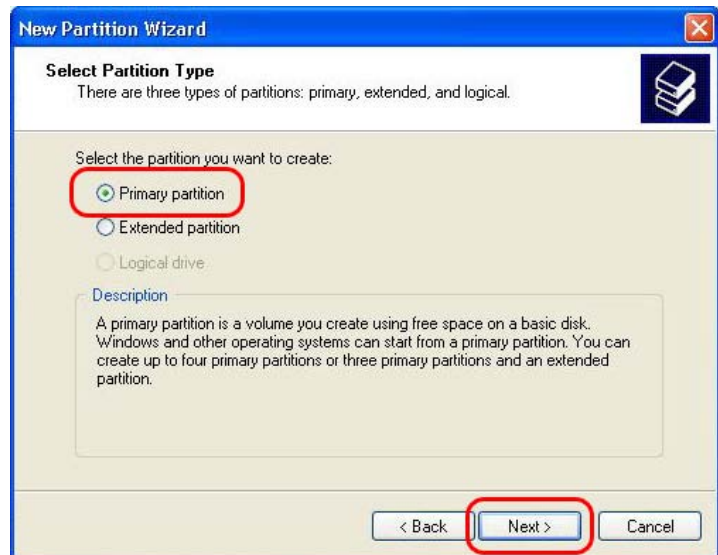


7. Click the next.

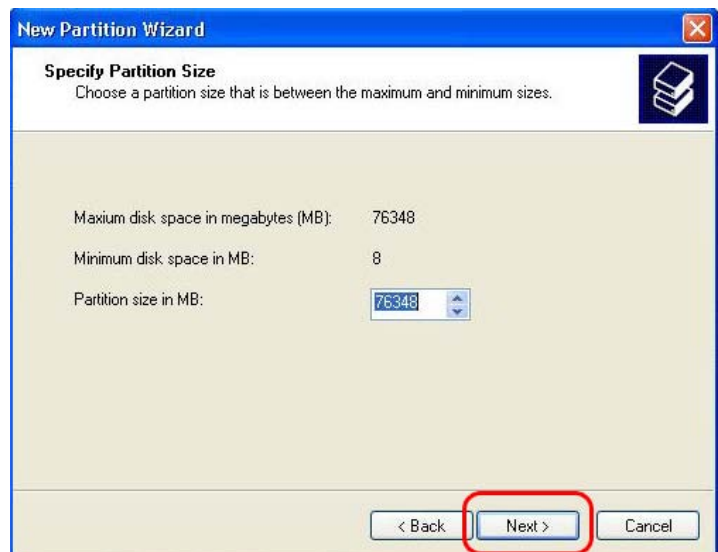


8. Select "Primary partition" and Click the next.

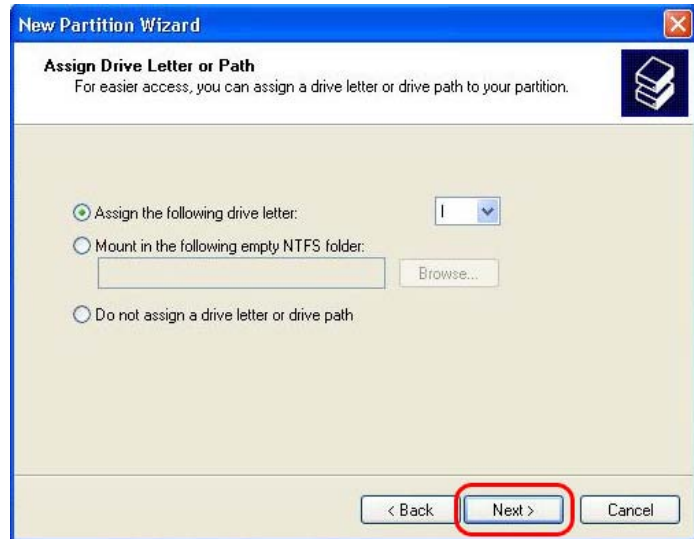
 TIP	Important
WIRELESS CINE BOX ULTRA work properly with TV in case of Primary partition type only.	




9. Specify partition size and click the next.(10GB = 10000 MB)

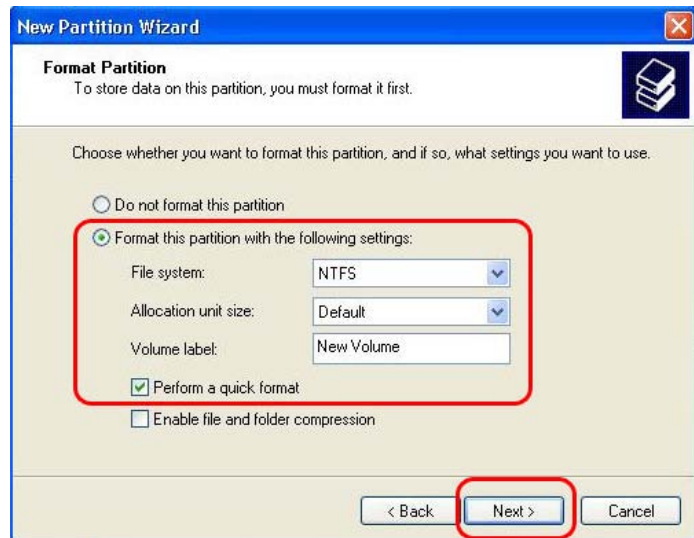


10. Click the next.
(Drive letter will be assigned automatically)

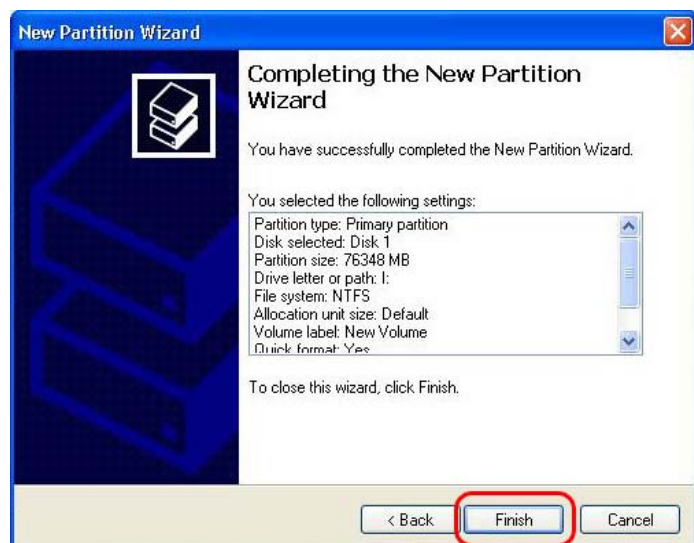


11. Select file system and click the next.
(FAT32 can not be selected over 32GB HDD).

 TIP	Important
Do not check "Enable file and folder compression."	



12. Click the finish to close "The New Partition Wizard".



13. After setup the New Partition Wizard, the new HDD will be formatted automatically. Please wait until 100% formatting is completed.



Troubleshooting

Before contacting Customer Service Center, please check below points first.

Problems related to TV screen

1. In case of no-display on the TV screen.

- Check if TV Out mode is set properly with your TV or Monitor. You may use TV OUT button of remote controller. Press this button several times with 2~3sec time interval.
- Check whether you set your TV as Video input or Component input.
- Check if A/V cable or Component cable is connected properly and firmly.
- Check if the file that you want play is supported by this device.

2. Much noise on TV screen.

- Check whether video cable is connected properly and tightly.
- Check if TV Out mode is matched with your TV, or not.
- In case that you connect this device to TV indirectly through DVD player or VCR, etc, there may some noise on TV screen. Please connect this device to TV directly.
- In case there is some moisture inside this device when you move it from cold outside to warm inside, you need to wait for some time until it is conformed to inside temperature.

3. In case that the size of playing picture does not fit to TV screen.

- As aspect ratio is fixed, please set it properly again in the SET-UP menu..

Problems related to Sound

1. In case of no-sound or much noise

- Check whether stereo cable (A/V cable) is connected properly and tightly between this device and TV set.
- Check if [MUTE] button is pressed and volume level is set properly
- Check whether digital audio cable is connected properly and tightly to the audio input connectors of Home Theater System or Audio Amplifier
- Try changing the value(Down mix or pass through) of Audio Out on SET-UP menu
- Try changing audio cable with new one.
- Check the Audio channels(2channel or 5.1 channel) on SETUP MENU

2. In case of no-sound or bad sound quality when connected with digital audio system

- Check the Audio channels(2channel or 5.1 channel) on SETUP MENU
- Set as 'pass through' on SETUP menu.
- Check the status of connection and set up for digital audio system(Refer to the manual of digital audio system)
- Check whether optical cable or coaxial cable is connected properly and tightly

Problems related to HDD or Remote Controller

1. In case that this player does not recognize HDD

- Check whether the root folder or specific folder contains too many files. In this case, make sub folders and move some files to the sub folders to reduce files number in specific folder.
- Check whether HDD is connected with this device properly(Check SATA flat cable and power cable)
- Check whether HDD is formatted properly(It should be based on 'Primary partition' and you must not check 'file and folder compression' option in formatting HDD)
- Check HDD jumper setting(It must be set as 'Single' or 'Master')
- Try changing with new HDD(There may be some problem in HDD itself caused by impact or damage from outside.)

2. In case that PC does not recognize this device as external USB mass storage.

- If PC is operated by Windows 98SE, you need to install the USB driver for Windows98SE into your PC properly.
- Check whether this device is powered ON.(It should be powered ON)
- Try changing with new HDD (There may be some problem in HDD itself caused by impact or damage from outside.)


3. In case that Remote Controller does not work properly.

- Check if there is any obstacle between remote controller and IR Receiver of this device.
- Check battery of remote controller.
- Check whether the IR receiver is exposed to strong light such as direct sun light.

Problem related to NETWORK

- As the network is not set up correctly. Try setting up again according to “Setting up NETWORK(Page 31)
- Check cable connection status. Cables should be connected to each port of the Router or switch HUB properly.
- This device and PC are not on the same NET MASK(Subnet)
- Wrong IP address input, check the IP address and subnet mask

The NETWORK icon is activated, but can not read the Shared DATA. In this case, check whether firewall is set in PC. If firewall is set, please disable it for this device to communicate with PC.

 TIP	Contact to below for Customer Service.

B

SPECIFICATION

High Definition Multimedia Player	
File Playback Format	
Video	MPEG1/2/4, XviD, DivX, WMV9, WMV9HD, H.264, HD File(.tp, .trp, .ts), .MKV, .WMV, AVI, .ISO, .IFO, .VOB, .MPG, .ASF, .DAT
Audio	MP3, WMV, WMA, Ogg Vorbis, AC3, PCM, DTS
Picture	JPEG, BMP, PNG, GIF
Subtitle	SMI, .SUB, .SRT
Display	2inch TFT-LCD
Output Connection	
Video	HDMI, Component, Composite, S-Video
Audio	Digital : Optical & Coaxial, Analog :Stereo
e-SATA	NO
Interface USB	1xUSB 2.0 Target Port, 2xUSB 2.0 Host Port
Network	Ethernet(100Base-Tx/10Base-T) & Wireless LAN(IEEE802.11b/g)
NDAS(Network Storage)	YES
HDD / Format	3.5inch SATA HDD Interface / NTFS, FAT32 Supported
Compatible Operating System	
USB Storage	Windows 98SE, ME, 2000, XP, Vista
Network Playback	Windows 98SE, ME, 2000, XP, Vista
NDAS	Windows 2000, XP, Vista
Original DVD supported through USB Host : *As we have CSS license, you can play back original DVD title through USB host port if you connect DVD drive into USB host	
Physical Dimension & Weight	
Dimensions (mm)	W(95 mm) x D(190 mm) x H (145 mm)
Weight(g)	730g (Excluding HDD), Approx.1 240 g (Including HDD)
Power / Operating	
Power Adapter	Input : AC100V ~ 240V 50/60Hz 1,5 A Output : DC12V 3.0A
Operating	Temperature : 0 ~ 40 ° C Humidity : 10 ~ 70 %

* note : specification may be changed without any notification