



Nine Eagles™

FREE SPIRIT MICRO and SOLO

Instruction Manual



NOTHING FLIES LIKE NINE EAGLES

NE R/C 210A Co-axial Helicopter

[www. NineEagle. com](http://www.NineEagle.com)

210A 090106

CONTENTS

Anyone No Experience can Fly Easy Necessary!

2.4GHz 4CH Fly in Ultra-Small Space!

Latest and Unique Ultra-Micro 0.95Oz(27g) Heli in the world!

INTRODUCTION.....	2
Warning.....	3
Note on Lithium Polymer Batteries.....	5
Instructions for Disposal of WEEE by Users in the European Union.....	5
Additional Safety Precautions and Warnings.....	6
FCC INFORMATION.....	7
PRODUCT LIST.....	8
Additional Equipment.....	8
Flight Preparation.....	8
Li-Po Battery Warningand Guidelines.....	9
Operation Method.....	9
Battery Charging.....	11
Installing the Transmitter Battery.....	12
Installing Li-Po Battery to the Helicopter.....	12
Transmitter Control Identification.....	13
Set up the Primary and Advanced Control Switch.....	15
Transmitter Mode Switch Function.....	15
Control Test.....	16
5-in-1 control unit description, arming and motor control test.....	18
Primary Flight Training.....	21
Choosing a Flying Area.....	25
Control FREE SPIRIT MICRO and SOLO.....	25
Transmitter and Helicopter binding.....	28
Exploded View Parts Listing.....	29
Exploded View	30
Maintenance List.....	32
Optional Parts List.....	33
Safety Precautions.....	33

INTRODUCTION

FREE SPIRIT MICRO and SOLO are the latest 4 CH ultra mini-helicopters. Their excellent control function offering first-time pilots the ability to control them easily. FREE SPIRIT MICRO and SOLO adopt coaxial, counter-rotating rotor head design and latest 2.4GHz technology, making the helicopters unsurpassed stability and easy to flight and the dimension of the whole helicopter is only: 8.39¹¹(213mm)x7.40¹¹ (188mm), weight only: 0.95Oz(27g), making these two kind of helicopters can easy fly indoor anywhere. Just as drawing room, bedroom and even office.

FREE SPIRIT MICRO and SOLO come out 100% factory-made and assembled, flight-tested and ready to fly right out of the box, you can enjoy the flight without assembly or setup required. including in the box is the Free spirit micro /solo airframe, Li-Po Battery, Four (4) AA battery, 2.4GHz transmitter which offers freedom from frequency restrictions and allows the FREE SPIRIT MICRO and SOLO to be flown indoors or a suitable area, anytime.

Though our products: FREE SPIRIT MICRO and SOLO possess stable flight function from the factory, we strongly suggest reading through this manual completely and check the battery and the charger function, then control helicopters.

Feature:

1. Perfect airframe design and best electronic component offer credible durability.

2. THREE UNIQUE INVENTION PATENT in the world:

A. Charge directly on the transmitter

B. Easy installation of battery

C. Allow Mode 1 to Mode 2 only by switching antenna

Warning

Start process:

1. Slide the Li-PO battery into the slot on the helicopter.



2. Turn on the transmitter.



Misoperation

1. Turn on the transmitter.



2. Slide the Li-PO battery into the slot on the helicopter.



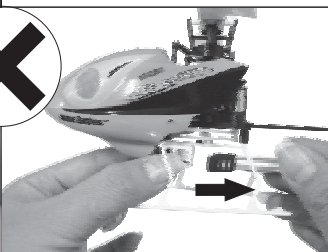
Right operation

Shut down process:

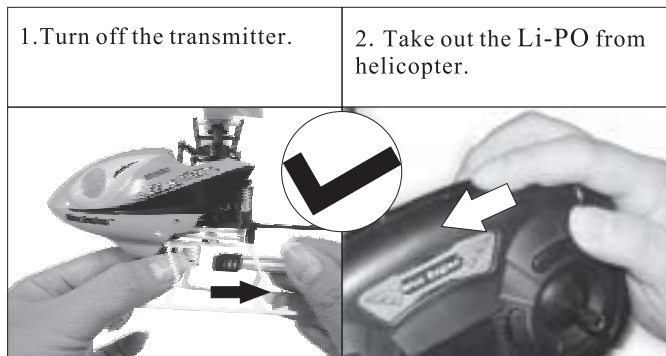
1. Turn off the transmitter



2. Take out the Li-PO from helicopter

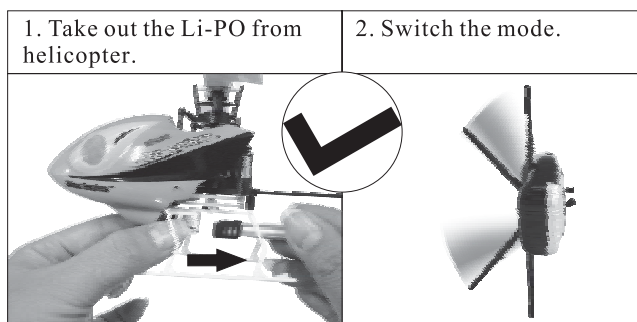


Misoperation

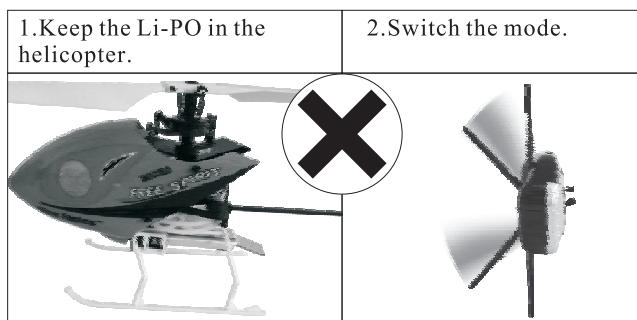


Right operation

Switch the mode process:



Right operation



Misoperation

Warning: Failure to comply with any of the instruction of this manual to mis-operation , it could lead to unnecessary injury .

An R/C helicopter is not a toy! If misused, it can cause serious body harm and damage to property. Fly indoors or a suitable area, in open areas following all instructions and as recommended in this manual. Keep loose items that can get entangled in the rotor blades away from the main and tail blades, including loose clothing, or other objects such as pencils and screwdrivers. Ensure that yours and other people's hands, and face are kept away from the rotating parts.

Note on Lithium Polymer Batteries



Lithium Polymer batteries are significantly more volatile than alkaline or NiCd/NiMH batteries used in R/C applications. All manufacturer's instructions and warnings must be followed closely. Mishandling of Li-PO batteries can result in fire. Always follow the manufacturer's instructions when disposing of Lithium Polymer batteries.

Instructions for Disposal of WEEE by Users in the European Union



This product must not be disposed of with other waste. Instead, it is the user's responsibility to dispose of their waste equipment by handing it over to a designated collections point for the recycling of waste electrical and electronic equipment. The separate collection and recycling of your waste equipment at the time of disposal will help to conserve natural resources and ensure that it is recycled in a manner that protects human health and the environment. For more information about where you can drop off your waste equipment for recycling, please contact your local city office, your household waste disposal service or where you purchased the product.

Additional Safety Precautions and Warnings

As the user of this product, you are solely responsible for operating it in a manner that does not endanger yourself and others or result in damage to the product or the property of others.

This model is controlled by a radio signal that is subject to interference from many sources outside your control. This interference can cause momentary loss of control so it is advisable to always keep a safe distance in all directions around your model, as this margin will help to avoid collisions or injury.

- Never operate your model with low transmitter batteries.
- Always operate your model in an open area away from cars, traffic, or people.
- Avoid operating your model in the street where injury or damage can occur.
- Never operate the model out into the street or populated areas for any reason.
- Carefully follow the directions and warnings for this and any optional support equipment (chargers, rechargeable battery packs, etc.) which you use.
- Keep all chemicals, small parts and anything electrical out of the reach of children.
- Moisture causes damage to electronics. Avoid water exposure to all equipment not specifically designed and protected for this purpose.
- Never lick or place any portion of your model in your mouth as it could cause serious injury or even death.

FCC INFORMATION

This device complies with part 15 of the FCC rules. Operation is subject to the following two conditions:

(1) This device may not cause harmful interference, and (2) this device must accept any interference received, including interference that may cause undesired operation.

NOTE: This equipment has been tested and found to comply with the limits for a Class B digital device, pursuant to part 15 of the FCC rules. These limits are designed to provide reasonable protection against harmful interference in a residential installation. This equipment generates, uses and can radiate radio frequency energy and, if not installed and used in accordance with the instructions, may cause harmful interference to radio communication. However, there is no guarantee that interference will not occur in a particular installation. If this equipment does cause harmful interference to radio or television reception, which can be determined by turning the equipment off and on, the user is encouraged to try to correct the interference by one or more of the following measures:

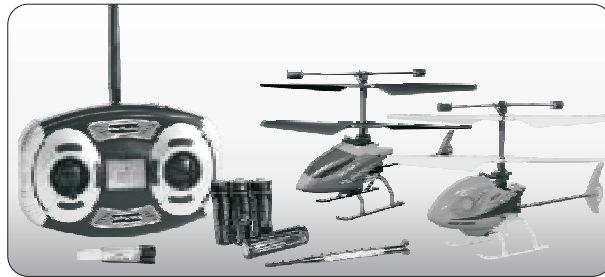
- 1) Reorient or relocate the receiving antenna.
- 2) Increase the separation between the equipment and receiver.
- 3) Connect the equipment into an outlet on a circuit different from that to which the receiver is connected.
- 4) Consult the dealer or an experienced radio/TV technician for help.

The associated regulatory agencies of the following countries recognize the noted certifications for this product as authorized for sale and use:

USA	Canada	Belgium
Denmark	France	Finland
Germany	Italy	Netherlands
Spain	Sweden	UK

PRODUCT LIST

Description	QTY
FREE SPIRIT MICRO/SOLO Air frame	1
2.4GHz TRANSMITTER	1
Li-Po Battery	1
AA Battery	4
Screwdriver	1

**Additional Equipment**

No additional equipment is required to complete your helicopter.

Flight Preparation

Please note this checklist is not intended to be a replacement for the content included in this instruction manual. Although it can be used as a quick start guide, we strongly suggest reading through this manual completely before proceeding.

1. Check whether the whole package complete
2. Install four(4) AA batteries into the transmitter
3. Use the transmitter to charge the helicopter
4. Put the Li-Po battery into frame
5. Test the function of transmitter
6. Familiar yourself with the function of transmitter
7. Choosing a suitable area for Flying

Li-Po Battery Warning and Guidelines

If you do not agree with these conditions, return your complete FREE SPIRIT MICRO/SOLO model in new, unused condition to the place of purchase immediately.

Operation Method

Please note this checklist is not intended to be a replacement for the content included in this instruction manual. Although it can be used as a quick start guide, we strongly suggest reading through this manual completely before proceeding.

- Always turn the transmitter on first
 - Plug the flight battery into the lead from the 5-in-1 control unit
 - Allow the 5-in-1 control unit to initialize and arm properly
 - Fly the model
 - Land the model
 - Unplug the flight battery from the 5-in-1 control unit
 - Always turn the transmitter off last
-
- You must charge the included 3.7V 110mAh Li-PO battery in a safe area away from flammable materials.
 - Never charge the battery unattended. When charging the battery you should always remain in constant observation to monitor the charging process and react to potential problems that may occur.
 - After flight, the battery must be cooled to ambient temperature before charging.
 - **You MUST use the included 3.7V DC Li-PO Charger ONLY. Failure to do so may result in a fire causing personal injury and/or property damage. DO NOT use a NiCd or NiMH charger.**