

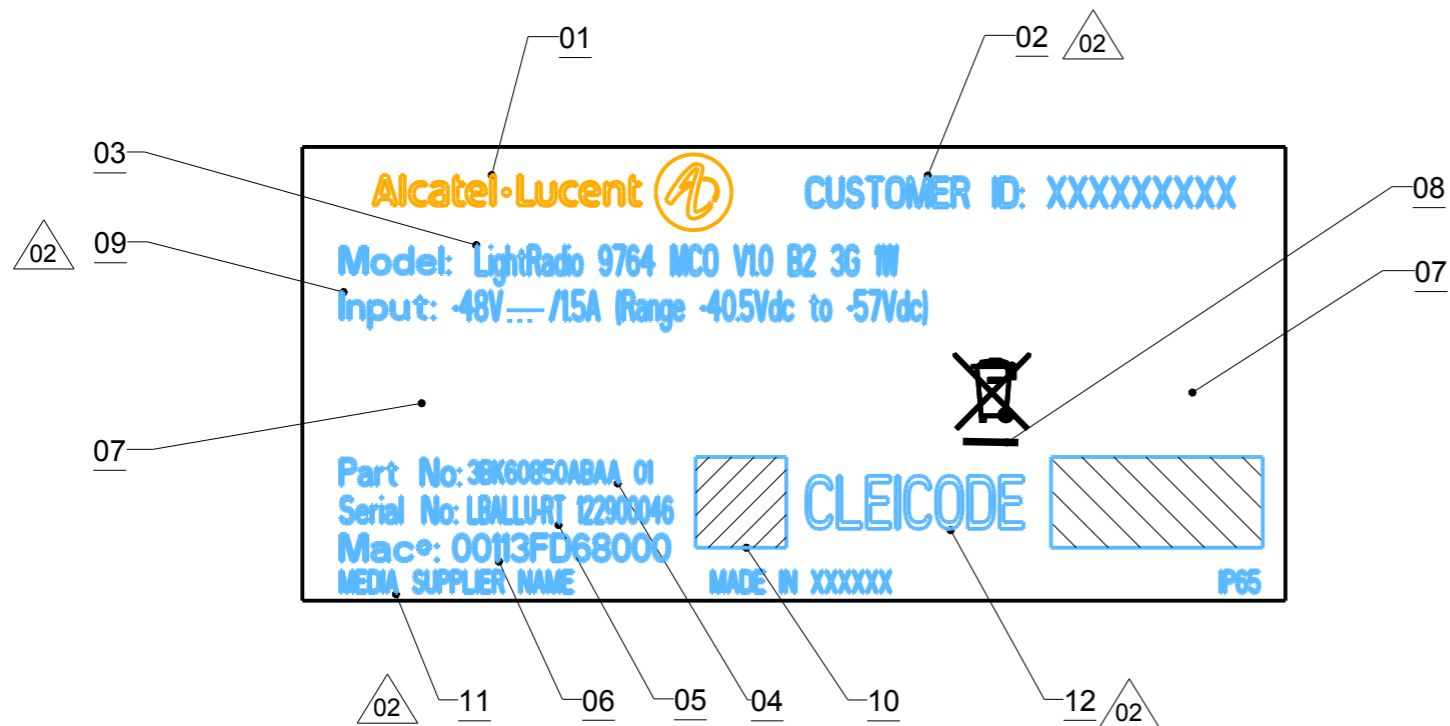
LightRadio 9764 MCO V1.0 B2 3G 1W
FCC ID: U3E9764MCOV1B23G
IC ID: 6933C-9764V1B2
- Label Area -



Label area on LightRadio 9764 MCO
V1.0 B2 3G 1W



LOGO AND NOTED ARE GIVEN AS AN EXAMPLE



* NOTE:

LABEL SUPPLIER MUST BE UL969 or GPAA

△02 FCC Id: U3E9764MCOV1B23G

△02 IC Id: 6933C-9764V1B2

△02 ADD LOGO CSA



SCALE 2/1

ITEM	DESCRIPTION
01	LOGO ALCATEL-LUCENT OR CUSTOMER LOGO - HEIGHT= 7.5
△02 02	AREA FOR INFORMATION NEEDED FOR CUSTOMER THE FACTORY MUST WRITE THE CUSTOMER ID CODE
03	NAME OF THE MODEL
04	PART NUMBER: 12 digits ALPHANUMERIC +2 FOR ICS
05	SERIAL NUMBER: 18 digits ALPHANUMERIC
06	MAC ADRESS: 12 digits ALPHANUMERIC
07	AREA FOR CERTIFICATIONS LOGOS - (SEE NOTE)
08	RECYCLING LOGO - HEIGHT= 5
△02 09	VOLTAGE RANGE/CURRENT RATING
10	DATA MATRIX-4 DOTS - PNICS;SN;MAC - 8.13 X 8.13
△02 11	MEDIA SUPPLIER NAME; MADE IN and IP65
△02 12	Cleicode:

Black printing on white label body
Material must be reliable for outdoor use
All dimensions are on millimeters.

Tolerance for marking position= ±0.5 mm
Text Type= Helvetica-Bold-Condensed

The UL94 Flamability class of the material used must be = or > Class 1

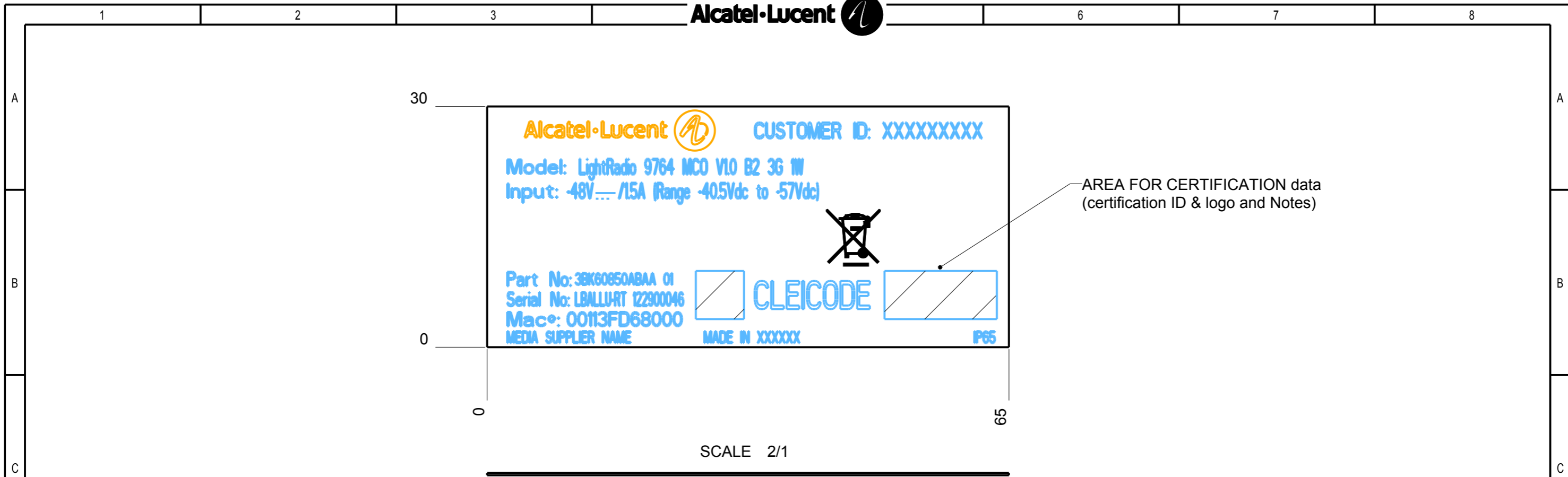
Product must comply with ALU Look&Feel
(Alcatel_Lucent_Common_Look_and_Feel_Standards.pdf)

Must comply with European directive 2002/95/EC
for the Restriction of the use of certain
Hazardous Substances in electrical equipment (RoHS)

△02 INDEX OF TRIANGLE - NAME OF LAST MODIFICATION

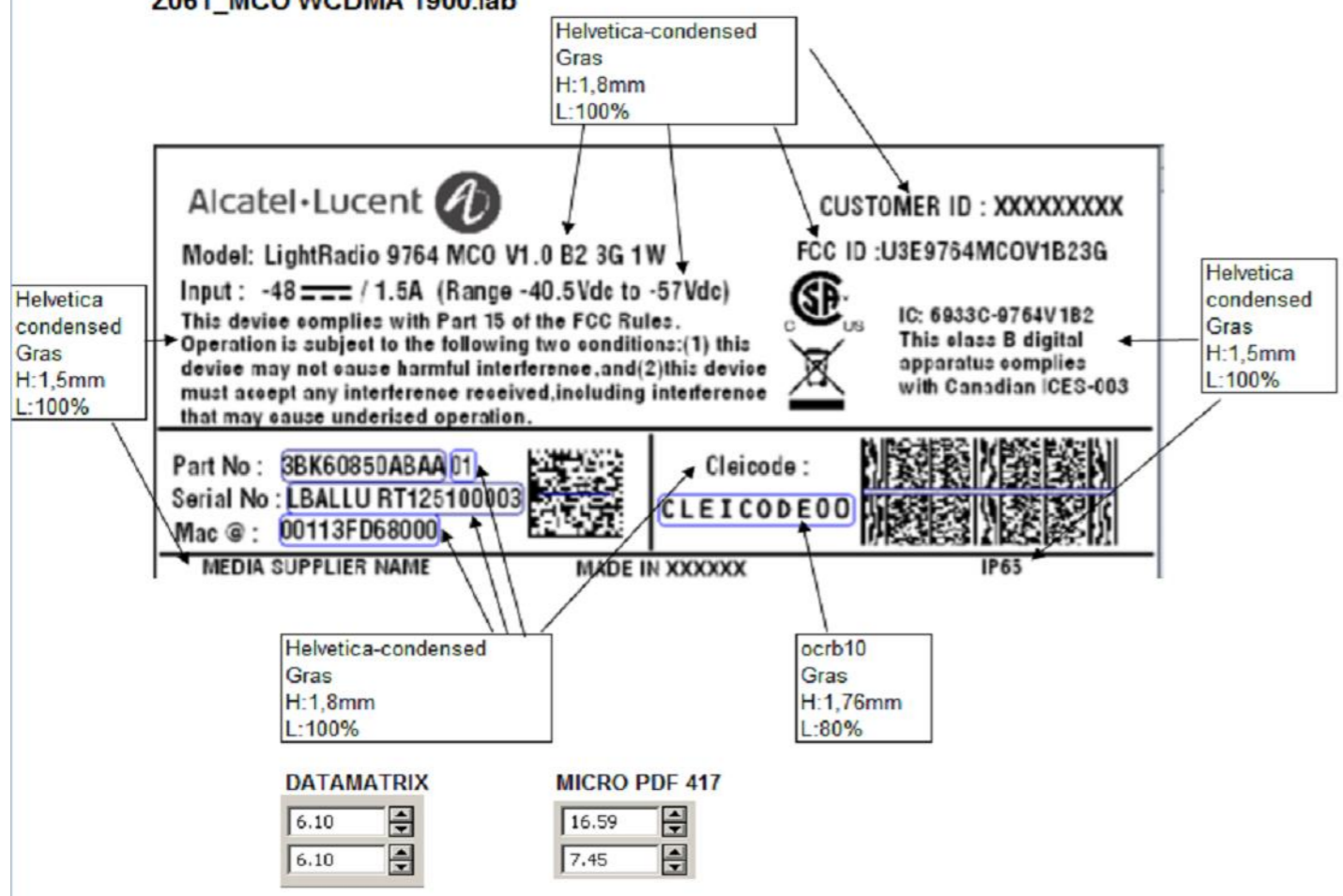
MAT: Ref: 1AD005740061		FIN:		GEN TOL: ±0.3	
				SCALE: 1/1	
ED	DATE	01	120730	02	121214
CHANGE NOTE		CREATION		ECO 73220	
APPRO. AUTHO.		C.FAURE		C.FAURE	
ORIGINATOR		S. MORIN		P.TORCHET	
				INFORMATION LABEL P2 MCO - WCDMA	
				3BK 60829 ABAA HDZZA 1/2	


All rights reserved. Passing on and copying of this document, use and communication of its contents not permitted without written authorization from Alcatel-Lucent



02 LABEL DEFINITION

Z061_MCO WCDMA 1900.lab



MAT: Ref: 1AD005740061		FIN:		GEN TOL: ±0.3	
				SCALE: 1/1 	
ED	DATE	01	120730	02	121214
CHANGE NOTE		CREATION		ECO 73220	
APPRO. AUTHO.		C.FAURE		C.FAURE	
ORIGINATOR		S. MORIN		P.TORCHET	
				INFORMATION LABEL P2 MCO - WCDMA	
				3BK60829ABAAHDZZA 2/2	