

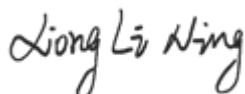
TEST REPORT

Applicant: Realtek Semiconductor Corp.
Address: No. 2, Innovation Road II, Hsinchu Science Park,
Hsinchu 300, Taiwan
Equipment Type: 11be RTL8922AE Combo module
Model Name: RTL8922AE
Brand Name: N/A
FCC ID: TX2-RTL8922AE
Test Standard: FCC 47 CFR Part 2.1093
(refer to section 3.1)
Maximum PD: 3.36 W/m²
Sample Arrival Date: Nov. 27, 2024
Test Date: Dec. 24, 2024
Date of Issue: Jan. 16, 2025

ISSUED BY:

Shenzhen BALUN Technology Co., Ltd.

Tested by: Xiong Lining



Checked by: Xu Rui



Approved by: Tolan Tu
(Testing Director)



Revision History		
Version	Issue Date	Revisions Content
<u>Rev. 01</u>	<u>Jan. 16, 2025</u>	<u>Initial Issue</u>

TABLE OF CONTENTS

1	GENERAL INFORMATION.....	4
1.1	Test Laboratory	4
1.2	Test Location	4
1.3	Test Environment Condition.....	4
2	PRODUCT INFORMATION	5
2.1	Applicant Information	5
2.2	Manufacturer Information.....	5
2.3	General Description for Equipment under Test (EUT).....	5
2.4	Ancillary Equipment.....	6
2.5	Technical Information	6
3	SUMMARY OF TEST RESULT	7
3.1	Test Standards	7
3.2	Device Category and SAR Limit	8
3.3	Test Result Summary	9
3.4	Test Uncertainty	10
4	MEASUREMENT SYSTEM	12
4.1	DASY Power Density System.....	12
5	SYSTEM VERIFICATION.....	17
5.1	Purpose of System Check	17
5.2	System Check Setup	17
6	POWER DENSITY MEASUREMENT PROCEDURE.....	18
6.1	Computation of the Electric Field Polarization Ellipse	18
6.2	Total Field and Power Flux Density Reconstruction.....	19
6.3	Power Flux Density Averaging.....	19

6.4	Measurement Workflow	19
7	CONDUCTED RF OUPUT POWER	20
7.1	WIFI.....	20
8	ANTENNA LOCATION	44
8.1	Antenna Location Sketch.....	44
9	TEST RESULT OF POWER DENSITY	46
9.1	WIFI 6GHz SAR	47
9.2	WIFI 6GHz PD.....	49
10	TEST EQUIPMENTS LIST	50
ANNEX A	SIMULATING LIQUID VERIFICATION RESULT	51
ANNEX B	POWER DENDITY TEST DATA.....	53
ANNEX C	EUT EXTERNAL PHOTOS.....	54
ANNEX D	POWER DENSITY TEST SETUP PHOTOS.....	54
ANNEX E	POWER DENSITY CALIBRATION REPORT	54

1 GENERAL INFORMATION

1.1 Test Laboratory

Name	Shenzhen BALUN Technology Co., Ltd.
Address	Block B, 1/F, Baisha Science and Technology Park, Shahe Xi Road, Nanshan District, Shenzhen, Guangdong Province, P. R. China
Phone Number	+86 755 6685 0100

1.2 Test Location

Name	Shenzhen BALUN Technology Co., Ltd.
Location	<input type="checkbox"/> Block B, 1/F, Baisha Science and Technology Park, Shahe Xi Road, Nanshan District, Shenzhen, Guangdong Province, P. R. China
	<input checked="" type="checkbox"/> 1/F, Building B, Ganghongji High-tech Intelligent Industrial Park, No. 1008, Songbai Road, Yangguang Community, Xili Sub-district, Nanshan District, Shenzhen, Guangdong Province, P. R. China
Accreditation Certificate	The laboratory is a testing organization accredited by FCC as a accredited testing laboratory. The designation number is CN1196.

1.3 Test Environment Condition

Ambient Temperature	18°C to 25°C
Ambient Relative Humidity	30% to 70%

2 PRODUCT INFORMATION

2.1 Applicant Information

Applicant	Realtek Semiconductor Corp.
Address	No. 2, Innovation Road II, Hsinchu Science Park, Hsinchu 300, Taiwan

2.2 Manufacturer Information

Manufacturer	Realtek Semiconductor Corp.
Address	No. 2, Innovation Road II, Hsinchu Science Park, Hsinchu 300, Taiwan

2.3 General Description for Equipment under Test (EUT)

EUT Name	11be RTL8922AE Combo module
Model Name Under Test	RTL8922AE
Series Model Name	N/A
Description of Model name differentiation	N/A
Hardware Version	N/A
Software Version	N/A
Dimensions (Approx.)	N/A
Weight (Approx.)	N/A

2.3.1 Host Information:

Product Name	Notebook Computer
Model Name	IdeaPad 5 2-in-1 16AKP10
Brand Name	Lenovo

2.3.2 Antenna Information:

Antenna Port	Model Name	Antenna Manufacturer	Antenna Type	Antenna Gain (dBi)									
				2.4 GHz	5.15-5.25 GHz	5.25-5.35 GHz	5.47-5.725 GHz	5.725-5.895 GHz	5.925-6.425 GHz	6.425-6.525 GHz	6.525-6.875 GHz	6.875-7.125 GHz	
Main Antenna	AYP6Y-100469	AWAN	PIFA	2.26	3.16	3.08	2.43	3.22	2.85	3.88	3.14	2.25	
Auxiliary Antenna	AYP6Y-100470		PIFA	2.16	3.41	3.33	2.89	3.82	3.38	3.40	3.40	3.53	
Main Antenna	3.N201.0263	South Star	PIFA	1.79	2.31	1.52	2.73	2.61	2.83	2.29	1.82	1.77	
Auxiliary Antenna	3.N201.0264		PIFA	1.69	1.87	2.28	2.82	3.18	2.86	3.18	2.21	2.97	

2.4 Ancillary Equipment

Note: Not applicable.

2.5 Technical Information

Network and Wireless connectivity	Bluetooth (BR+EDR+BLE) WIFI 802.11a, 802.11b, 802.11g, 802.11n, VHT, 802.11ac, 802.11ax and 802.11be
-----------------------------------	---

The requirement for the following technical information of the EUT was tested in this report:

Operating Mode	6G WLAN	
Frequency Range	802.11a	5925 ~ 6425 MHz
	802.11ax(HE20/HE40/HE80/HE160)	6425 ~ 6525 MHz
		6525 ~ 6875 MHz
	802.11be(EHT20/EHT40/EHT80/EHT160)	6875 ~ 7125 MHz
Antenna Type	WLAN	PIFA
Hotspot Function	N/A	
Exposure Category	General Population/Uncontrolled exposure	
Product Type	Portable Device	
EUT Type	<input checked="" type="checkbox"/> Production unit	<input type="checkbox"/> Identical prototype

3 SUMMARY OF TEST RESULT

3.1 Test Standards

No.	Identity	Document Title
1	47 CFR Part 2.1093	Radio frequency radiation exposure evaluation: portable devices
2	ANSI C95.1-1992	IEEE Standard for Safety Levels with Respect to Human Exposure to Radio Frequency Electromagnetic Fields, 3 kHz to 300 GHz
3	47 CFR Part 1.1310	Radiofrequency radiation exposure limits
4	KDB 447498 D04 v01	447498 D04 Interim General RF Exposure Guidance v01
5	KDB 865664 D02 v01r02	RF Exposure Reporting
6	KDB 248227 D01 v02r02	SAR Guidance for IEEE 802.11 (Wi-Fi) Transmitters
7	KDB 616217 D04 v01r02	SAR for laptop and tablets
8	IEC/IEEE 62209-1528:2020	Measurement procedure for the assessment of specific absorption rate of human exposure to radio frequency fields from hand-held and body-mounted wireless communication devices – Part 1528: Human models, instrumentation, and procedures (Frequency range of 4 MHz to 10 GHz)
9	IEC/IEEE 63195-1:2022	Assessment of power density of human exposure to radio frequency fields from wireless devices in close proximity to the head and body (frequency range of 6 GHz to 300 GHz)-Part 1: Measurement procedure
10	IEC TR 63170:2018	Measurement procedure for the evaluation of power density related to human exposure to radio frequency fields from wireless communication devices operating between 6 GHz and 100 GHz

3.2 Device Category and SAR Limit

This device belongs to portable device category because its radiating structure is allowed to be used within 20 centimeters of the body of the user.

Limit for General Population/Uncontrolled exposure should be applied for this device, it is power density for frequencies between 1.5GHz and 100 GHz is $1.0 \text{ mW/cm}^2 = 10 \text{ W/m}^2$

Table of Exposure Limits:

Frequency range (MHz)	Electric field strength (V/m)	Magnetic field strength (A/m)	Power density (mW / cm ²)	Averaging time (minutes)
(A) Limits for Occupational/Controlled Exposure				
0.3-3.0	614	1.63	*100	6
3.0-30	1842/f	4.89/f	*900/f ²	6
30-300	61.4	0.163	1.0	6
300-1,500	/	/	f/300	6
1,500-100,000	/	/	5	6
(B) Limits for General Population/Uncontrolled Exposure				
0.3-1.34	614	1.63	*100	30
1.34-30	824/f	2.19/f	*180/f ²	30
30-300	27.5	0.073	0.2	30
300-1,500	/	/	f/1500	30
1,500-100,000	/	/	1.0	30
<i>f = frequency in MHz * = Plane-wave equivalent power density</i>				

NOTE:

General Population/Uncontrolled Exposure: Locations where there is the exposure of individuals who have no knowledge or control of their exposure. General population/uncontrolled exposure limits are applicable to situations in which the general public may be exposed or in which persons who are exposed as a consequence of their employment may not be made fully aware of the potential for exposure or cannot exercise control over their exposure. Members of the general public would come under this category when exposure is not employment-related; for example, in the case of a wireless transmitter that exposes persons in its vicinity.

Occupational/Controlled Exposure: Locations where there is exposure that may be incurred by persons who are aware of the potential for exposure, In general, occupational/controlled exposure limits are applicable to situations in which persons are exposed as a consequence of their employment, who have been made fully aware of the potential for exposure and can exercise control over their exposure. This exposure category is also applicable when the exposure is of a transient nature due to incidental passage through a location where the exposure levels may be higher than the general population/uncontrolled limits, but the exposed person is fully aware of the potential for exposure and can exercise control over his or her exposure by leaving the area or by some other appropriate means.

3.3 Test Result Summary

3.3.1 Highest Power Density

Equipment Class	Band	Antenna	Maximum Scaled PD (W/m ²)	Maximum Report PD (W/m ²)
			Body	Body
U-NII-5/6/7/8	6G WIFI	Aux.	2.20	3.36
		Main	3.36	
Limit (W/m ²)			10.00	
Verdict			Pass	

3.4 Test Uncertainty

For PTP measurement method: DASY8 uncertainty budget in compliance with IEC/IEEE 63195-1 for the cases indicated in the reference table.

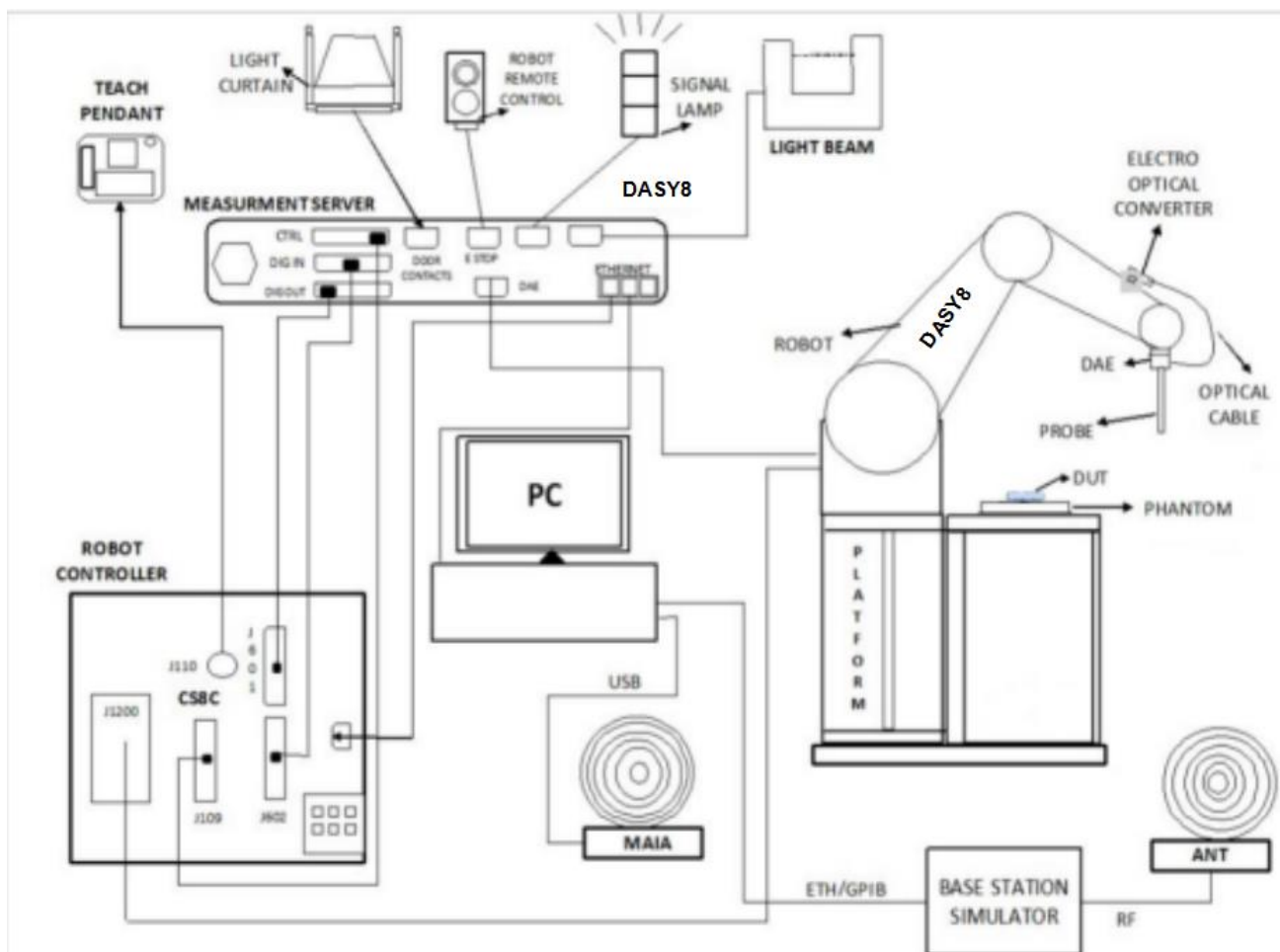
DASY8 Uncertainty Budget for PD (avg ≥ 1 cm²) Evaluation Distances to the Antennas $\geq \lambda/5$ in Compliance with IEC/IEEE 63195							
Error Description	Unc. Value (\pm dB)	Probab. Distri.	Div.	(c)	Std. Unc. (\pm dB)	(vi) veff	
Uncertainty terms dependent on the measurement system							
CAL	Calibration	0.49	N	1	1	0.49	∞
COR	Probe correction	0	R	1.732	1	0	∞
FRS	Frequency response (BW ≤ 1 GHz)	0.2	R	1.732	1	0.12	∞
SCC	Sensor cross coupling	0	R	1.732	1	0	∞
ISO	Isotropy	0.5	R	1.732	1	0.29	∞
LIN	Linearity	0.2	R	1.732	1	0.12	∞
PSC	Probe scattering	0	R	1.732	1	0	∞
PPO	Probe positioning offset	0.3	R	1.732	1	0.17	∞
PPR	Probe positioning repeatability	0.04	R	1.732	1	0.02	∞
SMO	Sensor mechanical offset	0	R	1.732	1	0	∞
PSR	Probe spatial resolution	0	R	1.732	1	0	∞
FLD	Field impedance dependence	0	R	1.732	1	0	∞
APD	Amplitude and phase drift	0	R	1.732	1	0	∞
APN	Amplitude and phase noise	0.04	R	1.732	1	0.02	∞
TR	Measurement area truncation	0	R	1.732	1	0	∞
DAQ	Data acquisition	0.03	N	1	1	0.03	∞
SMP	Sampling	0	R	1.732	1	0	∞
REC	Field reconstruction	0.6	R	1.732	1	0.35	∞
TRA	FTE/MEO	0 (0.7)	R	1.732	1	0 (0.4)	∞
SCA	Power density scaling	–	R	1.732	1	–	∞
SAV	Spatial averaging	0.1	R	1.732	1	0.06	∞
SDL	System detection limit	0.04	R	1.732	1	0.02	∞
Uncertainty terms dependent on the DUT and environmental factors							
PC	Probe coupling with DUT	0	R	1.732	1	0	∞
MOD	Modulation response	0.4	R	1.732	1	0.23	∞
IT	Integration time	0	R	1.732	1	0	∞
RT	Response time	0	R	1.732	1	0	∞
DH	Device holder influence	0.14	R	1.732	1	0.08	∞
DA	DUT alignment	0	R	1.732	1	0	∞
AC	RF ambient conditions	0.04	R	1.732	1	0.02	∞
AR	Ambient reflections	0.04	R	1.732	1	0.02	∞
MSI	Immunity / secondary reception	0	R	1.732	1	0	∞
DRI	Drift of the DUT	–	R	1.732	1	–	∞

Combined Std Uncertainty (w/ FTE/MEO)	–	–	–	0.75	∞
Expanded Std Uncertainty (w/ FTE/MEO)	–	–	–	1.50 (1.71)	–

4 MEASUREMENT SYSTEM

4.1 DASY Power Density System

4.1.1 DASY PD System Diagram



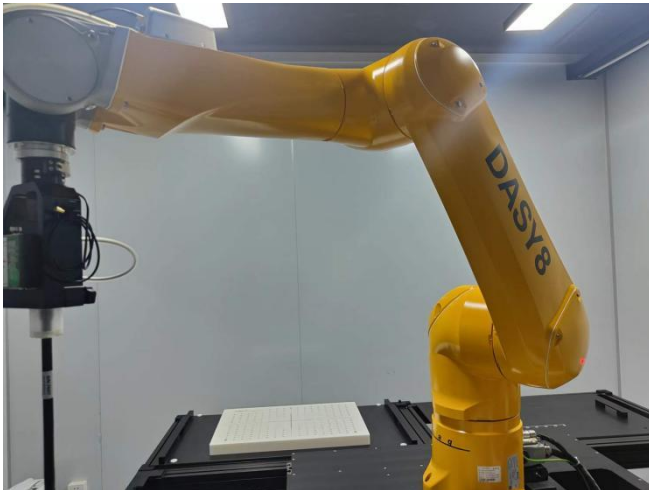
The DASY system for performing compliance tests consists of the following items:

1. A standard high precision 6-axis robot (Stäubli RX family) with controller and software. An arm extension for accommodating the data acquisition electronics (DAE).
2. A dosimetric probe, i.e. an isotropic E-field probe optimized and calibrated for usage in tissue simulating liquid. The probe is equipped with an optical surface detector system.
3. A data acquisition electronic (DAE) which performs the signal amplification, signal multiplexing, AD-conversion, offset measurements, mechanical surface detection, collision detection, etc. The unit is battery powered with standard or rechargeable batteries. The signal is optically transmitted to the EOC.
4. A unit to operate the optical surface detector which is connected to the EOC.
5. The Electro-Optical Coupler (EOC) performs the conversion from the optical into a digital electric signal of the DAE. The EOC is connected to the DASY measurement server.
6. The DASY measurement server, which performs all real-time data evaluation for field measurements and surface detection, controls robot movements and handles safety operation.

7. DASY software and SEMCAD data evaluation software.
8. Remote control with teach panel and additional circuitry for robot safety such as warning lamps, etc.
9. The generic twin phantom enabling the testing of left-hand and right-hand usage.
10. The device holder for handheld mobile phones.
11. Tissue simulating liquid mixed according to the given recipes.
12. System validation dipoles allowing to validate the proper functioning of the system.

4.1.2 Robot


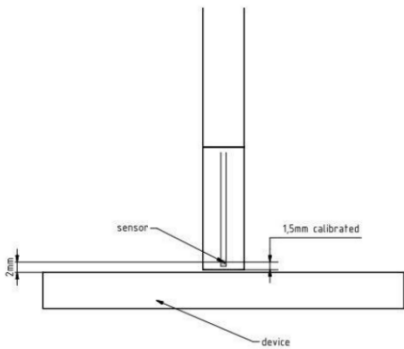
The Dasy SAR system uses the high precision robots. Symmetrical design with triangular core Built-in optical fiber for surface detection system For the 6-axis controller system, Built-in shielding against static charges PEEK enclosure material (resistant to organic solvents). The robot series have many features that are important for our application:



- **High precision**
(repeatability ± 0.02 mm)
- **High reliability**
(industrial design)
- **Low maintenance costs**
(virtually maintenance free due to direct drive gears; no belt drives)
- **Jerk-free straight movements**
(brush less synchron motors; no stepper motors)
- **Low ELF interference**
(motor control _elds shielded via the closed metallic construction shields)

4.1.3 EUmmWave Probe / E-Field 5G Probe

The EUmmWave3 probe design allows measurements at distances as small as 2mm

Frequency	750 MHz – 110 GHz
Probe Overall Length	320 mm
Probe Body Diameter	8.0 mm
Tip Length	23.0 mm
Tip Diameter	8.0 mm
Probe's two dipoles length	0.9 mm – Diode loaded
Dynamic Range	< 20 V/m – 10000 V/m with PRE-10 (min < 50 V/m – 3000 V/m)
Position Precision	< 0.2 mm
Distance between diode sensors and probe's tip	1.5 mm
Minimum Mechanical separation between probe tip and a Surface	0.5 mm
Applications	E-field measurements of 5G devices and other mm-wave transmitters operating above 10GHz in < 2 mm distance from device (free-space) Power density, H-field and far-field analysis using total field reconstruction.
Compatibility	cDASY6 + 5G-Module SW1.0 and higher
	

4.1.4 Data Acquisition Electronics

The data acquisition electronics (DAE) consist of a highly sensitive electrometer-grade preamplifier with auto-zeroing, a channel and gain-switching multiplexer, a fast 16 bit AD-converte and a command decoder with a control logic unit. Transmission to the measurement server is accomplished through an optical downlink for data and status information, as well as an optical uplink for commands and the clock.



- Input Impedance: 200M Ω
- The Inputs: Symmetrical and Floating
- Commom Mode Rejection: Above 80dB

5 SYSTEM VERIFICATION

5.1 Purpose of System Check

The system performance check verifies that the system operates within its specifications. System and operator errors can be detected and corrected. It is recommended that the system performance check be performed prior to any usage of the system in order to guarantee reproducible results. The system performance check uses normal Power Density measurements in a simplified setup with a well characterized source. This setup was selected to give a high sensitivity to all parameters that might fail or vary over time. The system check does not intend to replace the calibration of the components, but indicates situations where the system uncertainty is exceeded due to drift or failure.

5.2 System Check Setup

The system was verified to be within ± 0.66 dB of the power density targets on the calibration certificate according to the test system specification in the user's manual and calibration facility recommendation. The 0.66 dB deviation threshold represents the expanded uncertainty for system performance checks using SPEAG's mmWave verification sources. The same spatial resolution and measurement region used in the source calibration was applied during the system check.

The measured power density distribution of verification source was also confirmed through visual inspection to have no noticeable differences, both spatially (shape) and numerically (level) from the distribution provided by the manufacturer, per November 2017 TCBC Workshop Notes.

6 POWER DENSITY MEASUREMENT PROCEDURE

6.1 Computation of the Electric Field Polarization Ellipse

For the numerical description of an arbitrarily oriented ellipse in three-dimensional space, five parameters are needed: the semi-major axis (a), the semi-minor axis (b), two angles describing the orientation of the normal vector of the ellipse (ϕ , θ), and one angle describing the tilt of the semi-major axis (ψ). For the two extreme cases, i.e. circular and linear polarizations, three parameters only (a , ϕ and θ) are sufficient for the description of the incident field.

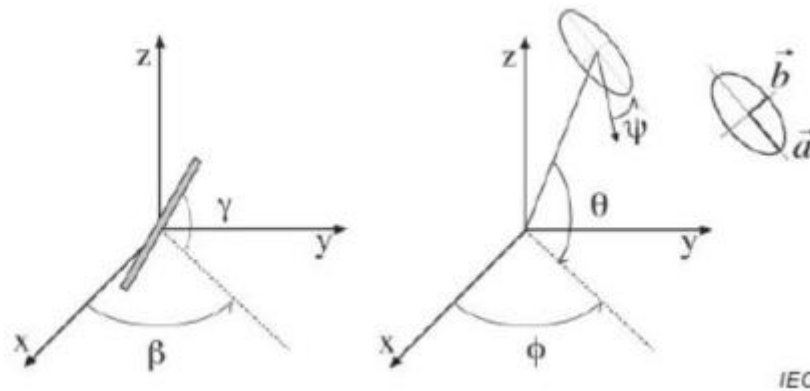


Illustration of the angles used for the numerical description of the sensor and the orientation of an ellipse in 3-D space

For the construction of the ellipse parameters from measured data, the problem can be reformulated as a nonlinear search problem. The semi-major and semi-minor axes of an elliptical field can be expressed as functions of the three angles (ϕ , θ and ψ). The parameters can be uniquely determined towards minimizing the error based on least-squares for the given set of angles and the measured data. In this way, the number of three parameters is reduced from five to three, which means that at least three sensor readings are necessary to gain sufficient information for the reconstruction of ellipse parameters.

However, to suppress the noise and increase the reconstruction accuracy, it is desirable to have an overdetermined system of equations. The solution to use a probe consisting of two sensors angled by γ_1 and γ_2 toward the probe axis and to perform measurements at three angular positions of the probe, i.e. at β_1 , β_2 and β_3 , results in overdetermination of two. If there is a need for more information or increased accuracy, more rotation angles can be added.

The reconstruction of ellipse parameters can be separated into linear and non-linear parts that are best solved by the given algorithm combined with a downhill simplex algorithm. To minimize the mutual coupling, sensor angles are set with a 90° shift ($\gamma_1 = \gamma_2 + 90^\circ$), and, to simplify, the first rotation angle of the probe (β_1) can be set to 0° .

6.2 Total Field and Power Flux Density Reconstruction

Computation of the power density in general requires knowledge of the electric and magnetic field amplitudes and phases in the plane of incidence. Reconstruction of these quantities from pseudo-vector E-field measurements is feasible, as they are constrained by Maxwell's equations. The SPEAG have developed a reconstruction approach based on the Gerchberg-Saxton algorithm, which benefits from the availability of the E-Field polarization ellipse information obtained with the EUMMW2 probe. This reconstruction algorithm, together with the ability of the probe to measure extremely close to the source without perturbing the field, permits reconstruction of the E-field and H-field, as well as of the power density, on measurement planes located as near as $\lambda/5$ away.

6.3 Power Flux Density Averaging

The average of the reconstructed power density is evaluated over a circular area in each measurement plane. The area of the circle is defined by the user; the default is 1cm². The computed peak average value

is displayed in the box at the top right. Note that the average is evaluated only for grid points where the averaging circle is completely filled with values; for points at the edge where the averaging circle is only partly filled with values, the average power density is set to zero. Two average power density values are computed.

6.4 Measurement Workflow

The incident power density must be measured for the test configuration producing the highest SAR value. The

measurement procedure is summarized below:

1. Perform a system performance check at 10 GHz.
2. Determine the optimal grid resolution to be used for subsequent measurements.
3. Assess the incident power for the configuration to be tested.
4. Calculate the additional reconstruction uncertainty at 2mm and compute the total measurement uncertainty.
5. Adjust the incident psPD results by the amount that the measurement uncertainty exceeds 30%

7 CONDUCTED RF OUPUT POWER

7.1 WIFI

7.1.1 6G WIFI (Aux. Antenna) (Laptop Mode)

Band (GHz)	Mode	Channel	Freq. (MHz)	Conducted Power (dBm)	Tune-up Limit (dBm)	SAR Test Require.
6	802.11a	1	5955	6.39	7.00	No
		49	6195	6.20	7.00	No
		93	6415	6.33	7.00	No
		97	6435	6.85	7.00	No
		105	6475	6.48	7.00	No
		113	6515	6.16	7.00	No
		117	6535	6.52	7.00	No
		149	6695	6.70	7.00	No
		181	6855	6.21	7.00	No
		185	6875	6.39	7.00	No
		189	6895	6.81	7.00	No
		209	6995	6.22	7.00	No
		229	7095	6.47	7.00	No
		233	7115	6.76	7.00	No
	802.11ax(HE20) (SU)	1	5955	6.71	7.00	No
		49	6195	6.57	7.00	No
		93	6415	6.34	7.00	No
		97	6435	6.83	7.00	No
		105	6475	6.54	7.00	No
		113	6515	6.76	7.00	No
		117	6535	6.39	7.00	No
		149	6695	6.45	7.00	No
		181	6855	6.48	7.00	No
		185	6875	6.54	7.00	No
		209	6995	6.83	7.00	No
		233	7115	6.33	7.00	No
	802.11ax(HE40) (SU)	3	5965	9.20	10.00	No
		51	6205	9.78	10.00	No
		91	6405	9.83	10.00	No
		99	6445	9.07	10.00	No
		107	6485	9.39	10.00	No
		115	6525	9.70	10.00	No
		123	6565	9.26	10.00	No
147		6685	9.62	10.00	No	
179	6845	9.82	10.00	No		

		187	6885	9.12	10.00	No
		195	6925	9.08	10.00	No
		211	7005	9.48	10.00	No
		227	7085	9.13	10.00	No
	802.11ax(HE80) (SU)	7	5985	12.22	13.00	No
		55	6225	12.70	13.00	No
		87	6385	12.33	13.00	No
		103	6465	12.46	13.00	No
		119	6545	12.32	13.00	No
		135	6625	12.06	13.00	No
		151	6705	12.10	13.00	No
		167	6785	12.38	13.00	No
		183	6865	12.85	13.00	No
		199	6945	12.84	13.00	No
		215	7025	12.30	13.00	No
		802.11ax(HE160) (SU)	15	6025	12.70	13.00
	47		6185	12.67	13.00	Yes
	79		6345	12.56	13.00	Yes
	111		6505	12.90	13.00	Yes
	143		6665	12.78	13.00	Yes
	175		6825	12.90	13.00	Yes
	207		6985	12.75	13.00	Yes
	802.11be(EHT20) (SU)	1	5955	6.29	7.00	No
		49	6195	6.41	7.00	No
		93	6415	6.84	7.00	No
		97	6435	6.54	7.00	No
		105	6475	6.48	7.00	No
		113	6515	6.20	7.00	No
		117	6535	6.10	7.00	No
		149	6695	6.85	7.00	No
		181	6855	6.30	7.00	No
		185	6875	6.44	7.00	No
		209	6995	6.55	7.00	No
		233	7115	6.25	7.00	No
	802.11be(EHT40) (SU)	3	5965	9.13	10.00	No
		51	6205	9.17	10.00	No
		91	6405	9.52	10.00	No
		99	6445	9.78	10.00	No
		107	6485	9.83	10.00	No
		115	6525	9.70	10.00	No
123		6565	9.69	10.00	No	
147		6685	9.46	10.00	No	
179		6845	9.12	10.00	No	

		187	6885	9.55	10.00	No
		195	6925	9.38	10.00	No
		211	7005	9.53	10.00	No
		227	7085	9.14	10.00	No
	802.11be(EHT80) (SU)	7	5985	12.12	13.00	No
		55	6225	12.48	13.00	No
		87	6385	12.44	13.00	No
		103	6465	12.48	13.00	No
		119	6545	12.22	13.00	No
		135	6625	12.75	13.00	No
		151	6705	12.80	13.00	No
		167	6785	12.75	13.00	No
		183	6865	12.24	13.00	No
		199	6945	12.64	13.00	No
		215	7025	12.46	13.00	No
	802.11be(EHT160) (SU)	15	6025	12.54	13.00	No
		47	6185	12.66	13.00	No
		79	6345	12.20	13.00	No
		111	6505	12.81	13.00	No
		143	6665	12.84	13.00	No
		175	6825	12.81	13.00	No
		207	6985	12.09	13.00	No
	802.11be(EHT20) (RU26)	1	5955	-1.75	-1.00	No
		49	6195	-1.28	-1.00	No
		93	6415	-1.22	-1.00	No
		97	6435	-1.83	-1.00	No
		105	6475	-1.39	-1.00	No
		113	6515	-1.41	-1.00	No
		117	6535	-1.44	-1.00	No
		149	6695	-1.51	-1.00	No
		181	6855	-1.38	-1.00	No
		185	6875	-1.20	-1.00	No
		209	6995	-1.57	-1.00	No
	802.11be(EHT20) (RU52)	233	7115	-1.51	-1.00	No
		1	5955	0.94	1.50	No
		49	6195	0.71	1.50	No
93		6415	0.90	1.50	No	
97		6435	0.76	1.50	No	
105		6475	1.22	1.50	No	
113		6515	1.07	1.50	No	
117		6535	0.98	1.50	No	
149		6695	0.97	1.50	No	
181	6855	0.75	1.50	No		

		185	6875	1.29	1.50	No
		209	6995	1.27	1.50	No
		233	7115	0.60	1.50	No
	802.11be(EHT20) (RU106)	1	5955	3.06	4.00	No
		49	6195	3.10	4.00	No
		93	6415	3.25	4.00	No
		97	6435	3.09	4.00	No
		105	6475	3.18	4.00	No
		113	6515	3.67	4.00	No
		117	6535	3.37	4.00	No
		149	6695	3.43	4.00	No
		181	6855	3.74	4.00	No
		185	6875	3.23	4.00	No
		209	6995	3.43	4.00	No
		233	7115	3.65	4.00	No

Note: When multiple channel bandwidth configurations in a frequency band have the same maximum tune-up output power, the test configuration is determined by applying the following steps sequentially.

- 1) The largest channel bandwidth configuration is selected between the multiple configurations in a frequency band with the same maximum tune-up output power.

7.1.2 6G WIFI (Main Antenna) (Laptop Mode)

Band (GHz)	Mode	Channel	Freq. (MHz)	Conducted Power (dBm)	Tune-up Limit (dBm)	SAR Test Require.
6	802.11a	1	5955	6.21	7.00	No
		49	6195	6.41	7.00	No
		93	6415	6.42	7.00	No
		97	6435	6.15	7.00	No
		105	6475	6.27	7.00	No
		113	6515	6.29	7.00	No
		117	6535	6.51	7.00	No
		149	6695	6.15	7.00	No
		181	6855	6.37	7.00	No
		185	6875	6.38	7.00	No
		189	6895	6.52	7.00	No
		209	6995	6.18	7.00	No
		229	7095	6.51	7.00	No
		233	7115	6.21	7.00	No
	802.11ax(HE20) (SU)	1	5955	6.14	7.00	No
		49	6195	6.19	7.00	No
		93	6415	6.05	7.00	No
		97	6435	6.31	7.00	No
		105	6475	6.13	7.00	No
		113	6515	6.21	7.00	No
		117	6535	6.31	7.00	No
		149	6695	6.15	7.00	No
		181	6855	6.52	7.00	No
		185	6875	6.31	7.00	No
		209	6995	6.81	7.00	No
		233	7115	6.68	7.00	No
	802.11ax(HE40) (SU)	3	5965	9.50	10.00	No
		51	6205	9.24	10.00	No
		91	6405	9.71	10.00	No
		99	6445	9.80	10.00	No
		107	6485	9.53	10.00	No
		115	6525	9.26	10.00	No
		123	6565	9.34	10.00	No
		147	6685	9.25	10.00	No
		179	6845	9.14	10.00	No
		187	6885	9.72	10.00	No
195		6925	9.24	10.00	No	
211		7005	9.74	10.00	No	
227	7085	9.56	10.00	No		

	802.11ax(HE80) (SU)	7	5985	12.44	13.00	No
		55	6225	12.28	13.00	No
		87	6385	12.44	13.00	No
		103	6465	12.23	13.00	No
		119	6545	12.63	13.00	No
		135	6625	12.52	13.00	No
		151	6705	12.15	13.00	No
		167	6785	12.69	13.00	No
		183	6865	12.25	13.00	No
		199	6945	12.54	13.00	No
		215	7025	12.34	13.00	No
	802.11ax(HE160) (SU)	15	6025	12.75	13.00	Yes
		47	6185	12.62	13.00	Yes
		79	6345	12.94	13.00	Yes
		111	6505	12.61	13.00	Yes
		143	6665	12.81	13.00	Yes
		175	6825	12.80	13.00	Yes
		207	6985	12.57	13.00	Yes
	802.11be(EHT20) (SU)	1	5955	6.24	7.00	No
		49	6195	6.29	7.00	No
		93	6415	6.23	7.00	No
		97	6435	6.56	7.00	No
		105	6475	6.13	7.00	No
		113	6515	6.30	7.00	No
		117	6535	6.56	7.00	No
		149	6695	6.58	7.00	No
		181	6855	6.50	7.00	No
		185	6875	6.70	7.00	No
		209	6995	6.83	7.00	No
		233	7115	6.31	7.00	No
	802.11be(EHT40) (SU)	3	5965	9.27	10.00	No
		51	6205	9.61	10.00	No
		91	6405	9.70	10.00	No
		99	6445	9.50	10.00	No
		107	6485	9.41	10.00	No
		115	6525	9.45	10.00	No
		123	6565	9.77	10.00	No
		147	6685	9.36	10.00	No
		179	6845	9.24	10.00	No
		187	6885	9.27	10.00	No
		195	6925	9.76	10.00	No
		211	7005	9.21	10.00	No
227		7085	9.21	10.00	No	

	802.11be(EHT80) (SU)	7	5985	12.05	13.00	No
		55	6225	12.61	13.00	No
		87	6385	12.62	13.00	No
		103	6465	12.12	13.00	No
		119	6545	12.30	13.00	No
		135	6625	12.61	13.00	No
		151	6705	12.53	13.00	No
		167	6785	12.62	13.00	No
		183	6865	12.15	13.00	No
		199	6945	12.60	13.00	No
		215	7025	12.41	13.00	No
	802.11be(EHT160) (SU)	15	6025	12.61	13.00	No
		47	6185	12.63	13.00	No
		79	6345	12.81	13.00	No
		111	6505	12.71	13.00	No
		143	6665	12.48	13.00	No
		175	6825	12.50	13.00	No
		207	6985	12.14	13.00	No
	802.11be(EHT20) (RU26)	1	5955	-1.63	-1.00	No
		49	6195	-1.82	-1.00	No
		93	6415	-1.84	-1.00	No
		97	6435	-1.56	-1.00	No
		105	6475	-1.32	-1.00	No
		113	6515	-1.77	-1.00	No
		117	6535	-1.33	-1.00	No
		149	6695	-1.36	-1.00	No
		181	6855	-1.49	-1.00	No
		185	6875	-1.39	-1.00	No
		209	6995	-1.94	-1.00	No
		233	7115	-1.94	-1.00	No
	802.11be(EHT20) (RU52)	1	5955	1.15	1.50	No
		49	6195	0.86	1.50	No
		93	6415	1.00	1.50	No
		97	6435	0.62	1.50	No
		105	6475	0.77	1.50	No
		113	6515	0.81	1.50	No
		117	6535	1.21	1.50	No
		149	6695	0.96	1.50	No
		181	6855	0.91	1.50	No
		185	6875	0.90	1.50	No
		209	6995	1.10	1.50	No
		233	7115	1.23	1.50	No
802.11be(EHT20)	1	5955	3.79	4.00	No	

	(RU106)	49	6195	3.83	4.00	No
		93	6415	3.19	4.00	No
		97	6435	3.22	4.00	No
		105	6475	3.23	4.00	No
		113	6515	3.65	4.00	No
		117	6535	3.30	4.00	No
		149	6695	3.57	4.00	No
		181	6855	3.42	4.00	No
		185	6875	3.73	4.00	No
		209	6995	3.77	4.00	No
		233	7115	3.14	4.00	No

Note: When multiple channel bandwidth configurations in a frequency band have the same maximum tune-up output power, the test configuration is determined by applying the following steps sequentially.

- 1) The largest channel bandwidth configuration is selected between the multiple configurations in a frequency band with the same maximum tune-up output power.

7.1.3 6G WIFI (MIMO) (Laptop Mode)

Band (GHz)	Mode	Channel	Freq. (MHz)	Conducted Power (dBm)	Tune-up Limit (dBm)	SAR Test Require.
6	802.11a	1	5955	9.49	10.00	No
		49	6195	9.51	10.00	No
		93	6415	9.11	10.00	No
		97	6435	8.91	10.00	No
		105	6475	9.02	10.00	No
		113	6515	9.10	10.00	No
		117	6535	9.49	10.00	No
		149	6695	9.13	10.00	No
		181	6855	9.50	10.00	No
		185	6875	9.47	10.00	No
		189	6895	8.88	10.00	No
		209	6995	9.06	10.00	No
		229	7095	9.34	10.00	No
		233	7115	8.95	10.00	No
	802.11ax(HE20) (SU)	1	5955	9.26	10.00	No
		49	6195	9.23	10.00	No
		93	6415	8.78	10.00	No
		97	6435	9.28	10.00	No
		105	6475	8.95	10.00	No
		113	6515	9.51	10.00	No
		117	6535	8.87	10.00	No
		149	6695	9.38	10.00	No
		181	6855	8.92	10.00	No
		185	6875	8.80	10.00	No
		209	6995	9.55	10.00	No
		233	7115	8.89	10.00	No
	802.11ax(HE40) (SU)	3	5965	11.79	13.00	No
		51	6205	11.95	13.00	No
		91	6405	12.28	13.00	No
		99	6445	12.08	13.00	No
		107	6485	12.34	13.00	No
		115	6525	12.34	13.00	No
		123	6565	12.15	13.00	No
		147	6685	12.21	13.00	No
		179	6845	12.13	13.00	No
		187	6885	12.39	13.00	No
195		6925	12.48	13.00	No	
211		7005	12.21	13.00	No	
227	7085	12.23	13.00	No		

	802.11ax(HE80) (SU)	7	5985	14.82	16.00	No
		55	6225	14.99	16.00	No
		87	6385	14.81	16.00	No
		103	6465	15.12	16.00	No
		119	6545	15.06	16.00	No
		135	6625	15.06	16.00	No
		151	6705	15.29	16.00	No
		167	6785	15.51	16.00	No
		183	6865	14.83	16.00	No
		199	6945	15.12	16.00	No
		215	7025	14.97	16.00	No
	802.11ax(HE160) (SU)	15	6025	15.09	16.00	No
		47	6185	14.89	16.00	No
		79	6345	15.13	16.00	No
		111	6505	15.02	16.00	No
		143	6665	15.12	16.00	No
		175	6825	14.95	16.00	No
		207	6985	14.87	16.00	No
	802.11be(EHT20) (SU)	1	5955	8.81	10.00	No
		49	6195	8.77	10.00	No
		93	6415	9.30	10.00	No
		97	6435	9.31	10.00	No
		105	6475	9.09	10.00	No
		113	6515	9.54	10.00	No
		117	6535	8.76	10.00	No
		149	6695	9.15	10.00	No
		181	6855	9.34	10.00	No
		185	6875	9.00	10.00	No
		209	6995	9.18	10.00	No
		233	7115	9.30	10.00	No
	802.11be(EHT40) (SU)	3	5965	11.93	13.00	No
		51	6205	11.97	13.00	No
		91	6405	12.33	13.00	No
		99	6445	12.04	13.00	No
		107	6485	12.55	13.00	No
		115	6525	12.17	13.00	No
		123	6565	11.94	13.00	No
		147	6685	12.22	13.00	No
		179	6845	12.52	13.00	No
		187	6885	11.81	13.00	No
		195	6925	11.97	13.00	No
		211	7005	11.99	13.00	No
227		7085	12.22	13.00	No	

	802.11be(EHT80) (SU)	7	5985	15.52	16.00	No
		55	6225	14.95	16.00	No
		87	6385	14.79	16.00	No
		103	6465	15.01	16.00	No
		119	6545	14.92	16.00	No
		135	6625	15.54	16.00	No
		151	6705	14.97	16.00	No
		167	6785	15.11	16.00	No
		183	6865	14.83	16.00	No
		199	6945	14.89	16.00	No
		215	7025	15.37	16.00	No
	802.11be(EHT160) (SU)	15	6025	15.41	16.00	No
		47	6185	15.33	16.00	No
		79	6345	15.03	16.00	No
		111	6505	14.96	16.00	No
		143	6665	15.19	16.00	No
		175	6825	15.27	16.00	No
		207	6985	15.22	16.00	No
	802.11be(EHT20) (RU26)	1	5955	0.89	2.00	No
		49	6195	1.30	2.00	No
		93	6415	0.96	2.00	No
		97	6435	0.88	2.00	No
		105	6475	1.32	2.00	No
		113	6515	1.38	2.00	No
		117	6535	0.98	2.00	No
		149	6695	1.08	2.00	No
		181	6855	1.32	2.00	No
		185	6875	1.10	2.00	No
		209	6995	1.02	2.00	No
		233	7115	1.24	2.00	No
	802.11be(EHT20) (RU52)	1	5955	3.38	4.50	No
		49	6195	3.53	4.50	No
		93	6415	3.50	4.50	No
		97	6435	3.57	4.50	No
		105	6475	3.77	4.50	No
		113	6515	3.68	4.50	No
		117	6535	3.43	4.50	No
		149	6695	3.76	4.50	No
		181	6855	3.82	4.50	No
		185	6875	3.94	4.50	No
		209	6995	3.49	4.50	No
		233	7115	3.38	4.50	No
802.11be(EHT20)	1	5955	6.05	7.00	No	

	(RU106)	49	6195	6.02	7.00	No
		93	6415	6.20	7.00	No
		97	6435	5.88	7.00	No
		105	6475	6.41	7.00	No
		113	6515	6.37	7.00	No
		117	6535	6.29	7.00	No
		149	6695	6.38	7.00	No
		181	6855	6.30	7.00	No
		185	6875	6.43	7.00	No
		209	6995	5.79	7.00	No
		233	7115	6.35	7.00	No

Note: For WiFi SAR testing was performed on single antenna RF power in SISO mode that is larger to the single antenna RF power in MIMO mode, and for RF exposure assessment of MIMO mode simultaneous transmission used more conservative “Max. (main ant) + Max. (aux. ant)” method to determine SAR compliance. When the sum of 1-g SISO transmission SAR measurement is <1.6 W/kg, or the SPLSR value ≤0.04 the MIMO SAR test is not required.

7.1.4 6G WIFI (Aux. Antenna) (Tablet Mode)

Band (GHz)	Mode	Channel	Freq. (MHz)	Conducted Power (dBm)	Tune-up Limit (dBm)	SAR Test Require.
6	802.11a	1	5955	6.42	7.00	No
		49	6195	6.07	7.00	No
		93	6415	6.33	7.00	No
		97	6435	6.24	7.00	No
		105	6475	6.14	7.00	No
		113	6515	6.40	7.00	No
		117	6535	6.42	7.00	No
		149	6695	6.30	7.00	No
		181	6855	6.13	7.00	No
		185	6875	6.22	7.00	No
		189	6895	6.41	7.00	No
		209	6995	6.26	7.00	No
		229	7095	6.53	7.00	No
		233	7115	6.60	7.00	No
	802.11ax(HE20) (SU)	1	5955	6.10	7.00	No
		49	6195	6.06	7.00	No
		93	6415	6.24	7.00	No
		97	6435	6.46	7.00	No
		105	6475	6.80	7.00	No
		113	6515	6.27	7.00	No
		117	6535	6.46	7.00	No
		149	6695	6.37	7.00	No
		181	6855	6.72	7.00	No
		185	6875	6.06	7.00	No
		209	6995	6.23	7.00	No
		233	7115	6.49	7.00	No
	802.11ax(HE40) (SU)	3	5965	9.06	10.00	No
		51	6205	9.49	10.00	No
		91	6405	9.52	10.00	No
		99	6445	9.13	10.00	No
		107	6485	9.80	10.00	No
		115	6525	9.51	10.00	No
		123	6565	9.50	10.00	No
		147	6685	9.76	10.00	No
		179	6845	9.34	10.00	No
		187	6885	9.71	10.00	No
195		6925	9.49	10.00	No	
211		7005	9.30	10.00	No	
227	7085	9.47	10.00	No		

	802.11ax(HE80) (SU)	7	5985	9.97	10.50	No
		55	6225	10.31	10.50	No
		87	6385	10.08	10.50	No
		103	6465	9.94	10.50	No
		119	6545	9.75	10.50	No
		135	6625	9.68	10.50	No
		151	6705	9.76	10.50	No
		167	6785	9.80	10.50	No
		183	6865	9.70	10.50	No
		199	6945	10.33	10.50	No
		215	7025	9.73	10.50	No
	802.11ax(HE160) (SU)	15	6025	10.16	10.50	Yes
		47	6185	10.48	10.50	Yes
		79	6345	10.33	10.50	Yes
		111	6505	10.33	10.50	Yes
		143	6665	10.46	10.50	Yes
		175	6825	10.04	10.50	Yes
		207	6985	10.42	10.50	Yes
	802.11be(EHT20) (SU)	1	5955	6.61	7.00	No
		49	6195	6.09	7.00	No
		93	6415	6.20	7.00	No
		97	6435	6.45	7.00	No
		105	6475	6.19	7.00	No
		113	6515	6.41	7.00	No
		117	6535	6.39	7.00	No
		149	6695	6.76	7.00	No
		181	6855	6.81	7.00	No
		185	6875	6.25	7.00	No
		209	6995	6.47	7.00	No
		233	7115	6.81	7.00	No
	802.11be(EHT40) (SU)	3	5965	9.48	10.00	No
		51	6205	9.36	10.00	No
		91	6405	9.21	10.00	No
		99	6445	9.71	10.00	No
		107	6485	9.29	10.00	No
		115	6525	9.72	10.00	No
		123	6565	9.74	10.00	No
		147	6685	9.11	10.00	No
		179	6845	9.13	10.00	No
		187	6885	9.13	10.00	No
		195	6925	9.32	10.00	No
		211	7005	9.24	10.00	No
227		7085	9.65	10.00	No	

	802.11be(EHT80) (SU)	7	5985	10.09	10.50	No
		55	6225	10.04	10.50	No
		87	6385	9.96	10.50	No
		103	6465	9.69	10.50	No
		119	6545	9.72	10.50	No
		135	6625	9.89	10.50	No
		151	6705	9.96	10.50	No
		167	6785	9.55	10.50	No
		183	6865	10.11	10.50	No
		199	6945	9.76	10.50	No
		215	7025	10.05	10.50	No
	802.11be(EHT160) (SU)	15	6025	9.98	10.50	No
		47	6185	9.64	10.50	No
		79	6345	10.11	10.50	No
		111	6505	9.92	10.50	No
		143	6665	10.12	10.50	No
		175	6825	10.33	10.50	No
		207	6985	9.59	10.50	No
	802.11be(EHT20) (RU26)	1	5955	-1.71	-1.00	No
		49	6195	-1.81	-1.00	No
		93	6415	-1.70	-1.00	No
		97	6435	-1.32	-1.00	No
		105	6475	-1.52	-1.00	No
		113	6515	-1.21	-1.00	No
		117	6535	-1.28	-1.00	No
		149	6695	-1.61	-1.00	No
		181	6855	-1.63	-1.00	No
		185	6875	-1.44	-1.00	No
		209	6995	-1.44	-1.00	No
		233	7115	-1.92	-1.00	No
	802.11be(EHT20) (RU52)	1	5955	1.30	1.50	No
		49	6195	1.20	1.50	No
		93	6415	1.27	1.50	No
		97	6435	0.56	1.50	No
		105	6475	1.12	1.50	No
		113	6515	1.23	1.50	No
		117	6535	0.66	1.50	No
		149	6695	1.13	1.50	No
		181	6855	0.99	1.50	No
		185	6875	1.22	1.50	No
		209	6995	0.99	1.50	No
		233	7115	0.83	1.50	No
802.11be(EHT20)	1	5955	3.48	4.00	No	

	(RU106)	49	6195	3.25	4.00	No
		93	6415	3.21	4.00	No
		97	6435	3.34	4.00	No
		105	6475	3.51	4.00	No
		113	6515	3.59	4.00	No
		117	6535	3.53	4.00	No
		149	6695	3.37	4.00	No
		181	6855	3.61	4.00	No
		185	6875	3.79	4.00	No
		209	6995	3.56	4.00	No
		233	7115	3.09	4.00	No

Note: When multiple channel bandwidth configurations in a frequency band have the same maximum tune-up output power, the test configuration is determined by applying the following steps sequentially.

- 1) The largest channel bandwidth configuration is selected between the multiple configurations in a frequency band with the same maximum tune-up output power.

7.1.5 6G WIFI (Main Antenna) (Tablet Mode)

Band (GHz)	Mode	Channel	Freq. (MHz)	Conducted Power (dBm)	Tune-up Limit (dBm)	SAR Test Require.
6	802.11a	1	5955	6.50	7.00	No
		49	6195	6.24	7.00	No
		93	6415	6.58	7.00	No
		97	6435	6.34	7.00	No
		105	6475	6.42	7.00	No
		113	6515	6.11	7.00	No
		117	6535	6.21	7.00	No
		149	6695	6.21	7.00	No
		181	6855	6.44	7.00	No
		185	6875	6.54	7.00	No
		189	6895	6.15	7.00	No
		209	6995	6.59	7.00	No
		229	7095	6.37	7.00	No
		233	7115	6.58	7.00	No
	802.11ax(HE20) (SU)	1	5955	6.59	7.00	No
		49	6195	6.69	7.00	No
		93	6415	6.09	7.00	No
		97	6435	6.13	7.00	No
		105	6475	6.30	7.00	No
		113	6515	6.19	7.00	No
		117	6535	6.36	7.00	No
		149	6695	6.31	7.00	No
		181	6855	6.43	7.00	No
		185	6875	6.22	7.00	No
		209	6995	6.28	7.00	No
		233	7115	6.09	7.00	No
	802.11ax(HE40) (SU)	3	5965	9.22	10.00	No
		51	6205	9.07	10.00	No
		91	6405	9.38	10.00	No
		99	6445	9.19	10.00	No
		107	6485	9.07	10.00	No
		115	6525	9.79	10.00	No
		123	6565	9.54	10.00	No
		147	6685	9.05	10.00	No
		179	6845	9.06	10.00	No
		187	6885	9.67	10.00	No
195		6925	9.45	10.00	No	
211		7005	9.43	10.00	No	
227	7085	9.42	10.00	No		

	802.11ax(HE80) (SU)	7	5985	9.98	10.50	No
		55	6225	9.89	10.50	No
		87	6385	9.58	10.50	No
		103	6465	10.09	10.50	No
		119	6545	10.19	10.50	No
		135	6625	9.99	10.50	No
		151	6705	10.10	10.50	No
		167	6785	10.22	10.50	No
		183	6865	10.34	10.50	No
		199	6945	9.89	10.50	No
		215	7025	9.79	10.50	No
	802.11ax(HE160) (SU)	15	6025	10.04	10.50	Yes
		47	6185	10.31	10.50	Yes
		79	6345	10.05	10.50	Yes
		111	6505	10.49	10.50	Yes
		143	6665	10.48	10.50	Yes
		175	6825	10.49	10.50	Yes
		207	6985	10.38	10.50	Yes
	802.11be(EHT20) (SU)	1	5955	6.36	7.00	No
		49	6195	6.70	7.00	No
		93	6415	6.34	7.00	No
		97	6435	6.40	7.00	No
		105	6475	6.35	7.00	No
		113	6515	6.46	7.00	No
		117	6535	6.49	7.00	No
		149	6695	6.66	7.00	No
		181	6855	6.22	7.00	No
		185	6875	6.24	7.00	No
		209	6995	6.77	7.00	No
		233	7115	6.62	7.00	No
	802.11be(EHT40) (SU)	3	5965	9.69	10.00	No
		51	6205	9.52	10.00	No
		91	6405	9.32	10.00	No
		99	6445	9.25	10.00	No
		107	6485	9.24	10.00	No
		115	6525	9.20	10.00	No
		123	6565	9.55	10.00	No
		147	6685	9.73	10.00	No
		179	6845	9.66	10.00	No
		187	6885	9.16	10.00	No
		195	6925	9.47	10.00	No
		211	7005	9.37	10.00	No
227		7085	9.80	10.00	No	

	802.11be(EHT80) (SU)	7	5985	10.32	10.50	No
		55	6225	10.15	10.50	No
		87	6385	10.00	10.50	No
		103	6465	10.16	10.50	No
		119	6545	9.82	10.50	No
		135	6625	9.87	10.50	No
		151	6705	9.81	10.50	No
		167	6785	9.55	10.50	No
		183	6865	10.12	10.50	No
		199	6945	9.67	10.50	No
		215	7025	9.74	10.50	No
	802.11be(EHT160) (SU)	15	6025	9.86	10.50	No
		47	6185	10.09	10.50	No
		79	6345	10.00	10.50	No
		111	6505	9.66	10.50	No
		143	6665	9.96	10.50	No
		175	6825	9.77	10.50	No
		207	6985	9.73	10.50	No
	802.11be(EHT20) (RU26)	1	5955	-1.86	-1.00	No
		49	6195	-1.41	-1.00	No
		93	6415	-1.56	-1.00	No
		97	6435	-1.79	-1.00	No
		105	6475	-1.65	-1.00	No
		113	6515	-1.80	-1.00	No
		117	6535	-1.91	-1.00	No
		149	6695	-1.36	-1.00	No
		181	6855	-1.75	-1.00	No
		185	6875	-1.50	-1.00	No
		209	6995	-1.28	-1.00	No
		233	7115	-1.51	-1.00	No
	802.11be(EHT20) (RU52)	1	5955	0.63	1.50	No
		49	6195	1.26	1.50	No
		93	6415	1.29	1.50	No
		97	6435	0.71	1.50	No
		105	6475	1.18	1.50	No
		113	6515	0.74	1.50	No
		117	6535	0.62	1.50	No
		149	6695	0.64	1.50	No
		181	6855	1.03	1.50	No
		185	6875	1.21	1.50	No
		209	6995	0.77	1.50	No
		233	7115	1.29	1.50	No
802.11be(EHT20)	1	5955	3.22	4.00	No	

	(RU106)	49	6195	3.61	4.00	No
		93	6415	3.41	4.00	No
		97	6435	3.60	4.00	No
		105	6475	3.58	4.00	No
		113	6515	3.50	4.00	No
		117	6535	3.56	4.00	No
		149	6695	3.12	4.00	No
		181	6855	3.30	4.00	No
		185	6875	3.54	4.00	No
		209	6995	3.38	4.00	No
		233	7115	3.76	4.00	No

Note: When multiple channel bandwidth configurations in a frequency band have the same maximum tune-up output power, the test configuration is determined by applying the following steps sequentially.

1) The largest channel bandwidth configuration is selected between the multiple configurations in a frequency band with the same maximum tune-up output power.

7.1.6 6G WIFI (MIMO) (Tablet Mode)

Band (GHz)	Mode	Channel	Freq. (MHz)	Conducted Power (dBm)	Tune-up Limit (dBm)	SAR Test Require.
6	802.11a	1	5955	9.35	10.00	No
		49	6195	9.37	10.00	No
		93	6415	9.22	10.00	No
		97	6435	9.50	10.00	No
		105	6475	9.74	10.00	No
		113	6515	9.43	10.00	No
		117	6535	9.63	10.00	No
		149	6695	9.19	10.00	No
		181	6855	9.82	10.00	No
		185	6875	9.48	10.00	No
		189	6895	9.60	10.00	No
		209	6995	9.27	10.00	No
		229	7095	9.52	10.00	No
		233	7115	9.37	10.00	No
	802.11ax(HE20) (SU)	1	5955	9.15	10.00	No
		49	6195	9.25	10.00	No
		93	6415	9.73	10.00	No
		97	6435	9.53	10.00	No
		105	6475	9.53	10.00	No
		113	6515	9.56	10.00	No
		117	6535	9.25	10.00	No
		149	6695	9.23	10.00	No
		181	6855	9.44	10.00	No
		185	6875	9.81	10.00	No
		209	6995	9.39	10.00	No
		233	7115	9.75	10.00	No
	802.11ax(HE40) (SU)	3	5965	12.30	13.00	No
		51	6205	12.79	13.00	No
		91	6405	12.41	13.00	No
		99	6445	12.41	13.00	No
		107	6485	12.70	13.00	No
		115	6525	12.13	13.00	No
		123	6565	12.09	13.00	No
		147	6685	12.16	13.00	No
		179	6845	12.49	13.00	No
		187	6885	12.39	13.00	No
195		6925	12.43	13.00	No	
211		7005	12.56	13.00	No	
227	7085	12.80	13.00	No		

	802.11ax(HE80) (SU)	7	5985	12.62	13.50	No
		55	6225	12.55	13.50	No
		87	6385	13.13	13.50	No
		103	6465	12.63	13.50	No
		119	6545	13.01	13.50	No
		135	6625	13.04	13.50	No
		151	6705	12.64	13.50	No
		167	6785	13.14	13.50	No
		183	6865	12.89	13.50	No
		199	6945	12.64	13.50	No
		215	7025	12.75	13.50	No
	802.11ax(HE160) (SU)	15	6025	13.00	13.50	No
		47	6185	12.93	13.50	No
		79	6345	12.89	13.50	No
		111	6505	13.20	13.50	No
		143	6665	13.31	13.50	No
		175	6825	13.20	13.50	No
		207	6985	12.93	13.50	No
	802.11be(EHT20) (SU)	1	5955	9.20	10.00	No
		49	6195	9.06	10.00	No
		93	6415	9.06	10.00	No
		97	6435	9.62	10.00	No
		105	6475	9.33	10.00	No
		113	6515	9.10	10.00	No
		117	6535	9.14	10.00	No
		149	6695	9.46	10.00	No
		181	6855	9.30	10.00	No
		185	6875	9.61	10.00	No
		209	6995	9.26	10.00	No
		233	7115	9.07	10.00	No
	802.11be(EHT40) (SU)	3	5965	12.26	13.00	No
		51	6205	12.25	13.00	No
		91	6405	12.43	13.00	No
		99	6445	12.75	13.00	No
		107	6485	12.57	13.00	No
		115	6525	12.74	13.00	No
		123	6565	12.21	13.00	No
		147	6685	12.81	13.00	No
		179	6845	12.24	13.00	No
		187	6885	12.36	13.00	No
		195	6925	12.77	13.00	No
		211	7005	12.80	13.00	No
227		7085	12.69	13.00	No	

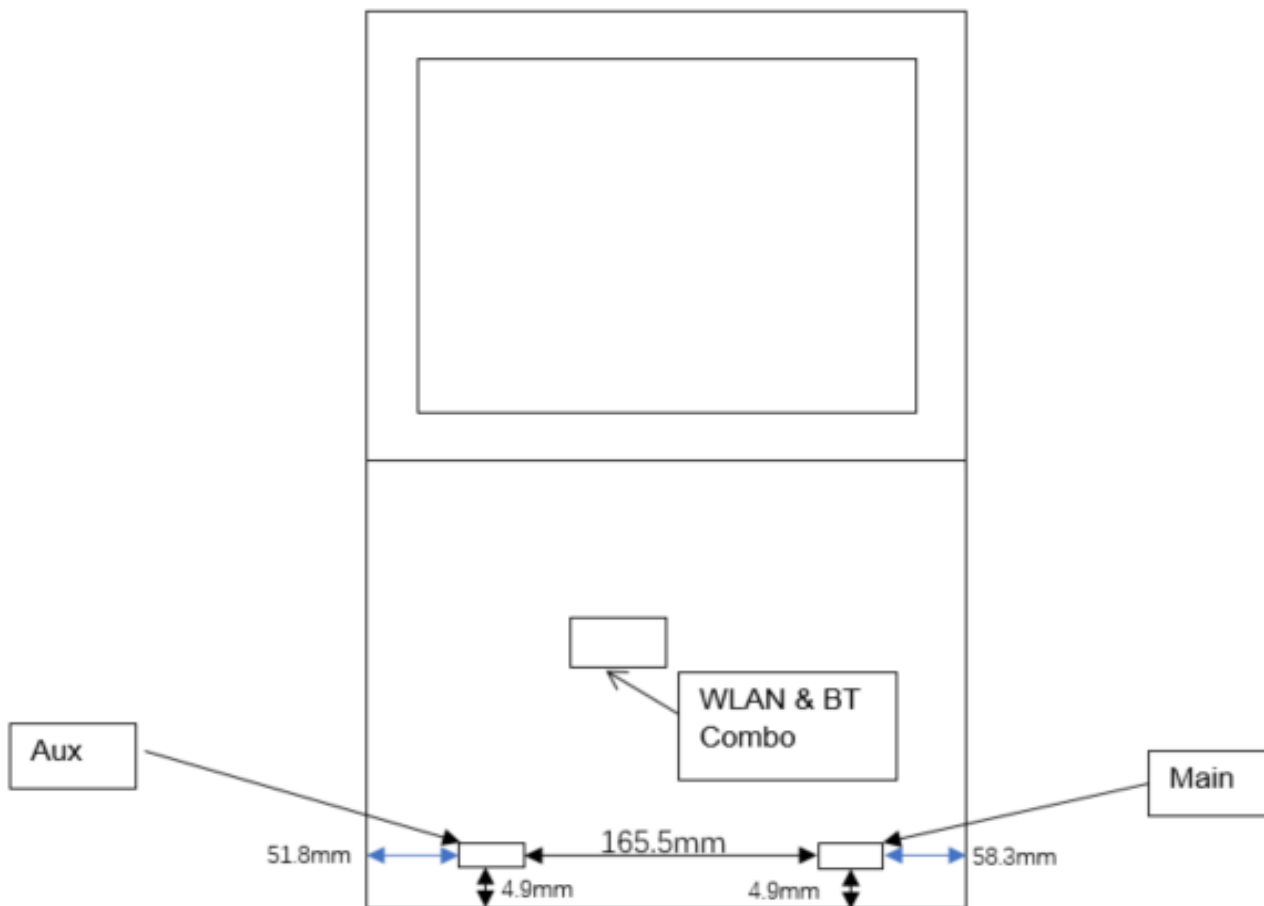
	802.11be(EHT80) (SU)	7	5985	12.56	13.50	No
		55	6225	12.69	13.50	No
		87	6385	12.78	13.50	No
		103	6465	13.04	13.50	No
		119	6545	13.12	13.50	No
		135	6625	13.08	13.50	No
		151	6705	12.94	13.50	No
		167	6785	12.71	13.50	No
		183	6865	13.12	13.50	No
		199	6945	13.28	13.50	No
		215	7025	12.86	13.50	No
	802.11be(EHT160) (SU)	15	6025	12.93	13.50	No
		47	6185	13.05	13.50	No
		79	6345	12.71	13.50	No
		111	6505	12.67	13.50	No
		143	6665	12.71	13.50	No
		175	6825	12.66	13.50	No
		207	6985	12.55	13.50	No
	802.11be(EHT20) (RU26)	1	5955	1.37	2.00	No
		49	6195	1.64	2.00	No
		93	6415	1.31	2.00	No
		97	6435	1.54	2.00	No
		105	6475	1.84	2.00	No
		113	6515	1.17	2.00	No
		117	6535	1.50	2.00	No
		149	6695	1.76	2.00	No
		181	6855	1.22	2.00	No
		185	6875	1.37	2.00	No
		209	6995	1.78	2.00	No
		233	7115	1.19	2.00	No
	802.11be(EHT20) (RU52)	1	5955	4.23	4.50	No
		49	6195	4.15	4.50	No
		93	6415	3.66	4.50	No
		97	6435	3.75	4.50	No
		105	6475	4.29	4.50	No
		113	6515	3.58	4.50	No
		117	6535	4.13	4.50	No
		149	6695	3.91	4.50	No
		181	6855	3.99	4.50	No
		185	6875	3.83	4.50	No
		209	6995	3.55	4.50	No
		233	7115	4.05	4.50	No
802.11be(EHT20)	1	5955	6.48	7.00	No	

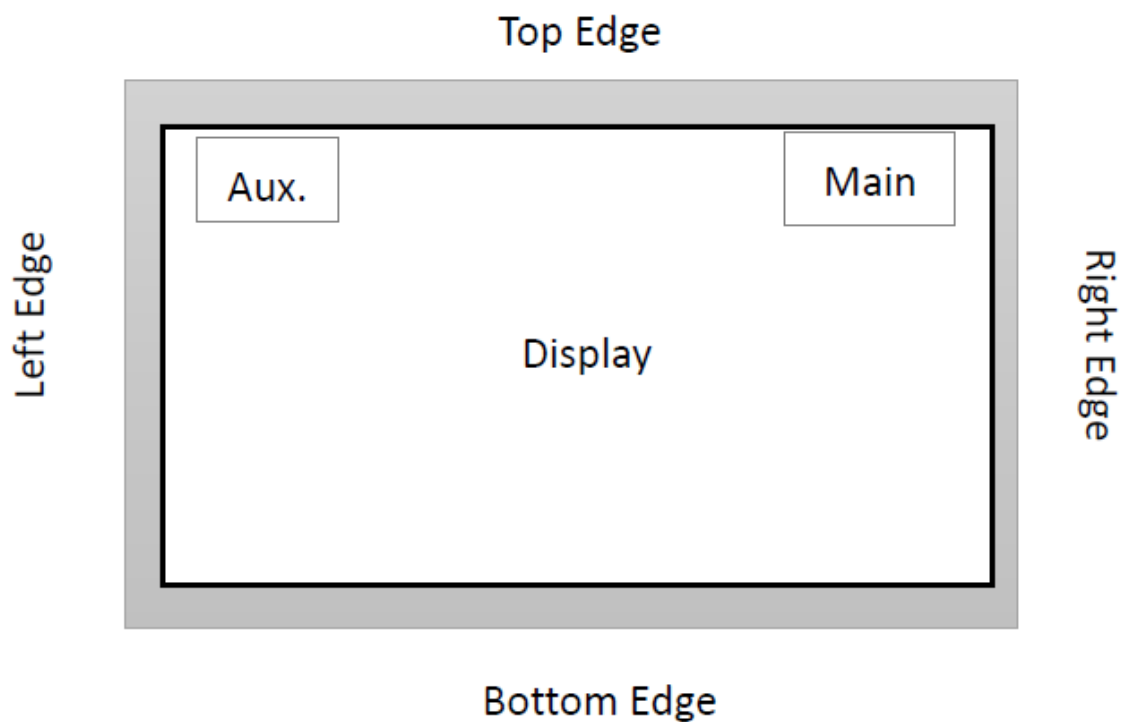
	(RU106)	49	6195	6.57	7.00	No
		93	6415	6.09	7.00	No
		97	6435	6.24	7.00	No
		105	6475	6.29	7.00	No
		113	6515	6.18	7.00	No
		117	6535	6.21	7.00	No
		149	6695	6.79	7.00	No
		181	6855	6.32	7.00	No
		185	6875	6.42	7.00	No
		209	6995	6.29	7.00	No
		233	7115	6.67	7.00	No

Note: For WiFi SAR testing was performed on single antenna RF power in SISO mode that is larger to the single antenna RF power in MIMO mode, and for RF exposure assessment of MIMO mode simultaneous transmission used more conservative “Max. (main ant) + Max. (aux. ant)” method to determine SAR compliance. When the sum of 1-g SISO transmission SAR measurement is <1.6 W/kg, or the SPLSR value ≤0.04 the MIMO SAR test is not required.

8 ANTENNA LOCATION

8.1 Antenna Location Sketch





Antenna	Support Bands
Aux.	WLAN 6G
Main	WLAN 6G

9 TEST RESULT OF POWER DENSITY

General Note:

1. The reported PD is the measured Total PD value adjusted for maximum tune-up tolerance and duty cycle factor.
 - a. Tune-up scaling Factor = tune-up limit power (mW) / EUT RF power (mW), where tune-up limit is the maximum rated power among all production units.
 - b. For PD testing of WIFI signal with non-100% duty cycle, the measured PD is scaled-up by the duty cycle scaling factor which is equal to "1/(duty cycle)".
2. The most conservative test distance of 2mm was applied to PD measurement.
3. Power density was calculated by repeated E-field measurements on two measurement planes separated by $\lambda/4$.
4. The device was configured to transmit continuously at the required data rate, channel bandwidth and signal modulation, using the highest transmission duty factor supported by the test mode tools.
5. Per FCC guidance and equipment manufacturer guidance, power density results were scaled according to IEC 62479:2010 for the portion of the measurement uncertainty > 30%. Total expanded uncertainty of 2.66 dB (84.5%) was used to determine the psPD measurement scaling factor.
6. According to TCBC workshop in October 2018 that 4cm² averaging area may now be considered.

9.1 WIFI 6GHz SAR

Mode	Antenna Manufacturer	Antenna	Test Position	Position	Dist. (mm)	Ch.	Freq. (MHz)	Power Drift (dB)	1g Meas SAR (W/kg)	Meas. Power (dBm)	Max. tune-up power (dBm)	Scaling Factor	Duty cycle (%)	Duty Factor	1g Scaled SAR (W/kg)	Measured APD 4cm ² [W/m ²]	Scaled APD [W/m ²]
Body																	
802.11 ax160	AWAN	Aux.	Laptop	Bottom Side	0	79	6345	-0.01	0.239	12.56	13.00	1.107	98.50	1.015	0.269	1.860	2.090
	AWAN	Aux.	Laptop	Front Edge	0	79	6345	-0.11	0.289	12.56	13.00	1.107	98.50	1.015	0.325	1.890	2.124
	Southstar	Aux.	Laptop	Bottom Side	0	79	6345	-0.09	0.201	12.56	13.00	1.107	98.50	1.015	0.226	1.250	1.405
	Southstar	Aux.	Laptop	Front Edge	0	79	6345	-0.12	0.263	12.56	13.00	1.107	98.50	1.015	0.296	1.960	2.202
	AWAN	Aux.	Tablet	Back Side	0	79	6345	0.14	0.286	12.56	13.00	1.107	98.50	1.015	0.321	1.770	1.989
	AWAN	Aux.	Tablet	Top Edge	0	15	6025	0.01	0.095	10.16	10.50	1.081	98.50	1.015	0.104	0.850	0.933
	AWAN	Aux.	Tablet	Back Side	0	47	6185	0.01	0.246	10.48	10.50	1.005	98.50	1.015	0.251	1.890	1.928
	AWAN	Aux.	Tablet	Back Side	0	79	6345	0.01	0.317	10.33	10.50	1.040	98.50	1.015	0.335	2.210	2.333
	AWAN	Aux.	Tablet	Back Side	0	111	6505	0.17	0.212	10.33	10.50	1.040	98.50	1.015	0.224	1.740	1.837
	AWAN	Aux.	Tablet	Back Side	0	143	6665	-0.15	0.263	10.46	10.50	1.009	98.50	1.015	0.269	1.760	1.802
	AWAN	Aux.	Tablet	Back Side	0	175	6825	0.10	0.274	10.04	10.50	1.112	98.50	1.015	0.309	2.010	2.269
	AWAN	Aux.	Tablet	Back Side	0	207	6985	-0.08	0.281	10.42	10.50	1.019	98.50	1.015	0.291	1.940	2.007
	Southstar	Aux.	Tablet	Back Side	0	79	6345	0.04	0.221	10.33	10.50	1.040	98.50	1.015	0.233	1.840	1.942
	Southstar	Aux.	Tablet	Top Edge	0	79	6345	0.19	0.266	10.33	10.50	1.040	98.50	1.015	0.281	1.890	1.995
	AWAN	Main	Laptop	Bottom Side	0	79	6345	0.08	0.479	12.94	13.00	1.014	98.50	1.015	0.493	2.530	2.604
	AWAN	Main	Laptop	Front Edge	0	79	6345	0.05	0.442	12.94	13.00	1.014	98.50	1.015	0.455	2.510	2.583
	Southstar	Main	Laptop	Bottom Side	0	79	6345	0.07	0.352	12.94	13.00	1.014	98.50	1.015	0.362	2.310	2.377
	Southstar	Main	Laptop	Front Edge	0	79	6345	0.18	0.412	12.94	13.00	1.014	98.50	1.015	0.424	2.450	2.522
	AWAN	Main	Tablet	Back Side	0	79	6345	0.12	0.332	10.05	10.50	1.109	98.50	1.015	0.374	2.360	2.656
	AWAN	Main	Tablet	Top Edge	0	79	6345	-0.06	0.232	10.05	10.50	1.109	98.50	1.015	0.261	3.010	3.388
	AWAN	Main	Tablet	Back Side	0	15	6025	0.15	0.422	10.04	10.50	1.112	98.50	1.015	0.476	2.430	2.743
	AWAN	Main	Tablet	Back Side	0	47	6185	0.02	0.504	10.31	10.50	1.045	98.50	1.015	0.535	3.160	3.352
	AWAN	Main	Tablet	Back Side	0	111	6505	0.19	0.388	10.49	10.50	1.002	98.50	1.015	0.395	2.250	2.288
	AWAN	Main	Tablet	Back Side	0	143	6665	0.08	0.412	10.48	10.50	1.005	98.50	1.015	0.420	2.360	2.407
	AWAN	Main	Tablet	Back Side	0	175	6825	-0.13	0.304	10.49	10.50	1.002	98.50	1.015	0.309	2.250	2.288
	AWAN	Main	Tablet	Back Side	0	207	6985	-0.18	0.222	10.38	10.50	1.028	98.50	1.015	0.232	1.670	1.743
	Southstar	Main	Tablet	Back Side	0	79	6345	0.16	0.336	10.05	10.50	1.109	98.50	1.015	0.378	2.440	2.747
	Southstar	Main	Tablet	Top Edge	0	79	6345	-0.17	0.214	10.05	10.50	1.109	98.50	1.015	0.241	2.880	3.242

Note: Refer to ANNEX C for the detailed test data for each test configuration.

Mode	Antenna Manufacturer	Antenna	Test Position	Position	Dist. (mm)	Ch.	Freq. (MHz)	Power Drift (dB)	10g Meas SAR (W/kg)	Meas. Power (dBm)	Max. tune-up power (dBm)	Scaling Factor	Duty cycle (%)	Duty Factor	10g Scaled SAR (W/kg)	Measured APD 4cm ² [W/m ²]	Scaled APD [W/m ²]
Limbs																	
802.11 ax160	AWAN	Aux.	Laptop	Keyboard Side	0	79	6345	-0.02	0.201	12.56	13.00	1.107	98.50	1.015	0.226	6.010	6.753
	Southstar	Aux.	Laptop	Keyboard Side	0	79	6345	-0.05	0.299	12.56	13.00	1.107	98.50	1.015	0.336	6.830	7.674
	AWAN	Aux.	Laptop	Keyboard Side	0	15	6025	0.11	0.186	12.70	13.00	1.072	98.50	1.015	0.202	5.790	6.300
	AWAN	Aux.	Laptop	Keyboard Side	0	47	6185	-0.10	0.175	12.67	13.00	1.079	98.50	1.015	0.192	5.590	6.122
	AWAN	Aux.	Laptop	Keyboard Side	0	111	6505	-0.08	0.196	12.90	13.00	1.023	98.50	1.015	0.204	5.860	6.085
	AWAN	Aux.	Laptop	Keyboard Side	0	143	6665	0.13	0.176	12.78	13.00	1.052	98.50	1.015	0.188	5.640	6.022
	AWAN	Aux.	Laptop	Keyboard Side	0	175	6825	-0.07	0.192	12.90	13.00	1.023	98.50	1.015	0.199	5.720	5.939
	AWAN	Aux.	Laptop	Keyboard Side	0	207	6985	0.19	0.188	12.75	13.00	1.059	98.50	1.015	0.202	5.680	6.105
	AWAN	Main	Laptop	Keyboard Side	0	79	6345	-0.09	0.438	12.94	13.00	1.014	98.50	1.015	0.451	9.920	10.210
	Southstar	Main	Laptop	Keyboard Side	0	79	6345	-0.19	0.356	12.94	13.00	1.014	98.50	1.015	0.366	8.690	8.944
	AWAN	Main	Laptop	Keyboard Side	0	15	6025	0.17	0.336	12.75	13.00	1.059	98.50	1.015	0.361	8.140	8.750
	AWAN	Main	Laptop	Keyboard Side	0	47	6185	-0.14	0.346	12.62	13.00	1.091	98.50	1.015	0.383	8.550	9.468
	AWAN	Main	Laptop	Keyboard Side	0	111	6505	-0.11	0.401	12.61	13.00	1.094	98.50	1.015	0.445	9.120	10.127
	AWAN	Main	Laptop	Keyboard Side	0	143	6665	0.19	0.369	12.81	13.00	1.045	98.50	1.015	0.391	8.560	9.079
	AWAN	Main	Laptop	Keyboard Side	0	175	6825	-0.04	0.322	12.80	13.00	1.047	98.50	1.015	0.342	7.980	8.480
	AWAN	Main	Laptop	Keyboard Side	0	207	6985	0.04	0.321	12.57	13.00	1.104	98.50	1.015	0.360	7.840	8.785
	Note: Refer to ANNEX C for the detailed test data for each test configuration.																

9.2 WIFI 6GHz PD

Mode	Antenna Manufacturer	Test State	Antenna	Position	Dist. (mm)	Ch.	Freq. (MHz)	Power Drift (dB)	Meas. Total psPD [W/m ²]	Meas. uncertainty Scaling Factor	Meas. Power (dBm)	Max. tune-up power (dBm)	Scaling Factor	Duty cycle (%)	Duty cycle Factor	Scaled Totalps PD [W/m ²]	Meas. No.
Body																	
802.11 ax160	AWAN	Tablet	Aux.	Back Side	2	79	6345	0.12	1.350	1.545	10.33	10.50	1.040	98.50	1.015	2.202	/
	AWAN	Laptop	Main	Bottom Side	2	79	6345	-0.04	0.483	1.545	12.94	13.00	1.014	98.50	1.015	0.768	/
	AWAN	Laptop	Main	Front Edge	2	79	6345	0.05	0.826	1.545	12.94	13.00	1.014	98.50	1.015	1.313	/
	AWAN	Tablet	Main	Back Side	2	79	6345	-0.09	1.530	1.545	10.05	10.50	1.109	98.50	1.015	2.661	/
	AWAN	Tablet	Main	Top Edge	2	79	6345	-0.10	0.457	1.545	10.05	10.50	1.109	98.50	1.015	0.795	/
	AWAN	Tablet	Main	Left Edge	2	79	6345	0.15	0.061	1.545	10.05	10.50	1.109	98.50	1.015	0.106	/
	AWAN	Tablet	Main	Right Edge	2	79	6345	-0.06	0.146	1.545	10.05	10.50	1.109	98.50	1.015	0.254	/
	AWAN	Tablet	Main	Back Side	2	15	6025	0.12	1.620	1.545	10.04	10.50	1.112	98.50	1.015	2.825	/
	AWAN	Tablet	Main	Back Side	2	47	6185	-0.04	2.050	1.545	10.31	10.50	1.045	98.50	1.015	3.359	1#
	AWAN	Tablet	Main	Back Side	2	111	6505	0.04	1.730	1.545	10.49	10.50	1.002	98.50	1.015	2.718	/
	AWAN	Tablet	Main	Back Side	2	143	6665	-0.06	1.580	1.545	10.48	10.50	1.005	98.50	1.015	2.490	/
	AWAN	Tablet	Main	Back Side	2	207	6985	0.19	1.640	1.545	10.38	10.50	1.028	98.50	1.015	2.644	/
Note: According to FCC test guidance and equipment manufacturer guidance, power density results were scaled according to IEC 62479:2010 for the portion of the measurement uncertainty > 30%. Total expanded uncertainty of 2.66 dB (84.5%) was used to determine the psPD measurement scaling factor.																	

Mode	Antenna Manufacturer	Test State	Antenna	Position	Dist. (mm)	Grid Step (λ)	Ch.	Freq. (MHz)	IPDn	IPD ratio (≥1)
802.11ax160	AWAN	Tablet	Main	Back Side	2	0.0625	47	6185	1.84	2.19
	AWAN	Tablet	Main	Back Side	9.7	0.0625	47	6185	1.11	

10 TEST EQUIPMENTS LIST

Description	Manufacturer	Model	Serial No./Version	Cal. Date	Cal. Due
PC	Dell	N/A	N/A	N/A	N/A
Test System	Speag	DASY8 mmWave	V2.4.0.44	N/A	N/A
Verification Source	Speag	10GHz	SN: 2010	2024/06/19	2025/06/18
Data Acquisition Electronics	Speag	DAE4	SN: 1710	2024/01/03	2025/01/02
EUmmW Probe	Speag	EUmmWV4	SN: 9607	2024/02/12	2025/02/11
Signal Generator	R&S	SMB100A	177746	2024/04/24	2025/04/23
Power Meter	R&S	NRVD-B2	835843/014	2024/08/08	2025/08/07
Power Sensor	R&S	NRV-Z4	100381	2024/08/08	2025/08/07
Power Sensor	R&S	NRV-Z2	100211	2024/08/08	2025/08/07
Thermometer	Elitech	RC-4HC	EF7216002985	2024/10/31	2025/10/30
Power Amplifier	SATIMO	6552B	22374	N/A	N/A

ANNEX A SIMULATING LIQUID VERIFICATION RESULT

The system was verified to be within ± 0.66 dB of the power density targets on the calibration certificate according to the test system specification in the users manual and calibration facility recommendation.

Date	Freq. (GHz)	Meas. Forward Power (dBm)	Measured PD (W/m ²)	Normalized PD 4 cm ² (W/m ²)	Target Forward PD 4 cm ² (W/m ²)	Deviation (dB)
2024.12.24	10	21.50	161	180.6	183.00	-0.06

Note1: The tolerance limit of System validation ± 0.66 dB.

Note2: According the verification source 10GHz calibration report the target forward power is 22.00dBm.

Note3: Normalized PD 4 cm²= Measured PD 4 cm²*10^{^(0.1*(Target Forward power- Meas. Forward Power))}

System Performance Check Data (10GHz)

Exposure Conditions

Phantom Section	Position, Test Distance [mm]	Band	Group, UID	Frequency [MHz], Channel Number	Conversion Factor
5G Air	EDGE TOP, 10.00	Validation band	CW, 0--	10000.0, 10000	1.0

Hardware Setup

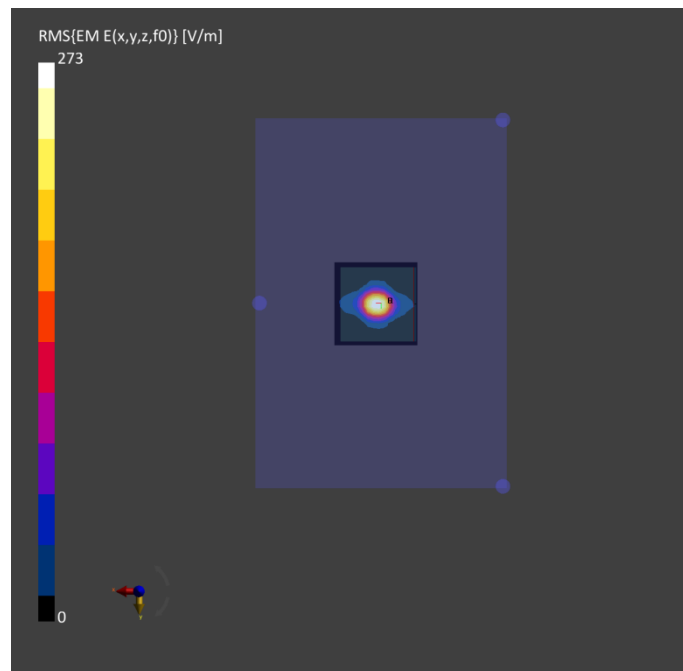
Phantom	Medium	Probe, Calibration Date	DAE, Calibration Date
mmWave- 1083	Air---	EUmmWV4 - SN9607_F1-55GHz, 2024-02-12	DAE4 Sn1710, 2024-01-03

Scan Setup

	5G Scan	
Grid Extents [mm]	25.0 x	25.0
Grid Steps [lambda]	0.25 x	0.25
Sensor Surface [mm]	10.0	
MAIA	N/A	

Measurement Results

	5G Scan
Date	2024-12-24
Avg. Area [cm ²]	4.00
psPDn+ [W/m ²]	158
psPDtot+ [W/m ²]	161
psPDmod+ [W/m ²]	156
E _{max} [V/m]	273
Power Drift [dB]	0.11



ANNEX B POWER DENSITY TEST DATA

Meas.1 Body Plane with Keyboard Side 2mm on 47 Channel in IEEE 802.11ax160 mode with Antenna Main

Exposure Conditions

Phantom Section	Position, Test Distance [mm]	Band	Group, UID	Frequency [MHz], Channel Number	Conversion Factor
5G Air	BACK, 2.00	U-NII-5	WLAN, 10755-AAC	6185.0, 47	1.0

Hardware Setup

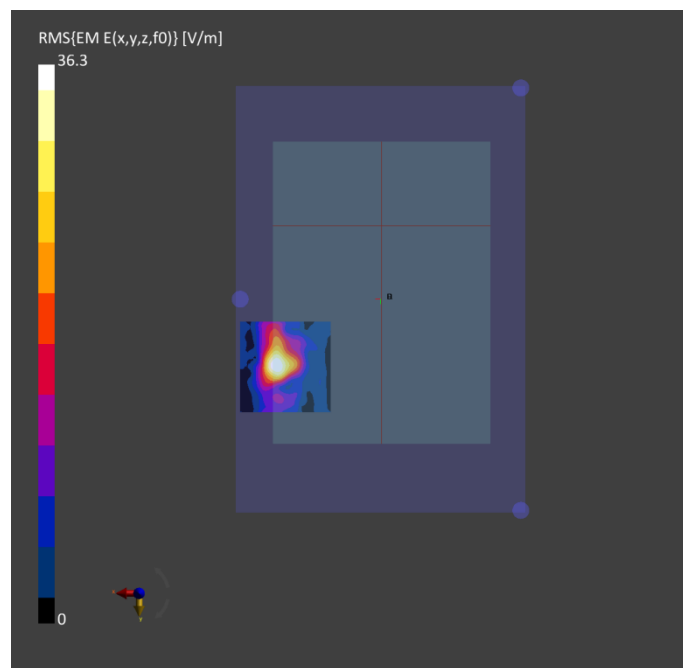
Phantom	Medium	Probe, Calibration Date	DAE, Calibration Date
mmWave- 1083	Air---	EUmmWV4 - SN9607_F1-55GHz, 2024-02-12	DAE4 Sn1710, 2024-01-03

Scan Setup

	5G Scan	
Grid Extents [mm]	100.0 x	100.0
Grid Steps [lambda]	0.0625 x	0.0625
Sensor Surface [mm]		2.0
MAIA		N/A

Measurement Results

	5G Scan
Date	2024-12-23
Avg. Area [cm ²]	4.00
psPDn+ [W/m ²]	1.84
psPDtot+ [W/m ²]	2.05
psPDmod+ [W/m ²]	2.25
E _{max} [V/m]	36.3
Power Drift [dB]	-0.04



ANNEX C EUT EXTERNAL PHOTOS

Please refer the document “BL-SZ24B1292-AW.pdf”.

ANNEX D POWER DENSITY TEST SETUP PHOTOS

Please refer the document “BL-SZ24B1292-AS-2.pdf”.

ANNEX E POWER DENSITY CALIBRATION REPORT

Please refer the document “BL-SZ24B1292-AC-3.pdf”.

Statement

1. The laboratory guarantees the scientificity, accuracy and impartiality of the test, and is responsible for all the information in the report, except the information provided by the customer. The customer is responsible for the impact of the information provided on the validity of the results.
2. The report without China inspection body and laboratory Mandatory Approval (CMA) mark has no effect of proving to the society.
3. For the report with CNAS mark or A2LA mark, the items marked with "☆" are not within the accredited scope.
4. This report is invalid if it is altered, without the signature of the testing and approval personnel, or without the "inspection and testing dedicated stamp" or test report stamp.
5. The test data and results are only valid for the tested samples provided by the customer.
6. This report shall not be partially reproduced without the written permission of the laboratory.
7. Any objection shall be raised to the laboratory within 30 days after receiving the report.

--END OF REPORT--