

Annex A. Photographs

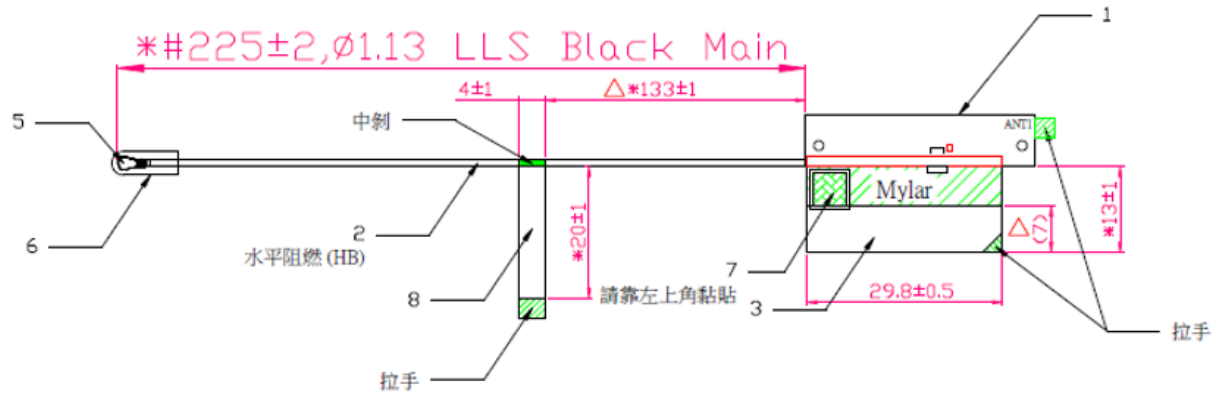
A.1 Setup Photo



A.2 Test sample

Main Antenna

Antenna Drawing

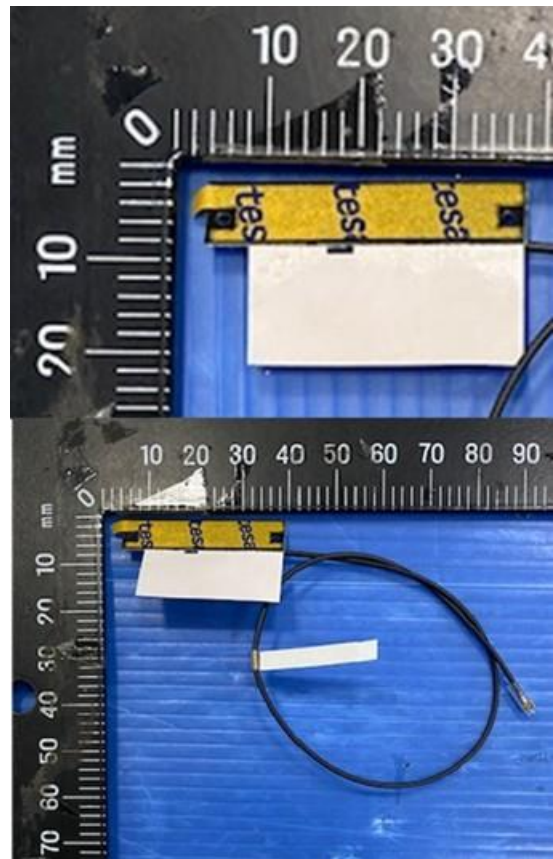


Antenna Photo

Front



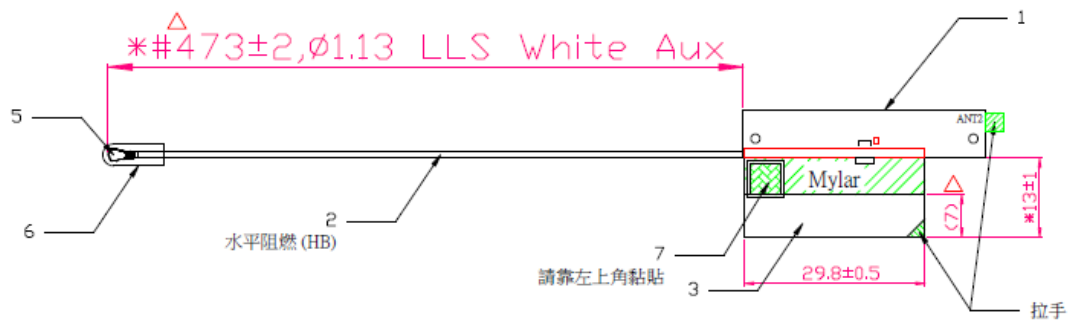
Back



Note: antenna photo should include L type ruler

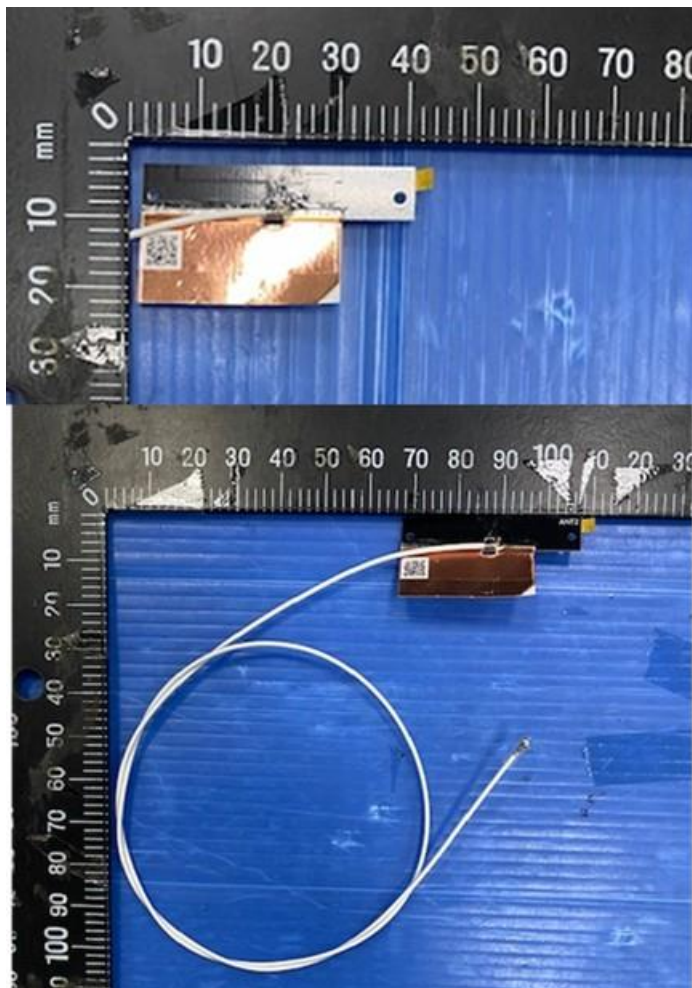
Aux Antenna

Antenna Drawing

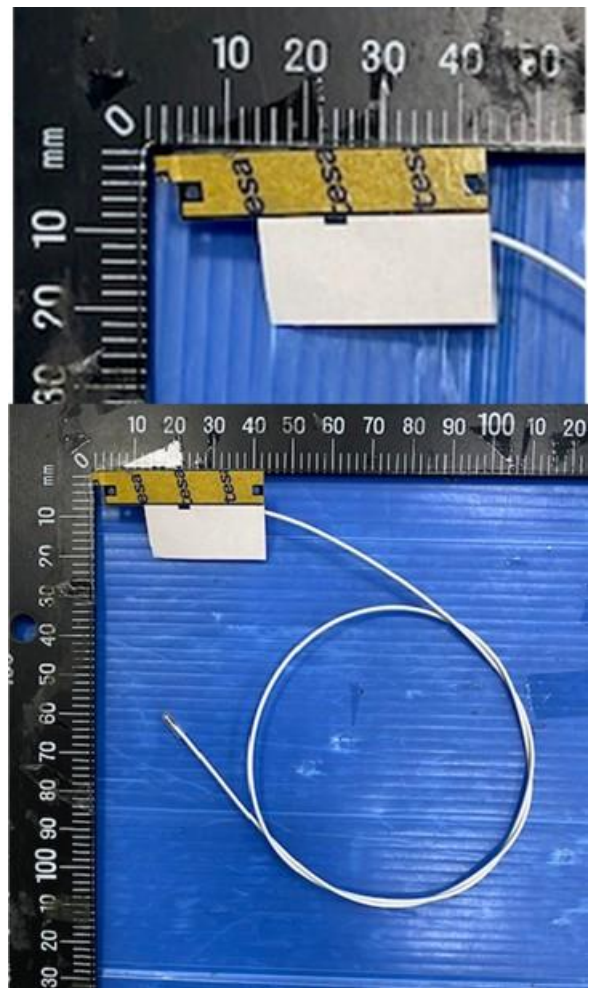


Antenna Photo

Front



[Back](#)



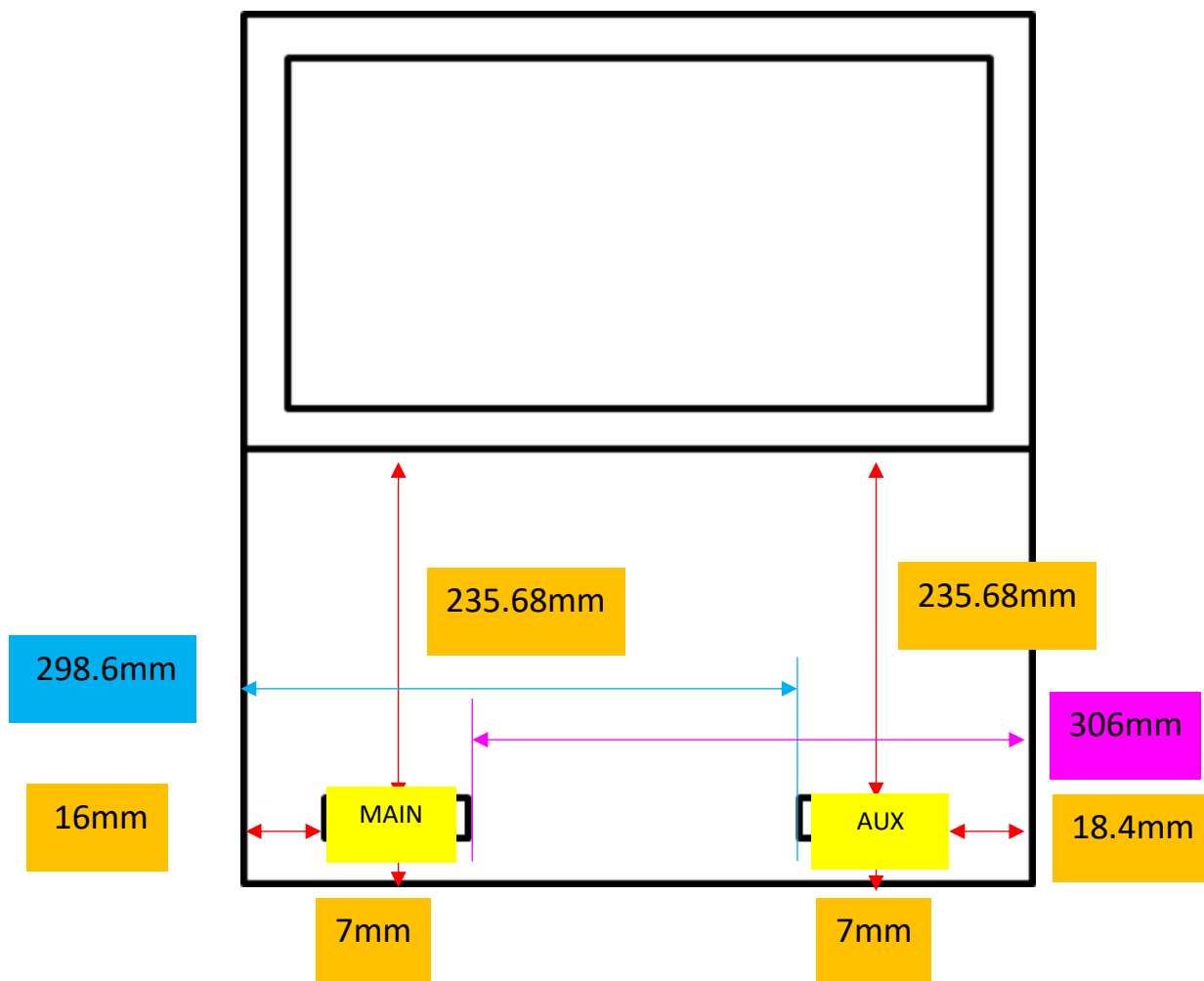
Note: antenna photo should include L type ruler

Annex B. Antenna Location

B.1 Antenna Host Platform Location Information

Include a dimensioned photo(s) or dimensioned drawing(s) of Main and Aux antenna placements (measurements are not required for receive-only antenna).

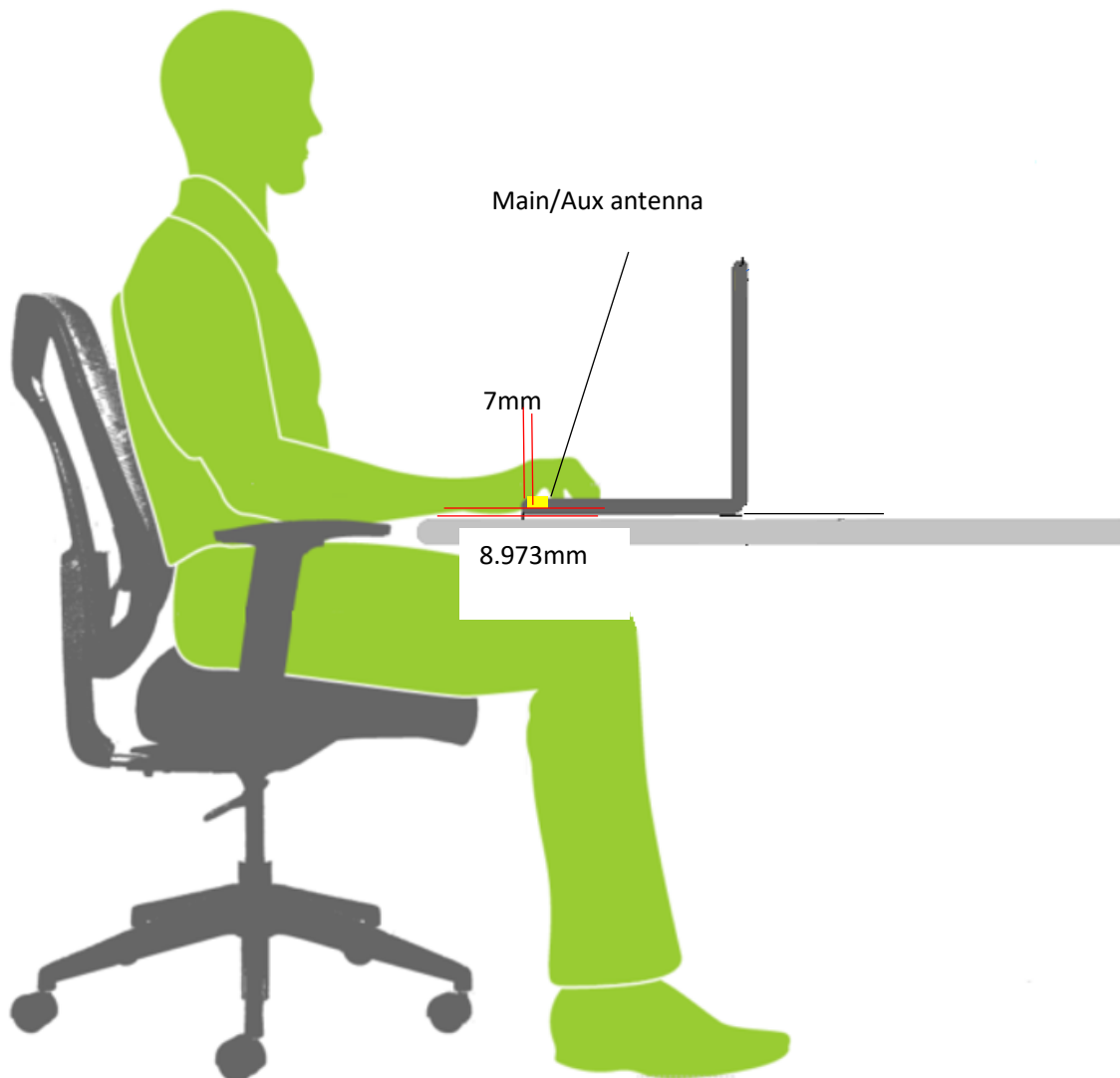
Any antenna that transmits must show dimensions to bottom of laptop. Provide a description of the materials that are used for supporting or surrounding transmit antennas; for example, non-conductive plastics vs. conductive coated plastic or metallic materials.



B.2 Antenna dimensional information for SAR evaluation

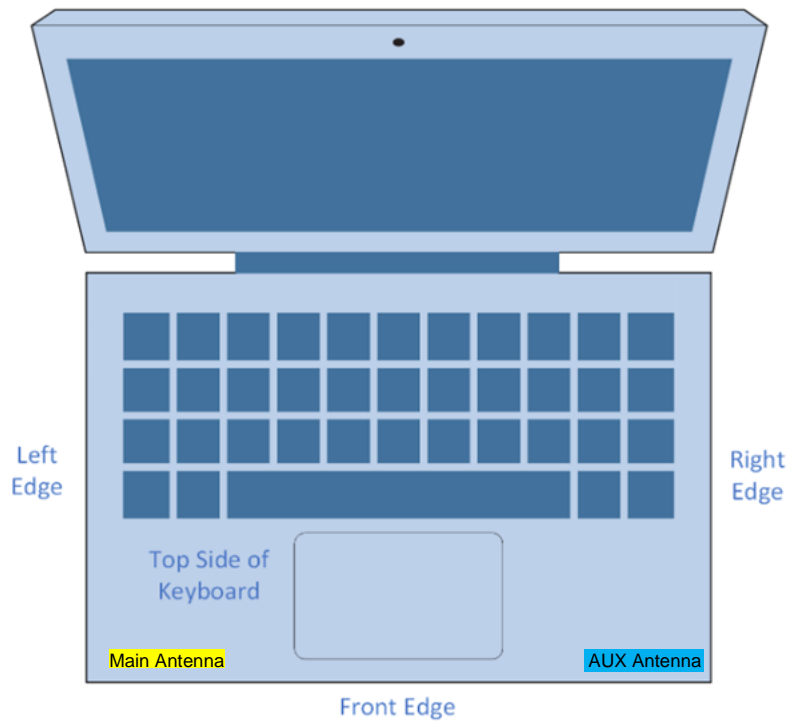
Include a dimensioned photo(s) or dimensioned drawing(s) showing the distance (mm) between the transmit antennas and the user. For notebook/laptop hosts show lapheld position (example below). For tablet hosts show all orientations including lapheld, primary & secondary portrait, primary & secondary landscape positions. Include a description of any proximity sensors or power throttling implementations that limit or exclude use of any host orientation.

Antennas on the panel section



Surfacing Surface	Antenna	Separation Distance(antenna-to- Surface)(mm)	1g SAR
Bottom Side	Main	8.973	FCC/ISED
	Aux	8.973	FCC/ISED

Antennas on the keyboard section



Measuring Surface	Antenna	Separation Distance(antenna-to-Surface)(mm)	1g or 10g SAR
Bottom Side	Main	8.973	1g (FCC/ISED)
	Aux	8.973	1g (FCC/ISED)
Front Edge	Main	7.0	1g (ISED)
	Aux	7.0	1g (ISED)
Left Edge	Main	16.0	10g (ISED)
	Aux	298.6	10g (ISED)
Right Edge	Main	306.0	10g (ISED)
	Aux	18.4	10g (ISED)
Top side of Keyboard	Main	1.9	10g (ISED)
	Aux	1.9	10g (ISED)