

#01_WLAN2.4GHz_802.11b 1Mbps_Edge 1_0mm_Ch1;Ant1

Communication System: 802.11b ; Frequency: 2412 MHz;Duty Cycle: 1:1

Medium: MSL_2450_180831 Medium parameters used: $f = 2412$ MHz; $\sigma = 1.922$ S/m; $\epsilon_r = 52.292$; $\rho = 1000$ kg/m³

Ambient Temperature : 23.5 °C ; Liquid Temperature : 22.5 °C

DASY5 Configuration:

- Probe: ES3DV3 - SN3270; ConvF(4.39, 4.39, 4.39); Calibrated: 2017/9/25
- Sensor-Surface: 3mm (Mechanical Surface Detection)
- Electronics: DAE4 Sn917; Calibrated: 2017/12/14
- Phantom: ELI v4.0; Type: QDOVA001BB; Serial: 1164
- Measurement SW: DASY52, Version 52.10 (1);SEMCAD X Version 14.6.11 (7439)

Area Scan (51x101x1): Interpolated grid: dx=1.200 mm, dy=1.200 mm

Maximum value of SAR (interpolated) = 0.259 W/kg

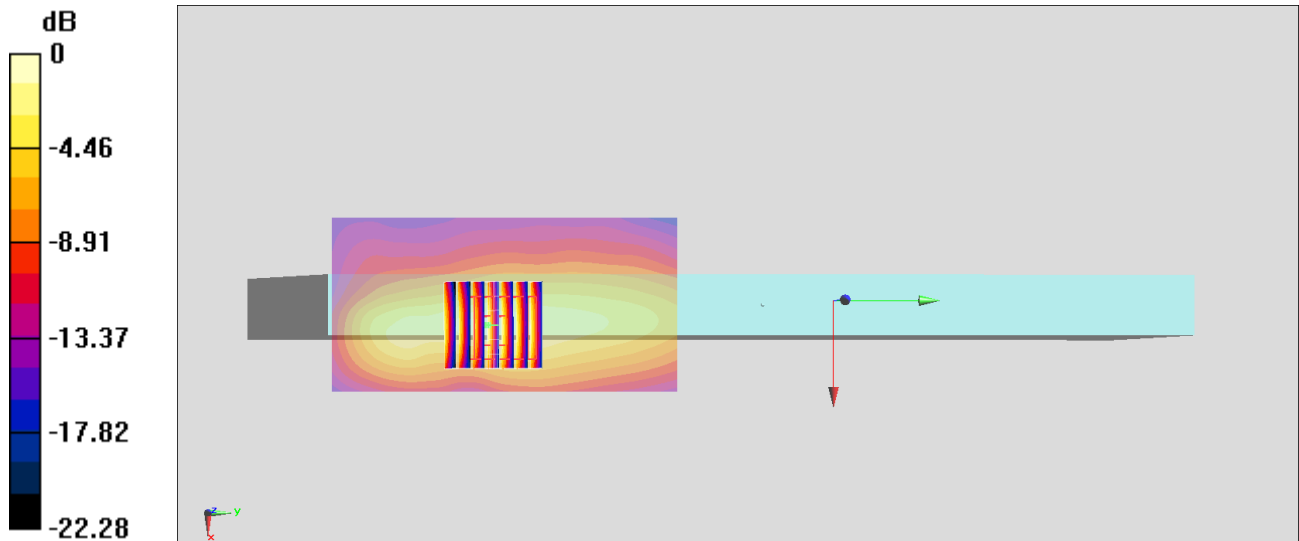
Zoom Scan (7x7x7)/Cube 0: Measurement grid: dx=5mm, dy=5mm, dz=5mm

Reference Value = 9.339 V/m; Power Drift = -0.04 dB

Peak SAR (extrapolated) = 0.466 W/kg

SAR(1 g) = 0.216 W/kg; SAR(10 g) = 0.100 W/kg

Maximum value of SAR (measured) = 0.281 W/kg



0 dB = 0.281 W/kg = -5.51 dBW/kg

#02_WLAN5GHz_802.11a 6Mbps_Edge 1_0mm_Ch60;Ant 2

Communication System: 802.11a ; Frequency: 5300 MHz;Duty Cycle: 1:1

Medium: MSL_5G_180827 Medium parameters used : $f = 5300$ MHz; $\sigma = 5.499$ S/m; $\epsilon_r = 47.305$; $\rho = 1000$ kg/m³

Ambient Temperature : 23.6 °C ; Liquid Temperature : 22.6 °C

DASY5 Configuration:

- Probe: EX3DV4 - SN3976; ConvF(4.92, 4.92, 4.92); Calibrated: 2018/1/23
- Sensor-Surface: 1.4mm (Mechanical Surface Detection)
- Electronics: DAE4 Sn1424; Calibrated: 2018/1/18
- Phantom: ELI v5.0; Type: QDOVA002AA; Serial: 1131
- Measurement SW: DASY52, Version 52.10 (1);SEMCAD X Version 14.6.11 (7439)

Area Scan (81x141x1): Interpolated grid: dx=1.000 mm, dy=1.000 mm

Maximum value of SAR (interpolated) = 1.68 W/kg

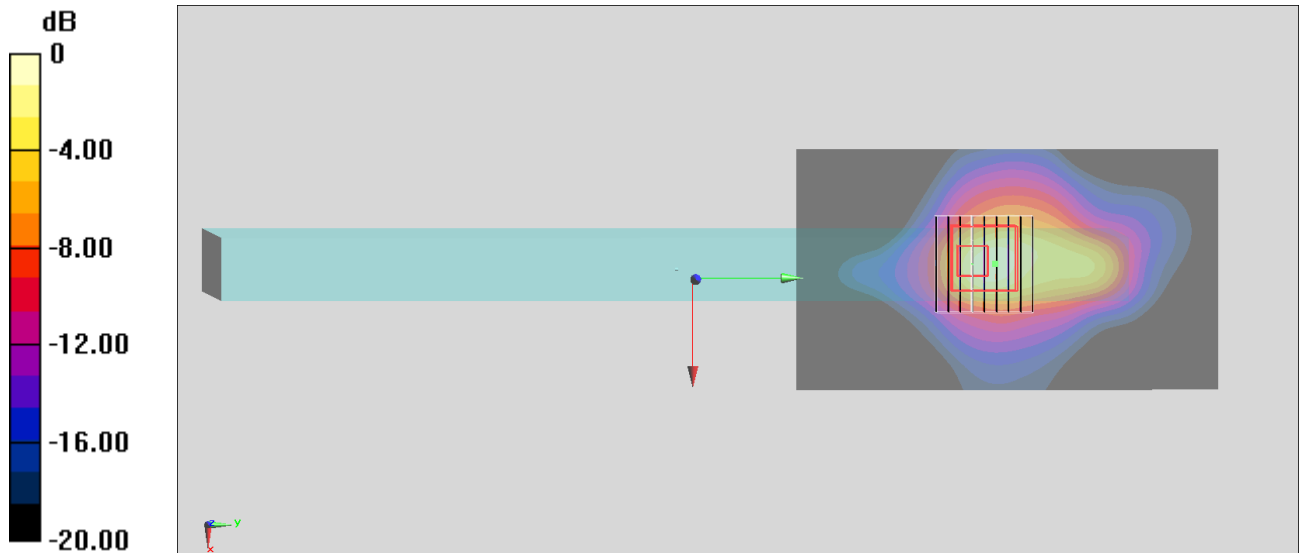
Zoom Scan (9x9x7)/Cube 0: Measurement grid: dx=4mm, dy=4mm, dz=1.4mm

Reference Value = 14.93 V/m; Power Drift = 0.12 dB

Peak SAR (extrapolated) = 3.02 W/kg

SAR(1 g) = 0.647 W/kg; SAR(10 g) = 0.202 W/kg

Maximum value of SAR (measured) = 1.67 W/kg



0 dB = 1.68 W/kg = 2.25 dBW/kg

#03_WLAN5GHz_802.11a 6Mbps_Edge 1_0mm_Ch116;Ant 1

Communication System: 802.11a; Frequency: 5580 MHz; Duty Cycle: 1:1

Medium: MSL_5G_180827 Medium parameters used: $f = 5580$ MHz; $\sigma = 5.851$ S/m; $\epsilon_r = 46.864$; $\rho = 1000$ kg/m³

Ambient Temperature : 23.6 °C ; Liquid Temperature : 22.6 °C

DASY5 Configuration:

- Probe: EX3DV4 - SN3976; ConvF(4.28, 4.28, 4.28); Calibrated: 2018/1/23
- Sensor-Surface: 1.4mm (Mechanical Surface Detection)
- Electronics: DAE4 Sn1424; Calibrated: 2018/1/18
- Phantom: ELI v5.0; Type: QDOVA002AA; Serial: 1131
- Measurement SW: DASY52, Version 52.10 (1); SEMCAD X Version 14.6.11 (7439)

Area Scan (81x161x1): Interpolated grid: dx=1.000 mm, dy=1.000 mm

Maximum value of SAR (interpolated) = 1.57 W/kg

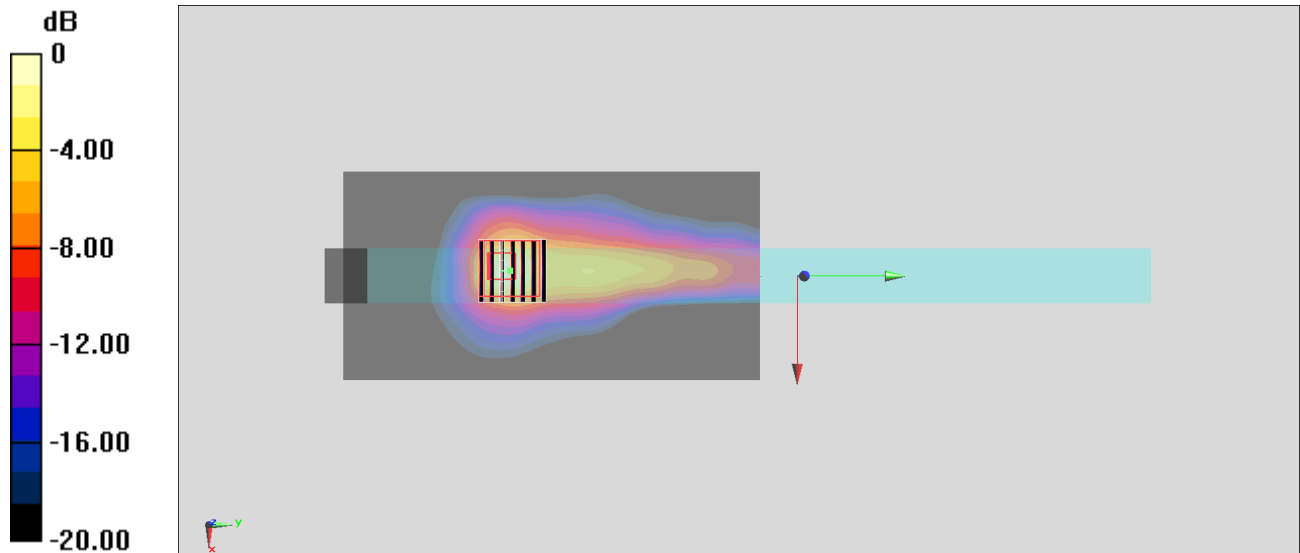
Zoom Scan (7x7x7)/Cube 0: Measurement grid: dx=4mm, dy=4mm, dz=1.4mm

Reference Value = 16.37 V/m; Power Drift = 0.11 dB

Peak SAR (extrapolated) = 3.07 W/kg

SAR(1 g) = 0.650 W/kg; SAR(10 g) = 0.177 W/kg

Maximum value of SAR (measured) = 1.64 W/kg



0 dB = 1.64 W/kg = 2.15 dBW/kg

#04_WLAN5GHz_802.11a 6Mbps_Edge 1_0mm_Ch157;Ant 1

Communication System: 802.11a; Frequency: 5785 MHz; Duty Cycle: 1:1

Medium: MSL_5G_180827 Medium parameters used : $f = 5785$ MHz; $\sigma = 6.133$ S/m; $\epsilon_r = 46.539$; $\rho = 1000$ kg/m³

Ambient Temperature : 23.6 °C; Liquid Temperature : 22.6 °C

DASY5 Configuration:

- Probe: EX3DV4 - SN3976; ConvF(4.46, 4.46, 4.46); Calibrated: 2018/1/23
- Sensor-Surface: 1.4mm (Mechanical Surface Detection)
- Electronics: DAE4 Sn1424; Calibrated: 2018/1/18
- Phantom: ELI v5.0; Type: QDOVA002AA; Serial: 1131
- Measurement SW: DASY52, Version 52.10 (1); SEMCAD X Version 14.6.11 (7439)

Area Scan (81x161x1): Interpolated grid: dx=1.000 mm, dy=1.000 mm

Maximum value of SAR (interpolated) = 1.53 W/kg

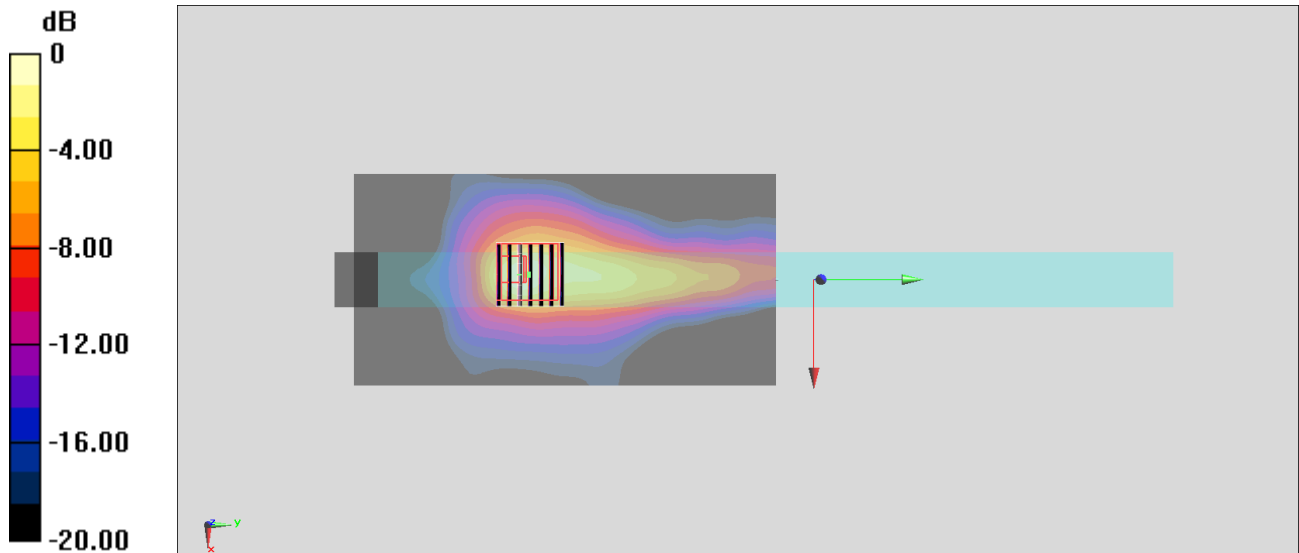
Zoom Scan (7x7x7)/Cube 0: Measurement grid: dx=4mm, dy=4mm, dz=1.4mm

Reference Value = 15.52 V/m; Power Drift = 0.11 dB

Peak SAR (extrapolated) = 3.11 W/kg

SAR(1 g) = 0.630 W/kg; SAR(10 g) = 0.169 W/kg

Maximum value of SAR (measured) = 1.52 W/kg



0 dB = 1.52 W/kg = 1.82 dBW/kg

#05_Bluetooth_1Mbps_Edge 1_0mm_Ch78;Ant 2

Communication System: Bluetooth ; Frequency: 2480 MHz;Duty Cycle: 1:1.305

Medium: MSL_2450_180905 Medium parameters used: $f = 2480$ MHz; $\sigma = 2.076$ S/m; $\epsilon_r = 53.117$; $\rho = 1000$ kg/m³

Ambient Temperature : 23.3 °C ; Liquid Temperature : 22.3 °C

DASY5 Configuration:

- Probe: ES3DV3 - SN3270; ConvF(4.39, 4.39, 4.39); Calibrated: 2017/9/25;
- Sensor-Surface: 3mm (Mechanical Surface Detection)
- Electronics: DAE4 Sn853; Calibrated: 2018/7/24
- Phantom: ELI v5.0_Right; Type: QDOVA002AA; Serial: TP:1029
- Measurement SW: DASY52, Version 52.10 (0);SEMCAD X Version 14.6.10 (7417)

Area Scan (51x111x1): Interpolated grid: dx=1.200 mm, dy=1.200 mm

Maximum value of SAR (interpolated) = 0.0213 W/kg

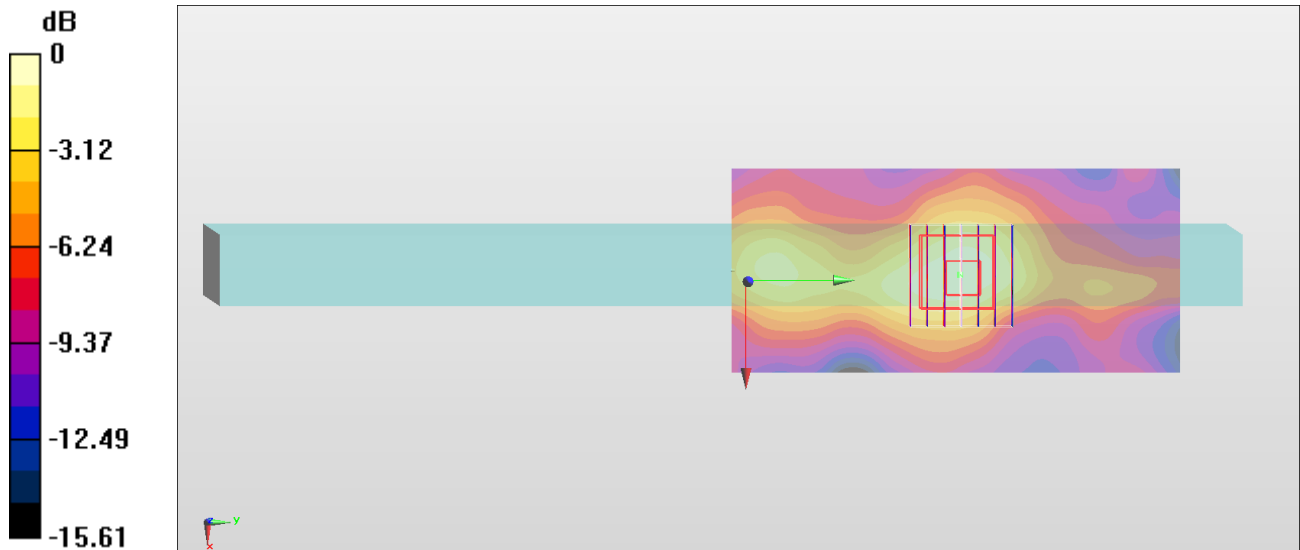
Zoom Scan (7x7x7)/Cube 0: Measurement grid: dx=5mm, dy=5mm, dz=5mm

Reference Value = 2.009 V/m; Power Drift = 0.13 dB

Peak SAR (extrapolated) = 0.0320 W/kg

SAR(1 g) = 0.017 W/kg; SAR(10 g) = 0.00951 W/kg

Maximum value of SAR (measured) = 0.0214 W/kg



0 dB = 0.0213 W/kg = -16.72 dBW/kg