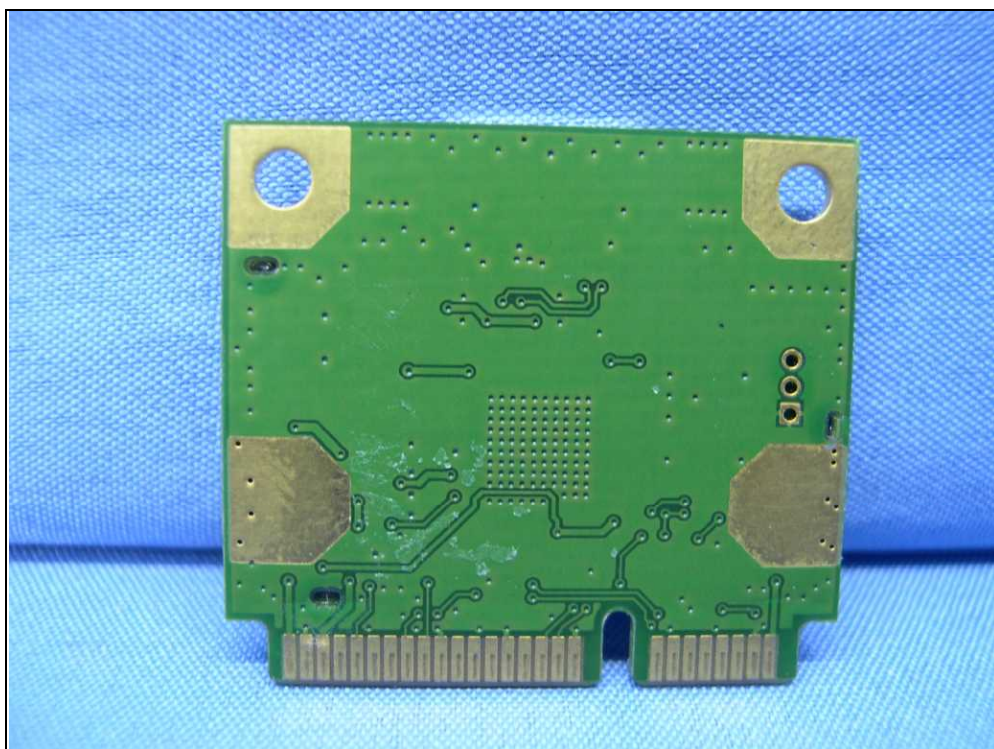
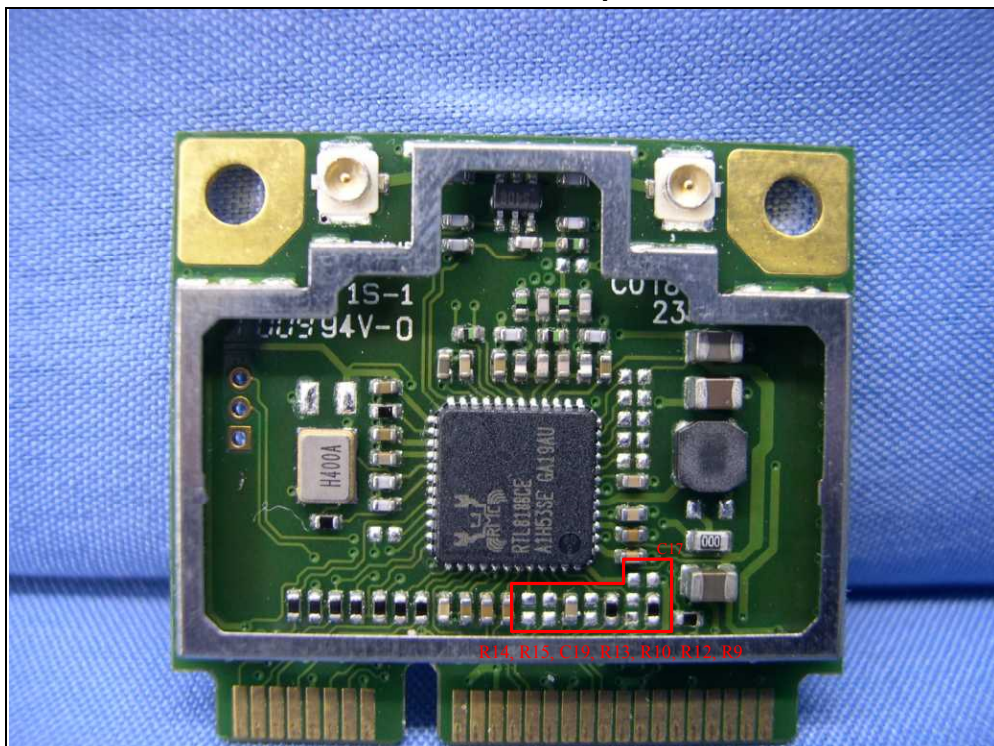
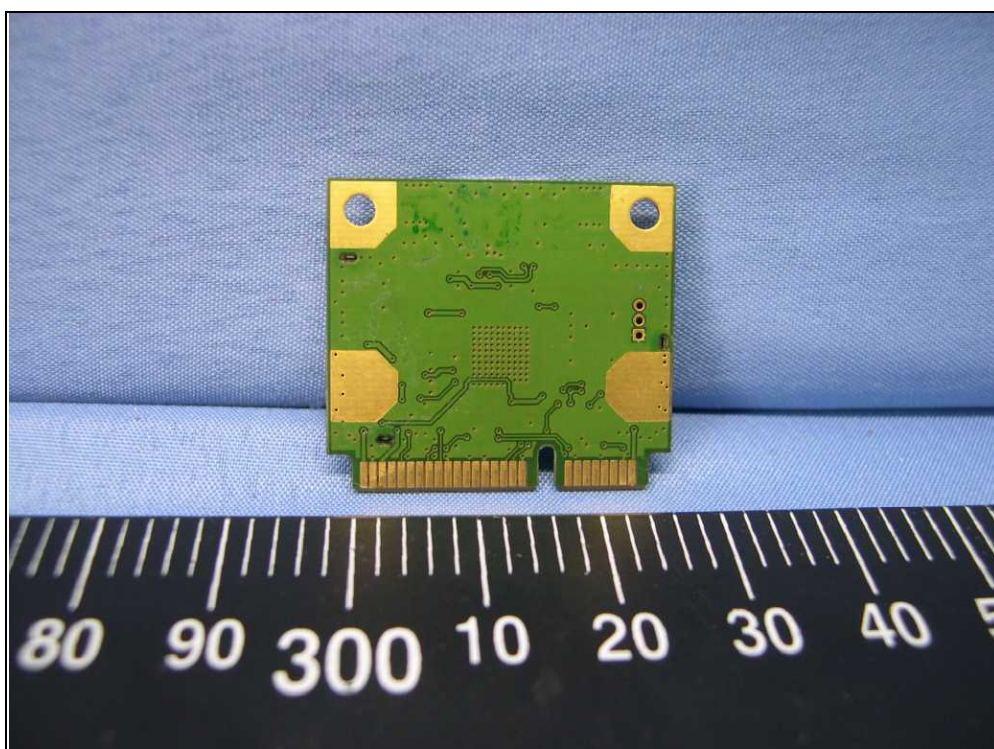
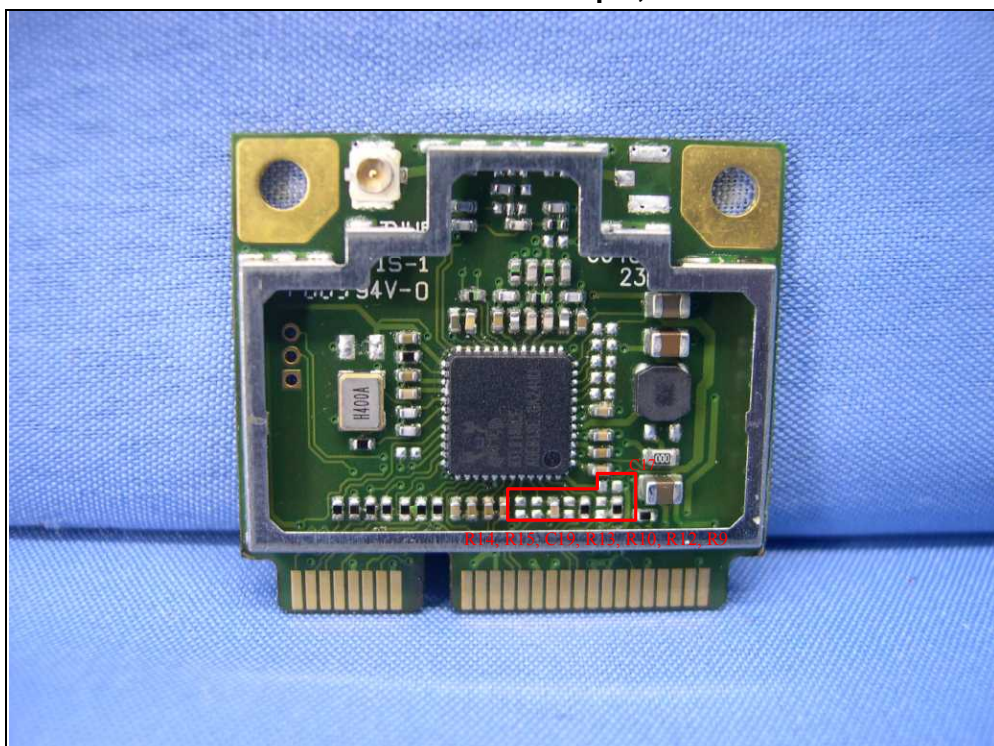


Two antenna connectors <new sample, USB Interface >

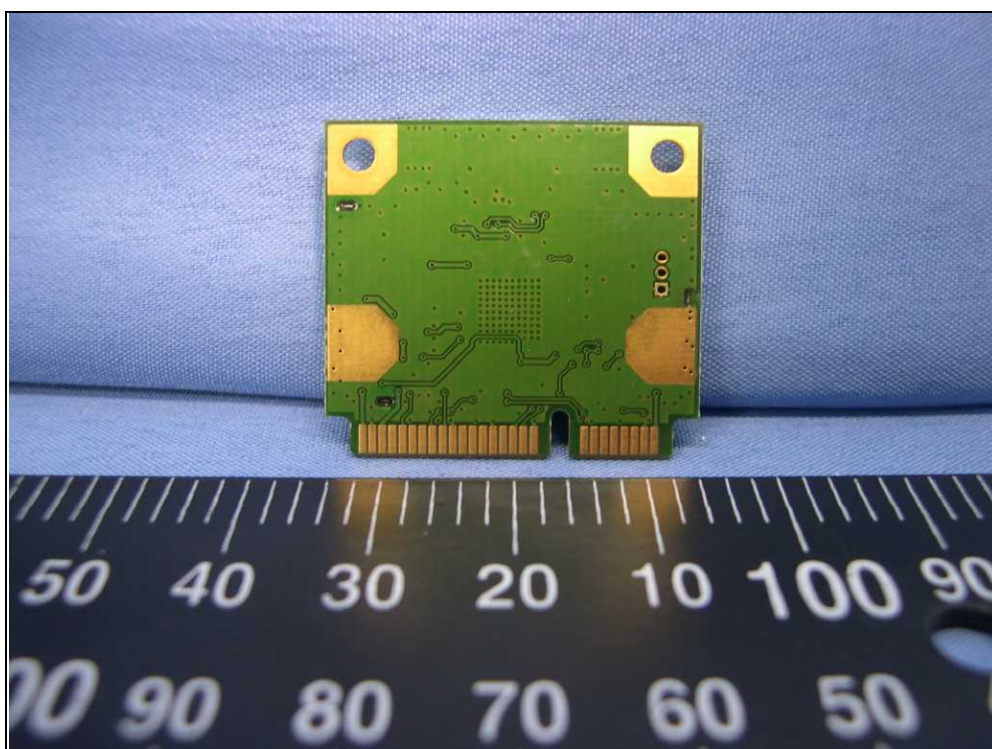
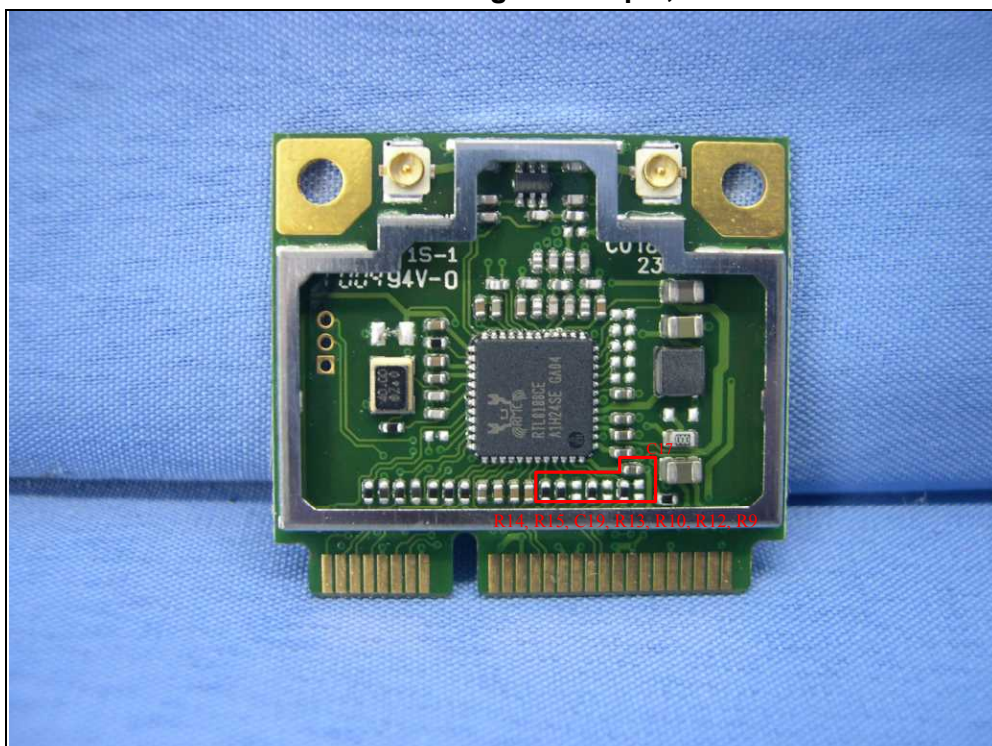




One antenna connector <new sample, USB Interface >

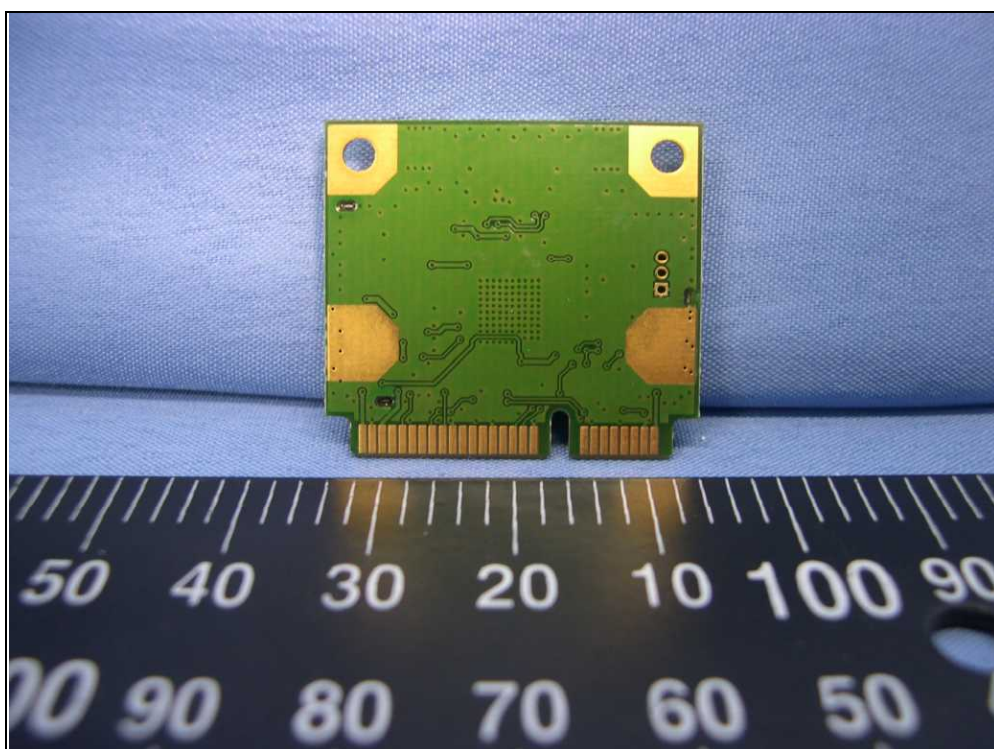
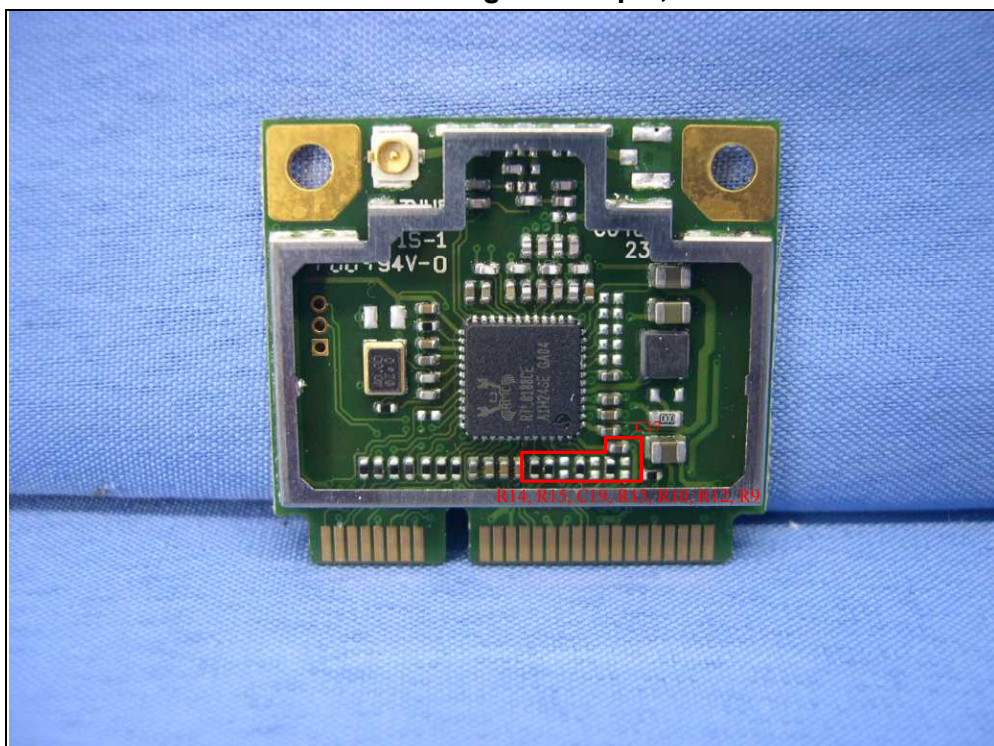


Two antenna connectors <original sample, PCIe Interface >





One antenna connector <original sample, PCIe Interface >



Antenna 111\_ 25.90A0S.001 (Main) & 25.90A0R.001 (Aux)



Antenna 111\_ 25.90A0S.001 (Main) & 25.90A0R.001 (Aux)

