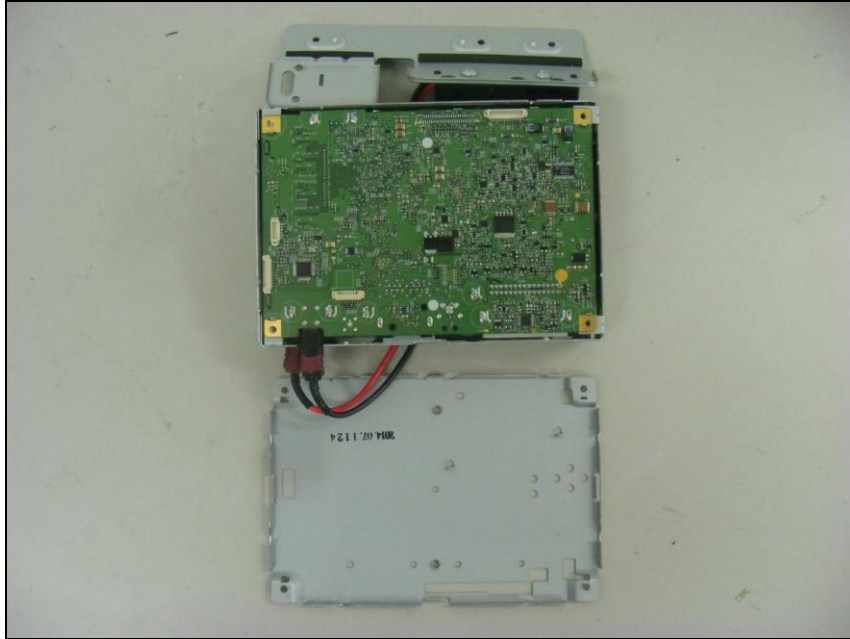
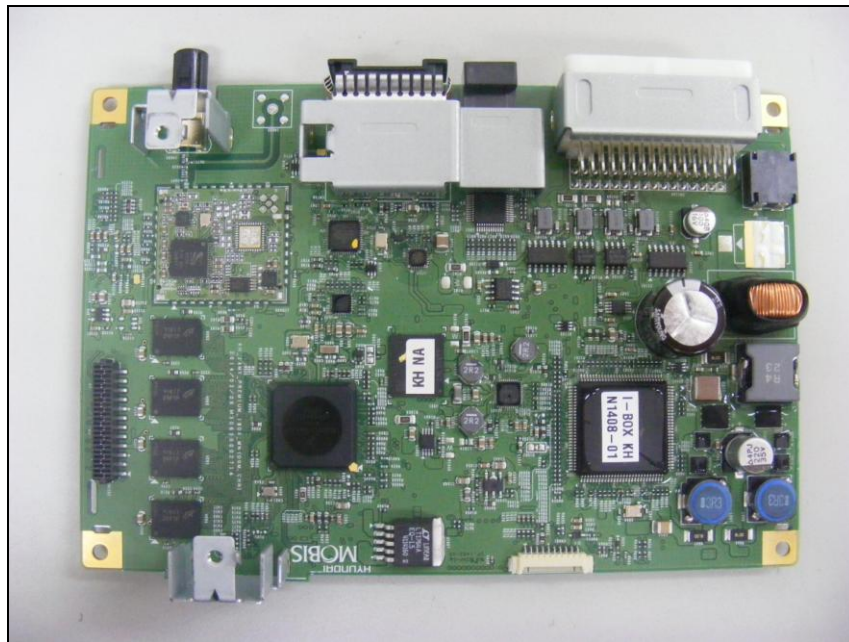


# **Internal photos of EUT**

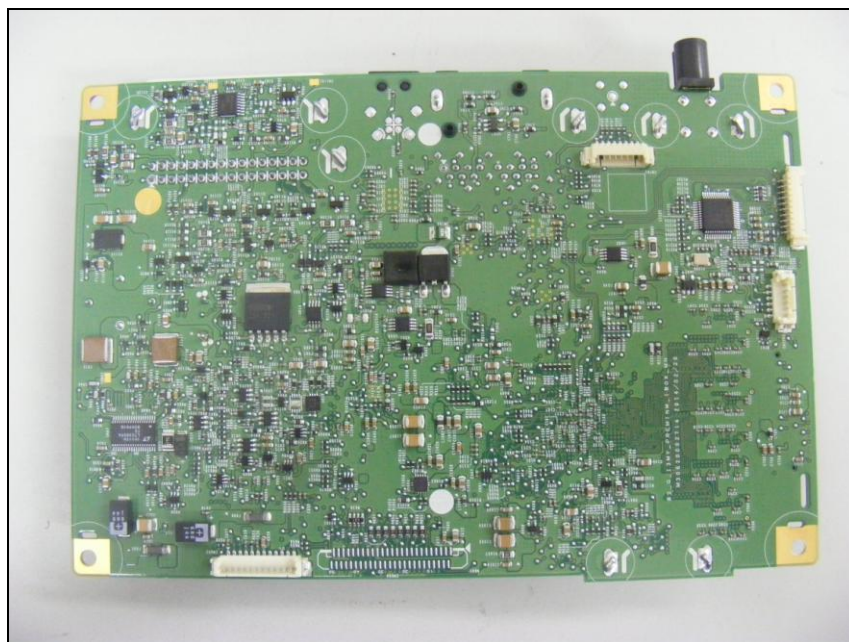
## *Inner of EUT*



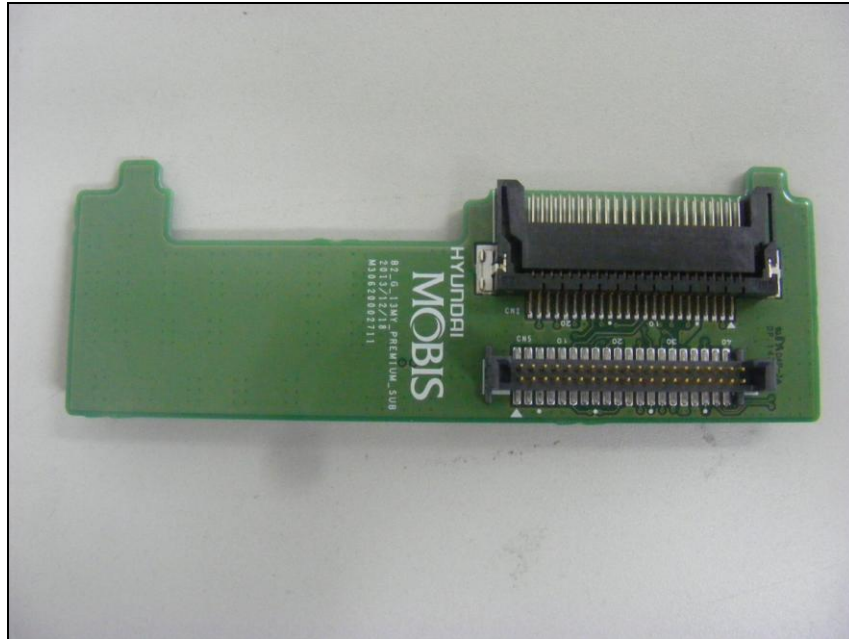
**Top view of Main PCB**



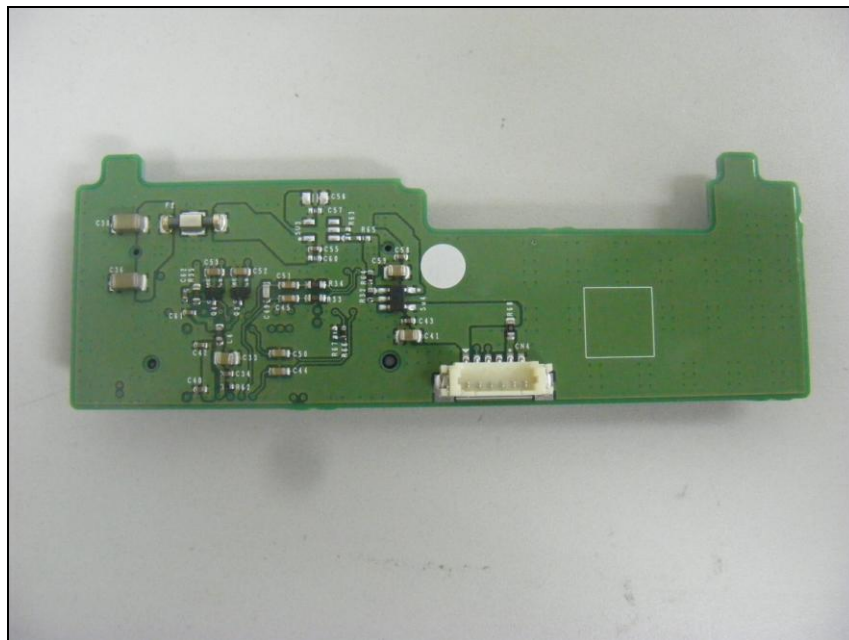
**Bottom view of Main PCB**



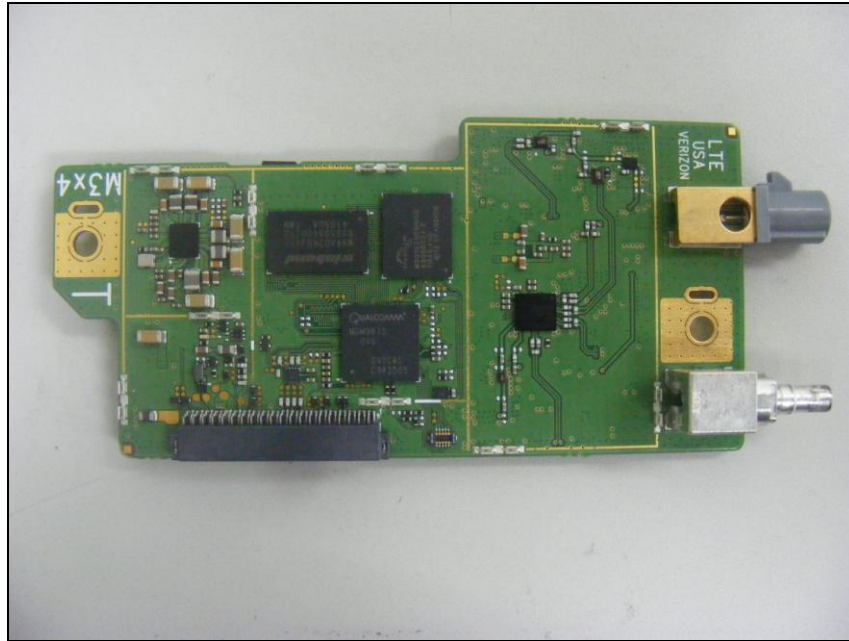
**Top view of Sub PCB**



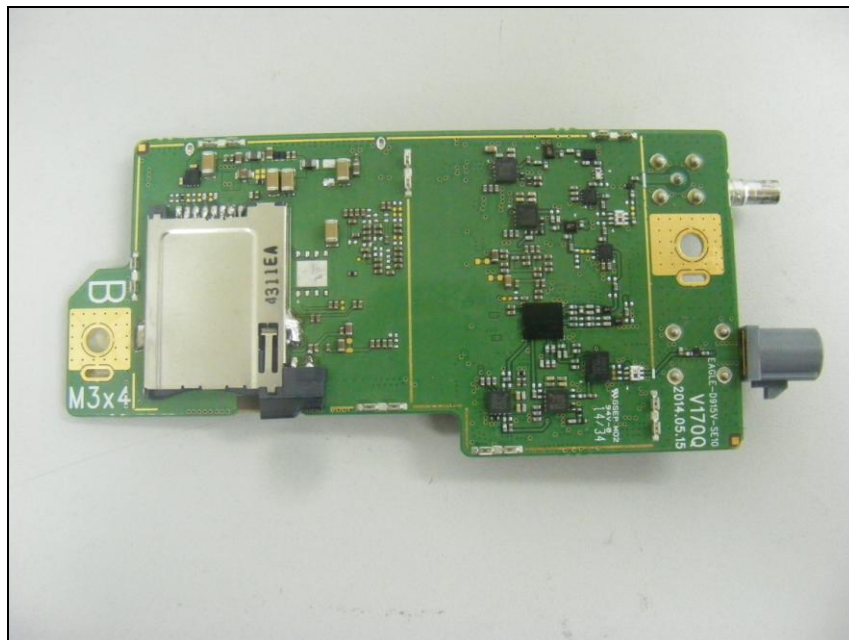
**Bottom view of Sub PCB**



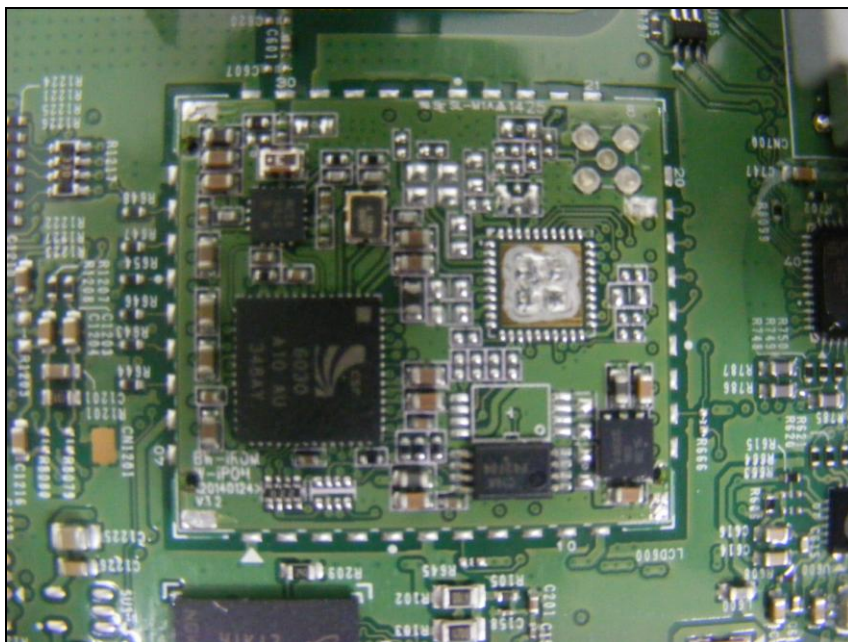
**Top view of Module1**



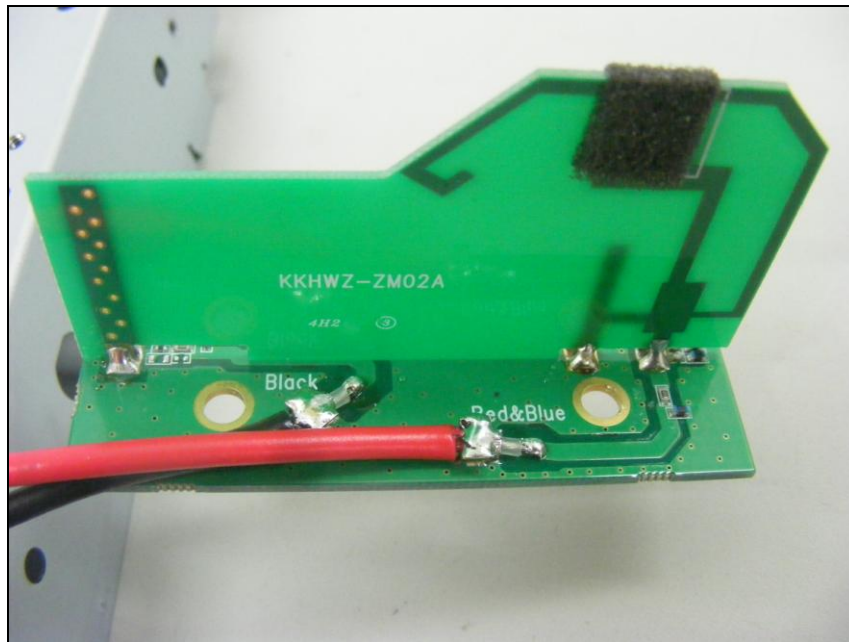
**Bottom view of Module1**







**View of WLAN / LTE Antenna**



**View of CDMA Antenna**

