

Internal photos of EUT



Top view of Main PCB1



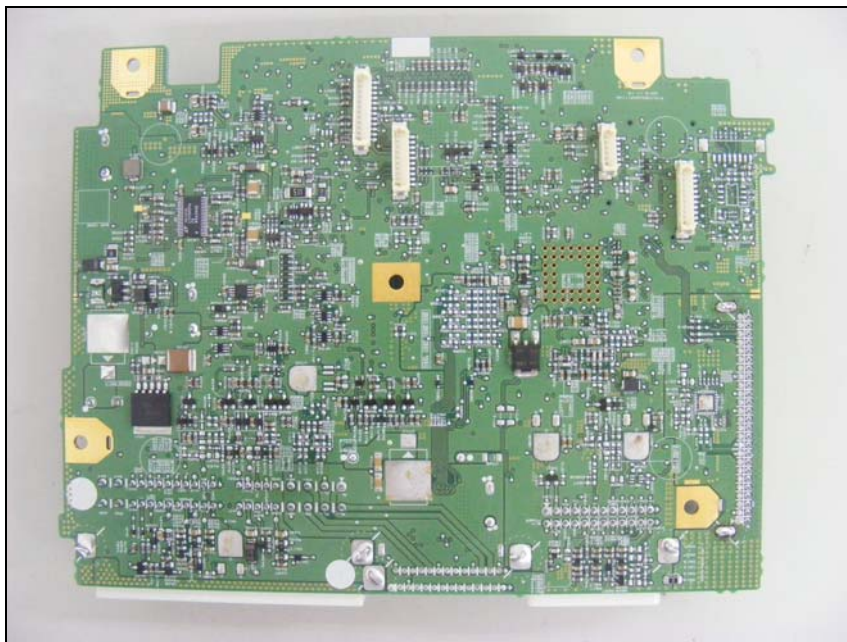
Bottom view of Main PCB1



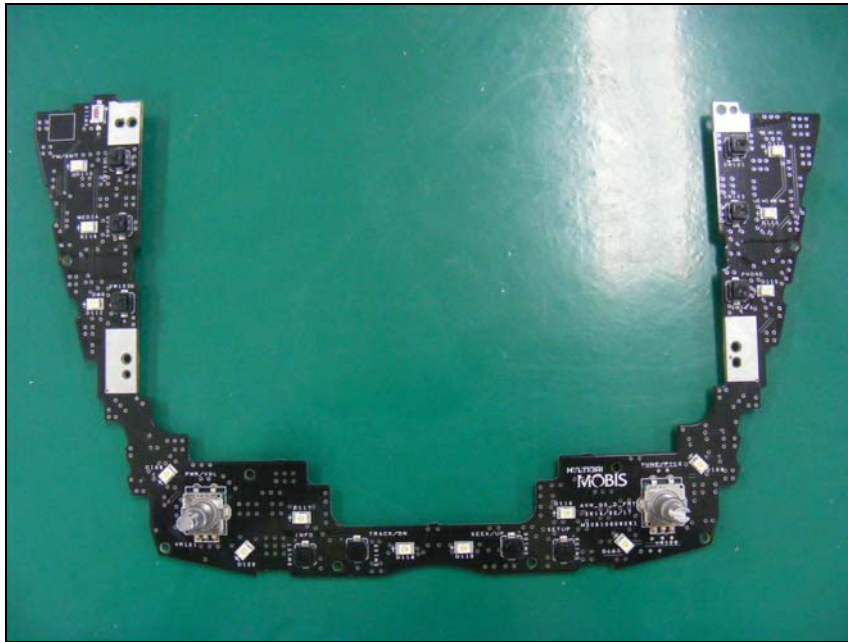
Top view of Main PCB2



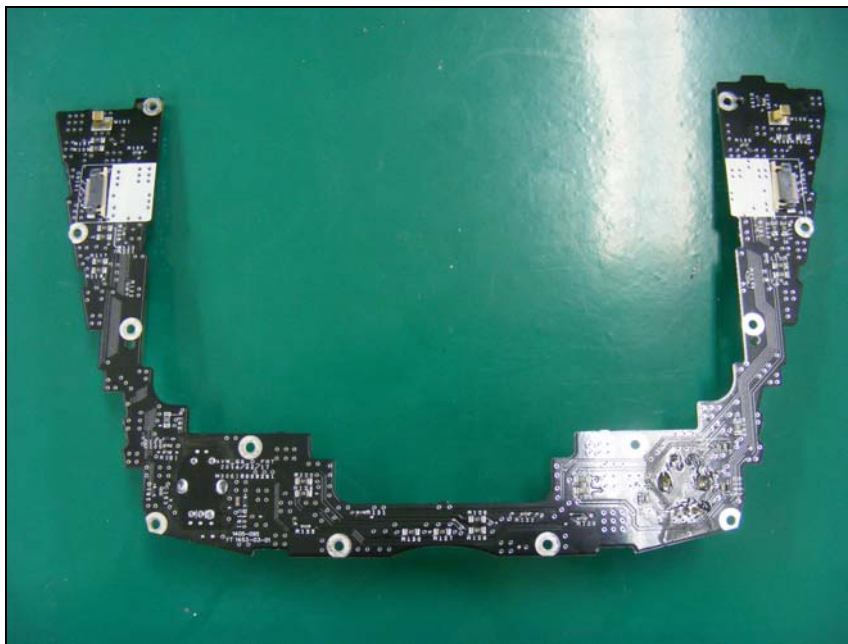
Bottom view of Main PCB2



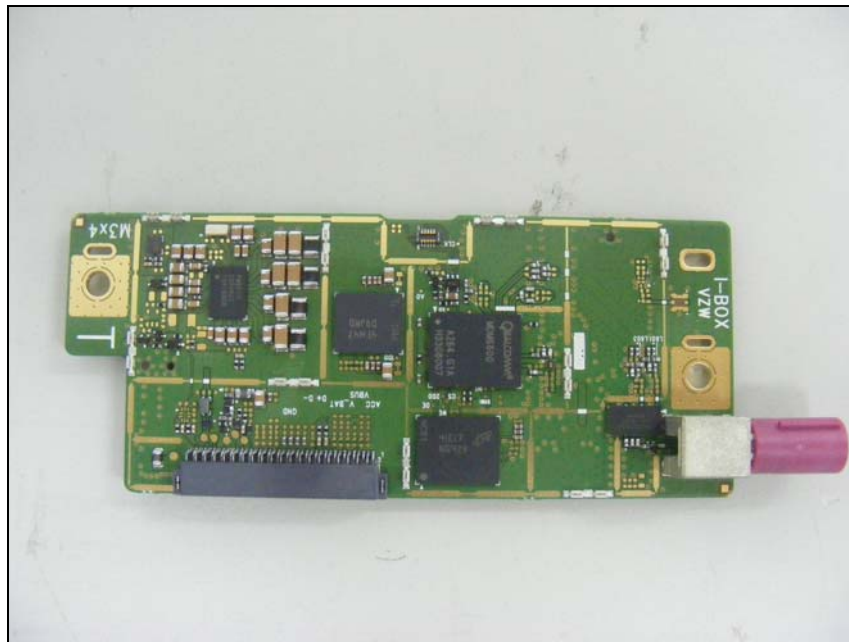
Top view of Keypad PCB



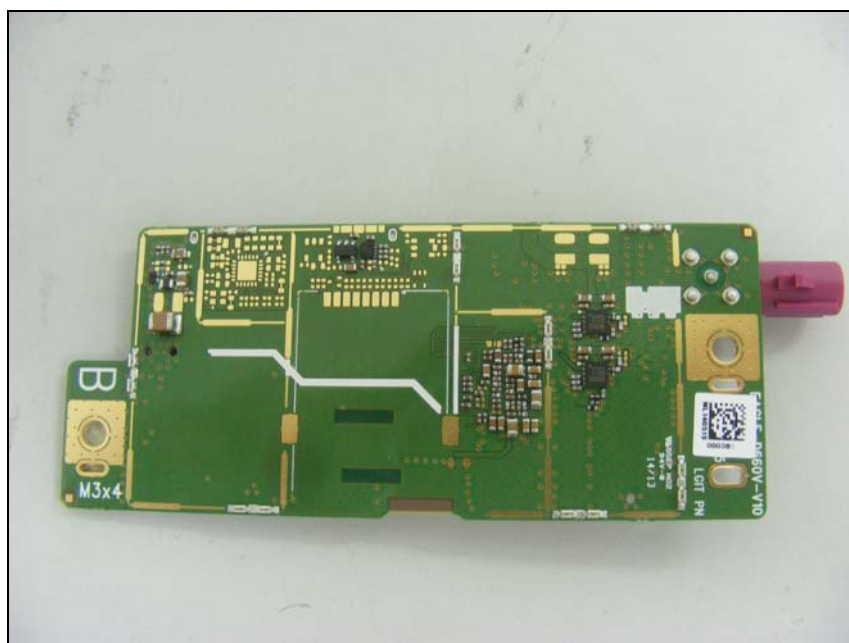
Top view of Keypad PCB



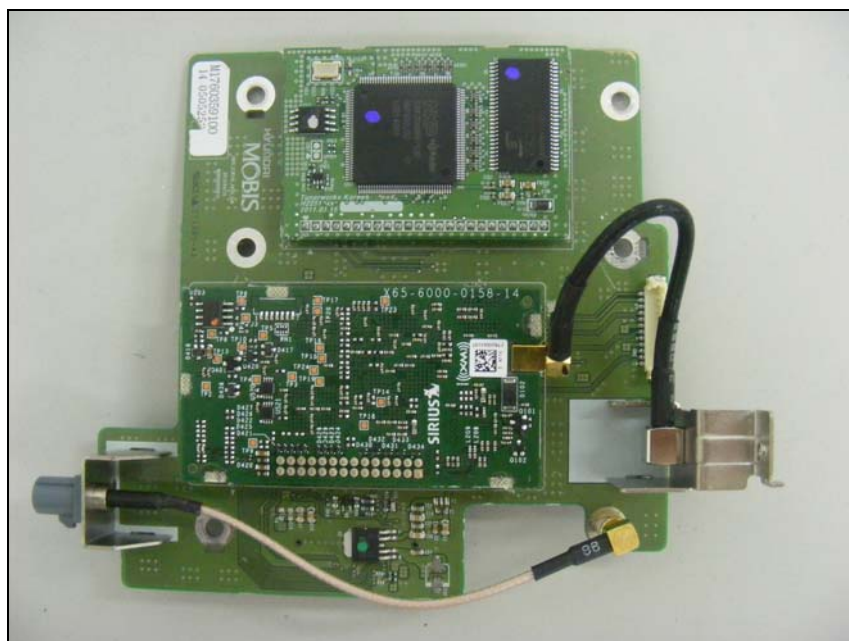
Top view of SubPCB2



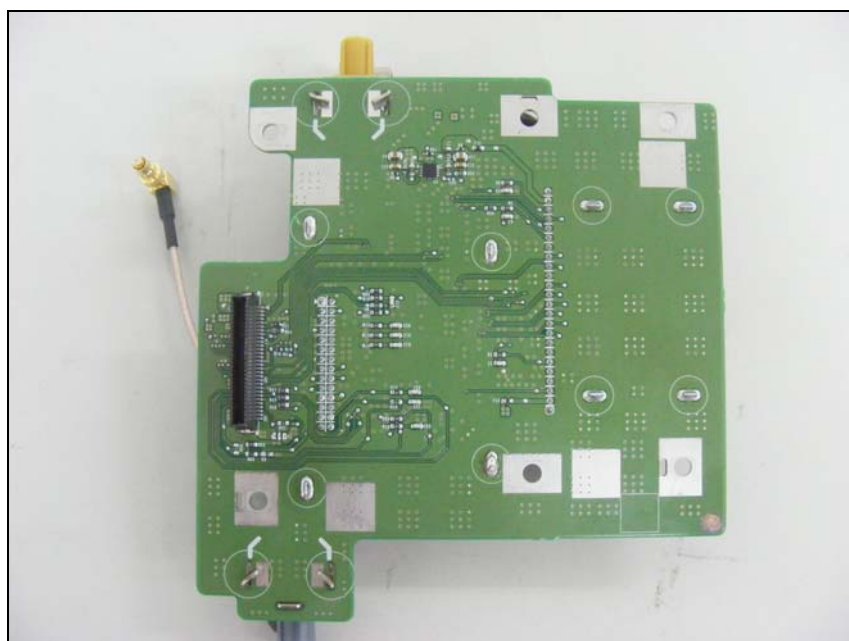
Bottom view of Sub PCB2



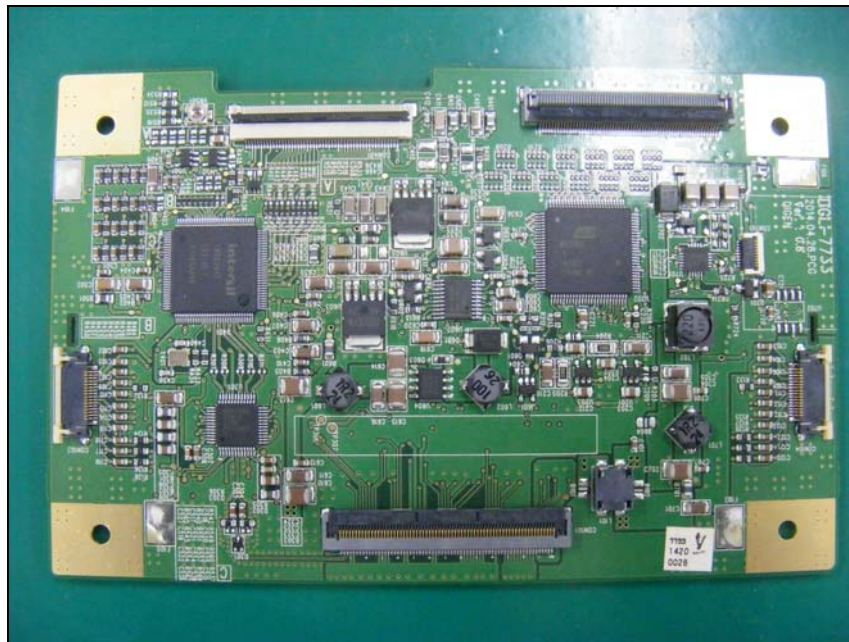
Top view of Sub PCB3



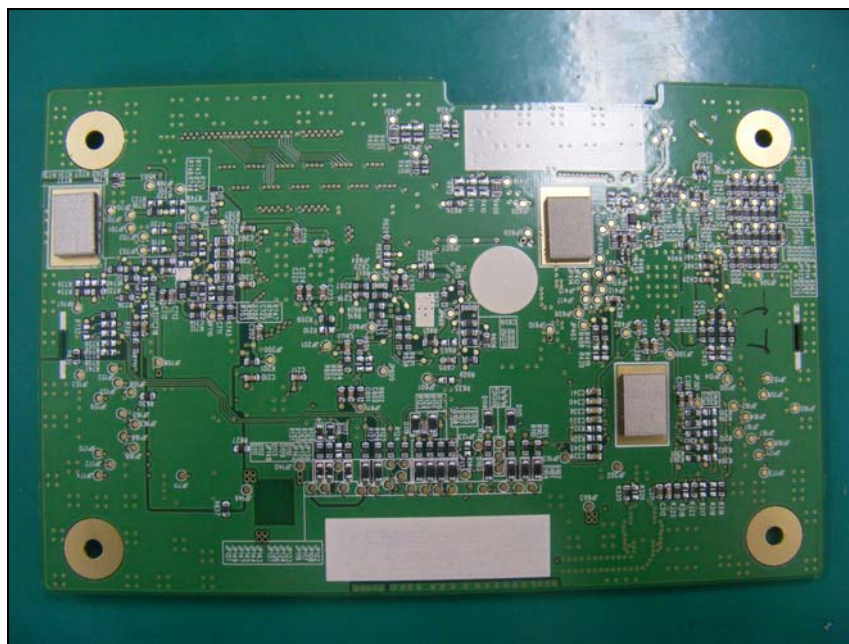
Bottom view of Sub PCB3



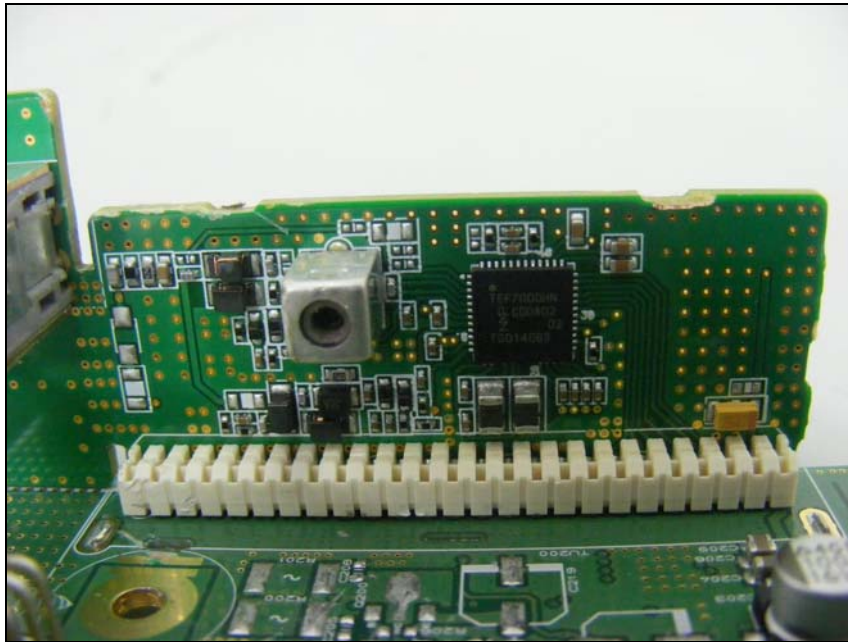
Top view of Sub PCB4



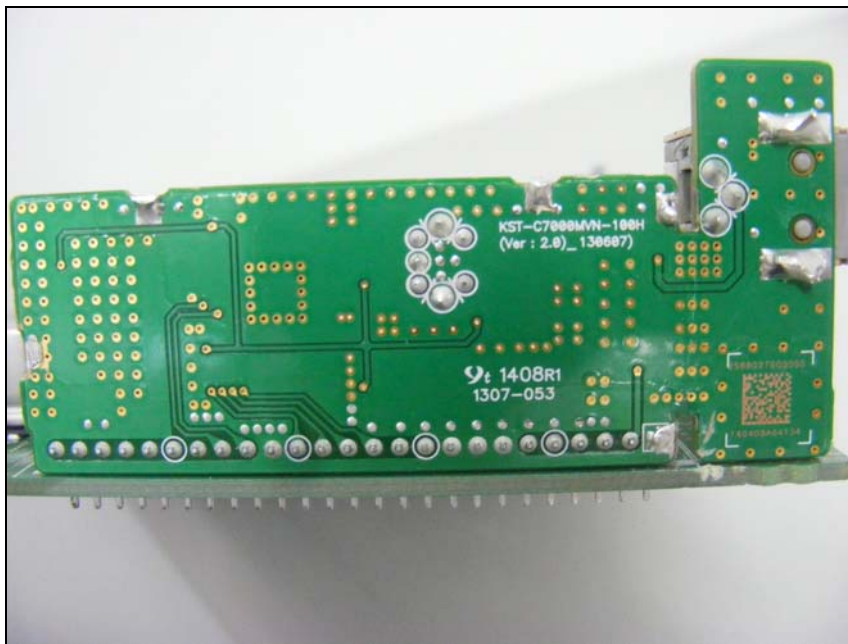
Bottom view of Sub PCB4



Top view of Sub PCB4



Bottom view of Sub PCB4



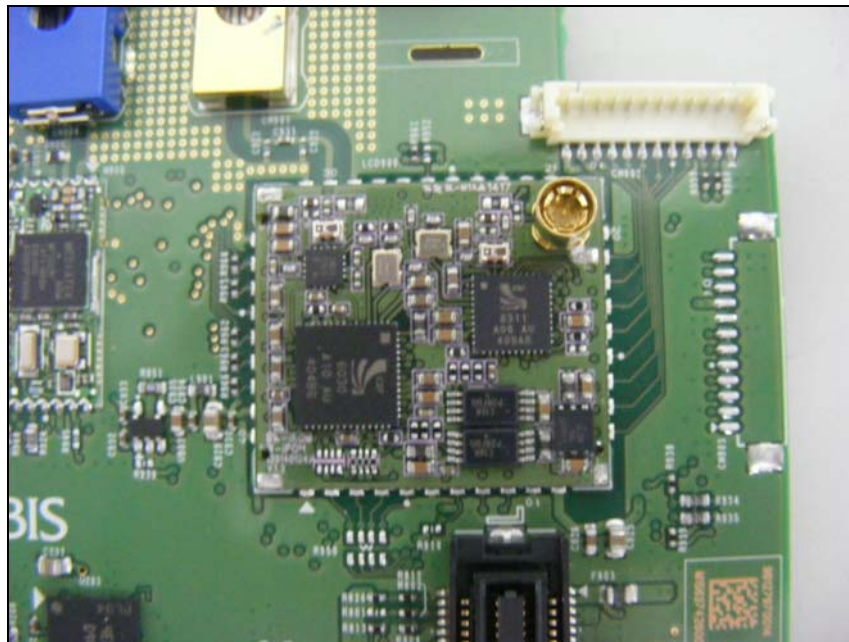
Top view of Sub LCD



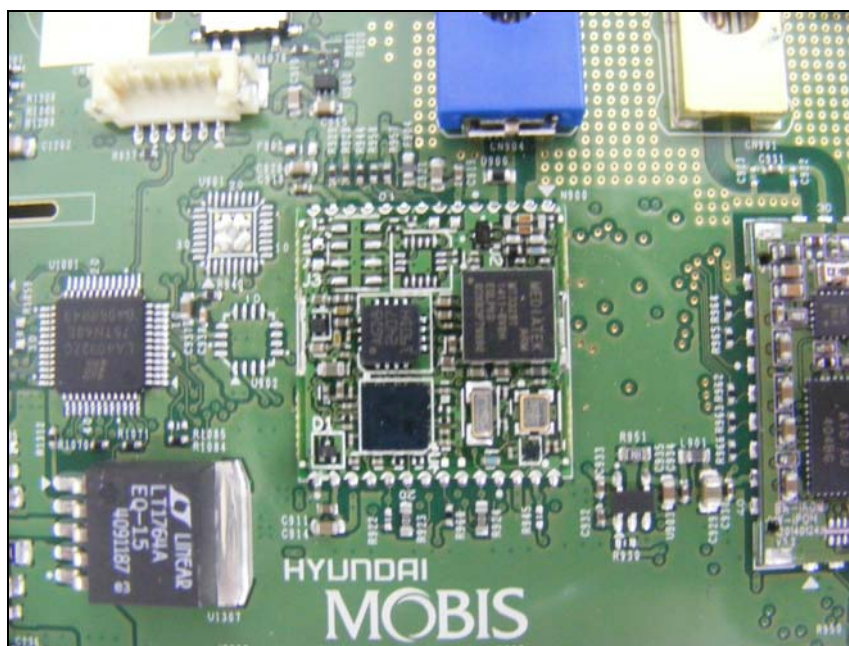
Bottom view of LCD



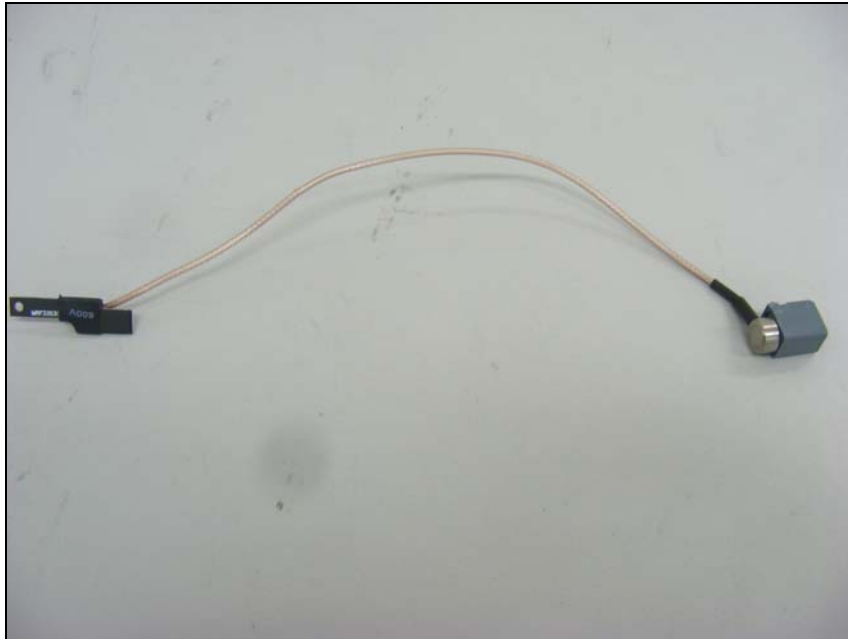
Top view of Module1



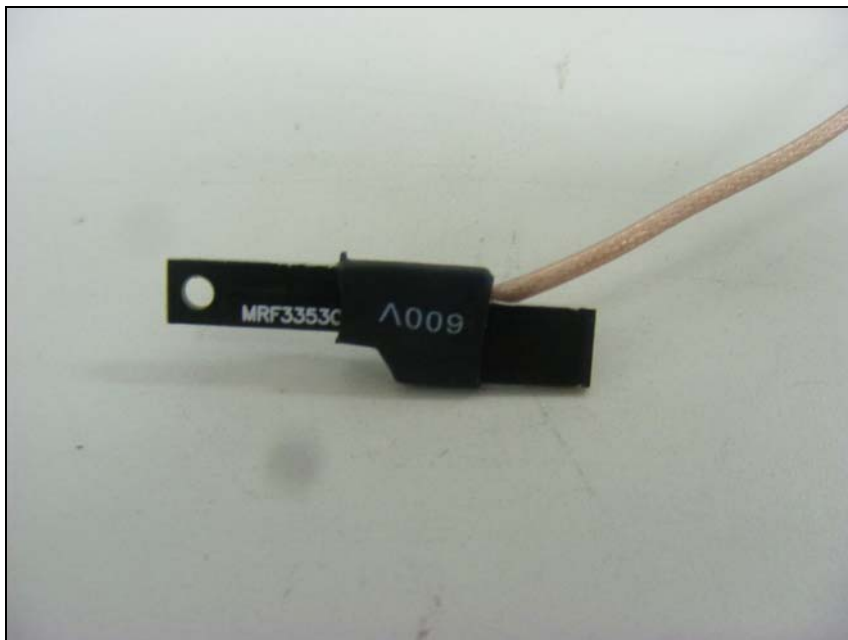
Top view of Module2



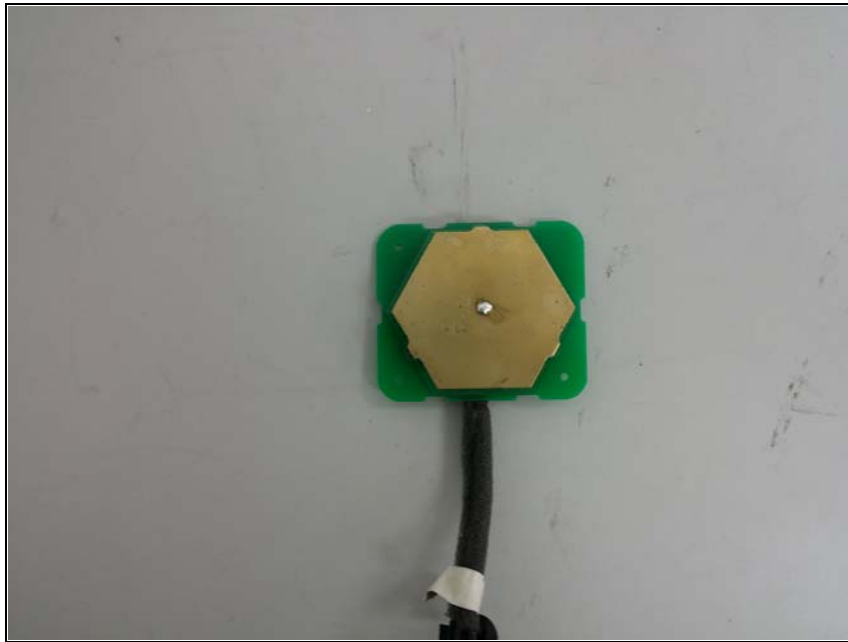
Top view of BT Antenna



Top view of BT Antenna



View of WLAN Antenna



View of CDMA Antenna

