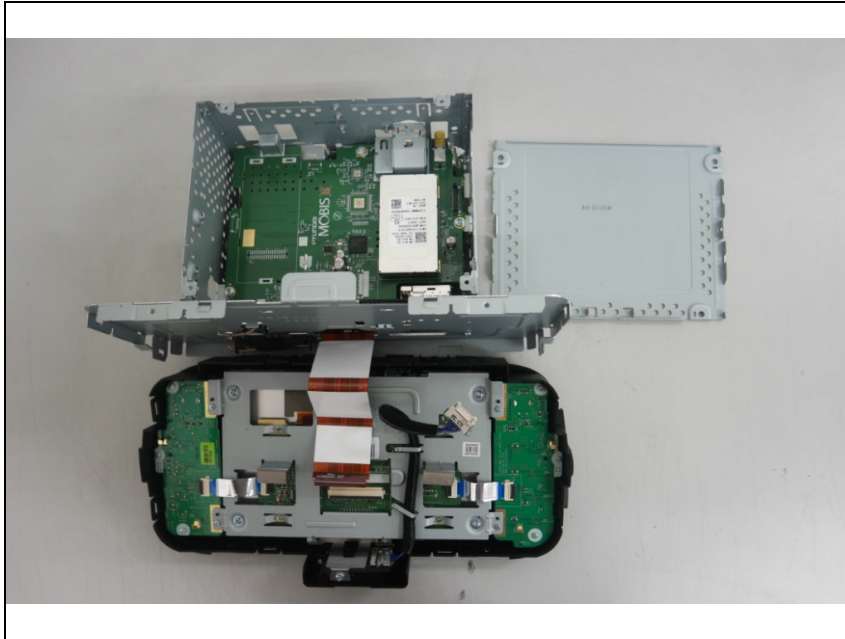


Internal photos of EUT



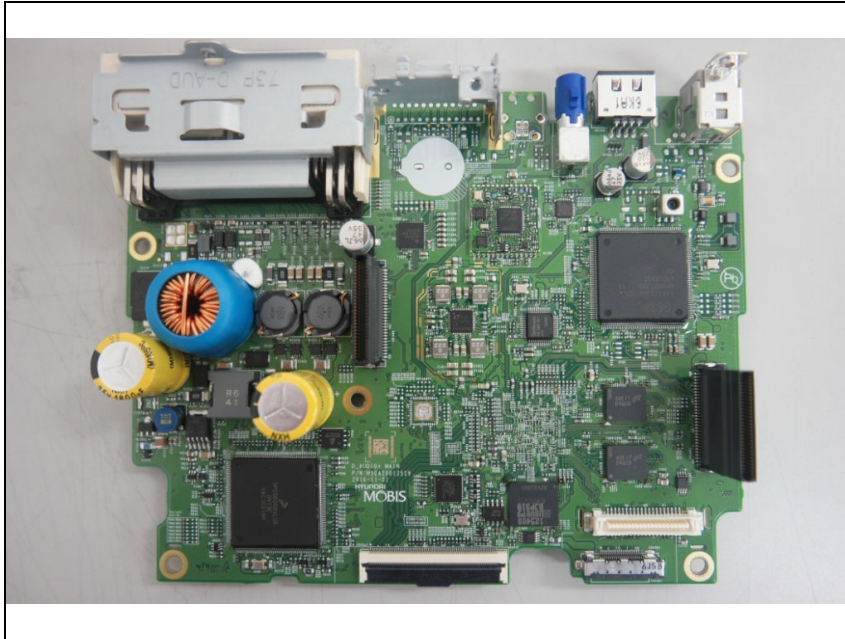
Top view of LCD



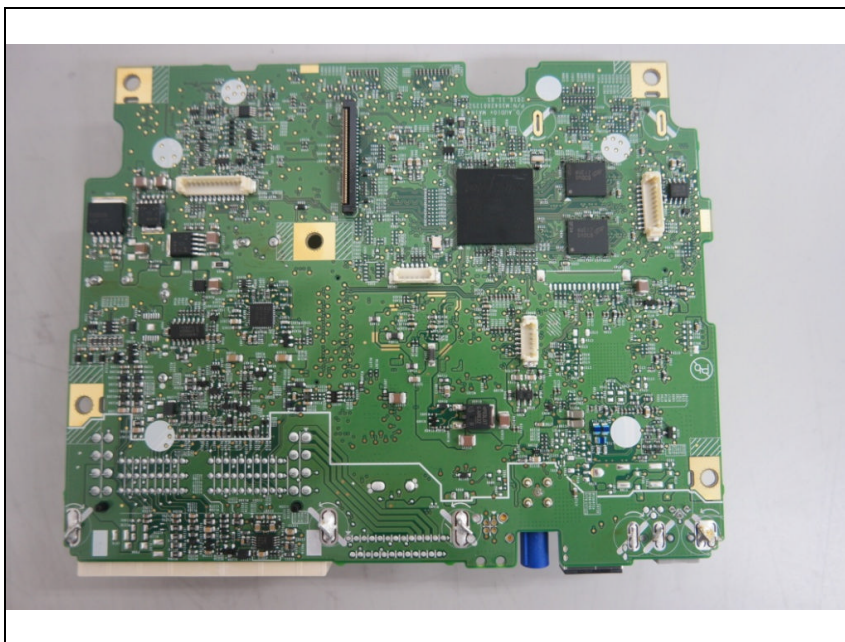
Bottom view of LCD



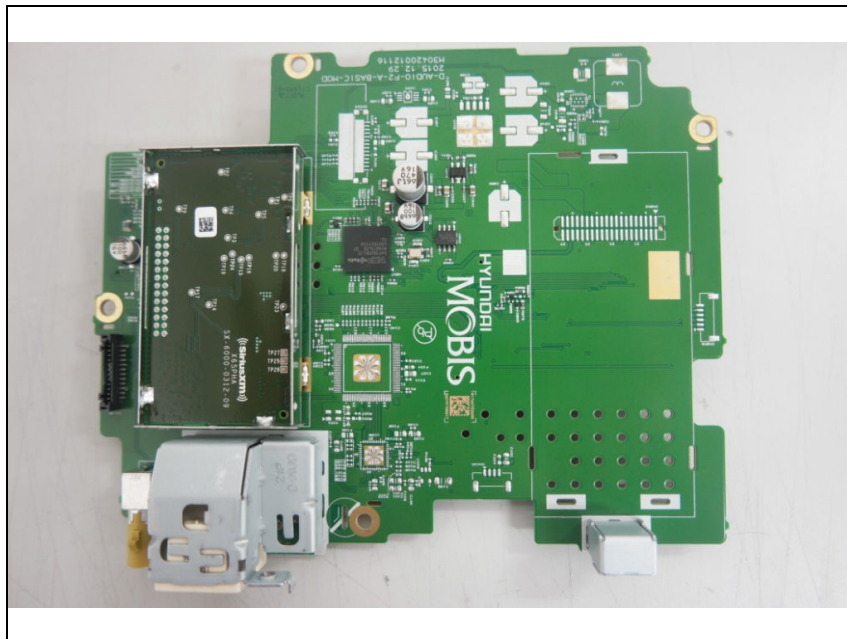
Top view of Main PCB



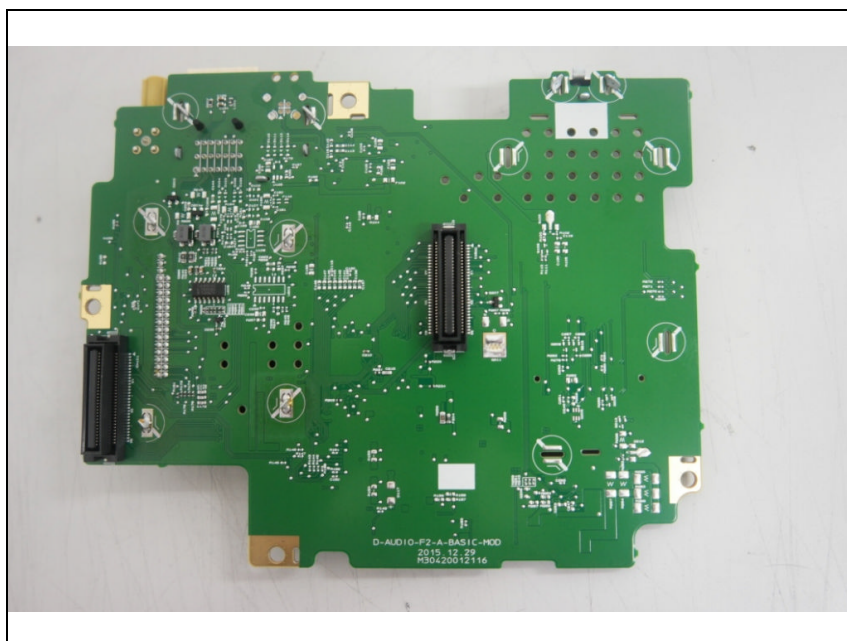
Bottom view of Main PCB



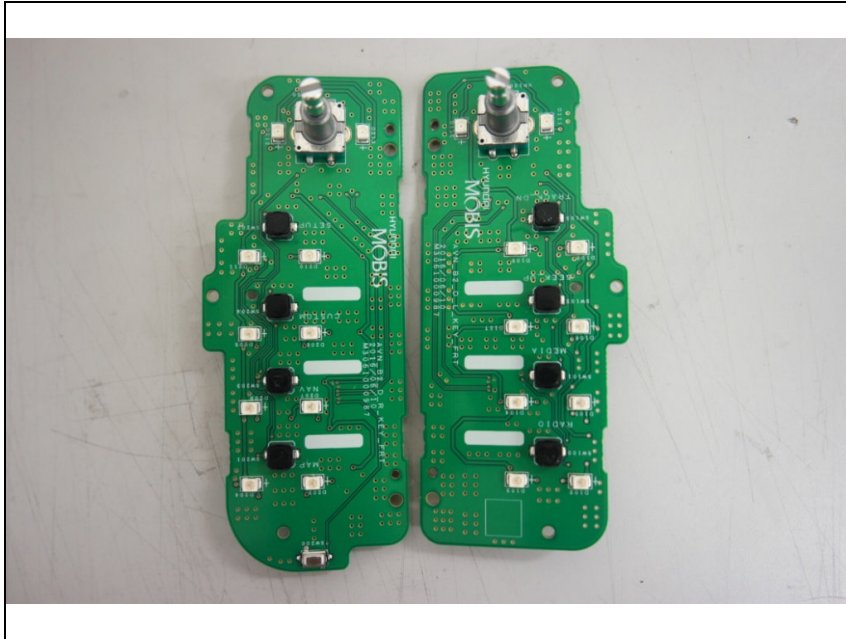
Top view of SUB PCB 1



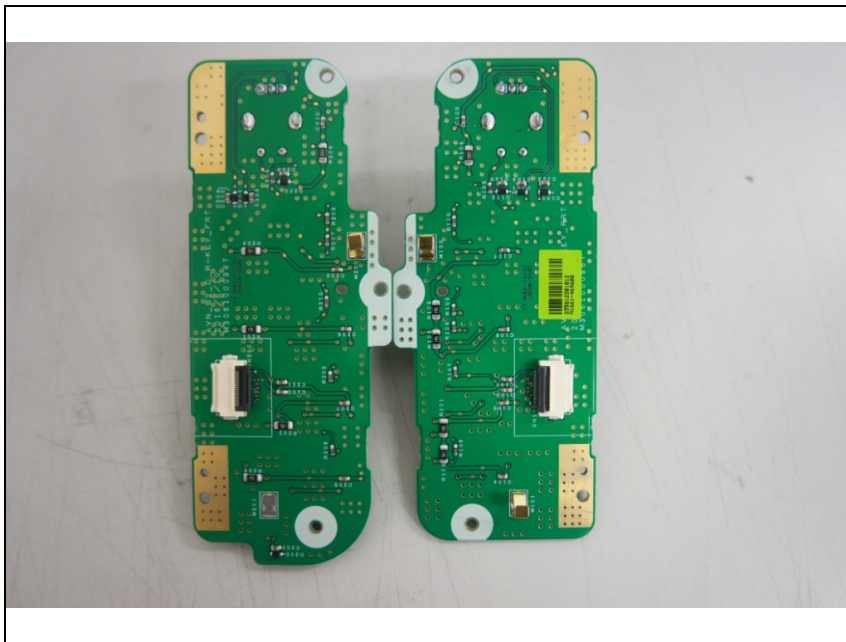
Bottom view of SUB PCB 1



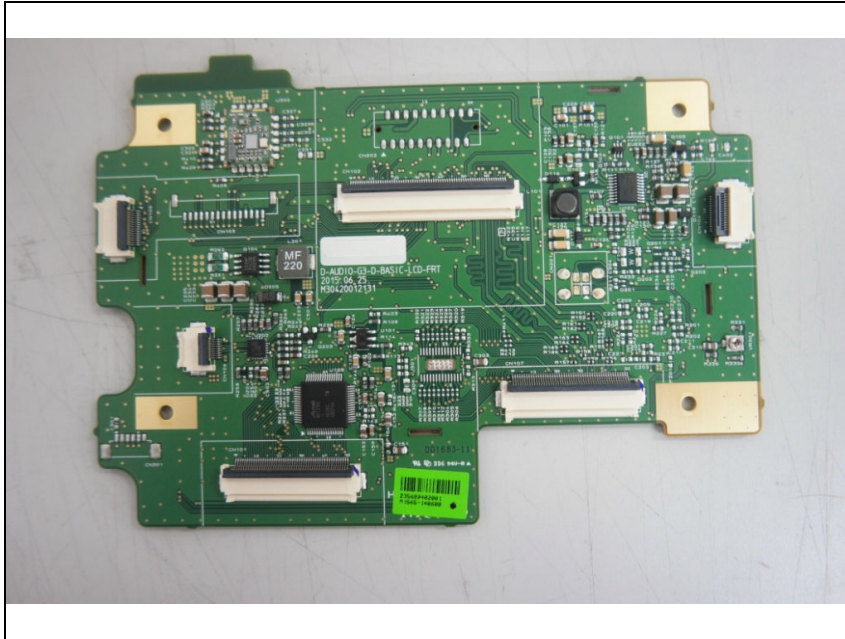
Top view of SUB PCB 2



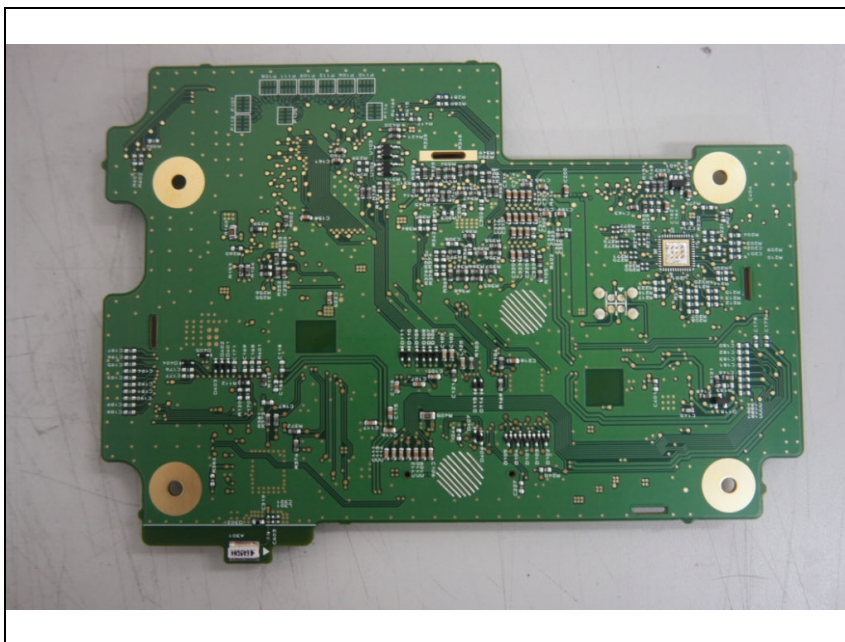
Bottom view of SUB PCB 2



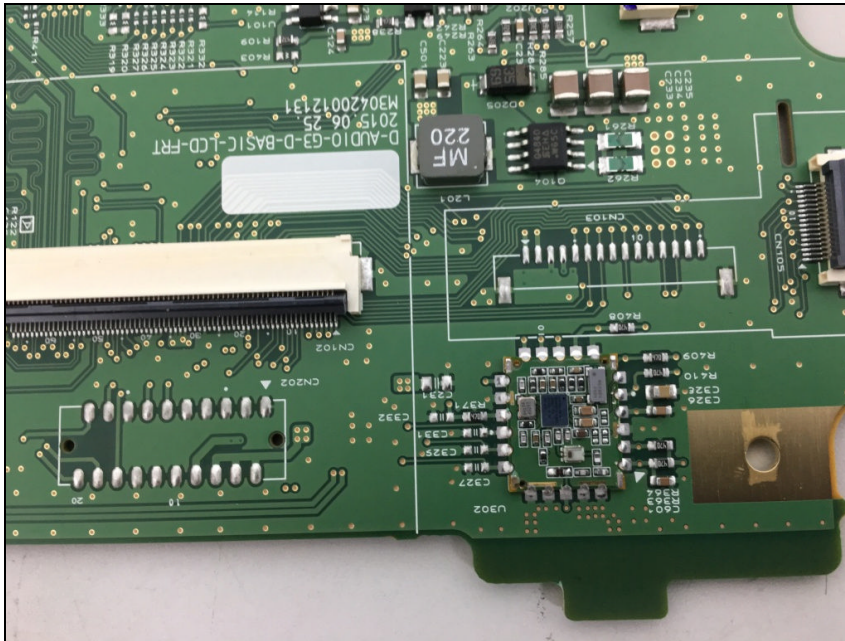
Top view of SUB PCB 3



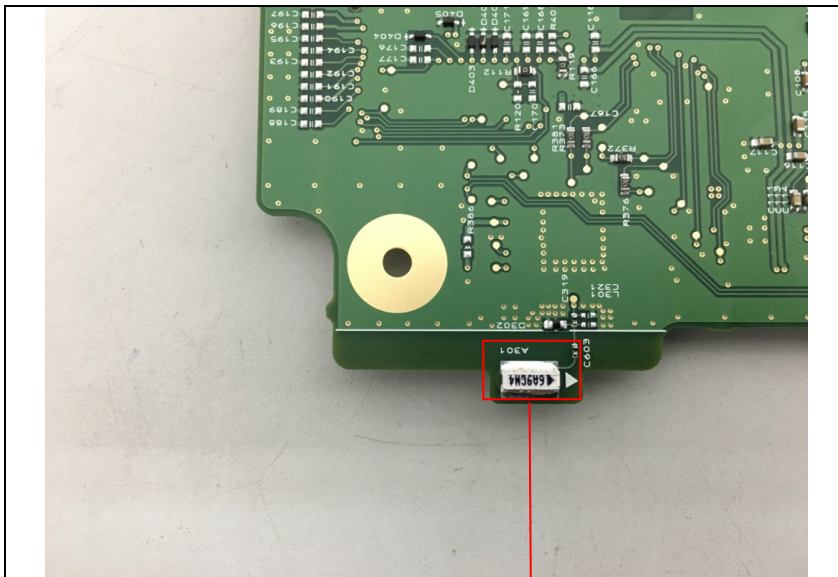
Bottom view of SUB PCB 3



Top view of Bluetooth module

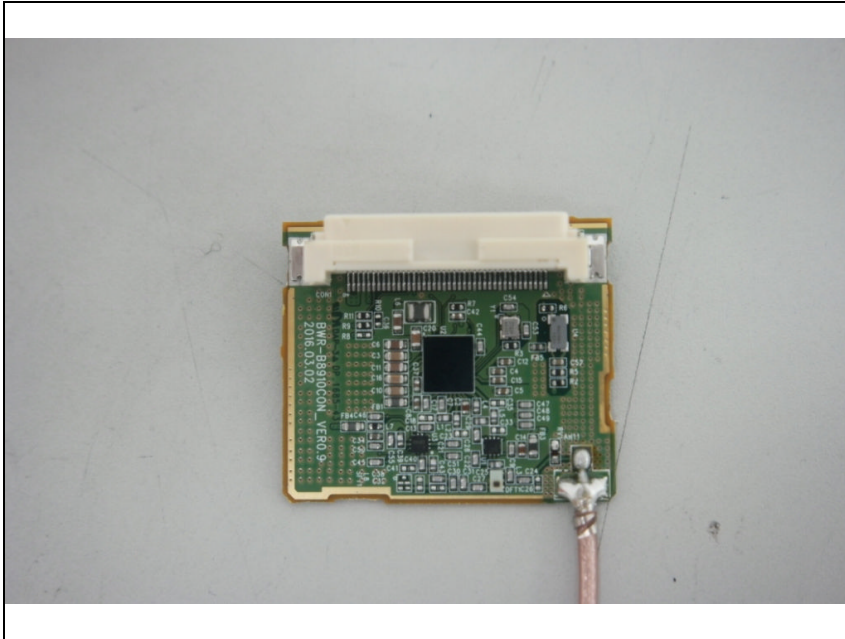


View of Bluetooth antenna

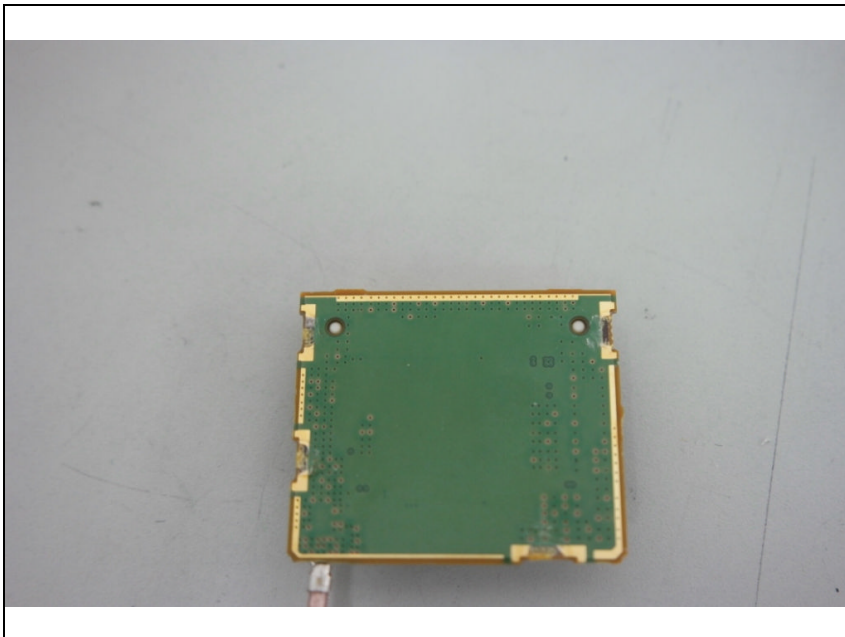


Chip Antenna

Top view of WLAN module



Bottom view of WLAN module



View of WLAN antenna

