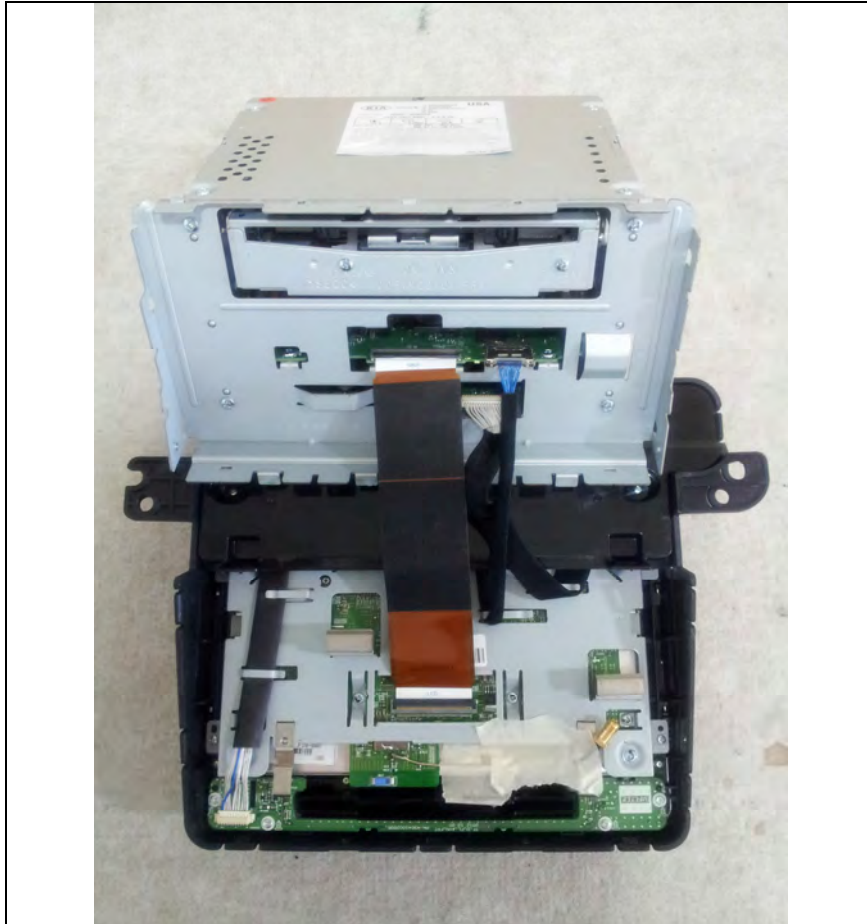


Internal photos of EUT

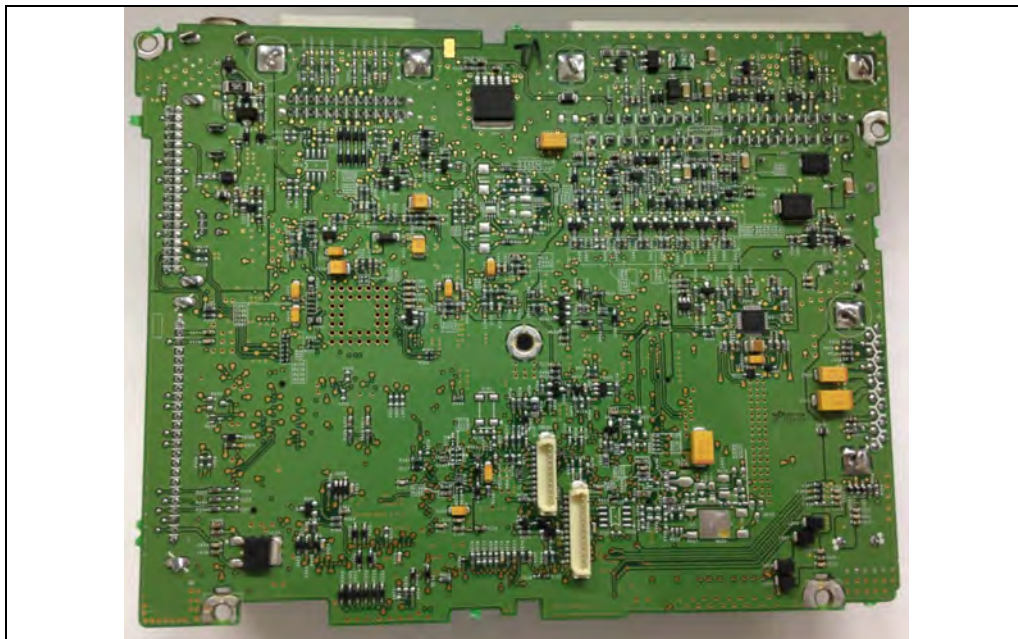
Internal view of EUT



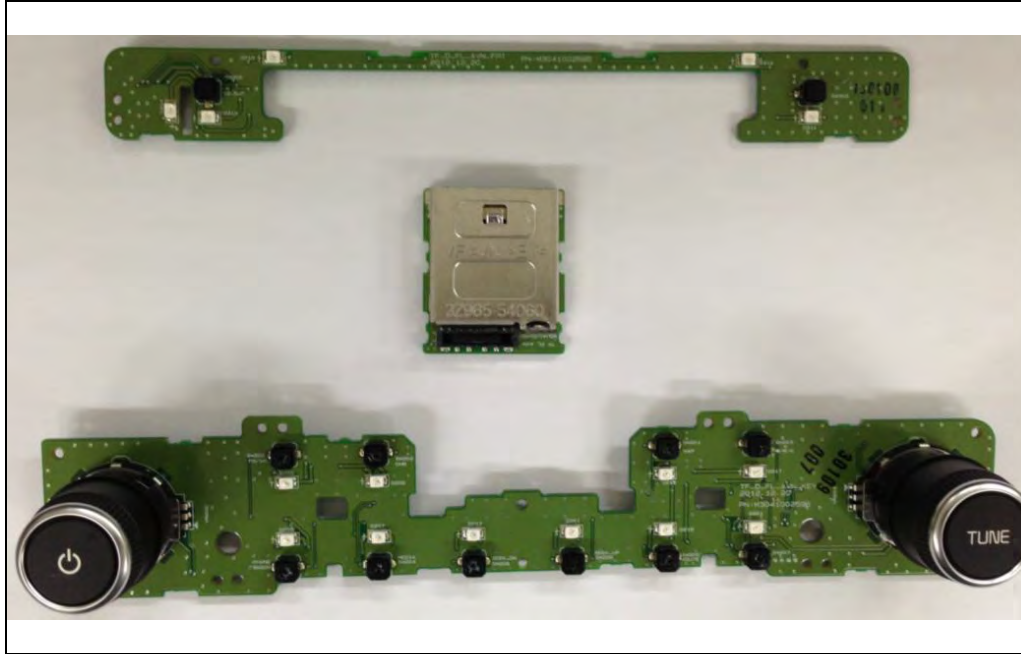
Top view of Main board



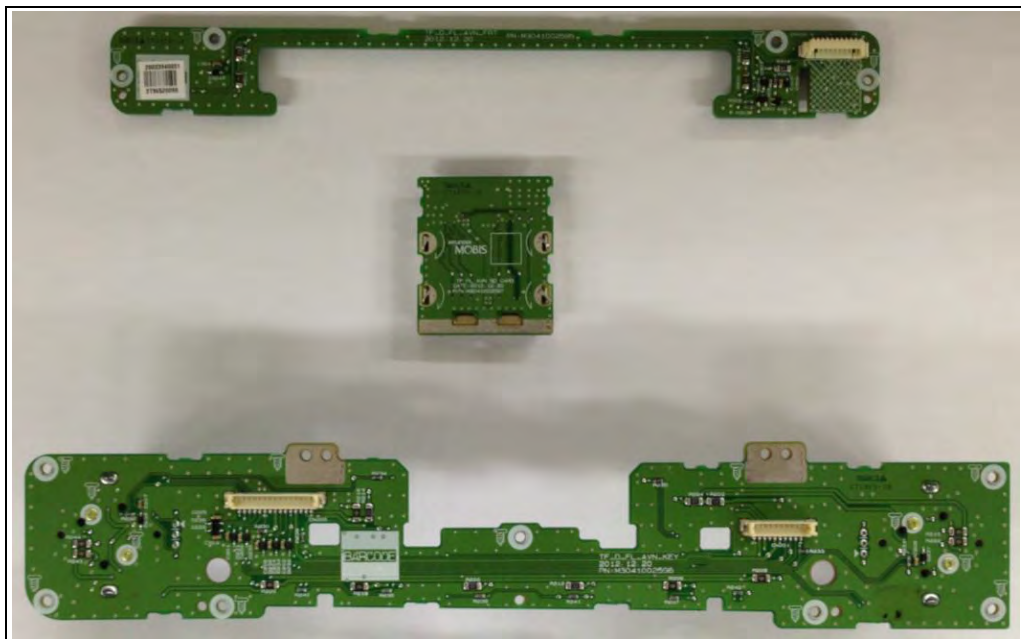
Bottom view of Main board



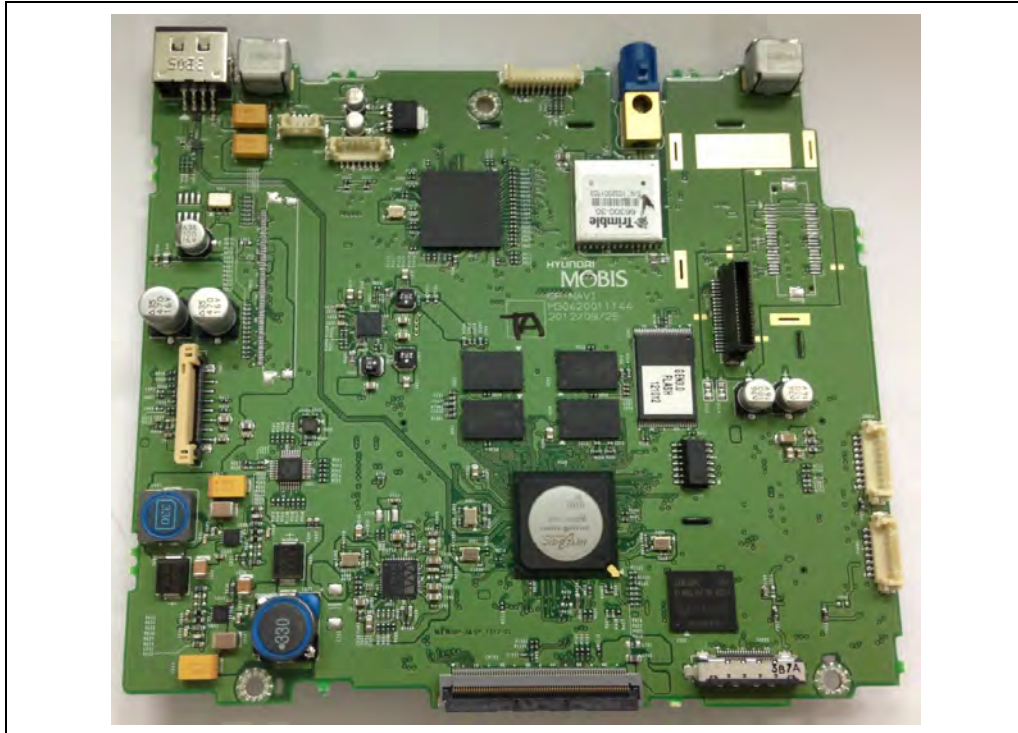
Top view of Key button boards



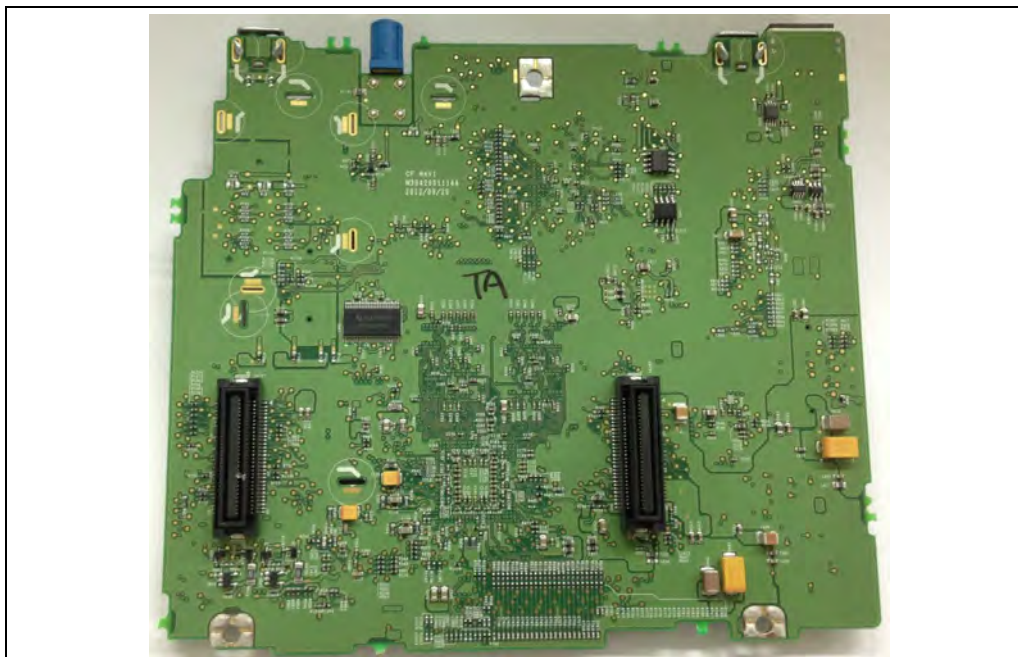
Bottom view of Key button boards



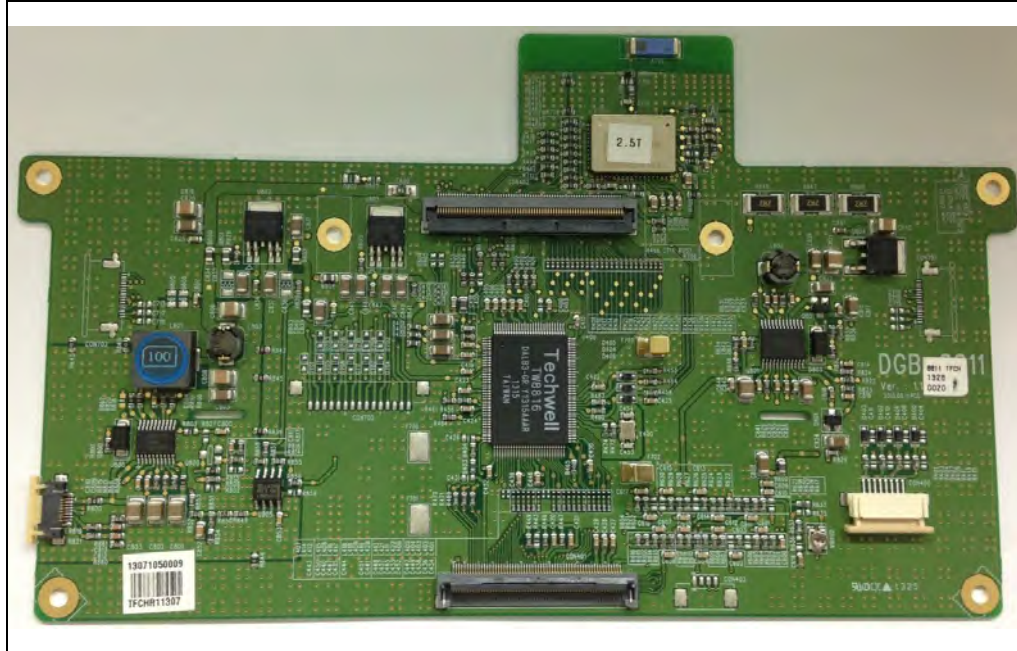
Top view of NAVI board



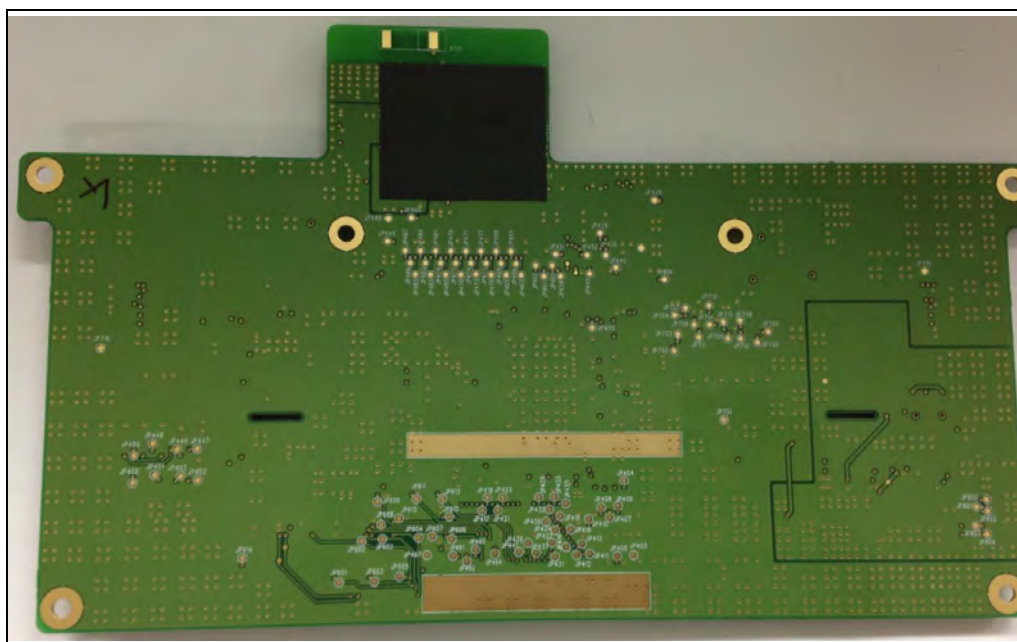
Bottom view of NAVI board



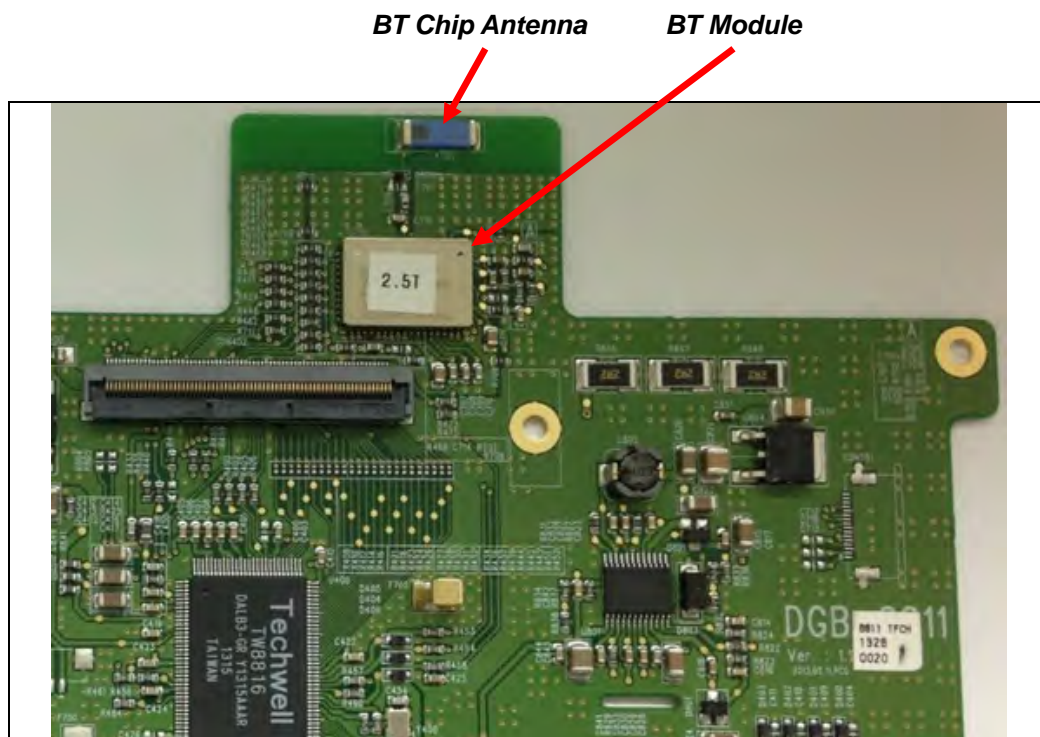
Top view of LCD board



Bottom view of LCD board



Top view of Bluetooth module



** BT Module and antenna are soldered on the PCB as above.*