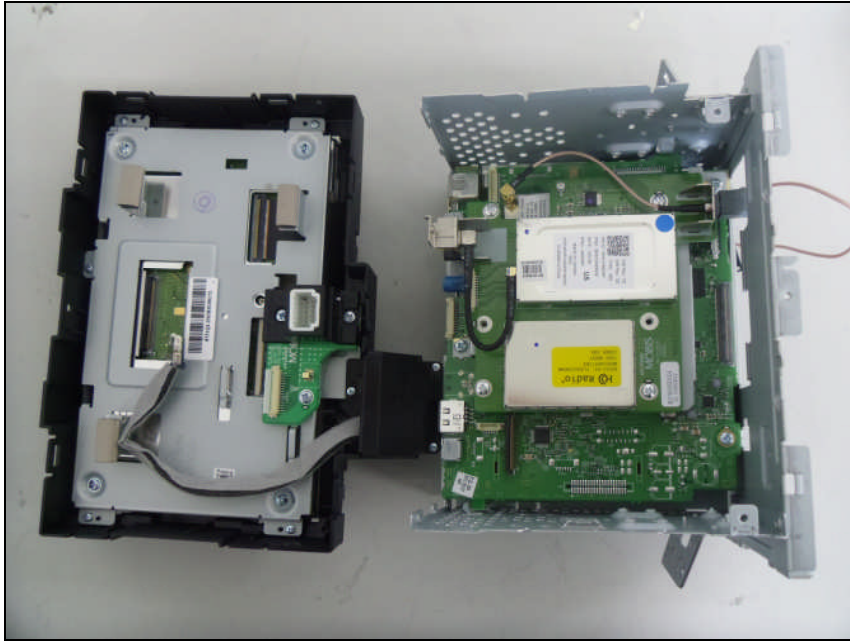
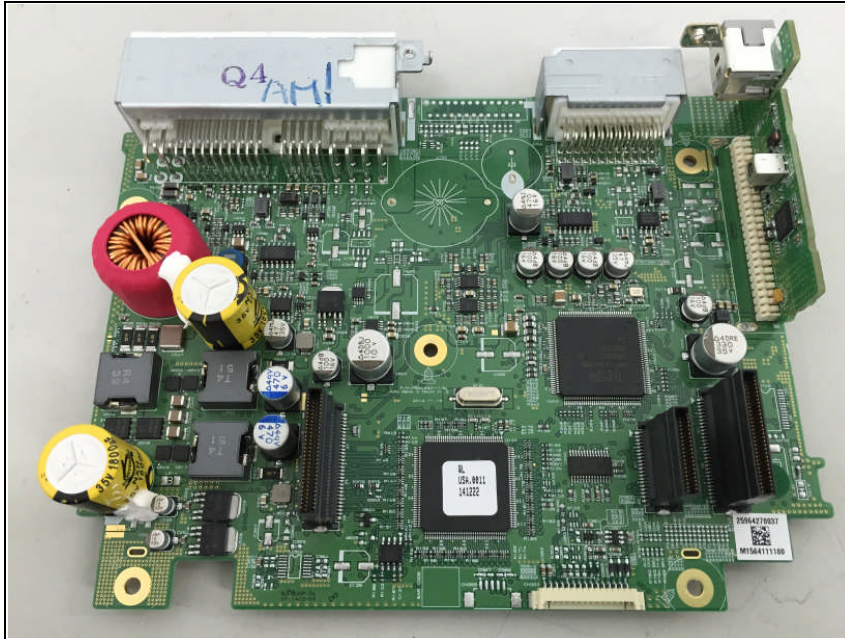


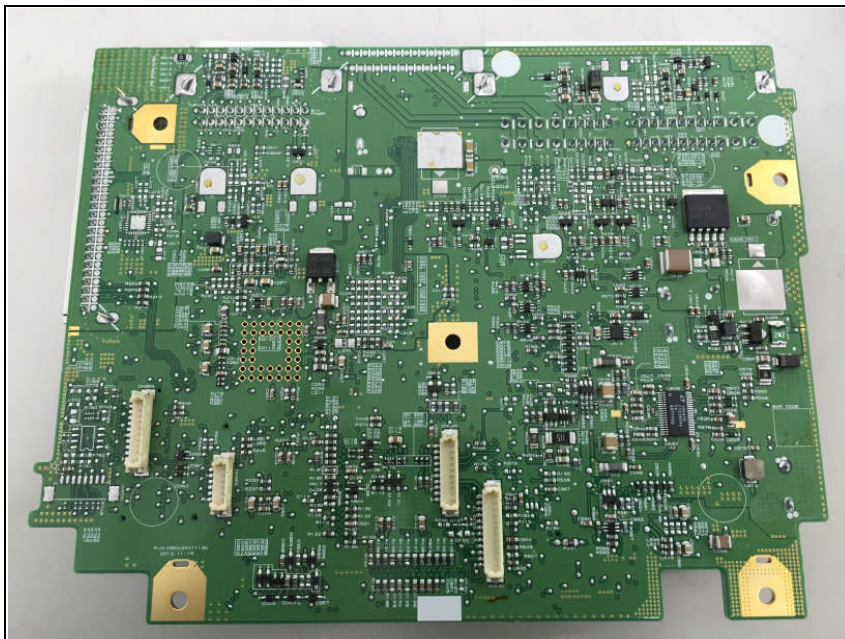
# **Internal photos of EUT**



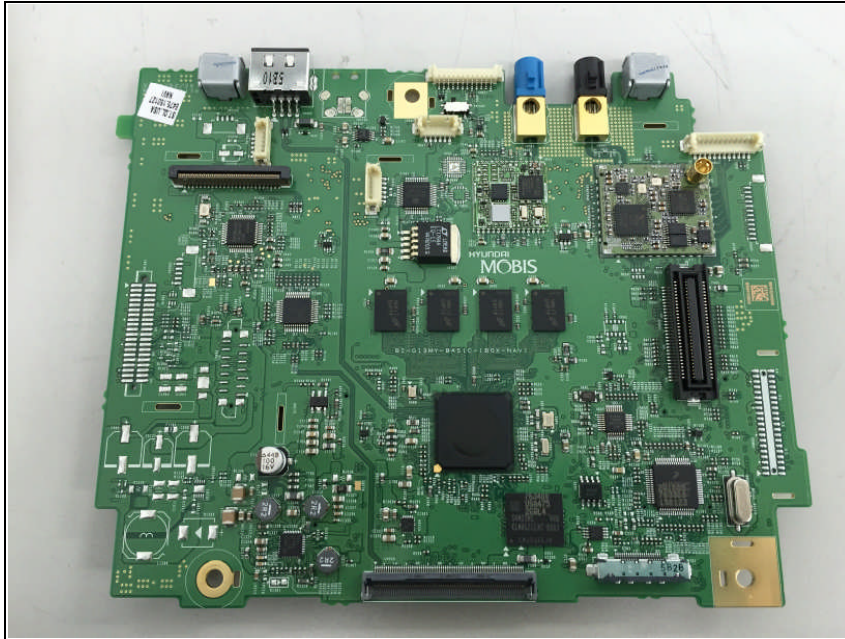
## *Top view of Main PCB*



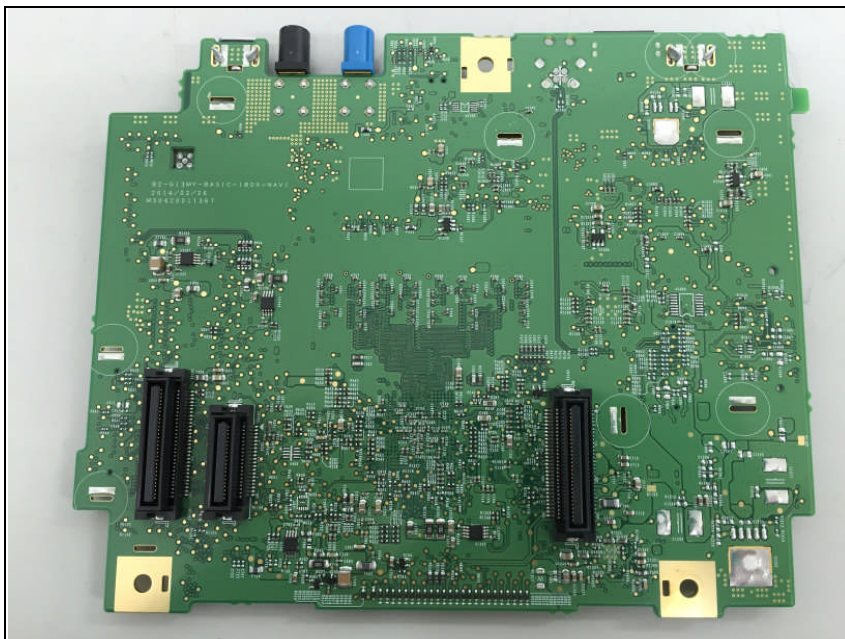
## *Bottom view of Main PCB*



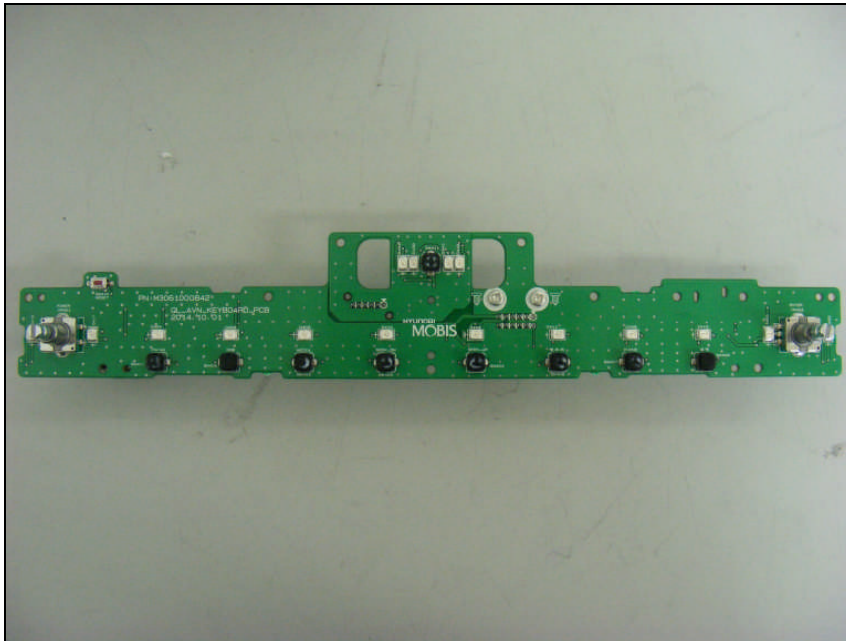
***Top view of sub 1 PCB***



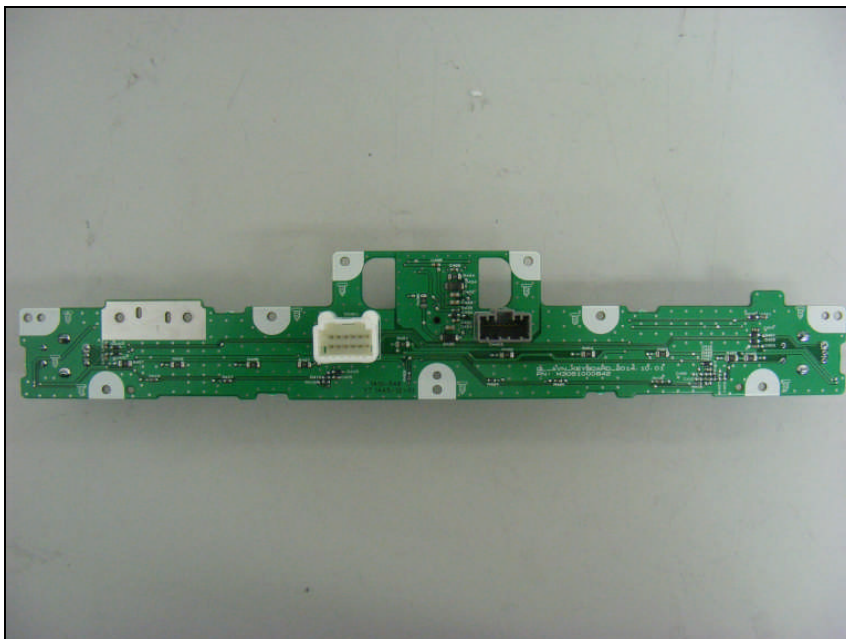
***Bottom view of sub 1 PCB***



## *Top view of Key PCB*

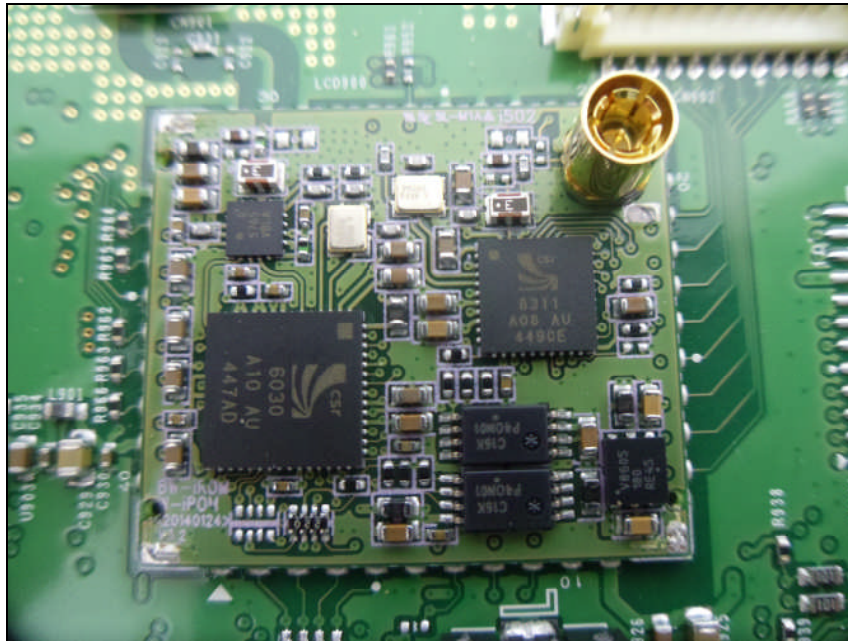


## *Bottom view of Key PCB*

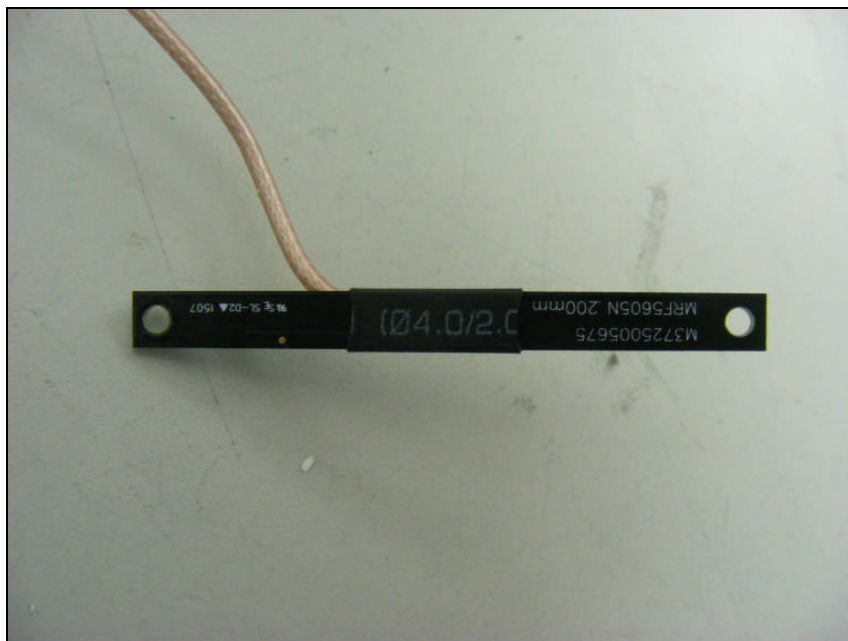


# SGS

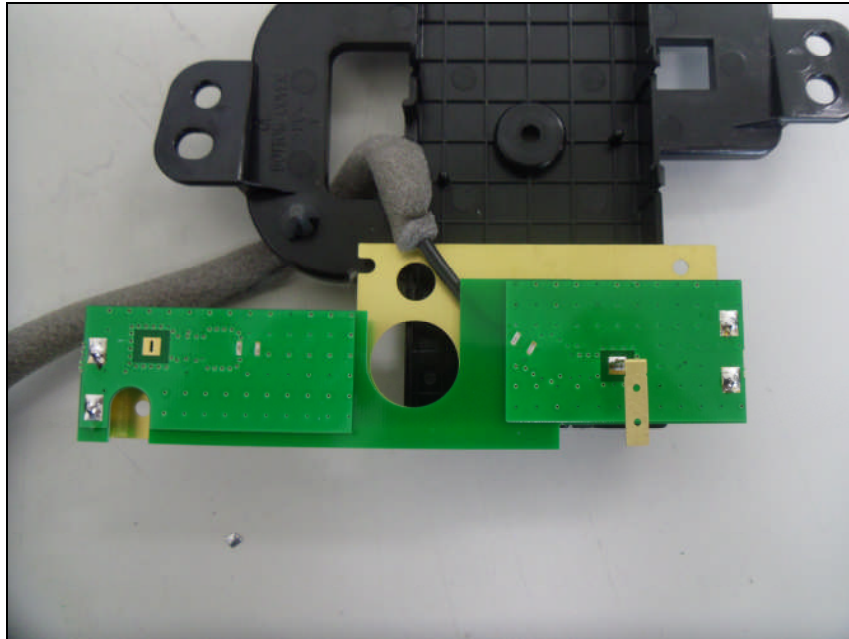
## *View of Module*



## *View of Antenna*



## *View of WLAN Antenna*



## *View of GPS Antenna*

