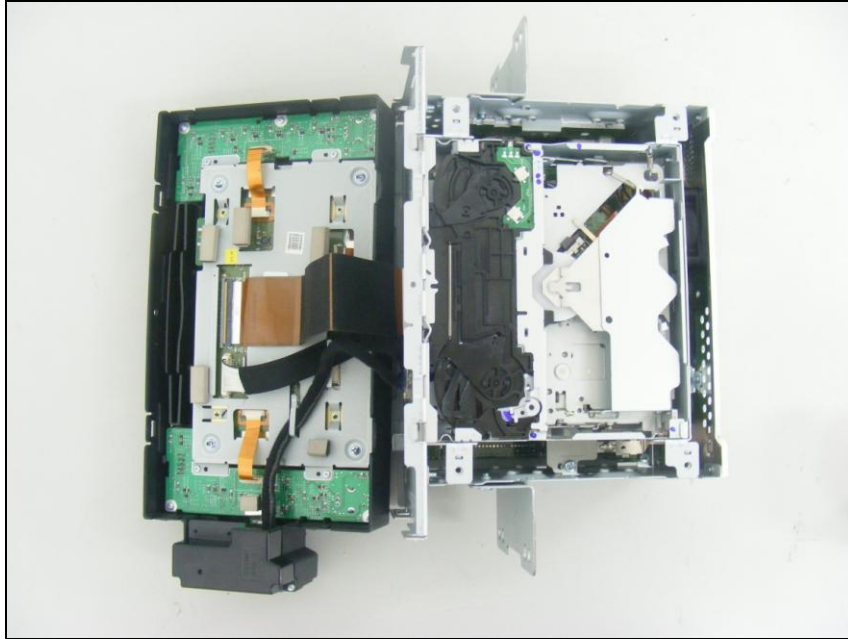
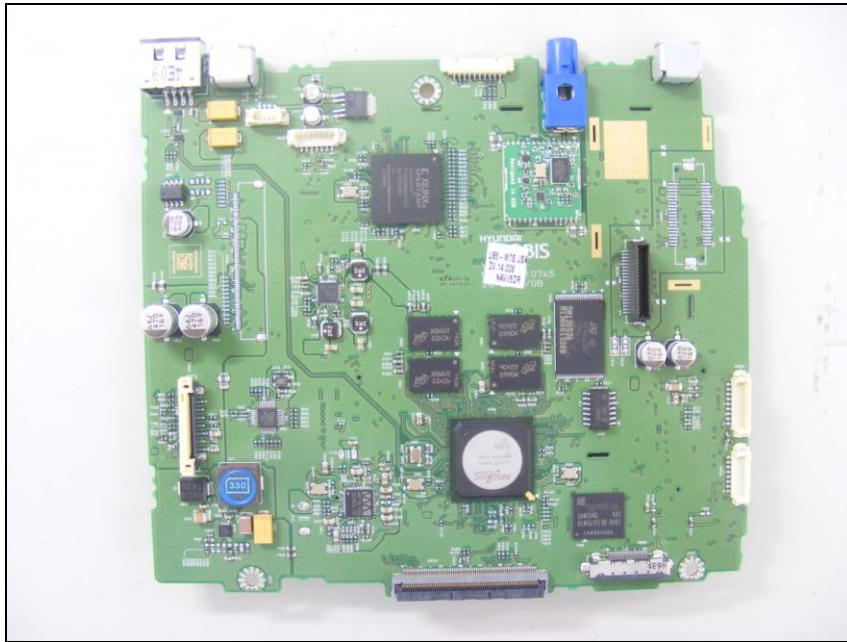


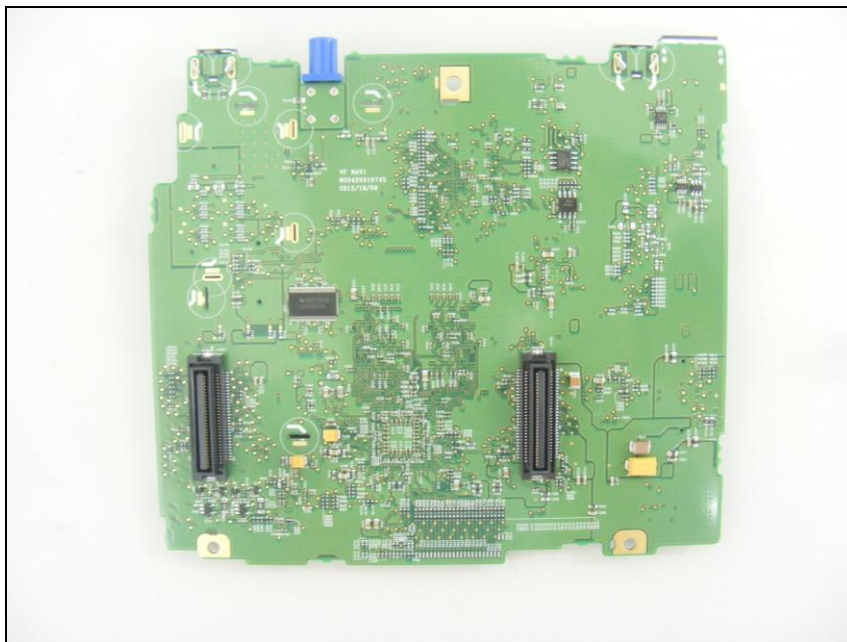
Internal photos of EUT



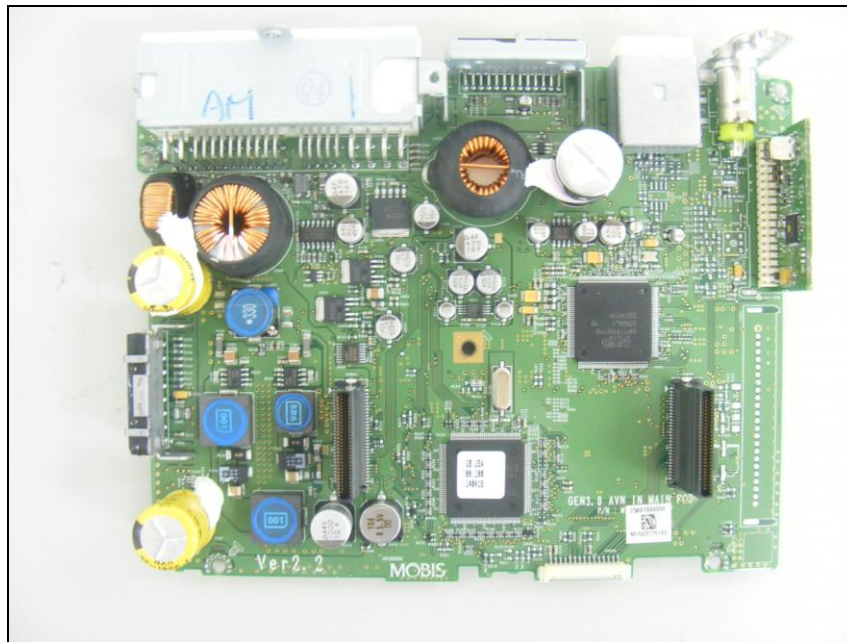
Top view of Main PCB1



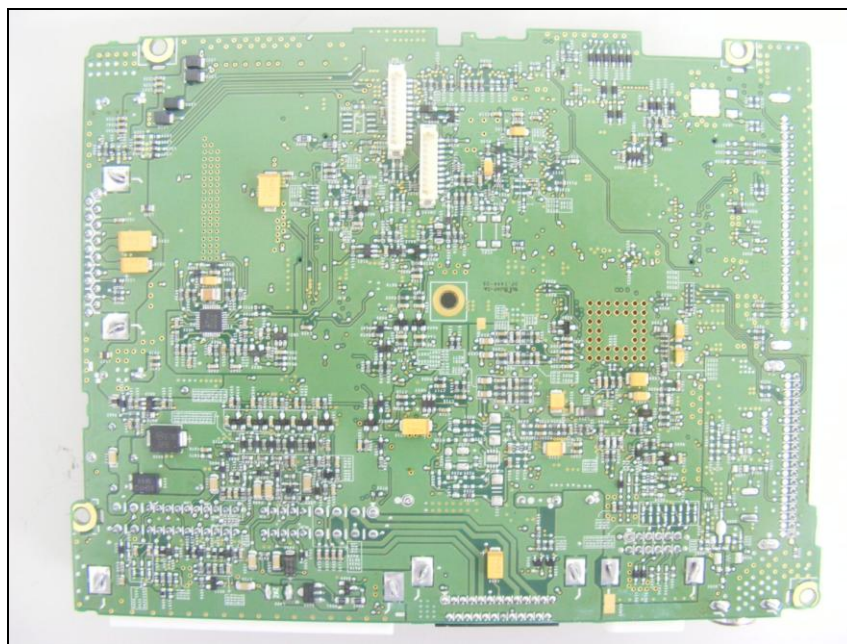
Bottom view of Main PCB1



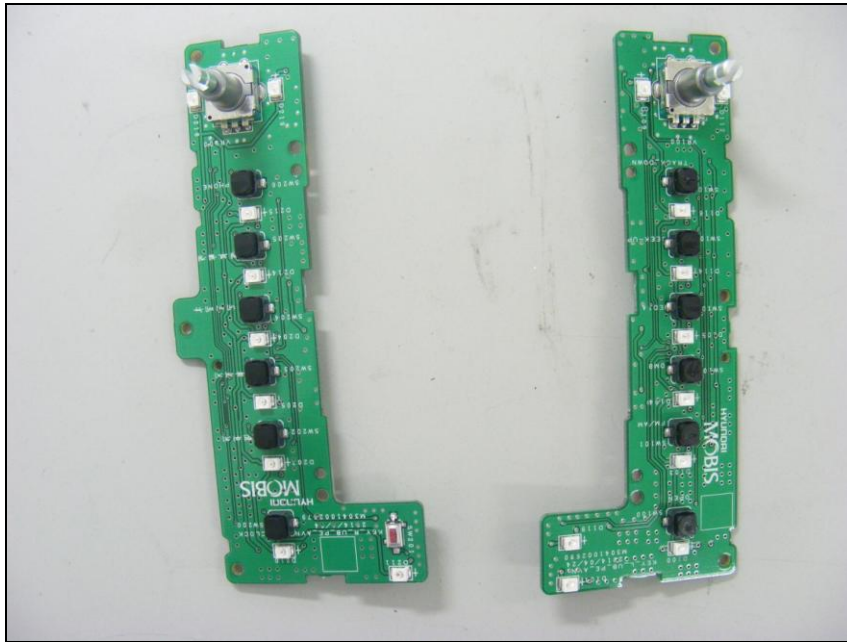
Top view of Main PCB2



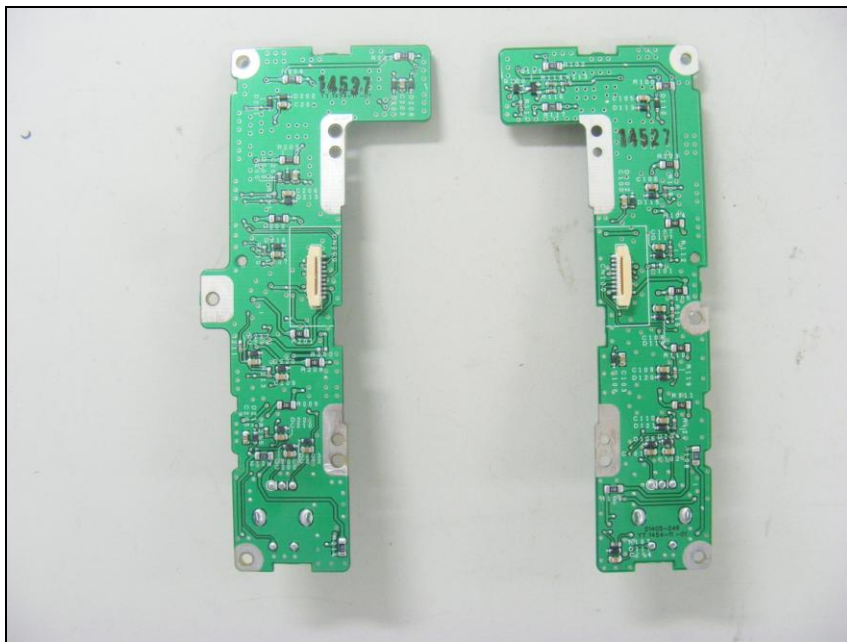
Bottom view of Main PCB2



Top view of Keypad PCB1



Top view of Keypad PCB1



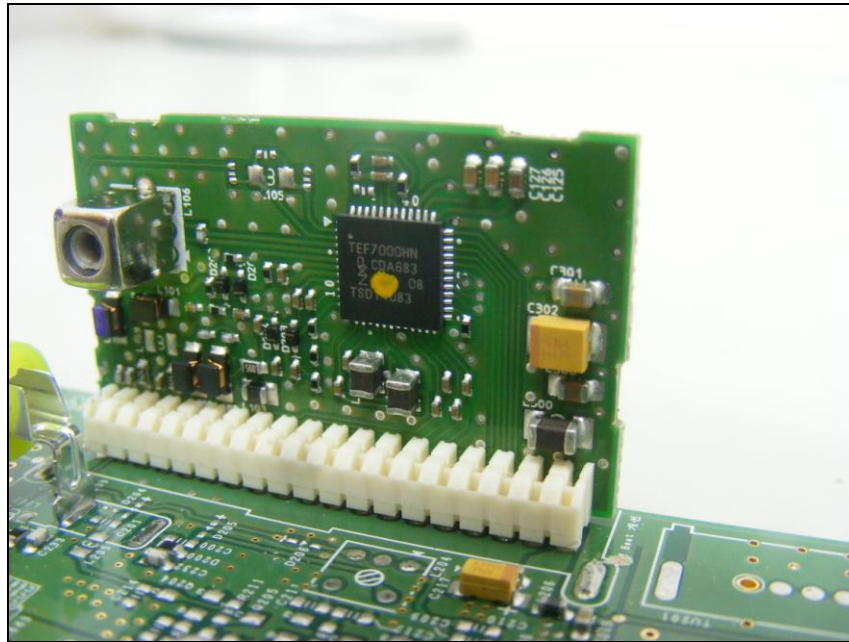
Top view of CD player PCB



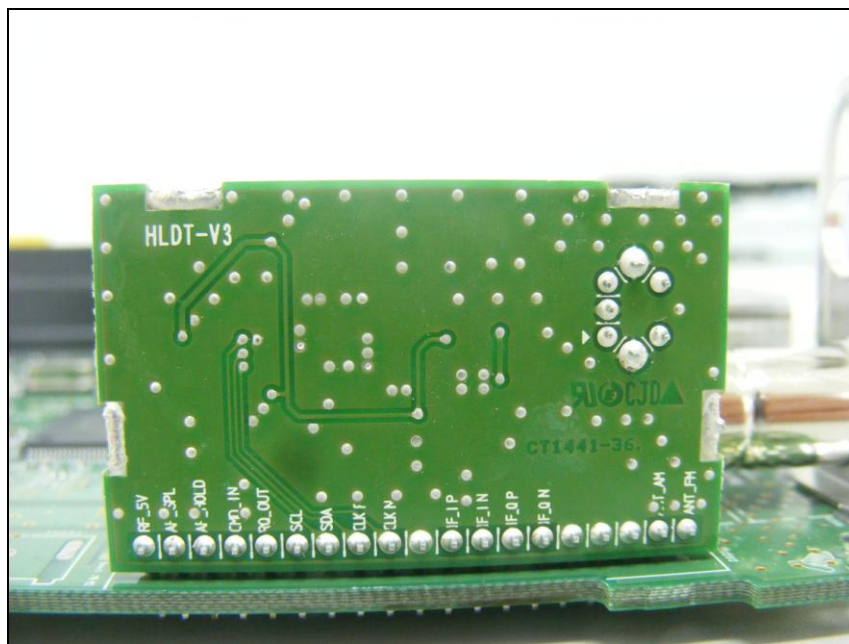
Bottom view of CD player PCB



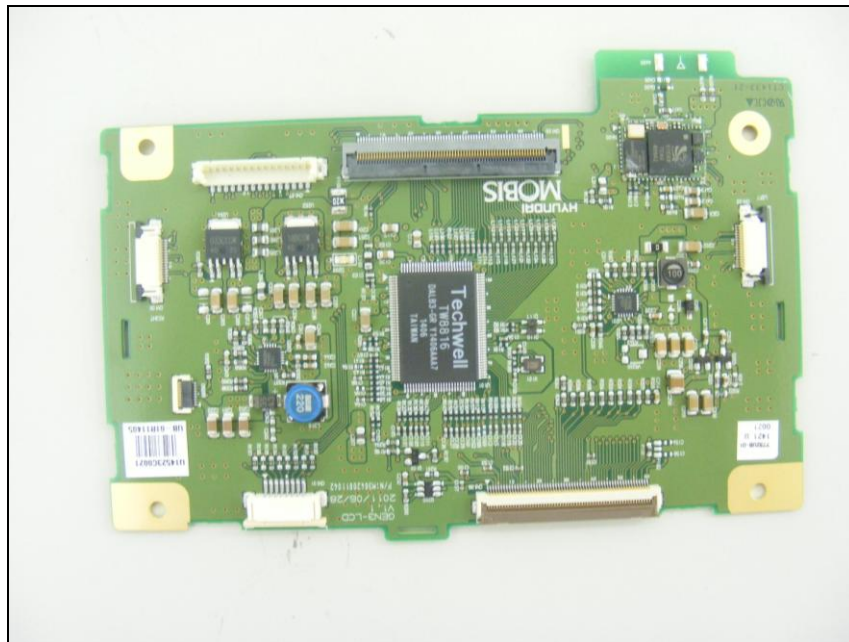
Top view of Sub PCB1



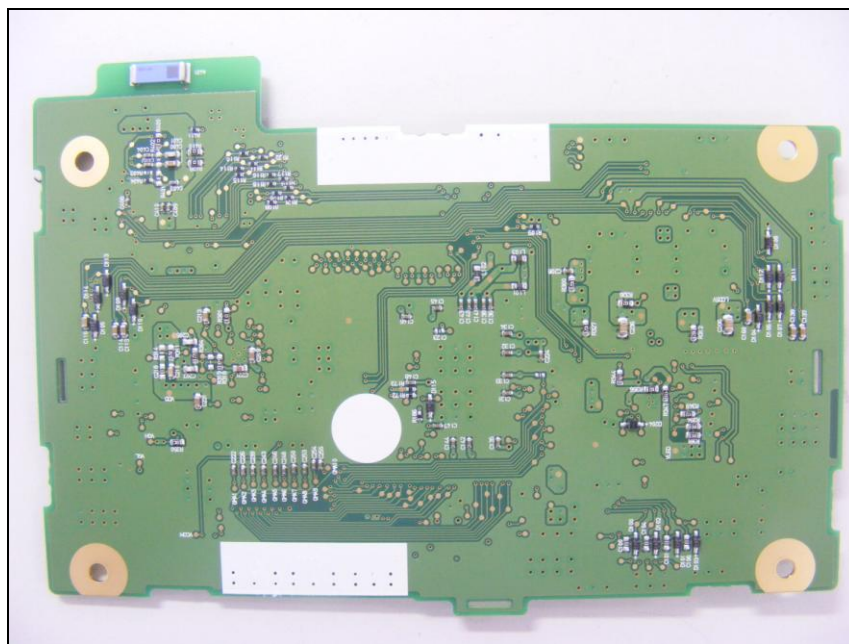
Bottom view of Sub PCB1

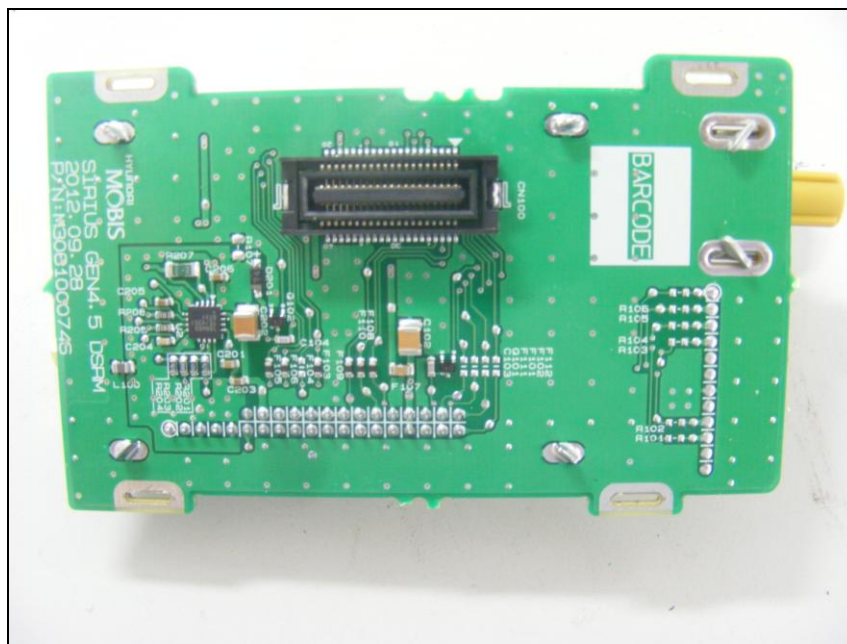
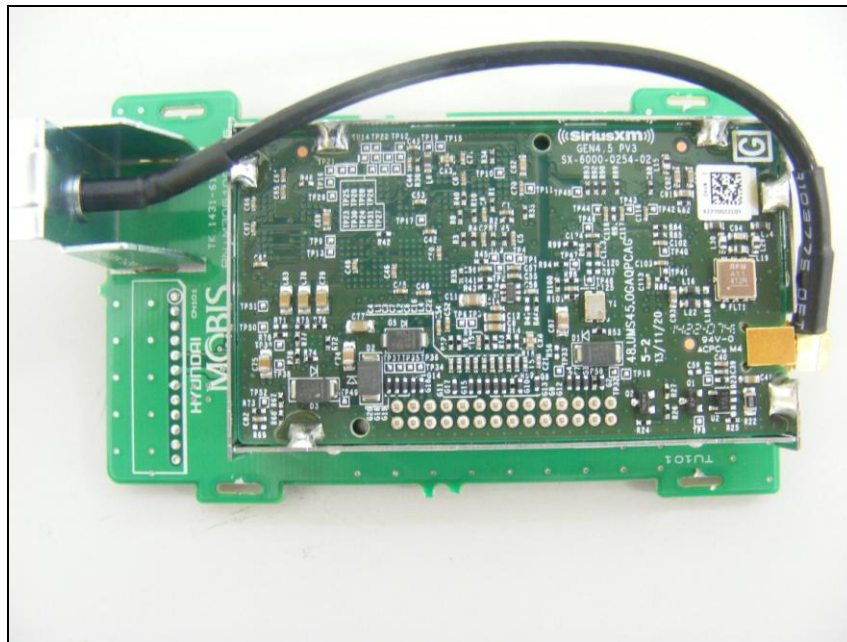


Top view of Sub PCB2



Bottom view of Sub PCB2

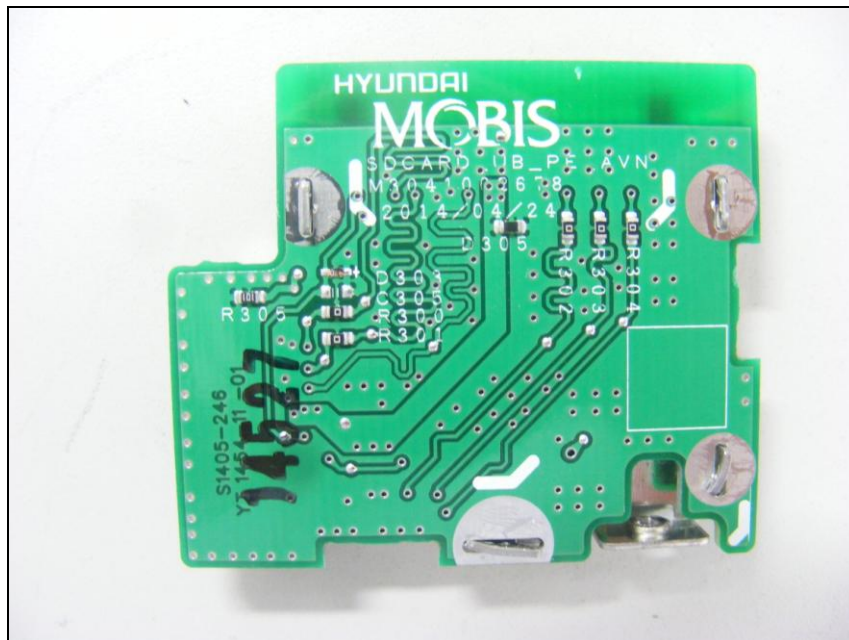




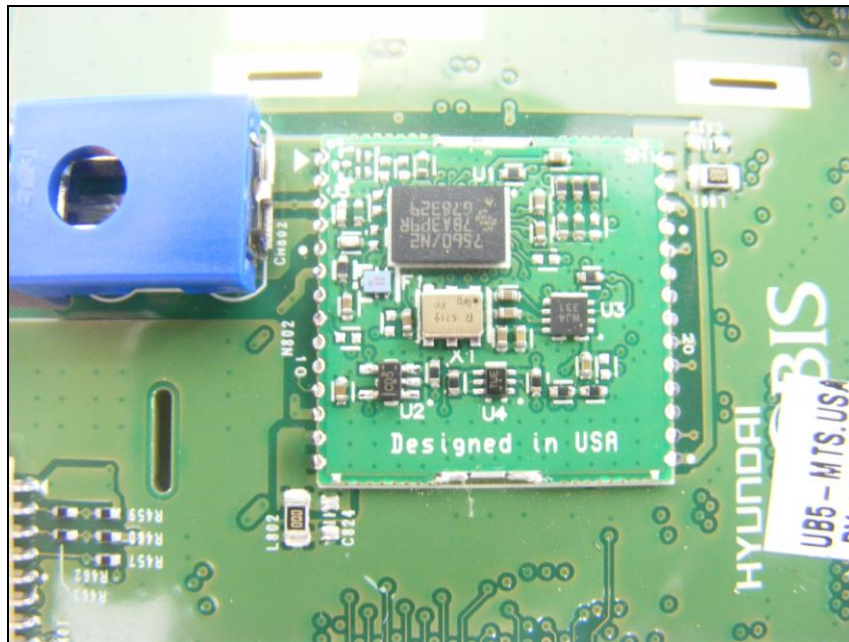
Top view of SD card PCB



Bottom view of SD card PCB



Top view of module PCB3



View of BT Antenna

